



**DAILY STATUS REPORT**

**Prepared By:**  
Thomas Jensen

WEATHER	Snow	Rain	Overcast	Partly Cloudy	X	Bright Sun	X	Wind
TEMP.	< 32	32-50	50-70	X	70-85	>85		SE – 6 mph

<b>IEEG Project No:</b>	13928	<b>NYSDEC BCP Site No:</b>	C224367	<b>Date:</b> 10/08/24
<b>Project:</b>	251 Douglass Street, Brooklyn, NY			

<p><b>Consultant:</b> Impact Environmental Engineering and Geology, PLLC (IEEG)</p> <p>Time On: 06:50 Time Out: 16:30</p>	<p><b>Personnel On Site:</b> IEEG (Environmental) – Thomas Jensen Broadway Construction Group – Shannon Dowling / Tom Caporale WSP – Charlie Lambert Cascade – John Vollmer Concrete Courses</p> <p><b>Equipment On Site:</b> (3) MiniRAE 3000 PID, (3) DustTrak II</p>
---	---

**Scope of Work:** IEEG to deploy CAMP stations according to wind direction; load out of material from swell stockpile; Cascade to continue ISS column installation; and Concrete Courses to continue with super structure work.

- Site Activities:**
- IEEG deployed three (3) CAMP stations prior to the start of work activities;
  - ACT delivered one (1) load of slag to the silo;
  - IEEG applied ATMOS foam to stockpile, swell material, and site surface as needed throughout Site work;
  - Concrete Courses continued work on the superstructure in the Butler Corridor;
  - Concrete Courses continued rebar work in the phase 2 construction area on the rat slab;
  - Concrete Courses received one delivery of rebar;
  - IEEG Received eight (8) drums of ATMOS foam;
  - Cascade drilled **Column 199** with column specification below:
    - Column is 8’ diameter and drilled 36’ deep from Site grade;
    - The column consisted of a total of 18 batches;
    - At 16:55, while drilling upstroke 2 the auger head had to be greased. The auger remained spinning at the bottom of the column. Upstroke 2 resumed at 17:08;
  - Cascade drilled **Column 201** with column specification below:
    - Column is 8’ diameter and drilled 36’ deep from Site grade;
    - The column consisted of a total of 14 batches;
  - Cascade drilled **Column 203** with column specification below:
    - Column is 8’ diameter and drilled 36’ deep from Site grade;
    - The column consisted of a total of 15 batches;
    - A wet mix sample was collected from 18.5’;
  - Cascade drilled **Column 205** with column specification below:
    - Column is 8’ diameter and drilled 36’ deep from Site grade;
    - The column consisted of a total of 17 batches;

**Community Air Monitoring Program (CAMP) - CAMP** action level for dust (0.1 mg/m<sup>3</sup>) and VOCs (5 ppm)

- PID remained at nominal levels throughout the day
- No sustained dust exceedances were observed over a 15-min period during monitoring.
- Startup Upwind Conditions – PID = \_0.0\_ ppm, Dust = \_0.411\_ mg/m<sup>3</sup> @ 06:51
- High Conditions (Upwind) – PID = \_3.6\_ ppm @ 08:41, Dust = \_0.601\_ mg/m<sup>3</sup> @ 08:41
- High Conditions (Downwind 1) – PID = \_1.4\_ ppm @ 08:08, Dust = \_1.31\_ mg/m<sup>3</sup> @ 08:20
- High Conditions (Downwind 2) – PID = \_0.0\_ ppm, Dust = \_0.464\_ mg/m<sup>3</sup> @ 06:48

**Notable Site Conditions:**

- None.

**Planned for the Next Day/Week:**

- Cascade to continue ISS column installation; and
- Concrete Courses to continue super structure activities.



**PHOTO LOG**

251 DOUGLASS STREET, BROOKLYN, NY



**Photo 1-**  
Representative  
photo of drilling  
an ISS column.



**Photo 2-**  
Representative  
photo of work  
area sprayed  
at the end of the  
day.



**Photo 3-**

Representative photo of swell stockpile securely covered with poly at the end of the day.



**Photo 4-**

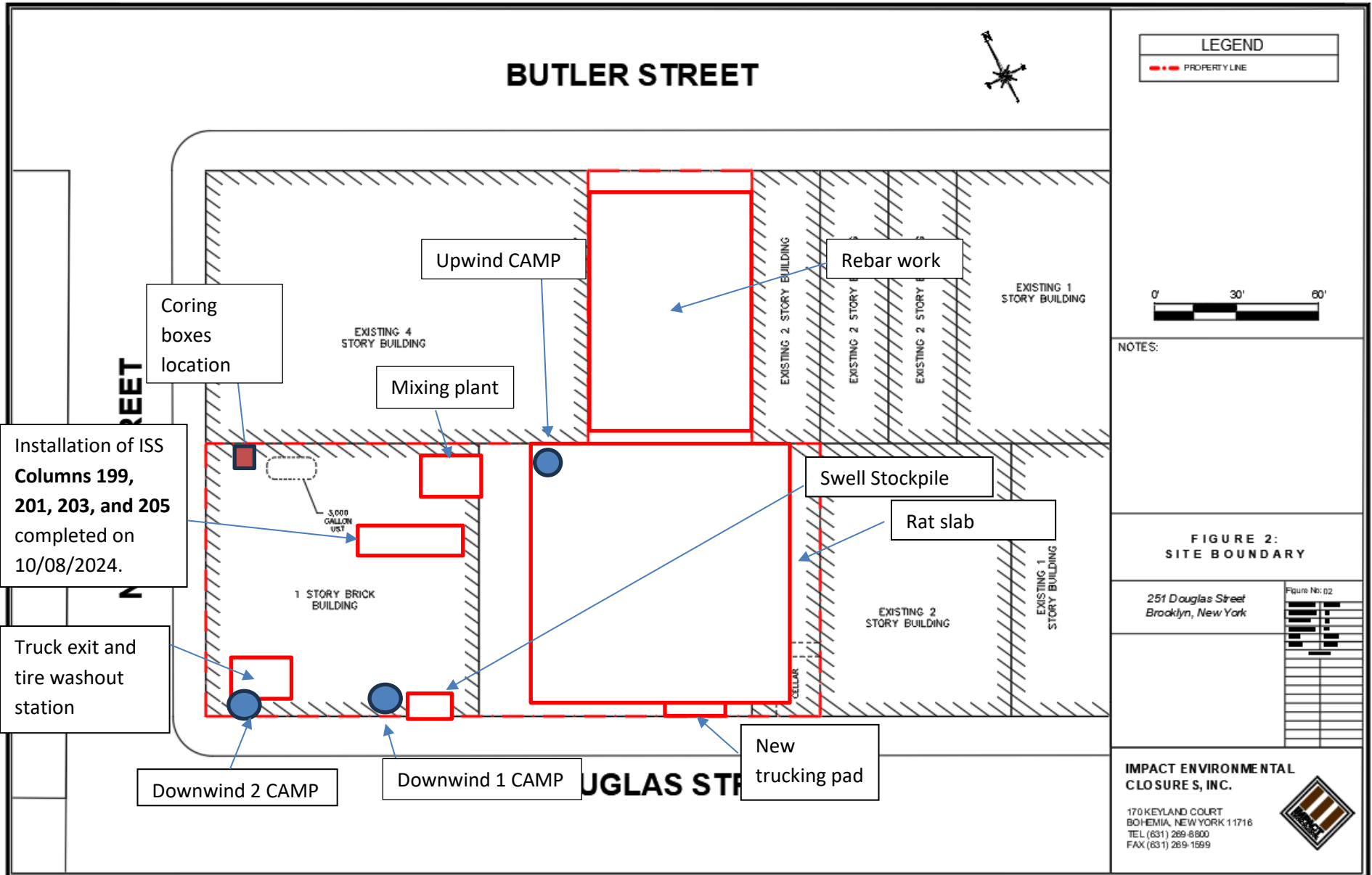
Representative photo of wet mix sample being collected at Column 203 at 18.5'.

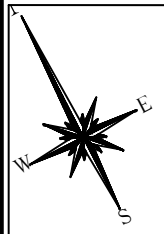


**SITE PLANS**

251 DOUGLASS STREET, BROOKLYN, NY







### LEGEND


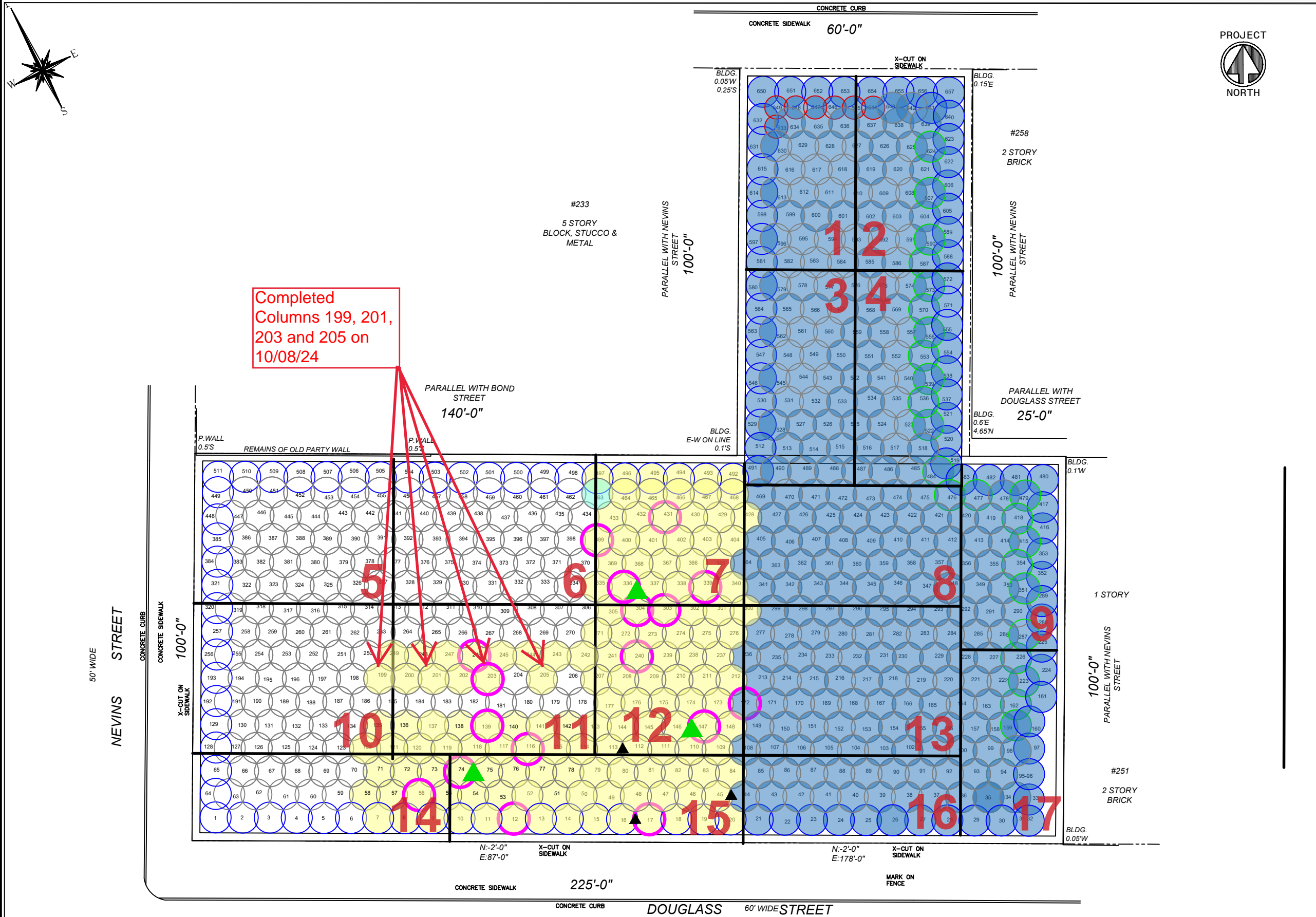
- PROPERTY LINE
- 55' EIGHT FOOT DIA. HYDRAULIC COLUMN (TYP.)
- EIGHT FOOT DIA. INNER COLUMN (TYP.)
- APPROVED TO 55'
- SIX FOOT DIA. HYDRAULIC COLUMN (TYP.)
- ISS COLUMN INSTALLED TO TERMINAL DEPTH
- ISS COLUMN UNABLE TO BE INSTALLED TO TERMINAL DEPTH
- ISS COLUMN / GRID APPROVED BY DEC
- WET MIX SAMPLE COLLECTED FROM ISS COLUMN
- COMPLETED CORING LOCATION
- PROPOSED CORING LOCATION

NOTES:  
 1. THE BASE MAP WAS DRAWN FROM A PLAN ENTITLED, ALTA/NSPS LAND TITLE SURVEY, PREPARED BY PERFECT POINT LAND SURVEYING OF BROOKLYN, NY AND WAS RECEIVED ELECTRONICALLY ON APRIL 2023 WITH AN ORIGINAL SCALE: 1" = 20'.

<b>251 Douglass Street Brooklyn, New York</b>		PROJECT NO:	13028-01
		DESIGNED BY:	AB
		DRAWN BY:	AB
		CHECKED BY:	DP
		DATE:	10/4/2024
		SCALE:	N.T.S.
		REVISIONS	

**IMPACT ENVIRONMENTAL ENGINEERING & GEOLOGY PLLC.**

170 KEYLAND COURT  
 BOHEMIA, NEW YORK 11716  
 TEL (631) 269-8800  
 FAX (631) 269-1599

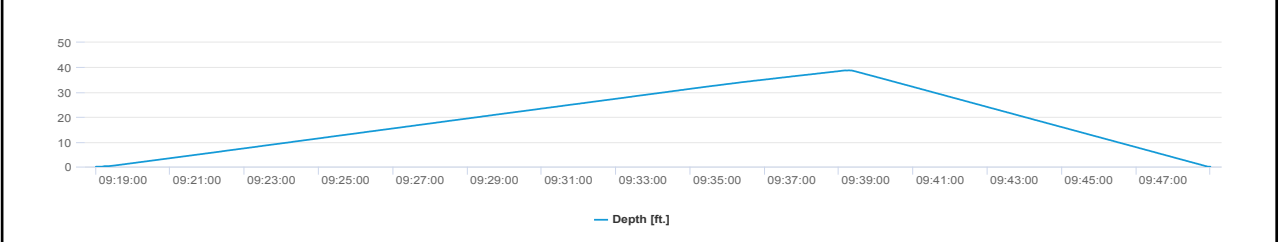
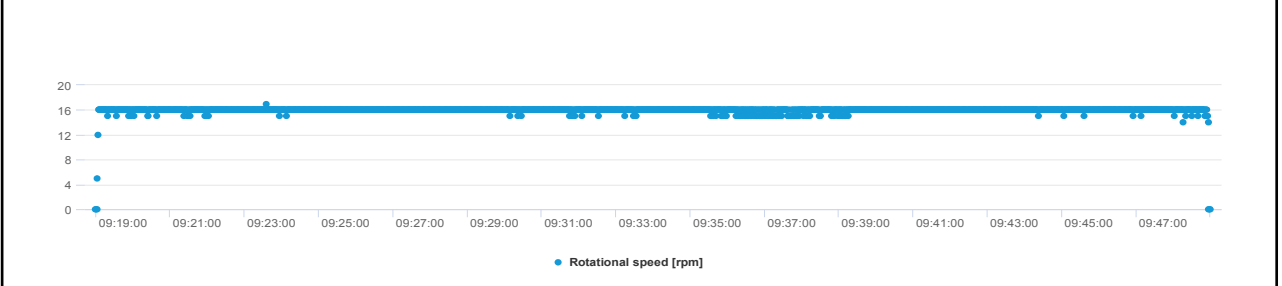
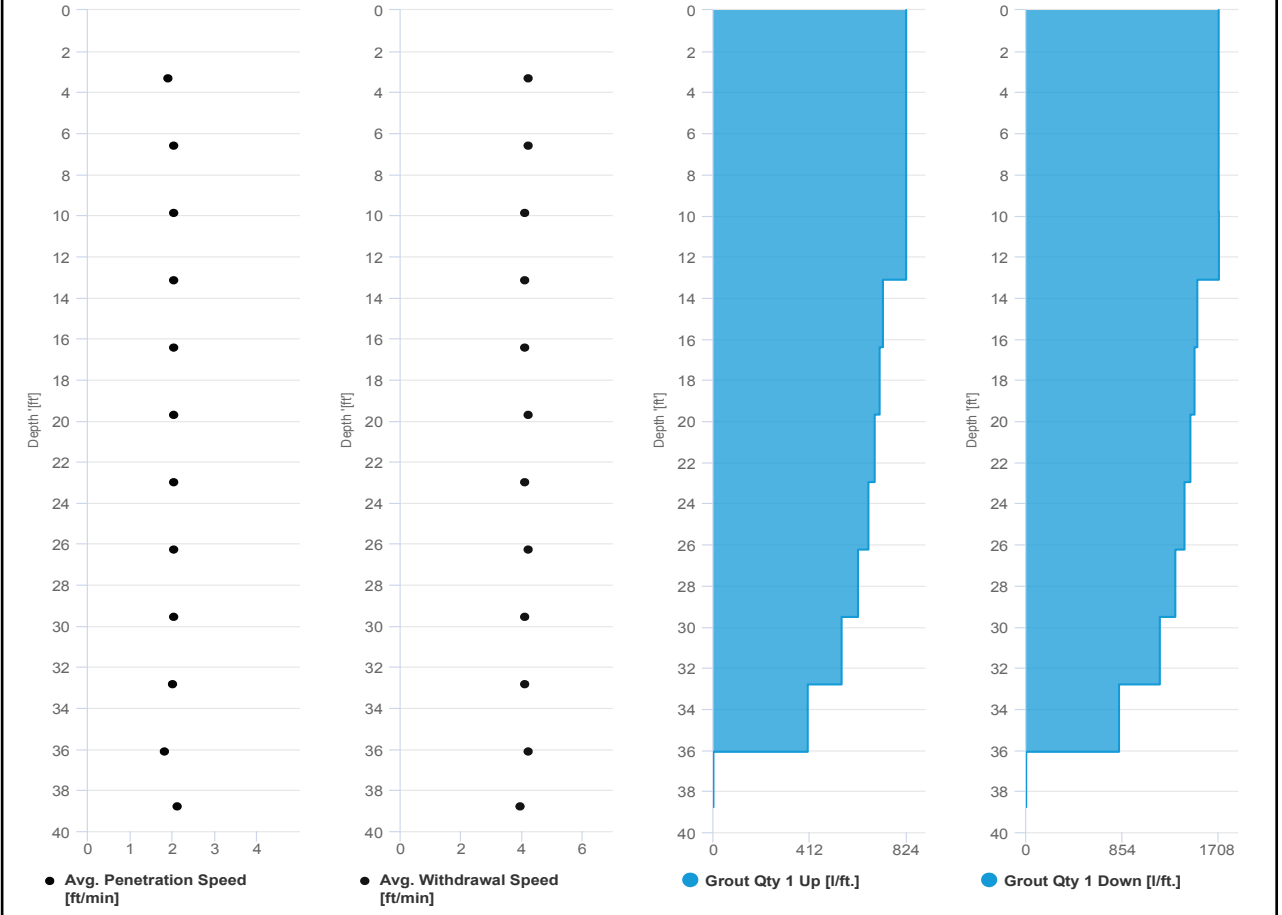


# SCM Report



Project name	Douglass Street BCG ISS	Element name	205b
		Project number	
		Start date	10/08/2024
Drilling rig	BG36H_5717		

<b>Details</b>			
Max. depth	38.78 ft.	Start time	09:19 AM
Volume/m 1	21.189 ft³	End Date	10/08/2024
		End time	09:49 AM
		Production duration	00:30:01
		Final depth time	09:39 AM
		Total suspension quantity	249.534 ft³



# SCM Report

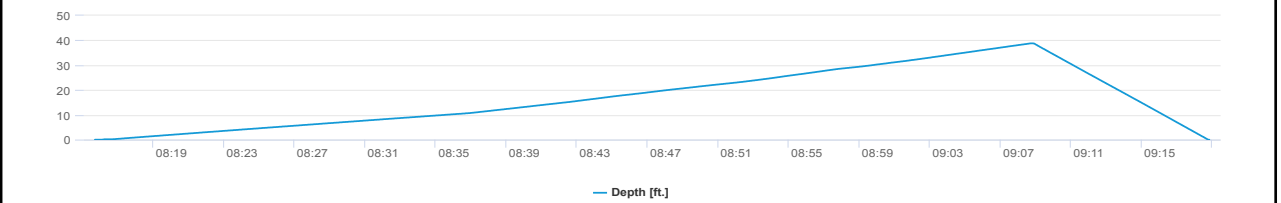
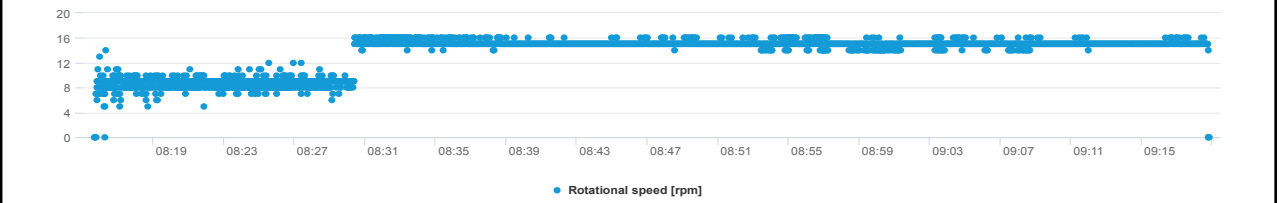
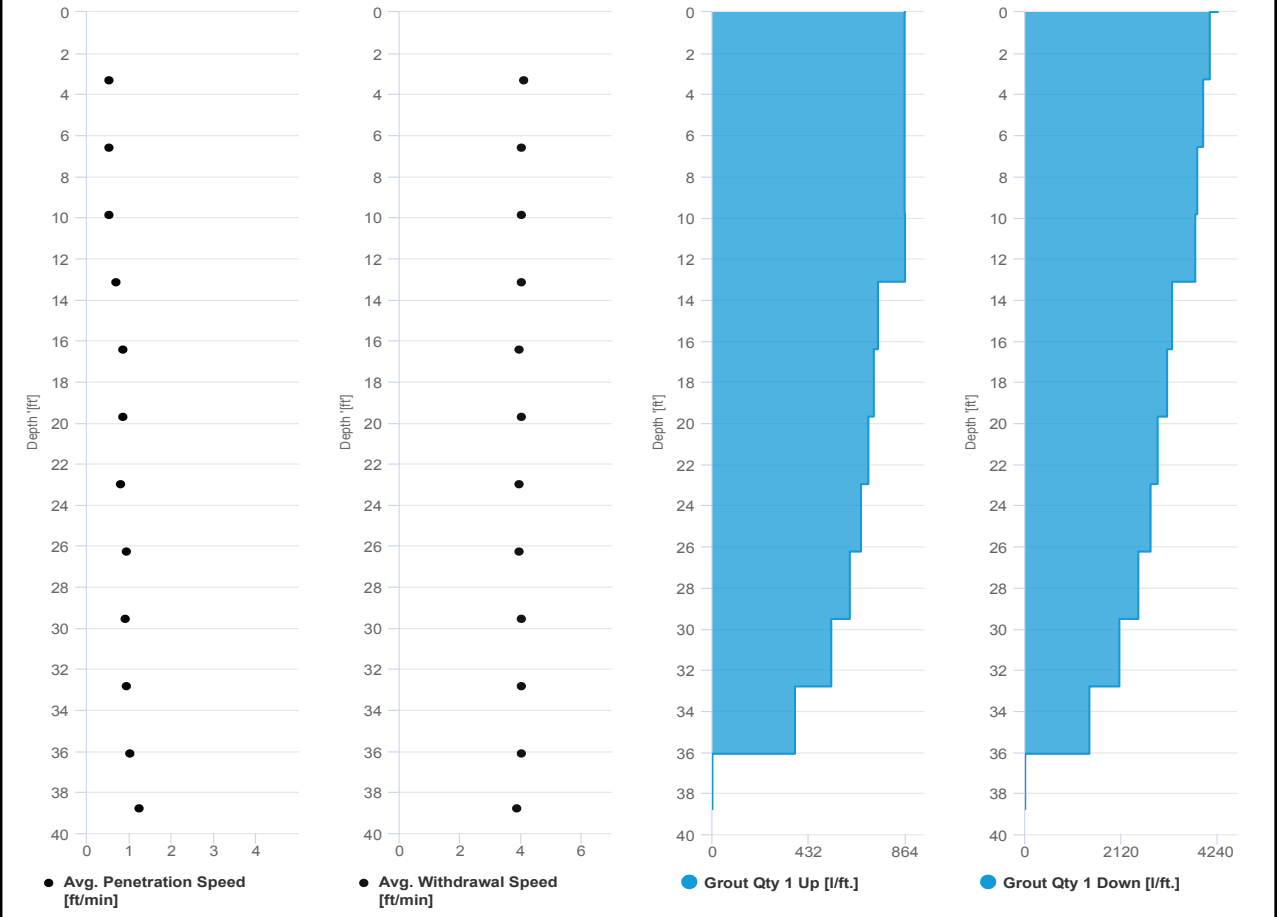


Project name	Douglass Street BCG ISS	Element name	205a
		Project number	

		Start date	10/08/2024
--	--	------------	------------

Drilling rig	BG36H_5717
--------------	------------

<b>Details</b>		Start time	08:15 AM
Max. depth	38.78 ft.	End Date	10/08/2024
Volume/m 1	44.143 ft <sup>3</sup>	End time	09:18 AM
		Production duration	01:03:10
		Final depth time	09:08 AM
		Total suspension quantity	522.975 ft <sup>3</sup>



# SCM Report

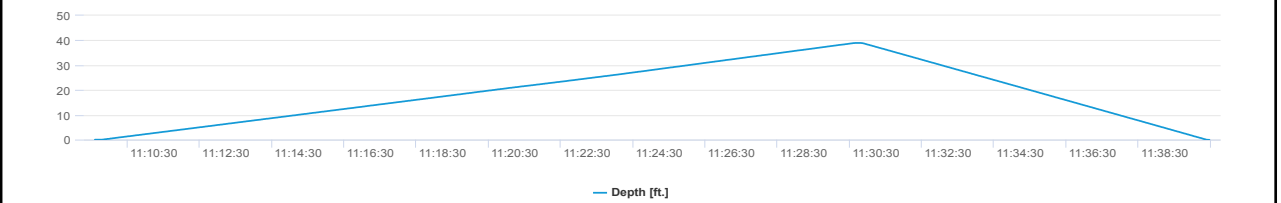
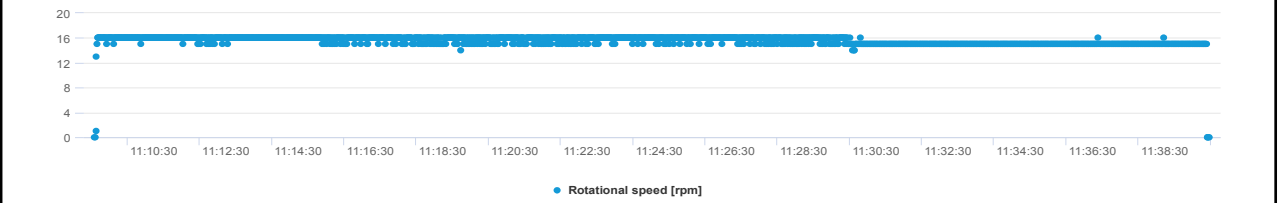
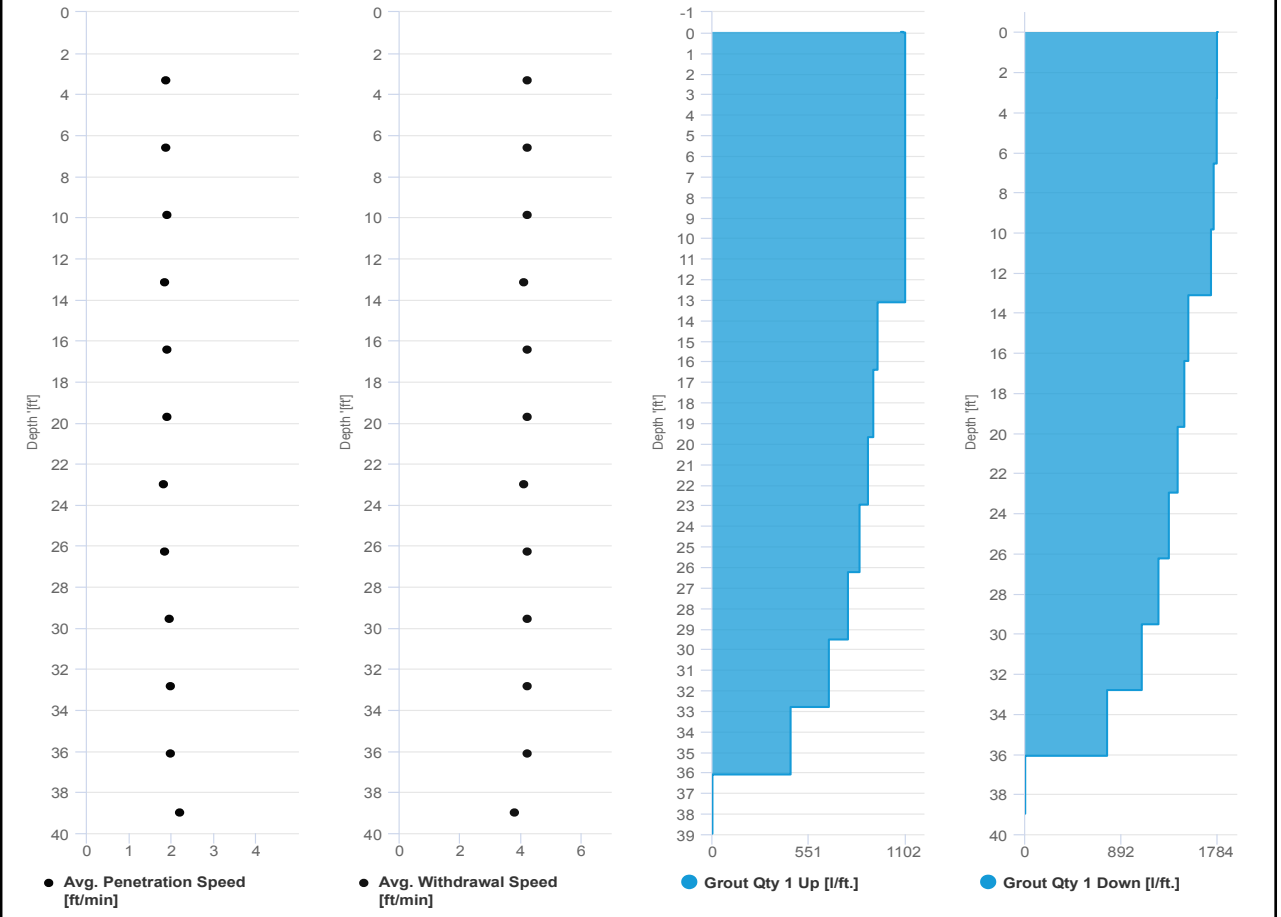


Project name: Douglass Street BCG ISS      Element name: 203b  
Project number

Start date: 10/08/2024

Drilling rig: BG36H\_5717

<b>Details</b>		Start time: 11:09 AM	
Max. depth: 38.976 ft.		End Date: 10/08/2024	
Volume/m 1: 23.308 ft³		End time: 11:40 AM	
		Production duration: 00:30:53	
		Final depth time: 11:30 AM	
		Total suspension quantity: 277.538 ft³	



# SCM Report

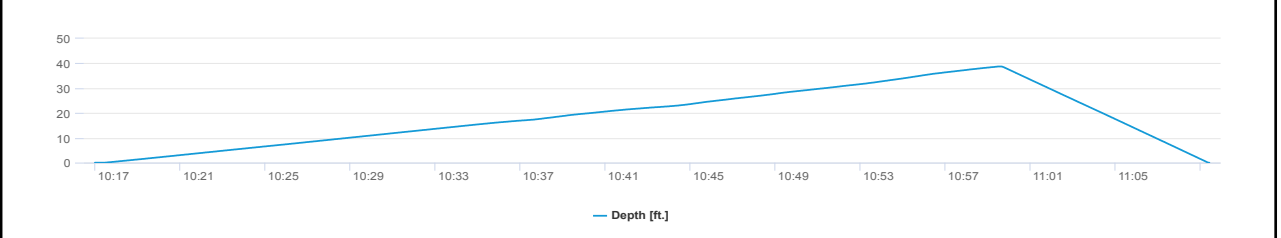
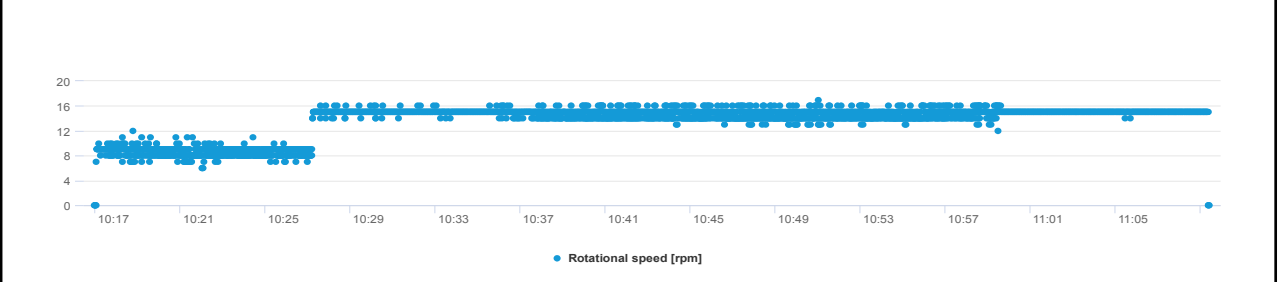
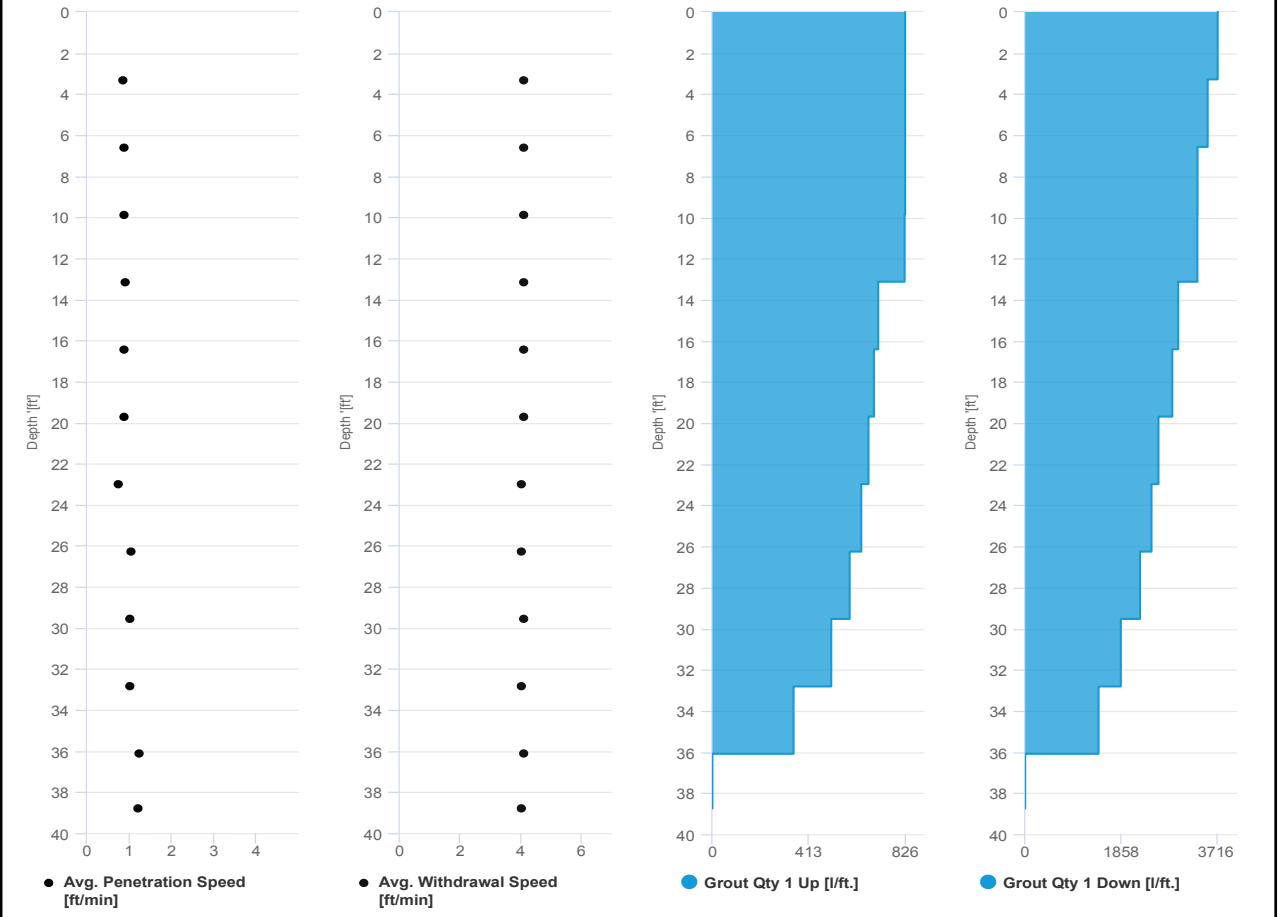


Project name: Douglass Street BCG ISS      Element name: 203a  
 Project number

Start date: 10/08/2024

Drilling rig: BG36H\_5717

<b>Details</b>		Start time: 10:16 AM	
Max. depth:	38.747 ft.	End Date:	10/08/2024
Volume/m 1:	36.021 ft <sup>3</sup>	End time:	11:09 AM
		Production duration:	00:52:28
		Final depth time:	10:59 AM
		Total suspension quantity:	423.847 ft <sup>3</sup>

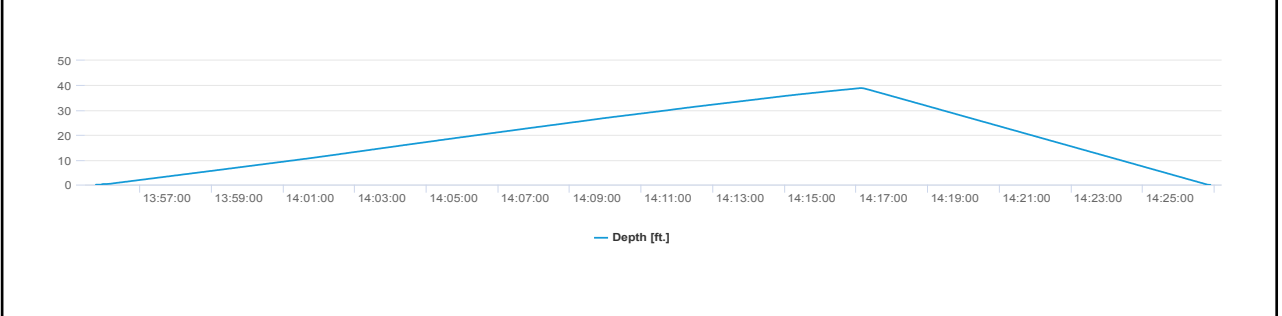
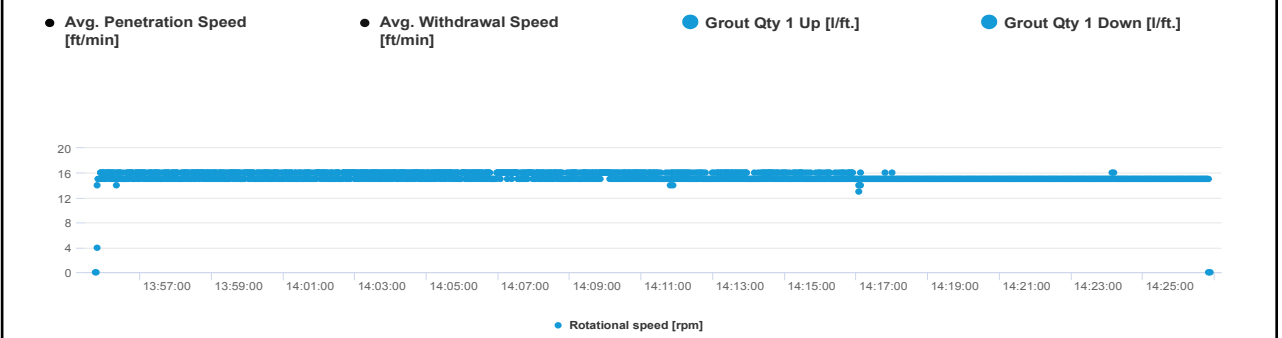
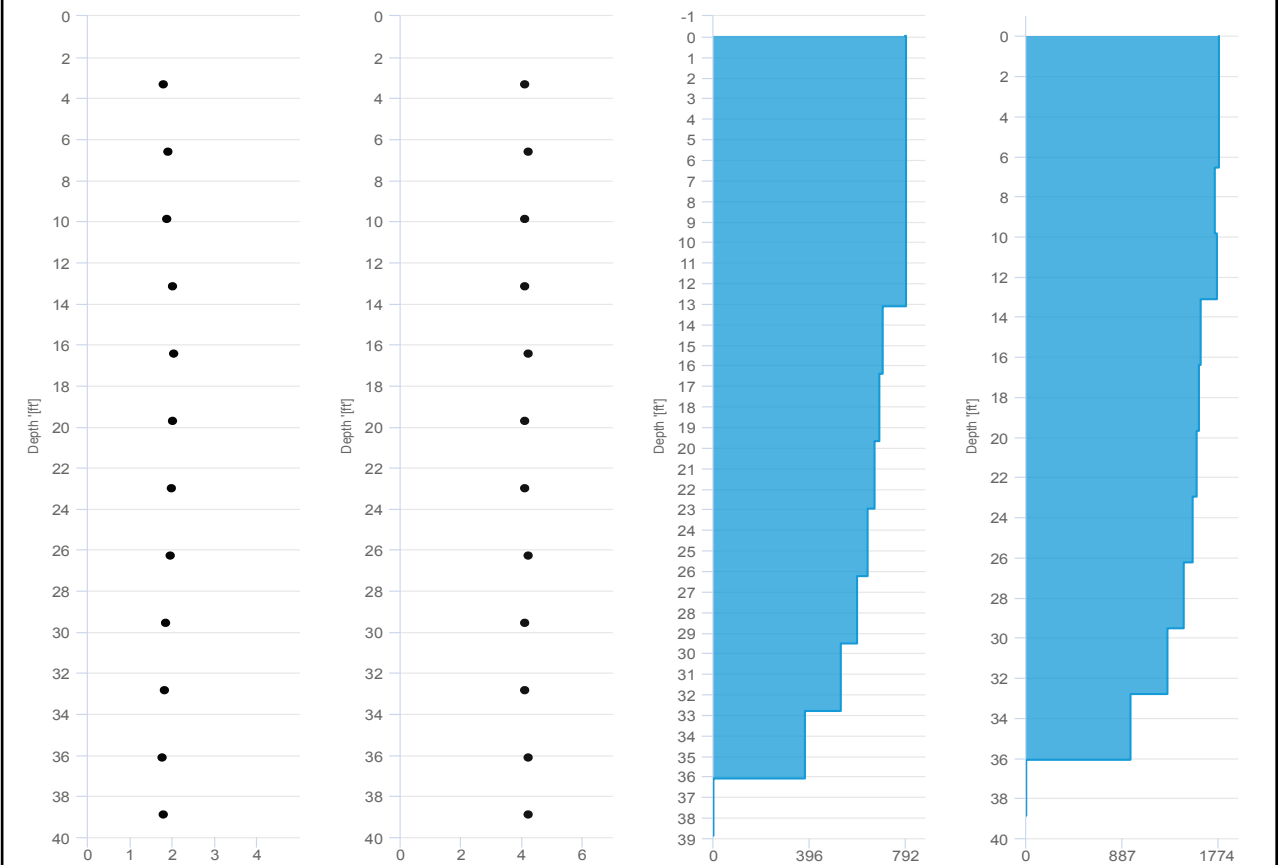


# SCM Report



Project name	Douglass Street BCG ISS	Element name	201b
		Project number	
		Start date	10/08/2024
Drilling rig	BG36H_5717		

<b>Details</b>			
Max. depth	38.878 ft.	Start time	01:55 PM
Volume/m 1	21.189 ft³	End Date	10/08/2024
		End time	02:26 PM
		Production duration	00:31:08
		Final depth time	02:17 PM
		Total suspension quantity	252.924 ft³



# SCM Report

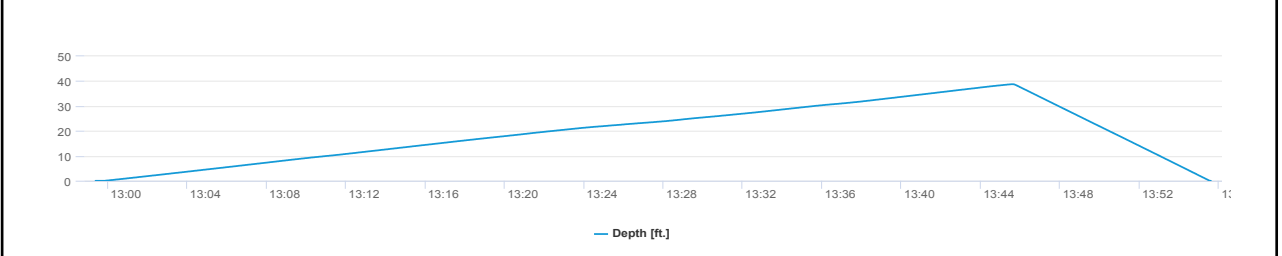
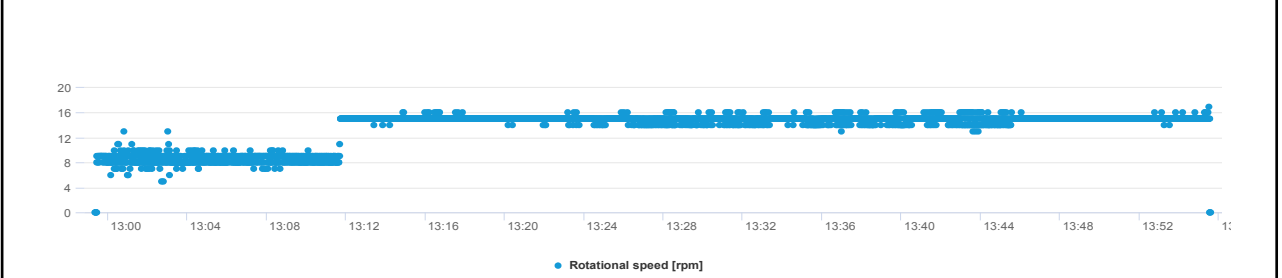
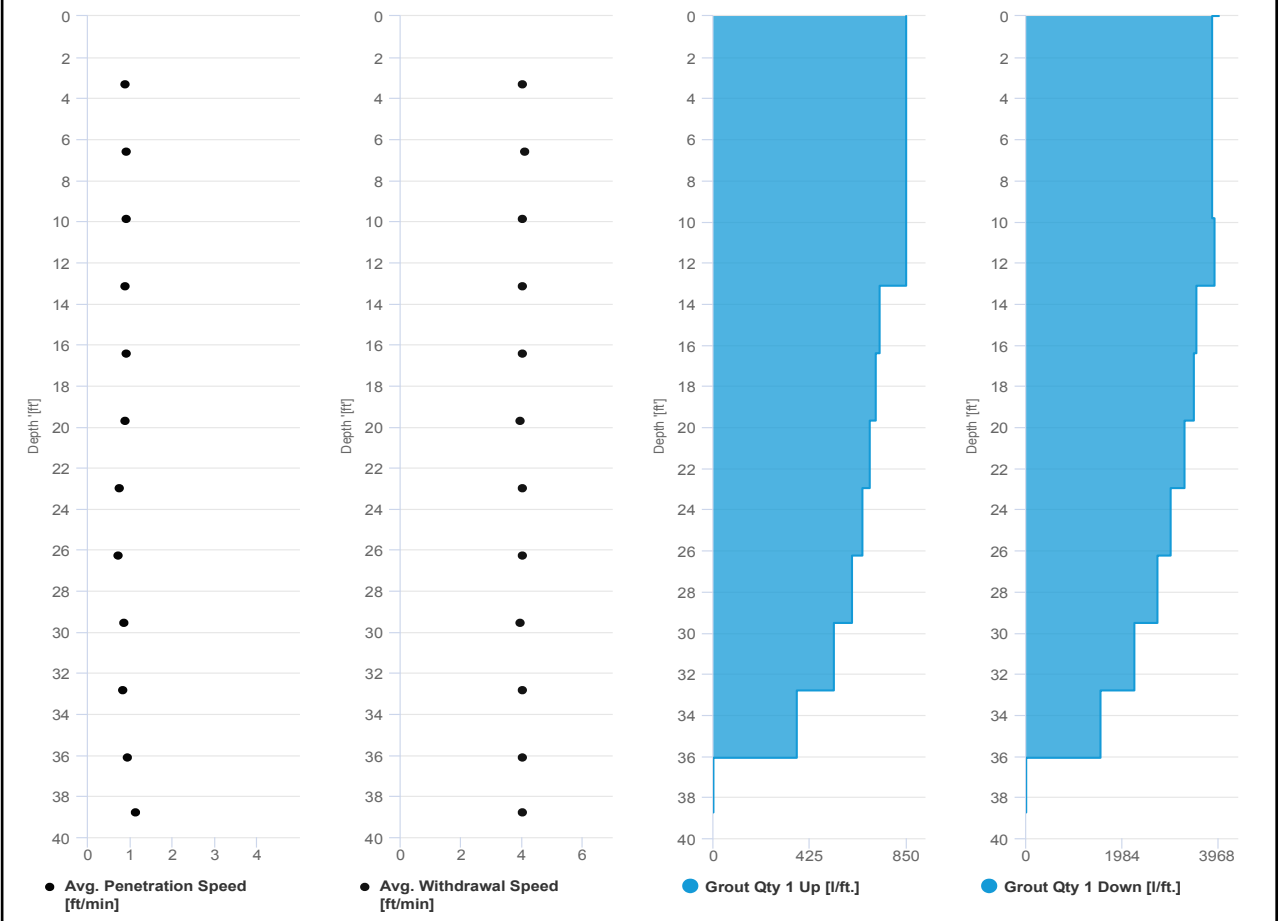


Project name	Douglass Street BCG ISS	Element name	201a
		Project number	

		Start date	10/08/2024
--	--	------------	------------

Drilling rig	BG36H_5717
--------------	------------

<b>Details</b>			
Max. depth	38.747 ft.	Start time	12:59 PM
Volume/m 1	38.846 ft <sup>3</sup>	End Date	10/08/2024
		End time	01:55 PM
		Production duration	00:56:14
		Final depth time	01:45 PM
		Total suspension quantity	460.857 ft <sup>3</sup>



# SCM Report

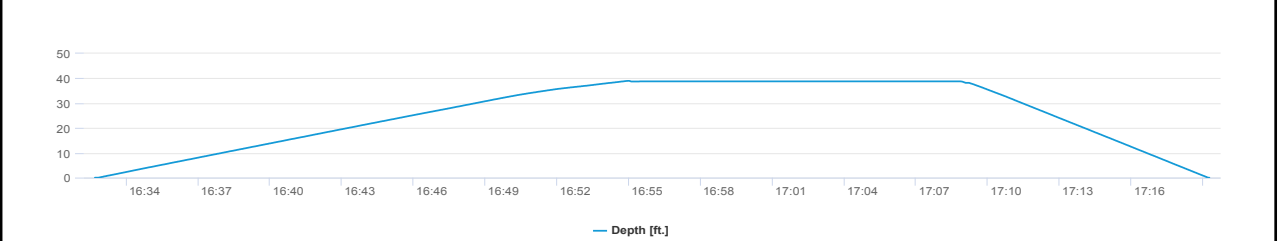
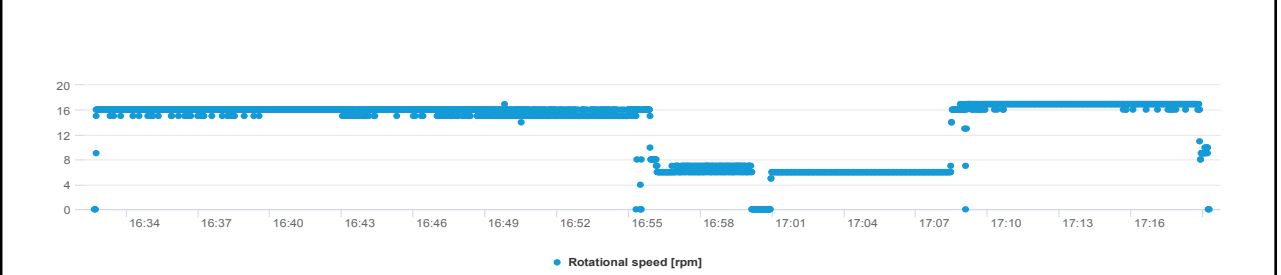
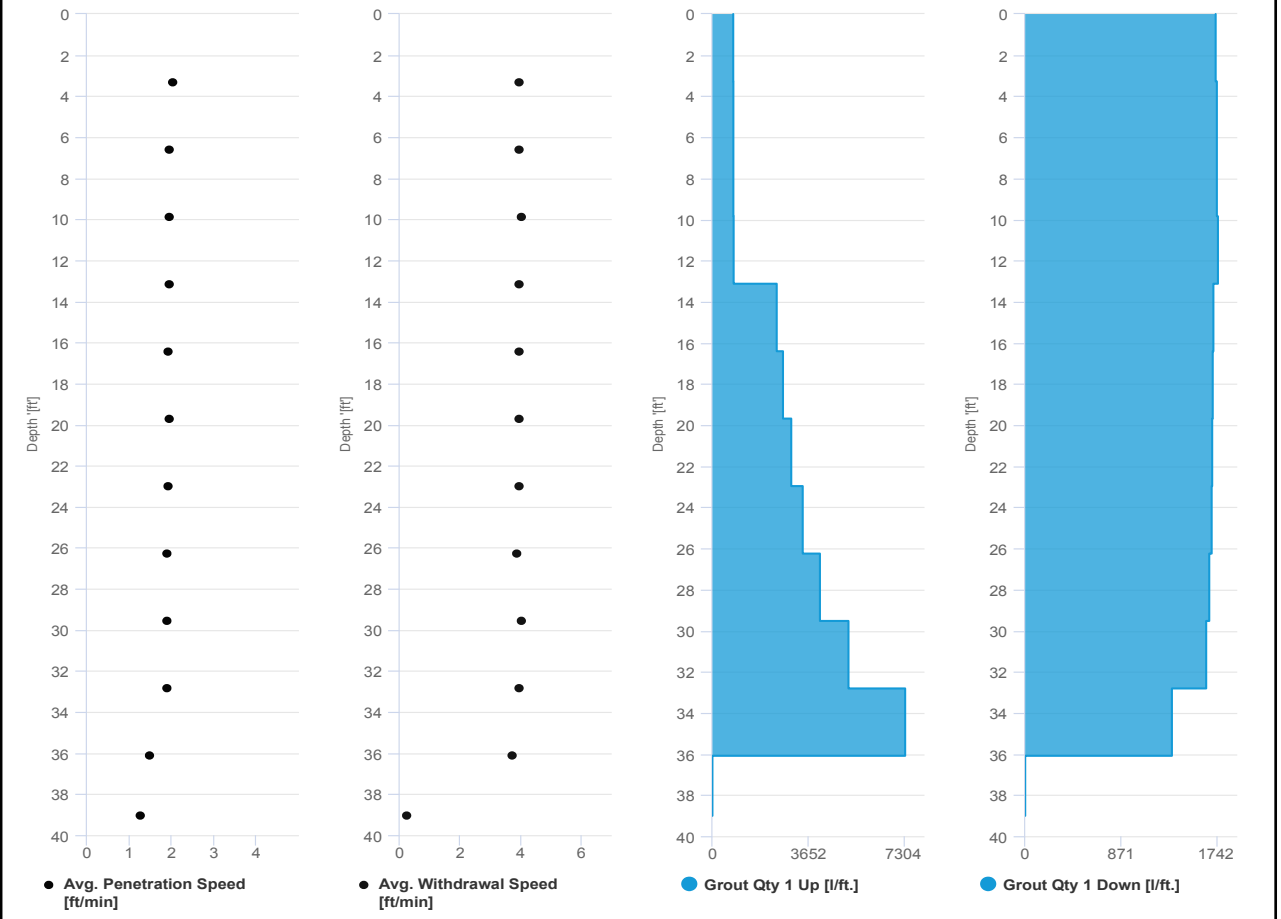


Project name	Douglass Street BCG ISS	Element name	199b
		Project number	

		Start date	10/08/2024
--	--	------------	------------

Drilling rig	BG36H_5717
--------------	------------

<b>Details</b>			
Max. depth	39.009 ft.	Start time	04:32 PM
Volume/m 1	30.724 ft³	End Date	10/08/2024
		End time	05:19 PM
		Production duration	00:46:36
		Final depth time	04:54 PM
		Total suspension quantity	367.273 ft³



# SCM Report

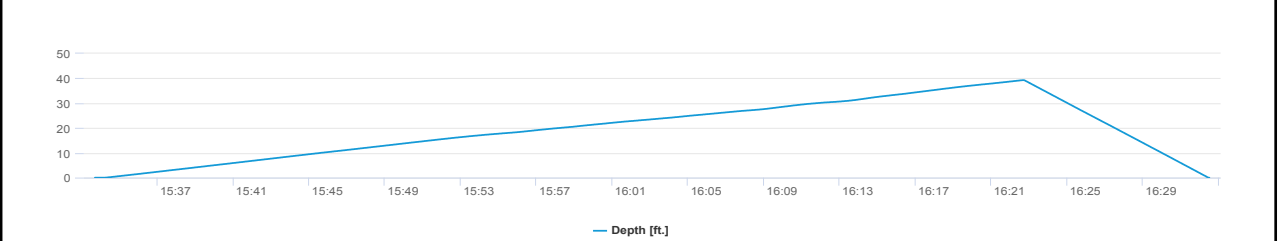
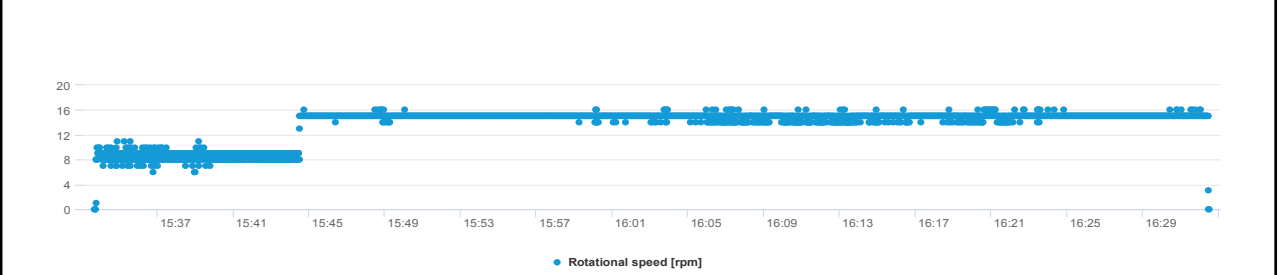
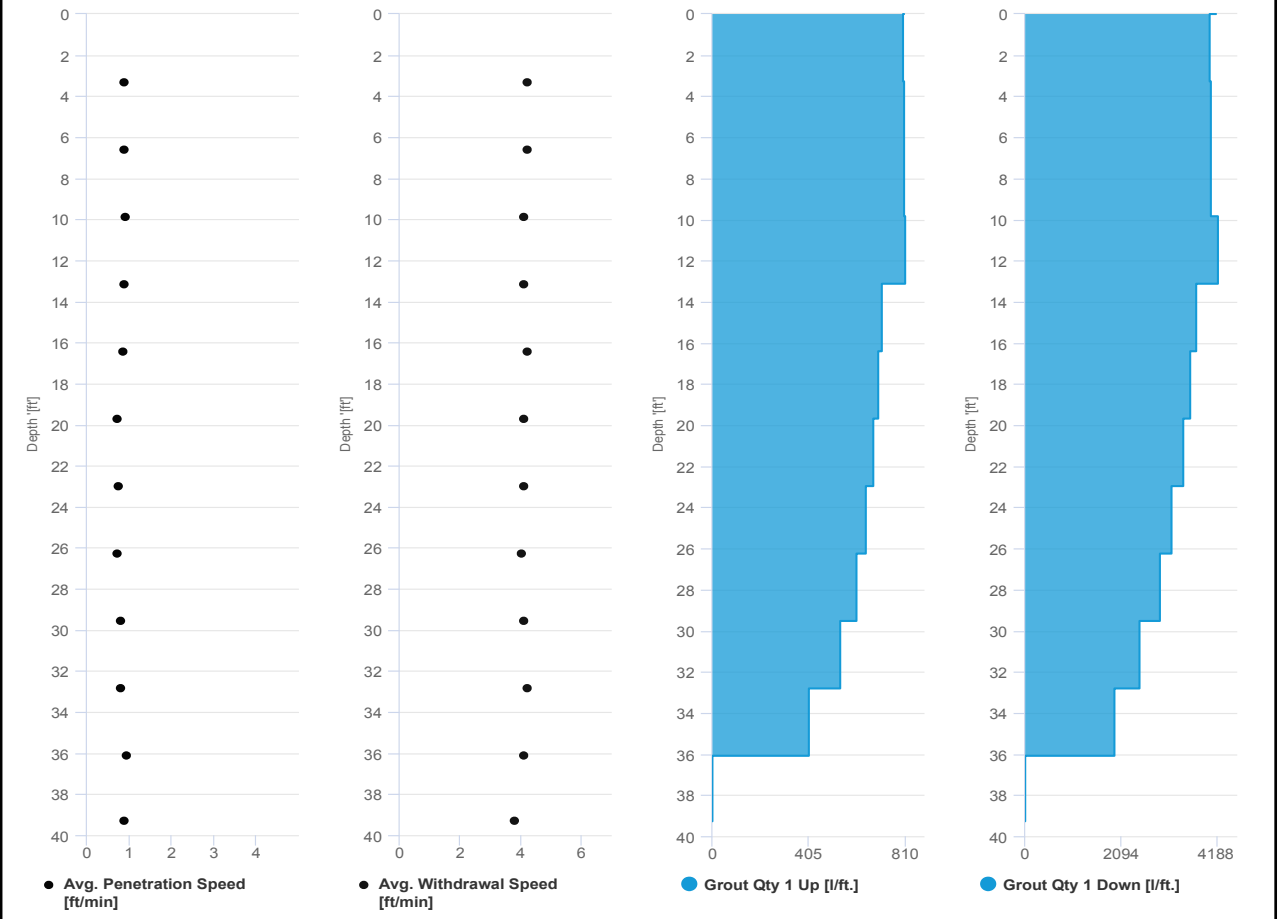


Project name	Douglass Street BCG ISS	Element name	199a
		Project number	

		Start date	10/08/2024
--	--	------------	------------

Drilling rig	BG36H_5717
--------------	------------

<b>Details</b>			
Max. depth	39.272 ft.	Start time	03:33 PM
Volume/m 1	39.199 ft³	End Date	10/08/2024
		End time	04:32 PM
		Production duration	00:58:50
		Final depth time	04:22 PM
		Total suspension quantity	471.098 ft³







**IMPACT ENVIRONMENTAL**

welcome to solid ground...

170 Keyland Court | Bohemia | NY | 11716 | 631.269.8800

[www.impactenvironmental.com](http://www.impactenvironmental.com)

**UPWIND CAMP READINGS**

251 DOUGLASS STREET, BROOKLYN, NY

Instrument Name	DustTrak II
Model Number	8530
Serial Number	8530224603
Firmware Version	3.1
Calibration Date	4/3/2024
Test Name	MANUAL_003
Test Start Time	6:51:49 AM
Test Start Date	10/8/2024
Test Length [D:H:M]	0:10:53
Test Interval [M:S]	1:00
Mass Average [mg/m3]	0.02
Mass Minimum [mg/m3]	0.004
Mass Maximum [mg/m3]	0.601
Mass TWA [mg/m3]	0.022
Photometric User Cal	1
Flow User Cal	0
Errors	
Number of Samples	653

Elapsed Time [s]	Mass [mg/m3]	Alarms	Errors
6:51	0.411		
6:52	0.012		
6:53	0.01		
6:54	0.013		
6:55	0.019		
6:56	0.01		
6:57	0.008		
6:58	0.008		
6:59	0.008		
7:00	0.008		
7:01	0.01		
7:02	0.01		
7:03	0.007		
7:04	0.007		
7:05	0.008		
7:06	0.008		
7:07	0.012		
7:08	0.012		
7:09	0.009		
7:10	0.007		
7:11	0.008		
7:12	0.006		
7:13	0.007		
7:14	0.007		
7:15	0.015		
7:16	0.031		
7:17	0.012		

7:18	0.008
7:19	0.006
7:20	0.006
7:21	0.006
7:22	0.007
7:23	0.005
7:24	0.006
7:25	0.009
7:26	0.008
7:27	0.006
7:28	0.005
7:29	0.029
7:30	0.007
7:31	0.009
7:32	0.017
7:33	0.009
7:34	0.011
7:35	0.017
7:36	0.007
7:37	0.006
7:38	0.007
7:39	0.007
7:40	0.009
7:41	0.006
7:42	0.006
7:43	0.005
7:44	0.007
7:45	0.006
7:46	0.009
7:47	0.007
7:48	0.005
7:49	0.01
7:50	0.007
7:51	0.006
7:52	0.006
7:53	0.012
7:54	0.013
7:55	0.038
7:56	0.01
7:57	0.009
7:58	0.015
7:59	0.025
8:00	0.011
8:01	0.008
8:02	0.013
8:03	0.018
8:04	0.02

8:05	0.083
8:06	0.011
8:07	0.032
8:08	0.01
8:09	0.009
8:10	0.007
8:11	0.007
8:12	0.01
8:13	0.008
8:14	0.01
8:15	0.009
8:16	0.033
8:17	0.015
8:18	0.017
8:19	0.008
8:20	0.01
8:21	0.122
8:22	0.045
8:23	0.008
8:24	0.007
8:25	0.017
8:26	0.008
8:27	0.015
8:28	0.006
8:29	0.007
8:30	0.008
8:31	0.011
8:32	0.011
8:33	0.01
8:34	0.013
8:35	0.017
8:36	0.01
8:37	0.006
8:38	0.006
8:39	0.013
8:40	0.018
8:41	0.012
8:42	0.007
8:43	0.005
8:44	0.02
8:45	0.014
8:46	0.007
8:47	0.007
8:48	0.005
8:49	0.005
8:50	0.005
8:51	0.004

8:52	0.005
8:53	0.005
8:54	0.005
8:55	0.007
8:56	0.007
8:57	0.006
8:58	0.007
8:59	0.007
9:00	0.008
9:01	0.007
9:02	0.007
9:03	0.007
9:04	0.01
9:05	0.007
9:06	0.009
9:07	0.008
9:08	0.007
9:09	0.007
9:10	0.007
9:11	0.006
9:12	0.006
9:13	0.006
9:14	0.016
9:15	0.012
9:16	0.008
9:17	0.007
9:18	0.006
9:19	0.011
9:20	0.009
9:21	0.009
9:22	0.01
9:23	0.013
9:24	0.026
9:25	0.011
9:26	0.005
9:27	0.005
9:28	0.01
9:29	0.008
9:30	0.012
9:31	0.013
9:32	0.011
9:33	0.01
9:34	0.018
9:35	0.011
9:36	0.007
9:37	0.01
9:38	0.011

9:39	0.015
9:40	0.019
9:41	0.016
9:42	0.026
9:43	0.03
9:44	0.062
9:45	0.021
9:46	0.008
9:47	0.009
9:48	0.008
9:49	0.013
9:50	0.007
9:51	0.006
9:52	0.009
9:53	0.008
9:54	0.007
9:55	0.006
9:56	0.01
9:57	0.015
9:58	0.014
9:59	0.007
10:00	0.005
10:01	0.008
10:02	0.01
10:03	0.028
10:04	0.01
10:05	0.008
10:06	0.008
10:07	0.006
10:08	0.01
10:09	0.009
10:10	0.006
10:11	0.007
10:12	0.005
10:13	0.006
10:14	0.008
10:15	0.006
10:16	0.005
10:17	0.007
10:18	0.017
10:19	0.01
10:20	0.007
10:21	0.006
10:22	0.009
10:23	0.01
10:24	0.009
10:25	0.009

10:26	0.009
10:27	0.012
10:28	0.013
10:29	0.006
10:30	0.008
10:31	0.007
10:32	0.01
10:33	0.005
10:34	0.013
10:35	0.027
10:36	0.069
10:37	0.077
10:38	0.096
10:39	0.09
10:40	0.035
10:41	0.076
10:42	0.08
10:43	0.016
10:44	0.009
10:45	0.007
10:46	0.061
10:47	0.075
10:48	0.048
10:49	0.07
10:50	0.056
10:51	0.042
10:52	0.012
10:53	0.024
10:54	0.011
10:55	0.008
10:56	0.006
10:57	0.005
10:58	0.006
10:59	0.005
11:00	0.006
11:01	0.012
11:02	0.011
11:03	0.013
11:04	0.034
11:05	0.076
11:06	0.079
11:07	0.222
11:08	0.024
11:09	0.031
11:10	0.064
11:11	0.049
11:12	0.015

11:13	0.601
11:14	0.277
11:15	0.011
11:16	0.019
11:17	0.013
11:18	0.01
11:19	0.01
11:20	0.008
11:21	0.01
11:22	0.014
11:23	0.006
11:24	0.007
11:25	0.007
11:26	0.009
11:27	0.05
11:28	0.014
11:29	0.006
11:30	0.006
11:31	0.006
11:32	0.007
11:33	0.007
11:34	0.009
11:35	0.01
11:36	0.009
11:37	0.009
11:38	0.009
11:39	0.011
11:40	0.009
11:41	0.008
11:42	0.009
11:43	0.008
11:44	0.008
11:45	0.007
11:46	0.006
11:47	0.007
11:48	0.007
11:49	0.008
11:50	0.008
11:51	0.006
11:52	0.007
11:53	0.007
11:54	0.007
11:55	0.011
11:56	0.012
11:57	0.007
11:58	0.008
11:59	0.009



12:00	0.01
12:01	0.009
12:02	0.014
12:03	0.009
12:04	0.008
12:05	0.013
12:06	0.015
12:07	0.055
12:08	0.01
12:09	0.009
12:10	0.007
12:11	0.007
12:12	0.008
12:13	0.009
12:14	0.013
12:15	0.008
12:16	0.009
12:17	0.012
12:18	0.026
12:19	0.019
12:20	0.009
12:21	0.008
12:22	0.011
12:23	0.008
12:24	0.008
12:25	0.008
12:26	0.008
12:27	0.011
12:28	0.011
12:29	0.01
12:30	0.009
12:31	0.01
12:32	0.009
12:33	0.009
12:34	0.012
12:35	0.016
12:36	0.015
12:37	0.017
12:38	0.021
12:39	0.022
12:40	0.031
12:41	0.031
12:42	0.016
12:43	0.014
12:44	0.016
12:45	0.023
12:46	0.023

12:47	0.013
12:48	0.013
12:49	0.017
12:50	0.021
12:51	0.011
12:52	0.022
12:53	0.02
12:54	0.03
12:55	0.021
12:56	0.019
12:57	0.021
12:58	0.024
12:59	0.034
13:00	0.057
13:01	0.096
13:02	0.031
13:03	0.025
13:04	0.024
13:05	0.048
13:06	0.06
13:07	0.079
13:08	0.158
13:09	0.081
13:10	0.02
13:11	0.021
13:12	0.031
13:13	0.013
13:14	0.013
13:15	0.014
13:16	0.015
13:17	0.012
13:18	0.013
13:19	0.011
13:20	0.012
13:21	0.016
13:22	0.02
13:23	0.014
13:24	0.016
13:25	0.017
13:26	0.016
13:27	0.024
13:28	0.026
13:29	0.02
13:30	0.014
13:31	0.036
13:32	0.042
13:33	0.029

13:34	0.018
13:35	0.029
13:36	0.016
13:37	0.09
13:38	0.072
13:39	0.018
13:40	0.018
13:41	0.034
13:42	0.016
13:43	0.018
13:44	0.014
13:45	0.015
13:46	0.014
13:47	0.018
13:48	0.018
13:49	0.021
13:50	0.029
13:51	0.016
13:52	0.019
13:53	0.02
13:54	0.043
13:55	0.038
13:56	0.052
13:57	0.023
13:58	0.016
13:59	0.021
14:00	0.017
14:01	0.017
14:02	0.026
14:03	0.021
14:04	0.028
14:05	0.03
14:06	0.018
14:07	0.017
14:08	0.019
14:09	0.02
14:10	0.02
14:11	0.022
14:12	0.021
14:13	0.021
14:14	0.018
14:15	0.024
14:16	0.028
14:17	0.035
14:18	0.029
14:19	0.026
14:20	0.024

14:21	0.016
14:22	0.02
14:23	0.026
14:24	0.016
14:25	0.047
14:26	0.258
14:27	0.197
14:28	0.026
14:29	0.013
14:30	0.127
14:31	0.085
14:32	0.07
14:33	0.056
14:34	0.023
14:35	0.023
14:36	0.04
14:37	0.04
14:38	0.019
14:39	0.017
14:40	0.015
14:41	0.034
14:42	0.025
14:43	0.014
14:44	0.013
14:45	0.014
14:46	0.018
14:47	0.018
14:48	0.012
14:49	0.011
14:50	0.015
14:51	0.012
14:52	0.016
14:53	0.021
14:54	0.015
14:55	0.013
14:56	0.011
14:57	0.016
14:58	0.018
14:59	0.012
15:00	0.012
15:01	0.013
15:02	0.012
15:03	0.012
15:04	0.013
15:05	0.014
15:06	0.016
15:07	0.013

15:08	0.013
15:09	0.012
15:10	0.012
15:11	0.013
15:12	0.019
15:13	0.022
15:14	0.018
15:15	0.023
15:16	0.016
15:17	0.014
15:18	0.018
15:19	0.034
15:20	0.025
15:21	0.018
15:22	0.018
15:23	0.013
15:24	0.013
15:25	0.011
15:26	0.01
15:27	0.013
15:28	0.013
15:29	0.018
15:30	0.012
15:31	0.022
15:32	0.016
15:33	0.016
15:34	0.015
15:35	0.014
15:36	0.011
15:37	0.012
15:38	0.014
15:39	0.028
15:40	0.016
15:41	0.011
15:42	0.013
15:43	0.012
15:44	0.012
15:45	0.011
15:46	0.011
15:47	0.012
15:48	0.013
15:49	0.013
15:50	0.014
15:51	0.013
15:52	0.013
15:53	0.012
15:54	0.012

15:55	0.018
15:56	0.056
15:57	0.016
15:58	0.013
15:59	0.023
16:00	0.013
16:01	0.015
16:02	0.017
16:03	0.017
16:04	0.011
16:05	0.011
16:06	0.012
16:07	0.022
16:08	0.014
16:09	0.012
16:10	0.011
16:11	0.01
16:12	0.011
16:13	0.012
16:14	0.01
16:15	0.01
16:16	0.01
16:17	0.01
16:18	0.01
16:19	0.01
16:20	0.01
16:21	0.011
16:22	0.013
16:23	0.011
16:24	0.012
16:25	0.012
16:26	0.012
16:27	0.012
16:28	0.011
16:29	0.011
16:30	0.012
16:31	0.014
16:32	0.012
16:33	0.013
16:34	0.013
16:35	0.014
16:36	0.015
16:37	0.024
16:38	0.012
16:39	0.02
16:40	0.022
16:41	0.015

16:42	0.013
16:43	0.012
16:44	0.012
16:45	0.01
16:46	0.012
16:47	0.01
16:48	0.01
16:49	0.011
16:50	0.011
16:51	0.011
16:52	0.036
16:53	0.011
16:54	0.014
16:55	0.01
16:56	0.009
16:57	0.01
16:58	0.01
16:59	0.009
17:00	0.011
17:01	0.011
17:02	0.01
17:03	0.01
17:04	0.009
17:05	0.009
17:06	0.009
17:07	0.009
17:08	0.014
17:09	0.015
17:10	0.02
17:11	0.015
17:12	0.009
17:13	0.012
17:14	0.013
17:15	0.01
17:16	0.01
17:17	0.009
17:18	0.014
17:19	0.011
17:20	0.013
17:21	0.009
17:22	0.009
17:23	0.01
17:24	0.012
17:25	0.016
17:26	0.012
17:27	0.009
17:28	0.079

17:29	0.016
17:30	0.01
17:31	0.012
17:32	0.012
17:33	0.054
17:34	0.069
17:35	0.047
17:36	0.018
17:37	0.008
17:38	0.188
17:39	0.12
17:40	0.015
17:41	0.018
17:42	0.029
17:43	0.022

























592-927198	10/8/2024 7:31 Readings	PID	SC23030235W3	Normal	0
592-927198	10/8/2024 7:30 Readings	PID	SC23030235W3	Normal	0
592-927198	10/8/2024 7:29 Readings	PID	SC23030235W3	Normal	0
592-927198	10/8/2024 7:28 Readings	PID	SC23030235W3	Normal	0
592-927198	10/8/2024 7:27 CONFIG	PID	SC23030235W3		

**DOWNWIND CAMP READINGS**

251 DOUGLASS STREET, BROOKLYN, NY



Instrument Name	DustTrak DRX
Model Number	8533
Serial Number	8533181207
Firmware Version	3.1
Calibration Date	7/11/2024
Test Name	MANUAL_003
Test Start Time	7:00:53 AM
Test Start Date	10/8/2024
Test Length [D:H:M]	0:10:49
Test Interval [M:S]	1:00
PM10 Average [mg/m3]	0.035
PM10 Minimum [mg/m3]	0.005
PM10 Maximum [mg/m3]	1.31
PM10 TWA [mg/m3]	0.031
Photometric User Cal	1
Size Correction User Cal	1
Flow User Cal	0
Errors	
Number of Samples	649

Elapsed Time [s]	PM10 [mg/m3]	Alarms	Errors
7:00	0.216		
7:01	0.025		
7:02	0.014		
7:03	0.011		
7:04	0.01		
7:05	0.008		
7:06	0.016		
7:07	0.023		
7:08	0.011		
7:09	0.009		
7:10	0.009		
7:11	0.015		
7:12	0.03		
7:13	0.019		
7:14	0.009		
7:15	0.012		
7:16	0.029		
7:17	0.014		
7:18	0.008		
7:19	0.01		
7:20	0.007		
7:21	0.006		
7:22	0.008		
7:23	0.01		
7:24	0.006		
7:25	0.012		

7:26	0.008
7:27	0.005
7:28	0.005
7:29	0.008
7:30	0.008
7:31	0.008
7:32	0.011
7:33	0.01
7:34	0.016
7:35	0.015
7:36	0.006
7:37	0.005
7:38	0.008
7:39	0.005
7:40	0.006
7:41	0.008
7:42	0.006
7:43	0.005
7:44	0.005
7:45	0.008
7:46	0.009
7:47	0.019
7:48	0.008
7:49	0.007
7:50	0.006
7:51	0.012
7:52	0.012
7:53	0.012
7:54	0.033
7:55	0.1
7:56	0.029
7:57	0.121
7:58	0.594
7:59	0.158
8:00	0.078
8:01	0.019
8:02	0.013
8:03	0.027
8:04	0.026
8:05	0.014
8:06	0.015
8:07	0.025
8:08	0.092
8:09	0.035
8:10	0.033
8:11	0.013
8:12	0.035

8:13	0.015
8:14	0.017
8:15	0.01
8:16	0.019
8:17	0.011
8:18	0.04
8:19	0.155
8:20	1.31
8:21	0.101
8:22	0.104
8:23	0.067
8:24	0.057
8:25	0.026
8:26	0.028
8:27	0.026
8:28	0.006
8:29	0.01
8:30	0.009
8:31	0.009
8:32	0.015
8:33	0.021
8:34	0.019
8:35	0.019
8:36	0.017
8:37	0.014
8:38	0.008
8:39	0.011
8:40	0.014
8:41	0.016
8:42	0.007
8:43	0.005
8:44	0.01
8:45	0.011
8:46	0.008
8:47	0.008
8:48	0.006
8:49	0.005
8:50	0.005
8:51	0.005
8:52	0.006
8:53	0.005
8:54	0.005
8:55	0.008
8:56	0.007
8:57	0.006
8:58	0.007
8:59	0.006

9:00	0.009
9:01	0.008
9:02	0.006
9:03	0.007
9:04	0.01
9:05	0.006
9:06	0.006
9:07	0.009
9:08	0.007
9:09	0.022
9:10	0.008
9:11	0.01
9:12	0.012
9:13	0.008
9:14	0.015
9:15	0.011
9:16	0.009
9:17	0.009
9:18	0.008
9:19	0.011
9:20	0.008
9:21	0.026
9:22	0.027
9:23	0.034
9:24	0.106
9:25	0.019
9:26	0.008
9:27	0.007
9:28	0.012
9:29	0.016
9:30	0.014
9:31	0.014
9:32	0.011
9:33	0.01
9:34	0.019
9:35	0.012
9:36	0.007
9:37	0.064
9:38	0.684
9:39	0.015
9:40	0.012
9:41	0.016
9:42	0.008
9:43	0.015
9:44	0.016
9:45	0.013
9:46	0.01



9:47	0.008
9:48	0.009
9:49	0.01
9:50	0.008
9:51	0.008
9:52	0.01
9:53	0.009
9:54	0.009
9:55	0.007
9:56	0.011
9:57	0.015
9:58	0.013
9:59	0.017
10:00	0.01
10:01	0.018
10:02	0.023
10:03	0.031
10:04	0.018
10:05	0.014
10:06	0.012
10:07	0.016
10:08	0.015
10:09	0.031
10:10	0.024
10:11	0.022
10:12	0.021
10:13	0.011
10:14	0.026
10:15	0.017
10:16	0.009
10:17	0.009
10:18	0.017
10:19	0.015
10:20	0.012
10:21	0.008
10:22	0.008
10:23	0.007
10:24	0.01
10:25	0.011
10:26	0.013
10:27	0.022
10:28	0.022
10:29	0.013
10:30	0.009
10:31	0.01
10:32	0.028
10:33	0.009

10:34	0.018
10:35	0.027
10:36	0.053
10:37	0.047
10:38	0.093
10:39	0.055
10:40	0.03
10:41	0.06
10:42	0.066
10:43	0.122
10:44	0.052
10:45	0.016
10:46	0.063
10:47	0.038
10:48	0.054
10:49	0.049
10:50	0.056
10:51	0.047
10:52	0.025
10:53	0.018
10:54	0.018
10:55	0.014
10:56	0.009
10:57	0.007
10:58	0.008
10:59	0.009
11:00	0.008
11:01	0.008
11:02	0.01
11:03	0.012
11:04	0.026
11:05	0.054
11:06	0.037
11:07	0.078
11:08	0.027
11:09	0.055
11:10	0.054
11:11	0.051
11:12	0.012
11:13	0.102
11:14	0.088
11:15	0.019
11:16	0.017
11:17	0.012
11:18	0.011
11:19	0.018
11:20	0.236

11:21	0.1
11:22	0.035
11:23	0.01
11:24	0.009
11:25	0.014
11:26	0.013
11:27	0.018
11:28	0.012
11:29	0.008
11:30	0.007
11:31	0.007
11:32	0.011
11:33	0.008
11:34	0.009
11:35	0.008
11:36	0.009
11:37	0.012
11:38	0.022
11:39	0.014
11:40	0.019
11:41	0.13
11:42	0.012
11:43	0.011
11:44	0.011
11:45	0.008
11:46	0.006
11:47	0.007
11:48	0.019
11:49	0.024
11:50	0.009
11:51	0.008
11:52	0.027
11:53	0.008
11:54	0.008
11:55	0.008
11:56	0.011
11:57	0.008
11:58	0.01
11:59	0.008
12:00	0.009
12:01	0.007
12:02	0.01
12:03	0.01
12:04	0.011
12:05	0.008
12:06	0.027
12:07	0.074

12:08	0.075
12:09	0.035
12:10	0.01
12:11	0.007
12:12	0.006
12:13	0.009
12:14	0.008
12:15	0.007
12:16	0.007
12:17	0.008
12:18	0.01
12:19	0.011
12:20	0.011
12:21	0.008
12:22	0.01
12:23	0.007
12:24	0.007
12:25	0.007
12:26	0.007
12:27	0.007
12:28	0.008
12:29	0.008
12:30	0.006
12:31	0.008
12:32	0.006
12:33	0.009
12:34	0.01
12:35	0.014
12:36	0.014
12:37	0.016
12:38	0.02
12:39	0.022
12:40	0.028
12:41	0.024
12:42	0.015
12:43	0.01
12:44	0.013
12:45	0.071
12:46	0.037
12:47	0.012
12:48	0.009
12:49	0.015
12:50	0.019
12:51	0.011
12:52	0.025
12:53	0.033
12:54	0.019

12:55	0.022
12:56	0.019
12:57	0.018
12:58	0.049
12:59	0.127
13:00	0.23
13:01	0.016
13:02	0.015
13:03	0.059
13:04	0.021
13:05	0.028
13:06	0.109
13:07	0.023
13:08	0.017
13:09	0.091
13:10	0.024
13:11	0.016
13:12	0.019
13:13	0.01
13:14	0.009
13:15	0.012
13:16	0.009
13:17	0.01
13:18	0.007
13:19	0.006
13:20	0.009
13:21	0.013
13:22	0.015
13:23	0.013
13:24	0.01
13:25	0.013
13:26	0.015
13:27	0.05
13:28	0.024
13:29	0.016
13:30	0.012
13:31	0.043
13:32	0.163
13:33	0.058
13:34	0.707
13:35	0.03
13:36	0.03
13:37	0.035
13:38	0.116
13:39	0.065
13:40	0.052
13:41	0.06

13:42	0.009
13:43	0.012
13:44	0.01
13:45	0.009
13:46	0.009
13:47	0.011
13:48	0.012
13:49	0.01
13:50	0.009
13:51	0.009
13:52	0.01
13:53	0.01
13:54	0.018
13:55	0.036
13:56	0.039
13:57	0.021
13:58	0.035
13:59	0.016
14:00	0.009
14:01	0.008
14:02	0.338
14:03	0.122
14:04	0.014
14:05	0.053
14:06	0.032
14:07	0.03
14:08	0.037
14:09	0.034
14:10	0.145
14:11	0.012
14:12	0.011
14:13	0.066
14:14	0.013
14:15	0.064
14:16	0.057
14:17	0.022
14:18	0.05
14:19	0.053
14:20	0.043
14:21	0.023
14:22	0.016
14:23	0.026
14:24	0.059
14:25	0.023
14:26	0.02
14:27	0.038
14:28	0.017

14:29	0.008
14:30	0.015
14:31	0.054
14:32	0.039
14:33	0.025
14:34	0.018
14:35	0.022
14:36	0.012
14:37	0.013
14:38	0.011
14:39	0.009
14:40	0.008
14:41	0.021
14:42	0.023
14:43	0.007
14:44	0.02
14:45	0.013
14:46	0.011
14:47	0.011
14:48	0.006
14:49	0.01
14:50	0.008
14:51	0.006
14:52	0.009
14:53	0.013
14:54	0.012
14:55	0.006
14:56	0.006
14:57	0.008
14:58	0.008
14:59	0.006
15:00	0.006
15:01	0.007
15:02	0.007
15:03	0.007
15:04	0.008
15:05	0.009
15:06	0.01
15:07	0.007
15:08	0.008
15:09	0.008
15:10	0.006
15:11	0.008
15:12	0.022
15:13	0.028
15:14	0.02
15:15	0.018

15:16	0.012
15:17	0.014
15:18	0.016
15:19	0.015
15:20	0.022
15:21	0.008
15:22	0.008
15:23	0.016
15:24	0.017
15:25	0.007
15:26	0.017
15:27	0.007
15:28	0.008
15:29	0.011
15:30	0.031
15:31	0.083
15:32	0.038
15:33	0.028
15:34	0.034
15:35	0.019
15:36	0.038
15:37	0.102
15:38	0.095
15:39	0.231
15:40	0.016
15:41	0.011
15:42	0.095
15:43	0.033
15:44	0.017
15:45	0.022
15:46	0.008
15:47	0.011
15:48	0.016
15:49	0.023
15:50	0.121
15:51	0.013
15:52	0.018
15:53	0.022
15:54	0.033
15:55	0.025
15:56	0.019
15:57	0.041
15:58	0.008
15:59	0.009
16:00	0.006
16:01	0.016
16:02	0.007



16:03	0.169
16:04	0.009
16:05	0.008
16:06	0.008
16:07	0.008
16:08	0.037
16:09	0.024
16:10	0.008
16:11	0.008
16:12	0.007
16:13	0.006
16:14	0.006
16:15	0.012
16:16	0.028
16:17	0.023
16:18	0.006
16:19	0.025
16:20	0.008
16:21	0.012
16:22	0.011
16:23	0.019
16:24	0.033
16:25	0.007
16:26	0.007
16:27	0.031
16:28	0.007
16:29	0.009
16:30	0.008
16:31	0.151
16:32	0.013
16:33	0.026
16:34	0.014
16:35	0.009
16:36	0.01
16:37	0.013
16:38	0.018
16:39	0.028
16:40	0.031
16:41	0.015
16:42	0.016
16:43	0.01
16:44	0.013
16:45	0.014
16:46	0.019
16:47	0.013
16:48	0.008
16:49	0.008

16:50	0.009
16:51	0.01
16:52	0.037
16:53	0.011
16:54	0.019
16:55	1.24
16:56	0.017
16:57	0.012
16:58	0.01
16:59	0.009
17:00	0.01
17:01	0.008
17:02	0.008
17:03	0.008
17:04	0.007
17:05	0.007
17:06	0.017
17:07	0.013
17:08	0.069
17:09	0.059
17:10	0.12
17:11	0.889
17:12	0.141
17:13	0.014
17:14	0.071
17:15	0.018
17:16	0.008
17:17	0.011
17:18	0.02
17:19	0.209
17:20	0.018
17:21	0.06
17:22	0.012
17:23	0.712
17:24	0.053
17:25	0.026
17:26	0.016
17:27	0.119
17:28	0.02
17:29	0.02
17:30	0.024
17:31	0.042
17:32	0.014
17:33	0.073
17:34	0.18
17:35	0.135
17:36	0.12

17:37	0.136
17:38	0.101
17:39	0.107
17:40	0.129
17:41	0.042
17:42	0.068
17:43	0.031
17:44	0.033
17:45	0.035
17:46	0.032
17:47	0.025
17:48	0.012























592-906376	10/8/2024 7:09 Readings	PID	SC23030159V4	Normal	0
592-906376	10/8/2024 7:08 Readings	PID	SC23030159V4	Normal	0
592-906376	10/8/2024 7:07 Readings	PID	SC23030159V4	Normal	0
592-906376	10/8/2024 7:06 Readings	PID	SC23030159V4	Normal	0
592-906376	10/8/2024 7:05 Readings	PID	SC23030159V4	Normal	0
592-906376	10/8/2024 7:04 Readings	PID	SC23030159V4	Normal	0
592-906376	10/8/2024 7:03 Readings	PID	SC23030159V4	Normal	0
592-906376	10/8/2024 7:02 Readings	PID	SC23030159V4	Normal	0
592-906376	10/8/2024 7:01 Readings	PID	SC23030159V4	Normal	0
592-906376	10/8/2024 7:00 Readings	PID	SC23030159V4	Normal	0
592-906376	10/8/2024 6:59 Readings	PID	SC23030159V4	Normal	0
592-906376	10/8/2024 6:58 Readings	PID	SC23030159V4	Normal	0
592-906376	10/8/2024 6:57 Readings	PID	SC23030159V4	Normal	0
592-906376	10/8/2024 6:56 Readings	PID	SC23030159V4	Normal	0
592-906376	10/8/2024 6:55 Readings	PID	SC23030159V4	Normal	0
592-906376	10/8/2024 6:54 Readings	PID	SC23030159V4	Normal	0
592-906376	10/8/2024 6:53 Readings	PID	SC23030159V4	Normal	0
592-906376	10/8/2024 6:52 Readings	PID	SC23030159V4	Normal	0
592-906376	10/8/2024 6:51 Readings	PID	SC23030159V4	Normal	0
592-906376	10/8/2024 6:50 CONFIG	PID	SC23030159V4	Normal	0

Instrument Name	DustTrak II
Model Number	8530
Serial Number	8530154916
Firmware Version	3.1
Calibration Date	8/2/2024
Test Name	MANUAL_003
Test Start Time	6:48:33 AM
Test Start Date	10/8/2024
Test Length [D:H:M]	0:10:59
Test Interval [M:S]	1:00
Mass Average [mg/m3]	0.015
Mass Minimum [mg/m3]	0.004
Mass Maximum [mg/m3]	0.464
Mass TWA [mg/m3]	0.016
Photometric User Cal	1
Flow User Cal	0
Errors	
Number of Samples	659

Elapsed Time [s]	Mass [mg/m3]	Alarms	Errors
6:48	0.464		
6:49	0.011		
6:50	0.008		
6:51	0.009		
6:52	0.008		
6:53	0.008		
6:54	0.008		
6:55	0.024		
6:56	0.011		
6:57	0.009		
6:58	0.009		
6:59	0.007		
7:00	0.007		
7:01	0.007		
7:02	0.008		
7:03	0.007		
7:04	0.007		
7:05	0.007		
7:06	0.008		
7:07	0.016		
7:08	0.017		
7:09	0.009		
7:10	0.009		
7:11	0.01		
7:12	0.009		
7:13	0.009		
7:14	0.009		

7:15	0.009
7:16	0.013
7:17	0.015
7:18	0.01
7:19	0.009
7:20	0.021
7:21	0.019
7:22	0.009
7:23	0.008
7:24	0.008
7:25	0.01
7:26	0.008
7:27	0.008
7:28	0.008
7:29	0.011
7:30	0.011
7:31	0.01
7:32	0.013
7:33	0.015
7:34	0.012
7:35	0.013
7:36	0.012
7:37	0.009
7:38	0.012
7:39	0.009
7:40	0.014
7:41	0.012
7:42	0.01
7:43	0.008
7:44	0.01
7:45	0.011
7:46	0.012
7:47	0.015
7:48	0.01
7:49	0.016
7:50	0.013
7:51	0.01
7:52	0.01
7:53	0.01
7:54	0.012
7:55	0.015
7:56	0.014
7:57	0.012
7:58	0.012
7:59	0.015
8:00	0.015
8:01	0.017



8:02	0.017
8:03	0.015
8:04	0.014
8:05	0.013
8:06	0.013
8:07	0.017
8:08	0.017
8:09	0.017
8:10	0.016
8:11	0.012
8:12	0.015
8:13	0.014
8:14	0.019
8:15	0.013
8:16	0.012
8:17	0.011
8:18	0.016
8:19	0.014
8:20	0.016
8:21	0.017
8:22	0.037
8:23	0.02
8:24	0.011
8:25	0.011
8:26	0.013
8:27	0.012
8:28	0.012
8:29	0.012
8:30	0.012
8:31	0.011
8:32	0.01
8:33	0.011
8:34	0.014
8:35	0.015
8:36	0.014
8:37	0.015
8:38	0.016
8:39	0.014
8:40	0.014
8:41	0.019
8:42	0.015
8:43	0.012
8:44	0.016
8:45	0.016
8:46	0.015
8:47	0.014
8:48	0.014

8:49	0.012
8:50	0.009
8:51	0.01
8:52	0.01
8:53	0.015
8:54	0.015
8:55	0.011
8:56	0.013
8:57	0.01
8:58	0.011
8:59	0.014
9:00	0.012
9:01	0.011
9:02	0.012
9:03	0.015
9:04	0.012
9:05	0.011
9:06	0.012
9:07	0.012
9:08	0.01
9:09	0.011
9:10	0.011
9:11	0.011
9:12	0.011
9:13	0.012
9:14	0.016
9:15	0.017
9:16	0.012
9:17	0.01
9:18	0.012
9:19	0.025
9:20	0.024
9:21	0.011
9:22	0.015
9:23	0.018
9:24	0.022
9:25	0.027
9:26	0.011
9:27	0.027
9:28	0.018
9:29	0.016
9:30	0.011
9:31	0.017
9:32	0.013
9:33	0.018
9:34	0.015
9:35	0.018

9:36	0.011
9:37	0.012
9:38	0.021
9:39	0.013
9:40	0.012
9:41	0.011
9:42	0.012
9:43	0.011
9:44	0.01
9:45	0.016
9:46	0.017
9:47	0.018
9:48	0.019
9:49	0.02
9:50	0.013
9:51	0.033
9:52	0.018
9:53	0.014
9:54	0.01
9:55	0.012
9:56	0.01
9:57	0.013
9:58	0.02
9:59	0.016
10:00	0.012
10:01	0.019
10:02	0.012
10:03	0.024
10:04	0.018
10:05	0.013
10:06	0.011
10:07	0.011
10:08	0.013
10:09	0.01
10:10	0.034
10:11	0.015
10:12	0.058
10:13	0.028
10:14	0.011
10:15	0.044
10:16	0.088
10:17	0.031
10:18	0.017
10:19	0.011
10:20	0.009
10:21	0.01
10:22	0.009

10:23	0.016
10:24	0.009
10:25	0.007
10:26	0.011
10:27	0.014
10:28	0.015
10:29	0.011
10:30	0.008
10:31	0.007
10:32	0.01
10:33	0.008
10:34	0.007
10:35	0.024
10:36	0.058
10:37	0.063
10:38	0.055
10:39	0.049
10:40	0.076
10:41	0.038
10:42	0.058
10:43	0.026
10:44	0.013
10:45	0.009
10:46	0.016
10:47	0.049
10:48	0.053
10:49	0.016
10:50	0.017
10:51	0.028
10:52	0.01
10:53	0.016
10:54	0.017
10:55	0.017
10:56	0.01
10:57	0.007
10:58	0.011
10:59	0.007
11:00	0.007
11:01	0.007
11:02	0.01
11:03	0.014
11:04	0.015
11:05	0.026
11:06	0.017
11:07	0.137
11:08	0.071
11:09	0.01

11:10	0.023
11:11	0.015
11:12	0.012
11:13	0.011
11:14	0.02
11:15	0.01
11:16	0.01
11:17	0.012
11:18	0.012
11:19	0.008
11:20	0.01
11:21	0.012
11:22	0.014
11:23	0.016
11:24	0.01
11:25	0.007
11:26	0.007
11:27	0.009
11:28	0.013
11:29	0.009
11:30	0.006
11:31	0.006
11:32	0.006
11:33	0.006
11:34	0.006
11:35	0.009
11:36	0.009
11:37	0.009
11:38	0.009
11:39	0.036
11:40	0.014
11:41	0.025
11:42	0.009
11:43	0.011
11:44	0.008
11:45	0.008
11:46	0.008
11:47	0.006
11:48	0.007
11:49	0.006
11:50	0.006
11:51	0.006
11:52	0.009
11:53	0.006
11:54	0.006
11:55	0.005
11:56	0.006

11:57	0.006
11:58	0.006
11:59	0.006
12:00	0.007
12:01	0.006
12:02	0.005
12:03	0.024
12:04	0.006
12:05	0.005
12:06	0.006
12:07	0.025
12:08	0.017
12:09	0.005
12:10	0.005
12:11	0.005
12:12	0.004
12:13	0.004
12:14	0.005
12:15	0.005
12:16	0.006
12:17	0.007
12:18	0.008
12:19	0.008
12:20	0.007
12:21	0.006
12:22	0.006
12:23	0.006
12:24	0.006
12:25	0.006
12:26	0.005
12:27	0.006
12:28	0.006
12:29	0.006
12:30	0.006
12:31	0.007
12:32	0.007
12:33	0.007
12:34	0.01
12:35	0.009
12:36	0.009
12:37	0.011
12:38	0.013
12:39	0.018
12:40	0.019
12:41	0.034
12:42	0.019
12:43	0.01

12:44	0.011
12:45	0.014
12:46	0.014
12:47	0.013
12:48	0.009
12:49	0.01
12:50	0.015
12:51	0.009
12:52	0.012
12:53	0.018
12:54	0.019
12:55	0.021
12:56	0.016
12:57	0.01
12:58	0.011
12:59	0.013
13:00	0.031
13:01	0.017
13:02	0.009
13:03	0.011
13:04	0.013
13:05	0.012
13:06	0.013
13:07	0.017
13:08	0.014
13:09	0.014
13:10	0.02
13:11	0.015
13:12	0.023
13:13	0.011
13:14	0.01
13:15	0.011
13:16	0.01
13:17	0.024
13:18	0.008
13:19	0.009
13:20	0.009
13:21	0.012
13:22	0.014
13:23	0.018
13:24	0.011
13:25	0.008
13:26	0.008
13:27	0.021
13:28	0.019
13:29	0.013
13:30	0.014

13:31	0.021
13:32	0.015
13:33	0.021
13:34	0.016
13:35	0.015
13:36	0.02
13:37	0.022
13:38	0.038
13:39	0.014
13:40	0.018
13:41	0.014
13:42	0.019
13:43	0.01
13:44	0.008
13:45	0.007
13:46	0.007
13:47	0.01
13:48	0.013
13:49	0.01
13:50	0.026
13:51	0.027
13:52	0.008
13:53	0.01
13:54	0.014
13:55	0.011
13:56	0.015
13:57	0.015
13:58	0.014
13:59	0.023
14:00	0.014
14:01	0.011
14:02	0.008
14:03	0.009
14:04	0.02
14:05	0.022
14:06	0.023
14:07	0.01
14:08	0.009
14:09	0.008
14:10	0.025
14:11	0.028
14:12	0.02
14:13	0.009
14:14	0.008
14:15	0.019
14:16	0.018
14:17	0.011



14:18	0.018
14:19	0.013
14:20	0.009
14:21	0.018
14:22	0.025
14:23	0.017
14:24	0.009
14:25	0.01
14:26	0.014
14:27	0.034
14:28	0.223
14:29	0.076
14:30	0.02
14:31	0.015
14:32	0.03
14:33	0.024
14:34	0.008
14:35	0.008
14:36	0.008
14:37	0.008
14:38	0.006
14:39	0.008
14:40	0.009
14:41	0.016
14:42	0.027
14:43	0.006
14:44	0.006
14:45	0.006
14:46	0.007
14:47	0.007
14:48	0.007
14:49	0.01
14:50	0.012
14:51	0.006
14:52	0.007
14:53	0.009
14:54	0.006
14:55	0.006
14:56	0.006
14:57	0.006
14:58	0.007
14:59	0.007
15:00	0.006
15:01	0.006
15:02	0.007
15:03	0.007
15:04	0.007

15:05	0.006
15:06	0.009
15:07	0.006
15:08	0.007
15:09	0.007
15:10	0.006
15:11	0.01
15:12	0.011
15:13	0.009
15:14	0.008
15:15	0.016
15:16	0.015
15:17	0.012
15:18	0.013
15:19	0.012
15:20	0.037
15:21	0.018
15:22	0.017
15:23	0.007
15:24	0.011
15:25	0.02
15:26	0.021
15:27	0.007
15:28	0.006
15:29	0.005
15:30	0.008
15:31	0.011
15:32	0.016
15:33	0.009
15:34	0.011
15:35	0.022
15:36	0.011
15:37	0.014
15:38	0.006
15:39	0.032
15:40	0.015
15:41	0.007
15:42	0.006
15:43	0.021
15:44	0.008
15:45	0.01
15:46	0.008
15:47	0.006
15:48	0.008
15:49	0.01
15:50	0.016
15:51	0.014

15:52	0.009
15:53	0.008
15:54	0.013
15:55	0.008
15:56	0.01
15:57	0.007
15:58	0.006
15:59	0.006
16:00	0.006
16:01	0.01
16:02	0.006
16:03	0.006
16:04	0.005
16:05	0.006
16:06	0.008
16:07	0.009
16:08	0.008
16:09	0.006
16:10	0.01
16:11	0.01
16:12	0.007
16:13	0.006
16:14	0.005
16:15	0.005
16:16	0.008
16:17	0.02
16:18	0.005
16:19	0.006
16:20	0.006
16:21	0.006
16:22	0.008
16:23	0.007
16:24	0.005
16:25	0.007
16:26	0.01
16:27	0.008
16:28	0.005
16:29	0.005
16:30	0.011
16:31	0.008
16:32	0.005
16:33	0.005
16:34	0.005
16:35	0.005
16:36	0.007
16:37	0.007
16:38	0.007

16:39	0.006
16:40	0.01
16:41	0.014
16:42	0.007
16:43	0.006
16:44	0.007
16:45	0.007
16:46	0.007
16:47	0.007
16:48	0.007
16:49	0.007
16:50	0.007
16:51	0.01
16:52	0.008
16:53	0.007
16:54	0.007
16:55	0.008
16:56	0.008
16:57	0.008
16:58	0.009
16:59	0.007
17:00	0.007
17:01	0.007
17:02	0.012
17:03	0.009
17:04	0.006
17:05	0.007
17:06	0.008
17:07	0.007
17:08	0.013
17:09	0.024
17:10	0.02
17:11	0.026
17:12	0.011
17:13	0.008
17:14	0.009
17:15	0.013
17:16	0.008
17:17	0.008
17:18	0.009
17:19	0.034
17:20	0.009
17:21	0.008
17:22	0.012
17:23	0.01
17:24	0.008
17:25	0.008

17:26	0.008
17:27	0.007
17:28	0.051
17:29	0.037
17:30	0.038
17:31	0.029
17:32	0.026
17:33	0.095
17:34	0.048
17:35	0.038
17:36	0.013
17:37	0.013
17:38	0.03
17:39	0.01
17:40	0.023
17:41	0.033
17:42	0.026
17:43	0.016
17:44	0.019
17:45	0.013
17:46	0.03























592-906020	10/8/2024 7:12 Readings	PID	SC23030396CB	Normal	0
592-906020	10/8/2024 7:11 Readings	PID	SC23030396CB	Normal	0
592-906020	10/8/2024 7:10 Readings	PID	SC23030396CB	Normal	0
592-906020	10/8/2024 7:09 Readings	PID	SC23030396CB	Normal	0
592-906020	10/8/2024 7:08 Readings	PID	SC23030396CB	Normal	0
592-906020	10/8/2024 7:07 Readings	PID	SC23030396CB	Normal	0
592-906020	10/8/2024 7:06 Readings	PID	SC23030396CB	Normal	0
592-906020	10/8/2024 7:05 Readings	PID	SC23030396CB	Normal	0
592-906020	10/8/2024 7:04 Readings	PID	SC23030396CB	Normal	0
592-906020	10/8/2024 7:03 Readings	PID	SC23030396CB	Normal	0
592-906020	10/8/2024 7:02 Readings	PID	SC23030396CB	Normal	0
592-906020	10/8/2024 7:01 Readings	PID	SC23030396CB	Normal	0
592-906020	10/8/2024 7:00 Readings	PID	SC23030396CB	Normal	0
592-906020	10/8/2024 6:59 Readings	PID	SC23030396CB	Normal	0
592-906020	10/8/2024 6:58 Readings	PID	SC23030396CB	Normal	0
592-906020	10/8/2024 6:57 Readings	PID	SC23030396CB	Normal	0
592-906020	10/8/2024 6:56 CONFIG	PID	SC23030396CB		