



DAILY STATUS REPORT

Prepared By:
Ryan Just

WEATHER	Snow	Rain	Overcast	Partly Cloudy	Bright Sun	X	Wind
TEMP.	< 32	32-50	50-70	X	70-85	>85	W – 13 mph

IEEG Project No:	13928	NYSDEC BCP Site No:	C224367	Date: 10/14/24
Project:	251 Douglass Street, Brooklyn, NY			

<p>Consultant: Impact Environmental Engineering and Geology, PLLC (IEEG)</p> <p>Time On: 06:40 Time Out: 19:00</p>	<p>Personnel On Site: IEEG (Environmental) –Ryan Just Broadway Construction Group – Shannon Dowling / Tom Caporale Cascade – John Emers WSP - Charlie Lambert GES Concrete Courses FSR</p> <p>Equipment On Site: (3) MiniRAE 3000 PID, (3) DustTrak II</p>
---	--

Scope of Work: IEEG to deploy CAMP stations according to wind direction; Cascade to continue ISS column installation; and Concrete Courses to continue with super structure and rebar work.

Site Activities:

- IEEG deployed three (3) CAMP stations prior to the start of work activities;
- IEEG applied ATMOS foam to stockpile, swell material, and site surface as needed throughout the day;
- Concrete Courses continued rebar work in the phase 2 construction area and superstructure work;
- FSR continued to install helical piles for a Con Edison vault along Douglass Street, oversight provided by GES;
- Eleven (11) truckloads of swell material were transported for offsite disposal to the Pure Soil facility;
- Cascade drilled **Column 178** with column specification below:
 - Column is 8’ diameter and drilled 36’ deep from Site grade;
 - The column consisted of a total of 19 batches;
 - A wet mix sample was collected at approximately 20’ deep from Site grade;
- Cascade drilled **Column 180** with column specification below:
 - Column is 8’ diameter and drilled 36’ deep from Site grade;
 - The column consisted of a total of 74 batches;
 - Additional passes were completed in order to use the remaining slag and Portland cement in the silos before they are relocated.

Community Air Monitoring Program (CAMP) - CAMP action level for dust (0.1 mg/m³) and VOCs (5 ppm)

- PID remained at nominal levels throughout the day
- No sustained dust exceedances were observed over a 15-min period during monitoring.
- Startup Upwind Conditions – PID = 0.1 ppm @ 06:54, Dust = 0.583 mg/m³ @ 06:49
- High Conditions (Upwind) – PID = 27.2 ppm @ 8:15, Dust = 3.25 mg/m³ @ 18:24
- High Conditions (Downwind 1) – PID = 0.0 ppm, Dust = 6.31 mg/m³ @ 11:55
- High Conditions (Downwind 2) – PID = 0.0 ppm, Dust = 1.21 mg/m³ @ 17:02

Notable Site Conditions:

- Due to strong winds, laborers were instructed to use dust suppression measures in order to mitigate dust.

Planned for the Next Day/Week:

- Cascade to stockpile swell and grade the ISS area.
- Concrete Courses to continue super structure activities.



PHOTO LOG

251 DOUGLASS STREET, BROOKLYN, NY



Photo 1-
Representative photo of ATMOS application to swell material being loaded out.



Photo 2-
Representative photo of swell truck cover securely strapped down prior to departing the Site.



Photo 3-
Representative
view of laborer
utilizing water to
suppress dust.



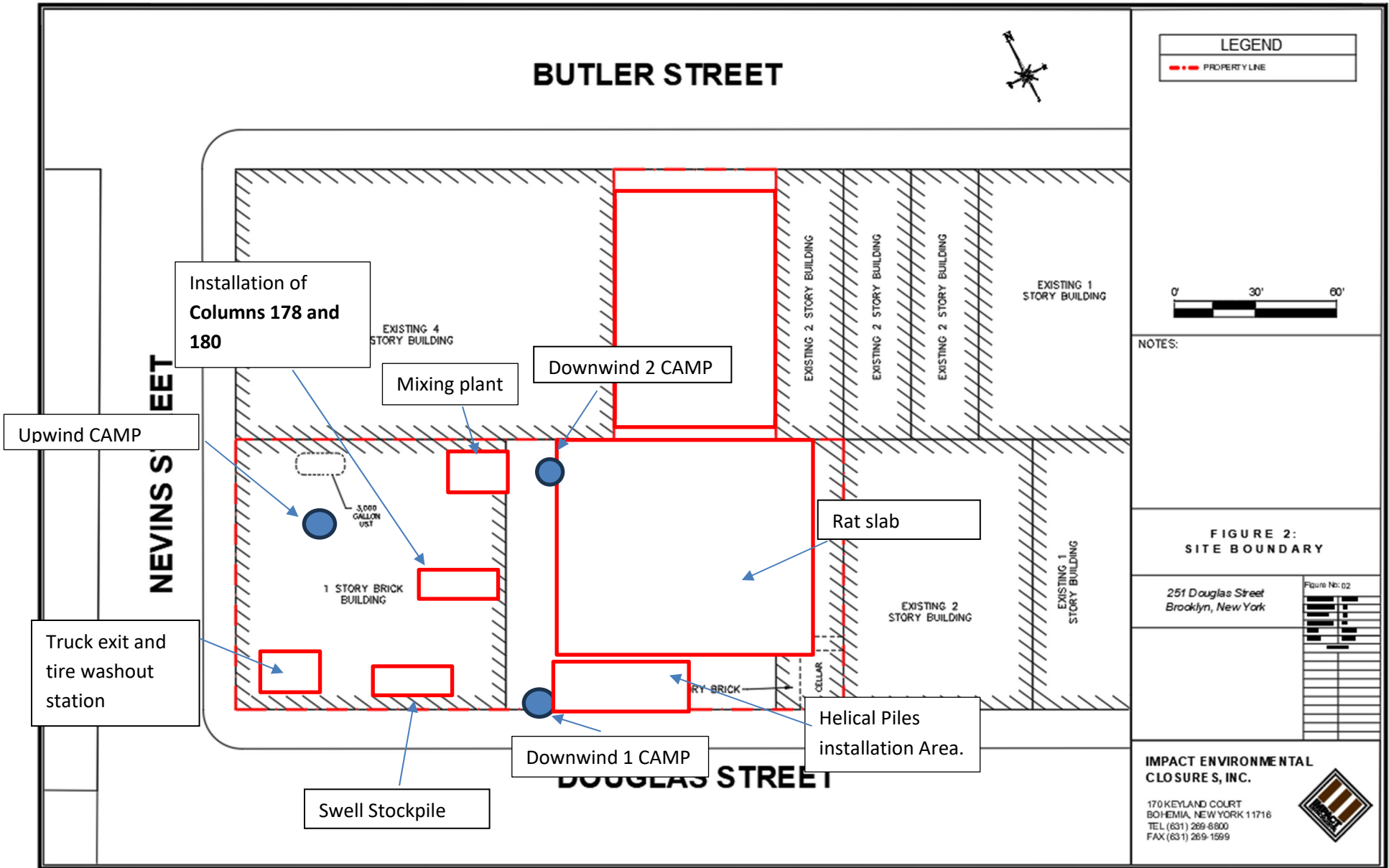
Photo 4-
Representative
photo of ATMOS
application
during ISS
column
installation.



SITE PLANS

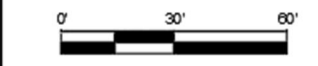
251 DOUGLASS STREET, BROOKLYN, NY





LEGEND

--- PROPERTY LINE



NOTES:

FIGURE 2: SITE BOUNDARY

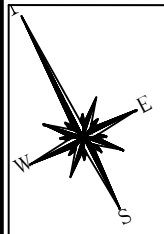
251 Douglas Street
Brooklyn, New York

Figure No: 02

IMPACT ENVIRONMENTAL CLOSURE S, INC.

170 KEYLAND COURT
BOHEMIA, NEW YORK 11716
TEL (631) 269-8800
FAX (631) 269-1599





LEGEND

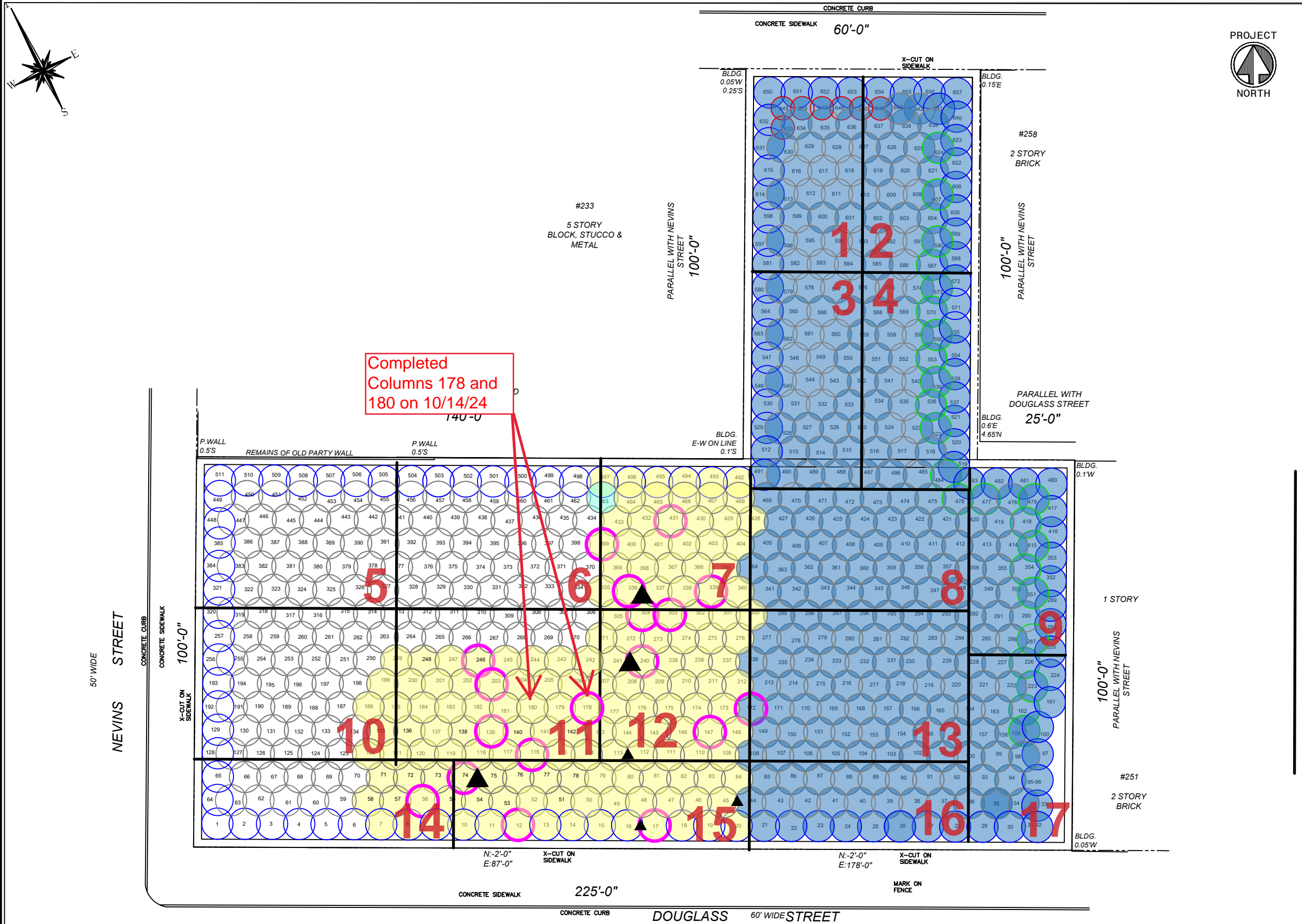
- PROPERTY LINE
- 55' EIGHT FOOT DIA. HYDRAULIC COLUMN (TYP.)
- EIGHT FOOT DIA. INNER COLUMN (TYP.)
- APPROVED TO 55'
- SIX FOOT DIA. HYDRAULIC COLUMN (TYP.)
- ISS COLUMN INSTALLED TO TERMINAL DEPTH
- ISS COLUMN UNABLE TO BE INSTALLED TO TERMINAL DEPTH
- ISS COLUMN / GRID APPROVED BY DEC
- WET MIX SAMPLE COLLECTED FROM ISS COLUMN
- ▲ COMPLETED CORING LOCATION
- ▲ PROPOSED CORING LOCATION

NOTES:
 1. THE BASE MAP WAS DRAWN FROM A PLAN ENTITLED, ALTA/NSPS LAND TITLE SURVEY, PREPARED BY PERFECT POINT LAND SURVEYING OF BROOKLYN, NY AND WAS RECEIVED ELECTRONICALLY ON APRIL 2023 WITH AN ORIGINAL SCALE: 1" = 20'.

251 Douglass Street Brooklyn, New York	PROJECT NO:	13028-01
	DESIGNED BY:	AB
	DRAWN BY:	AB
	CHECKED BY:	DP
	DATE:	10/4/2024
	SCALE:	N.T.S.
REVISIONS		

IMPACT ENVIRONMENTAL ENGINEERING & GEOLOGY PLLC.

170 KEYLAND COURT
 BOHEMIA, NEW YORK 11716
 TEL (631) 269-8800
 FAX (631) 269-1599





UPWIND CAMP READINGS

251 DOUGLASS STREET, BROOKLYN, NY

Instrument Name	DustTrak II
Model Number	8530
Serial Number	8530224603
Firmware Version	3.1
Calibration Date	4/3/2024
Test Name	MANUAL_008
Test Start Time	6:48:33 AM
Test Start Date	10/14/2024
Test Length [D:H:M]	0:11:52
Test Interval [M:S]	1:00
Mass Average [mg/m3]	0.056
Mass Minimum [mg/m3]	0.001
Mass Maximum [mg/m3]	3.25
Mass TWA [mg/m3]	0.059
Photometric User Cal	1
Flow User Cal	0
Errors	
Number of Samples	712

Elapsed Time [s]	Mass [mg/m3]	Alarms	Errors
6:49	0.583		
6:50	0.126		
6:51	0.147		
6:52	0.217		
6:53	0.172		
6:54	0.254		
6:55	0.248		
6:56	0.2		
6:57	0.184		
6:58	0.097		
6:59	0.057		
7:00	0.038		
7:01	0.065		
7:02	0.066		
7:03	0.049		
7:04	0.044		
7:05	0.06		
7:06	0.128		
7:07	0.1		
7:08	0.083		
7:09	0.052		
7:10	0.141		
7:11	0.18		
7:12	0.119		
7:13	0.056		
7:14	0.066		
7:15	0.207		

7:16	0.052
7:17	0.06
7:18	0.074
7:19	0.058
7:20	0.049
7:21	0.105
7:22	0.08
7:23	0.061
7:24	0.13
7:25	0.139
7:26	0.18
7:27	0.195
7:28	0.275
7:29	0.098
7:30	0.079
7:31	0.063
7:32	0.049
7:33	0.05
7:34	0.041
7:35	0.041
7:36	0.044
7:37	0.049
7:38	0.046
7:39	0.044
7:40	0.044
7:41	0.05
7:42	0.058
7:43	0.059
7:44	0.054
7:45	0.048
7:46	0.043
7:47	0.048
7:48	0.055
7:49	0.045
7:50	0.041
7:51	0.042
7:52	0.068
7:53	0.049
7:54	0.052
7:55	0.062
7:56	0.072
7:57	0.115
7:58	0.047
7:59	0.073
8:00	0.075
8:01	0.077
8:02	0.078

8:03	0.056
8:04	0.071
8:05	0.052
8:06	0.046
8:07	0.059
8:08	0.061
8:09	0.055
8:10	0.053
8:11	0.065
8:12	0.053
8:13	0.049
8:14	0.048
8:15	0.053
8:16	0.057
8:17	0.071
8:18	0.049
8:19	0.063
8:20	0.048
8:21	0.057
8:22	0.061
8:23	0.057
8:24	0.064
8:25	0.09
8:26	0.096
8:27	0.066
8:28	0.086
8:29	0.104
8:30	0.093
8:31	0.066
8:32	0.081
8:33	0.079
8:34	0.119
8:35	0.089
8:36	0.102
8:37	0.103
8:38	0.072
8:39	0.097
8:40	0.066
8:41	0.066
8:42	0.059
8:43	0.074
8:44	0.075
8:45	0.089
8:46	0.074
8:47	0.065
8:48	0.057
8:49	0.079

8:50	0.068
8:51	0.057
8:52	0.068
8:53	0.052
8:54	0.05
8:55	0.05
8:56	0.051
8:57	0.053
8:58	0.051
8:59	0.065
9:00	0.063
9:01	0.061
9:02	0.05
9:03	0.055
9:04	0.049
9:05	0.106
9:06	0.072
9:07	0.053
9:08	0.049
9:09	0.05
9:10	0.055
9:11	0.056
9:12	0.07
9:13	0.054
9:14	0.056
9:15	0.058
9:16	0.059
9:17	0.079
9:18	0.063
9:19	0.055
9:20	0.063
9:21	0.064
9:22	0.068
9:23	0.073
9:24	0.074
9:25	0.073
9:26	0.065
9:27	0.066
9:28	0.056
9:29	0.055
9:30	0.057
9:31	0.054
9:32	0.054
9:33	0.053
9:34	0.052
9:35	0.051
9:36	0.054

9:37	0.053
9:38	0.051
9:39	0.053
9:40	0.055
9:41	0.083
9:42	0.064
9:43	0.075
9:44	0.083
9:45	0.089
9:46	0.053
9:47	0.057
9:48	0.053
9:49	0.051
9:50	0.05
9:51	0.051
9:52	0.049
9:53	0.049
9:54	0.049
9:55	0.052
9:56	0.064
9:57	0.055
9:58	0.052
9:59	0.06
10:00	0.049
10:01	0.051
10:02	0.059
10:03	0.061
10:04	0.053
10:05	0.049
10:06	0.049
10:07	0.051
10:08	0.05
10:09	0.049
10:10	0.047
10:11	0.068
10:12	0.102
10:13	0.052
10:14	0.05
10:15	0.049
10:16	0.048
10:17	0.047
10:18	0.045
10:19	0.045
10:20	0.044
10:21	0.044
10:22	0.043
10:23	0.042

10:24	0.044
10:25	0.043
10:26	0.043
10:27	0.043
10:28	0.049
10:29	0.042
10:30	0.041
10:31	0.046
10:32	0.042
10:33	0.041
10:34	0.041
10:35	0.042
10:36	0.041
10:37	0.051
10:38	0.042
10:39	0.051
10:40	0.046
10:41	0.045
10:42	0.046
10:43	0.044
10:44	0.044
10:45	0.045
10:46	0.045
10:47	0.044
10:48	0.044
10:49	0.044
10:50	0.045
10:51	0.044
10:52	0.069
10:53	0.041
10:54	0.042
10:55	0.04
10:56	0.039
10:57	0.04
10:58	0.041
10:59	0.041
11:00	0.041
11:01	0.04
11:02	0.042
11:03	0.043
11:04	0.041
11:05	0.043
11:06	0.045
11:07	0.045
11:08	0.044
11:09	0.042
11:10	0.042

11:11	0.043
11:12	0.044
11:13	0.042
11:14	0.047
11:15	0.046
11:16	0.057
11:17	0.045
11:18	0.044
11:19	0.044
11:20	0.045
11:21	0.05
11:22	0.045
11:23	0.045
11:24	0.048
11:25	0.045
11:26	0.046
11:27	0.043
11:28	0.043
11:29	0.043
11:30	0.043
11:31	0.042
11:32	0.045
11:33	0.049
11:34	0.045
11:35	0.049
11:36	0.042
11:37	0.042
11:38	0.039
11:39	0.036
11:40	0.037
11:41	0.056
11:42	0.036
11:43	0.038
11:44	0.049
11:45	0.039
11:46	0.065
11:47	0.772
11:48	0.262
11:49	0.951
11:50	0.175
11:51	0.059
11:52	0.042
11:53	0.091
11:54	0.073
11:55	0.132
11:56	0.124
11:57	0.411

11:58	0.059
11:59	0.066
12:00	0.021
12:01	0.023
12:02	0.037
12:03	0.018
12:04	0.036
12:05	0.024
12:06	0.018
12:07	0.04
12:08	0.061
12:09	0.02
12:10	0.023
12:11	0.057
12:12	0.02
12:13	0.015
12:14	0.085
12:15	0.033
12:16	0.021
12:17	0.104
12:18	0.054
12:19	0.018
12:20	0.032
12:21	0.019
12:22	0.035
12:23	0.024
12:24	0.047
12:25	0.018
12:26	0.022
12:27	0.069
12:28	0.037
12:29	0.029
12:30	0.014
12:31	0.024
12:32	0.259
12:33	0.08
12:34	0.025
12:35	0.145
12:36	0.044
12:37	0.091
12:38	0.024
12:39	0.018
12:40	0.016
12:41	0.011
12:42	0.02
12:43	0.029
12:44	0.014

12:45	0.017
12:46	0.018
12:47	0.016
12:48	0.019
12:49	0.043
12:50	0.015
12:51	0.017
12:52	0.012
12:53	0.02
12:54	0.015
12:55	0.034
12:56	0.068
12:57	0.063
12:58	0.022
12:59	0.015
13:00	0.012
13:01	0.022
13:02	0.01
13:03	0.017
13:04	0.011
13:05	0.012
13:06	0.024
13:07	0.018
13:08	0.048
13:09	0.015
13:10	0.01
13:11	0.029
13:12	0.019
13:13	0.041
13:14	0.019
13:15	0.024
13:16	0.015
13:17	0.01
13:18	0.011
13:19	0.021
13:20	0.021
13:21	0.011
13:22	0.015
13:23	0.011
13:24	0.01
13:25	0.011
13:26	0.012
13:27	0.011
13:28	0.012
13:29	0.014
13:30	0.013
13:31	0.068

13:32	0.024
13:33	0.021
13:34	0.024
13:35	0.019
13:36	0.015
13:37	0.026
13:38	0.025
13:39	0.028
13:40	0.031
13:41	0.018
13:42	0.041
13:43	0.027
13:44	0.022
13:45	0.016
13:46	0.089
13:47	0.084
13:48	0.017
13:49	0.018
13:50	0.015
13:51	0.014
13:52	0.019
13:53	0.011
13:54	0.012
13:55	0.033
13:56	0.013
13:57	0.023
13:58	0.016
13:59	0.013
14:00	0.029
14:01	0.342
14:02	0.058
14:03	0.016
14:04	0.016
14:05	0.015
14:06	0.045
14:07	0.232
14:08	0.095
14:09	0.022
14:10	0.014
14:11	0.023
14:12	0.014
14:13	0.01
14:14	0.011
14:15	0.011
14:16	0.012
14:17	0.013
14:18	0.095

14:19	0.031
14:20	0.022
14:21	0.018
14:22	0.04
14:23	0.028
14:24	0.015
14:25	0.079
14:26	0.045
14:27	0.023
14:28	0.014
14:29	0.01
14:30	0.011
14:31	0.012
14:32	0.011
14:33	0.01
14:34	0.034
14:35	0.031
14:36	0.026
14:37	0.014
14:38	0.032
14:39	0.031
14:40	0.024
14:41	0.012
14:42	0.015
14:43	0.015
14:44	0.01
14:45	0.01
14:46	0.011
14:47	0.032
14:48	0.018
14:49	0.026
14:50	0.098
14:51	0.029
14:52	0.013
14:53	0.015
14:54	0.02
14:55	0.016
14:56	0.026
14:57	0.016
14:58	0.017
14:59	0.141
15:00	0.072
15:01	0.016
15:02	0.011
15:03	0.023
15:04	0.029
15:05	0.07

15:06	0.026
15:07	0.089
15:08	0.018
15:09	0.019
15:10	0.026
15:11	0.015
15:12	0.011
15:13	0.019
15:14	0.013
15:15	0.011
15:16	0.059
15:17	0.021
15:18	0.013
15:19	0.009
15:20	0.021
15:21	0.012
15:22	0.009
15:23	0.033
15:24	0.01
15:25	0.016
15:26	0.013
15:27	0.023
15:28	0.013
15:29	0.01
15:30	0.029
15:31	0.022
15:32	0.029
15:33	0.015
15:34	0.066
15:35	0.018
15:36	0.02
15:37	0.02
15:38	0.078
15:39	0.032
15:40	0.009
15:41	0.01
15:42	0.018
15:43	0.008
15:44	0.012
15:45	0.005
15:46	0.025
15:47	0.01
15:48	0.131
15:49	0.041
15:50	0.013
15:51	0.021
15:52	0.033

15:53	0.033
15:54	0.037
15:55	0.042
15:56	0.026
15:57	0.013
15:58	0.211
15:59	0.196
16:00	0.085
16:01	0.014
16:02	0.014
16:03	0.031
16:04	0.01
16:05	0.044
16:06	0.028
16:07	0.132
16:08	0.324
16:09	0.071
16:10	0.037
16:11	0.021
16:12	0.045
16:13	0.019
16:14	0.028
16:15	0.012
16:16	0.019
16:17	0.017
16:18	0.007
16:19	0.007
16:20	0.012
16:21	0.009
16:22	0.024
16:23	0.007
16:24	0.041
16:25	0.009
16:26	0.01
16:27	0.009
16:28	0.021
16:29	0.009
16:30	0.009
16:31	0.013
16:32	0.053
16:33	0.024
16:34	0.027
16:35	0.013
16:36	0.004
16:37	0.011
16:38	0.004
16:39	0.039

16:40	0.04
16:41	0.006
16:42	0.007
16:43	0.014
16:44	0.013
16:45	0.005
16:46	0.011
16:47	0.005
16:48	0.003
16:49	0.006
16:50	0.004
16:51	0.006
16:52	0.007
16:53	0.018
16:54	0.014
16:55	0.013
16:56	0.009
16:57	0.016
16:58	0.013
16:59	0.014
17:00	0.004
17:01	0.032
17:02	0.242
17:03	0.014
17:04	0.024
17:05	0.302
17:06	0.052
17:07	0.024
17:08	0.035
17:09	0.017
17:10	0.015
17:11	0.13
17:12	0.045
17:13	0.011
17:14	0.009
17:15	0.012
17:16	0.019
17:17	0.135
17:18	0.021
17:19	0.091
17:20	0.023
17:21	0.01
17:22	0.031
17:23	0.102
17:24	0.007
17:25	0.008
17:26	0.028

17:27	0.01
17:28	0.003
17:29	0.007
17:30	0.086
17:31	0.006
17:32	0.006
17:33	0.002
17:34	0.003
17:35	0.002
17:36	0.008
17:37	0.004
17:38	0.028
17:39	0.004
17:40	0.008
17:41	0.093
17:42	0.003
17:43	0.003
17:44	0.007
17:45	0.005
17:46	0.004
17:47	0.016
17:48	0.007
17:49	0.002
17:50	0.005
17:51	0.002
17:52	0.013
17:53	0.01
17:54	0.002
17:55	0.002
17:56	0.03
17:57	0.002
17:58	0.001
17:59	0.002
18:00	0.007
18:01	0.005
18:02	0.116
18:03	0.004
18:04	0.017
18:05	0.006
18:06	0.011
18:07	0.005
18:08	0.013
18:09	0.162
18:10	0.007
18:11	0.015
18:12	0.006
18:13	0.005

18:14	0.007
18:15	0.005
18:16	0.01
18:17	0.008
18:18	0.004
18:19	0.004
18:20	0.005
18:21	0.002
18:22	0.002
18:23	0.632
18:24	3.25
18:25	0.282
18:26	0.221
18:27	0.083
18:28	0.037
18:29	0.077
18:30	0.19
18:31	0.227
18:32	0.072
18:33	0.175
18:34	0.089
18:35	0.052
18:36	0.069
18:37	0.095
18:38	0.119
18:39	0.12
18:40	0.11

592-927198	10/14/2024 18:47 Readings	PID	SC23030235W3	Normal	0
592-927198	10/14/2024 18:48 Readings	PID	SC23030235W3	Normal	0
592-927198	10/14/2024 18:49 Readings	PID	SC23030235W3	Normal	0
592-927198	10/14/2024 18:50 Readings	PID	SC23030235W3	Normal	0
592-927198	10/14/2024 18:51 Readings	PID	SC23030235W3	Normal	0
592-927198	10/14/2024 18:52 Readings	PID	SC23030235W3	Normal	0
592-927198	10/14/2024 18:53 Readings	PID	SC23030235W3	Normal	0
592-927198	10/14/2024 18:54 Readings	PID	SC23030235W3	Normal	0
592-927198	10/14/2024 18:55 Readings	PID	SC23030235W3	Normal	0
592-927198	10/14/2024 18:56 Readings	PID	SC23030235W3	Normal	0
592-927198	10/14/2024 18:57 Readings	PID	SC23030235W3	Normal	0

DOWNWIND CAMP READINGS

251 DOUGLASS STREET, BROOKLYN, NY



Instrument Name	DustTrak DRX
Model Number	8533
Serial Number	8533181207
Firmware Version	3.1
Calibration Date	7/11/2024
Test Name	MANUAL_008
Test Start Time	6:52:50 AM
Test Start Date	10/14/2024
Test Length [D:H:M]	0:11:37
Test Interval [M:S]	1:00
PM10 Average [mg/m3]	0.068
PM10 Minimum [mg/m3]	0.003
PM10 Maximum [mg/m3]	6.31
PM10 TWA [mg/m3]	0.076
Photometric User Cal	1
Size Correction User Cal	1
Flow User Cal	0
Errors	
Number of Samples	697

Elapsed Time [s]	PM10 [mg/m3]	Alarms	Errors
6:53	0.25		
6:54	0.048		
6:55	0.05		
6:56	0.063		
6:57	0.118		
6:58	0.039		
6:59	0.035		
7:00	0.054		
7:01	0.036		
7:02	0.051		
7:03	0.105		
7:04	0.06		
7:05	0.033		
7:06	0.071		
7:07	0.057		
7:08	0.078		
7:09	0.068		
7:10	0.082		
7:11	0.08		
7:12	0.068		
7:13	0.042		
7:14	0.037		
7:15	0.032		
7:16	0.037		
7:17	0.034		
7:18	0.033		

7:19	0.034
7:20	0.034
7:21	0.034
7:22	0.035
7:23	0.034
7:24	0.035
7:25	0.045
7:26	0.038
7:27	0.037
7:28	0.047
7:29	0.058
7:30	0.041
7:31	0.039
7:32	0.037
7:33	0.035
7:34	0.036
7:35	0.067
7:36	0.115
7:37	0.043
7:38	0.039
7:39	0.116
7:40	0.076
7:41	0.067
7:42	0.046
7:43	0.052
7:44	0.04
7:45	0.07
7:46	0.048
7:47	0.046
7:48	0.037
7:49	0.053
7:50	0.047
7:51	0.036
7:52	0.051
7:53	0.118
7:54	0.254
7:55	0.136
7:56	0.042
7:57	0.035
7:58	0.113
7:59	0.04
8:00	0.12
8:01	0.137
8:02	0.097
8:03	0.046
8:04	0.036
8:05	0.04

8:06	0.045
8:07	0.051
8:08	0.041
8:09	0.037
8:10	0.045
8:11	0.04
8:12	0.037
8:13	0.048
8:14	0.096
8:15	0.066
8:16	0.047
8:17	0.054
8:18	0.148
8:19	0.053
8:20	0.044
8:21	0.04
8:22	0.041
8:23	0.103
8:24	0.055
8:25	0.04
8:26	0.039
8:27	0.038
8:28	0.041
8:29	0.046
8:30	0.043
8:31	0.049
8:32	0.064
8:33	0.073
8:34	0.056
8:35	0.087
8:36	0.092
8:37	0.09
8:38	0.103
8:39	0.08
8:40	0.149
8:41	0.066
8:42	0.065
8:43	0.047
8:44	0.061
8:45	0.054
8:46	0.06
8:47	0.056
8:48	0.043
8:49	0.047
8:50	0.058
8:51	0.072
8:52	0.222

8:53	0.075
8:54	0.054
8:55	0.064
8:56	0.055
8:57	0.044
8:58	0.049
8:59	0.055
9:00	0.068
9:01	0.045
9:02	0.041
9:03	0.04
9:04	0.042
9:05	0.05
9:06	0.079
9:07	0.096
9:08	0.053
9:09	0.043
9:10	0.048
9:11	0.048
9:12	0.042
9:13	0.04
9:14	0.053
9:15	0.047
9:16	0.049
9:17	0.091
9:18	0.055
9:19	0.073
9:20	0.048
9:21	0.06
9:22	0.042
9:23	0.049
9:24	0.043
9:25	0.046
9:26	0.042
9:27	0.043
9:28	0.055
9:29	0.045
9:30	0.047
9:31	0.043
9:32	0.045
9:33	0.044
9:34	0.045
9:35	0.046
9:36	0.046
9:37	0.047
9:38	0.046
9:39	0.044

9:40	0.045
9:41	0.046
9:42	0.048
9:43	0.045
9:44	0.062
9:45	0.061
9:46	0.062
9:47	0.043
9:48	0.041
9:49	0.045
9:50	0.046
9:51	0.046
9:52	0.044
9:53	0.041
9:54	0.04
9:55	0.045
9:56	0.041
9:57	0.04
9:58	0.041
9:59	0.05
10:00	0.045
10:01	0.041
10:02	0.08
10:03	0.045
10:04	0.057
10:05	0.045
10:06	0.05
10:07	0.056
10:08	0.039
10:09	0.051
10:10	0.045
10:11	0.08
10:12	0.076
10:13	0.057
10:14	0.048
10:15	0.042
10:16	0.04
10:17	0.035
10:18	0.035
10:19	0.043
10:20	0.043
10:21	0.034
10:22	0.034
10:23	0.033
10:24	0.034
10:25	0.033
10:26	0.034

10:27	0.035
10:28	0.033
10:29	0.033
10:30	0.033
10:31	0.082
10:32	0.044
10:33	0.034
10:34	0.032
10:35	0.033
10:36	0.178
10:37	0.033
10:38	0.034
10:39	0.037
10:40	0.034
10:41	0.035
10:42	0.036
10:43	0.036
10:44	0.046
10:45	0.043
10:46	0.035
10:47	0.035
10:48	0.035
10:49	0.035
10:50	0.036
10:51	0.036
10:52	0.034
10:53	0.041
10:54	0.042
10:55	0.034
10:56	0.03
10:57	0.032
10:58	0.03
10:59	0.031
11:00	0.032
11:01	0.035
11:02	0.044
11:03	0.039
11:04	0.048
11:05	0.068
11:06	0.045
11:07	0.045
11:08	0.037
11:09	0.034
11:10	0.034
11:11	0.035
11:12	0.038
11:13	0.034

11:14	0.034
11:15	0.034
11:16	0.033
11:17	0.046
11:18	0.039
11:19	0.038
11:20	0.04
11:21	0.042
11:22	0.042
11:23	0.04
11:24	0.041
11:25	0.04
11:26	0.038
11:27	0.035
11:28	0.049
11:29	0.036
11:30	0.047
11:31	0.035
11:32	0.037
11:33	0.038
11:34	0.039
11:35	0.038
11:36	0.049
11:37	0.08
11:38	0.04
11:39	0.033
11:40	0.037
11:41	0.072
11:42	0.029
11:43	0.045
11:44	0.053
11:45	0.029
11:46	0.048
11:47	1.25
11:48	0.104
11:49	0.147
11:50	0.144
11:51	0.049
11:52	0.487
11:53	0.232
11:54	0.131
11:55	6.31
11:56	0.545
11:57	0.442
11:58	0.065
11:59	0.11
12:00	0.177

12:01	0.161
12:02	0.045
12:03	0.28
12:04	0.086
12:05	0.444
12:06	0.024
12:07	0.199
12:08	0.048
12:09	0.023
12:10	0.037
12:11	0.043
12:12	0.054
12:13	0.073
12:14	0.129
12:15	0.048
12:16	0.03
12:17	0.081
12:18	0.075
12:19	0.019
12:20	0.022
12:21	0.09
12:22	0.233
12:23	0.07
12:24	0.129
12:25	0.248
12:26	0.308
12:27	0.27
12:28	0.066
12:29	0.059
12:30	0.053
12:31	0.235
12:32	0.171
12:33	0.108
12:34	0.024
12:35	0.199
12:36	0.121
12:37	0.228
12:38	0.028
12:39	0.034
12:40	0.058
12:41	0.08
12:42	0.159
12:43	0.026
12:44	0.036
12:45	0.027
12:46	0.083
12:47	0.097

12:48	0.02
12:49	0.043
12:50	0.044
12:51	0.015
12:52	0.009
12:53	0.156
12:54	0.033
12:55	0.31
12:56	0.059
12:57	0.056
12:58	0.042
12:59	0.019
13:00	0.115
13:01	0.028
13:02	0.025
13:03	0.021
13:04	0.015
13:05	0.025
13:06	0.063
13:07	0.013
13:08	0.031
13:09	0.042
13:10	0.018
13:11	0.019
13:12	0.215
13:13	0.038
13:14	0.044
13:15	0.067
13:16	0.015
13:17	0.01
13:18	0.01
13:19	0.039
13:20	0.023
13:21	0.057
13:22	0.035
13:23	0.019
13:24	0.022
13:25	0.03
13:26	0.014
13:27	0.01
13:28	0.023
13:29	0.017
13:30	0.019
13:31	0.072
13:32	0.018
13:33	0.038
13:34	0.026

13:35	0.014
13:36	0.174
13:37	0.066
13:38	0.054
13:39	0.029
13:40	0.025
13:41	0.035
13:42	0.09
13:43	0.024
13:44	0.026
13:45	0.027
13:46	0.083
13:47	0.051
13:48	0.018
13:49	0.025
13:50	0.015
13:51	0.045
13:52	0.034
13:53	0.061
13:54	0.022
13:55	0.027
13:56	0.013
13:57	0.088
13:58	0.025
13:59	0.118
14:00	0.044
14:01	0.359
14:02	0.044
14:03	0.037
14:04	0.021
14:05	0.033
14:06	0.166
14:07	0.33
14:08	0.089
14:09	0.026
14:10	0.043
14:11	0.021
14:12	0.014
14:13	0.019
14:14	0.018
14:15	0.05
14:16	0.026
14:17	0.095
14:18	0.067
14:19	0.049
14:20	0.031
14:21	0.026

14:22	0.026
14:23	0.046
14:24	0.036
14:25	0.084
14:26	0.025
14:27	0.053
14:28	0.011
14:29	0.011
14:30	0.011
14:31	0.009
14:32	0.009
14:33	0.008
14:34	0.061
14:35	0.063
14:36	0.05
14:37	0.013
14:38	0.02
14:39	0.028
14:40	0.02
14:41	0.013
14:42	0.072
14:43	0.017
14:44	0.013
14:45	0.013
14:46	0.011
14:47	0.07
14:48	0.041
14:49	0.021
14:50	0.033
14:51	0.025
14:52	0.02
14:53	0.015
14:54	0.02
14:55	0.04
14:56	0.043
14:57	0.015
14:58	0.018
14:59	0.177
15:00	0.034
15:01	0.021
15:02	0.041
15:03	0.14
15:04	0.599
15:05	0.112
15:06	0.265
15:07	0.074
15:08	0.044

15:09	0.04
15:10	0.024
15:11	0.033
15:12	0.021
15:13	0.026
15:14	0.024
15:15	0.012
15:16	0.236
15:17	0.048
15:18	0.027
15:19	0.054
15:20	0.014
15:21	0.035
15:22	0.032
15:23	0.02
15:24	0.225
15:25	0.173
15:26	0.038
15:27	0.044
15:28	0.011
15:29	0.011
15:30	0.074
15:31	0.04
15:32	0.044
15:33	0.025
15:34	0.035
15:35	0.014
15:36	0.017
15:37	0.02
15:38	0.176
15:39	0.067
15:40	0.03
15:41	0.029
15:42	0.016
15:43	0.03
15:44	0.018
15:45	0.031
15:46	0.044
15:47	0.066
15:48	0.14
15:49	0.034
15:50	0.027
15:51	0.02
15:52	0.093
15:53	0.055
15:54	0.184
15:55	0.054

15:56	0.029
15:57	0.115
15:58	0.297
15:59	0.519
16:00	0.525
16:01	0.136
16:02	0.031
16:03	0.052
16:04	0.034
16:05	0.196
16:06	0.128
16:07	0.16
16:08	0.143
16:09	0.042
16:10	0.02
16:11	0.108
16:12	0.046
16:13	0.031
16:14	0.031
16:15	0.025
16:16	0.15
16:17	0.061
16:18	0.016
16:19	0.023
16:20	0.014
16:21	0.049
16:22	0.038
16:23	0.013
16:24	0.036
16:25	0.014
16:26	0.031
16:27	0.02
16:28	0.032
16:29	0.011
16:30	0.013
16:31	0.073
16:32	0.027
16:33	0.032
16:34	0.022
16:35	0.009
16:36	0.01
16:37	0.016
16:38	0.035
16:39	0.057
16:40	0.016
16:41	0.009
16:42	0.012

16:43	0.018
16:44	0.016
16:45	0.009
16:46	0.02
16:47	0.007
16:48	0.009
16:49	0.016
16:50	0.038
16:51	0.045
16:52	0.008
16:53	0.02
16:54	0.025
16:55	0.017
16:56	0.024
16:57	0.017
16:58	0.023
16:59	0.025
17:00	0.02
17:01	0.131
17:02	0.072
17:03	0.096
17:04	0.09
17:05	0.303
17:06	0.11
17:07	0.086
17:08	0.051
17:09	0.031
17:10	0.046
17:11	0.034
17:12	0.028
17:13	0.022
17:14	0.037
17:15	0.021
17:16	0.054
17:17	0.09
17:18	0.046
17:19	0.051
17:20	0.024
17:21	0.024
17:22	0.036
17:23	0.046
17:24	0.02
17:25	0.021
17:26	0.027
17:27	0.026
17:28	0.009
17:29	0.026

17:30	0.039
17:31	0.007
17:32	0.007
17:33	0.005
17:34	0.007
17:35	0.006
17:36	0.01
17:37	0.008
17:38	0.063
17:39	0.008
17:40	0.093
17:41	0.018
17:42	0.008
17:43	0.014
17:44	0.055
17:45	0.016
17:46	0.014
17:47	0.026
17:48	0.009
17:49	0.006
17:50	0.012
17:51	0.011
17:52	0.017
17:53	0.019
17:54	0.003
17:55	0.004
17:56	0.007
17:57	0.004
17:58	0.006
17:59	0.007
18:00	0.004
18:01	0.013
18:02	0.047
18:03	0.008
18:04	0.016
18:05	0.008
18:06	0.011
18:07	0.015
18:08	0.032
18:09	0.066
18:10	0.011
18:11	0.041
18:12	0.012
18:13	0.01
18:14	0.021
18:15	0.017
18:16	0.013

18:17	0.011
18:18	0.008
18:19	0.033
18:20	0.019
18:21	0.011
18:22	0.005
18:23	0.01
18:24	0.011
18:25	0.008
18:26	0.049
18:27	0.032
18:28	0.01
18:29	0.039

Instrument Name	DustTrak II
Model Number	8530
Serial Number	8530154916
Firmware Version	3.1
Calibration Date	8/2/2024
Test Name	MANUAL_008
Test Start Time	6:46:02 AM
Test Start Date	10/14/2024
Test Length [D:H:M]	0:11:51
Test Interval [M:S]	1:00
Mass Average [mg/m3]	0.044
Mass Minimum [mg/m3]	0.003
Mass Maximum [mg/m3]	1.21
Mass TWA [mg/m3]	0.048
Photometric User Cal	1
Flow User Cal	0
Errors	
Number of Samples	711

Elapsed Time [s]	Mass [mg/m3]	Alarms	Errors
6:47	0.126		
6:48	0.042		
6:49	0.04		
6:50	0.037		
6:51	0.04		
6:52	0.037		
6:53	0.036		
6:54	0.038		
6:55	0.037		
6:56	0.036		
6:57	0.036		
6:58	0.035		
6:59	0.035		
7:00	0.036		
7:01	0.035		
7:02	0.037		
7:03	0.035		
7:04	0.037		
7:05	0.035		
7:06	0.036		
7:07	0.035		
7:08	0.037		
7:09	0.037		
7:10	0.036		
7:11	0.035		
7:12	0.037		
7:13	0.039		

7:14	0.041
7:15	0.04
7:16	0.04
7:17	0.042
7:18	0.044
7:19	0.041
7:20	0.043
7:21	0.049
7:22	0.04
7:23	0.04
7:24	0.04
7:25	0.043
7:26	0.042
7:27	0.049
7:28	0.045
7:29	0.051
7:30	0.052
7:31	0.045
7:32	0.045
7:33	0.067
7:34	0.067
7:35	0.044
7:36	0.048
7:37	0.04
7:38	0.053
7:39	0.062
7:40	0.052
7:41	0.049
7:42	0.042
7:43	0.044
7:44	0.043
7:45	0.057
7:46	0.044
7:47	0.042
7:48	0.126
7:49	0.071
7:50	0.055
7:51	0.108
7:52	0.156
7:53	0.071
7:54	0.056
7:55	0.079
7:56	0.073
7:57	0.056
7:58	0.046
7:59	0.048
8:00	0.048

8:01	0.045
8:02	0.043
8:03	0.049
8:04	0.057
8:05	0.049
8:06	0.046
8:07	0.046
8:08	0.043
8:09	0.082
8:10	0.149
8:11	0.487
8:12	0.172
8:13	0.08
8:14	0.073
8:15	0.067
8:16	0.046
8:17	0.051
8:18	0.057
8:19	0.062
8:20	0.064
8:21	0.111
8:22	0.107
8:23	0.07
8:24	0.079
8:25	0.071
8:26	0.108
8:27	0.065
8:28	0.082
8:29	0.071
8:30	0.087
8:31	0.07
8:32	0.105
8:33	0.119
8:34	0.094
8:35	0.113
8:36	0.116
8:37	0.153
8:38	0.105
8:39	0.111
8:40	0.088
8:41	0.074
8:42	0.057
8:43	0.058
8:44	0.059
8:45	0.064
8:46	0.091
8:47	0.083

8:48	0.051
8:49	0.052
8:50	0.049
8:51	0.047
8:52	0.049
8:53	0.054
8:54	0.051
8:55	0.05
8:56	0.05
8:57	0.05
8:58	0.061
8:59	0.049
9:00	0.05
9:01	0.049
9:02	0.048
9:03	0.048
9:04	0.049
9:05	0.048
9:06	0.049
9:07	0.052
9:08	0.05
9:09	0.05
9:10	0.05
9:11	0.057
9:12	0.056
9:13	0.052
9:14	0.053
9:15	0.054
9:16	0.056
9:17	0.055
9:18	0.055
9:19	0.053
9:20	0.052
9:21	0.057
9:22	0.055
9:23	0.063
9:24	0.055
9:25	0.068
9:26	0.065
9:27	0.062
9:28	0.06
9:29	0.054
9:30	0.056
9:31	0.054
9:32	0.052
9:33	0.055
9:34	0.054

9:35	0.055
9:36	0.055
9:37	0.078
9:38	0.053
9:39	0.052
9:40	0.051
9:41	0.06
9:42	0.074
9:43	0.073
9:44	0.076
9:45	0.088
9:46	0.08
9:47	0.053
9:48	0.052
9:49	0.052
9:50	0.05
9:51	0.057
9:52	0.05
9:53	0.049
9:54	0.05
9:55	0.049
9:56	0.054
9:57	0.057
9:58	0.053
9:59	0.054
10:00	0.055
10:01	0.053
10:02	0.054
10:03	0.055
10:04	0.049
10:05	0.049
10:06	0.05
10:07	0.049
10:08	0.053
10:09	0.049
10:10	0.049
10:11	0.061
10:12	0.113
10:13	0.073
10:14	0.053
10:15	0.05
10:16	0.051
10:17	0.051
10:18	0.049
10:19	0.044
10:20	0.044
10:21	0.046

10:22	0.045
10:23	0.043
10:24	0.042
10:25	0.043
10:26	0.043
10:27	0.043
10:28	0.042
10:29	0.041
10:30	0.042
10:31	0.041
10:32	0.042
10:33	0.04
10:34	0.04
10:35	0.041
10:36	0.041
10:37	0.04
10:38	0.041
10:39	0.042
10:40	0.042
10:41	0.056
10:42	0.054
10:43	0.053
10:44	0.047
10:45	0.044
10:46	0.044
10:47	0.044
10:48	0.043
10:49	0.042
10:50	0.044
10:51	0.044
10:52	0.045
10:53	0.04
10:54	0.04
10:55	0.04
10:56	0.039
10:57	0.038
10:58	0.04
10:59	0.039
11:00	0.041
11:01	0.042
11:02	0.038
11:03	0.049
11:04	0.042
11:05	0.044
11:06	0.047
11:07	0.044
11:08	0.043

11:09	0.041
11:10	0.042
11:11	0.042
11:12	0.042
11:13	0.043
11:14	0.046
11:15	0.052
11:16	0.045
11:17	0.044
11:18	0.043
11:19	0.043
11:20	0.044
11:21	0.046
11:22	0.045
11:23	0.044
11:24	0.043
11:25	0.043
11:26	0.043
11:27	0.043
11:28	0.04
11:29	0.043
11:30	0.042
11:31	0.041
11:32	0.039
11:33	0.039
11:34	0.039
11:35	0.044
11:36	0.052
11:37	0.052
11:38	0.036
11:39	0.034
11:40	0.043
11:41	0.042
11:42	0.044
11:43	0.032
11:44	0.041
11:45	0.036
11:46	0.031
11:47	0.027
11:48	0.568
11:49	0.116
11:50	0.039
11:51	0.039
11:52	0.029
11:53	0.043
11:54	0.274
11:55	0.058

11:56	0.308
11:57	0.093
11:58	0.188
11:59	0.054
12:00	0.029
12:01	0.023
12:02	0.021
12:03	0.016
12:04	0.082
12:05	0.028
12:06	0.02
12:07	0.019
12:08	0.088
12:09	0.02
12:10	0.012
12:11	0.021
12:12	0.024
12:13	0.011
12:14	0.017
12:15	0.052
12:16	0.05
12:17	0.102
12:18	0.094
12:19	0.019
12:20	0.01
12:21	0.011
12:22	0.021
12:23	0.019
12:24	0.015
12:25	0.033
12:26	0.018
12:27	0.02
12:28	0.022
12:29	0.02
12:30	0.009
12:31	0.009
12:32	0.037
12:33	0.055
12:34	0.021
12:35	0.051
12:36	0.128
12:37	0.074
12:38	0.064
12:39	0.009
12:40	0.014
12:41	0.01
12:42	0.006

12:43	0.026
12:44	0.008
12:45	0.007
12:46	0.008
12:47	0.017
12:48	0.009
12:49	0.018
12:50	0.016
12:51	0.007
12:52	0.006
12:53	0.005
12:54	0.015
12:55	0.009
12:56	0.064
12:57	0.017
12:58	0.015
12:59	0.01
13:00	0.006
13:01	0.017
13:02	0.015
13:03	0.009
13:04	0.011
13:05	0.011
13:06	0.011
13:07	0.02
13:08	0.02
13:09	0.04
13:10	0.007
13:11	0.008
13:12	0.01
13:13	0.294
13:14	0.018
13:15	0.017
13:16	0.029
13:17	0.008
13:18	0.007
13:19	0.009
13:20	0.032
13:21	0.024
13:22	0.021
13:23	0.014
13:24	0.008
13:25	0.005
13:26	0.011
13:27	0.011
13:28	0.008
13:29	0.007

13:30	0.012
13:31	0.052
13:32	0.016
13:33	0.008
13:34	0.013
13:35	0.017
13:36	0.015
13:37	0.03
13:38	0.064
13:39	0.026
13:40	0.012
13:41	0.019
13:42	0.062
13:43	0.043
13:44	0.02
13:45	0.009
13:46	0.03
13:47	0.048
13:48	0.03
13:49	0.011
13:50	0.017
13:51	0.012
13:52	0.016
13:53	0.012
13:54	0.009
13:55	0.01
13:56	0.012
13:57	0.011
13:58	0.022
13:59	0.012
14:00	0.016
14:01	0.01
14:02	0.107
14:03	0.01
14:04	0.007
14:05	0.004
14:06	0.012
14:07	0.02
14:08	0.195
14:09	0.014
14:10	0.009
14:11	0.007
14:12	0.007
14:13	0.006
14:14	0.007
14:15	0.006
14:16	0.01

14:17	0.007
14:18	0.514
14:19	0.016
14:20	0.023
14:21	0.013
14:22	0.095
14:23	0.013
14:24	0.098
14:25	0.02
14:26	0.027
14:27	0.032
14:28	0.013
14:29	0.005
14:30	0.004
14:31	0.008
14:32	0.005
14:33	0.007
14:34	0.008
14:35	0.031
14:36	0.015
14:37	0.008
14:38	0.008
14:39	0.015
14:40	0.012
14:41	0.006
14:42	0.007
14:43	0.013
14:44	0.005
14:45	0.009
14:46	0.006
14:47	0.007
14:48	0.027
14:49	0.013
14:50	0.018
14:51	0.016
14:52	0.018
14:53	0.008
14:54	0.007
14:55	0.012
14:56	0.011
14:57	0.008
14:58	0.042
14:59	0.024
15:00	0.098
15:01	0.017
15:02	0.006
15:03	0.008

15:04	0.023
15:05	0.03
15:06	0.028
15:07	0.03
15:08	0.027
15:09	0.017
15:10	0.024
15:11	0.008
15:12	0.007
15:13	0.007
15:14	0.009
15:15	0.006
15:16	0.011
15:17	0.015
15:18	0.012
15:19	0.006
15:20	0.006
15:21	0.006
15:22	0.006
15:23	0.006
15:24	0.011
15:25	0.007
15:26	0.011
15:27	0.007
15:28	0.006
15:29	0.005
15:30	0.006
15:31	0.008
15:32	0.024
15:33	0.013
15:34	0.016
15:35	0.041
15:36	0.007
15:37	0.011
15:38	0.009
15:39	0.022
15:40	0.021
15:41	0.007
15:42	0.004
15:43	0.012
15:44	0.024
15:45	0.004
15:46	0.006
15:47	0.015
15:48	0.038
15:49	0.022
15:50	0.013

15:51	0.014
15:52	0.013
15:53	0.012
15:54	0.014
15:55	0.05
15:56	0.024
15:57	0.02
15:58	0.063
15:59	0.118
16:00	0.045
16:01	0.022
16:02	0.015
16:03	0.013
16:04	0.014
16:05	0.013
16:06	0.026
16:07	0.112
16:08	0.089
16:09	0.057
16:10	0.02
16:11	0.015
16:12	0.023
16:13	0.051
16:14	0.018
16:15	0.023
16:16	0.038
16:17	0.074
16:18	0.019
16:19	0.021
16:20	0.012
16:21	0.007
16:22	0.029
16:23	0.01
16:24	0.013
16:25	0.03
16:26	0.018
16:27	0.024
16:28	0.032
16:29	0.044
16:30	0.009
16:31	0.006
16:32	0.057
16:33	0.07
16:34	0.021
16:35	0.018
16:36	0.008
16:37	0.02

16:38	0.01
16:39	0.038
16:40	0.051
16:41	0.009
16:42	0.011
16:43	0.009
16:44	0.243
16:45	0.007
16:46	0.007
16:47	0.017
16:48	0.006
16:49	0.006
16:50	0.031
16:51	0.005
16:52	0.011
16:53	0.004
16:54	0.016
16:55	0.01
16:56	0.011
16:57	0.006
16:58	0.008
16:59	0.023
17:00	0.015
17:01	0.013
17:02	1.21
17:03	0.059
17:04	0.111
17:05	0.069
17:06	0.098
17:07	0.051
17:08	0.022
17:09	0.016
17:10	0.039
17:11	0.01
17:12	0.038
17:13	0.043
17:14	0.007
17:15	0.074
17:16	0.012
17:17	0.053
17:18	0.256
17:19	0.082
17:20	0.111
17:21	0.02
17:22	0.026
17:23	0.391
17:24	0.487

17:25	0.099
17:26	0.032
17:27	0.05
17:28	0.007
17:29	0.006
17:30	0.395
17:31	0.064
17:32	0.021
17:33	0.015
17:34	0.003
17:35	0.005
17:36	0.006
17:37	0.005
17:38	0.004
17:39	0.069
17:40	0.004
17:41	0.056
17:42	0.06
17:43	0.005
17:44	0.005
17:45	0.024
17:46	0.007
17:47	0.004
17:48	0.057
17:49	0.008
17:50	0.008
17:51	0.017
17:52	0.005
17:53	0.005
17:54	0.007
17:55	0.004
17:56	0.004
17:57	0.015
17:58	0.004
17:59	0.004
18:00	0.011
18:01	0.006
18:02	0.023
18:03	0.12
18:04	0.008
18:05	0.021
18:06	0.006
18:07	0.014
18:08	0.011
18:09	0.092
18:10	0.135
18:11	0.008

18:12	0.021
18:13	0.012
18:14	0.01
18:15	0.014
18:16	0.013
18:17	0.011
18:18	0.006
18:19	0.006
18:20	0.006
18:21	0.008
18:22	0.017
18:23	0.006
18:24	0.007
18:25	0.01
18:26	0.005
18:27	0.061
18:28	0.119
18:29	0.021
18:30	0.033
18:31	0.012
18:32	0.023
18:33	0.03
18:34	0.076
18:35	0.008
18:36	0.021
18:37	0.017

SCM Report

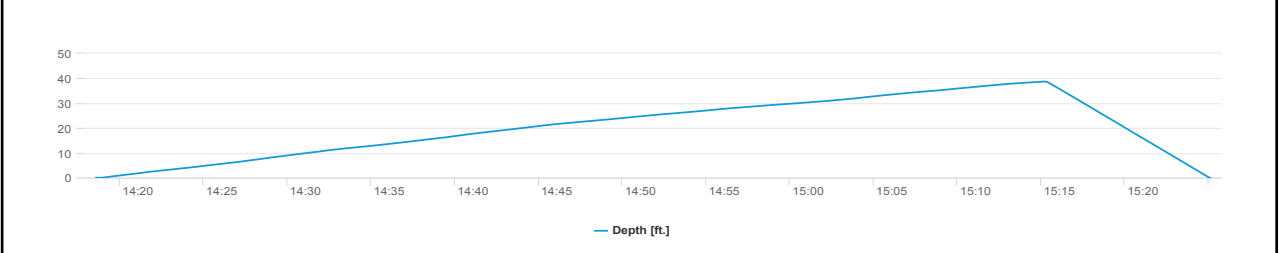
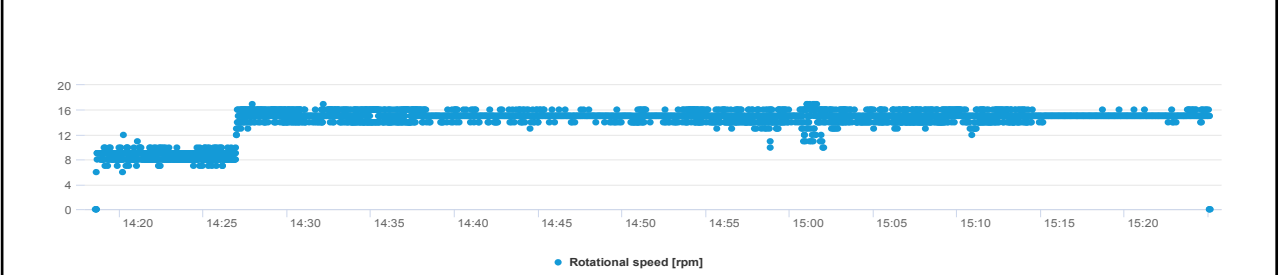
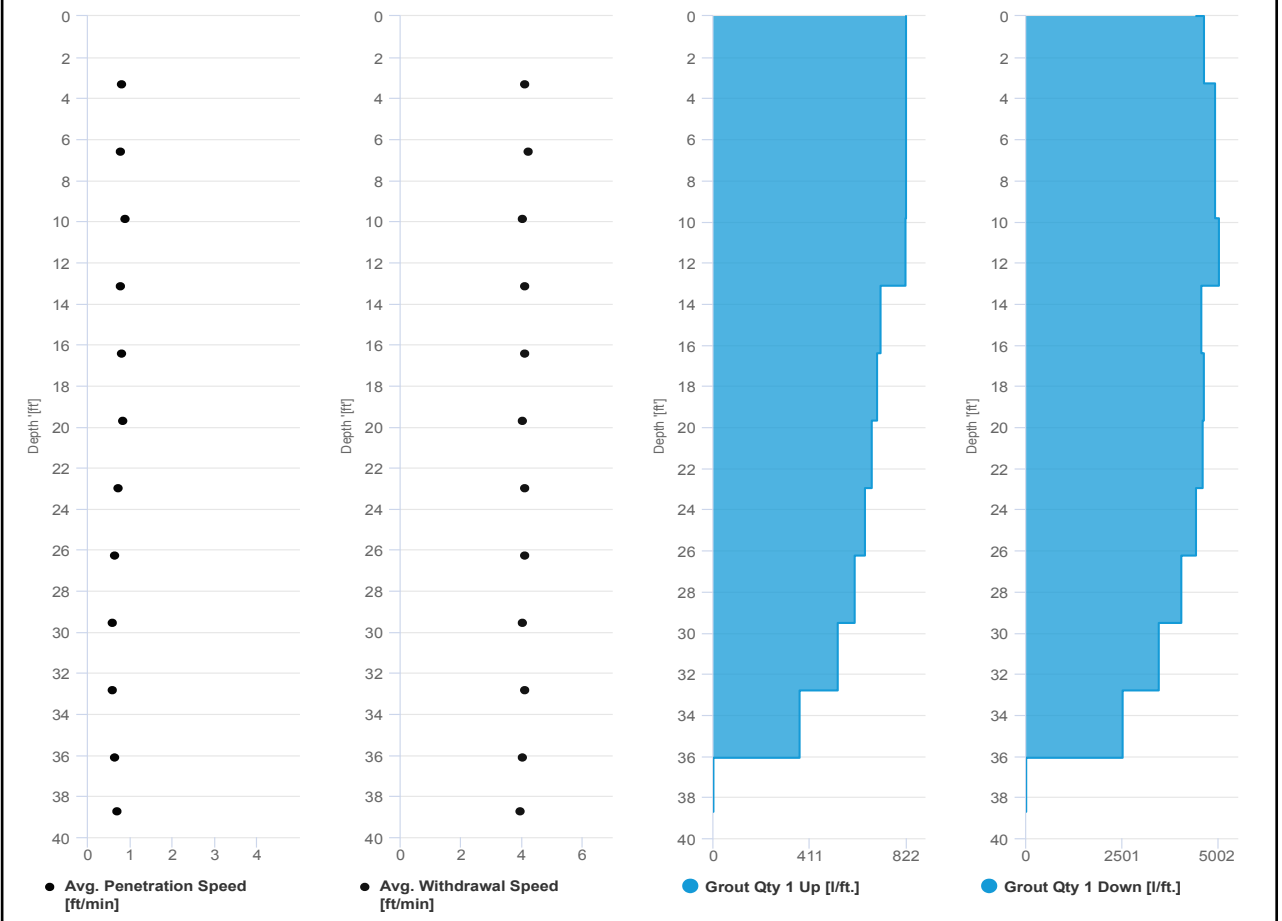


Project name	Douglass Street BCG ISS	Element name	180a
		Project number	

		Start date	10/14/2024
--	--	------------	------------

Drilling rig	BG36H_5717
--------------	------------

Details			
Max. depth	38.714 ft.	Start time	02:18 PM
Volume/m 1	45.909 ft³	End Date	10/14/2024
		End time	03:25 PM
		Production duration	01:06:33
		Final depth time	03:15 PM
		Total suspension quantity	542.398 ft³

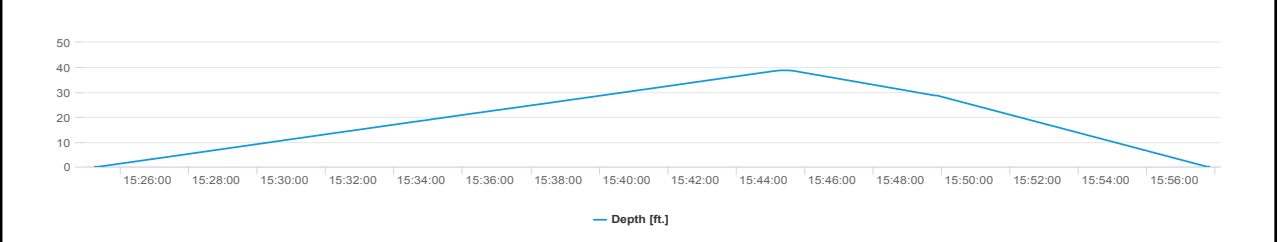
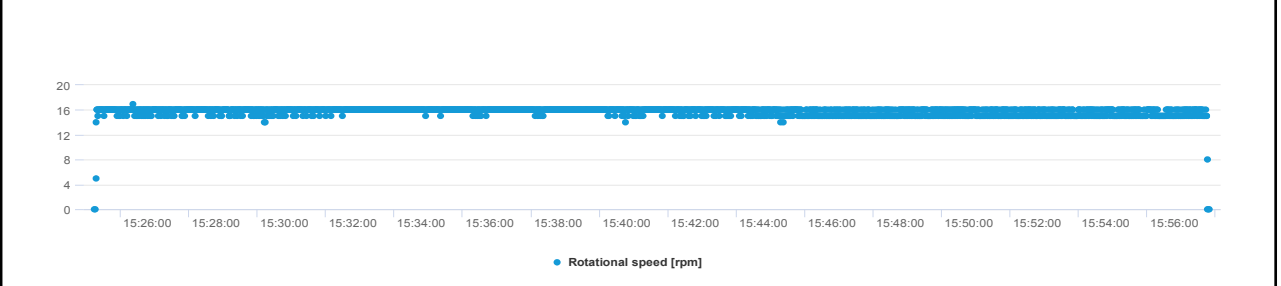
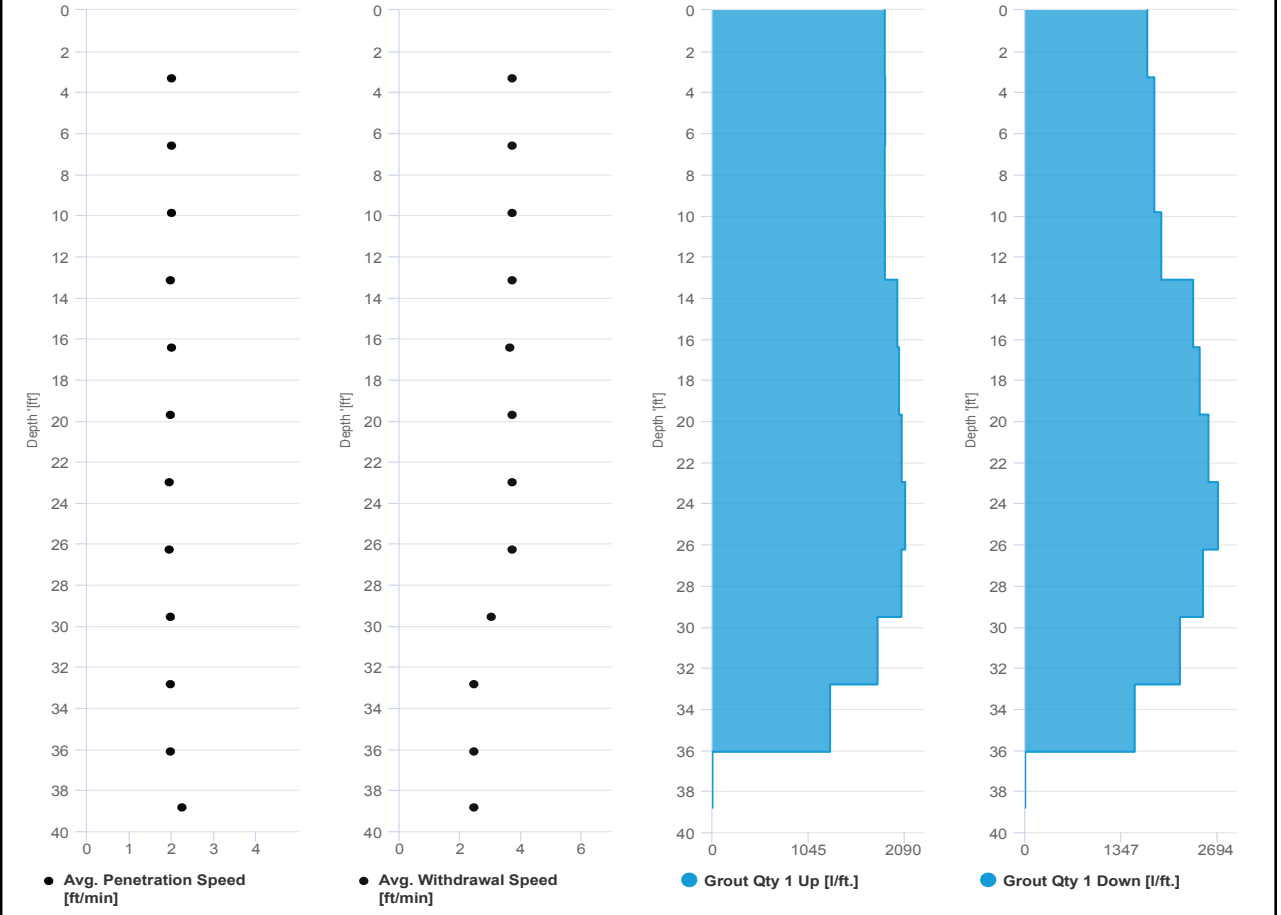


SCM Report



Project name	Douglass Street BCG ISS	Element name	180b
		Project number	
		Start date	10/14/2024
Drilling rig	BG36H_5717		

Details			
Max. depth	38.812 ft.	Start time	03:25 PM
Volume/m 1	36.374 ft ³	End Date	10/14/2024
		End time	03:57 PM
		Production duration	00:32:35
		Final depth time	03:45 PM
		Total suspension quantity	429.215 ft ³



SCM Report

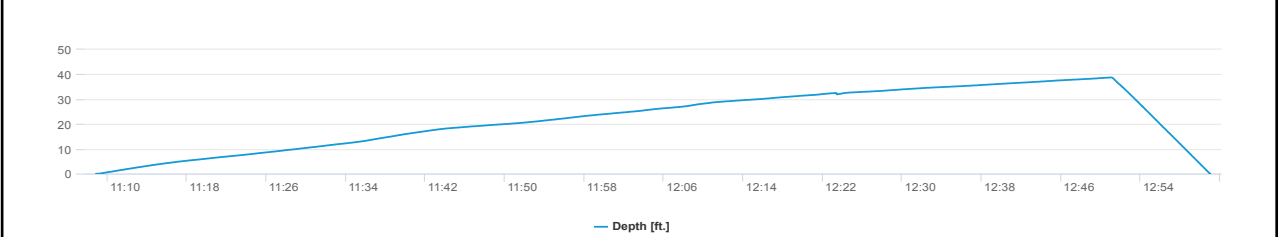
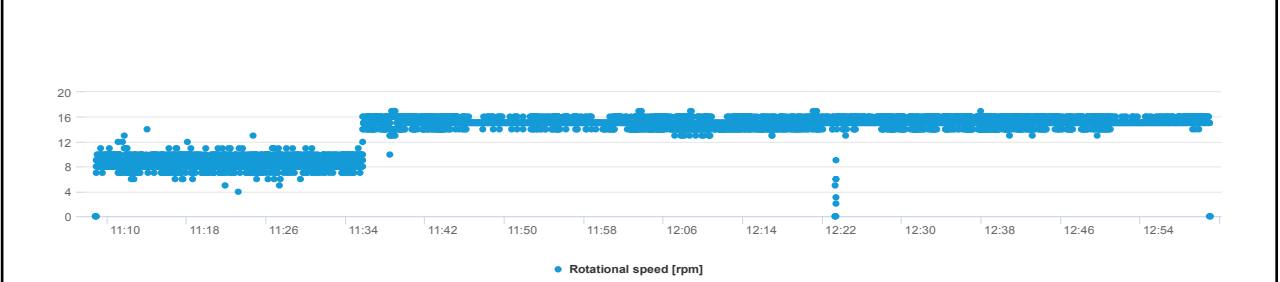
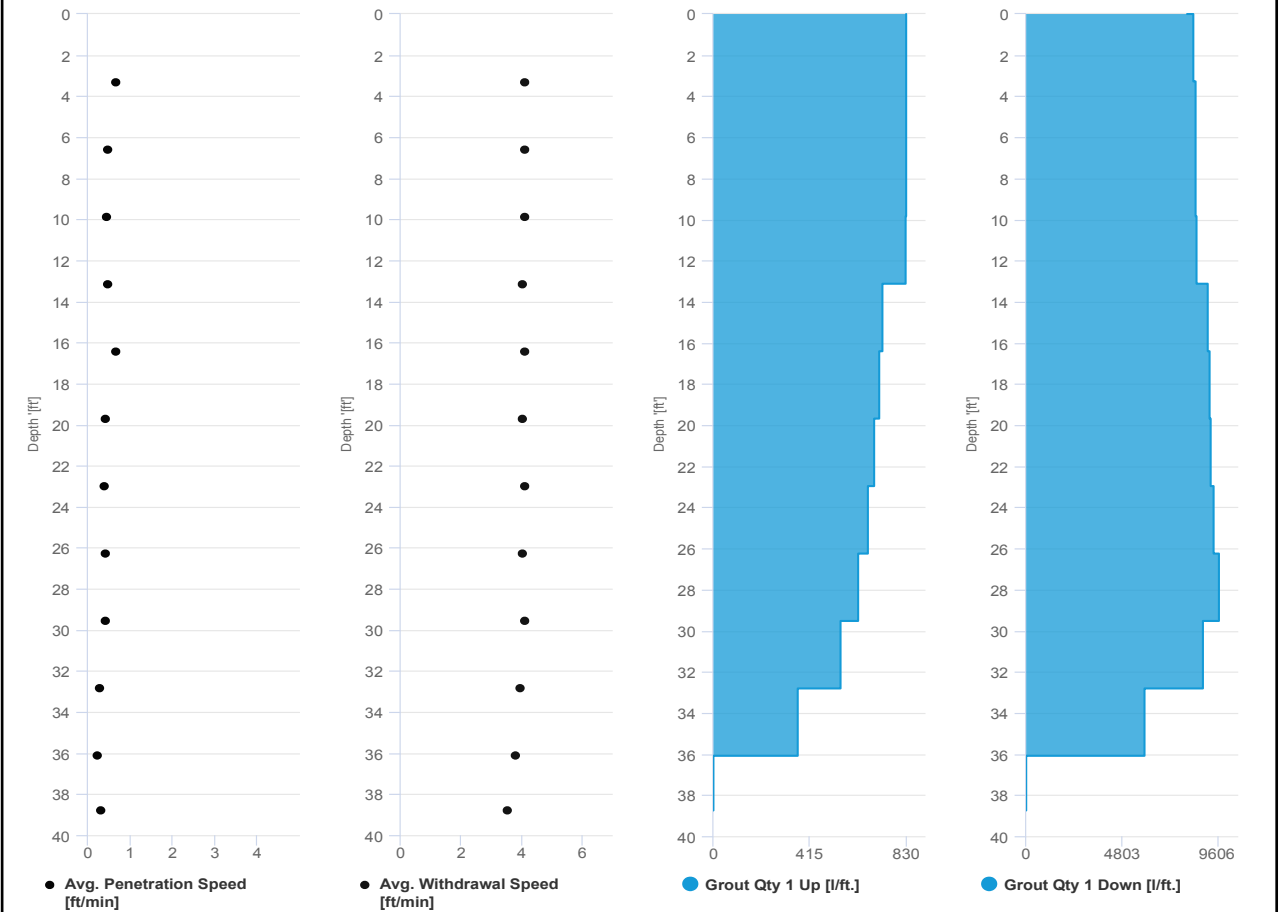


Project name	Douglass Street BCG ISS	Element name	178a
		Project number	

		Start date	10/14/2024
--	--	------------	------------

Drilling rig	BG36H_5717
--------------	------------

Details			
Max. depth	38.747 ft.	Start time	11:08 AM
Volume/m 1	77.692 ft ³	End Date	10/14/2024
		End time	01:01 PM
		Production duration	01:52:13
		Final depth time	12:50 PM
		Total suspension quantity	918.218 ft ³



SCM Report



Project name: Douglass Street BCG ISS Element name: 178b
 Project number

Start date: 10/14/2024

Drilling rig: BG36H_5717

Details		Start time: 01:01 PM	
Max. depth: 38.747 ft.		End Date: 10/14/2024	
Volume/m 1: 22.248 ft³		End time: 01:33 PM	
		Production duration: 00:32:39	
		Final depth time: 01:24 PM	
		Total suspension quantity: 261.435 ft³	

