



DAILY STATUS REPORT

Prepared By:
Ryan Just

WEATHER	Snow	Rain	X	Overcast	X	Partly Cloudy	Bright Sun	Wind
TEMP.	< 32	32-50	X	50-70	70-85	>85	SE – 18 mph	

IEEG Project No:	13928	NYSDEC BCP Site No:	C224367	Date: 12/11/24
Project:	251 Douglass Street, Brooklyn, NY			

<p>Consultant: Impact Environmental Engineering and Geology, PLLC (IEEG)</p> <p>Time On: 06:40 Time Out: 18:25</p>	<p>Personnel On Site: IEEG (Environmental) – Ryan Just Broadway Construction Group – Shannon Dowling/Tom Caporale Cascade – John Volmer WSP – Charlie Lambert</p> <p>Equipment On Site: (3) MiniRAE 3000 PID, (3) DustTrak II</p>
---	---

Scope of Work: IEEG to deploy CAMP stations according to wind direction; Cascade to continue ISS Column installation; and loadout of swell material.

Site Activities:

- IEEG deployed three (3) CAMP stations prior to the start of work activities;
- Cascade received two (2) deliveries of slag to the silos;
- A total of six (6) loads of swell material were disposed offsite at Pure Soil;
- Cascade drilled **Column 447** with column specification below:
 - Column is 8’ diameter and drilled 38’ deep from Site grade;
 - The column consisted of a total of 15 batches;
- Cascade drilled **Column 257** with column specification below:
 - Column is 8’ diameter and drilled 53’ deep from Site grade;
 - The column consisted of a total of 31 batches;
 - A wet mix sample was collected at 18’ deep from Site grade;
 - Downstroke 1 was paused from 13:37 to 13:53 in order to replace auger teeth;
- Cascade drilled **Column 385** with column specification below:
 - Column is 8’ diameter and drilled 53’ deep from Site grade;
 - The column consisted of a total of 30 batches;
 - A wet mix sample was collected at 19’ deep from Site grade;
- All stockpiles and excavations were sprayed with ATMOS foam and covered with poly sheeting at the end of Site activities

Community Air Monitoring Program (CAMP) - CAMP action level for dust (0.1 mg/m³) and VOCs (5 ppm)

- PID remained at nominal levels throughout the day
- No sustained dust exceedances were observed over a 15-min period during monitoring.
- Startup Upwind Conditions – PID = _0.0_ ppm, Dust = _0.018_ mg/m³ @ 07:00
- High Conditions (Upwind) – PID = _0.4_ ppm @13:27, Dust = _0.057_ mg/m³ @ 16:58
- High Conditions (Downwind 1) – PID = _1.5_ ppm @17:08, Dust = _0.057_ mg/m³ @ 08:44
- High Conditions (Downwind 2) – PID = _0.0_ ppm, Dust = _2.73_ mg/m³ @ 15:08

Notable Site Conditions:

- None.

Planned for the Next Day/Week:

- Cascade to continue drilling ISS columns;
- Cascade to continue loadout of swell material;
- Concrete Courses to continue super structure and rebar activities.



PHOTO LOG

251 DOUGLASS STREET, BROOKLYN, NY



Photo 1-
Representative
photo of
ATMOS foam
application
during swell
material
loadout.



Photo 2-
Representative
photo of ISS
installation.



Photo 3-
Representative
photo of wet
mix sampling.



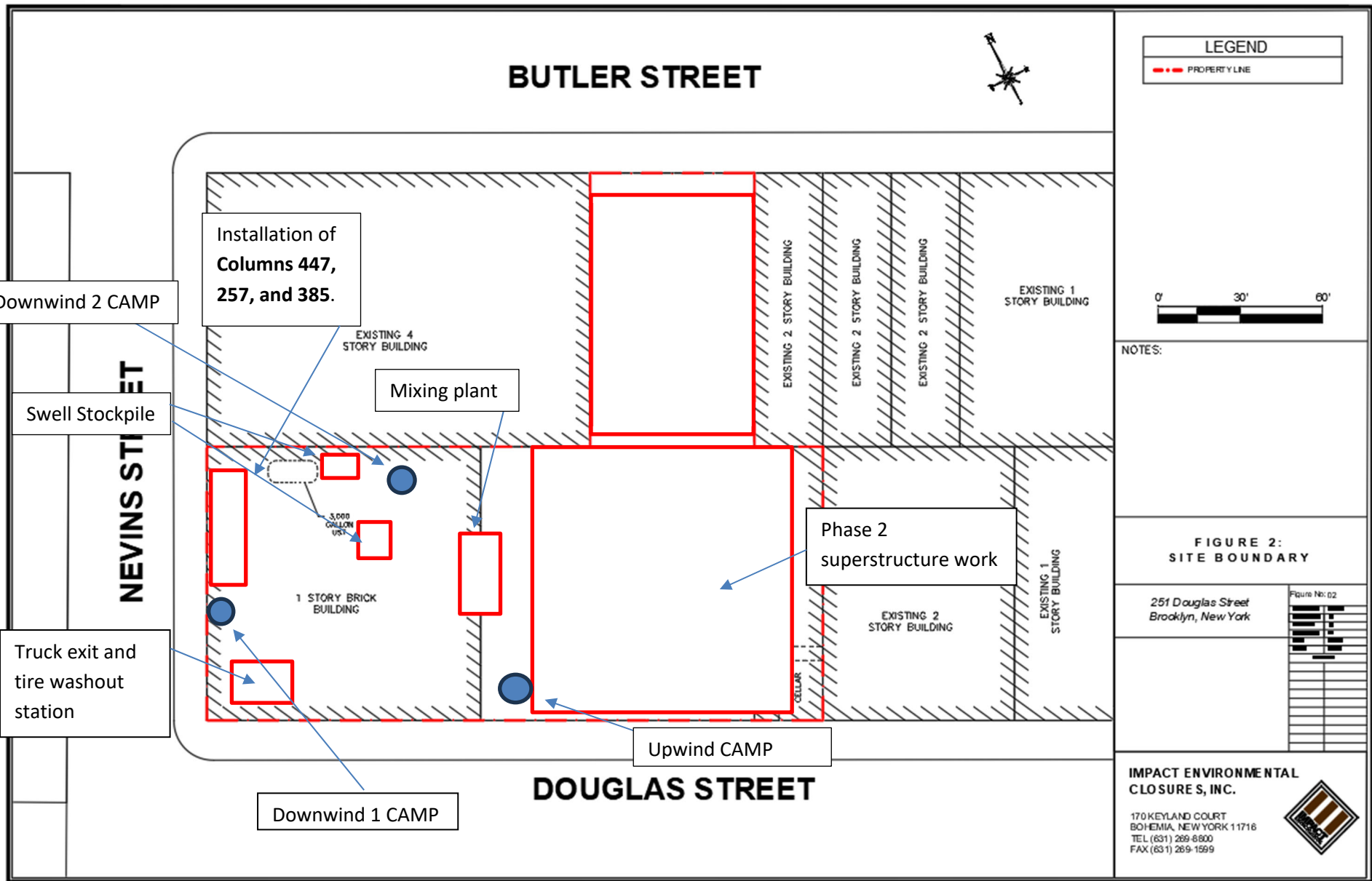
Photo 4-
Representative
photo of ISS
Area at end of
day.

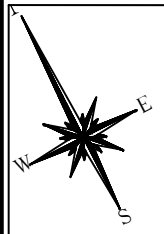


SITE PLANS

251 DOUGLASS STREET, BROOKLYN, NY







LEGEND

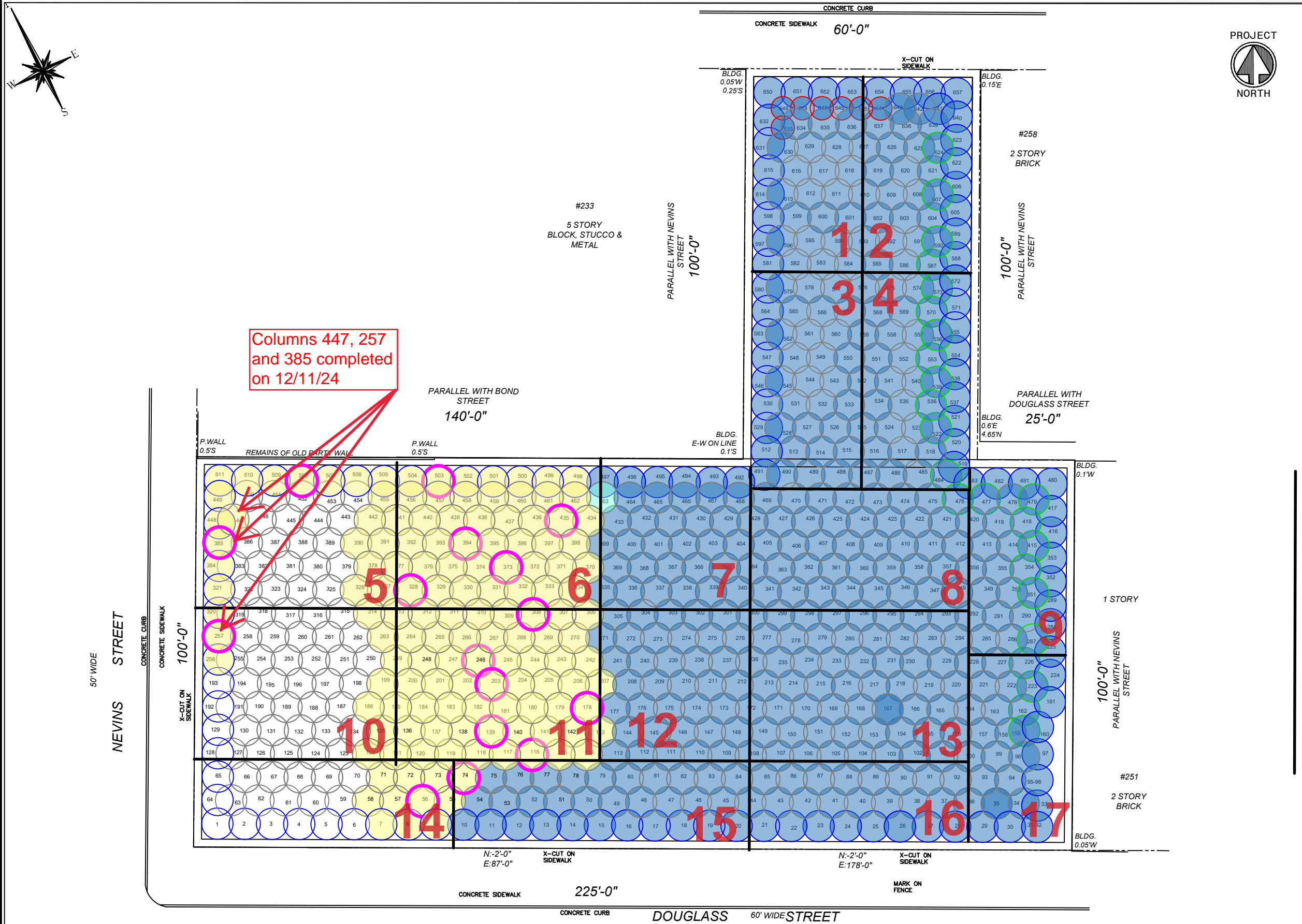
- PROPERTY LINE
- 55' EIGHT FOOT DIA. HYDRAULIC COLUMN (TYP.)
- EIGHT FOOT DIA. INNER COLUMN (TYP.)
- APPROVED TO 55'
- SIX FOOT DIA. HYDRAULIC COLUMN (TYP.)
- ISS COLUMN INSTALLED TO TERMINAL DEPTH
- ISS COLUMN UNABLE TO BE INSTALLED TO TERMINAL DEPTH
- ISS COLUMN / GRID APPROVED BY DEC
- WET MIX SAMPLE COLLECTED FROM ISS COLUMN
- ▲ COMPLETED CORING LOCATION

NOTES:
 1. THE BASE MAP WAS DRAWN FROM A PLAN ENTITLED, ALTA/NSPS LAND TITLE SURVEY, PREPARED BY PERFECT POINT LAND SURVEYING OF BROOKLYN, NY AND WAS RECEIVED ELECTRONICALLY ON APRIL 2023 WITH AN ORIGINAL SCALE: 1" = 20'.

251 Douglass Street Brooklyn, New York	
PROJECT NO:	13028-01
DESIGNED BY:	AB
DRAWN BY:	AB
CHECKED BY:	DP
DATE:	10/4/2024
SCALE:	N.T.S.
REVISIONS	

**IMPACT ENVIRONMENTAL
ENGINEERING & GEOLOGY
PLLC.**

170 KEYLAND COURT
BOHEMIA, NEW YORK 11716
TEL (631) 269-8800
FAX (631) 269-1599





UPWIND CAMP READINGS

251 DOUGLASS STREET, BROOKLYN, NY

Instrument Name	DustTrak II
Model Number	8530
Serial Number	8530152010
Firmware Version	3.1
Calibration Date	7/18/2024
Test Name	MANUAL_002
Test Start Time	6:59:08 AM
Test Start Date	12/11/2024
Test Length [D:H:M]	0:10:21
Test Interval [M:S]	1:00
Mass Average [mg/m3]	0.016
Mass Minimum [mg/m3]	0.006
Mass Maximum [mg/m3]	0.057
Mass TWA [mg/m3]	0.015
Photometric User Cal	1
Flow User Cal	0
Errors	
Number of Samples	621

Elapsed Time [s]	Mass [mg/m3]	Alarms	Errors
7:00	0.018		
7:01	0.006		
7:02	0.01		
7:03	0.012		
7:04	0.011		
7:05	0.008		
7:06	0.009		
7:07	0.01		
7:08	0.01		
7:09	0.01		
7:10	0.01		
7:11	0.01		
7:12	0.01		
7:13	0.01		
7:14	0.01		
7:15	0.01		
7:16	0.011		
7:17	0.01		
7:18	0.01		
7:19	0.011		
7:20	0.011		
7:21	0.011		
7:22	0.011		
7:23	0.011		
7:24	0.012		
7:25	0.013		
7:26	0.011		

7:27	0.013
7:28	0.012
7:29	0.011
7:30	0.011
7:31	0.011
7:32	0.011
7:33	0.011
7:34	0.011
7:35	0.009
7:36	0.009
7:37	0.009
7:38	0.01
7:39	0.009
7:40	0.009
7:41	0.009
7:42	0.01
7:43	0.01
7:44	0.01
7:45	0.009
7:46	0.01
7:47	0.01
7:48	0.009
7:49	0.011
7:50	0.01
7:51	0.01
7:52	0.009
7:53	0.009
7:54	0.01
7:55	0.009
7:56	0.01
7:57	0.01
7:58	0.01
7:59	0.011
8:00	0.012
8:01	0.011
8:02	0.011
8:03	0.011
8:04	0.011
8:05	0.01
8:06	0.011
8:07	0.009
8:08	0.01
8:09	0.011
8:10	0.009
8:11	0.01
8:12	0.009
8:13	0.01

8:14	0.01
8:15	0.009
8:16	0.012
8:17	0.012
8:18	0.01
8:19	0.01
8:20	0.019
8:21	0.015
8:22	0.011
8:23	0.012
8:24	0.011
8:25	0.014
8:26	0.011
8:27	0.011
8:28	0.011
8:29	0.011
8:30	0.012
8:31	0.013
8:32	0.013
8:33	0.012
8:34	0.015
8:35	0.014
8:36	0.042
8:37	0.018
8:38	0.013
8:39	0.012
8:40	0.012
8:41	0.013
8:42	0.014
8:43	0.015
8:44	0.037
8:45	0.021
8:46	0.024
8:47	0.029
8:48	0.038
8:49	0.03
8:50	0.018
8:51	0.016
8:52	0.015
8:53	0.019
8:54	0.016
8:55	0.016
8:56	0.015
8:57	0.014
8:58	0.014
8:59	0.014
9:00	0.014

9:01	0.014
9:02	0.014
9:03	0.014
9:04	0.013
9:05	0.013
9:06	0.013
9:07	0.019
9:08	0.013
9:09	0.014
9:10	0.017
9:11	0.016
9:12	0.015
9:13	0.014
9:14	0.013
9:15	0.023
9:16	0.016
9:17	0.016
9:18	0.015
9:19	0.015
9:20	0.013
9:21	0.012
9:22	0.012
9:23	0.013
9:24	0.013
9:25	0.012
9:26	0.012
9:27	0.012
9:28	0.012
9:29	0.015
9:30	0.019
9:31	0.012
9:32	0.013
9:33	0.02
9:34	0.016
9:35	0.015
9:36	0.017
9:37	0.023
9:38	0.04
9:39	0.015
9:40	0.016
9:41	0.017
9:42	0.025
9:43	0.017
9:44	0.015
9:45	0.016
9:46	0.016
9:47	0.019

9:48	0.017
9:49	0.016
9:50	0.042
9:51	0.017
9:52	0.016
9:53	0.016
9:54	0.016
9:55	0.016
9:56	0.017
9:57	0.017
9:58	0.018
9:59	0.017
10:00	0.019
10:01	0.018
10:02	0.017
10:03	0.017
10:04	0.016
10:05	0.016
10:06	0.017
10:07	0.017
10:08	0.016
10:09	0.016
10:10	0.017
10:11	0.017
10:12	0.016
10:13	0.016
10:14	0.018
10:15	0.025
10:16	0.022
10:17	0.018
10:18	0.015
10:19	0.015
10:20	0.015
10:21	0.015
10:22	0.015
10:23	0.016
10:24	0.016
10:25	0.016
10:26	0.017
10:27	0.017
10:28	0.015
10:29	0.017
10:30	0.015
10:31	0.015
10:32	0.016
10:33	0.015
10:34	0.024

10:35	0.015
10:36	0.016
10:37	0.015
10:38	0.015
10:39	0.023
10:40	0.017
10:41	0.02
10:42	0.014
10:43	0.014
10:44	0.014
10:45	0.015
10:46	0.013
10:47	0.013
10:48	0.013
10:49	0.014
10:50	0.015
10:51	0.025
10:52	0.015
10:53	0.013
10:54	0.013
10:55	0.016
10:56	0.017
10:57	0.015
10:58	0.014
10:59	0.017
11:00	0.02
11:01	0.015
11:02	0.013
11:03	0.014
11:04	0.014
11:05	0.016
11:06	0.014
11:07	0.015
11:08	0.014
11:09	0.015
11:10	0.028
11:11	0.016
11:12	0.013
11:13	0.013
11:14	0.013
11:15	0.013
11:16	0.014
11:17	0.014
11:18	0.015
11:19	0.017
11:20	0.016
11:21	0.015

11:22	0.015
11:23	0.015
11:24	0.017
11:25	0.019
11:26	0.016
11:27	0.017
11:28	0.016
11:29	0.016
11:30	0.018
11:31	0.018
11:32	0.016
11:33	0.015
11:34	0.016
11:35	0.016
11:36	0.016
11:37	0.016
11:38	0.017
11:39	0.016
11:40	0.016
11:41	0.016
11:42	0.017
11:43	0.017
11:44	0.017
11:45	0.017
11:46	0.017
11:47	0.018
11:48	0.017
11:49	0.017
11:50	0.017
11:51	0.026
11:52	0.022
11:53	0.018
11:54	0.018
11:55	0.017
11:56	0.045
11:57	0.021
11:58	0.017
11:59	0.017
12:00	0.017
12:01	0.018
12:02	0.017
12:03	0.017
12:04	0.019
12:05	0.018
12:06	0.019
12:07	0.019
12:08	0.018

12:09	0.02
12:10	0.022
12:11	0.022
12:12	0.019
12:13	0.02
12:14	0.024
12:15	0.019
12:16	0.019
12:17	0.019
12:18	0.02
12:19	0.024
12:20	0.022
12:21	0.021
12:22	0.02
12:23	0.02
12:24	0.02
12:25	0.02
12:26	0.018
12:27	0.017
12:28	0.018
12:29	0.02
12:30	0.017
12:31	0.016
12:32	0.017
12:33	0.016
12:34	0.014
12:35	0.014
12:36	0.016
12:37	0.014
12:38	0.014
12:39	0.014
12:40	0.013
12:41	0.014
12:42	0.031
12:43	0.031
12:44	0.014
12:45	0.013
12:46	0.012
12:47	0.012
12:48	0.015
12:49	0.012
12:50	0.013
12:51	0.017
12:52	0.018
12:53	0.012
12:54	0.011
12:55	0.012

12:56	0.021
12:57	0.016
12:58	0.011
12:59	0.01
13:00	0.012
13:01	0.011
13:02	0.011
13:03	0.011
13:04	0.011
13:05	0.011
13:06	0.017
13:07	0.012
13:08	0.012
13:09	0.012
13:10	0.012
13:11	0.011
13:12	0.013
13:13	0.014
13:14	0.013
13:15	0.014
13:16	0.012
13:17	0.014
13:18	0.011
13:19	0.011
13:20	0.014
13:21	0.012
13:22	0.011
13:23	0.011
13:24	0.011
13:25	0.012
13:26	0.012
13:27	0.011
13:28	0.012
13:29	0.012
13:30	0.014
13:31	0.013
13:32	0.011
13:33	0.013
13:34	0.011
13:35	0.012
13:36	0.01
13:37	0.01
13:38	0.01
13:39	0.01
13:40	0.011
13:41	0.01
13:42	0.011

13:43	0.01
13:44	0.009
13:45	0.009
13:46	0.009
13:47	0.01
13:48	0.009
13:49	0.008
13:50	0.008
13:51	0.008
13:52	0.008
13:53	0.008
13:54	0.008
13:55	0.008
13:56	0.008
13:57	0.008
13:58	0.008
13:59	0.011
14:00	0.013
14:01	0.008
14:02	0.008
14:03	0.009
14:04	0.008
14:05	0.014
14:06	0.008
14:07	0.008
14:08	0.008
14:09	0.01
14:10	0.017
14:11	0.009
14:12	0.009
14:13	0.01
14:14	0.01
14:15	0.01
14:16	0.01
14:17	0.01
14:18	0.01
14:19	0.011
14:20	0.012
14:21	0.012
14:22	0.014
14:23	0.012
14:24	0.017
14:25	0.023
14:26	0.016
14:27	0.013
14:28	0.013
14:29	0.016

14:30	0.016
14:31	0.014
14:32	0.014
14:33	0.013
14:34	0.013
14:35	0.021
14:36	0.014
14:37	0.013
14:38	0.015
14:39	0.023
14:40	0.014
14:41	0.013
14:42	0.013
14:43	0.012
14:44	0.013
14:45	0.014
14:46	0.013
14:47	0.013
14:48	0.014
14:49	0.015
14:50	0.014
14:51	0.013
14:52	0.013
14:53	0.013
14:54	0.014
14:55	0.013
14:56	0.014
14:57	0.014
14:58	0.014
14:59	0.02
15:00	0.016
15:01	0.014
15:02	0.014
15:03	0.014
15:04	0.014
15:05	0.015
15:06	0.015
15:07	0.016
15:08	0.016
15:09	0.016
15:10	0.016
15:11	0.017
15:12	0.016
15:13	0.02
15:14	0.017
15:15	0.015
15:16	0.016

15:17	0.016
15:18	0.016
15:19	0.016
15:20	0.016
15:21	0.017
15:22	0.018
15:23	0.018
15:24	0.018
15:25	0.018
15:26	0.019
15:27	0.018
15:28	0.018
15:29	0.023
15:30	0.023
15:31	0.019
15:32	0.018
15:33	0.027
15:34	0.019
15:35	0.018
15:36	0.018
15:37	0.018
15:38	0.025
15:39	0.02
15:40	0.017
15:41	0.016
15:42	0.018
15:43	0.017
15:44	0.022
15:45	0.017
15:46	0.016
15:47	0.016
15:48	0.016
15:49	0.02
15:50	0.016
15:51	0.017
15:52	0.016
15:53	0.015
15:54	0.018
15:55	0.016
15:56	0.016
15:57	0.017
15:58	0.02
15:59	0.023
16:00	0.018
16:01	0.016
16:02	0.015
16:03	0.015

16:04	0.014
16:05	0.014
16:06	0.014
16:07	0.024
16:08	0.021
16:09	0.014
16:10	0.014
16:11	0.014
16:12	0.019
16:13	0.014
16:14	0.014
16:15	0.016
16:16	0.013
16:17	0.015
16:18	0.014
16:19	0.013
16:20	0.014
16:21	0.026
16:22	0.023
16:23	0.016
16:24	0.014
16:25	0.013
16:26	0.015
16:27	0.014
16:28	0.014
16:29	0.016
16:30	0.023
16:31	0.056
16:32	0.024
16:33	0.015
16:34	0.014
16:35	0.015
16:36	0.02
16:37	0.015
16:38	0.016
16:39	0.014
16:40	0.014
16:41	0.013
16:42	0.013
16:43	0.013
16:44	0.013
16:45	0.013
16:46	0.013
16:47	0.014
16:48	0.018
16:49	0.014
16:50	0.014

16:51	0.014
16:52	0.015
16:53	0.016
16:54	0.016
16:55	0.022
16:56	0.053
16:57	0.044
16:58	0.057
16:59	0.057
17:00	0.019
17:01	0.023
17:02	0.02
17:03	0.02
17:04	0.018
17:05	0.018
17:06	0.018
17:07	0.022
17:08	0.034
17:09	0.02
17:10	0.039
17:11	0.027
17:12	0.024
17:13	0.021
17:14	0.021
17:15	0.02
17:16	0.023
17:17	0.027
17:18	0.02
17:19	0.024
17:20	0.02

DOWNWIND CAMP READINGS

251 DOUGLASS STREET, BROOKLYN, NY



Instrument Name	DustTrak II
Model Number	8530
Serial Number	8530224601
Firmware Version	3.1
Calibration Date	11/9/2022
Test Name	MANUAL_006
Test Start Time	7:01:15 AM
Test Start Date	12/11/2024
Test Length [D:H:M]	0:10:12
Test Interval [M:S]	1:00
Mass Average [mg/m3]	0.024
Mass Minimum [mg/m3]	0.015
Mass Maximum [mg/m3]	0.057
Mass TWA [mg/m3]	0.023
Photometric User Cal	1
Flow User Cal	0
Errors	
Number of Samples	612

Elapsed Time [s]	Mass [mg/m3]	Alarms	Errors
7:02	0.036		
7:03	0.018		
7:04	0.019		
7:05	0.018		
7:06	0.019		
7:07	0.018		
7:08	0.018		
7:09	0.018		
7:10	0.019		
7:11	0.019		
7:12	0.019		
7:13	0.019		
7:14	0.019		
7:15	0.019		
7:16	0.02		
7:17	0.02		
7:18	0.02		
7:19	0.019		
7:20	0.021		
7:21	0.021		
7:22	0.02		
7:23	0.022		
7:24	0.02		
7:25	0.02		
7:26	0.02		
7:27	0.021		
7:28	0.02		

7:29	0.021
7:30	0.025
7:31	0.021
7:32	0.025
7:33	0.02
7:34	0.02
7:35	0.017
7:36	0.018
7:37	0.019
7:38	0.017
7:39	0.017
7:40	0.018
7:41	0.02
7:42	0.023
7:43	0.019
7:44	0.025
7:45	0.023
7:46	0.017
7:47	0.017
7:48	0.017
7:49	0.017
7:50	0.018
7:51	0.018
7:52	0.019
7:53	0.021
7:54	0.02
7:55	0.02
7:56	0.018
7:57	0.018
7:58	0.02
7:59	0.02
8:00	0.018
8:01	0.019
8:02	0.02
8:03	0.018
8:04	0.019
8:05	0.018
8:06	0.018
8:07	0.018
8:08	0.02
8:09	0.022
8:10	0.02
8:11	0.021
8:12	0.023
8:13	0.02
8:14	0.025
8:15	0.018

8:16	0.032
8:17	0.019
8:18	0.019
8:19	0.019
8:20	0.019
8:21	0.025
8:22	0.021
8:23	0.02
8:24	0.021
8:25	0.02
8:26	0.022
8:27	0.021
8:28	0.022
8:29	0.021
8:30	0.025
8:31	0.022
8:32	0.026
8:33	0.022
8:34	0.024
8:35	0.027
8:36	0.024
8:37	0.027
8:38	0.025
8:39	0.024
8:40	0.028
8:41	0.028
8:42	0.035
8:43	0.031
8:44	0.057
8:45	0.034
8:46	0.025
8:47	0.026
8:48	0.025
8:49	0.024
8:50	0.034
8:51	0.037
8:52	0.025
8:53	0.023
8:54	0.023
8:55	0.023
8:56	0.024
8:57	0.025
8:58	0.021
8:59	0.021
9:00	0.021
9:01	0.021
9:02	0.021

9:03	0.021
9:04	0.022
9:05	0.022
9:06	0.026
9:07	0.026
9:08	0.026
9:09	0.023
9:10	0.022
9:11	0.024
9:12	0.025
9:13	0.021
9:14	0.028
9:15	0.022
9:16	0.021
9:17	0.022
9:18	0.021
9:19	0.021
9:20	0.021
9:21	0.021
9:22	0.026
9:23	0.021
9:24	0.021
9:25	0.021
9:26	0.022
9:27	0.022
9:28	0.022
9:29	0.029
9:30	0.024
9:31	0.023
9:32	0.027
9:33	0.03
9:34	0.028
9:35	0.028
9:36	0.024
9:37	0.031
9:38	0.033
9:39	0.031
9:40	0.025
9:41	0.032
9:42	0.029
9:43	0.026
9:44	0.026
9:45	0.025
9:46	0.026
9:47	0.024
9:48	0.024
9:49	0.025

9:50	0.025
9:51	0.025
9:52	0.025
9:53	0.026
9:54	0.027
9:55	0.026
9:56	0.026
9:57	0.027
9:58	0.026
9:59	0.026
10:00	0.026
10:01	0.026
10:02	0.025
10:03	0.025
10:04	0.025
10:05	0.025
10:06	0.025
10:07	0.025
10:08	0.026
10:09	0.026
10:10	0.027
10:11	0.029
10:12	0.027
10:13	0.026
10:14	0.024
10:15	0.025
10:16	0.024
10:17	0.024
10:18	0.024
10:19	0.025
10:20	0.025
10:21	0.025
10:22	0.025
10:23	0.025
10:24	0.029
10:25	0.028
10:26	0.025
10:27	0.025
10:28	0.022
10:29	0.023
10:30	0.023
10:31	0.023
10:32	0.023
10:33	0.023
10:34	0.023
10:35	0.024
10:36	0.023

10:37	0.022
10:38	0.022
10:39	0.023
10:40	0.023
10:41	0.022
10:42	0.021
10:43	0.021
10:44	0.024
10:45	0.024
10:46	0.022
10:47	0.022
10:48	0.022
10:49	0.022
10:50	0.021
10:51	0.022
10:52	0.022
10:53	0.027
10:54	0.027
10:55	0.023
10:56	0.028
10:57	0.023
10:58	0.023
10:59	0.023
11:00	0.022
11:01	0.024
11:02	0.025
11:03	0.025
11:04	0.023
11:05	0.024
11:06	0.024
11:07	0.022
11:08	0.022
11:09	0.022
11:10	0.022
11:11	0.022
11:12	0.023
11:13	0.022
11:14	0.023
11:15	0.025
11:16	0.024
11:17	0.023
11:18	0.023
11:19	0.023
11:20	0.026
11:21	0.027
11:22	0.026
11:23	0.025

11:24	0.024
11:25	0.025
11:26	0.028
11:27	0.024
11:28	0.024
11:29	0.024
11:30	0.024
11:31	0.025
11:32	0.025
11:33	0.025
11:34	0.024
11:35	0.025
11:36	0.024
11:37	0.026
11:38	0.027
11:39	0.025
11:40	0.025
11:41	0.025
11:42	0.025
11:43	0.025
11:44	0.025
11:45	0.026
11:46	0.026
11:47	0.026
11:48	0.027
11:49	0.027
11:50	0.027
11:51	0.026
11:52	0.027
11:53	0.026
11:54	0.026
11:55	0.026
11:56	0.026
11:57	0.026
11:58	0.026
11:59	0.027
12:00	0.028
12:01	0.029
12:02	0.028
12:03	0.027
12:04	0.028
12:05	0.028
12:06	0.028
12:07	0.028
12:08	0.028
12:09	0.029
12:10	0.028

12:11	0.027
12:12	0.027
12:13	0.029
12:14	0.029
12:15	0.029
12:16	0.029
12:17	0.029
12:18	0.029
12:19	0.029
12:20	0.03
12:21	0.027
12:22	0.027
12:23	0.026
12:24	0.027
12:25	0.026
12:26	0.026
12:27	0.025
12:28	0.024
12:29	0.023
12:30	0.023
12:31	0.023
12:32	0.023
12:33	0.022
12:34	0.023
12:35	0.023
12:36	0.023
12:37	0.023
12:38	0.023
12:39	0.024
12:40	0.023
12:41	0.021
12:42	0.021
12:43	0.02
12:44	0.02
12:45	0.02
12:46	0.019
12:47	0.02
12:48	0.02
12:49	0.021
12:50	0.019
12:51	0.02
12:52	0.019
12:53	0.02
12:54	0.019
12:55	0.019
12:56	0.019
12:57	0.018

12:58	0.02
12:59	0.02
13:00	0.02
13:01	0.02
13:02	0.02
13:03	0.02
13:04	0.02
13:05	0.019
13:06	0.023
13:07	0.03
13:08	0.02
13:09	0.021
13:10	0.02
13:11	0.02
13:12	0.021
13:13	0.024
13:14	0.019
13:15	0.021
13:16	0.019
13:17	0.02
13:18	0.02
13:19	0.022
13:20	0.02
13:21	0.02
13:22	0.02
13:23	0.02
13:24	0.023
13:25	0.02
13:26	0.023
13:27	0.021
13:28	0.02
13:29	0.02
13:30	0.02
13:31	0.019
13:32	0.019
13:33	0.019
13:34	0.019
13:35	0.018
13:36	0.018
13:37	0.018
13:38	0.018
13:39	0.018
13:40	0.017
13:41	0.018
13:42	0.019
13:43	0.017
13:44	0.016

13:45	0.016
13:46	0.016
13:47	0.016
13:48	0.016
13:49	0.016
13:50	0.017
13:51	0.016
13:52	0.016
13:53	0.016
13:54	0.016
13:55	0.016
13:56	0.016
13:57	0.015
13:58	0.016
13:59	0.016
14:00	0.016
14:01	0.017
14:02	0.016
14:03	0.016
14:04	0.016
14:05	0.017
14:06	0.018
14:07	0.018
14:08	0.018
14:09	0.018
14:10	0.019
14:11	0.018
14:12	0.019
14:13	0.019
14:14	0.02
14:15	0.022
14:16	0.022
14:17	0.024
14:18	0.022
14:19	0.022
14:20	0.023
14:21	0.026
14:22	0.022
14:23	0.023
14:24	0.023
14:25	0.024
14:26	0.025
14:27	0.025
14:28	0.023
14:29	0.024
14:30	0.023
14:31	0.024

14:32	0.024
14:33	0.023
14:34	0.025
14:35	0.024
14:36	0.022
14:37	0.022
14:38	0.022
14:39	0.023
14:40	0.022
14:41	0.022
14:42	0.022
14:43	0.022
14:44	0.026
14:45	0.024
14:46	0.024
14:47	0.022
14:48	0.023
14:49	0.023
14:50	0.023
14:51	0.023
14:52	0.024
14:53	0.024
14:54	0.024
14:55	0.025
14:56	0.025
14:57	0.024
14:58	0.026
14:59	0.024
15:00	0.025
15:01	0.026
15:02	0.036
15:03	0.027
15:04	0.026
15:05	0.025
15:06	0.025
15:07	0.026
15:08	0.038
15:09	0.032
15:10	0.025
15:11	0.026
15:12	0.026
15:13	0.026
15:14	0.026
15:15	0.027
15:16	0.027
15:17	0.028
15:18	0.029

15:19	0.029
15:20	0.029
15:21	0.029
15:22	0.029
15:23	0.029
15:24	0.029
15:25	0.029
15:26	0.029
15:27	0.029
15:28	0.03
15:29	0.03
15:30	0.029
15:31	0.028
15:32	0.028
15:33	0.028
15:34	0.027
15:35	0.027
15:36	0.027
15:37	0.027
15:38	0.026
15:39	0.026
15:40	0.025
15:41	0.026
15:42	0.026
15:43	0.026
15:44	0.025
15:45	0.026
15:46	0.026
15:47	0.026
15:48	0.026
15:49	0.025
15:50	0.026
15:51	0.027
15:52	0.027
15:53	0.027
15:54	0.028
15:55	0.029
15:56	0.028
15:57	0.026
15:58	0.026
15:59	0.025
16:00	0.024
16:01	0.024
16:02	0.023
16:03	0.024
16:04	0.024
16:05	0.03

16:06	0.027
16:07	0.025
16:08	0.028
16:09	0.032
16:10	0.029
16:11	0.03
16:12	0.031
16:13	0.028
16:14	0.036
16:15	0.029
16:16	0.028
16:17	0.028
16:18	0.026
16:19	0.028
16:20	0.027
16:21	0.024
16:22	0.035
16:23	0.028
16:24	0.024
16:25	0.029
16:26	0.025
16:27	0.029
16:28	0.025
16:29	0.023
16:30	0.023
16:31	0.023
16:32	0.025
16:33	0.024
16:34	0.031
16:35	0.028
16:36	0.022
16:37	0.025
16:38	0.027
16:39	0.03
16:40	0.025
16:41	0.024
16:42	0.025
16:43	0.027
16:44	0.026
16:45	0.026
16:46	0.024
16:47	0.028
16:48	0.025
16:49	0.03
16:50	0.026
16:51	0.028
16:52	0.031

16:53	0.032
16:54	0.042
16:55	0.028
16:56	0.042
16:57	0.048
16:58	0.032
16:59	0.032
17:00	0.033
17:01	0.029
17:02	0.031
17:03	0.029
17:04	0.034
17:05	0.033
17:06	0.036
17:07	0.036
17:08	0.03
17:09	0.034
17:10	0.033
17:11	0.032
17:12	0.037
17:13	0.034

Instrument Name	DustTrak II
Model Number	8530
Serial Number	8530154916
Firmware Version	3.1
Calibration Date	8/2/2024
Test Name	MANUAL_001
Test Start Time	6:57:26 AM
Test Start Date	12/11/2024
Test Length [D:H:M]	0:10:12
Test Interval [M:S]	1:00
Mass Average [mg/m3]	0.072
Mass Minimum [mg/m3]	0.015
Mass Maximum [mg/m3]	2.73
Mass TWA [mg/m3]	0.066
Photometric User Cal	1
Flow User Cal	0
Errors	
Number of Samples	612

Elapsed Time [s]	Mass [mg/m3]	Alarms	Errors
6:58	0.018		
6:59	0.019		
7:00	0.018		
7:01	0.019		
7:02	0.02		
7:03	0.019		
7:04	0.02		
7:05	0.02		
7:06	0.02		
7:07	0.022		
7:08	0.023		
7:09	0.021		
7:10	0.019		
7:11	0.019		
7:12	0.021		
7:13	0.02		
7:14	0.02		
7:15	0.022		
7:16	0.022		
7:17	0.026		
7:18	0.021		
7:19	0.02		
7:20	0.019		
7:21	0.019		
7:22	0.02		
7:23	0.019		
7:24	0.018		

7:25	0.018
7:26	0.019
7:27	0.018
7:28	0.018
7:29	0.017
7:30	0.017
7:31	0.019
7:32	0.017
7:33	0.017
7:34	0.019
7:35	0.017
7:36	0.018
7:37	0.018
7:38	0.017
7:39	0.018
7:40	0.017
7:41	0.02
7:42	0.018
7:43	0.018
7:44	0.021
7:45	0.019
7:46	0.017
7:47	0.017
7:48	0.018
7:49	0.021
7:50	0.019
7:51	0.017
7:52	0.018
7:53	0.018
7:54	0.019
7:55	0.019
7:56	0.019
7:57	0.019
7:58	0.023
7:59	0.019
8:00	0.018
8:01	0.018
8:02	0.018
8:03	0.018
8:04	0.019
8:05	0.026
8:06	0.027
8:07	0.024
8:08	0.029
8:09	0.022
8:10	0.02
8:11	0.024

8:12	0.02
8:13	0.018
8:14	0.019
8:15	0.019
8:16	0.019
8:17	0.018
8:18	0.018
8:19	0.02
8:20	0.021
8:21	0.02
8:22	0.019
8:23	0.02
8:24	0.021
8:25	0.022
8:26	0.02
8:27	0.021
8:28	0.02
8:29	0.021
8:30	0.022
8:31	0.022
8:32	0.031
8:33	0.075
8:34	0.037
8:35	0.052
8:36	0.042
8:37	0.029
8:38	0.044
8:39	0.027
8:40	0.024
8:41	0.041
8:42	0.044
8:43	0.032
8:44	0.029
8:45	0.033
8:46	0.03
8:47	0.026
8:48	0.029
8:49	0.032
8:50	0.025
8:51	0.027
8:52	0.03
8:53	0.029
8:54	0.03
8:55	0.028
8:56	0.032
8:57	0.032
8:58	0.029

8:59	0.032
9:00	0.025
9:01	0.027
9:02	0.03
9:03	0.033
9:04	0.04
9:05	0.041
9:06	0.031
9:07	0.029
9:08	0.03
9:09	0.024
9:10	0.021
9:11	0.027
9:12	0.035
9:13	0.042
9:14	0.034
9:15	0.036
9:16	0.038
9:17	0.038
9:18	0.045
9:19	0.051
9:20	0.065
9:21	0.021
9:22	0.024
9:23	0.021
9:24	0.021
9:25	0.026
9:26	0.031
9:27	0.022
9:28	0.029
9:29	0.021
9:30	0.031
9:31	0.04
9:32	0.028
9:33	0.026
9:34	0.027
9:35	0.03
9:36	0.021
9:37	0.031
9:38	0.032
9:39	0.033
9:40	0.023
9:41	0.023
9:42	0.031
9:43	0.029
9:44	0.029
9:45	0.026

9:46	0.024
9:47	0.029
9:48	0.028
9:49	0.035
9:50	0.028
9:51	0.03
9:52	0.033
9:53	0.15
9:54	1.09
9:55	0.589
9:56	0.102
9:57	0.049
9:58	0.091
9:59	0.043
10:00	0.035
10:01	0.066
10:02	0.144
10:03	0.082
10:04	0.127
10:05	0.305
10:06	0.071
10:07	0.111
10:08	0.034
10:09	0.044
10:10	0.192
10:11	0.053
10:12	0.035
10:13	0.069
10:14	0.046
10:15	0.118
10:16	0.078
10:17	0.195
10:18	0.06
10:19	0.083
10:20	0.052
10:21	0.108
10:22	0.145
10:23	0.035
10:24	0.041
10:25	0.059
10:26	0.104
10:27	0.048
10:28	0.029
10:29	0.085
10:30	0.102
10:31	0.09
10:32	0.108

10:33	0.037
10:34	0.03
10:35	0.065
10:36	0.066
10:37	0.08
10:38	0.043
10:39	0.048
10:40	0.07
10:41	0.036
10:42	0.109
10:43	0.036
10:44	0.063
10:45	0.034
10:46	0.226
10:47	0.053
10:48	0.059
10:49	0.047
10:50	0.318
10:51	0.06
10:52	0.161
10:53	0.047
10:54	0.058
10:55	0.029
10:56	0.122
10:57	0.074
10:58	0.177
10:59	0.258
11:00	0.096
11:01	0.154
11:02	0.129
11:03	0.043
11:04	0.145
11:05	0.06
11:06	0.033
11:07	0.032
11:08	0.024
11:09	0.035
11:10	0.035
11:11	0.037
11:12	0.024
11:13	0.048
11:14	0.022
11:15	0.024
11:16	0.022
11:17	0.024
11:18	0.023
11:19	0.022

11:20	0.023
11:21	0.021
11:22	0.025
11:23	0.024
11:24	0.023
11:25	0.024
11:26	0.023
11:27	0.025
11:28	0.022
11:29	0.023
11:30	0.023
11:31	0.025
11:32	0.024
11:33	0.024
11:34	0.024
11:35	0.025
11:36	0.024
11:37	0.024
11:38	0.025
11:39	0.025
11:40	0.023
11:41	0.026
11:42	0.025
11:43	0.028
11:44	0.025
11:45	0.028
11:46	0.028
11:47	0.026
11:48	0.035
11:49	0.036
11:50	0.025
11:51	0.025
11:52	0.027
11:53	0.029
11:54	0.029
11:55	0.034
11:56	0.028
11:57	0.028
11:58	0.029
11:59	0.032
12:00	0.034
12:01	0.029
12:02	0.046
12:03	0.029
12:04	0.027
12:05	0.027
12:06	0.029

12:07	0.027
12:08	0.026
12:09	0.038
12:10	0.031
12:11	0.037
12:12	0.034
12:13	0.032
12:14	0.041
12:15	0.046
12:16	0.051
12:17	0.073
12:18	0.044
12:19	0.044
12:20	0.036
12:21	0.051
12:22	0.05
12:23	0.057
12:24	0.04
12:25	0.038
12:26	0.036
12:27	0.038
12:28	0.034
12:29	0.032
12:30	0.03
12:31	0.033
12:32	0.041
12:33	0.04
12:34	0.048
12:35	0.033
12:36	0.034
12:37	0.037
12:38	0.032
12:39	0.031
12:40	0.039
12:41	0.027
12:42	0.039
12:43	0.023
12:44	0.033
12:45	0.024
12:46	0.024
12:47	0.036
12:48	0.029
12:49	0.025
12:50	0.026
12:51	0.031
12:52	0.028
12:53	0.023

12:54	0.034
12:55	0.036
12:56	0.029
12:57	0.033
12:58	0.027
12:59	0.018
13:00	0.035
13:01	0.022
13:02	0.035
13:03	0.019
13:04	0.025
13:05	0.031
13:06	0.022
13:07	0.018
13:08	0.025
13:09	0.036
13:10	0.029
13:11	0.034
13:12	0.028
13:13	0.033
13:14	0.041
13:15	0.041
13:16	0.03
13:17	0.029
13:18	0.021
13:19	0.021
13:20	0.042
13:21	0.033
13:22	0.025
13:23	0.032
13:24	0.035
13:25	0.038
13:26	0.029
13:27	0.031
13:28	0.034
13:29	0.026
13:30	0.02
13:31	0.022
13:32	0.031
13:33	0.024
13:34	0.019
13:35	0.018
13:36	0.018
13:37	0.032
13:38	0.019
13:39	0.017
13:40	0.016

13:41	0.015
13:42	0.016
13:43	0.018
13:44	0.015
13:45	0.016
13:46	0.021
13:47	0.018
13:48	0.016
13:49	0.02
13:50	0.026
13:51	0.018
13:52	0.019
13:53	0.026
13:54	0.024
13:55	0.022
13:56	0.025
13:57	0.04
13:58	0.024
13:59	0.024
14:00	0.021
14:01	0.026
14:02	0.024
14:03	0.021
14:04	0.018
14:05	0.019
14:06	0.02
14:07	0.024
14:08	0.028
14:09	0.026
14:10	0.02
14:11	0.028
14:12	0.208
14:13	0.572
14:14	0.243
14:15	0.221
14:16	0.405
14:17	0.069
14:18	0.089
14:19	0.481
14:20	0.844
14:21	0.632
14:22	0.913
14:23	0.422
14:24	0.101
14:25	0.117
14:26	0.1
14:27	0.289

14:28	0.108
14:29	0.149
14:30	0.307
14:31	0.265
14:32	0.154
14:33	0.095
14:34	0.04
14:35	0.239
14:36	0.132
14:37	0.901
14:38	0.13
14:39	0.293
14:40	0.147
14:41	0.093
14:42	0.136
14:43	0.433
14:44	0.756
14:45	0.285
14:46	0.227
14:47	0.213
14:48	0.099
14:49	0.218
14:50	0.243
14:51	0.037
14:52	0.246
14:53	0.558
14:54	0.278
14:55	0.213
14:56	0.818
14:57	0.132
14:58	0.27
14:59	0.833
15:00	0.268
15:01	1.03
15:02	0.371
15:03	0.234
15:04	0.043
15:05	0.259
15:06	0.326
15:07	1.07
15:08	2.73
15:09	0.178
15:10	1.46
15:11	0.158
15:12	0.173
15:13	0.102
15:14	0.083

15:15	0.037
15:16	0.03
15:17	0.025
15:18	0.024
15:19	0.028
15:20	0.028
15:21	0.033
15:22	0.033
15:23	0.028
15:24	0.029
15:25	0.028
15:26	0.028
15:27	0.028
15:28	0.026
15:29	0.028
15:30	0.027
15:31	0.026
15:32	0.024
15:33	0.026
15:34	0.026
15:35	0.026
15:36	0.028
15:37	0.025
15:38	0.027
15:39	0.024
15:40	0.026
15:41	0.022
15:42	0.028
15:43	0.029
15:44	0.023
15:45	0.024
15:46	0.025
15:47	0.03
15:48	0.022
15:49	0.029
15:50	0.03
15:51	0.027
15:52	0.028
15:53	0.027
15:54	0.029
15:55	0.028
15:56	0.028
15:57	0.033
15:58	0.027
15:59	0.033
16:00	0.038
16:01	0.025

16:02	0.022
16:03	0.028
16:04	0.033
16:05	0.035
16:06	0.025
16:07	0.034
16:08	0.038
16:09	0.025
16:10	0.025
16:11	0.023
16:12	0.023
16:13	0.028
16:14	0.036
16:15	0.025
16:16	0.027
16:17	0.025
16:18	0.024
16:19	0.031
16:20	0.031
16:21	0.037
16:22	0.023
16:23	0.023
16:24	0.026
16:25	0.029
16:26	0.026
16:27	0.027
16:28	0.024
16:29	0.027
16:30	0.021
16:31	0.029
16:32	0.029
16:33	0.029
16:34	0.025
16:35	0.025
16:36	0.024
16:37	0.026
16:38	0.029
16:39	0.026
16:40	0.029
16:41	0.023
16:42	0.024
16:43	0.029
16:44	0.025
16:45	0.022
16:46	0.027
16:47	0.024
16:48	0.032

16:49	0.038
16:50	0.03
16:51	0.029
16:52	0.045
16:53	0.04
16:54	0.026
16:55	0.027
16:56	0.027
16:57	0.027
16:58	0.026
16:59	0.026
17:00	0.025
17:01	0.025
17:02	0.026
17:03	0.027
17:04	0.026
17:05	0.028
17:06	0.026
17:07	0.026
17:08	0.03
17:09	0.034

SCM Report

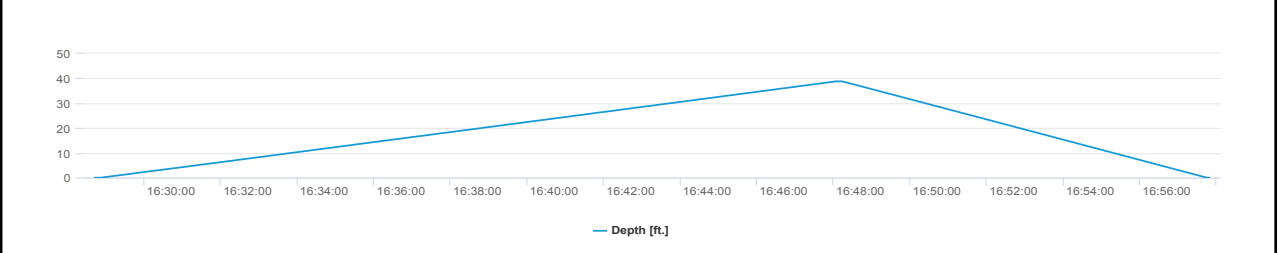
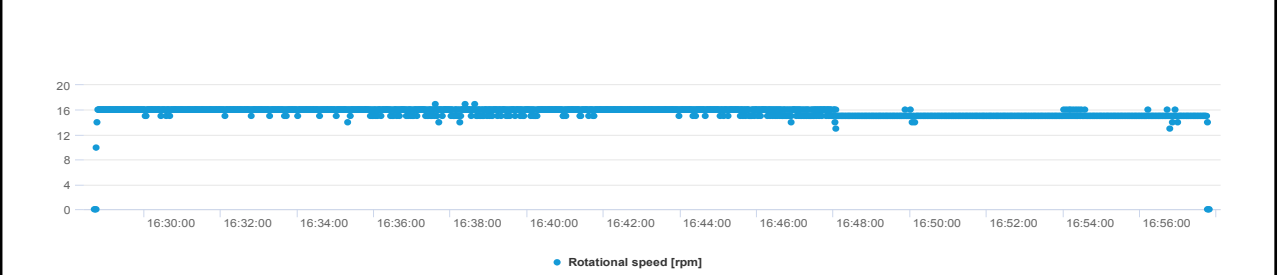
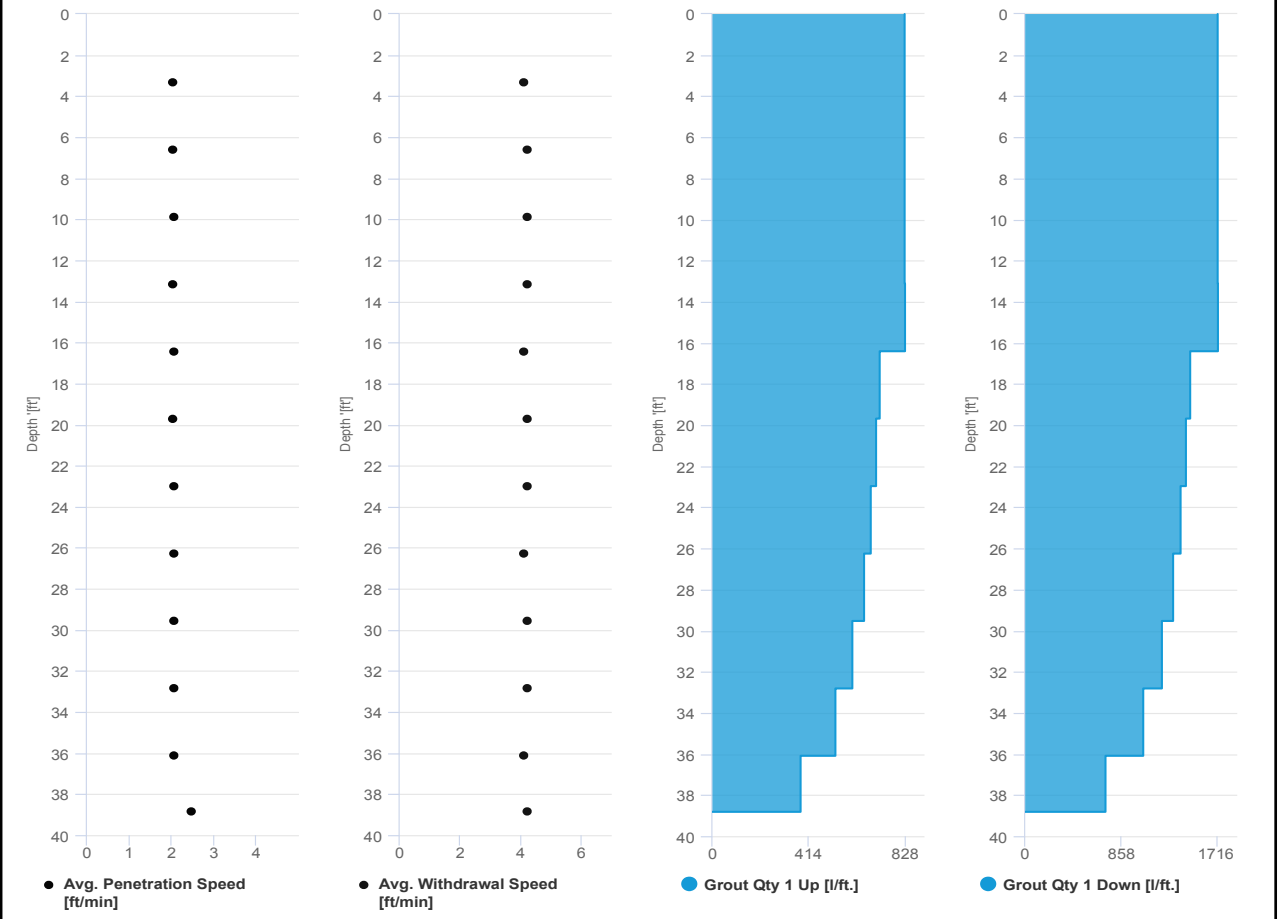


Project name	Douglass Street BCG ISS	Element name	447b
		Project number	

		Start date	12/11/2024
--	--	------------	------------

Drilling rig	BG36H_5717
--------------	------------

Details			
Max. depth	38.812 ft.	Start time	04:28 PM
Volume/m 1	20.836 ft ³	End Date	12/11/2024
		End time	04:57 PM
		Production duration	00:29:07
		Final depth time	04:48 PM
		Total suspension quantity	244.943 ft ³



SCM Report

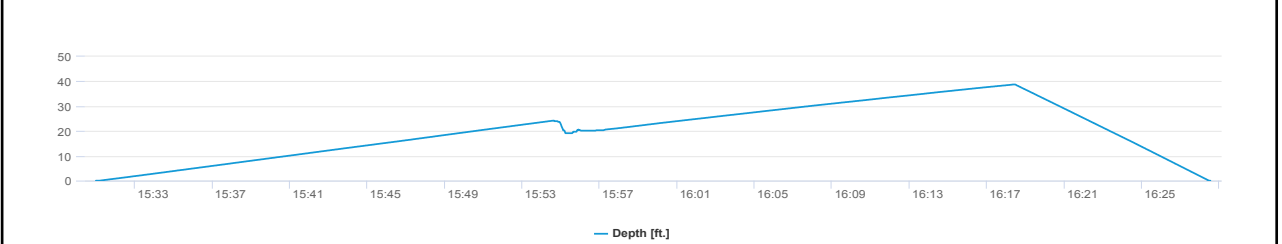
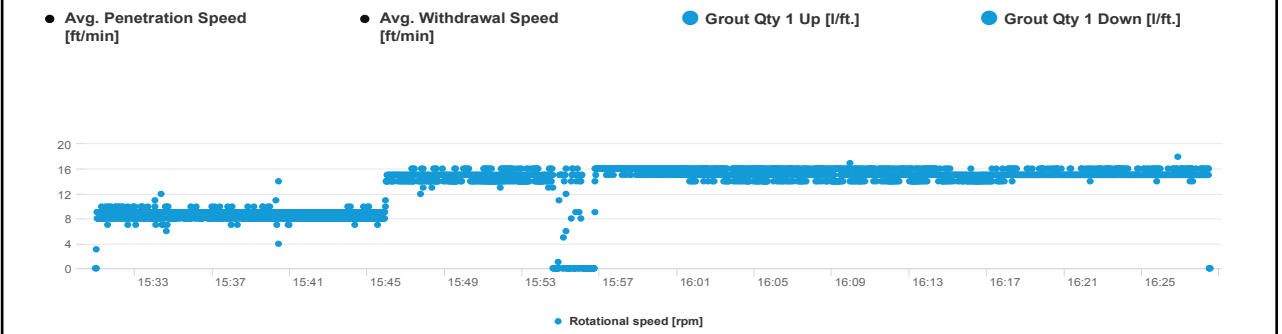
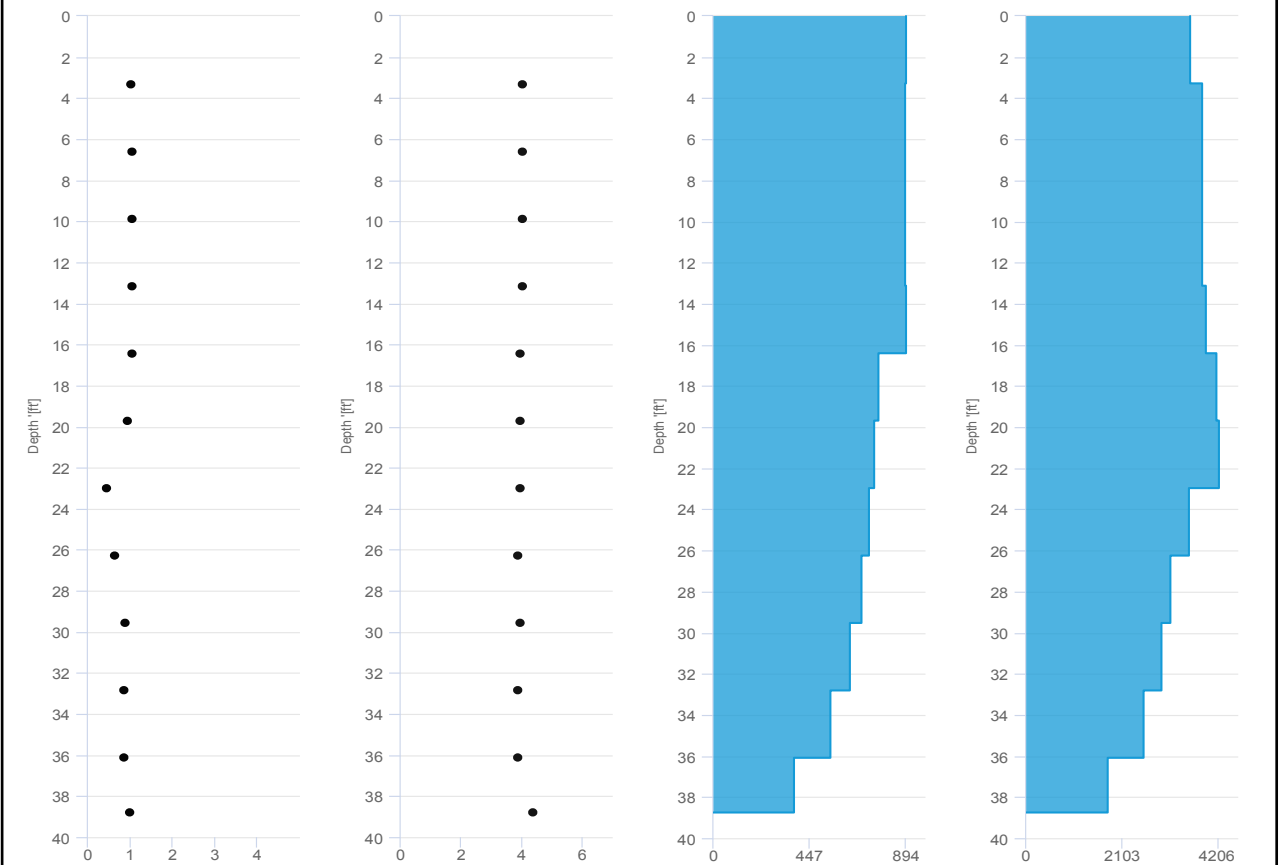


Project name	Douglass Street BCG ISS	Element name	447a
		Project number	

		Start date	12/11/2024
--	--	------------	------------

Drilling rig	BG36H_5717
--------------	------------

Details			
Max. depth	38.747 ft.	Start time	03:30 PM
Volume/m 1	40.965 ft³	End Date	12/11/2024
		End time	04:28 PM
		Production duration	00:57:35
		Final depth time	04:18 PM
		Total suspension quantity	485.506 ft³



SCM Report

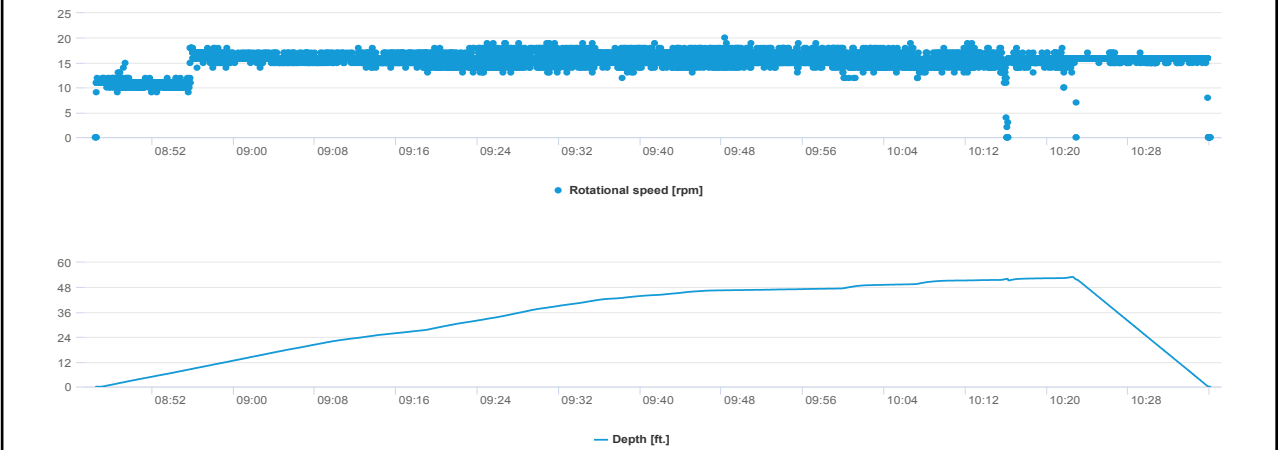
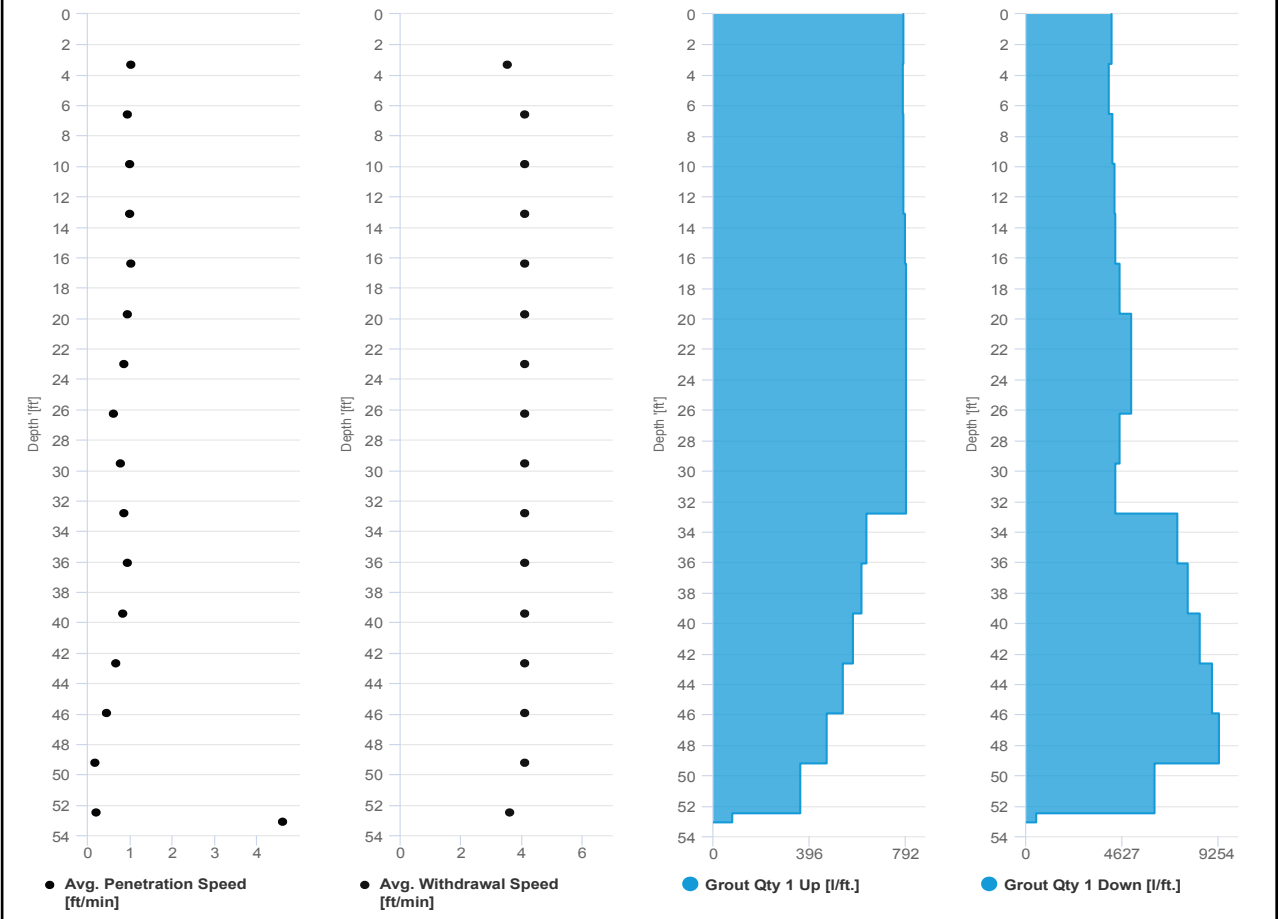


Project name: Douglass Street BCG ISS Element name: 385a
Project number

Start date: 12/11/2024

Drilling rig: BG36H_5717

Details		Start time: 08:46 AM	
Max. depth: 53.084 ft.		End Date: 12/11/2024	
Volume/m 1: 56.504 ft³		End time: 10:36 AM	
		Production duration: 01:49:39	
		Final depth time: 10:22 AM	
		Total suspension quantity: 911.967 ft³	



SCM Report

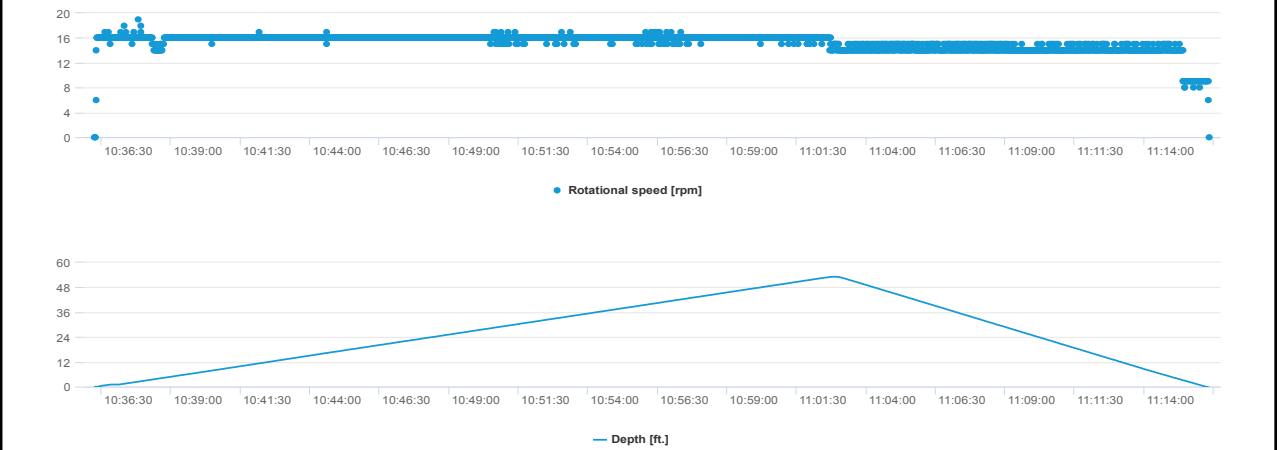
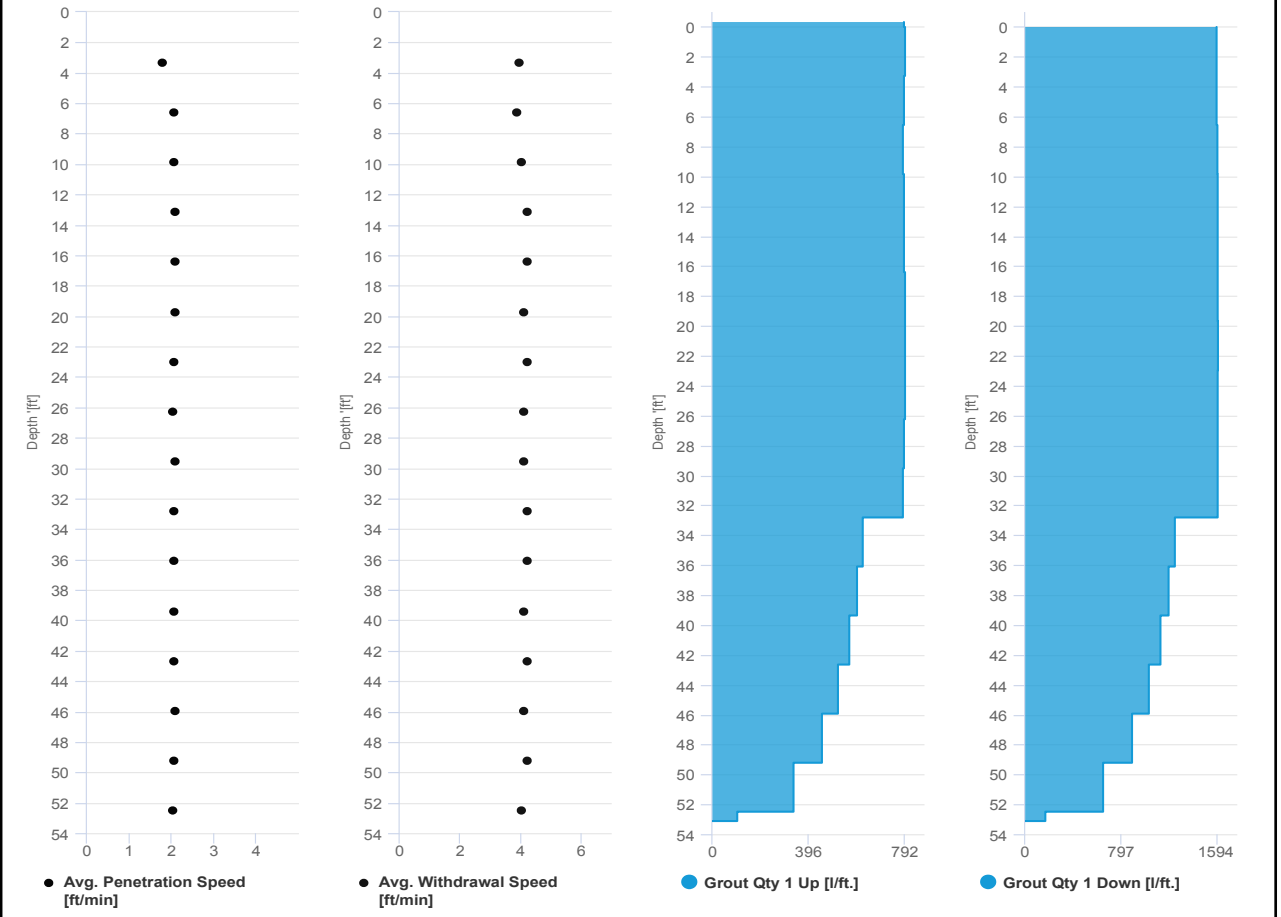


Project name: Douglass Street BCG ISS Element name: 385b
Project number

Start date: 12/11/2024

Drilling rig: BG36H_5717

Details		Start time: 10:36 AM	
Max. depth: 53.117 ft.		End Date: 12/11/2024	
Volume/m 1: 19.423 ft³		End time: 11:16 AM	
		Production duration: 00:40:06	
		Final depth time: 11:02 AM	
		Total suspension quantity: 315.396 ft³	



SCM Report

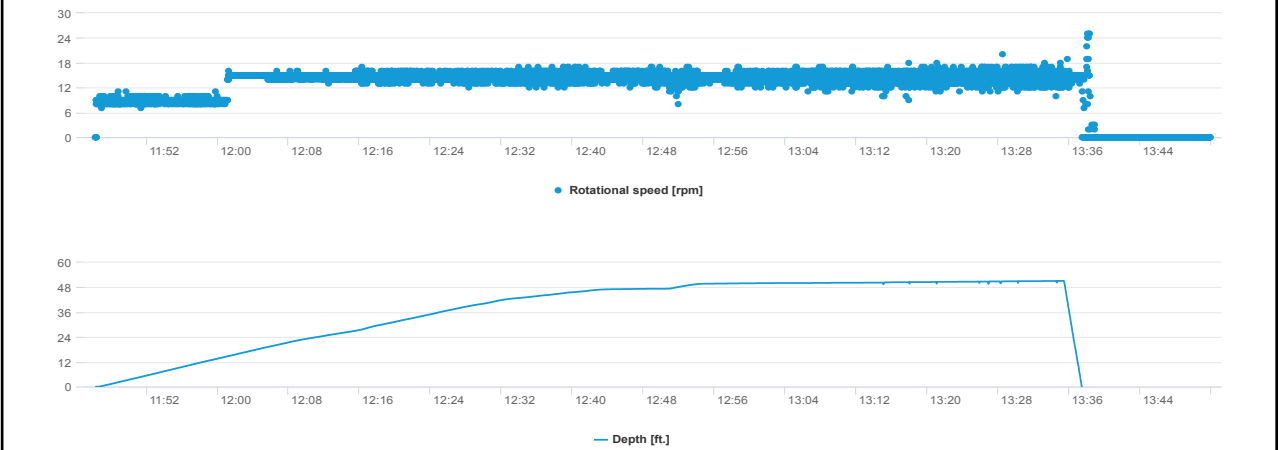
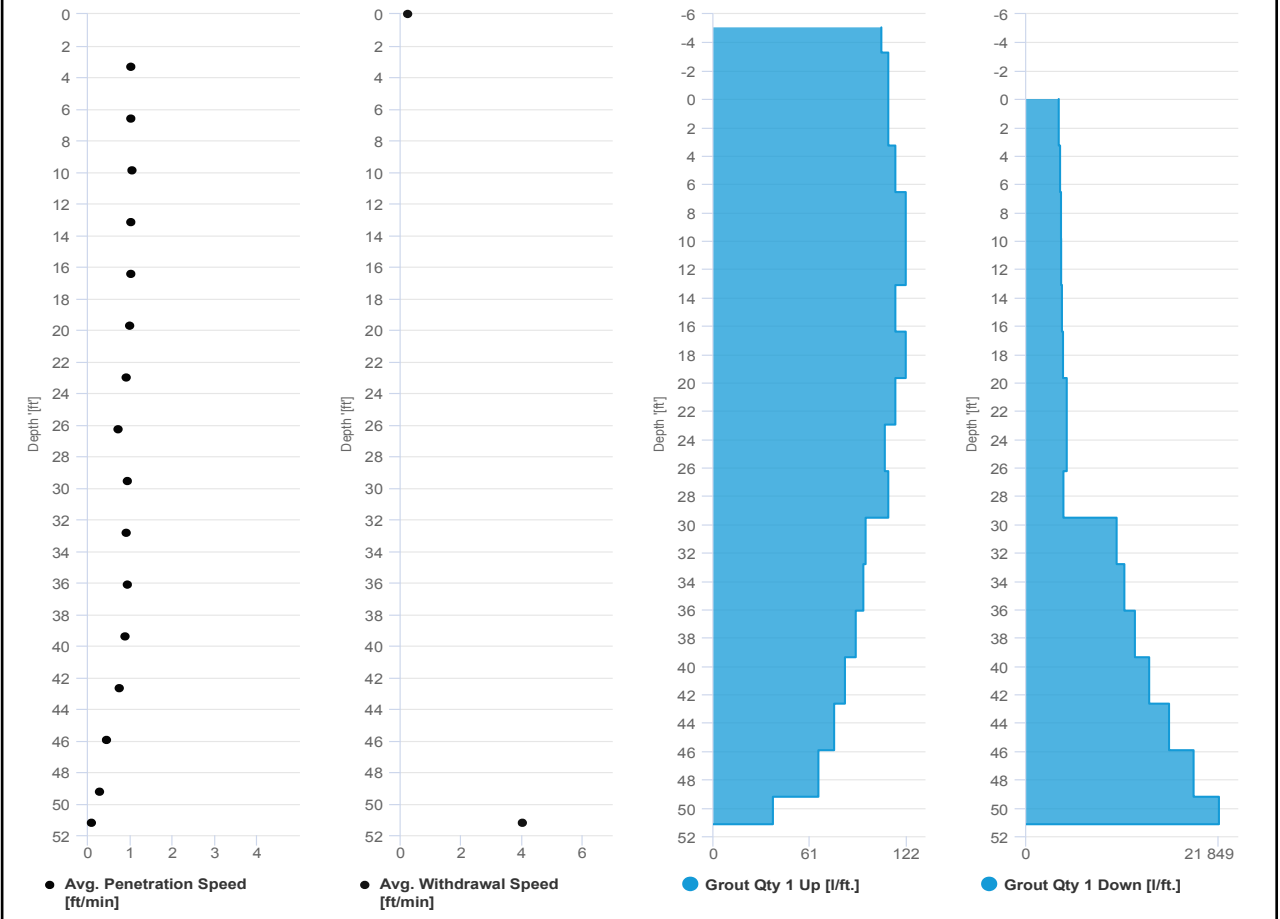


Project name: Douglass Street BCG ISS Element name: 257a
 Project number

Start date: 12/11/2024

Drilling rig: BG36H_5717

Details		Start time: 11:46 AM	
Max. depth: 51.148 ft.		End Date: 12/11/2024	
Volume/m 1: 61.448 ft³		End time: 01:51 PM	
		Production duration: 02:05:40	
		Final depth time: 01:34 PM	
		Total suspension quantity: 955.616 ft³	



SCM Report

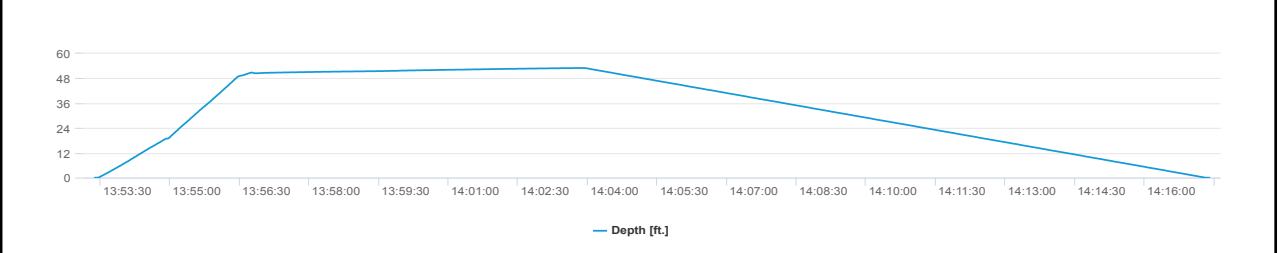
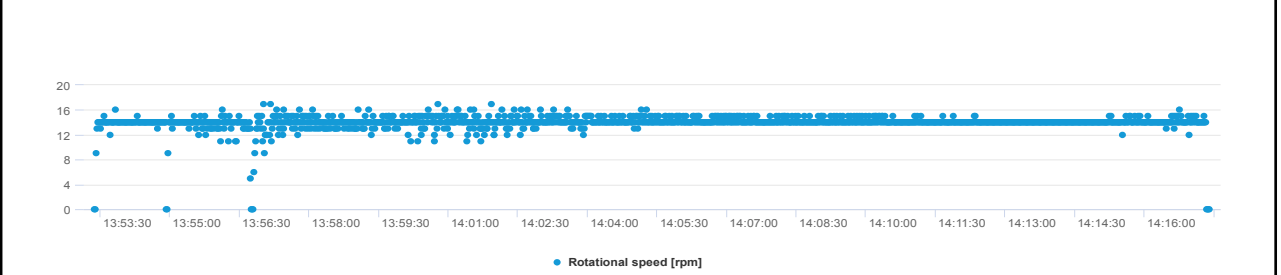
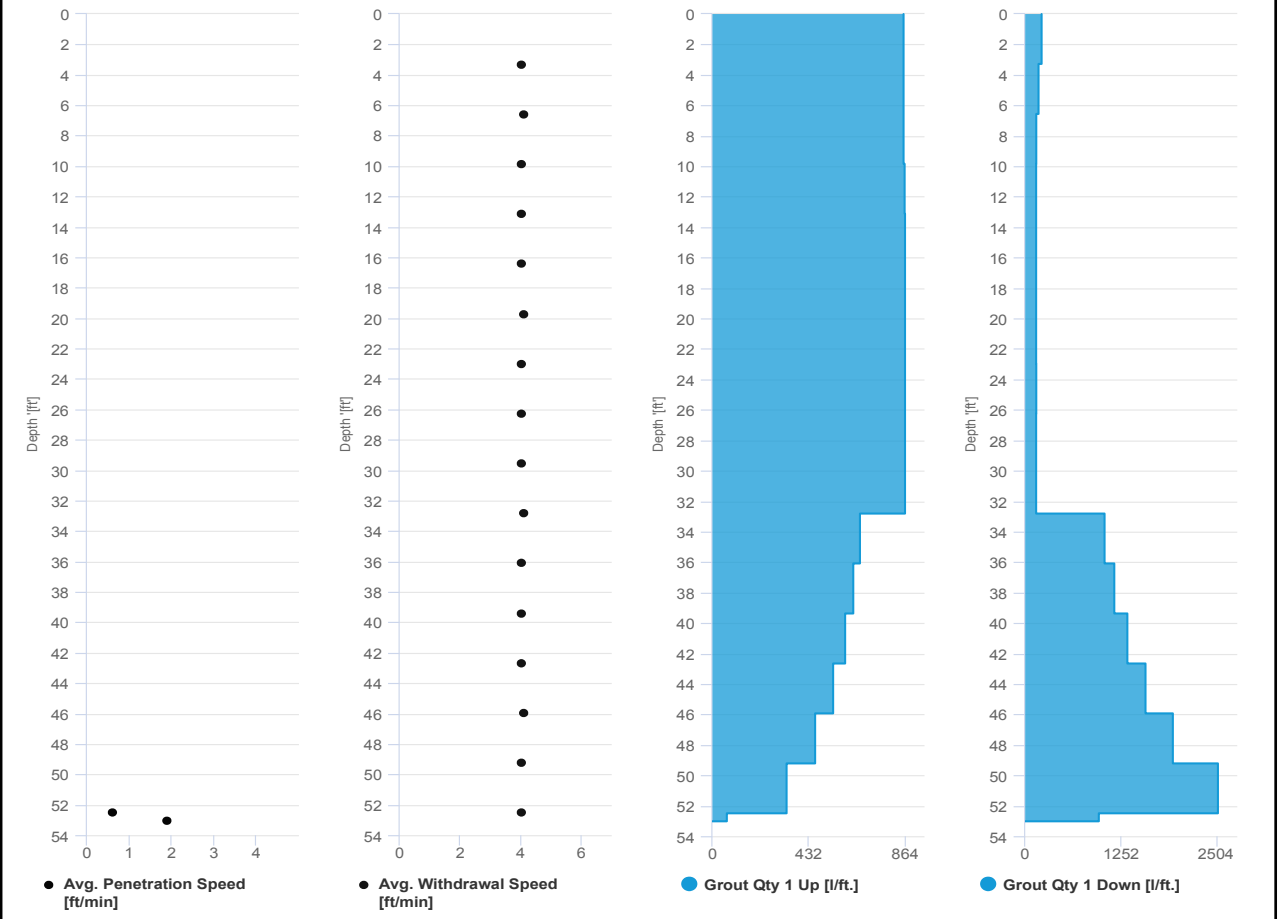


Project name	Douglass Street BCG ISS	Element name	257a2
		Project number	

		Start date	12/11/2024
--	--	------------	------------

Drilling rig	BG36H_5717
--------------	------------

Details		Start time	01:53 PM
Max. depth	53.018 ft.	End Date	12/11/2024
Volume/m 1	12.36 ft ³	End time	02:17 PM
		Production duration	00:24:02
		Final depth time	02:03 PM
		Total suspension quantity	198.186 ft ³



SCM Report



Project name: Douglass Street BCG ISS Element name: 257b
Project number

Start date: 12/11/2024

Drilling rig: BG36H_5717

Details		Start time: 02:17 PM	
Max. depth: 53.051 ft.		End Date: 12/11/2024	
Volume/m 1: 20.483 ft³		End time: 02:57 PM	
		Production duration: 00:39:28	
		Final depth time: 02:43 PM	
		Total suspension quantity: 329.38 ft³	

