

DAILY FIELD REPORT

| | | | |
|-------------------|-------------------------------|--------------------------|-----------------|
| Project | Former A&A Brake Service Site | Report No. | 15 |
| BCP Site | NYSDEC BCP SITE C224372 | Date | 6/19/2023 |
| Location | 558 Sackett Street | File No. | 0206384 |
| Client | Sackett Heights LLC | Temperature | H:79 L: 65 |
| Contractor | STAR Demolition | Wind Direction | SE to NW 12 mph |
| Weather | Sunny | Personnel on Site | Mike Boland |
| Humidity | 58% | Time on Site | 7:00-16:45 |

Haley & Aldrich of New York (Haley & Aldrich) was present to document implementation of the NYSDEC-Approved Remedial Investigation Work Plan (RIWP) dated March 2023. Site observations are summarized below.

Daily Observations:

- Contractor loaded seven (7) loads of C&D debris for transport and disposal to Cooper Recycling Center in Brooklyn, NY.

CAMP Activities:

- Air monitoring was performed at one upwind and one downwind location during demolition activities. No 15-minute average concentration of volatiles organic compounds (VOCs) or particulate 15-minute average concentration of matter smaller than 10 microns in diameter (PM10) exceeded the action levels. No visible dust was observed leaving the site perimeter.

Activities Planned for Coming Week:

- Continued demolition of the site.

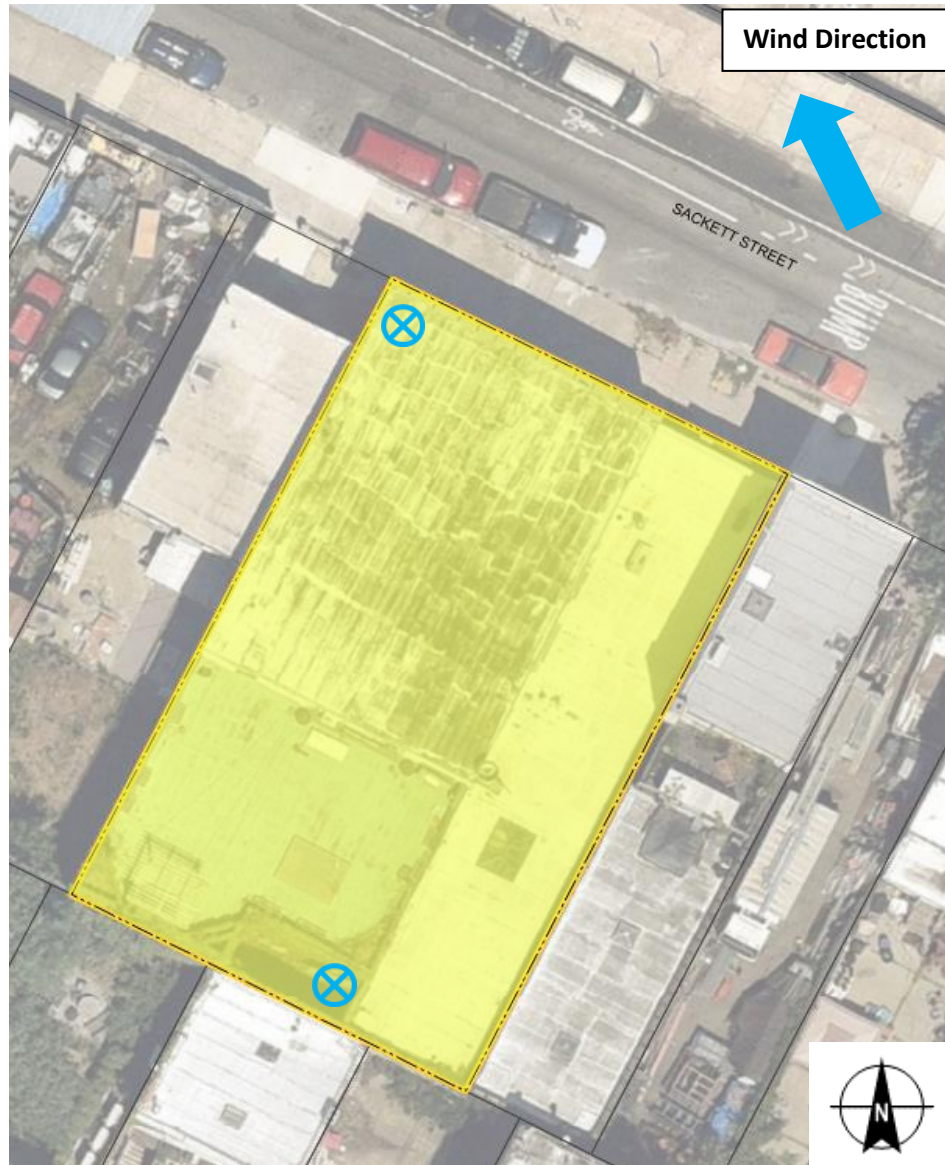
Site Photographs:

Photo 1: View of C&D debris loadout, facing south.



Photo 2: View of site conditions, facing north-northeast.

Site Plan:



LEGEND:

- Area of work
- X CAMP Station

558 Sackett Street, Brooklyn, NY
BCP Site C224372
Air Monitoring Log

Date: 6/19/2023
 Personnel: Mike Boland
 Weather: 65-79 deg F, Sunny
 Humidity: 58%
 Wind Direction: SE to NW 12 mph

Particulate Background (mg/m3): 0.010
 PID Background (ppm): 0

Site Map:



N



| Time | Particulate | | VOCs | | Notes | |
|------|-------------------|---------------------|-----------------|-------------------|-------------|----------------------------------|
| | Upwind (mg/m3) | Downwind (mg/m3) | Upwind (ppm) | Downwind (ppm) | Odors (Y/N) | Activities/Additional Monitoring |
| 630 | | | | | | |
| 645 | | | | | | |
| 700 | | | | | | |
| 715 | 0.010 | 0.012 | 0.0 | 0.0 | N | |
| 730 | 0.041 | 0.021 | 0.0 | 0.0 | N | |
| 745 | 0.038 | 0.058 | 0.0 | 0.0 | N | |
| 800 | 0.018 | 0.023 | 0.0 | 0.0 | N | |
| 815 | 0.026 | 0.062 | 0.0 | 0.0 | N | |
| 830 | 0.026 | 0.036 | 0.0 | 0.0 | N | |
| 845 | 0.034 | 0.025 | 0.0 | 0.1 | N | |
| 900 | 0.029 | 0.023 | 0.0 | 0.0 | N | |
| 915 | 0.026 | 0.040 | 0.0 | 0.0 | N | |
| 930 | 0.021 | 0.017 | 0.0 | 0.0 | N | |
| 945 | 0.055 | 0.066 | 0.1 | 0.0 | N | |
| 1000 | 0.022 | 0.036 | 0.2 | 0.0 | N | |
| 1015 | 0.039 | 0.061 | 0.0 | 0.0 | N | |
| 1030 | 0.023 | 0.059 | 0.0 | 0.0 | N | |
| 1045 | 0.034 | 0.018 | 0.0 | 0.0 | N | |

558 Sackett Street, Brooklyn, NY
BCP Site C224372
Air Monitoring Log

| Time | Particulate | | VOCs | | Notes | |
|------|-------------|----------|--------|----------|-------------|----------------------------------|
| | Upwind | Downwind | Upwind | Downwind | | |
| | (mg/m3) | (mg/m3) | (ppm) | (ppm) | Odors (Y/N) | Activities/Additional Monitoring |
| 1100 | 0.010 | 0.007 | 0.0 | 0.0 | N | |
| 1115 | 0.040 | 0.021 | 0.0 | 0.0 | N | |
| 1130 | 0.063 | 0.004 | 0.0 | 0.0 | N | |
| 1145 | 0.044 | 0.050 | 0.0 | 0.0 | N | |
| 1200 | 0.043 | 0.034 | 0.0 | 0.0 | N | |
| 1215 | 0.046 | 0.050 | 0.0 | 0.0 | N | |
| 1230 | 0.055 | 0.027 | 0.0 | 0.1 | N | |
| 1245 | 0.021 | 0.059 | 0.0 | 0.2 | N | |
| 1300 | 0.005 | 0.019 | 0.0 | 0.0 | N | |
| 1315 | 0.067 | 0.061 | 0.0 | 0.1 | N | |
| 1330 | 0.015 | 0.034 | 0.1 | 0.0 | N | |
| 1345 | 0.069 | 0.045 | 0.0 | 0.0 | N | |
| 1400 | 0.053 | 0.009 | 0.0 | 0.0 | N | |
| 1430 | 0.052 | 0.056 | 0.0 | 0.0 | N | |
| 1445 | 0.024 | 0.051 | 0.0 | 0.0 | N | |
| 1500 | 0.067 | 0.016 | 0.0 | 0.0 | N | |
| 1515 | 0.036 | 0.061 | 0.1 | 0.0 | N | |
| 1530 | 0.038 | 0.033 | 0.0 | 0.0 | N | |
| 1545 | 0.064 | 0.011 | 0.0 | 0.0 | N | |
| 1600 | 0.017 | 0.029 | 0.0 | 0.0 | N | |
| 1615 | 0.016 | 0.037 | 0.0 | 0.0 | N | |
| 1630 | 0.031 | 0.025 | 0.0 | 0.0 | N | |
| 1645 | | | | | | |
| 1700 | | | | | | |
| 1715 | | | | | | |
| 1730 | | | | | | |
| 1745 | | | | | | |
| 1800 | | | | | | |
| 1815 | | | | | | |
| 1830 | | | | | | |
| 1845 | | | | | | |