

DAILY FIELD REPORT

Project	Former A&A Brake Service Site	Report No.	18
BCP Site	NYSDEC BCP SITE C224372	Date	6/23/2023
Location	558 Sackett Street	File No.	0206384
Client	Sackett Heights LLC	Temperature	H:74 L: 65
Contractor	Coastal Environmental Solutions, Inc. (Coastal)	Wind Direction	E to W, 7 mph
Weather	Sunny	Personnel on Site	A. Vaculik, A. Chandra
Humidity	89%	Time on Site	6:30-14:30

Haley & Aldrich of New York (Haley & Aldrich) was present to document implementation of the NYSDEC-Approved Remedial Investigation Work Plan (RIWP) dated March 2023. Site observations are summarized below.

Daily Observations:

- NYSDEC representative Harry August met with Haley & Aldrich personnel at the site.
- Coastal completed installation of one soil boring (SB-8) to 30 feet below grade surface (ft bgs) and soil samples were collected in accordance with the RIWP.
- Coastal completed installation of one soil boring (SB-7) to 100 feet ft bgs, evidence of grossly contaminated material or non-aqueous phase liquid not observed, no additional samples were collected.
- Coastal completed installation of permanent groundwater monitoring well MW-4 to 15 ft bgs.
- Development of monitoring wells.

Samples Collected:

- Soil samples were collected from SB-8 in accordance with the RIWP.
- One Matrix Spike (MS), Matrix Spike Duplicate (MSD), and one trip blank were collected.
- All samples were submitted on ice in a cooler via courier to Alpha Analytical Laboratories, Inc. in Westborough, MA for analyses in accordance with the RIWP.

CAMP Activities:

- Due to inclement weather, visual and olfactory monitoring was implemented from 10:00 AM to 1:30PM. No odor or visible dust was observed leaving the site perimeter.
- Air monitoring was performed at one upwind and one downwind location during ground intrusive activities. A background reading was collected directly in front of the entrance to the residence located to the west of the Site in proximity to the observed air conditioning window units. The upwind air monitoring location was placed adjacent to the air conditioning unit as well. No concentrations of volatiles organic compounds (VOCs) or particulate 15-minute average concentration of matter smaller than 10 microns in diameter (PM10) exceeded the action levels of 0.1 ppm and 150 mcg/m³, respectively, as specified in the "Special Requirements for Work Within 20 Feet of Potentially Exposed Individuals or Structures." No visible dust was observed leaving the site perimeter.

Activities Planned for Coming Week:

- Haley & Aldrich will continue implementing the Remedial Investigation including soil borings, monitoring well installation and soil vapor point installation.

Site Photographs:

Photo 1: Soil from SB-7 from 40-50 ft bgs, facing east.

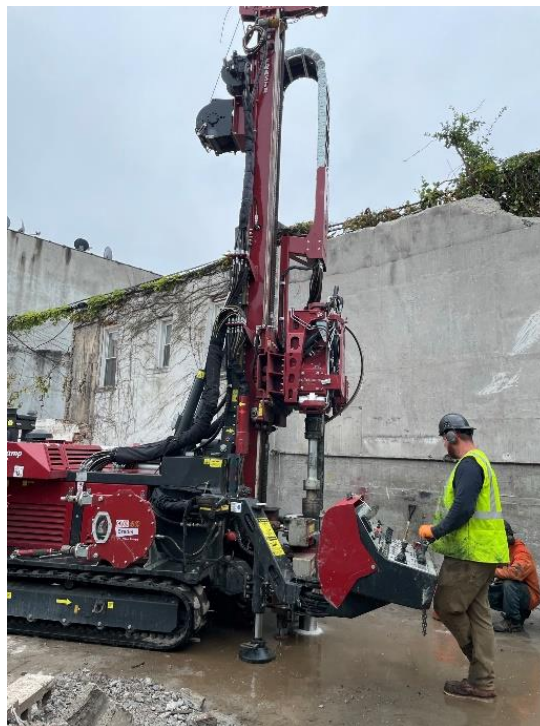


Photo 2: Installation of MW-4, facing southwest.

Site Plan:



LEGEND:

-  CAMP Station
-  In Progress
-  Complete

558 Sackett Street, Brooklyn, NY
BCP Site C224372
Air Monitoring Log

Date:	6/23/2023
Personnel:	A. Vaculik, A. Chandra
Weather:	Cloudy, Rainy
Humidity:	89%
Wind Direction:	E to W, 7 mph

Site Map:



N



	Particulate		VOCs		Notes	
Time	Upwind	Downwind	Upwind	Downwind		
	(mg/m3)	(mg/m3)	(ppm)	(ppm)	Odors (y/n)	Activities/Additional Monitoring
630						
645						
700						
715	0.031	0.027	0.0	0.0	N	
730	0.021	0.018	0.0	0.0	N	
745	0.008	0.012	0.0	0.0	N	
800	0.006	0.014	0.0	0.0	N	
815	DustTrak malfunction possibly due to high humidity	0.011	0.0	0.0	N	
830		0.010	0.0	0.0	N	
845		0.009	0.0	0.0	N	
900		0.011	0.0	0.0	N	
915		0.009	0.0	0.0	N	
930		0.006	0.0	0.0	N	
945		0.005	0.0	0.0	N	
1000	Due to inclement weather, visual and olfactory monitoring conducted					
1015						
1030						
1045						

558 Sackett Street, Brooklyn, NY
BCP Site C224372
Air Monitoring Log

Time	Particulate		VOCs		Notes	
	Upwind	Downwind	Upwind	Downwind		
	(mg/m3)	(mg/m3)	(ppm)	(ppm)	Odors (y/n)	Activities/Additional Monitoring
1100	Due to inclement weather, visual and olfactory monitoring conducted					
1115						
1130						
1145						
1200						
1215						
1230						
1245						
1300						
1315						
1330						
1345						
1400						
1430						
1445						
1500						
1515						
1530						
1545						
1600						
1615						
1630						
1645						
1700						
1715						
1730						
1745						
1800						
1815						
1830						
1845						