

Project	Former A&A Brake Service Site	Report No.	24
BCP Site	NYSDEC BCP SITE C224372	Date	7/5/2023
Location	558 Sackett Street	File No.	0206384
Client	Sackett Heights LLC	Temperature	H:92 L: 72
Contractor	STAR Demolition	Wind Direction	NE to SW 2 mph
Weather	Sunny	Personnel on Site	Annilese Stewart
Humidity	85%	Time on Site	7:30-15:30

Haley & Aldrich of New York (Haley & Aldrich) was present to document implementation of the NYSDEC-Approved Remedial Investigation Work Plan (RIWP) dated March 2023. Site observations are summarized below.

Daily Observations:

- Contractor used hand tools to continue demolition of remaining walls in the south and west.
- Contractor plastered netting on the adjacent building to the east of the site.
- Contractor used excavator to tear wall in south and west.

CAMP Activities:

- Air monitoring was performed at one upwind and one downwind location during demolition activities. The upwind Dustrak experienced a malfunction at 0900. Visual and olfactory monitoring conducted with periodic background checks, using remaining available equipment, performed each hour. No 15-minute average concentration of volatile organic compounds (VOCs) or particulate 15-minute average concentration of matter smaller than 10 microns in diameter (PM10) exceeded action levels. No visible dust was observed leaving the site perimeter.

Activities Planned for Coming Week:

- Continued demolition of the exterior walls of the former building.

Site Photographs:



Photo 1: View of demolition activities, facing south.

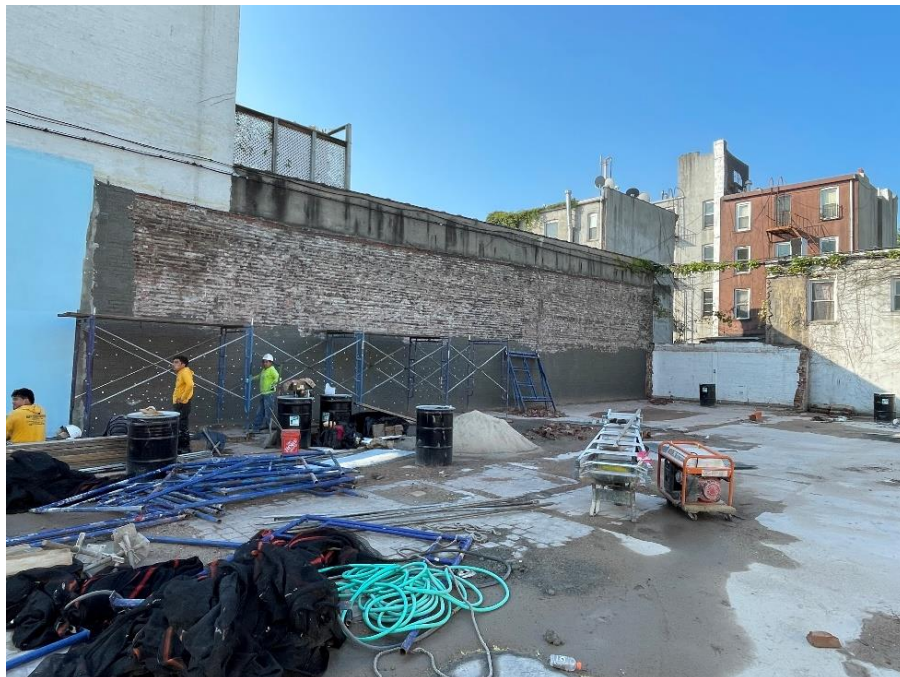
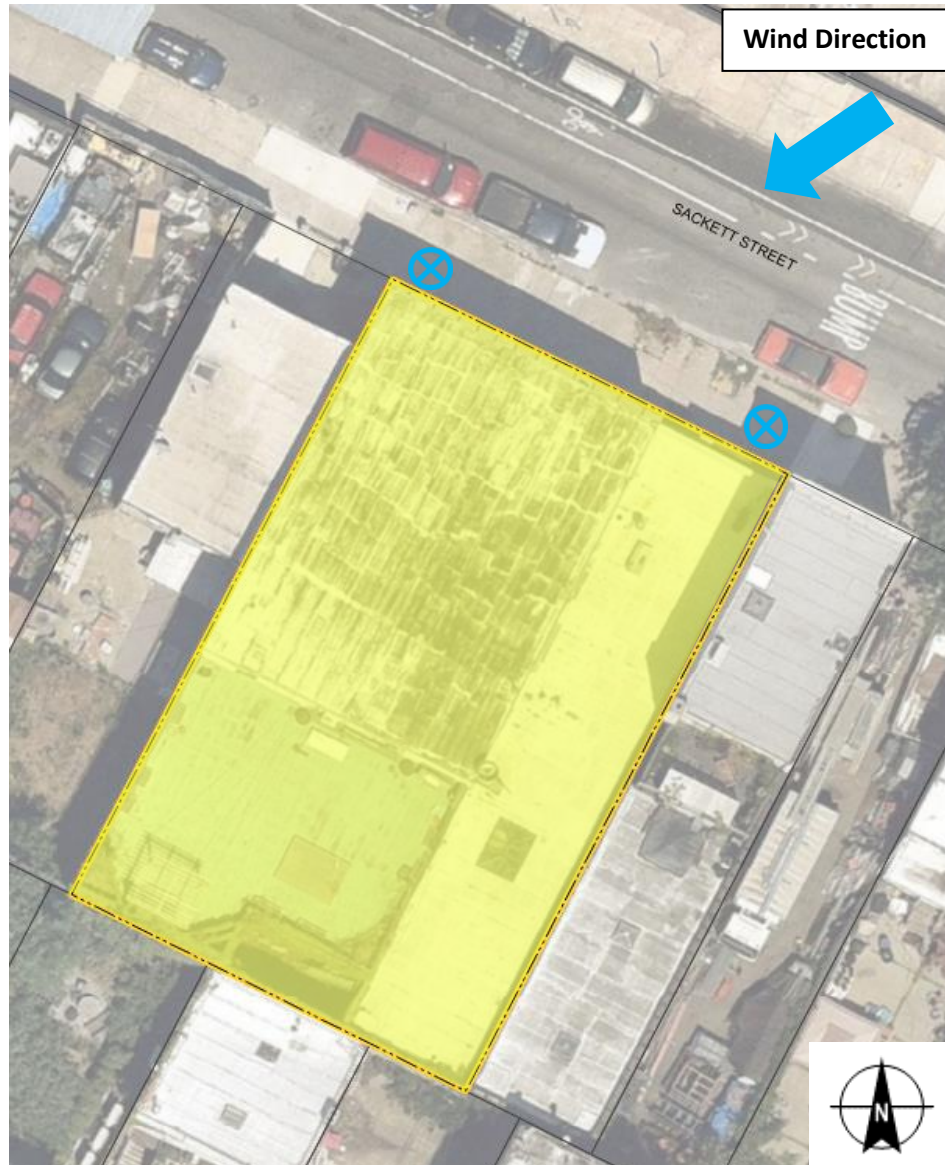


Photo 2: View of contractor plastering wall, facing east-southeast.

Site Plan:



LEGEND:

- Area of work
- X CAMP Station

558 Sackett Street, Brooklyn, NY
BCP Site C224372
Air Monitoring Log

Date: 7/5/2023
 Personnel: A. Stewart
 Weather: Sunny H:92 L:72
 Humidity: 85%
 Wind Direction: NE to SW 2mph

Site Map:



N

Particulate Background (mg/m3): 0.049
 PID Background (ppm): 0



Time	Particulate		VOCs		Notes	
	Upwind (mg/m3)	Downwind (mg/m3)	Upwind (ppm)	Downwind (ppm)	Odors (y/n)	Activities/Additional Monitoring
630						
645						
700						
715						
730						
745						
800	0.049	0.048	0	0	n	
815	0.047	0.049	0	0	n	
830	0.046	0.049	0	0	n	
845	0.037	0.043	0	0	n	
900	0.036	0.042	0	0	n	
915	No visual dust	0.041	0	0.1	n	Upwind DusTtrak malfunction, visual and olfactory monitoring for particulates conducted and periodic checks using available equipment each hour, functional replacement will be available following day
930	No visual dust	0.034	0	0.1	n	
945	No visual dust	0.033	0	0.1	n	
1000	0.037	0.033	0	0.1	n	
1015	No visual dust	0.032	0	0.1	n	
1030	No visual dust	0.031	0	0.1	n	
1045	No visual dust	0.045	0	0.1	n	

558 Sackett Street, Brooklyn, NY
BCP Site C224372
Air Monitoring Log

Time	Particulate		VOCs		Notes	
	Upwind	Downwind	Upwind	Downwind		
	(mg/m3)	(mg/m3)	(ppm)	(ppm)	Odors (y/n)	Activities/Additional Monitoring
1100	0.04	0.053	0	0.1	n	
1115	No visual dust	0.055	0	0.1	n	
1130	No visual dust	0.05	0	0.1	n	
1145	No visual dust	0.052	0	0.1	n	
1200	0.038	0.05	0	0.1	n	
1215	No visual dust	0.051	0	0.1	n	
1230	No visual dust	0.046	0	0.1	n	
1245	No visual dust	0.031	0	0.1	n	
1300	0.041	0.028	0	0.1	n	
1315	No visual dust	0.03	0	0.1	n	
1330	No visual dust	0.035	0	0.1	n	
1345	No visual dust	0.047	0	0.1	n	
1400	0.044	0.066	0	0.1	n	
1430	No visual dust	0.047	0	0.1	n	
1445	No visual dust	0.094	0	0.4	n	
1500	0.05	0.052	0	0.1	n	
1515	No visual dust	0.034	0	0.2	n	
1530	No visual dust	0.038	0	0.1	n	
1545						
1600						
1615						
1630						
1645						
1700						
1715						
1730						
1745						
1800						
1815						
1830						
1845						