

DAILY FIELD REPORT

Project	Former A&A Brake Service Site	Report No.	6
BCP Site	NYSDEC BCP SITE C224372	Date	7/2/2024
Location	558 Sackett Street	File No.	0206384
Client	Sackett Heights LLC	Temperature	H: 85 L: 65
Contractor	Blue Sky Builders	Wind Direction	SE to NW, 6 mph
Weather	Clear	Personnel on Site	G. Poulton
Humidity	49%	Time on Site	6:30am to 4:30pm

H & A of New York Engineering and Geology, LLP (Haley & Aldrich) was present to document implementation of the May 2024 NYSDEC-Approved Remedial Action Work Plan (RAWP) and Decision Document for the Former A&A Brake Service Site C224372, located at 558 Sackett Street, Brooklyn, NY. Site observations are summarized below.

Daily Observations:

- Contractor (Blue Sky) continued demolition activities, including breaking the concrete building slab and stockpiling for disposal.
- Contractor (Blue Sky) began installation of a truck wash pad near the northern site entrance. A polyethylene liner was placed, and a corner sump was installed to remove future runoff water and debris from the pad.
- Brian Jessourian from WSP, arrived on-Site to document field activities on behalf of the NYSDEC. No complaints were noted.

Waste Disposal/Backfill Import Tracking:

Material Export:

- No soil was transported off-site.

Material Import:

- No material was imported to the site.

Samples Collected:

- No samples were collected.

CAMP Activities:

- Air monitoring during ground-intrusive activities was performed at one upwind and one downwind location during ground intrusive work from 7:30 am to 3:30 pm. No 15-minute average concentration of volatiles organic compounds (VOCs) or particulate 15-minute average concentration of matter smaller than 10 microns in diameter (PM10) exceeded the action levels. No visible dust was observed leaving the site perimeter.

Activities Planned for Coming Week:

- Contractor (Blue Sky) will continue concrete slab removal.
- Contractor (Blue Sky) will complete installation of truck pad with clean stone import.
- Contractor (Blue Sky) will begin support of excavation (SOE) installation.

Site Photographs:

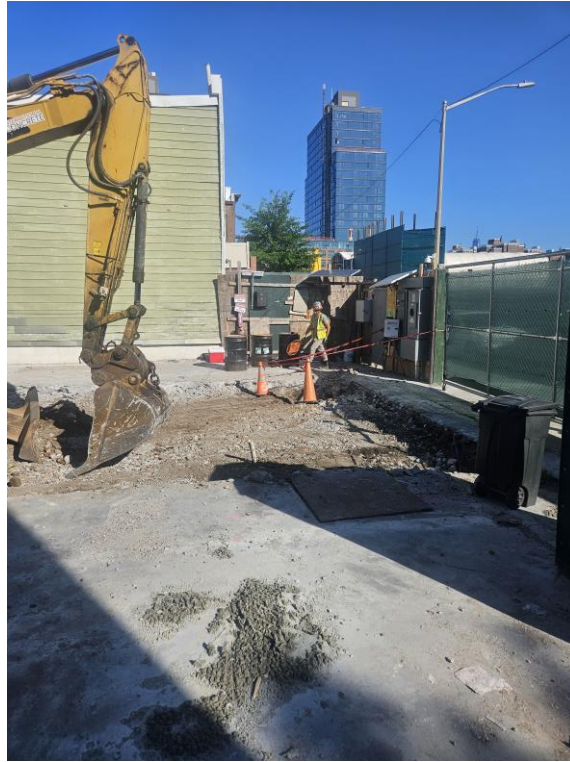
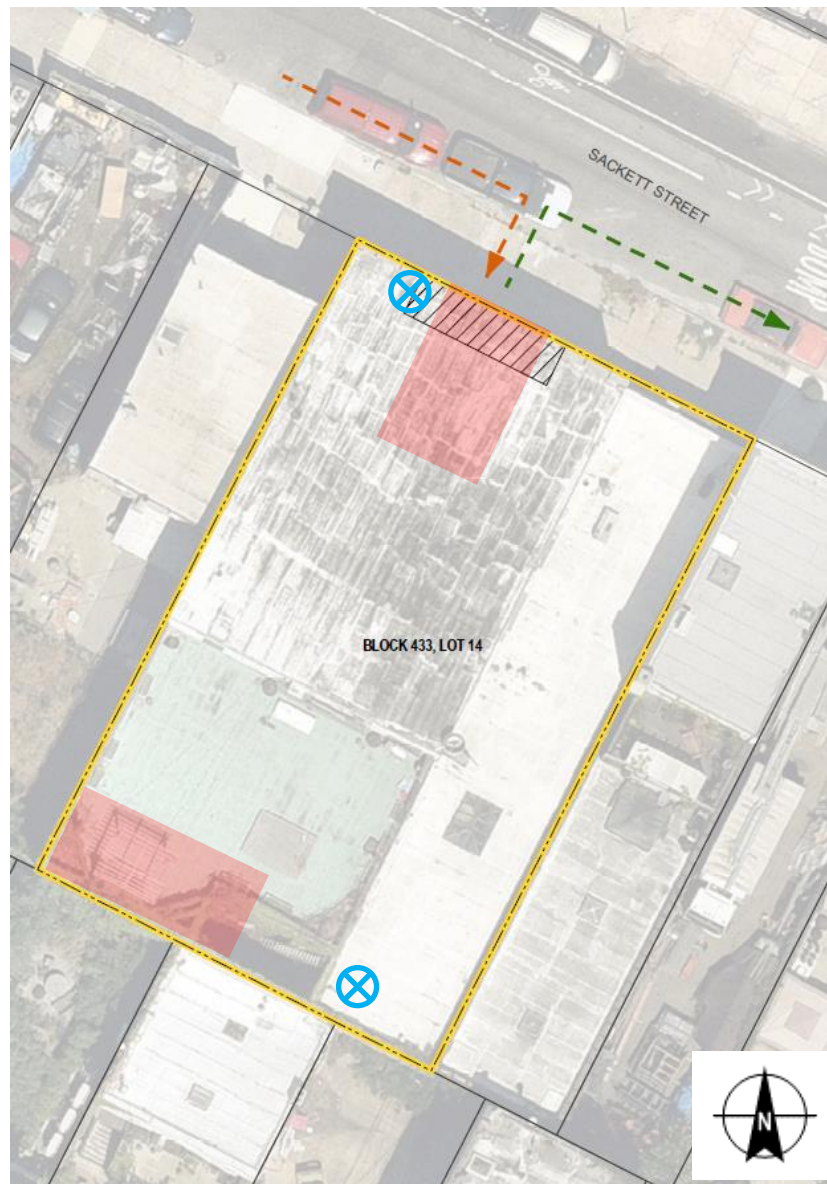


Photo 1: View of concrete slab removal, facing west.



Photo 2: View of truck pad installation with polyethylene sheeting and geotextile fabric, facing west.






Site Plan:



Wind
Direction



LEGEND:

-  CAMP Station
-  Stabilized Truck Entrance and Truck Wash Area
-  Ingress
-  Egress
-  Approximate Work Area

558 Sackett Street, Brooklyn NY

Air Monitoring Log

Date : 2024-07-02

Personnel : G. Poulton
Weather : Clear
Humidity : 49%
Wind Direction : SE to NW, 6 mph

Particulate Background (ug/m3) : 0.012
PID Background (ppm) : 0.0

Action Levels : Downwind perimeter of work area above background levels

PID (ppm) : > 5 ppm for the 15-min average

Dust (ug/m3) : > 150 for the 15-min average

Minute of Time	Avg. PM10 (Station1)	Avg. PM10 (Station2)	Avg. VOC(Station1)	Avg. VOC(Station2)	Odors	Notes Activities/Additional Monitoring
07:30	0.079	0.012	0.0	0.0		
07:45	0.093	0.008	0.0	0.0		
08:00	0.048	0.008	0.0	0.0		
08:15	0.018	0.007	0.0	0.0		
08:30	0.011	0.006	0.0	0.0		
08:45	0.010	0.006	0.0	0.0		
09:00	0.008	0.004	0.0	0.0		
09:15	0.006	0.004	0.0	0.0		
09:30	0.005	0.005	0.0	0.0		
09:45	0.004	0.005	0.0	0.0		
10:00	0.005	0.004	0.0	0.0		
10:15	0.005	0.007	0.0	0.0		
10:30	0.009	0.011	0.0	0.0		
10:45	0.007	0.021	0.0	0.0		

558 Sackett Street, Brooklyn NY

Air Monitoring Log

Minute of Time	Avg. PM10 (Station1)	Avg. PM10 (Station2)	Avg. VOC(Station1)	Avg. VOC(Station2)	Odors	Notes Activities/Additional Monitoring
11:00	0.008	0.019	0.0	0.0		
11:15	0.008	0.013	0.0	0.0		
11:30	0.005	0.005	0.0	0.0		
11:45	0.004	0.007	0.0	0.0		
12:00	0.004	0.005	0.0	0.0		
12:15	0.005	0.004	0.0	0.0		
12:30	0.007	0.005	0.0	0.0		
12:45	0.007	0.008	0.0	0.0		
13:00	0.007	0.007	0.0	0.0		
13:15	0.008	0.007	0.0	0.0		
13:30	0.005	0.008	0.0	0.0		
13:45	0.004	0.005	0.0	0.0		
14:00	0.006	0.009	0.0	0.0		
14:15	0.004	0.014	0.0	0.0		
14:30	0.003	0.016	0.0	0.0		
14:45	0.003	0.008	0.0	0.0		
15:00	0.006	0.018	0.0	0.0		
15:15	0.003	0.008	0.0	0.0		
15:30	0.004	0.004	0.0	0.0		