

DAILY FIELD REPORT

Project	Former A&A Brake Service Site	Report No.	128
BCP Site	NYSDEC BCP SITE C224372	Date	2/21/2025
Location	558 Sackett Street	File No.	0206384
Client	Sackett Heights LLC	Temperature	H: 35 °F L: 23 °F
Contractor	Blue Sky Builders, International Concrete, Silvercup Scaffolding	Wind Direction	NW to SE, up to 26 mph
Weather	Clear	Personnel on Site	George Poulton
Humidity	40%	Time on Site	6:30 am to 3:30 pm

H & A of New York Engineering and Geology, LLP (Haley & Aldrich) was present document implementation of the May 2024 NYSDEC-Approved Remedial Action Work Plan (RAWP) and Decision Document for the Former A&A Brake Service Site C224372, located at 558 Sackett Street, Brooklyn, NY. Site observations are summarized below.

Daily Observations:

- Contractor (Silvercup Scaffolding) constructed scaffolding long the Northern Site boundary.
- Contractor (Blue Sky) installed formwork and rebar for superstructure.
- Chris DiScafani from WSP arrived on-Site to document field activities on behalf of the NYSDEC, no complaints were noted.

Waste Disposal/Backfill Import Tracking:

Material Export:

- None.
- Soil disposal is summarized below:

	Facility: Posillico Materials, Farmingdale, NY (Non-Haz Soil)		Facility: Clean Earth of North Jersey, Kearny, NJ (Haz Soil)		Facility: Clean Earth of North Jersey, Kearny, NJ (Non-Haz Soil)		Facility: Clean Earth of New Castle, New Castle, DE (Non- Haz Soil)		Totals:	
<i>Today:</i>	<u>0 Loads</u>	<u>0 CY</u>	<u>0 Loads</u>	<u>0 CY</u>	<u>0 Load</u>	<u>0 CY</u>	<u>0 Loads</u>	<u>0 CY</u>	<u>0 Loads</u>	<u>0 CY</u>
<i>Total:</i>	<u>33 Loads</u>	<u>660 CY</u>	<u>1 Load</u>	<u>10 CY</u>	<u>1 Load</u>	<u>20 CY</u>	<u>20 Loads</u>	<u>400 CY</u>	<u>55 Loads</u>	<u>1100 CY</u>

*Note, 1 truck estimated at 20 cubic yards. Final tonnages will be presented in the FER

- C&D disposal is summarized below:

	Facility: South Shore Recycling; Staten Island, NY (C&D)		Totals:	
<i>Today:</i>	<u>0 Load</u>	<u>0 CY</u>	<u>0 Load</u>	<u>0 CY</u>
<i>Total:</i>	<u>21 Loads</u>	<u>420 CY</u>	<u>21 Loads</u>	<u>420 CY</u>

Material Import:

- Material import is summarized below:

	<i>Facility: Stavola of Tinton Falls, NJ; Bound Brook Quarry, NJ (1 ½ in Stone)</i>		<i>Facility: Stavola of Tinton Falls, NJ; Bound Brook Quarry, NJ (¾ in Stone)</i>		<i>Totals:</i>	
<i>Today:</i>	<u>0 Loads</u>	<u>0 CY</u>	<u>0 Loads</u>	<u>0 CY</u>	<u>0 Loads</u>	<u>0 CY</u>
<i>Total:</i>	<u>25 Loads</u>	<u>500 CY</u>	<u>23 Load</u>	<u>460 CY</u>	<u>48 Loads</u>	<u>960 CY</u>

**Note, 1 truck estimated at 20 cubic yards. Final tonnages will be presented in the FER.*

Samples Collected:

- None.

CAMP Activities:

- CAMP was not deployed as no intrusive work was conducted at the Site.
- Haley & Aldrich conducted visual dust monitoring. No visible dust was observed leaving the Site perimeter.

Activities Planned for Coming Week:

- Contractor (Blue Sky) will continue work on building superstructure.

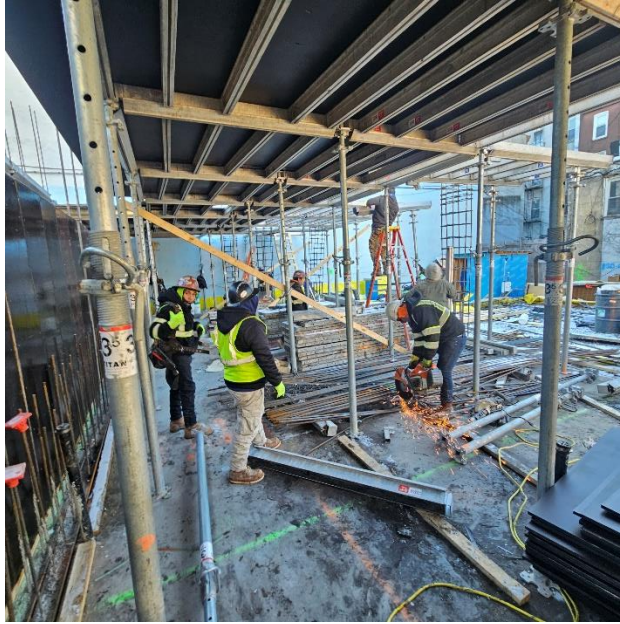
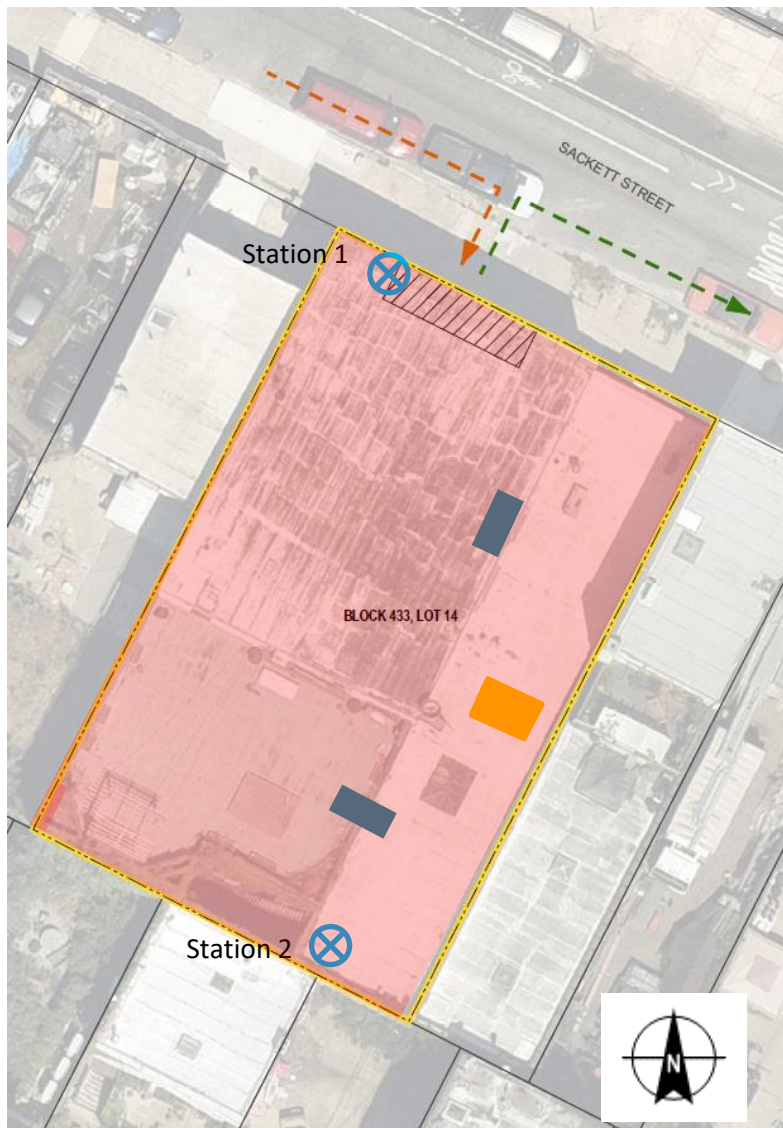
Site Photographs:

Photo 1: View of contractor constructing forms for superstructure, facing East.



Photo 2: View of contractor unloading materials with boom truck, facing West.

Site Plan:



**Wind
Direction**



LEGEND:

-  CAMP Station
-  Stabilized Truck Entrance and Truck Wash Area
-  Ingress
-  Egress
-  Approximate Work Area
-  Approximate UST Location
-  Approximate hydraulic lift Location