

Project	Bedford Beverly Brownfield Site	Report No.	33
BCP Site	BCP Site No. C224384	Date	11/20/2023
Location	2359 and 2360 Bedford Avenue, Brooklyn, NY	File No.	0205432
Client	Bedford Beverly Acquisitions LLC, Star Demolition (Star), Maman Contracting (Maman), International Concrete	Temperature	36-46 °F
Contractor	Haley & Aldrich	Wind Direction	SW to NE, 9 mph
Weather	Mostly Sunny	Personnel on Site	D. Djombalic & E. Nunez
Humidity	64%	Time on Site	6:45am to 3:30pm

Haley & Aldrich of New York (Haley & Aldrich) was present to document implementation of the Remedial Action Work Plan (RAWP) prepared by Haley & Aldrich currently under review by NYSDEC and the NYSDEC-approved Change of Use dated 17 August 2023 to begin support of excavation work. Site observations are summarized below.

Daily Observations:

- Contractor (International Concrete) continued support of excavation (SOE) prep along the perimeter of Lot 14 and stockpiled soil in preparation for disposal.
- Contractor (International Concrete) continued loading C&D material for transport and disposal off-site.
- Contractor (International Concrete) continued loading soil for transport and disposal off-site.

Waste Disposal/Backfill Import Tracking:

Material Export:

- Sixty-seven (67) loads of non-hazardous fill material from grids WC-05_0-5, WC-10_0-5, WC-11_0-5, and WC-12_0-5 were transported offsite.
- Soil/Fill disposal is summarized below:

	<i>Facility: Bayshore Soil Management, Keasbey, NJ (Non-Haz Soil)</i>		<i>Facility: P Park NJ LLC, Prospect Park, NJ (Non-Haz Soil)</i>		<i>Facility: Keystone Trade Center, Fairless Hills, PA (Non-Haz Soil)</i>		<i>Totals:</i>	
<i>Today:</i>	7 Loads	140 CY	43 Loads	860 CY	17 Loads	340 CY	67 Loads	1,340 CY
<i>Total:</i>	<u>125 Loads</u>	<u>2,500 CY</u>	<u>43 Loads</u>	<u>860 CY</u>	<u>17 Loads</u>	<u>340 CY</u>	<u>185 Loads</u>	<u>3,700 CY</u>

*Note, 1 truck estimated at 20 cubic yards. Final tonnages will be present in the Final Engineering Report (FER)

- Asphalt disposal is summarized below:

	<i>Facility: Flushing Asphalt Recycling, Flushing NY (Asphalt)</i>		<i>Facility: Mount Materials, Fairless Hills, PA (Asphalt)</i>		<i>Totals:</i>	
<i>Today:</i>	0 Loads	0 CY	0 Loads	0 CY	0 Loads	0 CY
<i>Total:</i>	<u>117 Loads</u>	<u>2340 CY</u>	<u>9 Loads</u>	<u>180 CY</u>	<u>126 Loads</u>	<u>2520 CY</u>

*Note, 1 truck estimated at 20 cubic yards. Final tonnages will be present in the Final Engineering Report (FER)

- C&D disposal is summarized below:

	<i>Facility: Mount Materials, Fairless Hills, PA (Non-Haz Concrete)</i>		<i>Totals:</i>	
<i>Today:</i>	0 Loads	0 CY	0 Loads	0 CY
<i>Total:</i>	<u>51 Loads</u>	<u>1,020 CY</u>	<u>51 Loads</u>	<u>1,020 CY</u>

*Note, 1 truck estimated at 20 cubic yards. Final tonnages will be present in the Final Engineering Report (FER)

Material Import:

- Material import is summarized below:

	<i>Facility: Mount Hope Quarry, Wharton, NJ (ASTM #57)</i>		<i>Totals:</i>	
<i>Today:</i>	0 Loads	0 CY	0 Loads	0 CY
<i>Total:</i>	<u>3 Loads</u>	<u>60 CY</u>	<u>3 Loads</u>	<u>60 CY</u>

*Note, 1 truck estimated at 20 cubic yards. Final tonnages will be present in the Final Engineering Report (FER)

Samples Collected:

- No samples were collected.

CAMP Activities:

- Air monitoring during ground-intrusive activities was performed at four locations during ground intrusive work from 6:45 am to 3:15 pm. No 15-minute average concentration of volatiles organic compounds (VOCs) or particulate 15-minute average concentration of matter smaller than 10 microns in diameter (PM10) exceeded the action levels. No visible dust was observed leaving the site perimeter.

Activities Planned for Coming Week:

- Contractor (Star) will continue demolition of the former building on Lot 53.
- Contractor (International Concrete) will continue stockpiling soil on the perimeter of Lot 14 for disposal.
- Contractor (International Concrete) will continue installing H piles as part of SOE installation on the perimeter of the site.
- Contractor (International Concrete) will continue transportation and disposal of soil/fill to an approved facility.

Site Photographs:



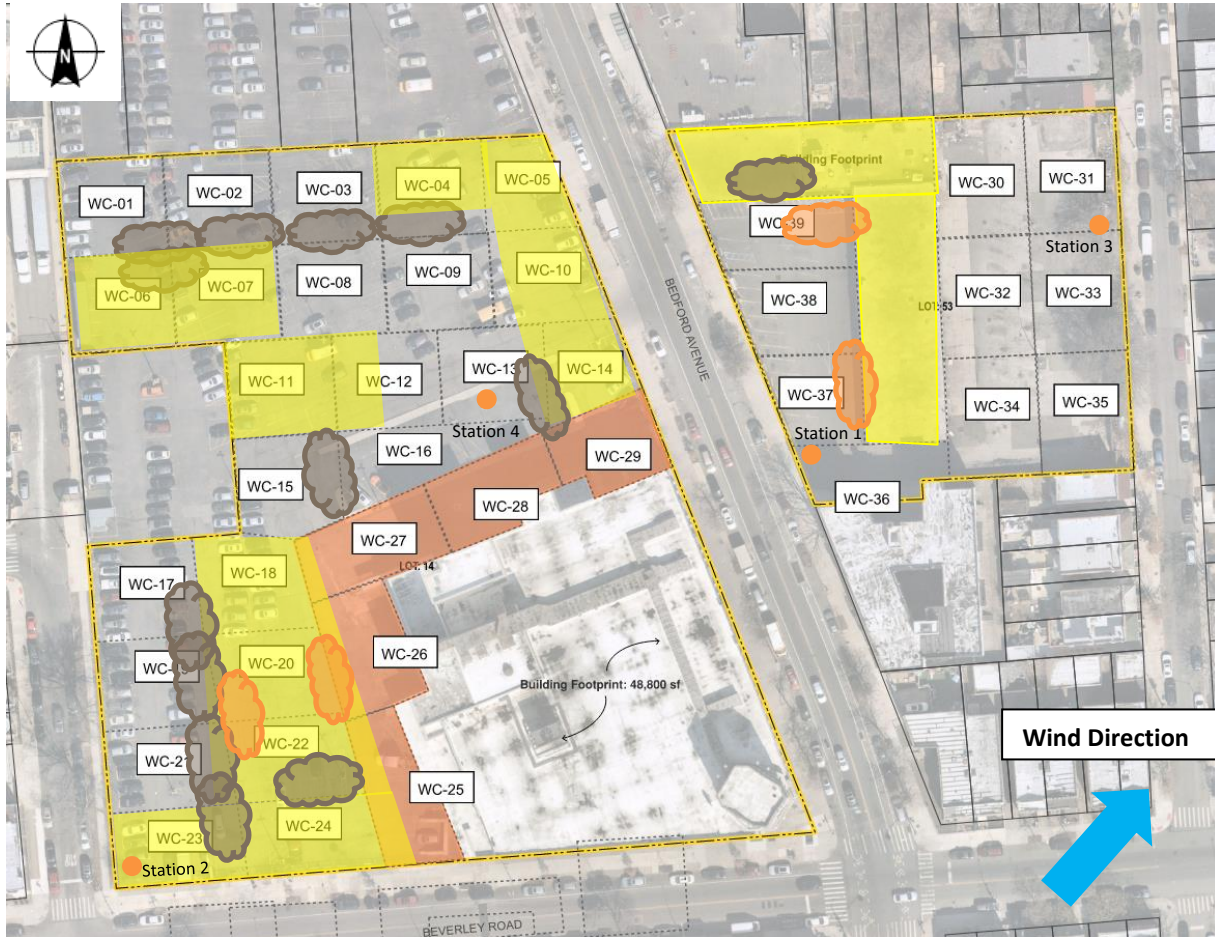
Photo 1: View of contractor loading soil in Lot 14, facing northwest.



Photo 2: View of stabilized truck pad entrance, facing west-northwest.

Site Plan:

Reference: Waste Characterization Letter Figure 3 Grid Location Map, prepared by Haley & Aldrich, dated October 2023



LEGEND:

- Area of work
- CAMP Station
- Stockpile Location (soil/fill)
- Stockpile location (C&D)

2360 Bedford Avenue, Brooklyn NY

Air Monitoring Log

Date : 2023-11-20

Personnel : D. Djombalic & Eddy Nunez

Weather : Mostly Sunny

Humidity : 64%

Wind Direction : SW to NE, 9 mph

Particulate Background (ug/m3) : 19.185

PID Background (ppm) : 0.0

Action Levels : Downwind perimeter of work area above background levels

PID (ppm) : > 5 ppm for the 15-min average

Dust (ug/m3) : > 150 for the 15-min average

Minute of Time	Avg. PM10 (Station1)	Avg. PM10 (Station2)	Avg. PM10 (Station3)	Avg. PM10 (Station4)	Avg. VOC(Station1)	Avg. VOC(Station2)	Avg. VOC(Station3)	Avg. VOC(Station4)	Odors	Notes Activities/ Additional Monitoring
06:45		19.185		7.024				0.0		
07:00		11.008		4.710		0.0		0.0		
07:15		6.149		4.034		0.0		0.0		
07:30		4.691		3.145		0.0		0.0		
07:45		4.000		2.398		0.0		0.0		
08:00		4.600		2.804		0.0		0.0		
08:15		4.366		2.748		0.0		0.0		
08:30		6.174		2.677		0.0		0.0		
08:45		4.090		2.878		0.0		0.0		
09:00	12.034	2.614	13.740	2.468	0.0	0.0	0.0	0.0		
09:15	9.106	3.951	8.235	2.451	0.0	0.0	0.0	0.0		
09:30	7.754	4.109	5.940	3.071	0.0	0.0	0.0	0.0		
09:45	7.749	3.097	4.231	3.045	0.0	0.0	0.0	0.0		
10:00	23.473	4.765	4.069	3.713	0.0	0.0	0.0	0.0		
10:15	19.370	3.862	3.619	4.193	0.0	0.0	0.0	0.0		
10:30	18.709	3.170	3.607	3.502	0.0	0.0	0.0	0.0		
10:45	12.076	3.476	3.337	2.427	0.0	0.0	0.0	0.0		

2360 Bedford Avenue, Brooklyn NY

Air Monitoring Log

Minute of Time	Avg. PM10 (Station1)	Avg. PM10 (Station2)	Avg. PM10 (Station3)	Avg. PM10 (Station4)	Avg. VOC(Station1)	Avg. VOC(Station2)	Avg. VOC(Station3)	Avg. VOC(Station4)	Odors	Notes Activities/ Additional Monitoring
11:00	8.445	2.984	3.353	2.6	0.0	0.0	0.0	0.0		
11:15	9.072	3.511	3.136	2.9	0.0	0.0	0.0	0.0		
11:30	8.090	3.608	3.761	3.7	0.0	0.0	0.0	0.0		
11:45	19.098	5.671	4.016	4.8	0.0	0.0	0.0	0.0		
12:00	6.888	6.218	3.237	4.3	0.0	0.0	0.0	0.0		
12:15	5.374	5.179	2.298	4.7	0.0	0.0	0.0	0.0		
12:30	6.472	4.091	2.401	2.9	0.0	0.0	0.0	0.0		
12:45	6.230	2.928	4.503	4.7	0.0	0.0	0.0	0.0		
13:00	7.130	5.085	2.731	4.3	0.4	0.0	0.0	0.0		
13:15	12.052	2.889	3.850	3.4	0.5	0.0	0.0	0.0		
13:30	5.597	3.013	2.324	4.0	0.3	0.0	0.0	0.0		
13:45	8.905	2.511	3.279	4.9	0.2	0.0	0.0	0.0		
14:00	6.257	2.314	2.044	2.9	0.1	0.0	0.0	0.0		
14:15	4.549	2.590	1.814	7.0	0.1	0.0	0.0	0.0		
14:30	3.654	2.424	1.589	2.1	0.1	0.0	0.0	0.0		
14:45	5.970	3.421	1.692	2.0	0.0	0.0	0.0	0.0		
15:00	4.576	2.388	1.623	1.7	0.0	0.0	0.0	0.0		
15:15				1.8				0.0		