

<b>Project</b>	Bedford Beverly Brownfield Site	<b>Report No.</b>	39
<b>BCP Site</b>	BCP Site No. C224384	<b>Date</b>	11/30/2023
<b>Location</b>	2359 and 2360 Bedford Avenue, Brooklyn, NY	<b>File No.</b>	0205432
<b>Client</b>	Bedford Beverly Acquisitions LLC, Maman Contracting (Maman), International Concrete	<b>Temperature</b>	32-50 °F
<b>Contractor</b>	Haley & Aldrich	<b>Wind Direction</b>	W to E, 7 mph
<b>Weather</b>	Mostly Sunny	<b>Personnel on Site</b>	C. Lorthioir, D. Djombalic & E. Nunez
<b>Humidity</b>	70%	<b>Time on Site</b>	6:45 am to 4:00 pm

Haley & Aldrich of New York (Haley & Aldrich) was present to document implementation of the Remedial Action Work Plan (RAWP) prepared by Haley & Aldrich currently under review by NYSDEC and the NYSDEC-approved Change of Use dated 17 August 2023 to begin support of excavation work. Site observations are summarized below.

**Daily Observations:**

- Contractor (International Concrete) continued support of excavation (SOE) prep along the perimeter of Lot 14 and stockpiled soil in preparation for disposal.
- Contractor (International Concrete) continued loading soil for transport and disposal off-site.

**Waste Disposal/Backfill Import Tracking:**

**Material Export:**

- Soil/Fill disposal is summarized below:

	<i>Facility: Bayshore Soil Management, Keasbey, NJ (Non-Haz Soil)</i>		<i>Facility: P Park NJ LLC, Prospect Park, NJ (Non-Haz Soil)</i>		<i>Facility: Keystone Trade Center, Fairless Hills, PA (Non-Haz Soil)</i>		<i>Totals:</i>	
<i>Today:</i>	0 Loads	0 CY	0 Loads	0 CY	0 Loads	0 CY	0 Loads	0 CY
<i>Total:</i>	<u>154 Loads</u>	<u>3,080 CY</u>	<u>152 Loads</u>	<u>3,040 CY</u>	<u>171 Loads</u>	<u>3,420 CY</u>	<u>477 Loads</u>	<u>9,540 CY</u>

\*Note, 1 truck estimated at 20 cubic yards. Final tonnages will be present in the Final Engineering Report (FER)

- Asphalt disposal is summarized below:

	<i>Facility: Flushing Asphalt Recycling, Flushing NY (Asphalt)</i>		<i>Facility: Mount Materials, Fairless Hills, PA (Asphalt)</i>		<i>Totals:</i>	
<i>Today:</i>	0 Loads	0 CY	0 Loads	0 CY	0 Loads	0 CY
<i>Total:</i>	<u>117 Loads</u>	<u>2,340 CY</u>	<u>9 Loads</u>	<u>180 CY</u>	<u>126 Loads</u>	<u>2,520 CY</u>

\*Note, 1 truck estimated at 20 cubic yards. Final tonnages will be present in the Final Engineering Report (FER)

- C&D disposal is summarized below:

	Facility: Mount Materials, Fairless Hills, PA (Non-Haz Concrete)		Totals:	
<i>Today:</i>	0 Loads	0 CY	0 Loads	0 CY
<i>Total:</i>	<u>51 Loads</u>	<u>1,020 CY</u>	<u>51 Loads</u>	<u>1,020 CY</u>

\*Note, 1 truck estimated at 20 cubic yards. Final tonnages will be present in the Final Engineering Report (FER)

**Material Import:**

- Material import is summarized below:

	Facility: Mount Hope Quarry, Wharton, NJ (ASTM #57)		Facility: Mount Hope Quarry, Wharton, NJ (ASTM #3)		Totals:	
<i>Today:</i>	0 Loads	0 CY	4 loads	80 CY	4 Loads	80 CY
<i>Total:</i>	<u>5 Loads</u>	<u>80 CY</u>	<u>11 loads</u>	<u>220 CY</u>	<u>16 Loads</u>	<u>320 CY</u>

\*Note, 1 truck estimated at 20 cubic yards. Final tonnages will be present in the Final Engineering Report (FER)

**Samples Collected:**

- Confirmation soil samples were collected in the following locations: EP-01, EP-12, EP-13, EP-14, EP-23, EP-24, EP-25, EP-26, EP-35, EP-36, EP-37, EP-38, and EP-46.
- 2 QA/QC samples including two duplicates, two MS/MSD samples, three field blanks, and one trip blank were collected in accordance with the RAWP.
- The soil samples were relinquished to Eurofins Scientific of Edison, New Jersey (a NYSDOH ELAP certified laboratory) under standard chain of custody procedures.

**CAMP Activities:**

- Air monitoring during ground-intrusive activities was performed at two locations during ground intrusive work from 7:15 am to 3:45 pm. No 15-minute average concentration of volatiles organic compounds (VOCs) or particulate 15-minute average concentration of matter smaller than 10 microns in diameter (PM10) exceeded the action levels. No visible dust was observed leaving the site perimeter.

**Activities Planned for Coming Week:**

- Contractor (International Concrete) will continue stockpiling soil on the perimeter of Lot 14 for disposal.
- Contractor (International Concrete) will continue installing H piles as part of SOE installation on the perimeter of the site.
- Contractor (International Concrete) will continue transportation and disposal of soil/fill to an approved facility.

**Site Photographs:**



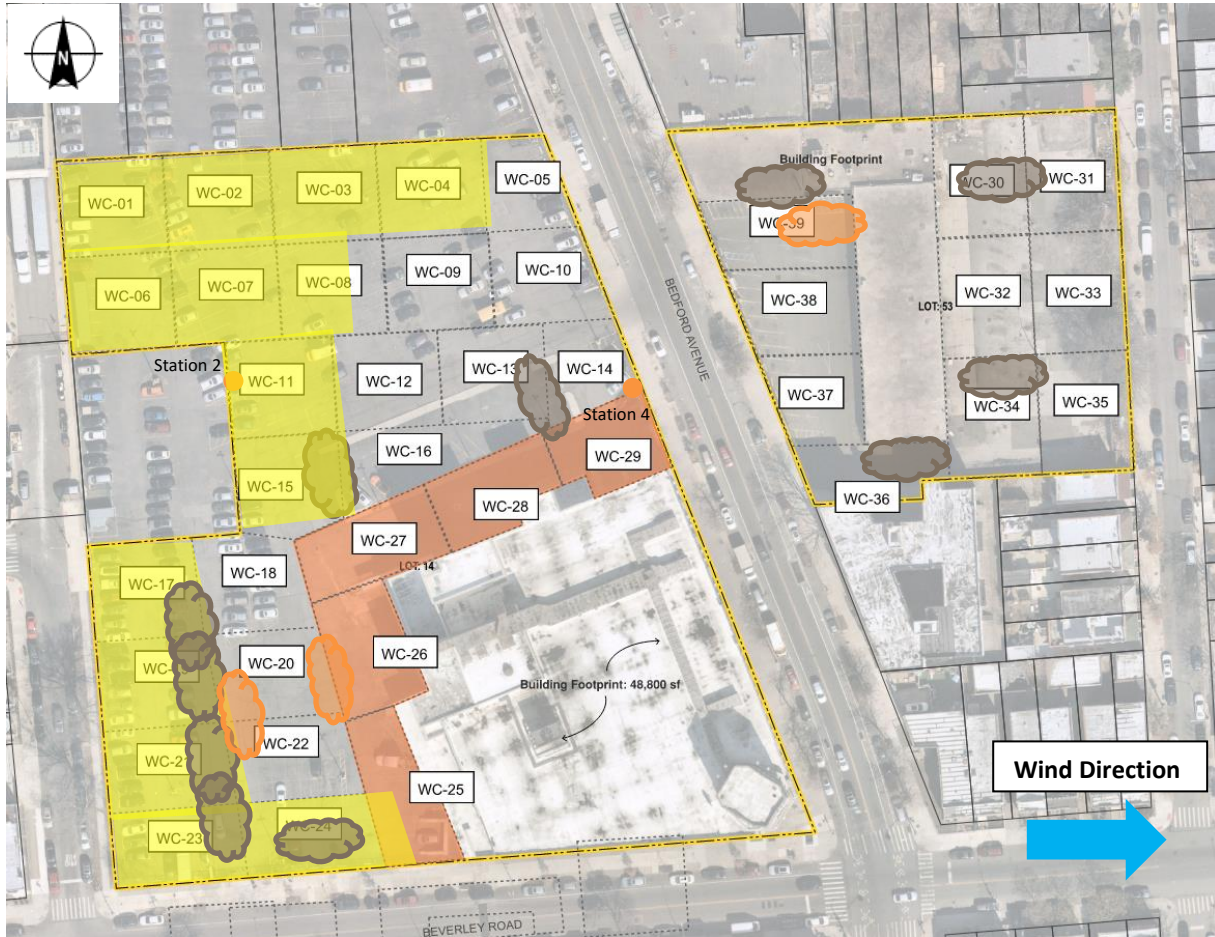
*Photo 1: View of general site conditions of Lot 14, facing northwest.*



*Photo 2: View of contractor welding H piles in Lot 14, facing north-northeast.*

**Site Plan:**

Reference: Waste Characterization Letter Figure 3 Grid Location Map, prepared by Haley & Aldrich, dated October 2023



**LEGEND:**

- Area of work
- CAMP Station
- Stockpile Location (soil/fill)
- Stockpile location (C&D)

2360 Bedford Avenue, Brooklyn NY

Air Monitoring Log

Date : 2023-11-30

Personnel : D. Djombalic, E. Nunez & C. Lorthioir

Weather : Mostly Sunny

Humidity : 70%

Wind Direction : W to E, 7 mph

Particulate Background (ug/m3) : 23.21

PID Background (ppm) : 0.0

Action Levels : Downwind perimeter of work area above background levels

PID (ppm) : > 5 ppm for the 15-min average

Dust (ug/m3) : > 150 for the 15-min average

Minute of Time	Avg. PM10 (Station1)	Avg. PM10 (Station2)	Avg. PM10 (Station3)	Avg. PM10 (Station4)	Avg. VOC(Station1)	Avg. VOC(Station2)	Avg. VOC(Station3)	Avg. VOC(Station4)	Odors	Notes Activities/ Additional Monitoring
07:15		23.210		16.703		0.0		0.0		
07:30		11.000		13.077		0.0		0.0		
07:45		8.897		12.781		0.0		0.0		
08:00		9.051		12.865		0.0		0.0		
08:15		8.767		11.293		0.0		0.0		
08:30		8.795		12.600		0.0		0.0		
08:45		8.699		12.100		0.0		0.0		
09:00		8.221		9.814		0.0		0.0		
09:15		9.161		10.346		0.0		0.0		
09:30		8.956		10.672		0.0		0.0		
09:45		8.072		11.377		0.0		0.0		
10:00		9.197		13.208		0.0		0.0		
10:15		8.011		10.563		0.0		0.0		
10:30		8.657		11.763		0.0		0.0		
10:45		11.893		14.465		0.0		0.0		

2360 Bedford Avenue, Brooklyn NY

Air Monitoring Log

Minute of Time	Avg. PM10 (Station1)	Avg. PM10 (Station2)	Avg. PM10 (Station3)	Avg. PM10 (Station4)	Avg. VOC(Station1)	Avg. VOC(Station2)	Avg. VOC(Station3)	Avg. VOC(Station4)	Odors	Notes Activities/ Additional Monitoring
11:00		9.557		15.5		0.0		0.0		
11:15		9.367		13.8		0.0		0.0		
11:30		9.428		17.8		0.0		0.0		
11:45		8.974		13.1		0.0		0.0		
12:00		9.199		10.2		0.0		0.0		
12:15		9.356		10.3		0.0		0.0		
12:30		9.554		10.6		0.0		0.0		
12:45		9.511		13.9		0.0		0.0		
13:00		9.868		16.9		0.0		0.0		
13:15		9.192		14.5		0.0		0.0		
13:30		9.240		11.9		0.0		0.0		
13:45		9.058		19.1		0.0		0.0		
14:00		9.384		11.5		0.0		0.0		
14:15		10.315		10.3		0.0		0.0		
14:30		9.209		13.5		0.0		0.0		
14:45		9.537		11.8		0.0		0.0		
15:00		9.481		11.9		0.0		0.0		
15:15		9.507		10.9		0.0		0.0		
15:30		9.032				0.0				
15:45		8.151				0.0				