

<b>Project</b>	Bedford Beverly Brownfield Site	<b>Report No.</b>	57
<b>BCP Site</b>	BCP Site No. C224384	<b>Date</b>	12/27/2023
<b>Location</b>	2359 and 2360 Bedford Avenue, Brooklyn, NY	<b>File No.</b>	0205432
<b>Client</b>	Bedford Beverly Acquisitions LLC, Maman Contracting (Maman), International Concrete	<b>Temperature</b>	50-42°F
<b>Contractor</b>	Haley & Aldrich	<b>Wind Direction</b>	NE to SW, 5 mph
<b>Weather</b>	Cloudy	<b>Personnel on Site</b>	E. Nunez, C. Evertz
<b>Humidity</b>	98%	<b>Time on Site</b>	6:30 am to 12:00 pm

Haley & Aldrich of New York (Haley & Aldrich) was present to document implementation of the Remedial Action Work Plan (RAWP) prepared by Haley & Aldrich currently under review by NYSDEC and the NYSDEC-approved Change of Use dated 17 August 2023 to begin support of excavation work. Site observations are summarized below.

**Daily Observations:**

- Contractor (International Concrete) continued support of excavation (SOE) installation along the perimeter of Lots 14 and 53.

**Waste Disposal/Backfill Import Tracking:**

**Material Export:**

- Soil/Fill disposal is summarized below:

	<i>Facility: Bayshore Soil Management, Keasbey, NJ (Non-Haz Soil)</i>		<i>Facility: P Park NJ LLC, Prospect Park, NJ (Non-Haz Soil)</i>		<i>Facility: Keystone Trade Center, Fairless Hills, PA (Non-Haz Soil)</i>		<i>Facility: Posillico Materials Permitted Wash Plant, LLC, Farmingdale, NY (Non-Haz Soil)</i>		<i>Totals:</i>	
<i>Today:</i>	0 Loads	0 CY	0 Loads	0 CY	0 Loads	0 CY	0 Loads	0 CY	0 Loads	0 CY
<i>Total:</i>	<u>212 Loads</u>	<u>4,240 CY</u>	<u>727 Loads</u>	<u>14,540 CY</u>	<u>262 Loads</u>	<u>5,240 CY</u>	<u>97 Loads</u>	<u>1,940 CY</u>	<u>1,298 Loads</u>	<u>25,960 CY</u>

\*Note, 1 truck estimated at 20 cubic yards. Final tonnages will be present in the Final Engineering Report (FER)

- Asphalt disposal is summarized below:

	<i>Facility: Flushing Asphalt Recycling, Flushing NY (Asphalt)</i>		<i>Facility: Mount Materials, Fairless Hills, PA (Asphalt)</i>		<i>Totals:</i>	
<i>Today:</i>	0 Loads	0 CY	0 Loads	0 CY	0 Loads	0 CY
<i>Total:</i>	<u>117 Loads</u>	<u>2,340 CY</u>	<u>21 Loads</u>	<u>420 CY</u>	<u>138 Loads</u>	<u>2,760 CY</u>

\*Note, 1 truck estimated at 20 cubic yards. Final tonnages will be present in the Final Engineering Report (FER)

- C&D disposal is summarized below:

	<i>Facility: Mount Materials, Fairless Hills, PA (Non-Haz Concrete)</i>		<i>Totals:</i>	
<i>Today:</i>	0 Loads	0 CY	0 Loads	0 CY
<i>Total:</i>	<u>83 Loads</u>	<u>1,660 CY</u>	<u>83 Loads</u>	<u>1,660 CY</u>

\*Note, 1 truck estimated at 20 cubic yards. Final tonnages will be present in the Final Engineering Report (FER)

### Material Import:

- Material import is summarized below:

	<i>Facility: Mount Hope Quarry, Wharton, NJ (ASTM #57)</i>		<i>Facility: Mount Hope Quarry, Wharton, NJ (ASTM #3)</i>		<i>Totals:</i>	
<i>Today:</i>	0 Loads	0 CY	0 loads	0 CY	0 Loads	0 CY
<i>Total:</i>	<u>5 Loads</u>	<u>100 CY</u>	<u>15 loads</u>	<u>300 CY</u>	<u>20 Loads</u>	<u>400 CY</u>

\*Note, 1 truck estimated at 20 cubic yards. Final tonnages will be present in the Final Engineering Report (FER)

### Samples Collected:

- No samples taken.

### CAMP Activities:

- Air monitoring during ground-intrusive activities was performed at four locations during ground intrusive work from 6:30 am to 11:00 am. No 15-minute average concentration of volatiles organic compounds (VOCs) or particulate 15-minute average concentration of matter smaller than 10 microns in diameter (PM10) exceeded the action levels. No visible dust was observed leaving the site perimeter.

**Activities Planned for Coming Week:**

- Contractor (International Concrete) will continue stockpiling soil on the perimeter of Lot 14 for disposal.
- Contractor (International Concrete) will begin stockpiling soil on the perimeter of Lot 53 for disposal.
- Contractor (International Concrete) will continue installing H piles as part of SOE installation on the perimeter of the site.
- Contractor (International Concrete) will continue transportation and disposal of soil/fill to an approved facility.

**Site Photographs:**



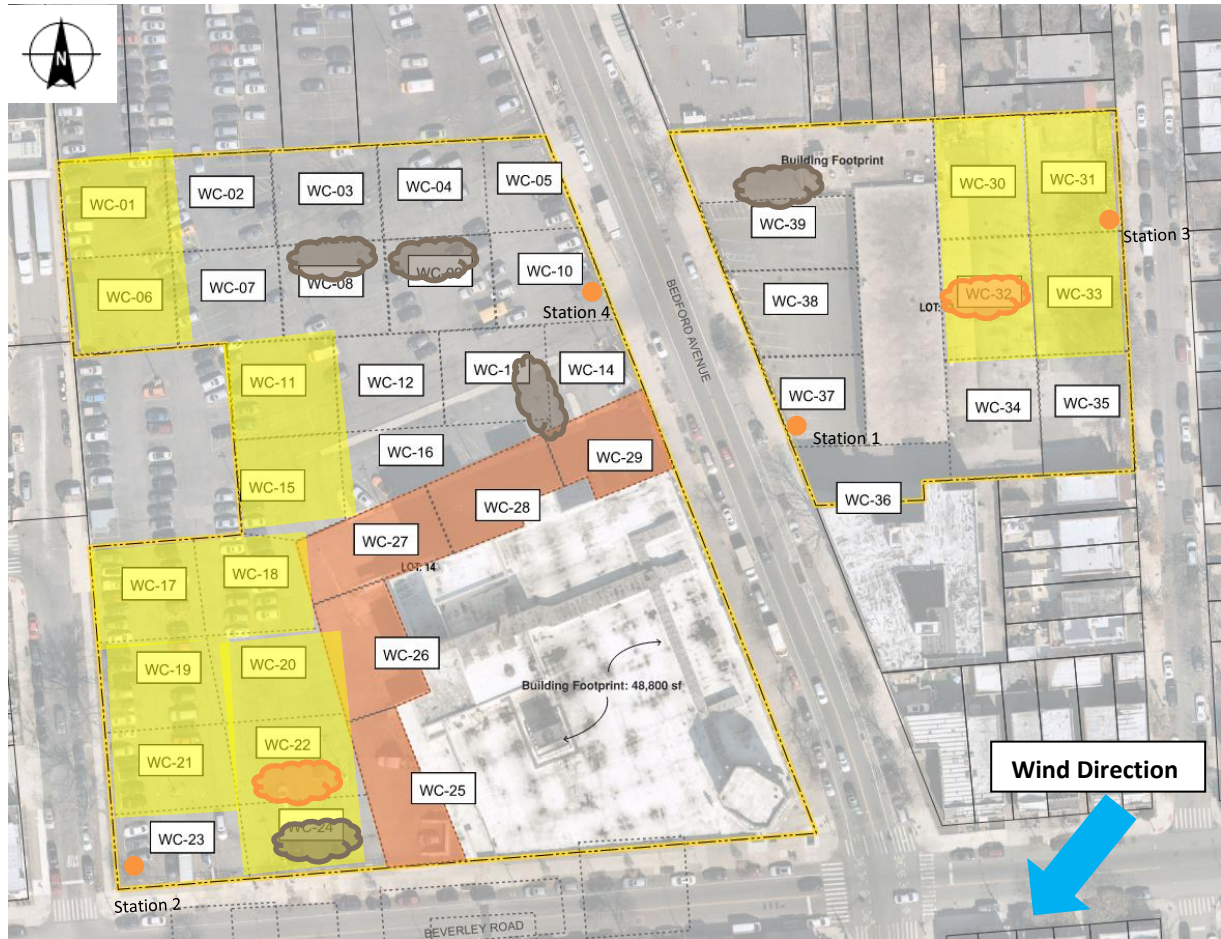
*Photo 1: View of SOE activities on Lot 14, facing north-northwest.*



*Photo 2: View of contractor SOE installation in Lot 14, facing north-north east.*

**Site Plan:**

Reference: Waste Characterization Letter Figure 3 Grid Location Map, prepared by Haley & Aldrich, dated October 2023



**LEGEND:**

- Area of work
- CAMP Station
- Stockpile Location (soil/fill)
- Stockpile location (C&D)

2360 Bedford Avenue, Brooklyn NY

Air Monitoring Log

Date : 2023-12-27

Personnel : D. Djombalic, E. Nunez & C. Evertz  
 Weather : Cloudy  
 Humidity : 98%  
 Wind Direction : NE to SW, 5 mph

Particulate Background (ug/m3) : 65.495  
 PID Background (ppm) : 0.0

Action Levels : Downwind perimeter of work area above background levels  
 PID (ppm) : > 5 ppm for the 15-min average  
 Dust (ug/m3) : > 150 for the 15-min average

Minute of Time	Avg. PM10 (Station1)	Avg. PM10 (Station2)	Avg. PM10 (Station3)	Avg. PM10 (Station4)	Avg. VOC(Station1)	Avg. VOC(Station2)	Avg. VOC(Station3)	Avg. VOC(Station4)	Odors	Notes Activities/ Additional Monitoring
06:45				59.778				0.0		
07:00		37.469		30.946		0.0		0.0		
07:15		34.939		27.233		0.0		0.0		
07:30		35.869		30.750		0.0		0.3		
07:45	69.403	41.932	65.495	34.768	0.0	0.0	0.0	0.0		
08:00	48.093	40.839	44.477	35.857	0.0	0.0	0.0	0.0		
08:15	45.396	41.594	40.884	37.004	0.0	0.0	0.0	0.0		
08:30	42.937	41.218	38.750	36.398	0.0	0.0	0.0	0.0		
08:45	40.191	39.369	42.087	34.862	0.0	0.0	0.0	0.0		
09:00	34.686	34.579	31.420	30.905	0.0	0.0	0.0	0.0		
09:15	20.762	20.865	51.251	18.694	0.0	0.0	0.0	0.0		
09:30	18.545	19.007	16.984	16.488	0.0	0.0	0.0	0.0		
09:45	17.274	17.558	15.362	15.150	0.0	0.0	0.0	0.0		
10:00	15.325	15.969	13.908	13.883	0.0	0.0	0.0	0.0		
10:15	14.009	13.784	12.188	12.330	0.0	0.0	0.0	0.0		
10:30	14.542	14.964	12.942	12.909	0.0	0.0	0.0	0.0		
10:45	13.934	15.187	14.543	12.448	0.0	0.0	0.0	0.0		

2360 Bedford Avenue, Brooklyn NY

Air Monitoring Log

Minute of Time	Avg. PM10 (Station1)	Avg. PM10 (Station2)	Avg. PM10 (Station3)	Avg. PM10 (Station4)	Avg. VOC(Station1)	Avg. VOC(Station2)	Avg. VOC(Station3)	Avg. VOC(Station4)	Odors	Notes Activities/ Additional Monitoring
11:00	13.061	12.630	11.634	11.2	0.0	0.0	0.0	0.0		