

Project	Bedford Beverly Brownfield Site	Report No.	62
BCP Site	BCP Site No. C224384	Date	1/04/2024
Location	2359 and 2360 Bedford Avenue, Brooklyn, NY	File No.	0205432
Client	Bedford Beverly Acquisitions LLC, Maman Contracting (Maman), International Concrete	Temperature	28-43°F
Contractor	Haley & Aldrich	Wind Direction	W to E, 5 mph
Weather	Cloudy	Personnel on Site	E. Nunez, C. Evertz, D. Djombalic
Humidity	79%	Time on Site	6:30 am to 3:15 pm

Haley & Aldrich of New York (Haley & Aldrich) was present to document implementation of the Remedial Action Work Plan (RAWP) prepared by Haley & Aldrich currently under review by NYSDEC and the NYSDEC-approved Change of Use dated 17 August 2023 to begin support of excavation work. Site observations are summarized below.

Daily Observations:

- Contractor (International Concrete) continued support of excavation (SOE) installation along the perimeter of Lots 14 and 53.

Waste Disposal/Backfill Import Tracking:

Material Export:

- Fifty-five (55) loads of non-hazardous fill material from grids WC-36 (0-5).
- Soil/Fill disposal is summarized below:

	<i>Facility: Bayshore Soil Management, Keasbey, NJ (Non-Haz Soil)</i>		<i>Facility: P Park NJ LLC, Prospect Park, NJ (Non-Haz Soil)</i>		<i>Facility: Keystone Trade Center, Fairless Hills, PA (Non-Haz Soil)</i>		<i>Facility: Posillico Materials Permitted Wash Plant, LLC, Farmingdale, NY (Non-Haz Soil)</i>		<i>Totals:</i>	
<i>Today:</i>	0 Loads	0 CY	0 Loads	0 CY	11 Loads	220 CY	44 Loads	880 CY	55 Loads	1,100 CY
<i>Total:</i>	<u>254 Loads</u>	<u>5,080 CY</u>	<u>727 Loads</u>	<u>14,540 CY</u>	<u>291 Loads</u>	<u>5,820 CY</u>	<u>284 Loads</u>	<u>5,680 CY</u>	<u>1,556 Loads</u>	<u>31,120 CY</u>

*Note, 1 truck estimated at 20 cubic yards. Final tonnages will be present in the Final Engineering Report (FER)

- Asphalt disposal is summarized below:

	<i>Facility: Flushing Asphalt Recycling, Flushing NY (Asphalt)</i>		<i>Facility: Mount Materials, Fairless Hills, PA (Asphalt)</i>		<i>Totals:</i>	
<i>Today:</i>	0 Loads	0 CY	10 Loads	200 CY	10 Loads	200 CY
<i>Total:</i>	<u>117 Loads</u>	<u>2,340 CY</u>	<u>37 Loads</u>	<u>740 CY</u>	<u>154 Loads</u>	<u>3,080 CY</u>

*Note, 1 truck estimated at 20 cubic yards. Final tonnages will be present in the Final Engineering Report (FER)

- C&D disposal is summarized below:

	<i>Facility: Mount Materials, Fairless Hills, PA (Non-Haz Concrete)</i>		<i>Totals:</i>	
<i>Today:</i>	0 Loads	0 CY	0 Loads	0 CY
<i>Total:</i>	<u>86 Loads</u>	<u>1,720 CY</u>	<u>86 Loads</u>	<u>1,720 CY</u>

*Note, 1 truck estimated at 20 cubic yards. Final tonnages will be present in the Final Engineering Report (FER)

Material Import:

- Material import is summarized below:

	<i>Facility: Mount Hope Quarry, Wharton, NJ (ASTM #57)</i>		<i>Facility: Mount Hope Quarry, Wharton, NJ (ASTM #3)</i>		<i>Totals:</i>	
<i>Today:</i>	0 Loads	0 CY	0 loads	0 CY	0 Loads	0 CY
<i>Total:</i>	<u>5 Loads</u>	<u>100 CY</u>	<u>15 loads</u>	<u>300 CY</u>	<u>20 Loads</u>	<u>400 CY</u>

*Note, 1 truck estimated at 20 cubic yards. Final tonnages will be present in the Final Engineering Report (FER)

Samples Collected:

- Eight confirmation soil samples were collected in the following locations: EP-28, EP-29, EP-30, EP-31, EP-40, EP-49, EP-58, and EP-67.
- QA/QC samples including one duplicate, one MS/MSD sample, and one trip blank were collected in accordance with the RAWP.
- The soil samples were relinquished to Eurofins Scientific of Edison, New Jersey (a NYSDOH ELAP certified laboratory) under standard chain of custody procedures.

CAMP Activities:

- Air monitoring during ground-intrusive activities was performed at four locations during ground intrusive work from 6:30 am to 2:15 pm. No 15-minute average concentration of volatiles organic compounds (VOCs) or particulate 15-minute average concentration of matter smaller than 10 microns in diameter (PM10) exceeded the action levels. No visible dust was observed leaving the site perimeter.

Activities Planned for Coming Week:

- Contractor (International Concrete) will continue stockpiling soil on the perimeter of Lot 14 for disposal.
- Contractor (International Concrete) will continue stockpiling soil on the perimeter of Lot 53 for disposal.
- Contractor (International Concrete) will continue installing H piles as part of SOE installation on the perimeter of the site.
- Contractor (International Concrete) will continue transportation and disposal of soil/fill to an approved facility.

Site Photographs:



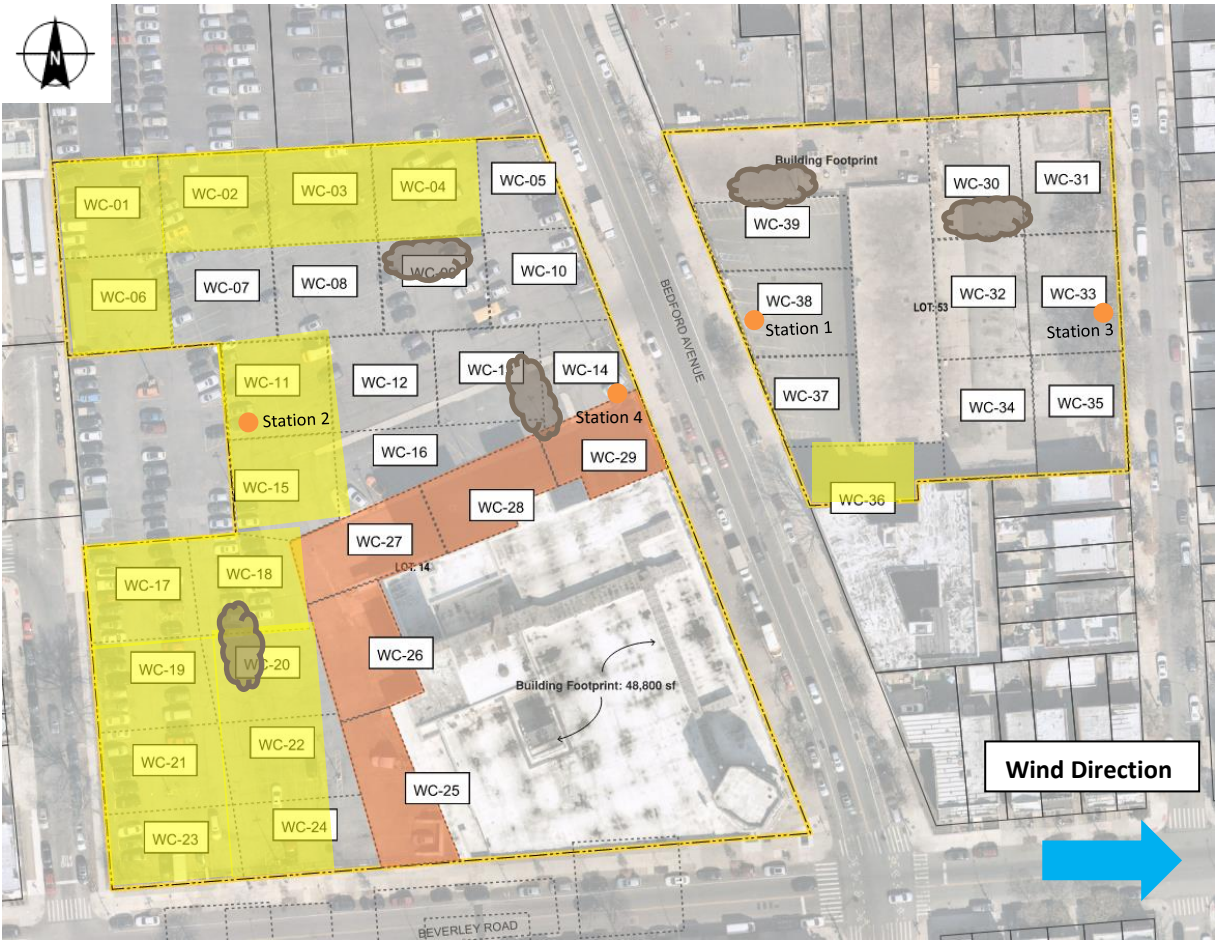
Photo 1: View of soil loading for disposal on Lot 53, facing east.



Photo 2: View of SOE activities in Lot 53, facing southeast.

Site Plan:

Reference: Waste Characterization Letter Figure 3 Grid Location Map, prepared by Haley & Aldrich, dated October 2023



LEGEND:

- Area of work
- CAMP Station
- Stockpile Location (soil/fill)
- Stockpile location (C&D)

2360 Bedford Avenue, Brooklyn NY

Air Monitoring Log

Date : 2024-01-04

Personnel : D. Djombalic, E. Nunez & C. Evertz

Weather : Cloudy

Humidity : 79%

Wind Direction : W to E, 5 mph

Particulate Background (ug/m3) : 13.7

PID Background (ppm) : 0.0

Action Levels : Downwind perimeter of work area above background levels

PID (ppm) : > 5 ppm for the 15-min average

Dust (ug/m3) : > 150 for the 15-min average

Minute of Time	Avg. PM10 (Station1)	Avg. PM10 (Station2)	Avg. PM10 (Station3)	Avg. PM10 (Station4)	Avg. VOC(Station1)	Avg. VOC(Station2)	Avg. VOC(Station3)	Avg. VOC(Station4)	Odors	Notes Activities/ Additional Monitoring
06:30	18.792	20.285	16.655	15.871	0.0	0.0	0.0	0.0		
06:45	14.483	17.053	12.607	12.692	0.0	0.0	0.0	0.0		
07:00	12.802	17.057	11.325	12.066	0.0	0.0	0.0	0.0		
07:15	12.180	16.804	11.232	11.246	0.0	0.0	0.0	0.0		
07:30	11.431	17.352	11.113	10.608	0.0	0.0	0.0	0.0		
07:45	11.310	16.620	12.233	10.312	0.0	0.0	0.0	0.0		
08:00	10.886	15.104	11.145	10.547	0.0	0.0	0.0	0.0		
08:15	11.922	15.450	14.305	11.162	0.0	0.0	0.0	0.0		
08:30	11.592	15.846	13.240	11.116	0.0	0.0	0.0	0.0		
08:45	11.959	18.800	12.249	11.200	0.0	0.0	0.0	0.0		
09:00	12.019	14.610	12.301	11.385	0.0	0.0	0.0	0.0		
09:15	11.927	14.421	11.876	11.991	0.0	0.0	0.0	0.0		
09:30	12.586	15.578	13.006	12.064	0.0	0.0	0.0	0.0		
09:45	13.173	15.589	14.233	12.002	0.0	0.0	0.0	0.0		
10:00	12.652	19.736	12.935	11.616	0.0	0.0	0.0	0.0		
10:15	12.836	18.127	15.124	11.759	0.0	0.0	0.0	0.0		
10:30	11.979	15.360	12.345	10.951	0.0	0.0	0.0	0.0		
10:45	10.430	13.495	8.786	9.676	0.0	0.0	0.0	0.0		

2360 Bedford Avenue, Brooklyn NY

Air Monitoring Log

Minute of Time	Avg. PM10 (Station1)	Avg. PM10 (Station2)	Avg. PM10 (Station3)	Avg. PM10 (Station4)	Avg. VOC(Station1)	Avg. VOC(Station2)	Avg. VOC(Station3)	Avg. VOC(Station4)	Odors	Notes Activities/ Additional Monitoring
11:00	9.809	12.765	8.252	9.2	0.0	0.0	0.0	0.0		
11:15	10.673	12.782	9.822	9.1	0.0	0.0	0.0	0.0		
11:30	9.944	11.155	9.512	8.7	0.0	0.0	0.0	0.0		
11:45	8.879	10.526	8.148	8.1	0.0	0.0	0.0	0.0		
12:00	7.256	9.370	7.803	6.6	0.0	0.0	0.0	0.0		
12:15	6.792	6.901	4.898	5.2	0.0	0.0	0.0	0.0		
12:30	5.722	6.426	6.381	4.9	0.0	0.0	0.0	0.0		
12:45	5.404	8.367	4.059	4.4	0.0	0.0	0.0	0.0		
13:00	5.080	7.990	5.261	4.5	0.0	0.0	0.0	0.0		
13:15	5.934	8.096	3.546	3.7	0.0	0.0	0.0	0.0		
13:30	5.043	6.272	2.739	2.7	0.0	0.0	0.0	0.0		
13:45	2.686	5.616	3.317	2.5	0.0	0.0	0.0	0.0		
14:00	3.053	4.373	2.424	3.9	0.0	0.0	0.0	0.0		
14:15	2.633		2.189		0.0		0.0			