

Project	Bedford Beverly Brownfield Site	Report No.	70
BCP Site	BCP Site No. C224384	Date	1/16/2024
Location	2359 and 2360 Bedford Avenue, Brooklyn, NY	File No.	0205432
Client	Bedford Beverly Acquisitions LLC, Maman Contracting (Maman), International Concrete	Temperature	23-31°F
Contractor	Haley & Aldrich	Wind Direction	NE to SW, 8 mph
Weather	Snow/Rain	Personnel on Site	E. Nunez, A. Stewart, D. Djombalic
Humidity	97%	Time on Site	6:30 am to 3:30 pm

Haley & Aldrich of New York (Haley & Aldrich) was present to document implementation of the Remedial Action Work Plan (RAWP) prepared by Haley & Aldrich currently under review by NYSDEC and the NYSDEC-approved Change of Use dated 17 August 2023 to begin support of excavation work. Site observations are summarized below.

Daily Observations:

- Contractor (International Concrete) continued support of excavation (SOE) installation along the perimeter of Lots 14 and 53.

Waste Disposal/Backfill Import Tracking:

Material Export:

- 74 loads of non-hazardous fill material from grids WC-20(0-5), WC-22(0-5), WC-20(5-10), WC-22(5-10), WC-20(10-15), WC-22(10-15), WC-12(0-5)
- Soil/Fill disposal is summarized below:

	<i>Facility: Bayshore Soil Management, Keasbey, NJ (Non-Haz Soil)</i>		<i>Facility: P Park NJ LLC, Prospect Park, NJ (Non-Haz Soil)</i>		<i>Facility: Keystone Trade Center, Fairless Hills, PA (Non-Haz Soil)</i>	
<i>Today:</i>	14 Loads	280 CY	60 Loads	1200 CY	0 Loads	0 CY
<i>Total:</i>	<u>268 Loads</u>	<u>5,360 CY</u>	<u>860 Loads</u>	<u>17,200 CY</u>	<u>502 Loads</u>	<u>10,040 CY</u>
	<i>Facility: Posillico Materials Permitted Wash Plant, LLC, Farmingdale, NY (Non-Haz Soil)</i>		<i>Facility: Republic Environmental Systems, LLC, Hatfield PA (Haz waste)</i>		<i>Facility: Conestoga Republic Environmental Systems, LLC, Prospect Park, NJ (Non-Haz Soil)</i>	
<i>Today:</i>	0 Loads	0 CY	0 Loads	0 CY	0 Loads	0 CY
<i>Total:</i>	<u>487 Loads</u>	<u>9,740 CY</u>	<u>5 Loads</u>	<u>100 CY</u>	<u>44 Loads</u>	<u>880 CY</u>
Sitewide Total						
<i>Today:</i>	74 Loads	1,480 CY				
<i>Total:</i>	<u>2,166 Loads</u>	43,320 CY				

*Note, 1 truck estimated at 20 cubic yards. Final tonnages will be present in the Final Engineering Report (FER)

- Asphalt disposal is summarized below:

	<i>Facility: Flushing Asphalt Recycling, Flushing NY (Asphalt)</i>		<i>Facility: Mount Materials, Fairless Hills, PA (Asphalt)</i>		<i>Totals:</i>	
<i>Today:</i>	0 Loads	0 CY	0 Loads	0 CY	0 Loads	0 CY
<i>Total:</i>	<u>117 Loads</u>	<u>2,340 CY</u>	<u>38 Loads</u>	<u>760 CY</u>	<u>155 Loads</u>	<u>3,100 CY</u>

*Note, 1 truck estimated at 20 cubic yards. Final tonnages will be present in the Final Engineering Report (FER)

- C&D disposal is summarized below:

	<i>Facility: Mount Materials, Fairless Hills, PA (Non-Haz Concrete)</i>		<i>Totals:</i>	
<i>Today:</i>	0 Loads	0 CY	0 Loads	0 CY
<i>Total:</i>	<u>86 Loads</u>	<u>1,720 CY</u>	<u>86 Loads</u>	<u>1,720 CY</u>

*Note, 1 truck estimated at 20 cubic yards. Final tonnages will be present in the Final Engineering Report (FER)

Material Import:

- Material import is summarized below:

	<i>Facility: Mount Hope Quarry, Wharton, NJ (ASTM #57)</i>		<i>Facility: Mount Hope Quarry, Wharton, NJ (ASTM #3)</i>		<i>Totals:</i>	
<i>Today:</i>	0 Loads	0 CY	0 load	0 CY	0 Loads	0 CY
<i>Total:</i>	<u>5 Loads</u>	<u>100 CY</u>	<u>18 loads</u>	<u>340 CY</u>	<u>23 Loads</u>	<u>441 CY</u>

*Note, 1 truck estimated at 20 cubic yards. Final tonnages will be present in the Final Engineering Report (FER)

Samples Collected:

- No samples collected.

CAMP Activities:

- Due to snowy/rainy conditions, visual and olfactory monitoring was conducted throughout the day. No visible dust was observed leaving the site perimeter.

Activities Planned for Coming Week:

- Contractor (International Concrete) will continue stockpiling soil on the perimeter of Lot 14 for disposal.
- Contractor (International Concrete) will continue stockpiling soil on the perimeter of Lot 53 for disposal.
- Contractor (International Concrete) will continue installing H piles as part of SOE installation on the perimeter of the site.
- Contractor (International Concrete) will continue transportation and disposal of soil/fill to an approved facility.

Site Photographs:



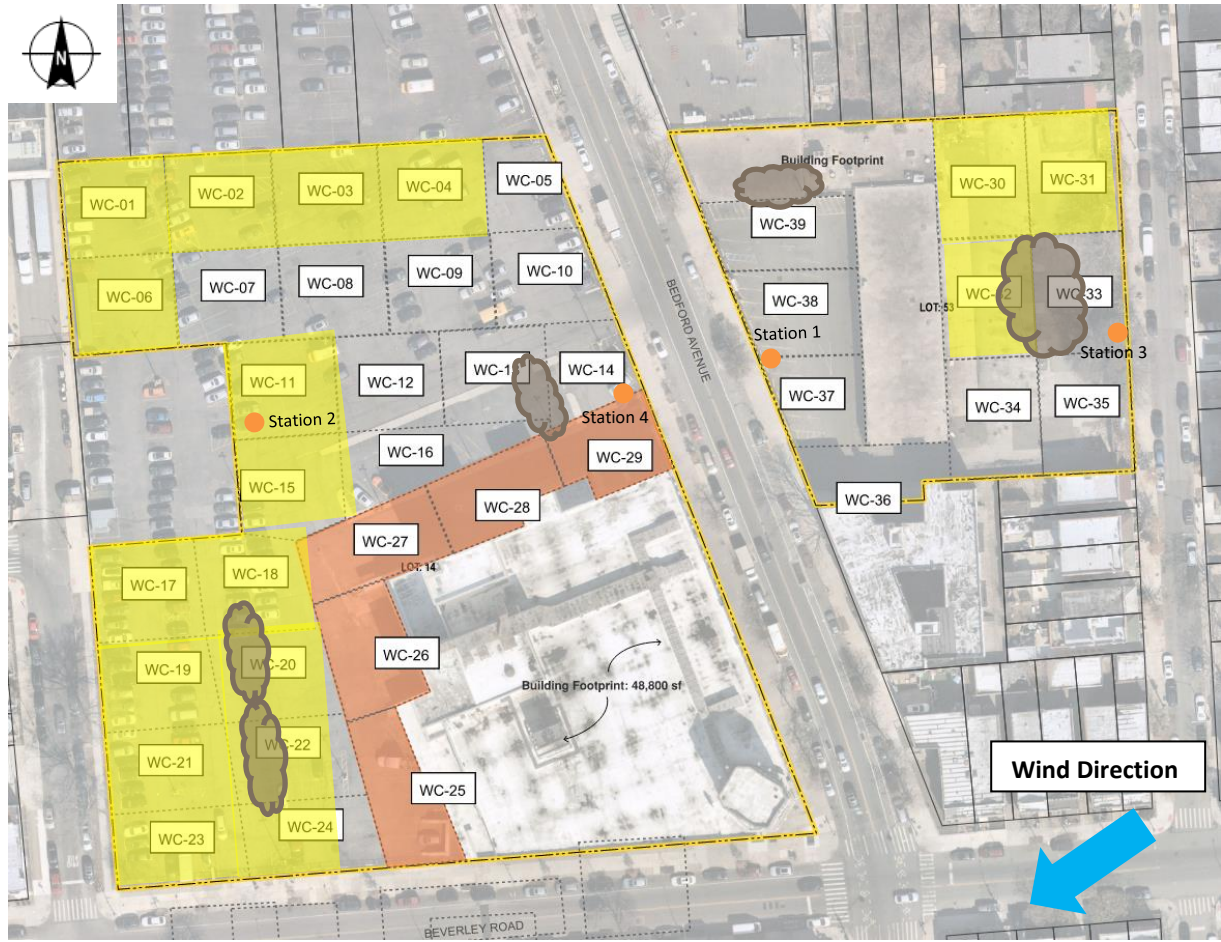
Photo 1: View of soil disposal in Lot 14, facing southwest.



Photo 2: View of SOE Installation in Lot 14, facing west.

Site Plan:

Reference: Waste Characterization Letter Figure 3 Grid Location Map, prepared by Haley & Aldrich, dated October 2023



LEGEND:

- Area of work
- CAMP Station
- Stockpile Location (soil/fill)
- Stockpile location (C&D)