

<b>Project</b>	Bedford Beverly Brownfield Site	<b>Report No.</b>	77
<b>BCP Site</b>	BCP Site No. C224384	<b>Date</b>	1/25/2024
<b>Location</b>	2359 and 2360 Bedford Avenue, Brooklyn, NY	<b>File No.</b>	0205432
<b>Client</b>	Bedford Beverly Acquisitions LLC, Maman Contracting (Maman), International Concrete	<b>Temperature</b>	46-51°F
<b>Contractor</b>	Haley & Aldrich	<b>Wind Direction</b>	WSW to ENE, 5 mph
<b>Weather</b>	Rain	<b>Personnel on Site</b>	D. Djombalic, A. Stewart, & N. Mooney
<b>Humidity</b>	95%	<b>Time on Site</b>	6:30 am to 3:30 pm

Haley & Aldrich of New York Engineering and Geology, LLP (Haley & Aldrich) was present to document implementation of the Remedial Action Work Plan (RAWP) prepared by Haley & Aldrich currently under review by NYSDEC and the NYSDEC-approved Change of Use dated 17 August 2023 to begin support of excavation work. Site observations are summarized below.

**Daily Observations:**

- Contractor (International Concrete) continued support of excavation (SOE) installation along the perimeter of Lots 14 and 53.

**Waste Disposal/Backfill Import Tracking:**

**Material Export:**

- Soil/Fill disposal is summarized below:

	<i>Facility: Bayshore Soil Management, Keasbey, NJ (Non-Haz Soil)</i>		<i>Facility: P Park NJ LLC, Prospect Park, NJ (Non-Haz Soil)</i>		<i>Facility: Keystone Trade Center, Fairless Hills, PA (Non-Haz Soil)</i>	
<i>Today:</i>	0 Loads	0 CY	37 Loads	740 CY	15 Loads	300 CY
<i>Total:</i>	<u>334 Loads</u>	<u>6,680 CY</u>	<u>1,047 Loads</u>	<u>20,940 CY</u>	<u>630 Loads</u>	<u>12,600 CY</u>
	<i>Facility: Posillico Materials Permitted Wash Plant, LLC, Farmingdale, NY (Non-Haz Soil)</i>		<i>Facility: Republic Environmental Systems, LLC, Hatfield PA (Haz Soil)</i>		<i>Facility: Conestoga Republic Environmental Systems, LLC, Prospect Park, NJ (Non-Haz Soil)</i>	
<i>Today:</i>	0 Loads	0 CY	0 Loads	0 CY	0 Loads	0 CY
<i>Total:</i>	<u>479 Loads</u>	<u>9,580 CY</u>	<u>5 Loads</u>	<u>100 CY</u>	<u>44 Loads</u>	<u>880 CY</u>
<b>Sitewide Total</b>						
<i>Today:</i>	52 Loads	1,040 CY				
<i>Total:</i>	<u>2,630 Loads</u>	<u>53,140 CY</u>				

\*Note, 1 truck estimated at 20 cubic yards. Final tonnages will be present in the Final Engineering Report (FER)

- Asphalt disposal is summarized below:

	Facility: Flushing Asphalt Recycling, Flushing NY (Asphalt)		Facility: Mount Materials, Fairless Hills, PA (Asphalt)		Totals:	
Today:	0 Loads	0 CY	5 Loads	100 CY	5 Loads	100 CY
Total:	<u>117 Loads</u>	<u>2,340 CY</u>	<u>43 Loads</u>	<u>860 CY</u>	<u>160 Loads</u>	<u>3,200 CY</u>

\*Note, 1 truck estimated at 20 cubic yards. Final tonnages will be present in the Final Engineering Report (FER)

- C&D disposal is summarized below:

	Facility: Mount Materials, Fairless Hills, PA (Non-Haz Concrete)		Totals:	
Today:	0 Loads	0 CY	0 Loads	0 CY
Total:	<u>87 Loads</u>	<u>1,740 CY</u>	<u>87 Loads</u>	<u>1,740 CY</u>

\*Note, 1 truck estimated at 20 cubic yards. Final tonnages will be present in the Final Engineering Report (FER)

### Material Import:

- Material import is summarized below:

	Facility: Mount Hope Quarry, Wharton, NJ (ASTM #57)		Facility: Mount Hope Quarry, Wharton, NJ (ASTM #3)		Totals:	
Today:	0 Loads	0 CY	0 loads	0 CY	0 Loads	0 CY
Total:	<u>5 Loads</u>	<u>100 CY</u>	<u>21 loads</u>	<u>400 CY</u>	<u>26 Loads</u>	<u>501 CY</u>

\*Note, 1 truck estimated at 20 cubic yards. Final tonnages will be present in the Final Engineering Report (FER)

### Samples Collected:

- No soil samples were collected.

### CAMP Activities:

- Due to rainy conditions, visual and olfactory monitoring was conducted from 7:00 am to 11:15 am. No visible dust was observed leaving the site perimeter.
- Air monitoring during ground-intrusive activities was performed at two locations during ground intrusive work from 11:30 am to 3:00 pm. No 15-minute average concentration of volatiles organic compounds (VOCs) or particulate 15-minute average concentration of matter smaller than 10 microns in diameter (PM10) exceeded the action levels. No visible dust was observed leaving the site perimeter.

**Activities Planned for Coming Week:**

- Contractor (International Concrete) will continue stockpiling soil on the perimeter of Lot 14 for disposal.
- Contractor (International Concrete) will continue stockpiling soil on the perimeter of Lot 53 for disposal.
- Contractor (International Concrete) will continue installing H piles as part of SOE installation on the perimeter of the site.
- Contractor (International Concrete) will continue transportation and disposal of soil/fill to an approved facility.

**Site Photographs:**



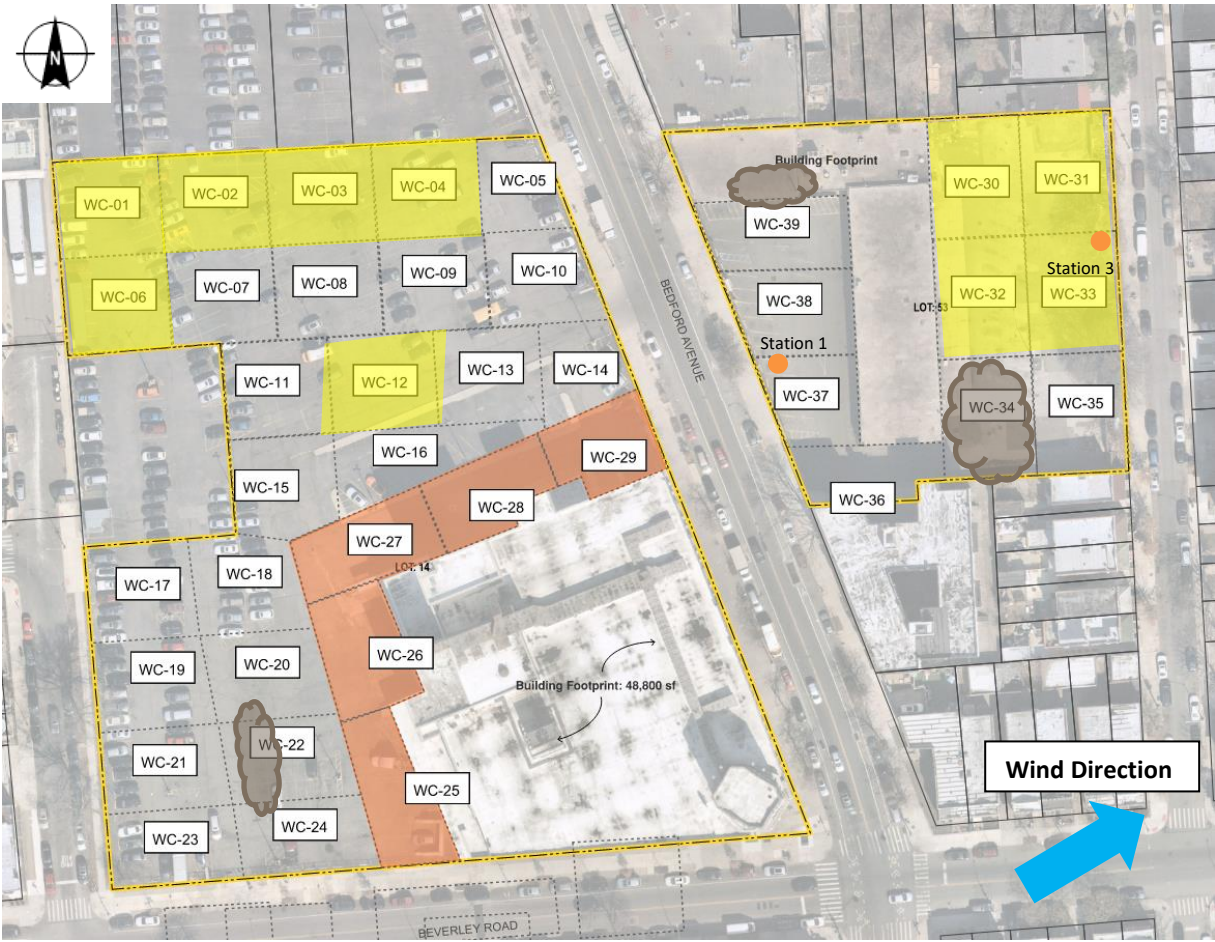
*Photo 1: View of contractor loading soil on Lot 53, facing east.*



*Photo 2: View of contractor loading asphalt in Lot 14, facing south.*

**Site Plan:**

Reference: Waste Characterization Letter Figure 3 Grid Location Map, prepared by Haley & Aldrich, dated October 2023



**LEGEND:**

- Area of work
- CAMP Station
- Stockpile Location (soil/fill)
- Stockpile location (C&D)

2360 Bedford Avenue, Brooklyn NY

Air Monitoring Log

Date : 2024-01-25

Personnel : D. Djombalic, N. Mooney & A. Stewart

Weather : Rain

Humidity : 95%

Wind Direction : WSW to ENE, 5 mph

Particulate Background (ug/m3) : 20.455

PID Background (ppm) : 0.0

Action Levels : Downwind perimeter of work area above background levels

PID (ppm) : > 5 ppm for the 15-min average

Dust (ug/m3) : > 150 for the 15-min average

Minute of Time	Avg. PM10 (Station1)	Avg. PM10 (Station2)	Avg. PM10 (Station3)	Avg. PM10 (Station4)	Avg. VOC(Station1)	Avg. VOC(Station2)	Avg. VOC(Station3)	Avg. VOC(Station4)	Odors	Notes Activities/ Additional Monitoring
11:30	20.455				0.0					
11:45	11.553		13.098		0.0		0.0			
12:00	9.979		11.006		0.1		0.0			
12:15	10.095		10.528		0.1		0.0			
12:30	10.521		10.386		0.1		0.0			
12:45	8.120		8.338		0.1		0.0			
13:00	7.764		9.251		0.0		0.0			
13:15	8.300		7.955		0.1		0.0			
13:30	9.661		11.021		0.1		0.0			
13:45	9.506		10.228		0.0		0.0			
14:00	9.896		10.737		0.0		0.0			
14:15	9.931		8.876		0.0		0.0			
14:30	9.614		9.001		0.0		0.0			
14:45	10.343		9.211		0.1		0.0			
15:00	11.497		10.148		0.1		0.0			