



DAILY FIELD REPORT

Project	Bedford Beverly Brownfield Site	Report No.	93
BCP Site	BCP Site No. C224384	Date	02/16/2024
Location	2359 and 2360 Bedford Avenue, Brooklyn, NY	File No.	0205432
Client	Bedford Beverly Acquisitions LLC	Temperature	31-41°F
Contractor	Haley & Aldrich, Maman Contracting (Maman), International Concrete, Cascade Remediation Services (Cascade)	Wind Direction	NW to SE, 16 mph
Weather	Windy	Personnel on Site	D. Djombalic & E. Nunez
Humidity	56%	Time on Site	7:00 am to 3:00 pm

Haley & Aldrich of New York Engineering and Geology, LLP (Haley & Aldrich) was present to document implementation of the January 2024 NYSDEC-approved Remedial Action Work Plan (RAWP) prepared by Haley & Aldrich for the Bedford Beverly BCP Site (C224384), located at 2359 and 2360 Bedford Avenue, Brooklyn, NY. Site observations are summarized below.

Daily Observations:

- Contractor (International Concrete) continued support of excavation (SOE) and foundation installation within Lot 14 and along the perimeter of Lot 53.
- Contractor (International Concrete) breaking up concrete in the northeastern region of Lot 53 and stockpiling for disposal.

Waste Disposal/Backfill Import Tracking:

Material Export:

- Seventy-two (72) loads of non-hazardous fill material from grids WC-7 (0-5'), WC-2 (5-10'), WC-8 (0-5'), WC-08 (5-10'), WC-13 (10-15'), and WC-16 (0-5').
- Soil/Fill disposal is summarized below:

	<i>Facility: Bayshore Soil Management, Keasbey, NJ (Non-Haz Soil)</i>		<i>Facility: P Park NJ LLC, Prospect Park, NJ (Non-Haz Soil)</i>		<i>Facility: Keystone Trade Center, Fairless Hills, PA (Non-Haz Soil)</i>	
<i>Today:</i>	15 Loads	300 CY	57 Loads	1,140 CY	0 Loads	0 CY
<i>Total:</i>	<u>405 Loads</u>	<u>8,100 CY</u>	<u>1,709 Loads</u>	<u>34,180 CY</u>	<u>706 Loads</u>	<u>14,120 CY</u>
	<i>Facility: Posillico Materials Permitted Wash Plant, LLC, Farmingdale, NY (Non-Haz Soil)</i>		<i>Facility: Republic Environmental Systems, LLC, Hatfield PA (Haz Soil)</i>		<i>Facility: Conestoga Republic Environmental Systems, LLC, Prospect Park, NJ (Non-Haz Soil)</i>	
<i>Today:</i>	0 Loads	0 CY	0 Loads	0 CY	0 Loads	0 CY
<i>Total:</i>	<u>479 Loads</u>	<u>9,580 CY</u>	<u>5 Loads</u>	<u>100 CY</u>	<u>44 Loads</u>	<u>880 CY</u>
Sitewide Total			*Note, 1 truck estimated at 20 cubic yards. Final tonnages will be present in the Final Engineering Report (FER)			
<i>Today:</i>	72 Loads	1,440 CY				
<i>Total:</i>	<u>3,354 Loads</u>	<u>67,080 CY</u>				

- Asphalt disposal is summarized below:

	Facility: Flushing Asphalt Recycling, Flushing NY (Asphalt)		Facility: Mount Materials, Fairless Hills, PA (Asphalt)		Totals:	
Today:	0 Loads	0 CY	0 Loads	0 CY	0 Loads	0 CY
Total:	<u>117 Loads</u>	<u>2,340 CY</u>	<u>43 Loads</u>	<u>860 CY</u>	<u>160 Loads</u>	<u>3,200 CY</u>

*Note, 1 truck estimated at 20 cubic yards. Final tonnages will be present in the Final Engineering Report (FER)

- C&D disposal is summarized below:

	Facility: Mount Materials, Fairless Hills, PA (Non-Haz Concrete)		Totals:	
Today:	6 Loads	120 CY	6 Loads	120 CY
Total:	<u>120 Loads</u>	<u>2,400 CY</u>	<u>120 Loads</u>	<u>2,400 CY</u>

*Note, 1 truck estimated at 20 cubic yards. Final tonnages will be present in the Final Engineering Report (FER)

Material Import:

- Material import is summarized below:

	Facility: Mount Hope Quarry, Wharton, NJ (ASTM #57)		Facility: Mount Hope Quarry, Wharton, NJ (ASTM #3)		Totals:	
Today:	0 Loads	0 CY	0 loads	0 CY	0 Loads	0 CY
Total:	<u>5 Loads</u>	<u>100 CY</u>	<u>25 loads</u>	<u>480 CY</u>	<u>30 Loads</u>	<u>60 CY</u>

*Note, 1 truck estimated at 20 cubic yards. Final tonnages will be present in the Final Engineering Report (FER)

Injection Tracking:

- ZVI injections were completed on February 1, 2024, in Lot 14.
- ISCO injections were completed on February 12, 2024, in Lot 53.

Samples Collected:

- Confirmation soil samples were collected in the following locations: EP-51, EP-59, and EP-60.
- UST-04 was re-sampled.
- The soil samples were relinquished to Eurofins Scientific of Edison, New Jersey (a NYSDOH ELPA certified laboratory) under chain of custody procedures.

CAMP Activities:

- Air monitoring during ground-intrusive activities was performed at four locations during ground intrusive between 7:20 am to 4:30 pm. No 15-minute average concentration of volatiles organic compounds (VOCs) or particulate 15-minute average concentration of matter smaller than 10 microns in diameter (PM10) exceeded the action levels. No visible dust was observed leaving the site perimeter.

Activities Planned for Coming Week:

- Contractor (International Concrete) will continue stockpiling soil on the perimeter of Lots 14 and 53 for disposal.
- Contractor (International Concrete) will continue transportation and disposal of soil/fill to approved facilities.

Site Photographs:



Photo 1: View of contractor loading soil in Lot 14, facing east.



Photo 2: View of site conditions in Lot 14, facing northwest.



Photo 3: View of contractor loading soil on Lot 53, facing north.



Photo 4: View of contractor breaking C&D on lot 53, facing northeast.

2360 Bedford Avenue, Brooklyn NY

Air Monitoring Log

Date : 2024-02-16

Personnel : E. Nunez & D. Djombalic
 Weather : Windy
 Humidity : 56%
 Wind Direction : NW to SE, up to 16 mph

Particulate Background (ug/m3) : 5.823
 PID Background (ppm) : 0.0

Action Levels : Downwind perimeter of work area above background levels
 PID (ppm) : > 5 ppm for the 15-min average
 Dust (ug/m3) : > 150 for the 15-min average

Minute of Time	Avg. PM10 (Station1)	Avg. PM10 (Station2)	Avg. PM10 (Station3)	Avg. PM10 (Station4)	Avg. VOC(Station1)	Avg. VOC(Station2)	Avg. VOC(Station3)	Avg. VOC(Station4)	Odors	Notes Activities/ Additional Monitoring
07:15		5.823		12.893		0.0		0.0		
07:30	33.004	4.211	11.240	11.164	0.0	0.0	0.0	0.0		
07:45	17.210	4.022	7.622	9.864	0.0	0.0	0.0	0.0		
08:00	13.400	3.881	8.873	8.308	0.0	0.0	0.0	0.0		
08:15	14.504	3.705	7.624	8.271	0.0	0.0	0.0	0.0		
08:30	10.843	2.893	5.079	10.784	0.0	0.0	0.0	0.0		
08:45	10.344	2.899	3.497	9.291	0.0	0.0	0.0	0.0		
09:00	6.191	2.034	2.797	8.230	0.0	0.0	0.0	0.0		
09:15	6.969	3.627	3.166	10.333	0.0	0.0	0.0	0.0		
09:30	7.163	3.134	5.012	9.603	0.0	0.0	0.0	0.0		
09:45	10.566	3.305	6.186	8.678	0.0	0.0	0.0	0.0		
10:00	9.754	3.552	3.405	9.579	0.0	0.0	0.0	0.0		
10:15	9.049	3.309	3.924	9.296	0.0	0.0	0.0	0.1		
10:30	10.169	3.135	6.046	7.421	0.0	0.0	0.0	0.0		
10:45	7.903	2.373	5.751	6.265	0.0	0.0	0.0	0.0		

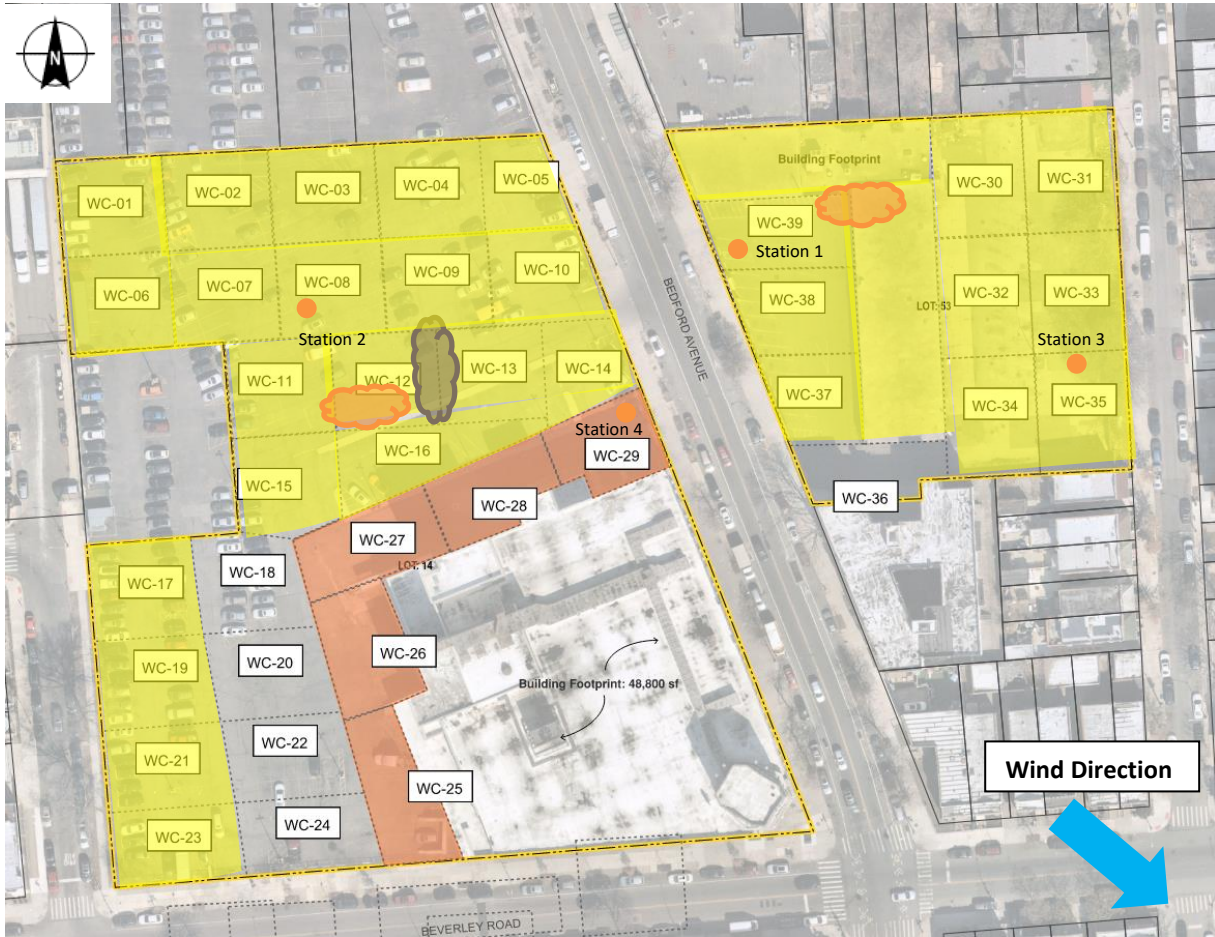
2360 Bedford Avenue, Brooklyn NY

Air Monitoring Log

Minute of Time	Avg. PM10 (Station1)	Avg. PM10 (Station2)	Avg. PM10 (Station3)	Avg. PM10 (Station4)	Avg. VOC(Station1)	Avg. VOC(Station2)	Avg. VOC(Station3)	Avg. VOC(Station4)	Odors	Notes Activities/ Additional Monitoring
11:00	8.995	2.715	4.425	7.3	0.0	0.0	0.0	0.0		
11:15	7.063	2.099	6.942	6.2	0.0	0.0	0.0	0.0		
11:30	7.085	1.759	7.240	4.9	0.0	0.0	0.0	0.0		
11:45	6.061	2.280	4.462	4.9	0.0	0.0	0.0	0.0		
12:00	4.139	1.326	1.408	3.3	0.0	0.0	0.0	0.0		
12:15	3.567	1.304	1.105	2.6	0.0	0.0	0.0	0.0		
12:30	4.079	2.112	3.190	2.6	0.0	0.0	0.0	0.0		
12:45	4.521	2.554	5.344	3.1	0.0	0.0	0.0	0.0		
13:00	5.168	2.529	6.369	4.0	0.0	0.0	0.0	0.0		
13:15	4.201	2.838	4.710	3.3	0.0	0.0	0.0	0.0		
13:30	4.843	3.315	5.280	3.3	0.0	0.0	0.0	0.0		
13:45	5.085	2.638	3.382	2.9	0.0	0.0	0.0	0.0		
14:00	6.045	2.927	4.889	3.1	0.0	0.0	0.0	0.0		
14:15	5.439	3.085	4.087	3.2	0.0	0.0	0.0	0.0		
14:30	5.361	2.551	2.467	2.8	0.0	0.0	0.0	0.0		

Site Plan:

Reference: Waste Characterization Letter Figure 3 Grid Location Map, prepared by Haley & Aldrich, dated October 2023



LEGEND:

- Area of work
- CAMP Station
- Stockpile Location (soil/fill)
- Stockpile location (C&D)