



# DAILY FIELD REPORT

<b>Project</b>	Bedford Beverly Brownfield Site	<b>Report No.</b>	99
<b>BCP Site</b>	BCP Site No. C224384	<b>Date</b>	02/26/2024
<b>Location</b>	2359 and 2360 Bedford Avenue, Brooklyn, NY	<b>File No.</b>	0205432
<b>Client</b>	Bedford Beverly Acquisitions LLC	<b>Temperature</b>	33-52°F
<b>Contractor</b>	Haley & Aldrich, Maman Contracting (Maman), International Concrete	<b>Wind Direction</b>	SW to NE, 6 mph
<b>Weather</b>	Sunny	<b>Personnel on Site</b>	E. Nunez & A. Stewart
<b>Humidity</b>	88%	<b>Time on Site</b>	6:45 am to 3:00 pm

Haley & Aldrich of New York Engineering and Geology, LLP (Haley & Aldrich) was present to document implementation of the January 2024 NYSDEC-approved Remedial Action Work Plan (RAWP) prepared by Haley & Aldrich for the Bedford Beverly BCP Site (C224384), located at 2359 and 2360 Bedford Avenue, Brooklyn, NY. Site observations are summarized below.

**Daily Observations:**

- Contractor (International Concrete) continued support of excavation (SOE) and foundation installation within Lot 14 and along the perimeter of Lot 53.
- Contractor (International Concrete) breaking up concrete in the northeastern region of Lot 53 and stockpiling for disposal.

**Waste Disposal/Backfill Import Tracking:**

**Material Export:**

- Sixty-Two (62) loads of non-hazardous fill material from grids WC-05(5-10'), WC-09(10-15'), WC-03(5-10'), WC-32(5-10'), and WC-33(5-10').
- Soil/Fill disposal is summarized below:

	<i>Facility: Bayshore Soil Management, Keasbey, NJ (Non-Haz Soil)</i>		<i>Facility: P Park NJ LLC, Prospect Park, NJ (Non-Haz Soil)</i>		<i>Facility: Keystone Trade Center, Fairless Hills, PA (Non-Haz Soil)</i>	
<i>Today:</i>	0 Loads	0 CY	62 Loads	1,240 CY	0 Loads	0 CY
<i>Total:</i>	<u>447 Loads</u>	<u>8,940 CY</u>	<u>1,824 Loads</u>	<u>37,720 CY</u>	<u>730 Loads</u>	<u>14,600 CY</u>
	<i>Facility: Posillico Materials Permitted Wash Plant, LLC, Farmingdale, NY (Non-Haz Soil)</i>		<i>Facility: Republic Environmental Systems, LLC, Hatfield PA (Haz Soil)</i>		<i>Facility: Conestoga Republic Environmental Systems, LLC, Prospect Park, NJ (Non-Haz Soil)</i>	
<i>Today:</i>	0 Loads	0 CY	0 Loads	0 CY	0 Loads	0 CY
<i>Total:</i>	<u>479 Loads</u>	<u>9,580 CY</u>	<u>5 Loads</u>	<u>100 CY</u>	<u>44 Loads</u>	<u>880 CY</u>
<b>Sitewide Total</b>			*Note, 1 truck estimated at 20 cubic yards. Final tonnages will be present in the Final Engineering Report (FER)			
<i>Today:</i>	62 Loads	1,240CY				
<i>Total:</i>	<u>3,597 Loads</u>	71,940 CY				

- Asphalt disposal is summarized below:

	<i>Facility: Flushing Asphalt Recycling, Flushing NY (Asphalt)</i>		<i>Facility: Mount Materials, Fairless Hills, PA (Asphalt)</i>		<i>Totals:</i>	
<i>Today:</i>	0 Loads	0 CY	0 Loads	0 CY	0 Loads	0 CY
<i>Total:</i>	<u>117 Loads</u>	<u>2,340 CY</u>	<u>43 Loads</u>	<u>860 CY</u>	<u>160 Loads</u>	<u>3,200 CY</u>

\*Note, 1 truck estimated at 20 cubic yards. Final tonnages will be present in the Final Engineering Report (FER)

- C&D disposal is summarized below:

	<i>Facility: Mount Materials, Fairless Hills, PA (Non-Haz Concrete)</i>		<i>Totals:</i>	
<i>Today:</i>	10 Loads	200 CY	10 Loads	200 CY
<i>Total:</i>	<u>166 Loads</u>	<u>3,320 CY</u>	<u>166 Loads</u>	<u>3,320 CY</u>

\*Note, 1 truck estimated at 20 cubic yards. Final tonnages will be present in the Final Engineering Report (FER)

**Material Import:**

- Material import is summarized below:

	<i>Facility: Mount Hope Quarry, Wharton, NJ (ASTM #57)</i>		<i>Facility: Mount Hope Quarry, Wharton, NJ (ASTM #3)</i>		<i>Totals:</i>	
<i>Today:</i>	0 Loads	0 CY	3 loads	60 CY	3 Loads	60 CY
<i>Total:</i>	<u>5 Loads</u>	<u>100 CY</u>	<u>29 loads</u>	<u>560 CY</u>	<u>34 Loads</u>	<u>680 CY</u>

\*Note, 1 truck estimated at 20 cubic yards. Final tonnages will be present in the Final Engineering Report (FER)

**Injection Tracking:**

- ZVI injections were completed on February 1, 2024, in Lot 14.
- ISCO injections were completed on February 12, 2024, in Lot 53.

**Samples Collected:**

- No samples were collected.

**CAMP Activities:**

- Air monitoring during ground-intrusive activities was performed at four locations during ground intrusive between 6:45 am to 2:45 pm. No 15-minute average concentration of volatiles organic compounds (VOCs) or particulate 15-minute average concentration of matter smaller than 10 microns in diameter (PM10) exceeded the action levels. No visible dust was observed leaving the site perimeter.

**Activities Planned for Coming Week:**

- Contractor (International Concrete) will continue stockpiling soil on the perimeter of Lots 14 and 53 for disposal.
- Contractor (International Concrete) will continue transportation and disposal of soil/fill to approved facilities.
- Contractor (Eastern Environmental) will continue removal of six USTs on Lot 53.

**Site Photographs:**



*Photo 1: View of soil conditions Lot 14, facing south.*



*Photo 2: View of site conditions on Lot 53, facing east.*





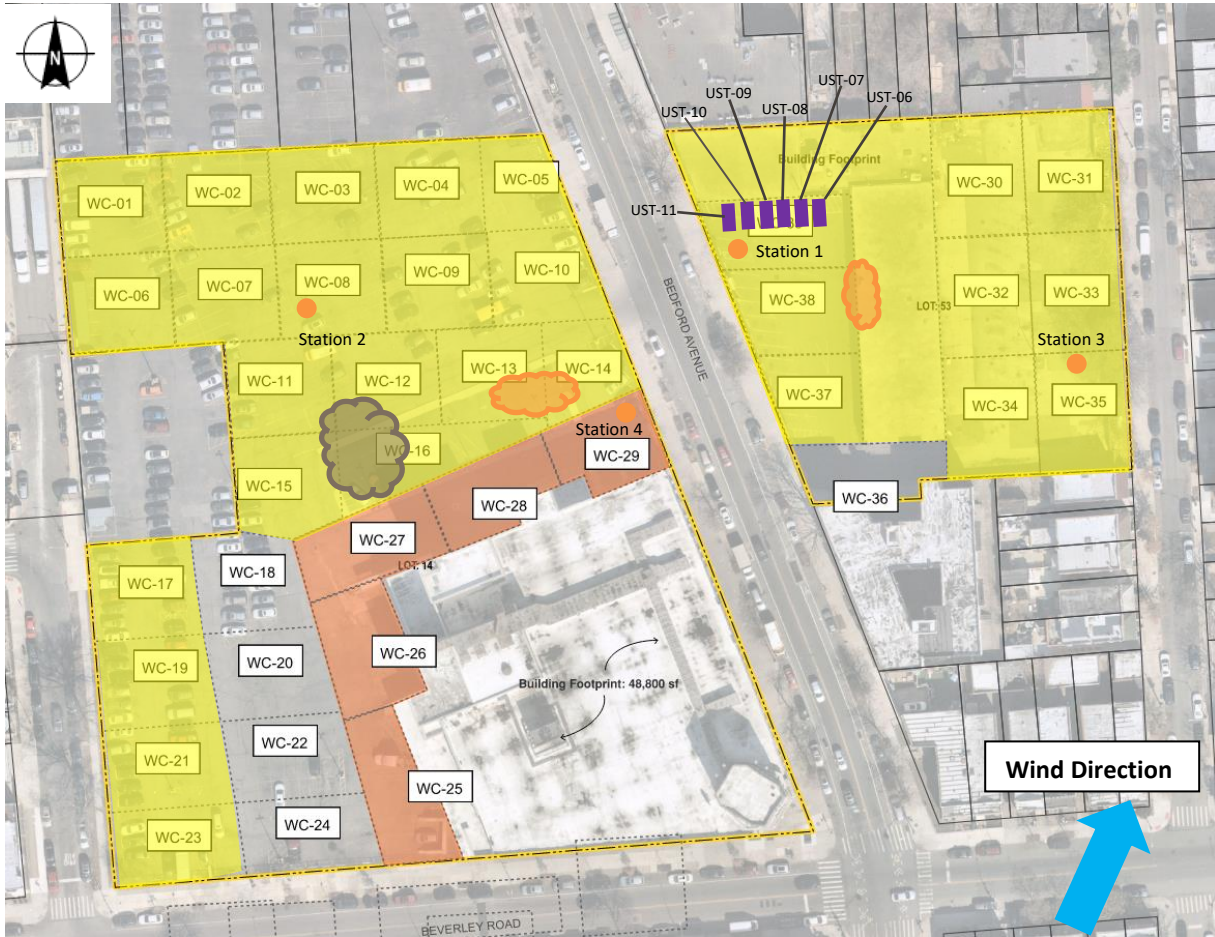
*Photo 3: View of soil loadout on Lot 53, facing northeast.*



*Photo 4: View of soil loadout on Lot 14, facing northwest.*

**Site Plan:**

Reference: Waste Characterization Letter Figure 3 Grid Location Map, prepared by Haley & Aldrich, dated October 2023



**LEGEND:**

- Area of work
- CAMP Station
- Stockpile Location (soil/fill)
- Stockpile location (C&D)
- UST

2360 Bedford Avenue, Brooklyn NY

Air Monitoring Log

Date : 2024-02-26

Personnel : E. Nunez & A. Stewart

Weather : Sunny

Humidity : 88%

Wind Direction : SW to NE, 6 mph

Particulate Background (ug/m3) : 3.463

PID Background (ppm) : 0.0

Action Levels : Downwind perimeter of work area above background levels

PID (ppm) : > 5 ppm for the 15-min average

Dust (ug/m3) : > 150 for the 15-min average

Minute of Time	Avg. PM10 (Station1)	Avg. PM10 (Station2)	Avg. PM10 (Station3)	Avg. PM10 (Station4)	Avg. VOC(Station1)	Avg. VOC(Station2)	Avg. VOC(Station3)	Avg. VOC(Station4)	Odors	Notes Activities/ Additional Monitoring
06:45		3.463		3.510		0.0		0.0		
07:00		2.997		6.550		0.0		0.0		
07:15	9.467	2.946		4.810	1.1	0.0		0.0		
07:30	7.462	3.463	23.903	5.097	0.2	0.0	0.0	0.0		
07:45	6.882	3.071	16.266	5.228	0.1	0.0	0.0	0.0		
08:00	7.039	3.594	9.949	5.004	0.1	0.0	0.0	0.0		
08:15	6.707	3.130	25.134	5.211	0.1	0.0	0.0	0.0		
08:30	7.450	3.889	10.561	4.038	0.1	0.0	0.0	0.0		
08:45	7.228	3.445	10.405	4.572	0.1	0.0	0.0	0.0		
09:00	6.228	3.448	4.268	4.895	0.1	0.0	0.0	0.0		
09:15	6.347	3.490	6.579	4.325	0.0	0.0	0.0	0.0		
09:30	7.391	3.630	17.509	5.633	0.0	0.0	0.0	0.0		
09:45	8.852	3.905	26.712	5.113	0.0	0.0	0.0	0.0		
10:00	7.641	4.290	11.685	5.252	0.0	0.0	0.0	0.0		
10:15	9.024	4.060	7.566	5.325	0.0	0.0	0.0	0.0		
10:30	10.499	4.388	12.777	6.012	0.1	0.0	0.0	0.0		
10:45	10.747	4.259	9.382	6.079	0.1	0.0	0.0	0.0		

2360 Bedford Avenue, Brooklyn NY

Air Monitoring Log

Minute of Time	Avg. PM10 (Station1)	Avg. PM10 (Station2)	Avg. PM10 (Station3)	Avg. PM10 (Station4)	Avg. VOC(Station1)	Avg. VOC(Station2)	Avg. VOC(Station3)	Avg. VOC(Station4)	Odors	Notes Activities/ Additional Monitoring
11:00	8.654	4.640	8.827	6.6	0.1	0.0	0.0	0.0		
11:15	9.643	4.726	8.531	5.6	0.0	0.0	0.0	0.0		
11:30	6.706	4.714	10.938	6.0	0.1	0.0	0.0	0.0		
11:45	7.889	4.833	10.325	5.4	0.0	0.0	0.0	0.0		
12:00	6.300	4.787	5.217	4.5	0.0	0.0	0.0	0.0		
12:15	6.537	4.776	4.995	4.3	0.0	0.0	0.0	0.0		
12:30	6.586	5.052	5.609	5.1	0.0	0.0	0.0	0.0		
12:45	9.283	5.154	6.103	5.5	0.1	0.0	0.0	0.0		
13:00	9.701	5.574	7.420	5.8	0.1	0.0	0.0	0.0		
13:15	12.969	6.038	6.226	5.8	0.0	0.0	0.0	0.0		
13:30	9.918	5.894	9.855	6.1	0.1	0.0	0.0	0.0		
13:45	10.118	5.868	9.025	6.0	0.0	0.0	0.0	0.0		
14:00	8.446	6.174	9.442	5.7	0.0	0.0	0.0	0.0		
14:15	8.252	5.696	8.512	5.8	0.0	0.0	0.0	0.0		
14:30	9.796	5.692	11.652	5.6	0.1	0.0	0.0	0.0		
14:45		4.987		4.9		0.0		0.0		