



DAILY FIELD REPORT

Project	Bedford Beverly Brownfield Site	Report No.	106
BCP Site	BCP Site No. C224384	Date	03/06/2024
Location	2359 and 2360 Bedford Avenue, Brooklyn, NY	File No.	0205432
Client	Bedford Beverly Acquisitions LLC	Temperature	43-53°F
Contractor	Haley & Aldrich, Maman Contracting (Maman), International Concrete	Wind Direction	NE to SW, 13 mph
Weather	Cloudy	Personnel on Site	E. Nunez & A. Stewart
Humidity	87%	Time on Site	6:45 am to 2:30 pm

Haley & Aldrich of New York Engineering and Geology, LLP (Haley & Aldrich) was present to document implementation of the January 2024 NYSDEC-approved Remedial Action Work Plan (RAWP) prepared by Haley & Aldrich for the Bedford Beverly BCP Site (C224384), located at 2359 and 2360 Bedford Avenue, Brooklyn, NY. Site observations are summarized below.

Daily Observations:

- Contractor (International Concrete) continued support of excavation (SOE) and foundation installation within Lot 14 and Lot 53.
- Contractor (International Concrete) breaking up concrete in the northwestern region of Lot 53 and stockpiling for disposal.

Waste Disposal/Backfill Import Tracking:

Material Export:

- No material was exported from the site.
- Soil/Fill disposal is summarized below:

	<i>Facility: Bayshore Soil Management, Keasbey, NJ (Non-Haz Soil)</i>		<i>Facility: P Park NJ LLC, Prospect Park, NJ (Non-Haz Soil)</i>		<i>Facility: Keystone Trade Center, Fairless Hills, PA (Non-Haz Soil)</i>	
<i>Today:</i>	0 Loads	0 CY	0 Loads	0 CY	0 Loads	0 CY
<i>Total:</i>	<u>447 Loads</u>	<u>8,940 CY</u>	<u>1,853 Loads</u>	<u>37,060 CY</u>	<u>809 Loads</u>	<u>16,180 CY</u>
	<i>Facility: Posillico Materials Permitted Wash Plant, LLC, Farmingdale, NY (Non-Haz Soil)</i>		<i>Facility: Republic Environmental Systems, LLC, Hatfield PA (Haz Soil)</i>		<i>Facility: Conestoga Republic Environmental Systems, LLC, Prospect Park, NJ (Non-Haz Soil)</i>	
<i>Today:</i>	0 Loads	0 CY	0 Loads	0 CY	0 Loads	0 CY
<i>Total:</i>	<u>580 Loads</u>	<u>11,600 CY</u>	<u>5 Loads</u>	<u>100 CY</u>	<u>44 Loads</u>	<u>880 CY</u>
Sitewide Total			*Note, 1 truck estimated at 20 cubic yards. Final tonnages will be present in the Final Engineering Report (FER)			
<i>Today:</i>	0 Loads	0 CY				
<i>Total:</i>	<u>3,806 Loads</u>	<u>76,120 CY</u>				

- Asphalt disposal is summarized below:

	Facility: Flushing Asphalt Recycling, Flushing NY (Asphalt)		Facility: Mount Materials, Fairless Hills, PA (Asphalt)		Totals:	
Today:	0 Loads	0 CY	0 Loads	0 CY	0 Loads	0 CY
Total:	<u>117 Loads</u>	<u>2,340 CY</u>	<u>43 Loads</u>	<u>860 CY</u>	<u>160 Loads</u>	<u>3,200 CY</u>

*Note, 1 truck estimated at 20 cubic yards. Final tonnages will be present in the Final Engineering Report (FER)

- C&D disposal is summarized below:

	Facility: Mount Materials, Fairless Hills, PA (Non-Haz Concrete)		Totals:	
Today:	0 Loads	0 CY	0 Loads	0 CY
Total:	<u>197 Loads</u>	<u>3,940 CY</u>	<u>197 Loads</u>	<u>3,940 CY</u>

*Note, 1 truck estimated at 20 cubic yards. Final tonnages will be present in the Final Engineering Report (FER)

Material Import:

- No material was imported to the site.
- Material import is summarized below:

	Facility: Mount Hope Quarry, Wharton, NJ (ASTM #57)		Facility: Mount Hope Quarry, Wharton, NJ (ASTM #3)		Totals:	
Today:	0 Loads	0 Tons	0 loads	0 Tons	0 Loads	0 Tons
Total:	<u>5 Loads</u>	<u>121.93 Tons</u>	<u>28 loads</u>	<u>683.35 Tons</u>	<u>33 Loads</u>	<u>805.28 Tons</u>

Injection Tracking:

- ZVI injections were completed on February 1, 2024, in Lot 14.
- ISCO injections were completed on February 12, 2024, in Lot 53.

Samples Collected:

- No samples were collected.

CAMP Activities:

- Air monitoring during ground-intrusive activities was performed at four locations during ground intrusive between 7:00 am to 2:15 pm. No 15-minute average concentration of volatiles organic compounds (VOCs) or particulate 15-minute average concentration of matter smaller than 10 microns in diameter (PM10) exceeded the action levels. No visible dust was observed leaving the site perimeter.

Activities Planned for Coming Week:

- Contractor (International Concrete) will continue stockpiling soil at Lots 14 and 53 for disposal.
- Contractor (International Concrete) will continue transportation and disposal of soil/fill to approved facilities.

Site Photographs:



Photo 1: View of site conditions in Lot 53, facing southwest.



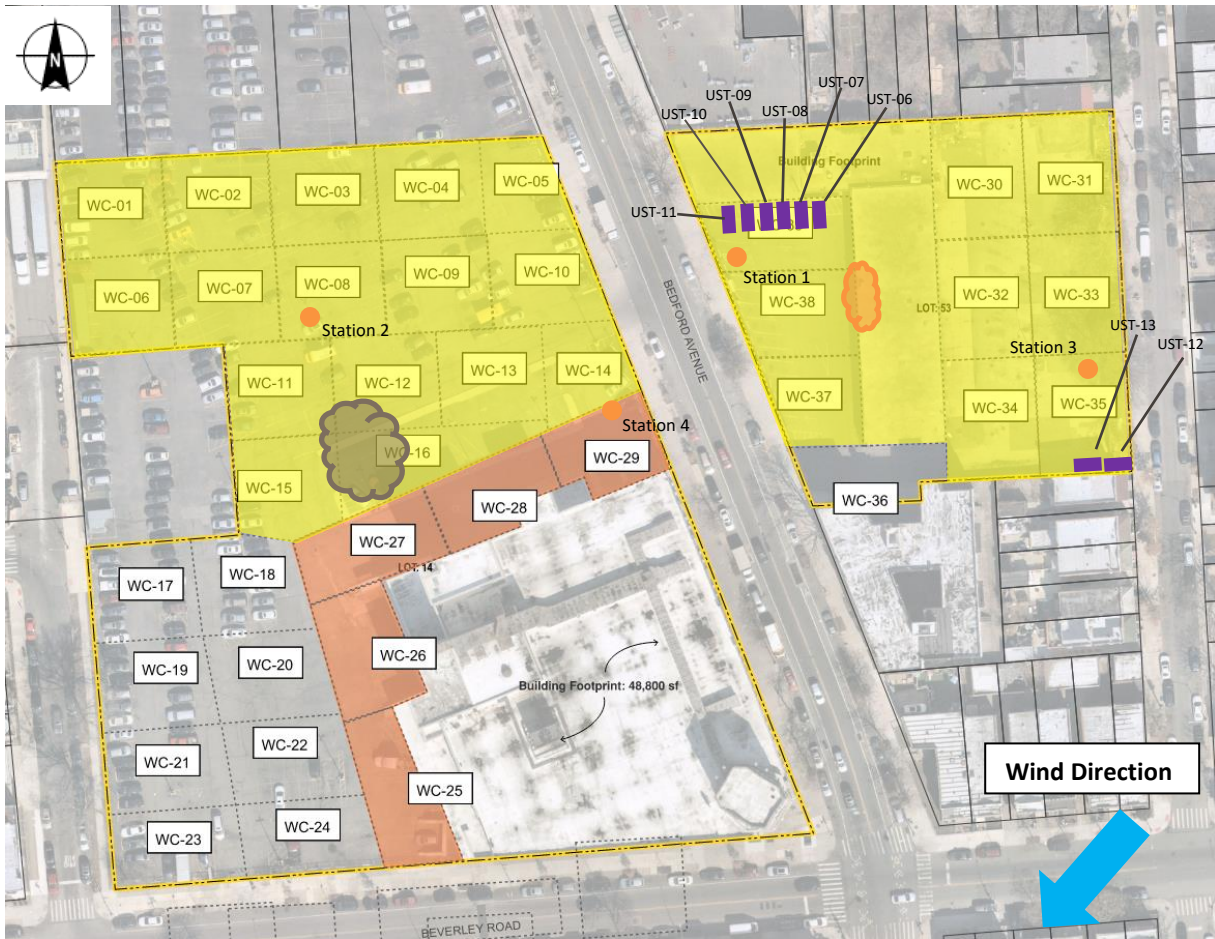
Photo 2: View of site conditions in Lot 14, facing northwest.



Photo 3: View of Eastern Environmental exporting USTs on Lot 14, facing northeast.

Site Plan:

Reference: Waste Characterization Letter Figure 3 Grid Location Map, prepared by Haley & Aldrich, dated October 2023



LEGEND:

- Area of work
- CAMP Station
- Stockpile Location (soil/fill)
- Stockpile location (C&D)
- UST

2360 Bedford Avenue, Brooklyn NY

Air Monitoring Log

Date : 2024-03-06

Personnel : E. Nunez & A. Stewart
 Weather : Cloudy
 Humidity : 87%
 Wind Direction : NE to SW, 13 mph

Particulate Background (ug/m3) : 30.127
 PID Background (ppm) : 0.0

Action Levels : Downwind perimeter of work area above background levels
 PID (ppm) : > 5 ppm for the 15-min average
 Dust (ug/m3) : > 150 for the 15-min average

Minute of Time	Avg. PM10 (Station1)	Avg. PM10 (Station2)	Avg. PM10 (Station3)	Avg. PM10 (Station4)	Avg. VOC(Station1)	Avg. VOC(Station2)	Avg. VOC(Station3)	Avg. VOC(Station4)	Odors	Notes Activities/ Additional Monitoring
07:00		33.132		37.024		0.0		0.0		
07:15	122.715	23.467	36.352	22.307	0.0	0.0	0.0	0.0		
07:30	93.947	19.889	22.287	19.236	0.0	0.0	0.0	0.0		
07:45	58.154	19.059	19.660	18.405	0.0	0.0	0.0	0.0		
08:00	47.269	19.584	19.132	18.054	0.0	0.0	0.0	0.0		
08:15	33.106	17.039	16.183	16.173	0.0	0.0	0.0	0.0		
08:30	32.820	19.125	18.365	17.725	0.0	0.0	0.0	0.0		
08:45	43.636	27.867	27.425	25.584	0.0	0.0	0.0	0.0		
09:00	40.498	26.193	26.059	24.356	0.0	0.0	0.0	0.0		
09:15	41.888	27.548	27.067	25.130	0.0	0.0	0.0	0.0		
09:30	46.949	29.032	29.137	26.820	0.0	0.0	0.0	0.0		
09:45	48.353	28.127	27.536	25.360	0.0	0.0	0.0	0.0		
10:00	39.835	24.241	24.491	22.937	0.1	0.0	0.0	0.0		
10:15	36.095	20.197	23.252	18.945	0.0	0.0	0.0	0.0		
10:30	36.357	23.357	23.423	21.143	0.0	0.0	0.0	0.0		
10:45	59.205	23.507	23.916	21.367	0.1	0.0	0.0	0.0		

2360 Bedford Avenue, Brooklyn NY

Air Monitoring Log

Minute of Time	Avg. PM10 (Station1)	Avg. PM10 (Station2)	Avg. PM10 (Station3)	Avg. PM10 (Station4)	Avg. VOC(Station1)	Avg. VOC(Station2)	Avg. VOC(Station3)	Avg. VOC(Station4)	Odors	Notes Activities/ Additional Monitoring
11:00	35.164	22.790	38.426	20.7	0.0	0.0	0.0	0.0		
11:15	30.623	20.251	23.544	19.2	0.0	0.0	0.0	0.0		
11:30	31.319	20.411	21.239	18.6	0.0	0.0	0.0	0.0		
11:45	29.873	20.604	18.976	18.5	0.0	0.0	0.0	0.0		
12:00	30.436	23.997	19.678	20.4	0.0	0.0	0.0	0.0		
12:15	33.051	25.121	21.741	22.4	0.0	0.0	0.0	0.0		
12:30	31.546	23.127	19.693	20.7	0.0	0.0	0.0	0.0		
12:45	25.493	17.690	18.933	16.4	0.0	0.0	0.0	0.0		
13:00	20.472	14.303	12.906	12.9	0.0	0.0	0.0	0.0		
13:15	18.488	11.240	10.923	10.3	0.0	0.0	0.0	0.0		
13:30	16.083	9.640	8.946	9.5	0.0	0.0	0.0	0.0		
13:45	13.172	8.095	7.306	7.8	0.0	0.0	0.0	0.0		
14:00	14.010	8.754	8.365	8.5	0.0	0.0	0.0	0.0		
14:15	12.808	9.605	8.317	9.1	0.0	0.0	0.0	0.0		