



DAILY FIELD REPORT

Project	Bedford Beverly Brownfield Site	Report No.	123
BCP Site	BCP Site No. C224384	Date	03/29/2024
Location	2359 and 2360 Bedford Avenue, Brooklyn, NY	File No.	0205432
Client	Bedford Beverly Acquisitions LLC	Temperature	41-55°F
Contractor	Haley & Aldrich, Maman Contracting (Maman), International Concrete	Wind Direction	NW to SE, 13 mph
Weather	Cloudy	Personnel on Site	E. Nunez
Humidity	58%	Time on Site	6:45 am to 1:00 pm

Haley & Aldrich of New York Engineering and Geology, LLP (Haley & Aldrich) was present to document implementation of the January 2024 NYSDEC-approved Remedial Action Work Plan (RAWP) prepared by Haley & Aldrich for the Bedford Beverly BCP Site (C224384), located at 2359 and 2360 Bedford Avenue, Brooklyn, NY. Site observations are summarized below.

Daily Observations:

- Contractor (International Concrete) continued support of excavation (SOE) and foundation installation within Lot 14 and Lot 53.
- Contractor (International Concrete) continued breaking up concrete in the northwestern region of Lot 53 and stockpiling for disposal.
- Contractor (International Concrete) continued footing and subgrade preparation in Lots 14 and 53.

Waste Disposal/Backfill Import Tracking:

Material Export:

- Soil/Fill disposal is summarized below:

	<i>Facility: Bayshore Soil Management, Keasbey, NJ (Non-Haz Soil)</i>		<i>Facility: P Park NJ LLC, Prospect Park, NJ (Non-Haz Soil)</i>		<i>Facility: Keystone Trade Center, Fairless Hills, PA (Non-Haz Soil)</i>	
<i>Today:</i>	0 Loads	0 CY	0 Loads	0 CY	0 Loads	0 CY
<i>Total:</i>	447 Loads	8,940 CY	2,083 Loads	41,660 CY	866 Loads	17,320 CY
	<i>Facility: Posillico Materials Permitted Wash Plant, LLC, Farmingdale, NY (Non-Haz Soil)</i>		<i>Facility: Republic Environmental Systems, LLC, Hatfield PA (Haz Soil)</i>		<i>Facility: Conestoga Republic Environmental Systems, LLC, Prospect Park, NJ (Non-Haz Soil)</i>	
<i>Today:</i>	0 Loads	0 CY	0 Loads	0 CY	0 Loads	0 CY
<i>Total:</i>	687 Loads	13,740CY	5 Loads	100 CY	44 Loads	880 CY
Sitewide Total			*Note, 1 truck estimated at 20 cubic yards. Final tonnages will be present in the Final Engineering Report (FER)			
<i>Today:</i>	0 Loads	0 CY				
<i>Total:</i>	4,200 Loads	84,000 CY				

- Asphalt disposal is summarized below:

	Facility: Flushing Asphalt Recycling, Flushing NY (Asphalt)		Facility: Mount Materials, Fairless Hills, PA (Asphalt)		Totals:	
Today:	0 Loads	0 CY	0 Loads	0 CY	0 Loads	0 CY
Total:	<u>117 Loads</u>	<u>2,340 CY</u>	<u>43 Loads</u>	<u>860 CY</u>	<u>160 Loads</u>	<u>3,200 CY</u>

*Note, 1 truck estimated at 20 cubic yards. Final tonnages will be present in the Final Engineering Report (FER)

- C&D disposal is summarized below:

	Facility: Mount Materials, Fairless Hills, PA (Non-Haz Concrete)		Totals:	
Today:	0 Loads	0 CY	0 Loads	0 CY
Total:	<u>224 Loads</u>	<u>4,480 CY</u>	<u>224 Loads</u>	<u>4,480 CY</u>

*Note, 1 truck estimated at 20 cubic yards. Final tonnages will be present in the Final Engineering Report (FER)

Material Import:

- Material import is summarized below:

	Facility: Mount Hope Quarry, Wharton, NJ (ASTM #57)		Facility: Mount Hope Quarry, Wharton, NJ (ASTM #3)		Totals:	
Today:	8 Loads	201.51 Tons	2 Loads	48.63 Tons	10 Loads	250.14 Tons
Total:	<u>39 Loads</u>	<u>960.63 Tons</u>	<u>33 loads</u>	<u>804.97 Tons</u>	<u>72 Loads</u>	<u>1,765.6 Tons</u>

Injection Tracking:

- ZVI injections were completed on February 1, 2024, in Lot 14.
- ISCO injections were completed on February 12, 2024, in Lot 53.

Samples Collected:

- No samples collected.

CAMP Activities:

- Air monitoring during ground-intrusive activities was performed at four locations during ground intrusive between 7:15 am to 12:00 pm. No 15-minute average concentration of volatiles organic compounds (VOCs) or particulate 15-minute average concentration of matter smaller than 10 microns in diameter (PM10) exceeded the action levels. No visible dust was observed leaving the site perimeter.

Activities Planned for Coming Week:

- Contractor (International Concrete) will continue stockpiling soil at Lots 14 and 53 for disposal.
- Contractor (International Concrete) will continue transportation and disposal of soil/fill to approved facilities.
- Contractor (International Concrete) will continue footing and subgrade preparation in Lots 14 and 53.

Site Photographs:



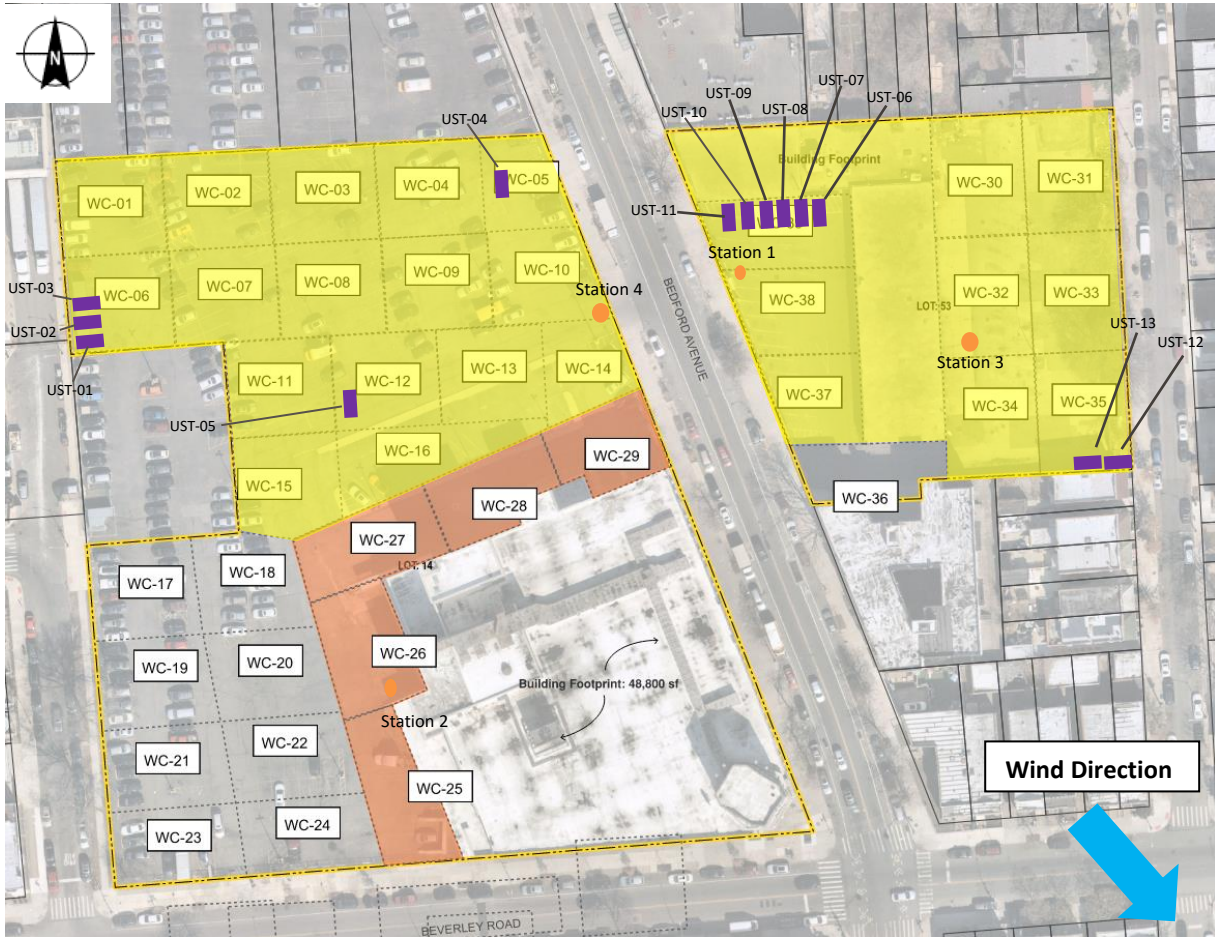
Photo 1: View of site conditions in Lot 53, facing east.



Photo 2: View of site conditions in Lot 14, facing northwest.

Site Plan:

Reference: Waste Characterization Letter Figure 3 Grid Location Map, prepared by Haley & Aldrich, dated October 2023



LEGEND:

- Area of work
- CAMP Station
- Stockpile Location (soil/fill)
- Stockpile location (C&D)
- UST

2360 Bedford Avenue, Brooklyn NY

Air Monitoring Log

Date : 2024-03-29

Personnel : E. Nunez
 Weather : Cloudy
 Humidity : 58%
 Wind Direction : NW to SE, 13 mph

Particulate Background (ug/m3) : 4.882
 PID Background (ppm) : 0.0

Action Levels : Downwind perimeter of work area above background levels
 PID (ppm) : > 5 ppm for the 15-min average
 Dust (ug/m3) : > 150 for the 15-min average

Minute of Time	Avg. PM10 (Station1)	Avg. PM10 (Station2)	Avg. PM10 (Station3)	Avg. PM10 (Station4)	Avg. VOC(Station1)	Avg. VOC(Station2)	Avg. VOC(Station3)	Avg. VOC(Station4)	Odors	Notes Activities/ Additional Monitoring
07:15	6.583	4.091	9.800	4.882	0.0	0.0	0.0	0.0		
07:30	6.921	4.520	9.490	4.997	0.0	0.0	0.0	0.0		
07:45	7.125	5.154	6.218	5.337	0.0	0.0	0.0	0.0		
08:00	7.538	7.572	7.129	6.112	0.0	0.0	0.0	0.0		
08:15	8.433	14.446	7.592	6.890	0.0	0.0	0.0	0.0		
08:30	8.779	9.138	7.868	7.441	0.0	0.0	0.0	0.0		
08:45	8.927	6.867	7.553	6.668	0.0	0.0	0.0	0.0		
09:00	8.909	6.383	7.474	5.908	0.0	0.0	0.0	0.0		
09:15	8.997	5.900	7.115	6.024	0.0	0.0	0.0	0.0		
09:30	8.415	6.482	5.946	5.707	0.0	0.0	0.0	0.0		
09:45	8.159	5.876	8.185	5.172	0.0	0.0	0.0	0.0		
10:00	7.322	5.034	6.644	5.070	0.0	0.0	0.0	0.0		
10:15	10.155	5.147	7.560	4.851	0.0	0.0	0.0	0.0		
10:30	9.455	4.517	6.080	4.853	0.0	0.0	0.0	0.0		
10:45	9.708	4.212	7.881	4.416	0.0	0.0	0.0	0.0		

2360 Bedford Avenue, Brooklyn NY

Air Monitoring Log

Minute of Time	Avg. PM10 (Station1)	Avg. PM10 (Station2)	Avg. PM10 (Station3)	Avg. PM10 (Station4)	Avg. VOC(Station1)	Avg. VOC(Station2)	Avg. VOC(Station3)	Avg. VOC(Station4)	Odors	Notes Activities/ Additional Monitoring
11:00	8.856	4.897	7.265	4.3	0.0	0.0	0.0	0.0		
11:15	7.751	5.076	8.221	5.1	0.0	0.0	0.0	0.0		
11:30	8.986	3.895	6.651	4.6	0.0	0.0	0.0	0.0		
11:45	8.487	3.741	6.070	4.9	0.0	0.0	0.0	0.0		
12:00		3.849				0.0				