



DAILY FIELD REPORT

Project	Bedford Beverly Brownfield Site	Report No.	130
BCP Site	BCP Site No. C224384	Date	04/09/2024
Location	2359 and 2360 Bedford Avenue, Brooklyn, NY	File No.	0205432
Client	Bedford Beverly Acquisitions LLC	Temperature	48-71°F
Contractor	Haley & Aldrich, Maman Contracting (Maman), International Concrete	Wind Direction	WNW to ESE, 4 mph
Weather	Sunny	Personnel on Site	E. Nunez
Humidity	67%	Time on Site	6:45 am to 2:30pm

Haley & Aldrich of New York Engineering and Geology, LLP (Haley & Aldrich) was present to document implementation of the January 2024 NYSDEC-approved Remedial Action Work Plan (RAWP) prepared by Haley & Aldrich for the Bedford Beverly BCP Site (C224384), located at 2359 and 2360 Bedford Avenue, Brooklyn, NY. Site observations are summarized below.

Daily Observations:

- Contractor (International Concrete) continued support of excavation (SOE) and foundation installation within Lot 14 and Lot 53.
- Contractor (International Concrete) continued footing and subgrade preparation in Lots 14 and 53.

Waste Disposal/Backfill Import Tracking:

Material Export:

- Soil/Fill disposal is summarized below:

	<i>Facility: Bayshore Soil Management, Keasbey, NJ (Non-Haz Soil)</i>		<i>Facility: P Park NJ LLC, Prospect Park, NJ (Non-Haz Soil)</i>		<i>Facility: Keystone Trade Center, Fairless Hills, PA (Non-Haz Soil)</i>	
<i>Today:</i>	0 Loads	0 CY	0 Loads	0 CY	0 Loads	0 CY
<i>Total:</i>	<u>447 Loads</u>	<u>8,940 CY</u>	<u>2,083 Loads</u>	<u>41,660 CY</u>	<u>866 Loads</u>	<u>17,320 CY</u>
	<i>Facility: Posillico Materials Permitted Wash Plant, LLC, Farmingdale, NY (Non-Haz Soil)</i>		<i>Facility: Republic Environmental Systems, LLC, Hatfield PA (Haz Soil)</i>		<i>Facility: Conestoga Republic Environmental Systems, LLC, Prospect Park, NJ (Non-Haz Soil)</i>	
<i>Today:</i>	0 Loads	0 CY	0 Loads	0 CY	0 Loads	0 CY
<i>Total:</i>	<u>687 Loads</u>	<u>13,740CY</u>	<u>5 Loads</u>	<u>100 CY</u>	<u>44 Loads</u>	<u>880 CY</u>
Sitewide Total			*Note, 1 truck estimated at 20 cubic yards. Final tonnages will be present in the Final Engineering Report (FER)			
<i>Today:</i>	0 Loads	0 CY				
<i>Total:</i>	<u>4,200 Loads</u>	<u>84,000 CY</u>				

- Asphalt disposal is summarized below:

	Facility: Flushing Asphalt Recycling, Flushing NY (Asphalt)		Facility: Mount Materials, Fairless Hills, PA (Asphalt)		Totals:	
Today:	0 Loads	0 CY	0 Loads	0 CY	0 Loads	0 CY
Total:	<u>117 Loads</u>	<u>2,340 CY</u>	<u>43 Loads</u>	<u>860 CY</u>	<u>160 Loads</u>	<u>3,200 CY</u>

*Note, 1 truck estimated at 20 cubic yards. Final tonnages will be present in the Final Engineering Report (FER)

- C&D disposal is summarized below:

	Facility: Mount Materials, Fairless Hills, PA (Non-Haz Concrete)		Totals:	
Today:	0 Loads	0 CY	0 Loads	0 CY
Total:	<u>224 Loads</u>	<u>4,480 CY</u>	<u>224 Loads</u>	<u>4,480 CY</u>

*Note, 1 truck estimated at 20 cubic yards. Final tonnages will be present in the Final Engineering Report (FER)

Material Import:

- Material import is summarized below:

	Facility: Mount Hope Quarry, Wharton, NJ (ASTM #57)		Facility: Mount Hope Quarry, Wharton, NJ (ASTM #3)		Totals:	
Today:	0 Loads	0 Tons	0 Loads	0 Tons	0 Loads	0 Tons
Total:	<u>38 Loads</u>	<u>934.41 Tons</u>	<u>34 loads</u>	<u>829.67 Tons</u>	<u>72 Loads</u>	<u>1,763.7 Tons</u>

Injection Tracking:

- ZVI injections were completed on February 1, 2024, in Lot 14.
- ISCO injections were completed on February 12, 2024, in Lot 53.

Samples Collected:

- No samples collected.

CAMP Activities:

- Air monitoring during ground-intrusive activities was performed at four locations during ground intrusive between 7:15 am to 1:45 pm. No 15-minute average concentration of volatiles organic compounds (VOCs) or particulate 15-minute average concentration of matter smaller than 10 microns in diameter (PM10) exceeded the action levels. No visible dust was observed leaving the site perimeter.

Activities Planned for Coming Week:

- Contractor (International Concrete) will continue stockpiling soil at Lots 14 and 53 for disposal.
- Contractor (International Concrete) will continue transportation and disposal of soil/fill to approved facilities.
- Contractor (International Concrete) will continue footing and subgrade preparation in Lots 14 and 53.

Site Photographs:



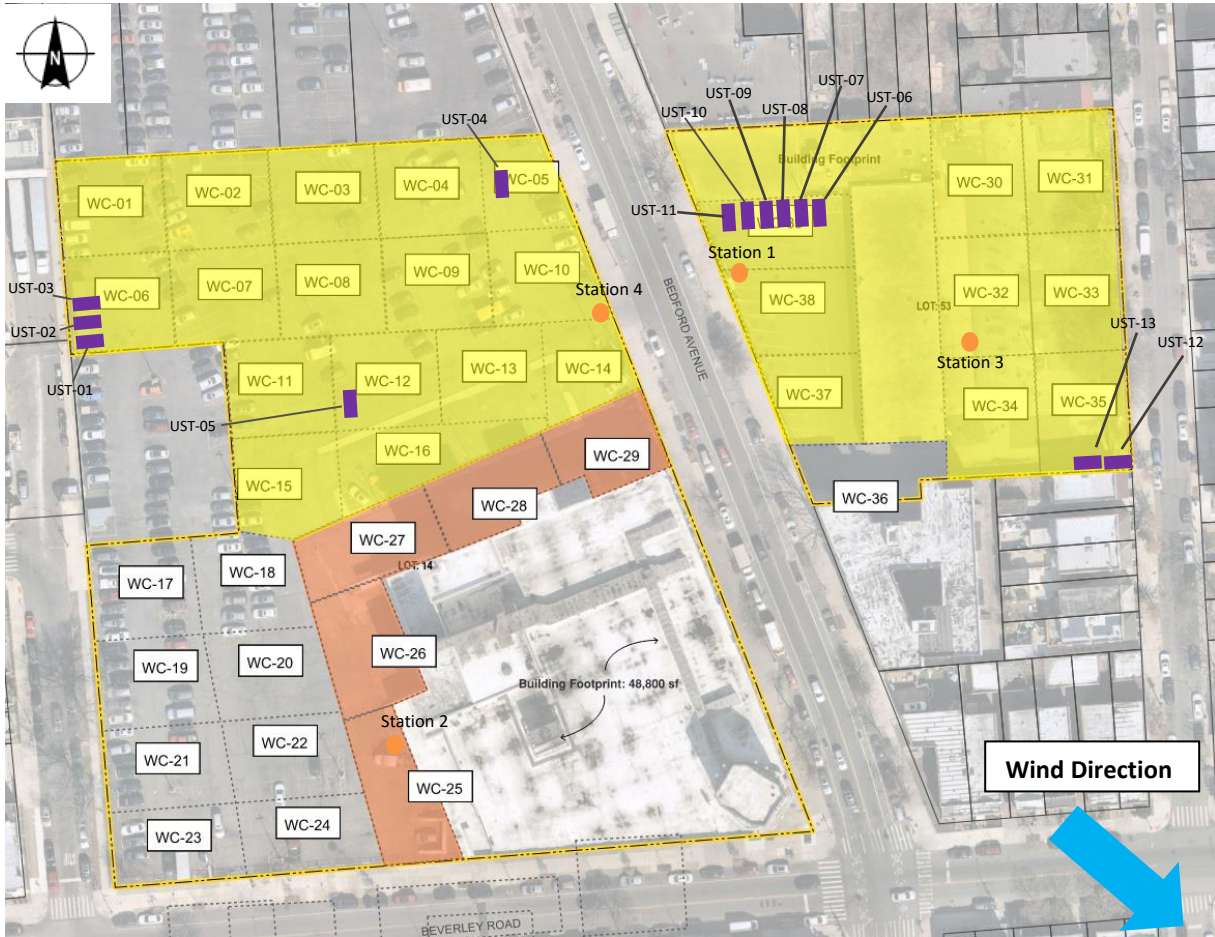
Photo 1: View of site conditions in Lot 14, facing west.



Photo 2: View of site conditions on Lot 53, facing east.

Site Plan:

Reference: Waste Characterization Letter Figure 3 Grid Location Map, prepared by Haley & Aldrich, dated October 2023



LEGEND:

- Area of work
- CAMP Station
- Stockpile Location (soil/fill)
- Stockpile location (C&D)
- UST

2360 Bedford Avenue, Brooklyn NY

Air Monitoring Log

Date : 2024-04-09

Personnel : E. Nunez
 Weather : Sunny
 Humidity : 67%
 Wind Direction : WNW to ESE, 4 mph

Particulate Background (ug/m3) : 15.917
 PID Background (ppm) : 0.0

Action Levels : Downwind perimeter of work area above background levels
 PID (ppm) : > 5 ppm for the 15-min average
 Dust (ug/m3) : > 150 for the 15-min average

Minute of Time	Avg. PM10 (Station1)	Avg. PM10 (Station2)	Avg. PM10 (Station3)	Avg. PM10 (Station4)	Avg. VOC(Station1)	Avg. VOC(Station2)	Avg. VOC(Station3)	Avg. VOC(Station4)	Odors	Notes Activities/ Additional Monitoring
07:15	11.850		8.797	15.917	0.0		0.0	0.0		
07:30	11.305		8.892	12.410	0.0		0.0	0.0		
07:45	9.737	7.403	7.871	10.251	0.1	0.0	0.0	0.0		
08:00	8.662	6.859	7.524	9.570	0.1	0.0	0.0	0.1		
08:15	8.112	6.329	6.531	9.137	0.1	0.0	0.0	0.1		
08:30	6.790	5.775	5.803	9.538	0.1	0.0	0.0	0.0		
08:45	6.090	5.392	5.584	8.543	0.0	0.0	0.0	0.0		
09:00	6.207	5.612	6.650	7.051	0.0	0.0	0.0	0.0		
09:15	8.276	7.019	9.177	8.476	0.0	0.0	0.0	0.0		
09:30	9.950	12.556	8.766	10.511	0.0	0.0	0.0	0.0		
09:45	10.393	10.291	9.178	10.182	0.0	0.0	0.0	0.0		
10:00	9.123	8.419	8.546	9.068	0.0	0.0	0.0	0.0		
10:15	9.623	8.628	8.896	9.437	0.0	0.0	0.0	0.0		
10:30	10.344	9.628	9.436	9.800	0.0	0.0	0.0	0.0		
10:45	9.592	9.629	8.657	9.134	0.0	0.0	0.0	0.0		

2360 Bedford Avenue, Brooklyn NY

Air Monitoring Log

Minute of Time	Avg. PM10 (Station1)	Avg. PM10 (Station2)	Avg. PM10 (Station3)	Avg. PM10 (Station4)	Avg. VOC(Station1)	Avg. VOC(Station2)	Avg. VOC(Station3)	Avg. VOC(Station4)	Odors	Notes Activities/ Additional Monitoring
11:00	8.819	8.232	8.131	9.5	0.0	0.0	0.0	0.0		
11:15	7.222	7.275	6.315	7.1	0.0	0.0	0.0	0.0		
11:30	6.832	6.574	5.987	6.4	0.0	0.0	0.0	0.0		
11:45	6.353	8.435	5.588	6.1	0.0	0.0	0.0	0.0		
12:00	6.438	5.970	5.296	10.8	0.0	0.0	0.0	0.0		
12:15	6.165	5.943	5.498	100.0	0.0	0.0	0.0	0.0		
12:30	7.109	7.880	6.183	66.6	0.0	0.0	0.0	0.0		
12:45	12.616	18.699	8.860	38.7	0.0	0.0	0.0	0.0		
13:00	11.146	11.356	9.045	33.3	0.0	0.0	0.0	0.0		
13:15	13.332	11.065	10.271	26.3	0.0	0.0	0.0	0.0		
13:30	12.918	14.902	11.119	23.4	0.0	0.0	0.0	0.0		
13:45		13.684				0.0				

GIS FILE PATH: \\haleyaldrich.com\hshar\CIP\Projects\2024\GIS\Maps\2023_112024\32_000_0010_PROPOSED_CONF_DOC_SAMPLE_PLAN.mxd — USER: hshar — LAST SAVED: 11/21/2023 10:03:58 AM

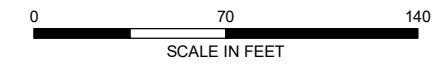


LEGEND

- TRACK 1 UUSCO CONFIRMATION BASE SAMPLE
- TRACK 1 UUSCO CONFIRMATION SIDEWALL SAMPLE
- TRACK 4 DOCUMENTATION SAMPLE
- ENDPOINT SAMPLE GRID
- ▭ SITE BOUNDARY
- ▭ PARCEL BOUNDARY
- ENDPOINT SAMPLE/DOCUMENTATION SAMPLE COLLECTED
- ENDPOINT SAMPLE/DOCUMENTATION SAMPLE NOT COLLECTED

NOTES

1. ALL LOCATIONS AND DIMENSIONS ARE APPROXIMATE.
2. UUSCO = UNRESTRICTED USE SOIL CLEANUP OBJECTIVE
3. ASSESSOR PARCEL DATA SOURCE: KINGS COUNTY
4. AERIAL IMAGERY SOURCE: NEARMAP, 27 FEBRUARY 2022



HALEY ALDRICH BEDFORD BEVERLY BROWNFIELD SITE
2359 AND 2360 BEDFORD AVENUE
BROOKLYN, NEW YORK

**CONFIRMATION/DOCUMENTATION SAMPLE
PROGRESS MAP**

MARCH 2024

FIGURE X