



DAILY FIELD REPORT

Project	Bedford Beverly Brownfield Site	Report No.	172
BCP Site	BCP Site No. C224384	Date	06/24/2024
Location	2359 and 2360 Bedford Avenue, Brooklyn, NY	File No.	0205432
Client	Bedford Beverly Acquisitions LLC	Temperature	70-82 F
Contractor	Haley & Aldrich, Maman Contracting (Maman), International Concrete	Wind Direction	NW to SE, 13 mph
Weather	Sunny	Personnel on Site	E. Nunez
Humidity	69%	Time on Site	7:00am to 2:30pm

Haley & Aldrich of New York Engineering and Geology, LLP (Haley & Aldrich) was present to document implementation of the January 2024 NYSDEC-approved Remedial Action Work Plan (RAWP) prepared by Haley & Aldrich for the Bedford Beverly BCP Site (C224384), located at 2359 and 2360 Bedford Avenue, Brooklyn, NY. Site observations are summarized below.

Daily Observations:

- Contractor (International Concrete) continued support of excavation (SOE) and foundation installation within Lots 14 and Lot 53.
- Contractor (International Concrete) continued footing and subgrade preparation in Lots 14 and 53.

Waste Disposal/Backfill Import Tracking:

Material Export:

- Ten (10) loads of non-hazardous fill material from grids WC-39 (10-15')
- Soil/Fill disposal is summarized below:

	<i>Facility: Bayshore Soil Management, Keasbey, NJ (Non-Haz Soil)</i>		<i>Facility: P Park NJ LLC, Prospect Park, NJ (Non-Haz Soil)</i>		<i>Facility: Keystone Trade Center, Fairless Hills, PA (Non-Haz Soil)</i>	
<i>Today:</i>	0 Loads	0 CY	10 Loads	200 CY	0 Loads	0 CY
<i>Total:</i>	<u>447 Loads</u>	<u>8,940 CY</u>	<u>2,093 Loads</u>	<u>41,860 CY</u>	<u>995 Loads</u>	<u>19,900 CY</u>
	<i>Facility: Posillico Materials Permitted Wash Plant, LLC, Farmingdale, NY (Non-Haz Soil)</i>		<i>Facility: Republic Environmental Systems, LLC, Hatfield PA (Haz Soil)</i>		<i>Facility: Conestoga Republic Environmental Systems, LLC, Prospect Park, NJ (Non-Haz Soil)</i>	
<i>Today:</i>	0 Loads	0 CY	0 Loads	0 CY	0 Loads	0 CY
<i>Total:</i>	<u>687 Loads</u>	<u>13,740 CY</u>	<u>5 Loads</u>	<u>100 CY</u>	<u>44 Loads</u>	<u>880 CY</u>
Sitewide Total						
<i>Today:</i>	10 Loads	200 CY				
<i>Total:</i>	<u>4,339 Loads</u>	<u>86,780 CY</u>				

*Note, 1 truck estimated at 20 cubic yards. Final tonnages will be present in the Final Engineering Report (FER)

- Asphalt disposal is summarized below:

	Facility: Flushing Asphalt Recycling, Flushing NY (Asphalt)		Facility: Mount Materials, Fairless Hills, PA (Asphalt)		Totals:	
Today:	0 Loads	0 CY	0 Loads	0 CY	0 Loads	0 CY
Total:	<u>117 Loads</u>	<u>2,340 CY</u>	<u>43 Loads</u>	<u>860 CY</u>	<u>160 Loads</u>	<u>3,200 CY</u>

*Note, 1 truck estimated at 20 cubic yards. Final tonnages will be present in the Final Engineering Report (FER)

- C&D disposal is summarized below:

	Facility: Mount Materials, Fairless Hills, PA (Non-Haz Concrete)		Totals:	
Today:	0 Loads	0 CY	0 Loads	0 CY
Total:	<u>232 Loads</u>	<u>4,640 CY</u>	<u>232 Loads</u>	<u>4,640 CY</u>

*Note, 1 truck estimated at 20 cubic yards. Final tonnages will be present in the Final Engineering Report (FER)

Material Import:

- Stone import is summarized below:

	Facility: Mount Hope Quarry, Wharton, NJ (ASTM #57)		Facility: Mount Hope Quarry, Wharton, NJ (ASTM #3)		Totals:	
Today:	0 Loads	0 Tons	0 Loads	0 Tons	0 Loads	0 Tons
Total:	<u>104 Loads</u>	<u>2,569.78 Tons</u>	<u>36 loads</u>	<u>878.95 Tons</u>	<u>140 Loads</u>	<u>4,048.73 Tons</u>

- RCA import is summarized below:

	Facility: Allocco Recycling Ltd., Brooklyn, NY (RCA)		Totals:	
Today:	9 Loads	180 CY	9 Loads	180 CY
Total:	<u>95 Loads</u>	<u>1,900 CY</u>	<u>95 Loads</u>	<u>1,900 CY</u>

*Note, 1 truck estimated at 20 cubic yards. Final tonnages will be present in the Final Engineering Report (FER)

Injection Tracking:

- ZVI injections were completed on February 1, 2024, in Lot 14.
- ISCO injections were completed on February 12, 2024, in Lot 53.

Samples Collected:

- None.

CAMP Activities:

- Air monitoring during ground-intrusive activities was performed at four locations during ground intrusive between 7:15 am to 2:00 pm. No 15-minute average concentration of volatiles organic compounds (VOCs) or particulate 15-minute average concentration of matter smaller than 10 microns in diameter (PM10) exceeded the action levels. No visible dust was observed leaving the site perimeter.
- Due to battery issues, visual and olfactory monitoring was conducted at CAMP Station #4 from 8:00 am to 2:00 pm. No visible dust or odors were observed.

Activities Planned for Coming Week:

- Contractor (International Concrete) will continue stockpiling soil at Lots 14 and 53 for disposal.
- Contractor (International Concrete) will continue transportation and disposal of soil/fill to approved facilities.
- Contractor (International Concrete) will continue footing and subgrade preparation in Lots 14 and 53.

Site Photographs:



Photo 1: View of site conditions in Lot 14, facing southwest.



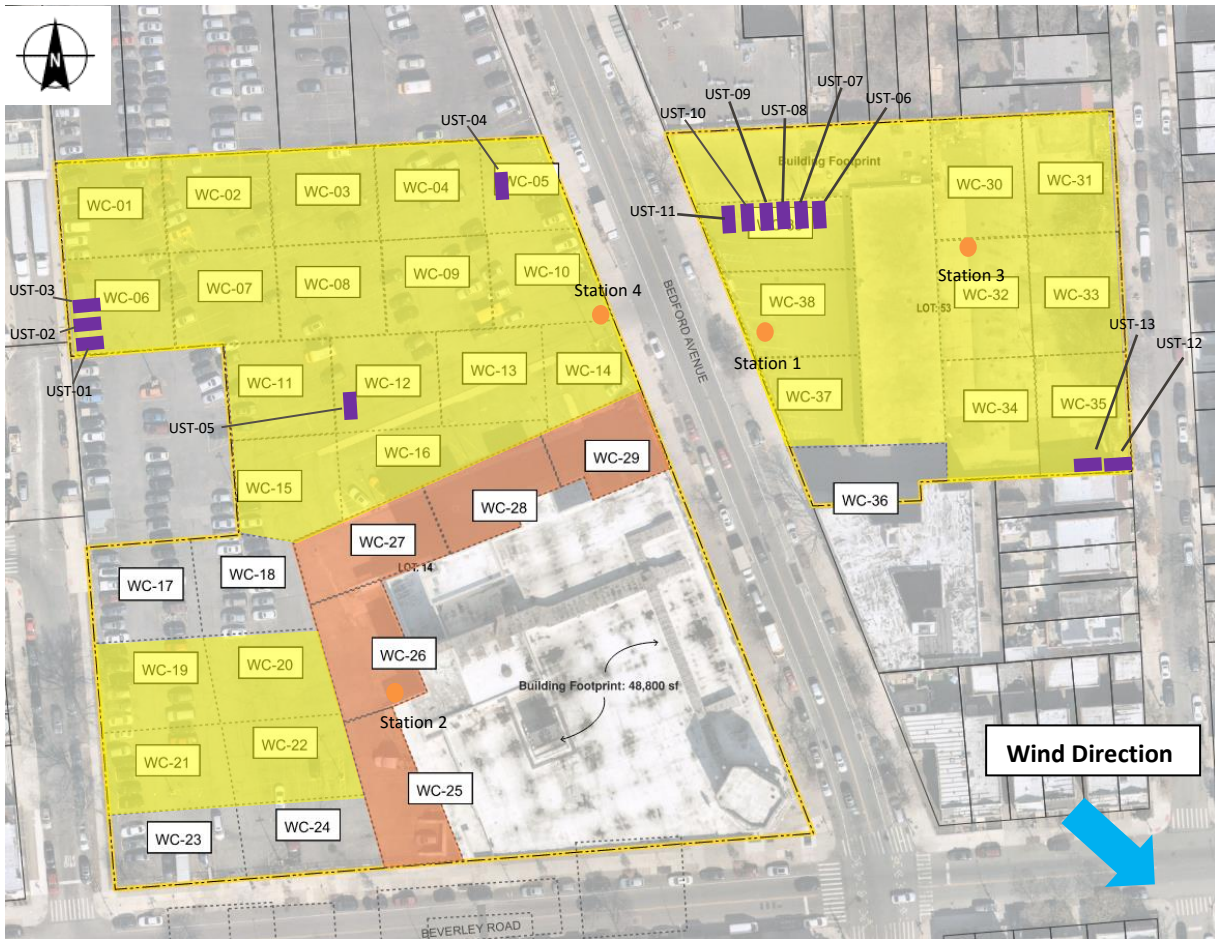
Photo 2: View of site conditions in Lot 53, facing northeast.



Photo 3: View of RCA import in Lot 14, facing east.

Site Plan:

Reference: Waste Characterization Letter Figure 3 Grid Location Map, prepared by Haley & Aldrich, dated October 2023



LEGEND:

- Area of work
- CAMP Station
- Stockpile Location (soil/fill)
- Stockpile location (C&D)
- UST

2360 Bedford Avenue, Brooklyn NY

Air Monitoring Log

Date : 2024-06-24

Personnel : E. Nunez
 Weather : Sunny
 Humidity : 69%
 Wind Direction : NW to SE, 7 mph

Particulate Background (ug/m3) : 9.834
 PID Background (ppm) : 0.0

Action Levels : Downwind perimeter of work area above background levels
 PID (ppm) : > 5 ppm for the 15-min average
 Dust (ug/m3) : > 150 for the 15-min average

Minute of Time	Avg. PM10 (Station1)	Avg. PM10 (Station2)	Avg. PM10 (Station3)	Avg. PM10 (Station4)	Avg. VOC(Station1)	Avg. VOC(Station2)	Avg. VOC(Station3)	Avg. VOC(Station4)	Odors	Notes Activities/ Additional Monitoring
07:15	222.961		8.404	9.834	0.0		0.0	0.0		
07:30	39.857	2.543	7.536	8.671	0.0	0.0	0.0	0.0		
07:45	17.902	11.724	9.230	11.957	0.0	0.1	0.0	0.0		
08:00	21.183	11.742	18.351		0.0	0.0	0.0			
08:15	17.558	8.639	14.999		0.0	0.0	0.0			
08:30	21.342	21.073	17.904		0.0	0.0	0.0			
08:45	18.298	16.530	14.325		0.0	0.0	0.0			
09:00	36.836	16.239	34.651		0.0	0.0	0.0			
09:15	33.050	14.047	29.019		0.0	0.0	0.0			
09:30	31.308	13.495	29.548		0.0	0.0	0.0			
09:45	25.856	19.094	18.853		0.0	0.0	0.0			
10:00	31.135	18.928	29.111		0.0	0.0	0.0			
10:15	23.378	12.802	15.850		0.0	0.0	0.0			
10:30	19.608	15.670	16.917		0.0	0.0	0.0			
10:45	21.132	10.133	19.897		0.0	0.0	0.0			

Due to battery issues, visual and olfactory monitoring was conducted at CAMP Station #4 from 8:00-14:00. No visible dust or odors were observed.

2360 Bedford Avenue, Brooklyn NY

Air Monitoring Log

Minute of Time	Avg. PM10 (Station1)	Avg. PM10 (Station2)	Avg. PM10 (Station3)	Avg. PM10 (Station4)	Avg. VOC(Station1)	Avg. VOC(Station2)	Avg. VOC(Station3)	Avg. VOC(Station4)	Odors	Notes Activities/ Additional Monitoring
11:00	20.488	17.405	20.273		0.0	0.0	0.0			
11:15	20.475	11.905	22.237		0.0	0.0	0.0			
11:30	17.960	10.034	16.418		0.0	0.0	0.0			
11:45	16.591	13.238	13.028		0.0	0.0	0.0			
12:00	19.266	13.249	15.331		0.0	0.0	0.0			
12:15	14.136	12.215	13.949		0.0	0.0	0.0			
12:30	13.075	8.996	11.505		0.0	0.0	0.0			
12:45	33.875	12.719	29.267		0.0	0.0	0.0			
13:00	54.210	12.584	50.180		0.0	0.0	0.0			
13:15	32.139	21.897	28.220		0.0	0.0	0.0			
13:30	37.391	14.169	36.435		0.0	0.0	0.0			
13:45	50.787	16.197	52.707		0.0	0.0	0.0			
14:00	67.570	14.282	69.939		0.0	0.0	0.0			

GIS FILE PATH: \\haleyaldrich.com\hshar\GIS\Projects\2024\GIS\Maps\2023_112024\32_000_0010_PROPOSED_CONF_DOC_SAMPLE_PLAN.mxd — USER: hshar — LAST SAVED: 11/21/2023 10:03:58 AM

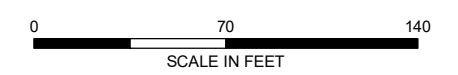


LEGEND

- TRACK 1 UUSCO CONFIRMATION BASE SAMPLE
- TRACK 1 UUSCO CONFIRMATION SIDEWALL SAMPLE
- TRACK 4 DOCUMENTATION SAMPLE
- ENDPOINT SAMPLE GRID
- ▭ SITE BOUNDARY
- ▭ PARCEL BOUNDARY
- ENDPOINT SAMPLE/DOCUMENTATION SAMPLE COLLECTED
- ENDPOINT SAMPLE/DOCUMENTATION SAMPLE NOT COLLECTED

NOTES

1. ALL LOCATIONS AND DIMENSIONS ARE APPROXIMATE.
2. UUSCO = UNRESTRICTED USE SOIL CLEANUP OBJECTIVE
3. ASSESSOR PARCEL DATA SOURCE: KINGS COUNTY
4. AERIAL IMAGERY SOURCE: NEARMAP, 27 FEBRUARY 2022



HALEY ALDRICH BEDFORD BEVERLY BROWNFIELD SITE
 2359 AND 2360 BEDFORD AVENUE
 BROOKLYN, NEW YORK

**CONFIRMATION/DOCUMENTATION SAMPLE
 PROGRESS MAP**

MARCH 2024

FIGURE X