



DAILY FIELD REPORT

Project	Bedford Beverly Brownfield Site	Report No.	192
BCP Site	BCP Site No. C224384	Date	07/23/2024
Location	2359 and 2360 Bedford Avenue, Brooklyn, NY	File No.	0205432
Client	Bedford Beverly Acquisitions LLC	Temperature	73-82°F
Contractor	Haley & Aldrich, Maman Contracting (Maman), International Concrete, GWTT	Wind Direction	NE to SW, 3 mph
Weather	Cloudy	Personnel on Site	E. Nunez
Humidity	96%	Time on Site	8:00am to 3:30pm

Haley & Aldrich of New York Engineering and Geology, LLP (Haley & Aldrich) was present to document implementation of the January 2024 NYSDEC-approved Remedial Action Work Plan (RAWP) prepared by Haley & Aldrich for the Bedford Beverly BCP Site (C224384), located at 2359 and 2360 Bedford Avenue, Brooklyn, NY. Site observations are summarized below.

Daily Observations:

- Contractor (International Concrete) continued support of excavation (SOE) and foundation installation within Lots 14 and Lot 53.
- Contractor (International Concrete) continued footing and subgrade preparation in Lots 14 and 53.

Waste Disposal/Backfill Import Tracking:

Material Export:

- Soil/Fill disposal is summarized below:

	<i>Facility: Bayshore Soil Management, Keasbey, NJ (Non-Haz Soil)</i>		<i>Facility: P Park NJ LLC, Prospect Park, NJ (Non-Haz Soil)</i>		<i>Facility: Keystone Trade Center, Fairless Hills, PA (Non-Haz Soil)</i>	
<i>Today:</i>	0 Loads	0 CY	0 Loads	0 CY	0 Loads	0 CY
<i>Total:</i>	<u>457 Loads</u>	<u>9,140 CY</u>	<u>2,093 Loads</u>	<u>41,860 CY</u>	<u>995 Loads</u>	<u>19,900 CY</u>
	<i>Facility: Posillico Materials Permitted Wash Plant, LLC, Farmingdale, NY (Non-Haz Soil)</i>		<i>Facility: Republic Environmental Systems, LLC, Hatfield PA (Haz Soil)</i>		<i>Facility: Conestoga Republic Environmental Systems, LLC, Prospect Park, NJ (Non-Haz Soil)</i>	
<i>Today:</i>	0 Loads	0 CY	0 Loads	0 CY	0 Loads	0 CY
<i>Total:</i>	<u>687 Loads</u>	<u>13,740 CY</u>	<u>5 Loads</u>	<u>100 CY</u>	<u>44 Loads</u>	<u>880 CY</u>
Sitewide Total			*Note, 1 truck estimated at 20 cubic yards. Final tonnages will be present in the Final Engineering Report (FER)			
<i>Today:</i>	0 Loads	0 CY				
<i>Total:</i>	<u>4,349 Loads</u>	<u>86,980 CY</u>				

- Asphalt disposal is summarized below:

	Facility: Flushing Asphalt Recycling, Flushing NY (Asphalt)		Facility: Mount Materials, Fairless Hills, PA (Asphalt)		Totals:	
Today:	0 Loads	0 CY	0 Loads	0 CY	0 Loads	0 CY
Total:	<u>117 Loads</u>	<u>2,340 CY</u>	<u>43 Loads</u>	<u>860 CY</u>	<u>160 Loads</u>	<u>3,200 CY</u>

*Note, 1 truck estimated at 20 cubic yards. Final tonnages will be present in the Final Engineering Report (FER)

- C&D disposal is summarized below:

	Facility: Mount Materials, Fairless Hills, PA (Non-Haz Concrete)		Totals:	
Today:	0 Loads	0 CY	0 Loads	0 CY
Total:	<u>232 Loads</u>	<u>4,640 CY</u>	<u>232 Loads</u>	<u>4,640 CY</u>

*Note, 1 truck estimated at 20 cubic yards. Final tonnages will be present in the Final Engineering Report (FER)

Material Import:

- Stone import is summarized below:

	Facility: Mount Hope Quarry, Wharton, NJ (ASTM #57)		Facility: Mount Hope Quarry, Wharton, NJ (ASTM #3)		Totals:	
Today:	0 Loads	0 Tons	0 Loads	0 Tons	0 Loads	0 Tons
Total:	<u>113 Loads</u>	<u>2,802.84 Tons</u>	<u>36 loads</u>	<u>931.33 Tons</u>	<u>149 Loads</u>	<u>3,734.17 Tons</u>

- RCA import is summarized below:

	Facility: Allocco Recycling Ltd., Brooklyn, NY (RCA)		Totals:	
Today:	0 Loads	0 CY	0 Loads	0 CY
Total:	<u>125 Loads</u>	<u>2,500 CY</u>	<u>125 Loads</u>	<u>2,500 CY</u>

*Note, 1 truck estimated at 20 cubic yards. Final tonnages will be present in the Final Engineering Report (FER)

Injection Tracking:

- ZVI injections were completed on February 1, 2024, in Lot 14.
- ISCO injections were completed on February 12, 2024, in Lot 53.

Samples Collected:

- None.

CAMP Activities:

- Air monitoring during ground-intrusive activities was performed at four locations between 8:00 am to 2:45 pm.
- No 15-minute average concentration of volatiles organic compounds (VOCs) or particulate 15-minute average concentration of matter smaller than 10 microns in diameter (PM10) exceeded the action levels. No visible dust was observed leaving the site perimeter.

Activities Planned for Coming Week:

- Contractor (International Concrete) will continue stockpiling soil at Lots 14 and 53 for disposal.
- Contractor (International Concrete) will continue transportation and disposal of soil/fill to approved facilities.
- Contractor (International Concrete) will continue footing and subgrade preparation in Lots 14 and 53.

Site Photographs:



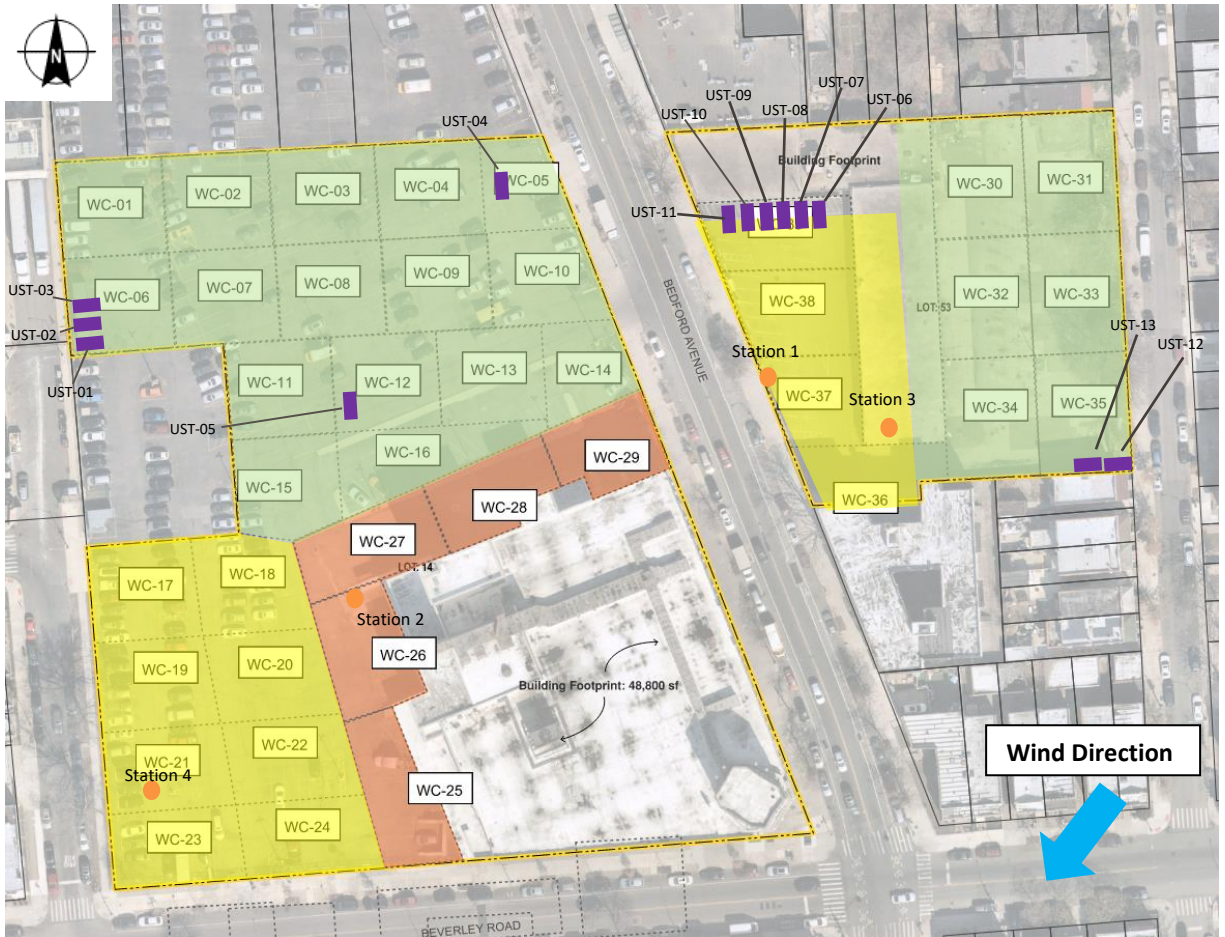
Photo 1: View of site conditions in Lot 53, facing east.



Photo 2: View of site conditions in Lot 14, west.

Site Plan:

Reference: Waste Characterization Letter Figure 3 Grid Location Map, prepared by Haley & Aldrich, dated October 2023



LEGEND:

- Area of work (below-grade)
- Area of work (above-grade)
- CAMP Station
- Stockpile Location (soil/fill)
- Stockpile location (C&D)
- Former UST Location

2360 Bedford Avenue, Brooklyn NY

Air Monitoring Log

Date : 2024-07-23

Personnel : E. Nunez

Weather : Cloudy

Humidity : 96%

Wind Direction : NE to SW, 3 mph

Particulate Background (ug/m3) : 9.827

PID Background (ppm) : 0.0

Action Levels : Downwind perimeter of work area above background levels

PID (ppm) : > 5 ppm for the 15-min average

Dust (ug/m3) : > 150 for the 15-min average

Minute of Time	Avg. PM10 (Station1)	Avg. PM10 (Station2)	Avg. PM10 (Station3)	Avg. PM10 (Station4)	Avg. VOC(Station1)	Avg. VOC(Station2)	Avg. VOC(Station3)	Avg. VOC(Station4)	Odors	Notes Activities/ Additional Monitoring
08:00	9.827	10.080	37.626	8.242	0.0	0.0	0.0	0.0		
08:15	5.738	11.026	15.689	5.785	0.0	0.0	0.0	0.0		
08:30	5.059	4.607	8.765	4.537	0.0	0.0	0.0	0.0		
08:45	3.979	4.751	5.936	4.416	0.0	0.0	0.0	0.0		
09:00	4.622	6.082	6.304	3.572	0.0	0.0	0.0	0.0		
09:15	4.924	7.525	8.355	5.135	0.0	0.0	0.0	0.0		
09:30	5.751	8.135	8.546	6.858	0.0	0.0	0.0	0.0		
09:45	6.919	8.552	19.099	5.038	0.1	0.0	0.0	0.0		
10:00	5.333	7.359	18.334	4.797	0.0	0.0	0.0	0.0		
10:15	6.432	6.905	14.403	5.103	0.0	0.0	0.0	0.0		
10:30	6.061	6.594	33.761	4.796	0.0	0.0	0.0	0.0		
10:45	5.546	22.192	24.954	4.884	0.0	0.0	0.0	0.0		

2360 Bedford Avenue, Brooklyn NY

Air Monitoring Log

Minute of Time	Avg. PM10 (Station1)	Avg. PM10 (Station2)	Avg. PM10 (Station3)	Avg. PM10 (Station4)	Avg. VOC(Station1)	Avg. VOC(Station2)	Avg. VOC(Station3)	Avg. VOC(Station4)	Odors	Notes Activities/ Additional Monitoring
11:00	5.046	8.426	14.320	4.7	0.0	0.0	0.0	0.0		
11:15	5.116	6.735	13.797	4.5	0.0	0.0	0.0	0.0		
11:30	5.569	7.030	6.142	4.8	0.0	0.0	0.0	0.0		
11:45	8.685	9.790	7.924	4.6	0.0	0.0	0.0	0.0		
12:00	7.627	8.409	6.934	5.4	0.0	0.0	0.0	0.0		
12:15	6.695	8.472	5.798	4.9	0.0	0.0	0.0	0.0		
12:30	7.573	11.522	7.682	6.2	0.0	0.0	0.0	0.0		
12:45	10.579	11.445	9.492	8.0	0.0	0.0	0.0	0.0		
13:00	8.204	10.043	7.616	7.0	0.0	0.0	0.0	0.0		
13:15	6.545	10.793	36.774	6.8	0.0	0.0	0.0	0.0		
13:30	9.577	11.618	36.853	10.1	0.0	0.0	0.0	0.0		
13:45	9.845	8.351	9.905	7.9	0.0	0.0	0.0	0.0		
14:00	9.767	15.690	9.761	10.0	0.0	0.0	0.0	0.0		
14:15	9.676	10.597		8.4	0.0	0.0		0.0		
14:30	9.921				0.0					
14:45	8.906				0.0					

GIS FILE PATH: \\haleyaldrich.com\hshar\GIS\Projects\2024\GIS\Maps\2023_112024\32_000_0010_PROPOSED_CONF_DOC_SAMPLE_PLAN.mxd — USER: hshar — LAST SAVED: 11/21/2023 10:03:58 AM

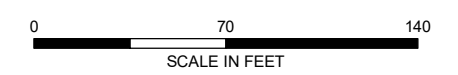
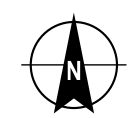


LEGEND

- TRACK 1 UUSCO CONFIRMATION BASE SAMPLE
- TRACK 1 UUSCO CONFIRMATION SIDEWALL SAMPLE
- TRACK 4 DOCUMENTATION SAMPLE
- ENDPOINT SAMPLE GRID
- ▭ SITE BOUNDARY
- ▭ PARCEL BOUNDARY
- ENDPOINT SAMPLE/DOCUMENTATION SAMPLE COLLECTED
- ENDPOINT SAMPLE/DOCUMENTATION SAMPLE NOT COLLECTED

NOTES

1. ALL LOCATIONS AND DIMENSIONS ARE APPROXIMATE.
2. UUSCO = UNRESTRICTED USE SOIL CLEANUP OBJECTIVE
3. ASSESSOR PARCEL DATA SOURCE: KINGS COUNTY
4. AERIAL IMAGERY SOURCE: NEARMAP, 27 FEBRUARY 2022



HALEY ALDRICH BEDFORD BEVERLY BROWNFIELD SITE
2359 AND 2360 BEDFORD AVENUE
BROOKLYN, NEW YORK

**CONFIRMATION/DOCUMENTATION SAMPLE
PROGRESS MAP**

MARCH 2024

FIGURE X