



# DAILY FIELD REPORT

<b>Project</b>	Bedford Beverly Brownfield Site	<b>Report No.</b>	196
<b>BCP Site</b>	BCP Site No. C224384	<b>Date</b>	07/29/2024
<b>Location</b>	2359 and 2360 Bedford Avenue, Brooklyn, NY	<b>File No.</b>	0205432
<b>Client</b>	Bedford Beverly Acquisitions LLC	<b>Temperature</b>	69-84 °F
<b>Contractor</b>	Haley & Aldrich, Maman Contracting (Maman), International Concrete	<b>Wind Direction</b>	S to N, 8 mph
<b>Weather</b>	Cloudy	<b>Personnel on Site</b>	E. Nunez
<b>Humidity</b>	78%	<b>Time on Site</b>	7:30am to 2:30pm

Haley & Aldrich of New York Engineering and Geology, LLP (Haley & Aldrich) was present to document implementation of the January 2024 NYSDEC-approved Remedial Action Work Plan (RAWP) prepared by Haley & Aldrich for the Bedford Beverly BCP Site (C224384), located at 2359 and 2360 Bedford Avenue, Brooklyn, NY. Site observations are summarized below.

**Daily Observations:**

- Contractor (International Concrete) continued support of excavation (SOE) and foundation installation within Lots 14 and Lot 53.
- Contractor (International Concrete) continued footing and subgrade preparation in Lots 14 and 53.

**Waste Disposal/Backfill Import Tracking:**

**Material Export:**

- Soil/Fill disposal is summarized below:

	<i>Facility: Bayshore Soil Management, Keasbey, NJ (Non-Haz Soil)</i>		<i>Facility: P Park NJ LLC, Prospect Park, NJ (Non-Haz Soil)</i>		<i>Facility: Keystone Trade Center, Fairless Hills, PA (Non-Haz Soil)</i>	
<i>Today:</i>	0 Loads	0 CY	0 Loads	0 CY	0 Loads	0 CY
<i>Total:</i>	<u>479 Loads</u>	<u>9,580 CY</u>	<u>2,093 Loads</u>	<u>41,860 CY</u>	<u>995 Loads</u>	<u>19,900 CY</u>
	<i>Facility: Posillico Materials Permitted Wash Plant, LLC, Farmingdale, NY (Non-Haz Soil)</i>		<i>Facility: Republic Environmental Systems, LLC, Hatfield PA (Haz Soil)</i>		<i>Facility: Conestoga Republic Environmental Systems, LLC, Prospect Park, NJ (Non-Haz Soil)</i>	
<i>Today:</i>	0 Loads	0 CY	0 Loads	0 CY	0 Loads	0 CY
<i>Total:</i>	<u>687 Loads</u>	<u>13,740 CY</u>	<u>5 Loads</u>	<u>100 CY</u>	<u>44 Loads</u>	<u>880 CY</u>
<b>Sitewide Total</b>			*Note, 1 truck estimated at 20 cubic yards. Final tonnages will be present in the Final Engineering Report (FER)			
<i>Today:</i>	0 Loads	0 CY				
<i>Total:</i>	<u>4,371 Loads</u>	<u>87,420 CY</u>				

- Asphalt disposal is summarized below:

	Facility: Flushing Asphalt Recycling, Flushing NY (Asphalt)		Facility: Mount Materials, Fairless Hills, PA (Asphalt)		Totals:	
Today:	0 Loads	0 CY	0 Loads	0 CY	0 Loads	0 CY
Total:	<u>117 Loads</u>	<u>2,340 CY</u>	<u>43 Loads</u>	<u>860 CY</u>	<u>160 Loads</u>	<u>3,200 CY</u>

\*Note, 1 truck estimated at 20 cubic yards. Final tonnages will be present in the Final Engineering Report (FER)

- C&D disposal is summarized below:

	Facility: Mount Materials, Fairless Hills, PA (Non-Haz Concrete)		Totals:	
Today:	0 Loads	0 CY	0 Loads	0 CY
Total:	<u>232 Loads</u>	<u>4,640 CY</u>	<u>232 Loads</u>	<u>4,640 CY</u>

\*Note, 1 truck estimated at 20 cubic yards. Final tonnages will be present in the Final Engineering Report (FER)

**Material Import:**

- Stone import is summarized below:

	Facility: Mount Hope Quarry, Wharton, NJ (ASTM #57)		Facility: Mount Hope Quarry, Wharton, NJ (ASTM #3)		Totals:	
Today:	0 Loads	0 Tons	0 Loads	0 Tons	0 Loads	0 Tons
Total:	<u>114 Loads</u>	<u>2,827.84 Tons</u>	<u>36 loads</u>	<u>931.33 Tons</u>	<u>149 Loads</u>	<u>3,758.97 Tons</u>

- RCA import is summarized below:

	Facility: Allocco Recycling Ltd., Brooklyn, NY (RCA)		Totals:	
Today:	0 Loads	0 CY	0 Loads	0 CY
Total:	<u>125 Loads</u>	<u>2,500 CY</u>	<u>125 Loads</u>	<u>2,500 CY</u>

\*Note, 1 truck estimated at 20 cubic yards. Final tonnages will be present in the Final Engineering Report (FER)

**Injection Tracking:**

- ZVI injections were completed on February 1, 2024, in Lot 14.
- ISCO injections were completed on February 12, 2024, in Lot 53.

**Samples Collected:**

- None.

**CAMP Activities:**

- Air monitoring during ground-intrusive activities was performed at four locations between 8:45 am to 1:45 pm.
- No 15-minute average concentration of volatiles organic compounds (VOCs) or particulate 15-minute average concentration of matter smaller than 10 microns in diameter (PM10) exceeded the action levels. No visible dust was observed leaving the site perimeter.

**Activities Planned for Coming Week:**

- Contractor (International Concrete) will continue footing and subgrade preparation in Lots 14 and 53.

**Site Photographs:**



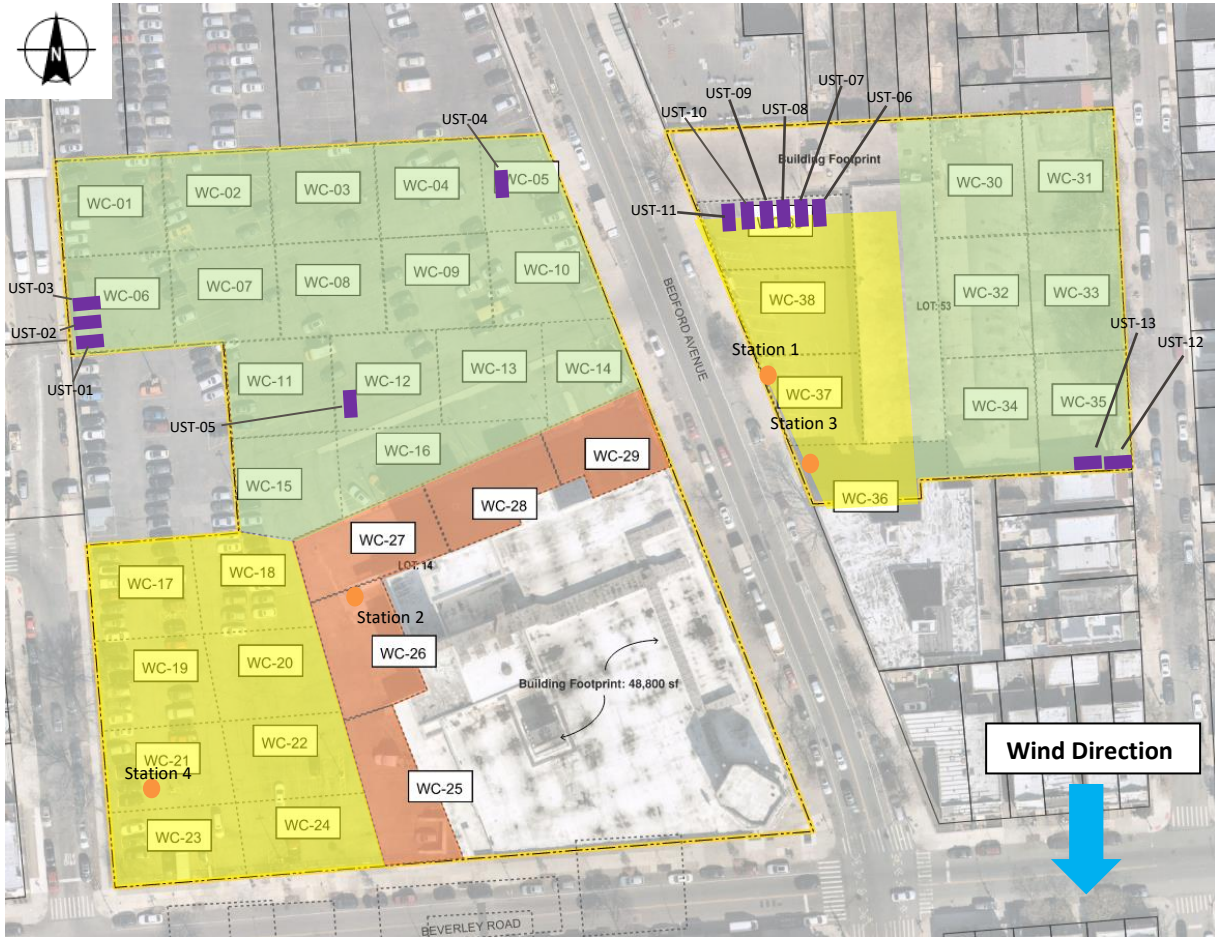
*Photo 1: View of footing preparation in Lot 53, facing north.*



*Photo 2: View of site conditions in Lot 14, facing southwest.*

### Site Plan:

Reference: Waste Characterization Letter Figure 3 Grid Location Map, prepared by Haley & Aldrich, dated October 2023



### LEGEND:

- Area of work (below-grade)
- Area of work (above-grade)
- CAMP Station
- Stockpile Location (soil/fill)
- Stockpile location (C&D)
- Former UST Location

2360 Bedford Avenue, Brooklyn NY

Air Monitoring Log

Date : 2024-07-29

Personnel : E. Nunez  
 Weather : Cloudy  
 Humidity : 78%  
 Wind Direction : S to N, 8 mph

Particulate Background (ug/m3) : 18.295  
 PID Background (ppm) : 0.0

Action Levels : Downwind perimeter of work area above background levels  
 PID (ppm) : > 5 ppm for the 15-min average  
 Dust (ug/m3) : > 150 for the 15-min average

Minute of Time	Avg. PM10 (Station1)	Avg. PM10 (Station2)	Avg. PM10 (Station3)	Avg. PM10 (Station4)	Avg. VOC(Station1)	Avg. VOC(Station2)	Avg. VOC(Station3)	Avg. VOC(Station4)	Odors	Notes Activities/ Additional Monitoring
08:45	18.295	18.819	69.788	17.429	0.0	0.0	0.0	0.0		
09:00	16.962	23.438	47.827	18.069	0.0	0.0	0.0	0.0		
09:15	16.721	23.438	32.550	18.692	0.0	0.0	0.0	0.0		
09:30	16.751	18.330	19.954	19.001	0.0	0.0	0.0	0.0		
09:45	16.597	21.826	35.982	19.865	0.0	0.0	0.0	0.0		
10:00	21.051	20.386	21.317	19.073	0.0	0.0	0.0	0.0		
10:15	18.068	22.379	18.423	17.687	0.0	0.0	0.0	0.0		
10:30	16.653	19.359	17.518	15.039	0.0	0.0	0.0	0.0		
10:45	17.050	17.408	15.650	27.245	0.0	0.0	0.0	0.0		

2360 Bedford Avenue, Brooklyn NY

Air Monitoring Log

Minute of Time	Avg. PM10 (Station1)	Avg. PM10 (Station2)	Avg. PM10 (Station3)	Avg. PM10 (Station4)	Avg. VOC(Station1)	Avg. VOC(Station2)	Avg. VOC(Station3)	Avg. VOC(Station4)	Odors	Notes Activities/ Additional Monitoring
11:00	13.967	19.974	14.972	16.7	0.0	0.0	0.0	0.0		
11:15	13.665	19.043	14.381	13.5	0.0	0.0	0.0	0.0		
11:30	13.289	19.675	16.417	18.0	0.0	0.0	0.0	0.1		
11:45	13.050	21.088	13.928	12.7	0.0	0.0	0.0	0.0		
12:00	15.159		13.769	13.9	0.0		0.0	0.0		
12:15	15.007		14.972	16.5	0.0		0.0	0.0		
12:30	16.452		15.858	21.1	0.0		0.0	0.0		
12:45	16.695	19.647	15.552	23.9	0.0	0.0	0.0	0.0		
13:00	15.978	19.860	14.866	74.2	0.0	0.0	0.0	0.0		
13:15	15.814	18.798	15.156	42.9	0.0	0.0	0.0	0.0		
13:30	16.751	17.626	16.114	32.0	0.0	0.0	0.0	0.0		
13:45		16.700		27.9		0.0		0.0		

GIS FILE PATH: \\haleyaldrich.com\hshar\GIS\Projects\2024\GIS\Maps\2023\_112024\32\_000\_0010\_PROPOSED\_CONF\_DOC\_SAMPLE\_PLAN.mxd — USER: hshar — LAST SAVED: 11/21/2023 10:03:58 AM

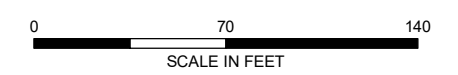
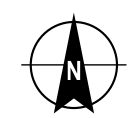


**LEGEND**

- TRACK 1 UUSCO CONFIRMATION BASE SAMPLE
- TRACK 1 UUSCO CONFIRMATION SIDEWALL SAMPLE
- TRACK 4 DOCUMENTATION SAMPLE
- ENDPOINT SAMPLE GRID
- ▭ SITE BOUNDARY
- ▭ PARCEL BOUNDARY
- ENDPOINT SAMPLE/DOCUMENTATION SAMPLE COLLECTED
- ENDPOINT SAMPLE/DOCUMENTATION SAMPLE NOT COLLECTED

**NOTES**

1. ALL LOCATIONS AND DIMENSIONS ARE APPROXIMATE.
2. UUSCO = UNRESTRICTED USE SOIL CLEANUP OBJECTIVE
3. ASSESSOR PARCEL DATA SOURCE: KINGS COUNTY
4. AERIAL IMAGERY SOURCE: NEARMAP, 27 FEBRUARY 2022



**HALEY ALDRICH** BEDFORD BEVERLY BROWNFIELD SITE  
2359 AND 2360 BEDFORD AVENUE  
BROOKLYN, NEW YORK

**CONFIRMATION/DOCUMENTATION SAMPLE  
PROGRESS MAP**

MARCH 2024

FIGURE X