

Project	Bedford Beverly Brownfield Site	Report No.	197
BCP Site	BCP Site No. C224384	Date	07/30/2024
Location	2359 and 2360 Bedford Avenue, Brooklyn, NY	File No.	0205432
Client	Bedford Beverly Acquisitions LLC	Temperature	77-87 °F
Contractor	Haley & Aldrich, Maman Contracting (Maman), International Concrete	Wind Direction	S to N, 9 mph
Weather	Sunny	Personnel on Site	C. Jackson
Humidity	80%	Time on Site	8:25am to 5:45pm

Haley & Aldrich of New York Engineering and Geology, LLP (Haley & Aldrich) was present to document implementation of the January 2024 NYSDEC-approved Remedial Action Work Plan (RAWP) prepared by Haley & Aldrich for the Bedford Beverly BCP Site (C224384), located at 2359 and 2360 Bedford Avenue, Brooklyn, NY. Site observations are summarized below.

Daily Observations:

- Contractor (International Concrete) continued installation of foundation elements within Lots 14 and Lot 53.
- Contractor (International Concrete) imported #57 stone from Tilcon of Mount Hope Quarry in Wharton, NJ.

Waste Disposal/Backfill Import Tracking:

Material Export:

- Soil/Fill disposal is summarized below:

	<i>Facility: Bayshore Soil Management, Keasbey, NJ (Non-Haz Soil)</i>		<i>Facility: P Park NJ LLC, Prospect Park, NJ (Non-Haz Soil)</i>		<i>Facility: Keystone Trade Center, Fairless Hills, PA (Non-Haz Soil)</i>	
<i>Today:</i>	0 Loads	0 CY	0 Loads	0 CY	0 Loads	0 CY
<i>Total:</i>	<u>479 Loads</u>	<u>9,580 CY</u>	<u>2,093 Loads</u>	<u>41,860 CY</u>	<u>995 Loads</u>	<u>19,900 CY</u>
	<i>Facility: Posillico Materials Permitted Wash Plant, LLC, Farmingdale, NY (Non-Haz Soil)</i>		<i>Facility: Republic Environmental Systems, LLC, Hatfield PA (Haz Soil)</i>		<i>Facility: Conestoga Republic Environmental Systems, LLC, Prospect Park, NJ (Non-Haz Soil)</i>	
<i>Today:</i>	0 Loads	0 CY	0 Loads	0 CY	0 Loads	0 CY
<i>Total:</i>	<u>687 Loads</u>	<u>13,740 CY</u>	<u>5 Loads</u>	<u>100 CY</u>	<u>44 Loads</u>	<u>880 CY</u>
Sitewide Total			*Note, 1 truck estimated at 20 cubic yards. Final tonnages will be present in the Final Engineering Report (FER)			
<i>Today:</i>	0 Loads	0 CY				
<i>Total:</i>	<u>4,371 Loads</u>	<u>87,420 CY</u>				

- Asphalt disposal is summarized below:

	Facility: Flushing Asphalt Recycling, Flushing NY (Asphalt)		Facility: Mount Materials, Fairless Hills, PA (Asphalt)		Totals:	
Today:	0 Loads	0 CY	0 Loads	0 CY	0 Loads	0 CY
Total:	<u>117 Loads</u>	<u>2,340 CY</u>	<u>43 Loads</u>	<u>860 CY</u>	<u>160 Loads</u>	<u>3,200 CY</u>

*Note, 1 truck estimated at 20 cubic yards. Final tonnages will be present in the Final Engineering Report (FER)

- C&D disposal is summarized below:

	Facility: Mount Materials, Fairless Hills, PA (Non-Haz Concrete)		Totals:	
Today:	0 Loads	0 CY	0 Loads	0 CY
Total:	<u>232 Loads</u>	<u>4,640 CY</u>	<u>232 Loads</u>	<u>4,640 CY</u>

*Note, 1 truck estimated at 20 cubic yards. Final tonnages will be present in the Final Engineering Report (FER)

Material Import:

- Four (4) loads of #57 stone were imported to the Site from Tilcon of Mount Hope Wuarry in Wharton, NJ

- Stone import is summarized below:

	Facility: Mount Hope Quarry, Wharton, NJ (ASTM #57)		Facility: Mount Hope Quarry, Wharton, NJ (ASTM #3)		Totals:	
Today:	4 Loads	98.09 Tons	0 Loads	0 Tons	4 Loads	98.09 Tons
Total:	<u>118 Loads</u>	<u>2,925.93 Tons</u>	<u>36 loads</u>	<u>931.33 Tons</u>	<u>154 Loads</u>	<u>3,857.26 Tons</u>

- RCA import is summarized below:

	Facility: Allocco Recycling Ltd., Brooklyn, NY (RCA)		Totals:	
Today:	0 Loads	0 CY	0 Loads	0 CY
Total:	<u>125 Loads</u>	<u>2,500 CY</u>	<u>125 Loads</u>	<u>2,500 CY</u>

*Note, 1 truck estimated at 20 cubic yards. Final tonnages will be present in the Final Engineering Report (FER)

Injection Tracking:

- ZVI injections were completed on February 1, 2024, in Lot 14.
- ISCO injections were completed on February 12, 2024, in Lot 53.

Samples Collected:

- None.

CAMP Activities:

- Air monitoring during ground-intrusive activities was performed at four locations between 8:30 am to 5:30 pm.
- No 15-minute average concentration of volatiles organic compounds (VOCs) or particulate 15-minute average concentration of matter smaller than 10 microns in diameter (PM10) exceeded the action levels. No visible dust was observed leaving the site perimeter.

Activities Planned for Coming Week:

- Contractor (International Concrete) will continue footing and subgrade preparation in Lots 14 and 53.

Site Photographs:



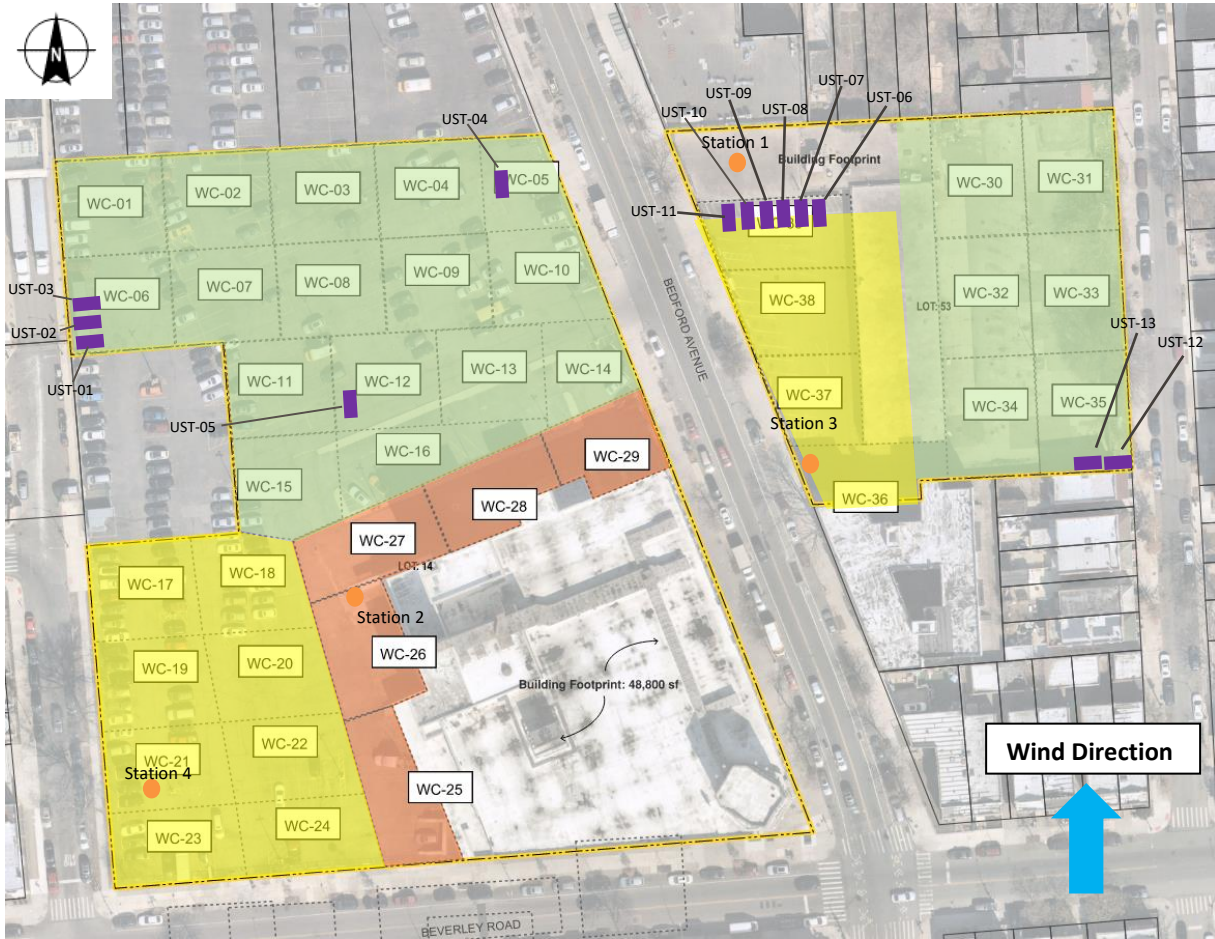
Photo 1: View of footing preparation in Lot 53, facing east.



Photo 2: View of site conditions in Lot 14, facing southwest.

Site Plan:

Reference: Waste Characterization Letter Figure 3 Grid Location Map, prepared by Haley & Aldrich, dated October 2023



LEGEND:

- Area of work (below-grade)
- Area of work (above-grade)
- CAMP Station
- Stockpile Location (soil/fill)
- Stockpile location (C&D)
- Former UST Location

GIS FILE PATH: \\haleyaldrich.com\hshar\CIP\Projects\2024\GIS\Maps\2023_11\2024\32_000_0010_PROPOSED_CONF_DOC_SAMPLE_PLAN.mxd — USER: hshar — LAST SAVED: 11/21/2023 10:03:58 AM

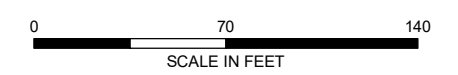


LEGEND

- TRACK 1 UUSCO CONFIRMATION BASE SAMPLE
- TRACK 1 UUSCO CONFIRMATION SIDEWALL SAMPLE
- TRACK 4 DOCUMENTATION SAMPLE
- ENDPOINT SAMPLE GRID
- ▭ SITE BOUNDARY
- ▭ PARCEL BOUNDARY
- ENDPOINT SAMPLE/DOCUMENTATION SAMPLE COLLECTED
- ENDPOINT SAMPLE/DOCUMENTATION SAMPLE NOT COLLECTED

NOTES

1. ALL LOCATIONS AND DIMENSIONS ARE APPROXIMATE.
2. UUSCO = UNRESTRICTED USE SOIL CLEANUP OBJECTIVE
3. ASSESSOR PARCEL DATA SOURCE: KINGS COUNTY
4. AERIAL IMAGERY SOURCE: NEARMAP, 27 FEBRUARY 2022



HALEY ALDRICH BEDFORD BEVERLY BROWNFIELD SITE
 2359 AND 2360 BEDFORD AVENUE
 BROOKLYN, NEW YORK

**CONFIRMATION/DOCUMENTATION SAMPLE
 PROGRESS MAP**

MARCH 2024

FIGURE X

2360 Bedford Avenue, Brooklyn NY

Air Monitoring Log

Date : 2024-07-30

Personnel : C. Jackson
 Weather : Sunny
 Humidity : 80%
 Wind Direction : S to N, 9 mph

Particulate Background (ug/m3) : 18.753
 PID Background (ppm) : 0.0

Action Levels : Downwind perimeter of work area above background levels

PID (ppm) : > 5 ppm for the 15-min average

Dust (ug/m3) : > 150 for the 15-min average

Minute of Time	Avg. PM10 (Station1)	Avg. PM10 (Station2)	Avg. PM10 (Station3)	Avg. PM10 (Station4)	Avg. VOC(Station1)	Avg. VOC(Station2)	Avg. VOC(Station3)	Avg. VOC(Station4)	Odors	Notes Activities/ Additional Monitoring
08:30	17.620	17.585		18.753	0.0	0.0		0.0		
08:45	14.323	17.086	16.864	21.128	0.0	0.0	0.0	0.1		
09:00	13.051	14.897	14.150	20.695	0.0	0.0	0.0	0.0		
09:15	12.601	12.475	13.104	18.846	0.0	0.0	0.0	0.0		
09:30	13.468	14.907	12.761	16.537	0.0	0.0	0.0	0.0		
09:45	12.524	12.394	13.333	18.656	0.0	0.0	0.0	0.0		
10:00	13.153	12.084	12.512	20.743	0.0	0.0	0.0	0.0		
10:15	12.103	12.585	12.233	20.580	0.0	0.0	0.0	0.0		
10:30	12.904	12.614	12.979	16.670	0.0	0.0	0.0	0.0		
10:45	14.085	12.151	13.224	16.812	0.0	0.0	0.0	0.0		

2360 Bedford Avenue, Brooklyn NY

Air Monitoring Log

Minute of Time	Avg. PM10 (Station1)	Avg. PM10 (Station2)	Avg. PM10 (Station3)	Avg. PM10 (Station4)	Avg. VOC(Station1)	Avg. VOC(Station2)	Avg. VOC(Station3)	Avg. VOC(Station4)	Odors	Notes Activities/ Additional Monitoring
11:00	14.523	12.597	14.562	16.9	0.0	0.0	0.0	0.0		
11:15	15.628	11.421	13.316	18.9	0.0	0.0	0.0	0.0		
11:30	14.341	12.213	13.933	33.2	0.0	0.0	0.0	0.2		
11:45	12.080	12.319	13.034	25.6	0.0	0.0	0.0	0.1		
12:00	13.147	11.920	11.448	15.1	0.0	0.0	0.0	0.0		
12:15	23.158	12.225	11.727	15.1	0.0	0.0	0.0	0.0		
12:30	13.432	11.395	13.616	13.5	0.0	0.0	0.0	0.0		
12:45	13.592	13.690	16.556	18.3	0.0	0.0	0.0	0.0		
13:00	13.811	11.885	16.715	28.4	0.0	0.0	0.0	0.0		
13:15	14.029	19.724	22.778	15.0	0.0	0.0	0.0	0.0		
13:30	15.297	19.290	17.110	15.1	0.0	0.0	0.0	0.0		
13:45	16.749	25.875	15.532	26.7	0.0	0.0	0.0	0.0		
14:00	14.236	21.075	16.090	14.1	0.0	0.0	0.0	0.0		
14:15	14.894	20.260	21.492	16.6	0.0	0.0	0.0	0.0		
14:30	13.399	24.139	26.738	14.5	0.0	0.0	0.0	0.0		
14:45	12.765	20.809	21.563	14.5	0.0	0.0	0.0	0.0		
15:00	13.149	22.359	19.715	13.4	0.0	0.0	0.0	0.0		
15:15	12.075	18.195	16.199	12.3	0.0	0.0	0.0	0.0		
15:30	11.457	16.914	12.068	12.7	0.0	0.0	0.0	0.0		
15:45	12.618	16.111	11.475	12.5	0.0	0.0	0.0	0.0		
16:00	14.523	16.391	13.768	13.1	0.0	0.0	0.0	0.0		
16:15	11.193	14.122	16.677	11.3	0.0	0.0	0.0	0.0		
16:30	13.975	13.203	15.314	10.7	0.0	0.0	0.0	0.0		
16:45	26.839	14.576	16.620	11.0	0.0	0.0	0.0	0.0		
17:00	19.147	13.920	17.843	11.1	0.0	0.0	0.0	0.0		
17:15	16.687	13.191	15.434	11.2	0.0	0.0	0.0	0.0		