



DAILY FIELD REPORT

Project	Bedford Beverly Brownfield Site	Report No.	200
BCP Site	BCP Site No. C224384	Date	08/02/2024
Location	2359 and 2360 Bedford Avenue, Brooklyn, NY	File No.	0205432
Client	Bedford Beverly Acquisitions LLC	Temperature	72-81°F
Contractor	Haley & Aldrich, Maman Contracting (Maman), International Concrete	Wind Direction	SW to NE, 8 mph
Weather	Cloudy	Personnel on Site	E. Nunez
Humidity	90%	Time on Site	7:30 am to 4:30pm

Haley & Aldrich of New York Engineering and Geology, LLP (Haley & Aldrich) was present to document implementation of the January 2024 NYSDEC-approved Remedial Action Work Plan (RAWP) prepared by Haley & Aldrich for the Bedford Beverly BCP Site (C224384), located at 2359 and 2360 Bedford Avenue, Brooklyn, NY. Site observations are summarized below.

Daily Observations:

- Contractor (International Concrete) continued installation of foundation elements within Lots 14 and Lot 53.

Waste Disposal/Backfill Import Tracking:

Material Export:

- None.
- Soil/Fill disposal is summarized below:

	<i>Facility: Bayshore Soil Management, Keasbey, NJ (Non-Haz Soil)</i>		<i>Facility: P Park NJ LLC, Prospect Park, NJ (Non-Haz Soil)</i>		<i>Facility: Keystone Trade Center, Fairless Hills, PA (Non-Haz Soil)</i>	
<i>Today:</i>	0 Loads	0 CY	0 Loads	0 CY	0 Loads	0 CY
<i>Total:</i>	<u>449 Loads</u>	<u>9,580 CY</u>	<u>2,093 Loads</u>	<u>41,860 CY</u>	<u>955 Loads</u>	<u>19,900 CY</u>
	<i>Facility: Posillico Materials Permitted Wash Plant, LLC, Farmingdale, NY (Non-Haz Soil)</i>		<i>Facility: Republic Environmental Systems, LLC, Hatfield PA (Haz Soil)</i>		<i>Facility: Conestoga Republic Environmental Systems, LLC, Prospect Park, NJ (Non-Haz Soil)</i>	
<i>Today:</i>	0 Loads	0 CY	0 Loads	0 CY	0 Loads	0 CY
<i>Total:</i>	<u>687 Loads</u>	<u>13,740CY</u>	<u>5 Loads</u>	<u>100 CY</u>	<u>44 Loads</u>	<u>880 CY</u>
Sitewide Total			*Note, 1 truck estimated at 20 cubic yards. Final tonnages will be present in the Final Engineering Report (FER)			
<i>Today:</i>	0 Loads	0 CY				
<i>Total:</i>	<u>4,371 Loads</u>	<u>87,420 CY</u>				

- Asphalt disposal is summarized below:

	Facility: Flushing Asphalt Recycling, Flushing NY (Asphalt)		Facility: Mount Materials, Fairless Hills, PA (Asphalt)		Totals:	
Today:	0 Loads	0 CY	0 Loads	0 CY	0 Loads	0 CY
Total:	<u>117 Loads</u>	<u>2,340 CY</u>	<u>43 Loads</u>	<u>860 CY</u>	<u>160 Loads</u>	<u>3,200 CY</u>

*Note, 1 truck estimated at 20 cubic yards. Final tonnages will be present in the Final Engineering Report (FER)

- C&D disposal is summarized below:

	Facility: Mount Materials, Fairless Hills, PA (Non-Haz Concrete)		Totals:	
Today:	0 Loads	0 CY	0 Loads	0 CY
Total:	<u>232 Loads</u>	<u>4,640 CY</u>	<u>232 Loads</u>	<u>4,640 CY</u>

*Note, 1 truck estimated at 20 cubic yards. Final tonnages will be present in the Final Engineering Report (FER)

Material Import:

- None.
- Stone import is summarized below:

	Facility: Mount Hope Quarry, Wharton, NJ (ASTM #57)		Facility: Mount Hope Quarry, Wharton, NJ (ASTM #3)		Totals:	
Today:	0 Loads	0 Tons	0 Loads	0 Tons	0 Loads	0 Tons
Total:	<u>118 Loads</u>	<u>2,925.93 Tons</u>	<u>36 loads</u>	<u>931.33 Tons</u>	<u>154 Loads</u>	<u>3,857.26 Tons</u>

- RCA import is summarized below:

	Facility: Allocco Recycling Ltd., Brooklyn, NY (RCA)		Totals:	
Today:	0 Loads	0 CY	0 Loads	0 CY
Total:	<u>125 Loads</u>	<u>2,500 CY</u>	<u>125 Loads</u>	<u>2,500 CY</u>

*Note, 1 truck estimated at 20 cubic yards. Final tonnages will be present in the Final Engineering Report (FER)

Injection Tracking:

- ZVI injections were completed on February 1, 2024, in Lot 14.
- ISCO injections were completed on February 12, 2024, in Lot 53.

Samples Collected:

- Three groundwater samples (PR-MW-01_20240802, PR-MW-02_20240802, PR-MW-04_20240802) was collected and submitted to Eurofins for analysis.
- One duplicate sample and one trip blank were submitted.

CAMP Activities:

- Air monitoring during ground-intrusive activities was performed at two locations during ground intrusive between 8:45 am to 4:30 pm.
- No 15-minute average concentration of volatiles organic compounds (VOCs) or particulate 15-minute average concentration of matter smaller than 10 microns in diameter (PM10) exceeded the action levels. No visible dust was observed leaving the site perimeter.

Activities Planned for Coming Week:

- Contractor (International Concrete) will continue footing and subgrade preparation in Lots 14 and 53.

Site Photographs:



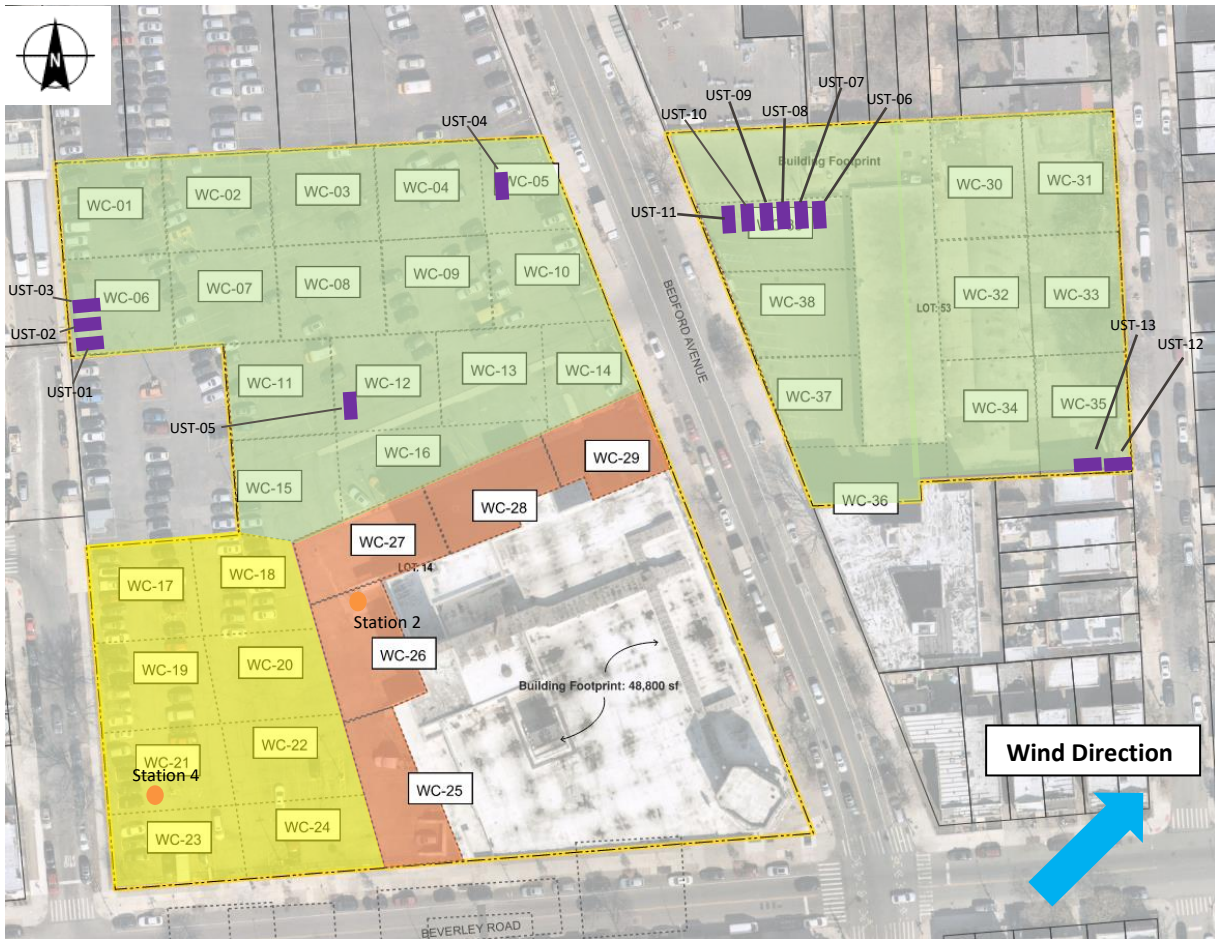
Photo 1: View of site conditions in Lot 14, facing west.



Photo 2: View of groundwater sampling setup at monitoring well PR-MW-01, facing north.

Site Plan:

Reference: Waste Characterization Letter Figure 3 Grid Location Map, prepared by Haley & Aldrich, dated October 2023



LEGEND:

- Area of work
- CAMP Station
- Stockpile Location (soil/fill)
- Stockpile Location (C&D)
- Former UST Location

2360 Bedford Avenue, Brooklyn NY

Air Monitoring Log

Date : 2024-08-02

Personnel : E. Nunez
 Weather : Cloudy
 Humidity : 90%
 Wind Direction : SW to NE, 8 mph

Particulate Background (ug/m3) : 21.28
 PID Background (ppm) : 0.0

Action Levels : Downwind perimeter of work area above background levels
 PID (ppm) : > 5 ppm for the 15-min average
 Dust (ug/m3) : > 150 for the 15-min average

Minute of Time	Avg. PM10 (Station1)	Avg. PM10 (Station2)	Avg. PM10 (Station3)	Avg. PM10 (Station4)	Avg. VOC(Station1)	Avg. VOC(Station2)	Avg. VOC(Station3)	Avg. VOC(Station4)	Odors	Notes Activities/ Additional Monitoring
08:45		32.222				0.0				
09:00		26.217		21.280		0.1		0.0		
09:15		21.381		19.805		0.1		0.0		
09:30		21.586		17.261		0.1		0.0		
09:45		22.713		16.517		0.1		0.0		
10:00		22.408		19.195		0.1		0.0		
10:15		20.768		20.219		0.0		0.0		
10:30		21.776		19.464		0.1		0.0		
10:45		24.274		19.803		0.0		0.0		

2360 Bedford Avenue, Brooklyn NY

Air Monitoring Log

Minute of Time	Avg. PM10 (Station1)	Avg. PM10 (Station2)	Avg. PM10 (Station3)	Avg. PM10 (Station4)	Avg. VOC(Station1)	Avg. VOC(Station2)	Avg. VOC(Station3)	Avg. VOC(Station4)	Odors	Notes Activities/ Additional Monitoring
11:00		24.091		20.8		0.1		0.0		
11:15		22.608		18.8		0.1		0.0		
11:30		22.730		18.1		0.1		0.0		
11:45		21.459		17.5		0.1		0.0		
12:00		18.242		16.3		0.1		0.0		
12:15		18.257		16.0		0.1		0.0		
12:30		17.593		15.6		0.1		0.0		
12:45		16.643		16.3		0.1		0.0		
13:00		15.544		17.0		0.1		0.0		
13:15		15.474		16.1		0.0		0.0		
13:30		14.140		14.3		0.0		0.0		
13:45		13.914		12.9		0.0		0.0		
14:00		14.274		12.0		0.0		0.0		
14:15		14.697		11.4		0.0		0.0		
14:30		14.582		10.7		0.0		0.0		
14:45		13.895		10.2		0.0		0.0		
15:00		13.255		10.7		0.0		0.0		
15:15		12.759		13.6		0.0		0.0		
15:30		13.681		12.8		0.0		0.0		
15:45		14.490		12.5		0.0		0.0		
16:00		14.600		12.3		0.0		0.0		
16:15		13.851				0.0				
16:30		14.026				0.0				

GIS FILE PATH: \\haleyaldrich.com\hshar\GIS\Projects\2024\GIS\Maps\2023_11\2024\32_000_0010_PROPOSED_CONF_DOC_SAMPLE_PLAN.mxd — USER: hshar — LAST SAVED: 11/21/2023 10:03:58 AM

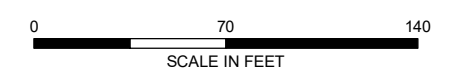
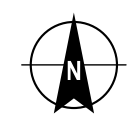


LEGEND

- TRACK 1 UUSCO CONFIRMATION BASE SAMPLE
- TRACK 1 UUSCO CONFIRMATION SIDEWALL SAMPLE
- TRACK 4 DOCUMENTATION SAMPLE
- ENDPOINT SAMPLE GRID
- ▭ SITE BOUNDARY
- ▭ PARCEL BOUNDARY
- ENDPOINT SAMPLE/DOCUMENTATION SAMPLE COLLECTED
- ENDPOINT SAMPLE/DOCUMENTATION SAMPLE NOT COLLECTED

NOTES

1. ALL LOCATIONS AND DIMENSIONS ARE APPROXIMATE.
2. UUSCO = UNRESTRICTED USE SOIL CLEANUP OBJECTIVE
3. ASSESSOR PARCEL DATA SOURCE: KINGS COUNTY
4. AERIAL IMAGERY SOURCE: NEARMAP, 27 FEBRUARY 2022



HALEY ALDRICH BEDFORD BEVERLY BROWNFIELD SITE
 2359 AND 2360 BEDFORD AVENUE
 BROOKLYN, NEW YORK

**CONFIRMATION/DOCUMENTATION SAMPLE
 PROGRESS MAP**

MARCH 2024

FIGURE X