

SITE OBSERVATION REPORT

PROJECT No.: 170747001 PROJECT: C224398 – 1709 Surf Avenue LOCATION: 1709 Surf Avenue, Brooklyn, New York	CLIENT: Coney Island Associates Phase 3 LLC c/o BFC Partners	DATE: Thu, February 20, 2025 WEATHER: Cloudy, 24-34°F Wind: E at 0.6-3.8 mph TIME: 6:45am to 3:45pm
CONTRACTOR'S EQUIPMENT: CAT 328DLCR Excavator Doosan DX300LC Excavator Bobcat 566 Skid Steer	PRESENT AT SITE: RAWP Implementation Day 1 Environmental (Langan) – Michael Pinnella General Contractor (BFC Construction) Foundation Contractor (Precise Contracting [Precise]) Deep Foundation Contractor (Morris-Shea Bridge Co., Inc. [Morris-Shea])	
OBSERVATIONS, DISCUSSIONS, TEST RESULTS, ETC.: Langan was present to oversee implementation of the November 20, 2024 Remedial Action Work Plan (RAWP) for Brownfield Cleanup Program (BCP) Site No. C224398 at 1709 Surf Avenue. Observed activities were as follows: Site Activities <ul style="list-style-type: none"> Precise used a Doosan DX300LC excavator to remove the asphalt cover in the southwestern part of the site. The asphalt was stockpiled in the southwestern part of the site pending future off-site disposal. Sampling <ul style="list-style-type: none"> No samples were collected. CAMP Activities <ul style="list-style-type: none"> Langan performed community air monitoring at the perimeter of the site at two locations (one downwind and one upwind), and included air monitoring for particulate matter for particulates less than 10 µm in diameter (PM10) and volatile organic compounds (VOC). Particulate and VOC concentrations did not exceed the action levels established in the site Community Air Monitoring Program (CAMP). Fugitive dust or odors associated with intrusive activities were not observed. Anticipated Activities <ul style="list-style-type: none"> Precise will continue to remove the asphalt cover across the site's footprint. Material Tracking <ul style="list-style-type: none"> No material was imported to the site. No material was exported from the site. 		
Cc: B. Gochenaur, K. Semon, M.Aronica (Langan)	By: Michael Pinnella LANGAN	

SITE OBSERVATION REPORT

FIGURE 1: SITE PLAN



Legend:

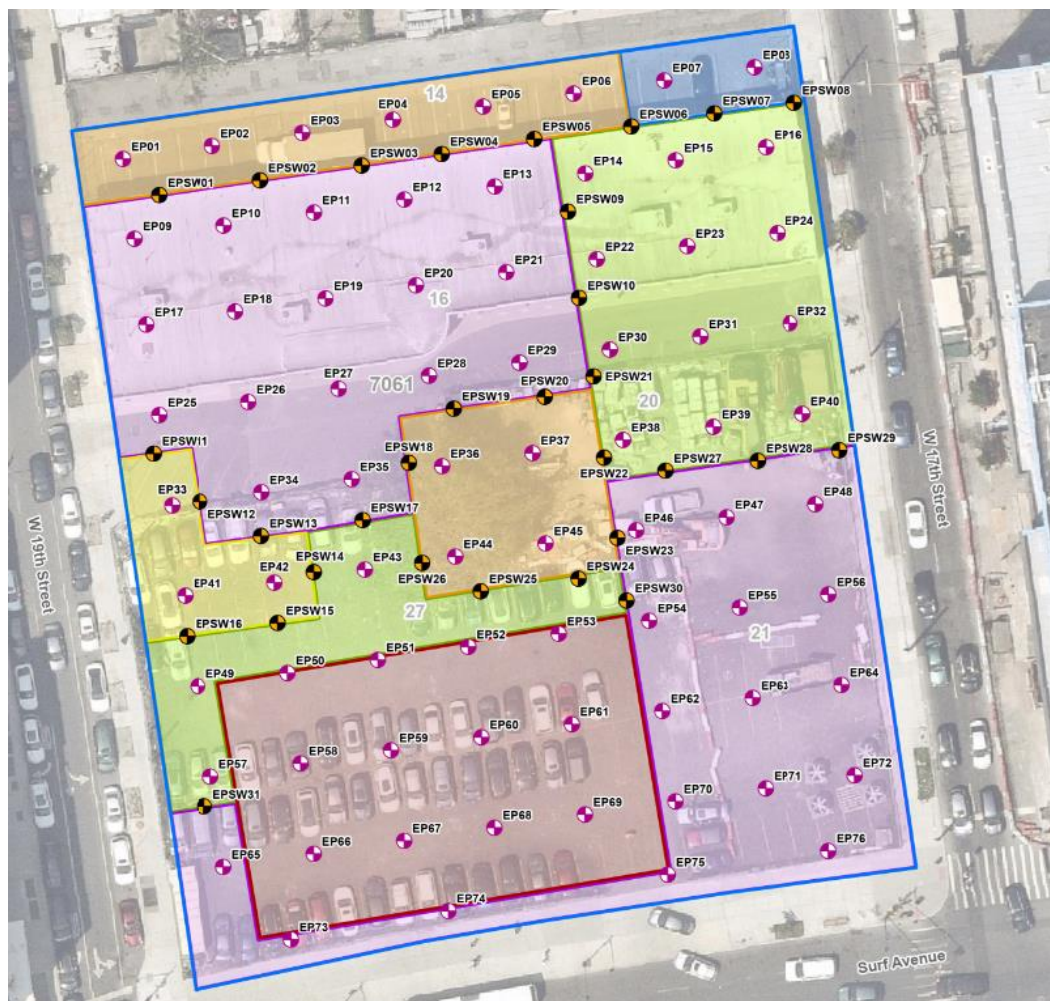
- Upwind CAMP Station
- Downwind CAMP Station
- Prevailing Wind Direction
- Approximate Location of Asphalt Removal
- Approximate Location of Asphalt Stockpile

Note:
The base map is taken from Langan Engineering, Environmental, Surveying, Landscape Architecture & Geology D.P.C. Nearmap Web Portal. Accessed May 28, 2023.

Cc:	B. Gochenaur, K. Semon, M. Aronica (Langan)	By:	Michael Pinnella
			LANGAN

SITE OBSERVATION REPORT

FIGURE 2: ENDPOINT/SIDEWALL SAMPLE LOCATION MAP



Legend

- Approximate Site Boundary
- Excavation to about 2 feet bgs
- Excavation to about 3 feet bgs
- Excavation to about 4 feet bgs
- Excavation to about 5 feet bgs
- Excavation to about 6 feet bgs
- Excavation to about 16 feet bgs to Remove Petroleum Impacts
- Proposed Endpoint Sample Location
- Proposed Sidewall Sample Location

Cc:	B. Gochenaur, K. Semon, M. Aronica (Langan)	By:	Michael Pinnella
			LANGAN

SITE OBSERVATION REPORT

SITE PHOTOGRAPHS



Photo 1: View of Precise removing asphalt in the southwestern part of the site (facing northwest).



Photo 2: General view of the site (facing west).

Cc:	B. Gochenaur, K. Semon, M. Aronica (Langan)	By:	Michael Pinnella
			LANGAN