

SITE OBSERVATION REPORT

<p>PROJECT No.: 170747001</p> <p>PROJECT: C224398 – 1709 Surf Avenue</p> <p>LOCATION: 1709 Surf Avenue, Brooklyn, New York</p>	<p>CLIENT: Coney Island Associates Phase 3 LLC c/o BFC Partners</p>	<p>DATE: Fri, March 21, 2025</p> <p>WEATHER: Partly Cloudy, 37-49°F Wind: E at 1-21 mph</p> <p>TIME: 7:30am to 3:30pm</p>
<p>CONTRACTOR'S EQUIPMENT: Doosan DL 300 Loader CAT 328DLCR Excavator Doosan DX300LC Excavator Bobcat S590 Skid Steer CZM EK300LS Drill Rig CAT 314 CLCR Mini Excavator Bobcat E45 Mini Excavator CAT 345C Excavator</p>	<p>PRESENT AT SITE: RAWP Implementation Day 11 Environmental (Langan) – Erik Orantes General Contractor (BFC Construction) Foundation Contractor (Precise Contracting [Precise]) Deep Foundation Contractor (RYC Turbos Corp.)</p>	
<p>OBSERVATIONS, DISCUSSIONS, TEST RESULTS, ETC.:</p> <p>Langan was present to oversee implementation of the November 20, 2024 Remedial Action Work Plan (RAWP) for Brownfield Cleanup Program (BCP) Site No. C224398 at 1709 Surf Avenue. Observed activities were as follows:</p> <p>Site Activities</p> <ul style="list-style-type: none"> • RYC Turbos Corp. installed two piles in the southern part of the site to a maximum depth of about 100 feet below grade surface (bgs). <ul style="list-style-type: none"> ○ Less than 1 cubic yard of spoils were generated during pile drilling. Spoils consisted of non-hazardous fill/soil and were screened for staining, odors, and instrumental evidence of contamination using a handheld photoionization detector (PID). Evidence of impacts were not observed, and the spoils were graded adjacent to the drilling area. <p>Sampling</p> <ul style="list-style-type: none"> • No samples were collected. <p>CAMP Activities</p> <ul style="list-style-type: none"> • Langan performed community air monitoring at the perimeter of the site at two locations (one downwind and one upwind) and included air monitoring for particulate matter for particulates less than 10 µm in diameter (PM10) and volatile organic compounds (VOC). Particulate and VOC concentrations did not exceed the action levels established in the site Community Air Monitoring Program (CAMP). Fugitive dust or odors associated with intrusive activities were not observed. <p>Anticipated Activities</p> <ul style="list-style-type: none"> • RYC Turbos Corp. will continue to install piles across the site's footprint. 		
<p>Cc:</p>	<p>B. Gochenaur, K. Semon, M.Aronica (Langan)</p>	<p>By: Erik Orantes LANGAN</p>

SITE OBSERVATION REPORT

Material Tracking

- No material was imported to the site.
- No material was exported from the site.







Cc:	B. Gochenaur, K. Semon, M. Aronica (Langan)	By:	Erik Orantes
			LANGAN

SITE OBSERVATION REPORT

FIGURE 1: SITE PLAN



Legend:

-  Upwind CAMP Station
-  Downwind CAMP Station
-  Prevailing Wind Direction
-  Approximate Location of Asphalt Removal Today
-  Approximate Location of Soil/Fill Stockpile
-  Approximate Location of Piles Installed Today
-  Approximate Location of Excavation Today
-  Approximate Location of Grading Today

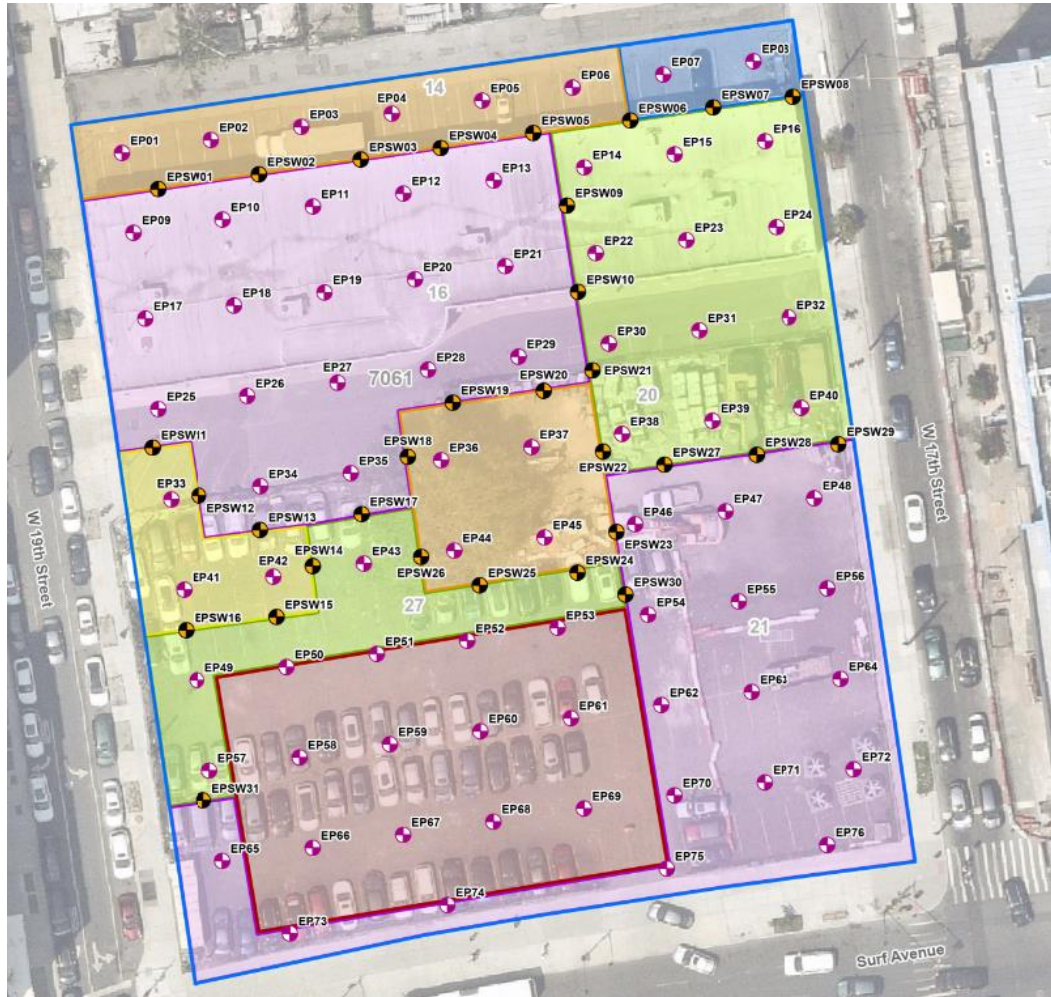
Note:

The base map is taken from Langan Engineering, Environmental, Surveying, Landscape Architecture & Geology D.P.C. Nearmap Web Portal. Accessed May 28, 2023.

Cc:	B. Gochenaur, K. Semon, M. Aronica (Langan)	By:	Erik Orantes
			LANGAN

SITE OBSERVATION REPORT

FIGURE 2: ENDPOINT/SIDEWALL SAMPLE LOCATION MAP



Legend

- Approximate Site Boundary
- Excavation to about 2 feet bgs
- Excavation to about 3 feet bgs
- Excavation to about 4 feet bgs
- Excavation to about 5 feet bgs
- Excavation to about 6 feet bgs
- Excavation to about 16 feet bgs to Remove Petroleum Impacts
- Proposed Endpoint Sample Location
- Proposed Sidewall Sample Location

Cc:	B. Gochenaur, K. Semon, M. Aronica (Langan)	By:	Erik Orantes
			LANGAN

SITE OBSERVATION REPORT

SITE PHOTOGRAPHS

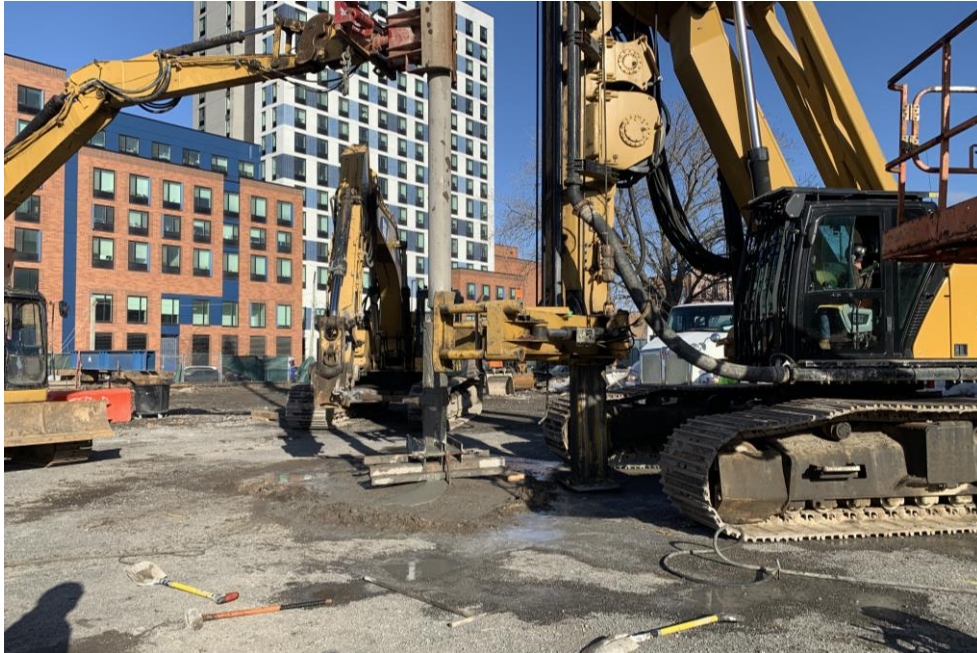


Photo 1: View of RYC Turbos Corp. installing a pile in the southern part of the site (facing northwest).

Cc:	B. Gochenaur, K. Semon, M. Aronica (Langan)	By:	Erik Orantes LANGAN
-----	---	-----	-------------------------------