

## SITE OBSERVATION REPORT

|   |  |   |
|---|--|---|
| <b>PROJECT No.:</b> 170747001<br><b>PROJECT:</b> C224398 – 1709 Surf Avenue<br><b>LOCATION:</b> 1709 Surf Avenue, Brooklyn, New York  | <b>CLIENT:</b><br>Coney Island Associates<br>Phase 3 LLC<br>c/o BFC Partners   | <b>DATE:</b> Wed, April 2, 2025<br><b>WEATHER:</b> Clear, 41-56°F<br>Wind: S at 1-13 mph<br><b>TIME:</b> 7:00am to 2:00pm |
| <b>CONTRACTOR'S EQUIPMENT:</b><br>Doosan DL 300 Loader<br>CAT 328DLCLC Excavator<br>Doosan DX300LC Excavator<br>Bobcat S590 Skid Steer<br>CZM EK300LS Drill Rig<br>CAT 314 CLCR Mini Excavator<br>Bobcat E45 Mini Excavator<br>CAT 345C Excavator   | <b>PRESENT AT SITE: RAWP Implementation Day 16</b><br>Environmental (Langan) – Michael Pinnella<br>General Contractor (BFC Construction)<br>Foundation Contractor (Precise Contracting [Precise])<br>Deep Foundation Contractor (RYC Turbos Corp.) |   |
| <b>OBSERVATIONS, DISCUSSIONS, TEST RESULTS, ETC.:</b><br><p>Langan was present to oversee implementation of the November 20, 2024 Remedial Action Work Plan (RAWP) for Brownfield Cleanup Program (BCP) Site No. C224398 at 1709 Surf Avenue. Observed activities were as follows:</p> <p><b>Site Activities</b></p> <ul style="list-style-type: none"> <li>Precise locally graded previously stockpiled fill/soil to prep for pile test setup in the southeastern part of the site.</li> </ul> <p><b>Sampling</b></p> <ul style="list-style-type: none"> <li>No samples were collected.</li> </ul> <p><b>CAMP Activities</b></p> <ul style="list-style-type: none"> <li>Langan performed community air monitoring at the perimeter of the site at two locations (one downwind and one upwind) and included air monitoring for particulate matter for particulates less than 10 µm in diameter (PM10) and volatile organic compounds (VOC). Particulate and VOC concentrations did not exceed the action levels established in the site Community Air Monitoring Program (CAMP). Fugitive dust or odors associated with intrusive activities were not observed.</li> </ul> <p><b>Anticipated Activities</b></p> <ul style="list-style-type: none"> <li>RYC Turbos Corp. will continue to install piles across the site's footprint.</li> </ul> <p><b>Material Tracking</b></p> <ul style="list-style-type: none"> <li>No material was imported to the site.</li> <li>No material was exported from the site.</li> </ul> |  |   |
| <b>Cc:</b> B. Gochenaur, K. Semon, M. Aronica (Langan)  | <b>By:</b> Michael Pinnella<br><b>LANGAN</b>   |   |

SITE OBSERVATION REPORT

FIGURE 1: SITE PLAN



Legend:

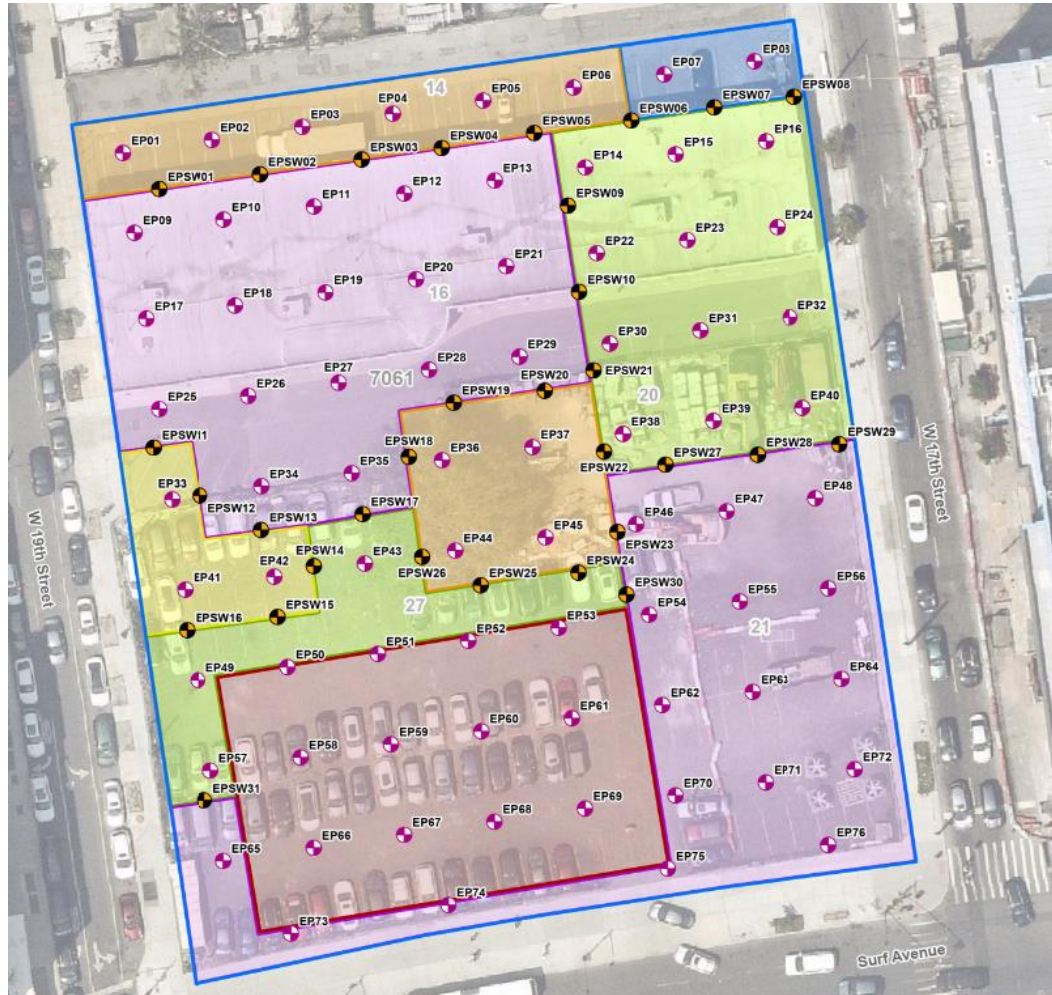
- Upwind CAMP Station
- Downwind CAMP Station
- Prevailing Wind Direction
- Approximate Location of Asphalt Removal Today
- Approximate Location of Soil/Fill Stockpile
- Approximate Location of Piles Installed Today
- Approximate Location of Excavation Today
- Approximate Location of Grading Today

Note:  
The base map is taken from Langan Engineering, Environmental, Surveying, Landscape Architecture & Geology D.P.C. Nearmap Web Portal. Accessed May 28, 2023.

|     |   |     |                  |
|-----|---|-----|------------------|
| Cc: | B. Gochenaur, K. Semon, M. Aronica (Langan) | By: | Michael Pinnella |
|     |   |     | LANGAN           |

## SITE OBSERVATION REPORT

**FIGURE 2: ENDPOINT/SIDEWALL SAMPLE LOCATION MAP**



### Legend

- Approximate Site Boundary
- Excavation to about 2 feet bgs
- Excavation to about 3 feet bgs
- Excavation to about 4 feet bgs
- Excavation to about 5 feet bgs
- Excavation to about 6 feet bgs
- Excavation to about 16 feet bgs to Remove Petroleum Impacts
- Proposed Endpoint Sample Location
- Proposed Sidewall Sample Location

|     |   |     |                  |
|-----|---|-----|------------------|
| Cc: | B. Gochenaur, K. Semon, M. Aronica (Langan) | By: | Michael Pinnella |
|     |   |     | LANGAN           |

SITE OBSERVATION REPORT

SITE PHOTOGRAPHS



Photo 1: General view of the site (facing southwest).

|     |   |     |                  |
|-----|---|-----|------------------|
| Cc: | B. Gochenaur, K. Semon, M. Aronica (Langan) | By: | Michael Pinnella |
|     |   |     | LANGAN           |