

DAILY OBSERVATION REPORT

LANGAN

PROJECT No.: 170824801 PROJECT: 172 Montrose Avenue LOCATION: Brooklyn, New York BCP SITE NUMBER: C224417	CLIENT: Montrose Meserole Owner LLC	DATE: Thursday, June 4, 2026 WEATHER: Sunny, 64-86 °F Wind: SSW @ 5-8 mph TIME: 7:00 – 14:30 MONITOR: Aron Farber	
EQUIPMENT: Geoprobe 7822DT Drill Rig Hand Tools Interface Probe Community Air Monitoring Plan Stations Handheld Photoionization Detector	PRESENT AT SITE: Environmental Staff (Langan): Aron Farber Environmental Drilling Contractor (EPhase 2): Luke Reiss, Sam Yanuck		
<p>OBSERVATIONS, DISCUSSIONS, TEST RESULTS, ETC.: Langan was present to perform work in accordance with the New York State Department of Environmental Conservation (NYSDEC)-approved Treatability Study Work Plan (TSWP) and the Remedial Action Work Plan (RAWP) for Brownfield Cleanup Program (BCP) Site No. C224417 at 172 Montrose Avenue (Block 3062, Lot 12). Observed activities were as follows:</p> <p>Site Activities</p> <ul style="list-style-type: none"> • EPhase 2 advanced soil borings to about 37 feet below grade surface (bgs) to install monitoring wells MW03 and MW04 for baseline groundwater sampling. Langan documented the work, logged the soil borings, and screened the recovered soil/fill for odors, staining, and organic vapors using a photoionization detector (PID). The following impacts were observed: <ul style="list-style-type: none"> ○ MW03: Petroleum-like odors were observed from 29 to 37 feet bgs, and a maximum PID reading of 5,548 parts per million (ppm) was observed at 30.5 feet bgs. Groundwater was encountered at about 30.5 feet bgs. ○ MW04: No impacts were observed. Groundwater was encountered at about 31.5 feet bgs. • Two-inch-diameter groundwater monitoring wells (MW03, MW04) were installed in each borehole consisting of ten feet of prepacked 0.01-inch slotted polyvinyl chloride (PVC) screen from about 37 feet to 27 feet bgs, and PVC riser from about 27 bgs to grade surface. • EPhase 2 used a submersible pump to develop monitoring wells MW03 and MW04. Approximately 7 gallons of purged groundwater were containerized in a 55-gallon steel drum in the northeastern part of the site pending future off-site disposal. <p>Sampling</p> <ul style="list-style-type: none"> • No samples were collected. 			
Cc:	C. Devin, S. Fernholz, K. Semon, B. Gochenaur (Langan)	By:	Aron Farber LANGAN

Community Air Monitoring Plan (CAMP) Activities

- Langan set up CAMP stations at the upwind and downwind site perimeters to monitor VOCs and particulate matter less than 10 micrometers (μm) in diameter (PM10) during intrusive activity. PM10 and VOC concentrations did not exceed the action levels established in the site CAMP. Fugitive dust or odors associated with intrusive activities were not observed.

Anticipated Activities

- EPhase 2 will continue groundwater monitoring well installation.

Cc:	C. Devin, S. Fernholz, K. Semon, B. Gochenaur (Langan)	By:	Aron Farber LANGAN
-----	---	-----	------------------------------

Site Photographs:



Photo 1: View of EPhase 2 developing monitoring well MW05 into a 55-gallon drum (facing down).

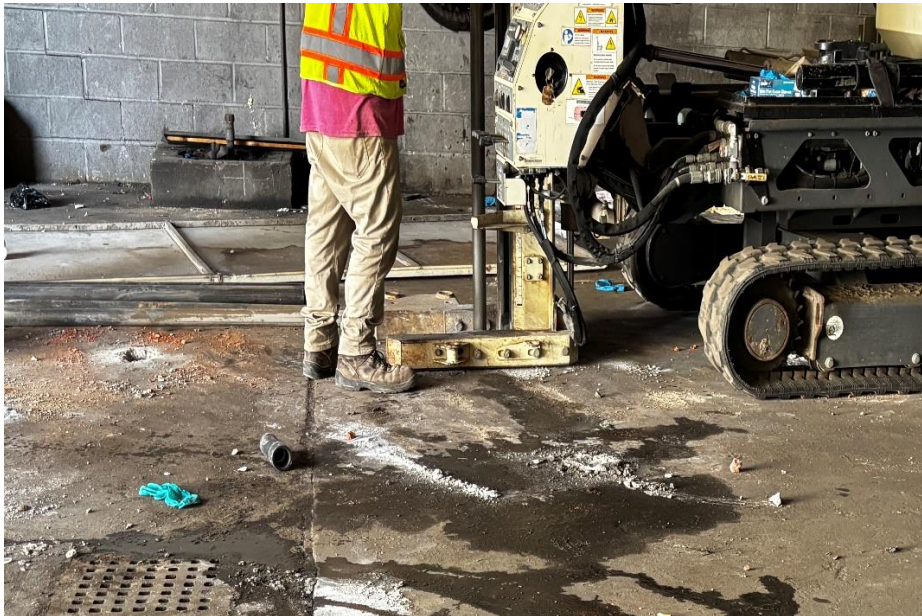


Photo 2: View of EPhase 2 advancing boring for installation of monitoring well MW03 (facing east).

Cc: C. Devin, S. Fernholz, K. Semon, B. Gochenaur
(Langan)

By: Aron Farber
LANGAN

Figure 1: Monitoring Well Location Map



Legend

- Approximate Site Boundary
- Tax Block
- Tax Parcel

- Monitoring Well Boring Advanced and Installed
- ⊗ Upwind CAMP Station
- ⊗ Downwind CAMP Station
- ↑ Wind Direction
- Drum Staging Area

- Waste Characterization Boring
- Lead Delineation Boring
- SVE well boring
- GW Treatability boring

Cc: C. Devin, S. Fernholz, K. Semon, B. Gochenaur (Langan)

By: Aron Farber
LANGAN

Date: Wednesday, June 3, 2026

Start: 7:46

End: 13:35

Observer: Aron Farber

UPWIND - UW
DOWNWIND - DW

Particulate Monitoring		
	UW	DW
Daily Average	0.005	0.029
Minimum 15min Average	0.004	0.015
Maximum 15min Average	0.008	0.123
High Intervals "exceedances" (15min > 1.5 + Upwind level)	NA	4.0
Minimum 1min Reading	0.003	0.004
Maximum 1min Reading	0.017	0.124

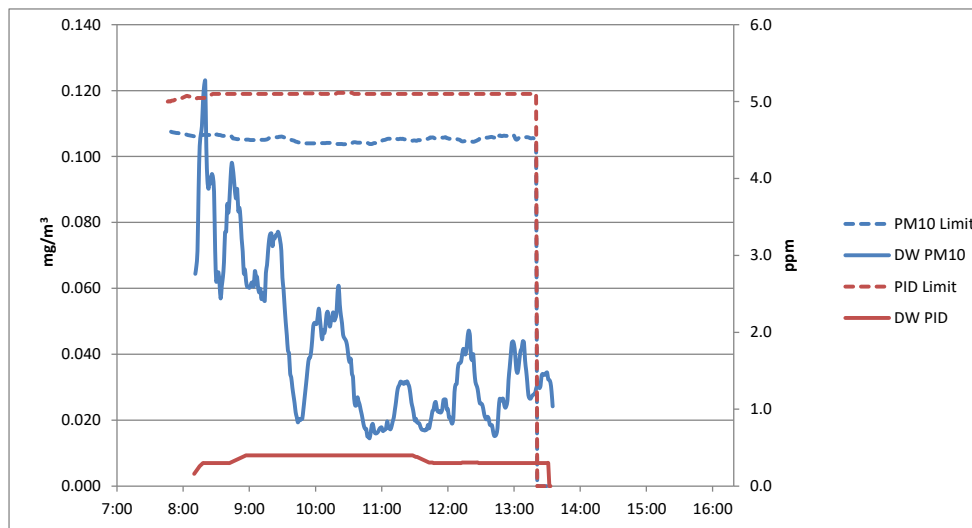
NA - Not applicable, upwind unit used for background concentrations

All reported units are mg/m³ or milligrams per cubic meter unless specified otherwise

Organic Vapor Monitoring		
	UW	DW
Daily Average	0.1	0.3
Minimum 15min Average	0.0	0.2
Maximum 15min Average	0.1	0.4
High Intervals "exceedances" (15min > 5 + Upwind level)	NA	0.0
Minimum 1min Reading	0.0	0.0
Maximum 1min Reading	0.2	0.4

NA - Not applicable, upwind unit used for background concentrations

All reported units are ppm or parts per million unless specified otherwise



Wednesday, June 3, 2026						
Number of Instances Where Downwind Particulates Exceeds Upwind Particulate + 150 =						4
Number of Comparable Data Points =						324
Start Time:						7:49
End Time:						13:35
PARTICULATE DATA						
Upwind			Downwind			Exceeds Particulate Alarm Limits
Time	Concentration (mg/m ³)	15-Minute Average	Time	Concentration (mg/m ³)	15-Minute Average	
7:49	0.01		7:49			
7:50	0.008		7:50			
7:51	0.008		7:51			
7:52	0.008		7:52			
7:53	0.008		7:53			
7:54	0.007		7:54			
7:55	0.007		7:55	0.014		
7:56	0.007		7:56	0.015		
7:57	0.007		7:57	0.013		
7:58	0.007		7:58	0.026		
7:59	0.007		7:59	0.013		
8:00	0.007		8:00	0.01		
8:01	0.007		8:01	0.014		
8:02	0.007		8:02	0.019		
8:03	0.008	0.008	8:03	0.015		
8:04	0.008	0.007	8:04	0.02		
8:05	0.007	0.007	8:05	0.033		
8:06	0.007	0.007	8:06	0.354		
8:07	0.007	0.007	8:07	0.198		
8:08	0.007	0.007	8:08	0.083		
8:09	0.007	0.007	8:09	0.067		
8:10	0.006	0.007	8:10	0.041		
8:11	0.006	0.007	8:11	0.06	0.064	-
8:12	0.006	0.007	8:12	0.049	0.067	-
8:13	0.006	0.007	8:13	0.094	0.071	-
8:14	0.007	0.007	8:14	0.293	0.090	-
8:15	0.006	0.007	8:15	0.208	0.103	-
8:16	0.006	0.007	8:16	0.066	0.107	-
8:17	0.006	0.007	8:17	0.057	0.109	X
8:18	0.006	0.007	8:18	0.129	0.117	X
8:19	0.007	0.006	8:19	0.089	0.121	X
8:20	0.006	0.006	8:20	0.056	0.123	X
8:21	0.006	0.006	8:21	0.052	0.103	-
8:22	0.006	0.006	8:22	0.047	0.093	-
8:23	0.006	0.006	8:23	0.045	0.090	-
8:24	0.006	0.006	8:24	0.118	0.094	-
8:25	0.006	0.006	8:25	0.014	0.092	-
8:26	0.006	0.006	8:26	0.103	0.095	-
8:27	0.007	0.006	8:27	0.035	0.094	-
8:28	0.007	0.006	8:28	0.028	0.089	-
8:29	0.008	0.006	8:29	0.028	0.072	-
8:30	0.007	0.006	8:30	0.065	0.062	-
8:31	0.008	0.007	8:31	0.085	0.063	-
8:32	0.006	0.007	8:32	0.079	0.065	-
8:33	0.007	0.007	8:33	0.076	0.061	-
8:34	0.007	0.007	8:34	0.023	0.057	-
8:35	0.006	0.007	8:35	0.112	0.061	-
8:36	0.006	0.007	8:36	0.092	0.063	-
8:37	0.005	0.007	8:37	0.115	0.068	-
8:38	0.006	0.007	8:38	0.182	0.077	-
8:39	0.006	0.007	8:39	0.121	0.077	-
8:40	0.005	0.006	8:40	0.139	0.086	-
8:41	0.006	0.006	8:41	0.064	0.083	-
8:42	0.005	0.006	8:42	0.098	0.087	-
8:43	0.006	0.006	8:43	0.124	0.094	-
8:44	0.014	0.007	8:44	0.095	0.098	-
8:45	0.007	0.007	8:45	0.042	0.096	-
8:46	0.006	0.007	8:46	0.037	0.093	-
8:47	0.006	0.007	8:47	0.02	0.089	-
8:48	0.006	0.006	8:48	0.045	0.087	-
8:49	0.005	0.006	8:49	0.066	0.090	-
8:50	0.005	0.006	8:50	0.011	0.083	-
8:51	0.006	0.006	8:51	0.108	0.084	-
8:52	0.005	0.006	8:52	0.067	0.081	-
8:53	0.005	0.006	8:53	0.09	0.075	-
8:54	0.005	0.006	8:54	0.062	0.071	-
8:55	0.006	0.006	8:55	0.039	0.065	-
8:56	0.005	0.006	8:56	0.082	0.066	-
8:57	0.005	0.006	8:57	0.047	0.062	-
8:58	0.005	0.006	8:58	0.096	0.060	-
8:59	0.006	0.006	8:59	0.095	0.060	-
9:00	0.006	0.005	9:00	0.037	0.060	-
9:01	0.005	0.005	9:01	0.046	0.061	-
9:02	0.005	0.005	9:02	0.035	0.062	-
9:03	0.005	0.005	9:03	0.042	0.062	-
9:04	0.005	0.005	9:04	0.052	0.061	-
9:05	0.005	0.005	9:05	0.08	0.065	-

PARTICULATE DATA						
Time	Upwind		Time	Downwind		Exceeds Particulate Alarm Limits
	Concentration (mg/m ³)	15-Minute Average		Concentration (mg/m ³)	15-Minute Average	
9:06	0.005	0.005	9:06	0.085	0.064	-
9:07	0.005	0.005	9:07	0.064	0.063	-
9:08	0.005	0.005	9:08	0.039	0.060	-
9:09	0.005	0.005	9:09	0.042	0.059	-
9:10	0.005	0.005	9:10	0.056	0.060	-
9:11	0.005	0.005	9:11	0.035	0.057	-
9:12	0.005	0.005	9:12	0.074	0.059	-
9:13	0.005	0.005	9:13	0.067	0.057	-
9:14	0.005	0.005	9:14	0.089	0.056	-
9:15	0.005	0.005	9:15	0.164	0.065	-
9:16	0.005	0.005	9:16	0.081	0.067	-
9:17	0.005	0.005	9:17	0.1	0.071	-
9:18	0.005	0.005	9:18	0.096	0.075	-
9:19	0.005	0.005	9:19	0.076	0.077	-
9:20	0.005	0.005	9:20	0.082	0.077	-
9:21	0.005	0.005	9:21	0.027	0.073	-
9:22	0.005	0.005	9:22	0.102	0.075	-
9:23	0.005	0.005	9:23	0.036	0.075	-
9:24	0.005	0.005	9:24	0.058	0.076	-
9:25	0.006	0.005	9:25	0.054	0.076	-
9:26	0.005	0.005	9:26	0.052	0.077	-
9:27	0.005	0.005	9:27	0.057	0.076	-
9:28	0.005	0.005	9:28	0.041	0.074	-
9:29	0.006	0.005	9:29	0.045	0.071	-
9:30	0.006	0.005	9:30	0.042	0.063	-
9:31	0.008	0.005	9:31	0.027	0.060	-
9:32	0.008	0.006	9:32	0.022	0.054	-
9:33	0.006	0.006	9:33	0.025	0.050	-
9:34	0.005	0.006	9:34	0.015	0.046	-
9:35	0.006	0.006	9:35	0.014	0.041	-
9:36	0.005	0.006	9:36	0.013	0.040	-
9:37	0.006	0.006	9:37	0.012	0.034	-
9:38	0.006	0.006	9:38	0.017	0.033	-
9:39	0.005	0.006	9:39	0.014	0.030	-
9:40	0.006	0.006	9:40	0.017	0.028	-
9:41	0.007	0.006	9:41	0.018	0.025	-
9:42	0.005	0.006	9:42	0.014	0.022	-
9:43	0.006	0.006	9:43	0.019	0.021	-
9:44	0.005	0.006	9:44	0.021	0.019	-
9:45	0.004	0.006	9:45	0.058	0.020	-
9:46	0.006	0.006	9:46	0.021	0.020	-
9:47	0.005	0.006	9:47	0.027	0.020	-
9:48	0.005	0.005	9:48	0.027	0.020	-
9:49	0.004	0.005	9:49	0.057	0.023	-
9:50	0.004	0.005	9:50	0.061	0.026	-
9:51	0.004	0.005	9:51	0.061	0.030	-
9:52	0.004	0.005	9:52	0.06	0.033	-
9:53	0.004	0.005	9:53	0.069	0.036	-
9:54	0.004	0.005	9:54	0.051	0.039	-
9:55	0.004	0.005	9:55	0.021	0.039	-
9:56	0.004	0.005	9:56	0.045	0.041	-
9:57	0.004	0.004	9:57	0.067	0.044	-
9:58	0.004	0.004	9:58	0.084	0.049	-
9:59	0.004	0.004	9:59	0.034	0.050	-
10:00	0.004	0.004	10:00	0.055	0.049	-
10:01	0.004	0.004	10:01	0.019	0.049	-
10:02	0.004	0.004	10:02	0.061	0.051	-
10:03	0.004	0.004	10:03	0.063	0.054	-
10:04	0.004	0.004	10:04	0.011	0.051	-
10:05	0.004	0.004	10:05	0.009	0.047	-
10:06	0.004	0.004	10:06	0.019	0.045	-
10:07	0.004	0.004	10:07	0.102	0.047	-
10:08	0.004	0.004	10:08	0.055	0.046	-
10:09	0.004	0.004	10:09	0.082	0.048	-
10:10	0.004	0.004	10:10	0.075	0.052	-
10:11	0.004	0.004	10:11	0.058	0.053	-
10:12	0.004	0.004	10:12	0.039	0.051	-
10:13	0.004	0.004	10:13	0.044	0.048	-
10:14	0.005	0.004	10:14	0.058	0.050	-
10:15	0.004	0.004	10:15	0.067	0.051	-
10:16	0.004	0.004	10:16	0.048	0.053	-
10:17	0.004	0.004	10:17	0.025	0.050	-
10:18	0.004	0.004	10:18	0.072	0.051	-
10:19	0.004	0.004	10:19	0.032	0.052	-
10:20	0.004	0.004	10:20	0.104	0.059	-
10:21	0.004	0.004	10:21	0.05	0.061	-
10:22	0.004	0.004	10:22	0.018	0.055	-
10:23	0.004	0.004	10:23	0.006	0.052	-
10:24	0.005	0.004	10:24	0.046	0.049	-
10:25	0.004	0.004	10:25	0.022	0.046	-
10:26	0.004	0.004	10:26	0.044	0.045	-
10:27	0.004	0.004	10:27	0.031	0.044	-
10:28	0.004	0.004	10:28	0.032	0.044	-
10:29	0.003	0.004	10:29	0.03	0.042	-

PARTICULATE DATA						
Time	Upwind		Downwind			Exceeds Particulate Alarm Limits
	Concentration (mg/m ³)	15-Minute Average	Time	Concentration (mg/m ³)	15-Minute Average	
10:30	0.004	0.004	10:30	0.023	0.039	-
10:31	0.004	0.004	10:31	0.029	0.038	-
10:32	0.003	0.004	10:32	0.04	0.039	-
10:33	0.003	0.004	10:33	0.005	0.034	-
10:34	0.003	0.004	10:34	0.015	0.033	-
10:35	0.004	0.004	10:35	0.008	0.027	-
10:36	0.004	0.004	10:36	0.018	0.024	-
10:37	0.004	0.004	10:37	0.019	0.025	-
10:38	0.004	0.004	10:38	0.042	0.027	-
10:39	0.004	0.004	10:39	0.028	0.026	-
10:40	0.004	0.004	10:40	0.007	0.025	-
10:41	0.004	0.004	10:41	0.019	0.023	-
10:42	0.003	0.004	10:42	0.009	0.022	-
10:43	0.004	0.004	10:43	0.004	0.020	-
10:44	0.004	0.004	10:44	0.006	0.018	-
10:45	0.004	0.004	10:45	0.012	0.017	-
10:46	0.005	0.004	10:46	0.028	0.017	-
10:47	0.006	0.004	10:47	0.006	0.015	-
10:48	0.007	0.004	10:48	0.006	0.015	-
10:49	0.004	0.004	10:49	0.006	0.015	-
10:50	0.004	0.004	10:50	0.033	0.016	-
10:51	0.003	0.004	10:51	0.051	0.018	-
10:52	0.003	0.004	10:52	0.026	0.019	-
10:53	0.004	0.004	10:53	0.014	0.017	-
10:54	0.004	0.004	10:54	0.014	0.016	-
10:55	0.004	0.004	10:55	0.006	0.016	-
10:56	0.004	0.004	10:56	0.022	0.016	-
10:57	0.004	0.004	10:57	0.016	0.017	-
10:58	0.004	0.004	10:58	0.015	0.017	-
10:59	0.004	0.004	10:59	0.011	0.018	-
11:00	0.003	0.004	11:00	0.013	0.018	-
11:01	0.004	0.004	11:01	0.012	0.017	-
11:02	0.004	0.004	11:02	0.009	0.017	-
11:03	0.004	0.004	11:03	0.009	0.017	-
11:04	0.004	0.004	11:04	0.013	0.018	-
11:05	0.004	0.004	11:05	0.064	0.020	-
11:06	0.005	0.004	11:06	0.025	0.018	-
11:07	0.005	0.004	11:07	0.019	0.017	-
11:08	0.004	0.004	11:08	0.011	0.017	-
11:09	0.004	0.004	11:09	0.028	0.018	-
11:10	0.005	0.004	11:10	0.028	0.020	-
11:11	0.004	0.004	11:11	0.04	0.021	-
11:12	0.007	0.004	11:12	0.052	0.023	-
11:13	0.007	0.005	11:13	0.05	0.026	-
11:14	0.007	0.005	11:14	0.054	0.028	-
11:15	0.006	0.005	11:15	0.037	0.030	-
11:16	0.005	0.005	11:16	0.021	0.031	-
11:17	0.005	0.005	11:17	0.024	0.032	-
11:18	0.006	0.005	11:18	0.008	0.032	-
11:19	0.006	0.005	11:19	0.01	0.031	-
11:20	0.005	0.005	11:20	0.058	0.031	-
11:21	0.005	0.005	11:21	0.094	0.032	-
11:22	0.005	0.005	11:22	0.013	0.031	-
11:23	0.006	0.006	11:23	0.02	0.032	-
11:24	0.005	0.006	11:24	0.016	0.031	-
11:25	0.005	0.006	11:25	0.015	0.030	-
11:26	0.005	0.006	11:26	0.008	0.028	-
11:27	0.005	0.006	11:27	0.012	0.025	-
11:28	0.004	0.005	11:28	0.028	0.024	-
11:29	0.006	0.005	11:29	0.027	0.022	-
11:30	0.007	0.005	11:30	0.005	0.020	-
11:31	0.006	0.005	11:31	0.029	0.020	-
11:32	0.004	0.005	11:32	0.008	0.019	-
11:33	0.007	0.005	11:33	0.005	0.019	-
11:34	0.004	0.005	11:34	0.008	0.019	-
11:35	0.004	0.005	11:35	0.044	0.018	-
11:36	0.004	0.005	11:36	0.022	0.017	-
11:37	0.005	0.005	11:37	0.009	0.017	-
11:38	0.004	0.005	11:38	0.02	0.017	-
11:39	0.004	0.005	11:39	0.013	0.017	-
11:40	0.004	0.005	11:40	0.02	0.017	-
11:41	0.005	0.005	11:41	0.008	0.017	-
11:42	0.004	0.005	11:42	0.033	0.019	-
11:43	0.005	0.005	11:43	0.012	0.018	-
11:44	0.006	0.005	11:44	0.053	0.019	-
11:45	0.006	0.005	11:45	0.028	0.021	-
11:46	0.006	0.005	11:46	0.058	0.023	-
11:47	0.007	0.005	11:47	0.015	0.023	-
11:48	0.006	0.005	11:48	0.033	0.025	-
11:49	0.005	0.005	11:49	0.015	0.026	-
11:50	0.004	0.005	11:50	0.014	0.024	-
11:51	0.005	0.005	11:51	0.008	0.023	-
11:52	0.005	0.005	11:52	0.012	0.023	-
11:53	0.005	0.005	11:53	0.013	0.022	-

PARTICULATE DATA						
Upwind			Downwind			Exceeds Particulate Alarm Limits
Time	Concentration (mg/m ³)	15-Minute Average	Time	Concentration (mg/m ³)	15-Minute Average	
11:54	0.005	0.005	11:54	0.015	0.022	-
11:55	0.006	0.005	11:55	0.035	0.023	-
11:56	0.006	0.005	11:56	0.048	0.026	-
11:57	0.006	0.006	11:57	0.036	0.026	-
11:58	0.009	0.006	11:58	0.01	0.026	-
11:59	0.005	0.006	11:59	0.009	0.023	-
12:00	0.007	0.006	12:00	0.03	0.023	-
12:01	0.005	0.006	12:01	0.019	0.021	-
12:02	0.004	0.006	12:02	0.017	0.021	-
12:03	0.005	0.005	12:03	0.013	0.020	-
12:04	0.005	0.005	12:04	0.006	0.019	-
12:05	0.005	0.006	12:05	0.041	0.021	-
12:06	0.006	0.006	12:06	0.124	0.029	-
12:07	0.006	0.006	12:07	0.046	0.031	-
12:08	0.006	0.006	12:08	0.017	0.031	-
12:09	0.005	0.006	12:09	0.084	0.036	-
12:10	0.006	0.006	12:10	0.058	0.037	-
12:11	0.007	0.006	12:11	0.05	0.037	-
12:12	0.007	0.006	12:12	0.043	0.038	-
12:13	0.005	0.006	12:13	0.043	0.040	-
12:14	0.004	0.006	12:14	0.034	0.042	-
12:15	0.005	0.005	12:15	0.009	0.040	-
12:16	0.005	0.005	12:16	0.015	0.040	-
12:17	0.004	0.005	12:17	0.046	0.042	-
12:18	0.005	0.005	12:18	0.068	0.046	-
12:19	0.006	0.005	12:19	0.03	0.047	-
12:20	0.005	0.005	12:20	0.017	0.046	-
12:21	0.005	0.005	12:21	0.024	0.039	-
12:22	0.005	0.005	12:22	0.035	0.038	-
12:23	0.004	0.005	12:23	0.044	0.040	-
12:24	0.004	0.005	12:24	0.009	0.035	-
12:25	0.004	0.005	12:25	0.007	0.032	-
12:26	0.003	0.005	12:26	0.034	0.031	-
12:27	0.005	0.005	12:27	0.026	0.029	-
12:28	0.005	0.005	12:28	0.007	0.027	-
12:29	0.005	0.005	12:29	0.006	0.025	-
12:30	0.005	0.005	12:30	0.008	0.025	-
12:31	0.005	0.005	12:31	0.011	0.025	-
12:32	0.005	0.005	12:32	0.038	0.024	-
12:33	0.005	0.005	12:33	0.04	0.022	-
12:34	0.005	0.005	12:34	0.015	0.021	-
12:35	0.004	0.005	12:35	0.01	0.020	-
12:36	0.004	0.005	12:36	0.036	0.021	-
12:37	0.004	0.004	12:37	0.026	0.020	-
12:38	0.005	0.005	12:38	0.017	0.019	-
12:39	0.006	0.005	12:39	0.006	0.018	-
12:40	0.006	0.005	12:40	0.007	0.018	-
12:41	0.006	0.005	12:41	0.006	0.017	-
12:42	0.007	0.005	12:42	0.006	0.015	-
12:43	0.011	0.006	12:43	0.007	0.015	-
12:44	0.006	0.006	12:44	0.014	0.016	-
12:45	0.005	0.006	12:45	0.036	0.018	-
12:46	0.005	0.006	12:46	0.094	0.023	-
12:47	0.007	0.006	12:47	0.077	0.026	-
12:48	0.006	0.006	12:48	0.032	0.026	-
12:49	0.004	0.006	12:49	0.022	0.026	-
12:50	0.004	0.006	12:50	0.012	0.027	-
12:51	0.005	0.006	12:51	0.011	0.025	-
12:52	0.005	0.006	12:52	0.01	0.024	-
12:53	0.006	0.006	12:53	0.025	0.024	-
12:54	0.006	0.006	12:54	0.03	0.026	-
12:55	0.004	0.006	12:55	0.1	0.032	-
12:56	0.005	0.006	12:56	0.062	0.036	-
12:57	0.006	0.006	12:57	0.063	0.040	-
12:58	0.006	0.005	12:58	0.064	0.043	-
12:59	0.005	0.005	12:59	0.021	0.044	-
13:00	0.017	0.006	13:00	0.021	0.043	-
13:01	0.01	0.006	13:01	0.051	0.040	-

PARTICULATE DATA						
Upwind			Downwind			Exceeds Particulate Alarm Limits
Time	Concentration (mg/m ³)	15-Minute Average	Time	Concentration (mg/m ³)	15-Minute Average	
13:02	0.005	0.006	13:02	0.009	0.036	-
13:03	0.005	0.006	13:03	0.014	0.034	-
13:04	0.005	0.006	13:04	0.044	0.036	-
13:05	0.005	0.006	13:05	0.059	0.039	-
13:06	0.004	0.006	13:06	0.043	0.041	-
13:07	0.005	0.006	13:07	0.022	0.042	-
13:08	0.005	0.006	13:08	0.057	0.044	-
13:09	0.004	0.006	13:09	0.024	0.044	-
13:10	0.004	0.006	13:10	0.017	0.038	-
13:11	0.004	0.006	13:11	0.017	0.035	-
13:12	0.006	0.006	13:12	0.009	0.031	-
13:13	0.007	0.006	13:13	0.006	0.028	-
13:14	0.009	0.006	13:14	0.007	0.027	-
13:15	0.005	0.006	13:15	0.019	0.027	-
13:16	0.004	0.005	13:16	0.061	0.027	-
13:17	0.006	0.005	13:17	0.015	0.028	-
13:18	0.01	0.006	13:18	0.018	0.028	-
13:19	0.009	0.006	13:19	0.047	0.028	-
13:20	0.005	0.006	13:20	0.082	0.030	-
13:21	0.006	0.006	13:21	0.055	0.030	-
13:22	0.005	0.006	13:22	0.034	0.031	-
13:23	0.004	0.006	13:23	0.035	0.030	-
13:24	0.004	0.006	13:24	0.035	0.030	-
13:25	0.004	0.006	13:25	0.064	0.034	-
13:26	0.004	0.006	13:26	0.024	0.034	-
13:27	0.005	0.006	13:27	0.005	0.034	-
13:28	0.005	0.006	13:28	0.006	0.034	-
13:29	0.007	0.006	13:29	0.015	0.034	-
13:30	0.005	0.006	13:30	0.021	0.034	-
13:31	0.005	0.006	13:31	0.03	0.032	-
13:32	0.004	0.005	13:32	0.012	0.032	-
13:33	0.004	0.005	13:33	0.006	0.031	-
13:34	0.006	0.005	13:34	0.007	0.029	-
			13:35	0.014	0.024	-

Wednesday, June 3, 2026						
Number of Instances Where Downwind VOCs Exceeds Upwind VOCs + 5 =						0
Number of Comparable Data Points =						322
Start Time:						7:46
End Time:						13:33
PID DATA						
Upwind			Downwind			Exceeds VOCs Alarm Limits
Time	VOC (ppm)	15-Minute Average	Time	VOC (ppm)	15-Minute Average	
7:46	0.1		7:46			
7:47	0		7:47			
7:48	0		7:48			
7:49	0		7:49	0		
7:50	0		7:50	0		
7:51	0		7:51	0		
7:52	0		7:52	0		
7:53	0		7:53	0		
7:54	0		7:54	0		
7:55	0		7:55	0		
7:56	0		7:56	0		
7:57	0		7:57	0		
7:58	0		7:58	0		
7:59	0		7:59	0		
8:00	0	0.0	8:00	0		
8:01	0	0.0	8:01	0		
8:02	0.1	0.0	8:02	0		
8:03	0.1	0.0	8:03	0		
8:04	0	0.0	8:04	0		
8:05	0.1	0.0	8:05	0		
8:06	0.1	0.0	8:06	0.1		
8:07	0.1	0.0	8:07	0.1		
8:08	0.1	0.0	8:08	0.1		
8:09	0	0.0	8:09	0.3		
8:10	0	0.0	8:10	0.3	0.2	-
8:11	0	0.0	8:11	0.3	0.2	-
8:12	0.1	0.0	8:12	0.3	0.2	-
8:13	0.1	0.1	8:13	0.3	0.2	-
8:14	0.1	0.1	8:14	0.3	0.2	-
8:15	0.1	0.1	8:15	0.3	0.3	-
8:16	0.1	0.1	8:16	0.3	0.3	-
8:17	0.1	0.1	8:17	0.3	0.3	-
8:18	0	0.1	8:18	0.3	0.3	-
8:19	0	0.1	8:19	0.3	0.3	-
8:20	0	0.1	8:20	0.3	0.3	-
8:21	0	0.1	8:21	0.3	0.3	-
8:22	0	0.0	8:22	0.3	0.3	-
8:23	0	0.0	8:23	0.3	0.3	-
8:24	0	0.0	8:24	0.3	0.3	-
8:25	0	0.0	8:25	0.3	0.3	-
8:26	0.1	0.0	8:26	0.3	0.3	-
8:27	0.1	0.0	8:27	0.3	0.3	-
8:28	0.1	0.0	8:28	0.3	0.3	-
8:29	0.1	0.0	8:29	0.3	0.3	-
8:30	0.1	0.0	8:30	0.3	0.3	-
8:31	0.1	0.0	8:31	0.3	0.3	-
8:32	0.1	0.0	8:32	0.3	0.3	-
8:33	0.1	0.1	8:33	0.3	0.3	-
8:34	0.1	0.1	8:34	0.3	0.3	-
8:35	0.1	0.1	8:35	0.3	0.3	-
8:36	0.1	0.1	8:36	0.3	0.3	-
8:37	0.1	0.1	8:37	0.3	0.3	-
8:38	0.1	0.1	8:38	0.3	0.3	-
8:39	0.1	0.1	8:39	0.3	0.3	-
8:40	0.1	0.1	8:40	0.3	0.3	-
8:41	0.1	0.1	8:41	0.3	0.3	-
8:42	0.1	0.1	8:42	0.3	0.3	-
8:43	0.1	0.1	8:43	0.3	0.3	-
8:44	0.1	0.1	8:44	0.3	0.3	-
8:45	0.1	0.1	8:45	0.3	0.3	-
8:46	0.1	0.1	8:46	0.3	0.3	-
8:47	0.1	0.1	8:47	0.3	0.3	-
8:48	0.1	0.1	8:48	0.4	0.3	-
8:49	0.1	0.1	8:49	0.4	0.3	-
8:50	0.1	0.1	8:50	0.4	0.4	-
8:51	0.1	0.1	8:51	0.4	0.4	-
8:52	0.1	0.1	8:52	0.4	0.4	-
8:53	0.1	0.1	8:53	0.4	0.4	-
8:54	0.1	0.1	8:54	0.4	0.4	-
8:55	0.1	0.1	8:55	0.4	0.4	-
8:56	0.1	0.1	8:56	0.4	0.4	-
8:57	0.1	0.1	8:57	0.4	0.4	-
8:58	0.1	0.1	8:58	0.4	0.4	-
8:59	0.1	0.1	8:59	0.4	0.4	-
9:00	0.1	0.1	9:00	0.4	0.4	-
9:01	0.1	0.1	9:01	0.4	0.4	-
9:02	0.1	0.1	9:02	0.4	0.4	-
9:03	0.1	0.1	9:03	0.4	0.4	-

PID DATA						
Upwind			Downwind			Exceeds VOCs Alarm Limits
Time	VOC (ppm)	15-Minute Average	Time	VOC (ppm)	15-Minute Average	
9:04	0.1	0.1	9:04	0.4	0.4	-
9:05	0.1	0.1	9:05	0.4	0.4	-
9:06	0.1	0.1	9:06	0.4	0.4	-
9:07	0.1	0.1	9:07	0.4	0.4	-
9:08	0.1	0.1	9:08	0.4	0.4	-
9:09	0.1	0.1	9:09	0.4	0.4	-
9:10	0.1	0.1	9:10	0.4	0.4	-
9:11	0.1	0.1	9:11	0.4	0.4	-
9:12	0.1	0.1	9:12	0.4	0.4	-
9:13	0.1	0.1	9:13	0.4	0.4	-
9:14	0.1	0.1	9:14	0.4	0.4	-
9:15	0.1	0.1	9:15	0.4	0.4	-
9:16	0.1	0.1	9:16	0.4	0.4	-
9:17	0.1	0.1	9:17	0.4	0.4	-
9:18	0.1	0.1	9:18	0.4	0.4	-
9:19	0.1	0.1	9:19	0.4	0.4	-
9:20	0.1	0.1	9:20	0.4	0.4	-
9:21	0.1	0.1	9:21	0.4	0.4	-
9:22	0.1	0.1	9:22	0.4	0.4	-
9:23	0.1	0.1	9:23	0.4	0.4	-
9:24	0.1	0.1	9:24	0.4	0.4	-
9:25	0.1	0.1	9:25	0.4	0.4	-
9:26	0.1	0.1	9:26	0.4	0.4	-
9:27	0.1	0.1	9:27	0.4	0.4	-
9:28	0.1	0.1	9:28	0.4	0.4	-
9:29	0.1	0.1	9:29	0.4	0.4	-
9:30	0.1	0.1	9:30	0.4	0.4	-
9:31	0.1	0.1	9:31	0.4	0.4	-
9:32	0.1	0.1	9:32	0.4	0.4	-
9:33	0.1	0.1	9:33	0.4	0.4	-
9:34	0.1	0.1	9:34	0.4	0.4	-
9:35	0.1	0.1	9:35	0.4	0.4	-
9:36	0.1	0.1	9:36	0.4	0.4	-
9:37	0.1	0.1	9:37	0.4	0.4	-
9:38	0.1	0.1	9:38	0.4	0.4	-
9:39	0.1	0.1	9:39	0.4	0.4	-
9:40	0.1	0.1	9:40	0.4	0.4	-
9:41	0.1	0.1	9:41	0.4	0.4	-
9:42	0.1	0.1	9:42	0.4	0.4	-
9:43	0.1	0.1	9:43	0.4	0.4	-
9:44	0.1	0.1	9:44	0.4	0.4	-
9:45	0.1	0.1	9:45	0.4	0.4	-
9:46	0.1	0.1	9:46	0.4	0.4	-
9:47	0.1	0.1	9:47	0.4	0.4	-
9:48	0.1	0.1	9:48	0.4	0.4	-
9:49	0.1	0.1	9:49	0.4	0.4	-
9:50	0.1	0.1	9:50	0.4	0.4	-
9:51	0.1	0.1	9:51	0.4	0.4	-
9:52	0.1	0.1	9:52	0.4	0.4	-
9:53	0.1	0.1	9:53	0.4	0.4	-
9:54	0.1	0.1	9:54	0.4	0.4	-
9:55	0.1	0.1	9:55	0.4	0.4	-
9:56	0.1	0.1	9:56	0.4	0.4	-
9:57	0.1	0.1	9:57	0.4	0.4	-
9:58	0.1	0.1	9:58	0.4	0.4	-
9:59	0.1	0.1	9:59	0.4	0.4	-
10:00	0.1	0.1	10:00	0.4	0.4	-
10:01	0.1	0.1	10:01	0.4	0.4	-
10:02	0.1	0.1	10:02	0.4	0.4	-
10:03	0.2	0.1	10:03	0.4	0.4	-
10:04	0.1	0.1	10:04	0.4	0.4	-
10:05	0.1	0.1	10:05	0.4	0.4	-
10:06	0.1	0.1	10:06	0.4	0.4	-
10:07	0.1	0.1	10:07	0.4	0.4	-
10:08	0.1	0.1	10:08	0.4	0.4	-
10:09	0.1	0.1	10:09	0.4	0.4	-
10:10	0.1	0.1	10:10	0.4	0.4	-
10:11	0.1	0.1	10:11	0.4	0.4	-
10:12	0.1	0.1	10:12	0.4	0.4	-
10:13	0.1	0.1	10:13	0.4	0.4	-
10:14	0.1	0.1	10:14	0.4	0.4	-
10:15	0.1	0.1	10:15	0.4	0.4	-
10:16	0.1	0.1	10:16	0.4	0.4	-
10:17	0.1	0.1	10:17	0.4	0.4	-
10:18	0.1	0.1	10:18	0.4	0.4	-
10:19	0.1	0.1	10:19	0.4	0.4	-
10:20	0.1	0.1	10:20	0.4	0.4	-
10:21	0.1	0.1	10:21	0.4	0.4	-
10:22	0.1	0.1	10:22	0.4	0.4	-
10:23	0.1	0.1	10:23	0.4	0.4	-
10:24	0.1	0.1	10:24	0.4	0.4	-
10:25	0.1	0.1	10:25	0.4	0.4	-
10:26	0.1	0.1	10:26	0.4	0.4	-
10:27	0.1	0.1	10:27	0.4	0.4	-

PID DATA						
Upwind			Downwind			Exceeds VOCs Alarm Limits
Time	VOC (ppm)	15-Minute Average	Time	VOC (ppm)	15-Minute Average	
10:28	0.1	0.1	10:28	0.4	0.4	-
10:29	0.1	0.1	10:29	0.4	0.4	-
10:30	0.1	0.1	10:30	0.4	0.4	-
10:31	0.1	0.1	10:31	0.4	0.4	-
10:32	0.2	0.1	10:32	0.4	0.4	-
10:33	0.2	0.1	10:33	0.4	0.4	-
10:34	0.1	0.1	10:34	0.4	0.4	-
10:35	0.1	0.1	10:35	0.4	0.4	-
10:36	0.1	0.1	10:36	0.4	0.4	-
10:37	0.1	0.1	10:37	0.4	0.4	-
10:38	0.1	0.1	10:38	0.4	0.4	-
10:39	0.1	0.1	10:39	0.4	0.4	-
10:40	0.1	0.1	10:40	0.4	0.4	-
10:41	0.1	0.1	10:41	0.4	0.4	-
10:42	0.1	0.1	10:42	0.4	0.4	-
10:43	0.1	0.1	10:43	0.4	0.4	-
10:44	0.1	0.1	10:44	0.4	0.4	-
10:45	0.1	0.1	10:45	0.4	0.4	-
10:46	0.1	0.1	10:46	0.4	0.4	-
10:47	0.1	0.1	10:47	0.4	0.4	-
10:48	0.1	0.1	10:48	0.4	0.4	-
10:49	0.1	0.1	10:49	0.4	0.4	-
10:50	0.1	0.1	10:50	0.4	0.4	-
10:51	0.1	0.1	10:51	0.4	0.4	-
10:52	0.1	0.1	10:52	0.4	0.4	-
10:53	0.1	0.1	10:53	0.4	0.4	-
10:54	0.1	0.1	10:54	0.4	0.4	-
10:55	0.1	0.1	10:55	0.4	0.4	-
10:56	0.1	0.1	10:56	0.4	0.4	-
10:57	0.1	0.1	10:57	0.4	0.4	-
10:58	0.1	0.1	10:58	0.4	0.4	-
10:59	0.1	0.1	10:59	0.4	0.4	-
11:00	0.1	0.1	11:00	0.4	0.4	-
11:01	0.1	0.1	11:01	0.4	0.4	-
11:02	0.1	0.1	11:02	0.4	0.4	-
11:03	0.1	0.1	11:03	0.4	0.4	-
11:04	0.1	0.1	11:04	0.4	0.4	-
11:05	0.1	0.1	11:05	0.4	0.4	-
11:06	0.1	0.1	11:06	0.4	0.4	-
11:07	0.1	0.1	11:07	0.4	0.4	-
11:08	0.1	0.1	11:08	0.4	0.4	-
11:09	0.1	0.1	11:09	0.4	0.4	-
11:10	0.1	0.1	11:10	0.4	0.4	-
11:11	0.1	0.1	11:11	0.4	0.4	-
11:12	0.1	0.1	11:12	0.4	0.4	-
11:13	0.1	0.1	11:13	0.4	0.4	-
11:14	0.1	0.1	11:14	0.4	0.4	-
11:15	0.1	0.1	11:15	0.4	0.4	-
11:16	0.1	0.1	11:16	0.4	0.4	-
11:17	0.1	0.1	11:17	0.4	0.4	-
11:18	0.1	0.1	11:18	0.4	0.4	-
11:19	0.1	0.1	11:19	0.4	0.4	-
11:20	0.1	0.1	11:20	0.4	0.4	-
11:21	0.1	0.1	11:21	0.4	0.4	-
11:22	0.1	0.1	11:22	0.4	0.4	-
11:23	0.1	0.1	11:23	0.4	0.4	-
11:24	0.1	0.1	11:24	0.4	0.4	-
11:25	0.1	0.1	11:25	0.4	0.4	-
11:26	0.1	0.1	11:26	0.4	0.4	-
11:27	0.1	0.1	11:27	0.4	0.4	-
11:28	0.1	0.1	11:28	0.4	0.4	-
11:29	0.1	0.1	11:29	0.4	0.4	-
11:30	0.1	0.1	11:30	0.4	0.4	-
11:31	0.1	0.1	11:31	0.4	0.4	-
11:32	0.1	0.1	11:32	0.4	0.4	-
11:33	0.1	0.1	11:33	0.4	0.4	-
11:34	0.1	0.1	11:34	0.3	0.4	-
11:35	0.1	0.1	11:35	0.3	0.4	-
11:36	0.1	0.1	11:36	0.3	0.4	-
11:37	0.1	0.1	11:37	0.4	0.3	-
11:38	0.1	0.1	11:38	0.3	0.3	-
11:39	0.1	0.1	11:39	0.3	0.3	-
11:40	0.1	0.1	11:40	0.3	0.3	-
11:41	0.1	0.1	11:41	0.3	0.3	-
11:42	0.1	0.1	11:42	0.3	0.3	-
11:43	0.1	0.1	11:43	0.3	0.3	-
11:44	0.1	0.1	11:44	0.3	0.3	-
11:45	0.1	0.1	11:45	0.3	0.3	-
11:46	0.1	0.1	11:46	0.3	0.3	-
11:47	0.1	0.1	11:47	0.3	0.3	-
11:48	0.1	0.1	11:48	0.3	0.3	-
11:49	0.1	0.1	11:49	0.3	0.3	-
11:50	0.1	0.1	11:50	0.3	0.3	-
11:51	0.1	0.1	11:51	0.3	0.3	-

PID DATA						
Upwind			Downwind			Exceeds VOCs Alarm Limits
Time	VOC (ppm)	15-Minute Average	Time	VOC (ppm)	15-Minute Average	
11:52	0.1	0.1	11:52	0.3	0.3	-
11:53	0.1	0.1	11:53	0.3	0.3	-
11:54	0.1	0.1	11:54	0.3	0.3	-
11:55	0.1	0.1	11:55	0.3	0.3	-
11:56	0.1	0.1	11:56	0.3	0.3	-
11:57	0.1	0.1	11:57	0.3	0.3	-
11:58	0.1	0.1	11:58	0.3	0.3	-
11:59	0.1	0.1	11:59	0.3	0.3	-
12:00	0.1	0.1	12:00	0.3	0.3	-
12:01	0.1	0.1	12:01	0.3	0.3	-
12:02	0.1	0.1	12:02	0.3	0.3	-
12:03	0.1	0.1	12:03	0.3	0.3	-
12:04	0.1	0.1	12:04	0.3	0.3	-
12:05	0.1	0.1	12:05	0.3	0.3	-
12:06	0.1	0.1	12:06	0.3	0.3	-
12:07	0.1	0.1	12:07	0.3	0.3	-
12:08	0.1	0.1	12:08	0.3	0.3	-
12:09	0.1	0.1	12:09	0.3	0.3	-
12:10	0.1	0.1	12:10	0.3	0.3	-
12:11	0.1	0.1	12:11	0.3	0.3	-
12:12	0.1	0.1	12:12	0.3	0.3	-
12:13	0.1	0.1	12:13	0.3	0.3	-
12:14	0.1	0.1	12:14	0.3	0.3	-
12:15	0.1	0.1	12:15	0.3	0.3	-
12:16	0.1	0.1	12:16	0.3	0.3	-
12:17	0.1	0.1	12:17	0.3	0.3	-
12:18	0.1	0.1	12:18	0.4	0.3	-
12:19	0.1	0.1	12:19	0.3	0.3	-
12:20	0.1	0.1	12:20	0.3	0.3	-
12:21	0.1	0.1	12:21	0.3	0.3	-
12:22	0.1	0.1	12:22	0.3	0.3	-
12:23	0.1	0.1	12:23	0.3	0.3	-
12:24	0.1	0.1	12:24	0.3	0.3	-
12:25	0.1	0.1	12:25	0.3	0.3	-
12:26	0.1	0.1	12:26	0.3	0.3	-
12:27	0.1	0.1	12:27	0.3	0.3	-
12:28	0.1	0.1	12:28	0.3	0.3	-
12:29	0.1	0.1	12:29	0.3	0.3	-
12:30	0.1	0.1	12:30	0.3	0.3	-
12:31	0.1	0.1	12:31	0.3	0.3	-
12:32	0.1	0.1	12:32	0.3	0.3	-
12:33	0.1	0.1	12:33	0.3	0.3	-
12:34	0.1	0.1	12:34	0.3	0.3	-
12:35	0.1	0.1	12:35	0.3	0.3	-
12:36	0.1	0.1	12:36	0.3	0.3	-
12:37	0.1	0.1	12:37	0.3	0.3	-
12:38	0.1	0.1	12:38	0.3	0.3	-
12:39	0.1	0.1	12:39	0.3	0.3	-
12:40	0.1	0.1	12:40	0.3	0.3	-
12:41	0.1	0.1	12:41	0.3	0.3	-
12:42	0.1	0.1	12:42	0.3	0.3	-
12:43	0.1	0.1	12:43	0.3	0.3	-
12:44	0.1	0.1	12:44	0.3	0.3	-
12:45	0.1	0.1	12:45	0.3	0.3	-
12:46	0.1	0.1	12:46	0.3	0.3	-
12:47	0.1	0.1	12:47	0.3	0.3	-
12:48	0.1	0.1	12:48	0.3	0.3	-
12:49	0.1	0.1	12:49	0.3	0.3	-
12:50	0.1	0.1	12:50	0.3	0.3	-
12:51	0.1	0.1	12:51	0.3	0.3	-
12:52	0.1	0.1	12:52	0.3	0.3	-
12:53	0.1	0.1	12:53	0.3	0.3	-
12:54	0.1	0.1	12:54	0.3	0.3	-
12:55	0.1	0.1	12:55	0.3	0.3	-
12:56	0.1	0.1	12:56	0.3	0.3	-
12:57	0.1	0.1	12:57	0.3	0.3	-
12:58	0.1	0.1	12:58	0.3	0.3	-
12:59	0.1	0.1	12:59	0.3	0.3	-
13:00	0.1	0.1	13:00	0.3	0.3	-
13:01	0.1	0.1	13:01	0.3	0.3	-
13:02	0.1	0.1	13:02	0.3	0.3	-
13:03	0.1	0.1	13:03	0.3	0.3	-
13:04	0.1	0.1	13:04	0.3	0.3	-
13:05	0.1	0.1	13:05	0.3	0.3	-
13:06	0.1	0.1	13:06	0.3	0.3	-
13:07	0.1	0.1	13:07	0.3	0.3	-

PID DATA						
Upwind			Downwind			Exceeds VOCs Alarm Limits
Time	VOC (ppm)	15-Minute Average	Time	VOC (ppm)	15-Minute Average	
13:08	0.1	0.1	13:08	0.3	0.3	-
13:09	0.1	0.1	13:09	0.3	0.3	-
13:10	0.1	0.1	13:10	0.3	0.3	-
13:11	0.1	0.1	13:11	0.3	0.3	-
13:12	0.1	0.1	13:12	0.3	0.3	-
13:13	0.1	0.1	13:13	0.3	0.3	-
13:14	0.1	0.1	13:14	0.3	0.3	-
13:15	0.1	0.1	13:15	0.3	0.3	-
13:16	0.1	0.1	13:16	0.3	0.3	-
13:17	0.1	0.1	13:17	0.3	0.3	-
13:18	0.1	0.1	13:18	0.3	0.3	-
13:19	0.1	0.1	13:19	0.3	0.3	-
13:20	0.1	0.1	13:20	0.3	0.3	-
13:21	0.1	0.1	13:21	0.3	0.3	-
13:22	0.1	0.1	13:22	0.3	0.3	-
13:23	0.1	0.1	13:23	0.3	0.3	-
13:24	0.1	0.1	13:24	0.3	0.3	-
13:25	0.1	0.1	13:25	0.3	0.3	-
13:26	0.1	0.1	13:26	0.3	0.3	-
13:27	0.1	0.1	13:27	0.3	0.3	-
13:28	0.1	0.1	13:28	0.3	0.3	-
13:29	0.1	0.1	13:29	0.3	0.3	-
13:30	0.1	0.1	13:30	0.3	0.3	-
13:31	0.1	0.1	13:31	0.3	0.3	-
13:32	0.1	0.1				
13:33	0.1	0.1				