

DAILY OBSERVATION REPORT

LANGAN

PROJECT No.: 170824801 PROJECT: 172 Montrose Avenue LOCATION: Brooklyn, New York BCP SITE NUMBER: C224417	CLIENT: Montrose Meserole Owner LLC	DATE: Friday, June 5, 2026 WEATHER: Sunny, 72-89 °F Wind: SSW @ 5-13 mph TIME: 7:00 – 15:00 MONITOR: Aron Farber	
EQUIPMENT: Geoprobe 7822DT Drill Rig Hand Tools Interface Probe Community Air Monitoring Plan Stations Handheld Photoionization Detector	PRESENT AT SITE: Environmental Staff (Langan): Aron Farber, Dylan Morrison Environmental Drilling Contractor (EPhase 2): Luke Reiss, Sam Yanuck		
<p>OBSERVATIONS, DISCUSSIONS, TEST RESULTS, ETC.: Langan was present to perform work in accordance with the New York State Department of Environmental Conservation (NYSDEC)-approved Treatability Study Work Plan (TSWP) and the Remedial Action Work Plan (RAWP) for Brownfield Cleanup Program (BCP) Site No. C224417 at 172 Montrose Avenue (Block 3062, Lot 12). Observed activities were as follows:</p> <p>Site Activities</p> <ul style="list-style-type: none"> • EPhase 2 advanced a soil boring to about 37 feet below grade surface (bgs) to install monitoring well MW02 for baseline groundwater sampling. Langan documented the work, logged the soil boring, and screened the recovered soil/fill for odors, staining, and organic vapors using a photoionization detector (PID). Petroleum-like odors and a maximum PID reading of 31.4 parts per million (ppm) were observed from 31.5 to 37 feet bgs. Groundwater was encountered at about 31.5 feet bgs. <ul style="list-style-type: none"> ○ A two-inch-diameter groundwater monitoring well (MW02) was installed in the borehole consisting of ten feet of prepacked 0.01-inch slotted polyvinyl chloride (PVC) screen from about 37 feet to 27 feet bgs, and PVC riser from about 27 bgs to grade surface. • Langan collected a groundwater sample from previously installed remedial investigation monitoring well RIMW21 from the Montrose Avenue sidewalk as part of the TSWP. The sample is being stored under standard chain-of-custody protocol prior to analysis at New Jersey Institute of Technology (NJIT) laboratory. • EPhase 2 used a submersible pump to develop monitoring well MW02. Approximately 4 gallons of purged groundwater were containerized in a 55-gallon steel drum in the northern part of the site pending future off-site disposal. 			
Cc:	C. Devin, S.Fernholz, K. Semon, B. Gochenaur (Langan)	By:	Aron Farber LANGAN

Sampling

- Langan collected soil and groundwater samples for laboratory analysis. Samples were relinquished to Pace Analytical, a New York State Department of Health (NYSDOH) Environmental Laboratory Approval Program (ELAP) laboratory under standard chain-of-custody protocol.
- The following groundwater samples were submitted for analysis of Part 375/TCL Volatile Organic Compounds (VOC):
 - MW04_060526
 - MW05_060526
- The following QA/QC samples were submitted for analysis of Part 375/TCL VOCs:
 - GWFB01_060526
 - GWTB01_060526

Community Air Monitoring Plan (CAMP) Activities

- Langan set up CAMP stations at the upwind and downwind site perimeters to monitor VOCs and particulate matter less than 10 micrometers (µm) in diameter (PM10) during intrusive activity. PM10 and VOC concentrations did not exceed the action levels established in the site CAMP. Fugitive dust or odors associated with intrusive activities were not observed.

Anticipated Activities

- EPhase 2 will continue groundwater monitoring well installation next week (resuming on June 8, 2026).

Cc:	C. Devin, K. Semon, B. Gochenaur (Langan)	By:	Aron Farber
			LANGAN

Site Photographs:



Photo 1: View of EPhase 2 advancing soil boring/monitoring well MW02 in the central part of the site (facing southeast).

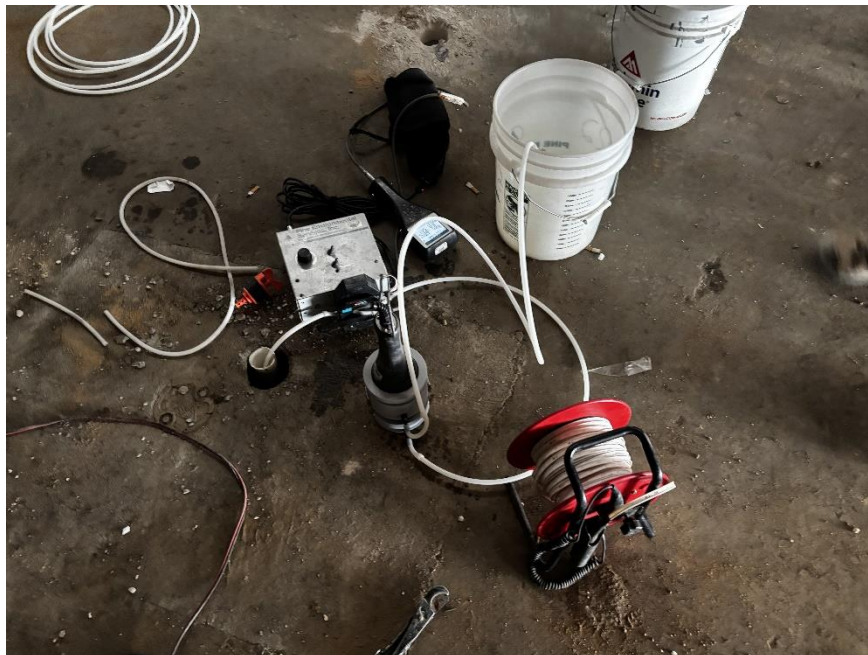


Photo 2: View of low-flow groundwater sampling setup at monitoring well MW04 (facing southwest).

Cc:	C. Devin, K. Semon, B. Gochenaur (Langan)	By:	Aron Farber LANGAN
-----	---	-----	------------------------------

Figure 1: Monitoring Well Location Map



Legend

- Approximate Site Boundary
- Tax Block
- Tax Parcel

- Waste Characterization Boring
- Lead Delineation Boring
- SVE well boring
- GW Treatability boring

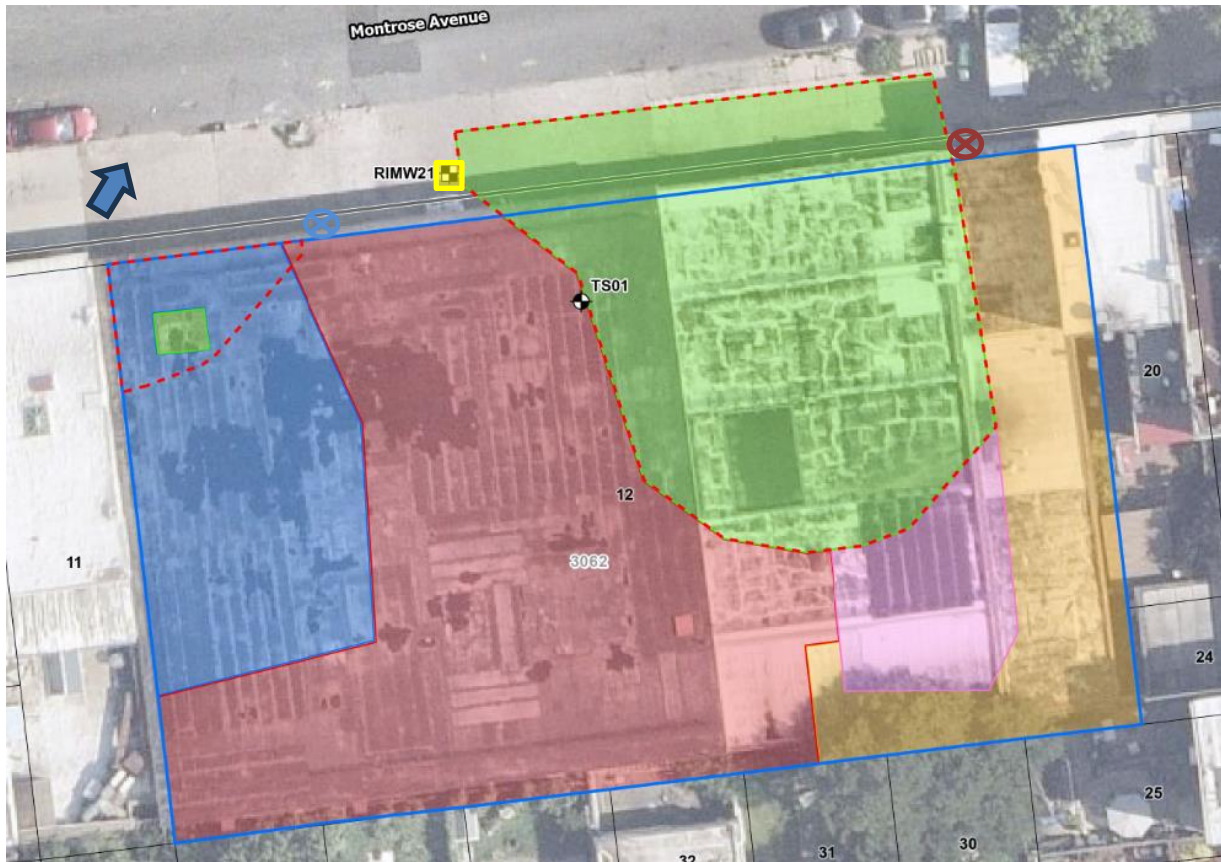
- Monitoring Well Boring Advanced and Installed
- Monitoring Well Sampled
- Upwind CAMP Station
- Downwind CAMP Station
- Wind Direction
- Drum Staging Area

Cc: C. Devin, K. Semon, B. Gochenaur (Langan)

By: Aron Farber

LANGAN

Figure 2: TSWP Boring Location Map



Legend

- Proposed Groundwater Treatability Soil Boring Location
- Proposed Groundwater Treatability Groundwater Sample Location
- Approximate Site Boundary
- Tax Block
- Tax Parcel
- Excavation to about 2 feet bgs
- Excavation to about 4 feet bgs
- Excavation to about 10 feet bgs
- Excavation to about 12 feet bgs
- Excavation to about 15 to 17 feet bgs
- Approximate Groundwater Treatment Extent
- Soil Boring Advanced
- Upwind CAMP Station
- Downwind CAMP Station
- Wind Direction
- Drum Staging Area
- Monitoring Well Sampled

Cc: C. Devin, K. Semon, B. Gochenaur (Langan)

By: Aron Farber

LANGAN

Date: Friday, June 5, 2025

Start: 7:25

End: 13:56

Observer: Aron Farber

UPWIND - UW
DOWNWIND - DW

Particulate Monitoring		
	UW	DW
Daily Average	0.017	0.015
Minimum 15min Average	0.010	0.007
Maximum 15min Average	0.032	0.031
High Intervals "exceedances" (15min > 1.5 + Upwind level)	NA	0.0
Minimum 1min Reading	0.009	0.006
Maximum 1min Reading	0.160	0.084

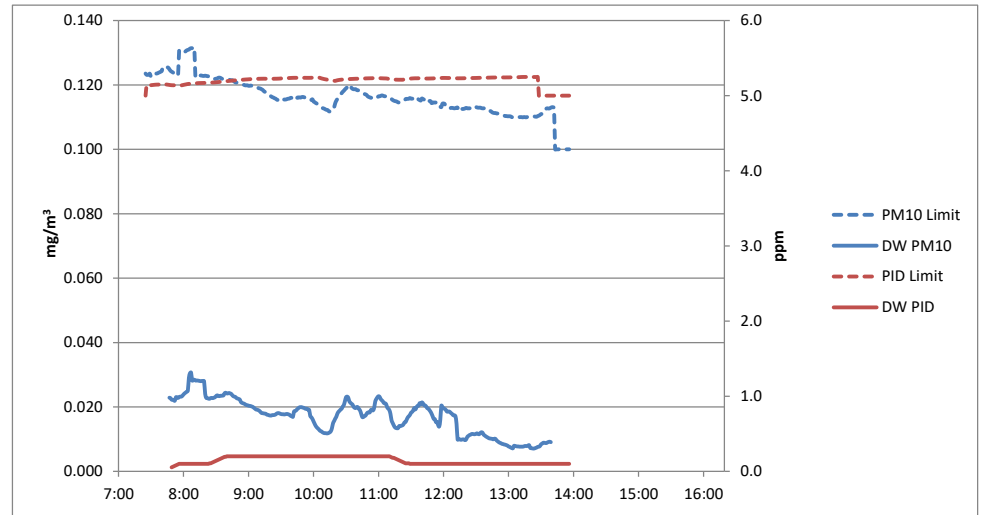
NA - Not applicable, upwind unit used for background concentrations

All reported units are mg/m³ or milligrams per cubic meter unless specified otherwise

Organic Vapor Monitoring		
	UW	DW
Daily Average	0.2	0.1
Minimum 15min Average	0.1	0.1
Maximum 15min Average	0.2	0.2
High Intervals "exceedances" (15min > 5 + Upwind level)	NA	0.0
Minimum 1min Reading	0.1	0.0
Maximum 1min Reading	0.3	0.2

NA - Not applicable, upwind unit used for background concentrations

All reported units are ppm or parts per million unless specified otherwise



Friday, June 5, 2025						
Number of Instances Where Downwind Particulates Exceeds Upwind Particulate + 150 =					0	
Number of Comparable Data Points =					336	
Start Time:					7:25	
End Time:					13:56	
PARTICULATE DATA						
Upwind			Downwind			Exceeds Particulate Alarm Limits
Time	Concentration (mg/m ³)	15-Minute Average	Time	Concentration (mg/m ³)	15-Minute Average	
7:25	0.029		7:25	0.094		
7:26	0.023		7:26	0.023		
7:27	0.022		7:27	0.022		
7:28	0.021		7:28	0.022		
7:29	0.038		7:29	0.022		
7:30	0.022		7:30	0.023		
7:31	0.022		7:31	0.021		
7:32	0.021		7:32	0.023		
7:33	0.021		7:33	0.022		
7:34	0.021		7:34	0.027		
7:35	0.023		7:35	0.022		
7:36	0.022		7:36	0.022		
7:37	0.023		7:37	0.023		
7:38	0.022		7:38	0.044		
7:39	0.023	0.024	7:39	0.023		
7:40	0.023	0.023	7:40	0.022		
7:41	0.023	0.023	7:41	0.022		
7:42	0.024	0.023	7:42	0.021		
7:43	0.024	0.023	7:43	0.022		
7:44	0.023	0.022	7:44	0.018		
7:45	0.025	0.023	7:45	0.017		
7:46	0.025	0.023	7:46	0.018		
7:47	0.025	0.023	7:47	0.02	0.023	-
7:48	0.024	0.023	7:48	0.02	0.023	-
7:49	0.024	0.024	7:49	0.02	0.022	-
7:50	0.024	0.024	7:50	0.021	0.022	-
7:51	0.025	0.024	7:51	0.02	0.022	-
7:52	0.025	0.024	7:52	0.021	0.022	-
7:53	0.025	0.024	7:53	0.06	0.023	-
7:54	0.026	0.024	7:54	0.023	0.023	-
7:55	0.042	0.026	7:55	0.019	0.023	-
7:56	0.023	0.026	7:56	0.026	0.023	-
7:57	0.024	0.026	7:57	0.023	0.023	-
7:58	0.023	0.026	7:58	0.022	0.023	-
7:59	0.022	0.025	7:59	0.022	0.023	-
8:00	0.023	0.025	8:00	0.023	0.024	-
8:01	0.018	0.025	8:01	0.023	0.024	-
8:02	0.018	0.024	8:02	0.024	0.024	-
8:03	0.02	0.024	8:03	0.024	0.025	-
8:04	0.021	0.024	8:04	0.024	0.025	-
8:05	0.02	0.024	8:05	0.082	0.029	-
8:06	0.022	0.023	8:06	0.041	0.030	-
8:07	0.023	0.023	8:07	0.024	0.031	-
8:08	0.022	0.023	8:08	0.023	0.028	-
8:09	0.023	0.023	8:09	0.024	0.028	-
8:10	0.16	0.031	8:10	0.022	0.028	-
8:11	0.021	0.031	8:11	0.022	0.028	-
8:12	0.023	0.031	8:12	0.023	0.028	-
8:13	0.024	0.031	8:13	0.022	0.028	-
8:14	0.019	0.030	8:14	0.021	0.028	-
8:15	0.02	0.030	8:15	0.022	0.028	-
8:16	0.021	0.030	8:16	0.022	0.028	-
8:17	0.022	0.031	8:17	0.025	0.028	-
8:18	0.022	0.031	8:18	0.024	0.028	-
8:19	0.023	0.031	8:19	0.023	0.028	-
8:20	0.024	0.031	8:20	0.023	0.024	-
8:21	0.024	0.031	8:21	0.022	0.023	-
8:22	0.023	0.031	8:22	0.023	0.023	-
8:23	0.023	0.031	8:23	0.021	0.023	-
8:24	0.025	0.032	8:24	0.023	0.023	-
8:25	0.023	0.022	8:25	0.025	0.023	-
8:26	0.027	0.023	8:26	0.023	0.023	-
8:27	0.022	0.023	8:27	0.022	0.023	-
8:28	0.023	0.023	8:28	0.024	0.023	-
8:29	0.021	0.023	8:29	0.023	0.023	-
8:30	0.021	0.023	8:30	0.027	0.023	-
8:31	0.02	0.023	8:31	0.026	0.024	-
8:32	0.021	0.023	8:32	0.023	0.023	-
8:33	0.022	0.023	8:33	0.022	0.023	-
8:34	0.024	0.023	8:34	0.025	0.023	-
8:35	0.023	0.023	8:35	0.023	0.023	-
8:36	0.023	0.023	8:36	0.023	0.024	-
8:37	0.022	0.023	8:37	0.024	0.024	-
8:38	0.023	0.023	8:38	0.031	0.024	-
8:39	0.021	0.022	8:39	0.025	0.024	-
8:40	0.022	0.022	8:40	0.022	0.024	-
8:41	0.022	0.022	8:41	0.023	0.024	-

PARTICULATE DATA						
Time	Upwind		Time	Downwind		Exceeds Particulate Alarm Limits
	Concentration (mg/m ³)	15-Minute Average		Concentration (mg/m ³)	15-Minute Average	
8:42	0.022	0.022	8:42	0.024	0.024	-
8:43	0.021	0.022	8:43	0.022	0.024	-
8:44	0.022	0.022	8:44	0.021	0.024	-
8:45	0.022	0.022	8:45	0.021	0.024	-
8:46	0.023	0.022	8:46	0.021	0.023	-
8:47	0.022	0.022	8:47	0.021	0.023	-
8:48	0.021	0.022	8:48	0.02	0.023	-
8:49	0.021	0.022	8:49	0.02	0.023	-
8:50	0.021	0.022	8:50	0.021	0.023	-
8:51	0.022	0.022	8:51	0.021	0.022	-
8:52	0.022	0.022	8:52	0.021	0.022	-
8:53	0.022	0.022	8:53	0.02	0.022	-
8:54	0.021	0.022	8:54	0.021	0.021	-
8:55	0.021	0.022	8:55	0.02	0.021	-
8:56	0.022	0.022	8:56	0.021	0.021	-
8:57	0.02	0.022	8:57	0.021	0.021	-
8:58	0.02	0.021	8:58	0.019	0.021	-
8:59	0.022	0.021	8:59	0.02	0.021	-
9:00	0.019	0.021	9:00	0.019	0.020	-
9:01	0.019	0.021	9:01	0.02	0.020	-
9:02	0.019	0.021	9:02	0.02	0.020	-
9:03	0.02	0.021	9:03	0.018	0.020	-
9:04	0.02	0.021	9:04	0.018	0.020	-
9:05	0.019	0.021	9:05	0.017	0.020	-
9:06	0.02	0.020	9:06	0.017	0.019	-
9:07	0.02	0.020	9:07	0.017	0.019	-
9:08	0.021	0.020	9:08	0.019	0.019	-
9:09	0.019	0.020	9:09	0.019	0.019	-
9:10	0.02	0.020	9:10	0.017	0.019	-
9:11	0.02	0.020	9:11	0.016	0.018	-
9:12	0.02	0.020	9:12	0.016	0.018	-
9:13	0.02	0.020	9:13	0.018	0.018	-
9:14	0.02	0.020	9:14	0.019	0.018	-
9:15	0.019	0.020	9:15	0.018	0.018	-
9:16	0.02	0.020	9:16	0.019	0.018	-
9:17	0.018	0.020	9:17	0.016	0.018	-
9:18	0.021	0.020	9:18	0.017	0.018	-
9:19	0.019	0.020	9:19	0.016	0.017	-
9:20	0.018	0.020	9:20	0.016	0.017	-
9:21	0.018	0.020	9:21	0.017	0.017	-
9:22	0.017	0.019	9:22	0.019	0.017	-
9:23	0.017	0.019	9:23	0.019	0.017	-
9:24	0.017	0.019	9:24	0.02	0.018	-
9:25	0.019	0.019	9:25	0.019	0.018	-
9:26	0.017	0.019	9:26	0.02	0.018	-
9:27	0.017	0.018	9:27	0.018	0.018	-
9:28	0.015	0.018	9:28	0.018	0.018	-
9:29	0.016	0.018	9:29	0.017	0.018	-
9:30	0.018	0.018	9:30	0.016	0.018	-
9:31	0.017	0.018	9:31	0.018	0.018	-
9:32	0.015	0.017	9:32	0.016	0.018	-
9:33	0.015	0.017	9:33	0.016	0.018	-
9:34	0.014	0.017	9:34	0.017	0.018	-
9:35	0.014	0.016	9:35	0.017	0.018	-
9:36	0.015	0.016	9:36	0.017	0.018	-
9:37	0.015	0.016	9:37	0.017	0.018	-
9:38	0.014	0.016	9:38	0.017	0.018	-
9:39	0.015	0.016	9:39	0.015	0.017	-
9:40	0.015	0.015	9:40	0.019	0.017	-
9:41	0.015	0.015	9:41	0.016	0.017	-
9:42	0.019	0.015	9:42	0.043	0.019	-
9:43	0.021	0.016	9:43	0.02	0.019	-
9:44	0.015	0.016	9:44	0.02	0.019	-
9:45	0.015	0.016	9:45	0.022	0.019	-
9:46	0.014	0.015	9:46	0.022	0.020	-
9:47	0.016	0.015	9:47	0.02	0.020	-
9:48	0.015	0.015	9:48	0.017	0.020	-
9:49	0.015	0.016	9:49	0.017	0.020	-
9:50	0.016	0.016	9:50	0.015	0.020	-
9:51	0.016	0.016	9:51	0.016	0.020	-
9:52	0.016	0.016	9:52	0.014	0.020	-
9:53	0.017	0.016	9:53	0.015	0.019	-
9:54	0.014	0.016	9:54	0.016	0.019	-
9:55	0.014	0.016	9:55	0.014	0.019	-
9:56	0.016	0.016	9:56	0.015	0.019	-
9:57	0.017	0.016	9:57	0.015	0.017	-
9:58	0.015	0.015	9:58	0.014	0.017	-
9:59	0.025	0.016	9:59	0.012	0.016	-
10:00	0.015	0.016	10:00	0.011	0.016	-
10:01	0.015	0.016	10:01	0.011	0.015	-
10:02	0.015	0.016	10:02	0.01	0.014	-
10:03	0.017	0.016	10:03	0.01	0.014	-
10:04	0.016	0.016	10:04	0.012	0.013	-
10:05	0.015	0.016	10:05	0.01	0.013	-

PARTICULATE DATA						
Time	Upwind		Time	Downwind		Exceeds Particulate Alarm Limits
	Concentration (mg/m ³)	15-Minute Average		Concentration (mg/m ³)	15-Minute Average	
10:06	0.014	0.016	10:06	0.01	0.013	-
10:07	0.013	0.016	10:07	0.012	0.012	-
10:08	0.013	0.016	10:08	0.011	0.012	-
10:09	0.014	0.016	10:09	0.013	0.012	-
10:10	0.015	0.016	10:10	0.012	0.012	-
10:11	0.014	0.016	10:11	0.015	0.012	-
10:12	0.014	0.015	10:12	0.014	0.012	-
10:13	0.018	0.016	10:13	0.014	0.012	-
10:14	0.015	0.015	10:14	0.014	0.012	-
10:15	0.012	0.015	10:15	0.014	0.012	-
10:16	0.011	0.014	10:16	0.016	0.012	-
10:17	0.012	0.014	10:17	0.024	0.013	-
10:18	0.011	0.014	10:18	0.033	0.015	-
10:19	0.012	0.014	10:19	0.022	0.016	-
10:20	0.011	0.013	10:20	0.021	0.016	-
10:21	0.011	0.013	10:21	0.019	0.017	-
10:22	0.01	0.013	10:22	0.026	0.018	-
10:23	0.011	0.013	10:23	0.02	0.018	-
10:24	0.012	0.013	10:24	0.018	0.019	-
10:25	0.012	0.012	10:25	0.018	0.019	-
10:26	0.012	0.012	10:26	0.019	0.019	-
10:27	0.013	0.012	10:27	0.024	0.020	-
10:28	0.013	0.012	10:28	0.021	0.021	-
10:29	0.013	0.012	10:29	0.032	0.022	-
10:30	0.014	0.012	10:30	0.032	0.023	-
10:31	0.013	0.012	10:31	0.019	0.023	-
10:32	0.014	0.012	10:32	0.02	0.023	-
10:33	0.024	0.013	10:33	0.016	0.022	-
10:34	0.031	0.014	10:34	0.015	0.021	-
10:35	0.023	0.015	10:35	0.016	0.021	-
10:36	0.019	0.016	10:36	0.015	0.021	-
10:37	0.017	0.016	10:37	0.016	0.020	-
10:38	0.017	0.016	10:38	0.015	0.020	-
10:39	0.021	0.017	10:39	0.017	0.020	-
10:40	0.018	0.017	10:40	0.023	0.020	-
10:41	0.018	0.018	10:41	0.017	0.020	-
10:42	0.018	0.018	10:42	0.016	0.019	-
10:43	0.019	0.019	10:43	0.014	0.019	-
10:44	0.018	0.019	10:44	0.017	0.018	-
10:45	0.019	0.019	10:45	0.017	0.017	-
10:46	0.021	0.020	10:46	0.019	0.017	-
10:47	0.018	0.020	10:47	0.024	0.017	-
10:48	0.019	0.020	10:48	0.019	0.017	-
10:49	0.022	0.019	10:49	0.023	0.018	-
10:50	0.018	0.019	10:50	0.022	0.018	-
10:51	0.017	0.019	10:51	0.015	0.018	-
10:52	0.017	0.019	10:52	0.017	0.018	-
10:53	0.017	0.019	10:53	0.026	0.019	-
10:54	0.017	0.018	10:54	0.018	0.019	-
10:55	0.017	0.018	10:55	0.02	0.019	-
10:56	0.017	0.018	10:56	0.03	0.020	-
10:57	0.016	0.018	10:57	0.045	0.022	-
10:58	0.016	0.018	10:58	0.025	0.022	-
10:59	0.015	0.018	10:59	0.025	0.023	-
11:00	0.016	0.018	11:00	0.022	0.023	-
11:01	0.016	0.017	11:01	0.016	0.023	-
11:02	0.016	0.017	11:02	0.014	0.022	-
11:03	0.016	0.017	11:03	0.013	0.022	-
11:04	0.016	0.016	11:04	0.018	0.022	-
11:05	0.015	0.016	11:05	0.014	0.021	-
11:06	0.015	0.016	11:06	0.014	0.021	-
11:07	0.015	0.016	11:07	0.013	0.021	-
11:08	0.018	0.016	11:08	0.011	0.020	-
11:09	0.015	0.016	11:09	0.012	0.019	-
11:10	0.018	0.016	11:10	0.013	0.019	-
11:11	0.014	0.016	11:11	0.013	0.018	-
11:12	0.017	0.016	11:12	0.015	0.016	-
11:13	0.02	0.016	11:13	0.013	0.015	-
11:14	0.02	0.016	11:14	0.014	0.014	-
11:15	0.016	0.016	11:15	0.013	0.014	-
11:16	0.018	0.017	11:16	0.012	0.013	-
11:17	0.018	0.017	11:17	0.013	0.013	-
11:18	0.015	0.017	11:18	0.013	0.013	-
11:19	0.014	0.017	11:19	0.028	0.014	-
11:20	0.014	0.016	11:20	0.013	0.014	-
11:21	0.015	0.016	11:21	0.017	0.014	-
11:22	0.012	0.016	11:22	0.014	0.014	-
11:23	0.013	0.016	11:23	0.016	0.015	-
11:24	0.012	0.016	11:24	0.021	0.015	-
11:25	0.015	0.016	11:25	0.015	0.015	-
11:26	0.015	0.016	11:26	0.024	0.016	-
11:27	0.013	0.015	11:27	0.025	0.017	-
11:28	0.017	0.015	11:28	0.019	0.017	-
11:29	0.018	0.015	11:29	0.02	0.018	-

PARTICULATE DATA						
Upwind			Downwind			Exceeds Particulate Alarm Limits
Time	Concentration (mg/m ³)	15-Minute Average	Time	Concentration (mg/m ³)	15-Minute Average	
11:30	0.015	0.015	11:30	0.023	0.018	-
11:31	0.016	0.015	11:31	0.016	0.018	-
11:32	0.015	0.015	11:32	0.02	0.019	-
11:33	0.014	0.015	11:33	0.024	0.020	-
11:34	0.014	0.015	11:34	0.021	0.019	-
11:35	0.017	0.015	11:35	0.023	0.020	-
11:36	0.018	0.015	11:36	0.024	0.020	-
11:37	0.014	0.015	11:37	0.015	0.020	-
11:38	0.015	0.015	11:38	0.028	0.021	-
11:39	0.018	0.016	11:39	0.015	0.021	-
11:40	0.016	0.016	11:40	0.024	0.021	-
11:41	0.015	0.016	11:41	0.02	0.021	-
11:42	0.014	0.016	11:42	0.016	0.021	-
11:43	0.02	0.016	11:43	0.018	0.020	-
11:44	0.015	0.016	11:44	0.015	0.020	-
11:45	0.015	0.016	11:45	0.015	0.020	-
11:46	0.015	0.016	11:46	0.014	0.019	-
11:47	0.013	0.016	11:47	0.013	0.019	-
11:48	0.022	0.016	11:48	0.017	0.019	-
11:49	0.014	0.016	11:49	0.011	0.018	-
11:50	0.013	0.016	11:50	0.011	0.017	-
11:51	0.013	0.015	11:51	0.012	0.016	-
11:52	0.012	0.015	11:52	0.014	0.016	-
11:53	0.012	0.015	11:53	0.014	0.015	-
11:54	0.028	0.016	11:54	0.016	0.015	-
11:55	0.013	0.016	11:55	0.01	0.014	-
11:56	0.013	0.015	11:56	0.013	0.014	-
11:57	0.014	0.015	11:57	0.047	0.016	-
11:58	0.012	0.015	11:58	0.084	0.020	-
11:59	0.012	0.015	11:59	0.009	0.020	-
12:00	0.012	0.015	12:00	0.009	0.020	-
12:01	0.022	0.015	12:01	0.011	0.019	-
12:02	0.012	0.015	12:02	0.009	0.019	-
12:03	0.013	0.014	12:03	0.009	0.019	-
12:04	0.017	0.015	12:04	0.01	0.019	-
12:05	0.013	0.015	12:05	0.012	0.019	-
12:06	0.013	0.015	12:06	0.009	0.018	-
12:07	0.012	0.015	12:07	0.009	0.018	-
12:08	0.012	0.015	12:08	0.01	0.018	-
12:09	0.012	0.013	12:09	0.01	0.017	-
12:10	0.011	0.013	12:10	0.01	0.017	-
12:11	0.011	0.013	12:11	0.009	0.017	-
12:12	0.013	0.013	12:12	0.011	0.015	-
12:13	0.028	0.014	12:13	0.011	0.010	-
12:14	0.012	0.014	12:14	0.01	0.010	-
12:15	0.011	0.014	12:15	0.009	0.010	-
12:16	0.011	0.013	12:16	0.009	0.010	-
12:17	0.012	0.013	12:17	0.01	0.010	-
12:18	0.012	0.013	12:18	0.01	0.010	-
12:19	0.011	0.013	12:19	0.009	0.010	-
12:20	0.011	0.013	12:20	0.009	0.010	-
12:21	0.014	0.013	12:21	0.014	0.010	-
12:22	0.012	0.013	12:22	0.02	0.011	-
12:23	0.011	0.013	12:23	0.014	0.011	-
12:24	0.011	0.013	12:24	0.014	0.011	-
12:25	0.012	0.013	12:25	0.012	0.011	-
12:26	0.013	0.013	12:26	0.012	0.012	-
12:27	0.013	0.013	12:27	0.011	0.012	-
12:28	0.012	0.012	12:28	0.01	0.012	-
12:29	0.016	0.012	12:29	0.01	0.012	-
12:30	0.015	0.012	12:30	0.011	0.012	-
12:31	0.013	0.013	12:31	0.011	0.012	-
12:32	0.012	0.013	12:32	0.007	0.012	-
12:33	0.013	0.013	12:33	0.009	0.012	-
12:34	0.013	0.013	12:34	0.015	0.012	-
12:35	0.013	0.013	12:35	0.012	0.012	-
12:36	0.012	0.013	12:36	0.012	0.012	-
12:37	0.012	0.013	12:37	0.011	0.011	-

PARTICULATE DATA						
Upwind			Downwind			Exceeds Particulate Alarm Limits
Time	Concentration (mg/m ³)	15-Minute Average	Time	Concentration (mg/m ³)	15-Minute Average	
12:38	0.011	0.013	12:38	0.01	0.011	-
12:39	0.012	0.013	12:39	0.01	0.011	-
12:40	0.012	0.013	12:40	0.009	0.011	-
12:41	0.02	0.013	12:41	0.009	0.010	-
12:42	0.012	0.013	12:42	0.008	0.010	-
12:43	0.013	0.013	12:43	0.009	0.010	-
12:44	0.014	0.013	12:44	0.009	0.010	-
12:45	0.013	0.013	12:45	0.01	0.010	-
12:46	0.012	0.013	12:46	0.009	0.010	-
12:47	0.012	0.013	12:47	0.01	0.010	-
12:48	0.013	0.013	12:48	0.008	0.010	-
12:49	0.011	0.013	12:49	0.008	0.010	-
12:50	0.012	0.013	12:50	0.008	0.009	-
12:51	0.012	0.013	12:51	0.008	0.009	-
12:52	0.012	0.013	12:52	0.008	0.009	-
12:53	0.011	0.013	12:53	0.008	0.009	-
12:54	0.01	0.013	12:54	0.007	0.009	-
12:55	0.011	0.013	12:55	0.008	0.008	-
12:56	0.012	0.012	12:56	0.007	0.008	-
12:57	0.011	0.012	12:57	0.007	0.008	-
12:58	0.01	0.012	12:58	0.007	0.008	-
12:59	0.01	0.011	12:59	0.007	0.008	-
13:00	0.011	0.011	13:00	0.006	0.008	-
13:01	0.011	0.011	13:01	0.007	0.008	-
13:02	0.012	0.011	13:02	0.007	0.007	-
13:03	0.011	0.011	13:03	0.006	0.007	-
13:04	0.011	0.011	13:04	0.006	0.007	-
13:05	0.01	0.011	13:05	0.02	0.008	-
13:06	0.009	0.011	13:06	0.007	0.008	-
13:07	0.009	0.011	13:07	0.007	0.008	-
13:08	0.01	0.011	13:08	0.007	0.008	-
13:09	0.01	0.011	13:09	0.007	0.008	-
13:10	0.01	0.010	13:10	0.007	0.008	-
13:11	0.01	0.010	13:11	0.007	0.008	-
13:12	0.011	0.010	13:12	0.007	0.008	-
13:13	0.009	0.010	13:13	0.007	0.008	-
13:14	0.01	0.010	13:14	0.008	0.008	-
13:15	0.011	0.010	13:15	0.008	0.008	-
13:16	0.01	0.010	13:16	0.007	0.008	-
13:17	0.009	0.010	13:17	0.007	0.008	-
13:18	0.01	0.010	13:18	0.008	0.008	-
13:19	0.01	0.010	13:19	0.008	0.008	-
13:20	0.009	0.010	13:20	0.007	0.007	-
13:21	0.01	0.010	13:21	0.006	0.007	-
13:22	0.011	0.010	13:22	0.006	0.007	-
13:23	0.01	0.010	13:23	0.006	0.007	-
13:24	0.01	0.010	13:24	0.008	0.007	-
13:25	0.01	0.010	13:25	0.009	0.007	-
13:26	0.01	0.010	13:26	0.009	0.007	-
13:27	0.01	0.010	13:27	0.01	0.008	-
13:28	0.01	0.010	13:28	0.008	0.008	-
13:29	0.01	0.010	13:29	0.011	0.008	-
13:30	0.01	0.010	13:30	0.016	0.008	-
13:31	0.011	0.010	13:31	0.01	0.009	-
13:32	0.011	0.010	13:32	0.011	0.009	-
13:33	0.01	0.010	13:33	0.008	0.009	-
13:34	0.011	0.010	13:34	0.007	0.009	-
13:35	0.01	0.010	13:35	0.007	0.009	-
13:36	0.011	0.010	13:36	0.009	0.009	-
13:37	0.01	0.010	13:37	0.008	0.009	-
13:38	0.009	0.010	13:38	0.007	0.009	-
13:39	0.009	0.010	13:39	0.006	0.009	-
13:40	0.01	0.010	13:40			
13:41	0.013	0.010	13:41			
13:42	0.012	0.010	13:42			
13:43	0.013	0.011	13:43			
13:44	0.014	0.011	13:44			
13:45	0.011	0.011	13:45			
13:46	0.015	0.011	13:46			
13:47	0.024	0.012	13:47			
13:48	0.014	0.012	13:48			
13:49	0.015	0.013	13:49			
13:50	0.011	0.013	13:50			
13:51	0.01	0.013	13:51			
13:52	0.011	0.013	13:52			
13:53	0.012	0.013	13:53			
13:54	0.011	0.013	13:54			
13:55	0.01	0.013	13:55			
13:56	0.01	0.013	13:56			

Friday, June 5, 2025						
Number of Instances Where Downwind VOCs Exceeds Upwind VOCs + 5 =						0
Number of Comparable Data Points =						334
Start Time:						7:25
End Time:						13:56
PID DATA						
Upwind			Downwind			Exceeds VOCs Alarm Limits
Time	VOC (ppm)	15-Minute Average	Time	VOC (ppm)	15-Minute Average	
7:25	0.221		7:25	0.2		
7:26	0.131		7:26	0		
7:27	0.129		7:27	0		
7:28	0.127		7:28	0		
7:29	0.129		7:29	0		
7:30	0.127		7:30	0		
7:31	0.132		7:31	0		
7:32	0.132		7:32	0		
7:33	0.134		7:33	0		
7:34	0.14		7:34	0		
7:35	0.141		7:35	0		
7:36	0.142		7:36	0		
7:37	0.14		7:37	0		
7:38	0.146		7:38	0		
7:39	0.144	0.1	7:39	0		
7:40	0.141	0.1	7:40	0		
7:41	0.146	0.1	7:41	0		
7:42	0.149	0.1	7:42	0.1		
7:43	0.15	0.1	7:43	0.1		
7:44	0.15	0.1	7:44	0.1		
7:45	0.153	0.1	7:45	0.1		
7:46	0.157	0.1	7:46	0.1		
7:47	0.152	0.1	7:47	0.1		
7:48	0.147	0.1	7:48	0.1		
7:49	0.146	0.1	7:49	0.1	0.1	-
7:50	0.148	0.1	7:50	0.1	0.1	-
7:51	0.152	0.1	7:51	0.1	0.1	-
7:52	0.153	0.1	7:52	0.1	0.1	-
7:53	0.153	0.1	7:53	0.1	0.1	-
7:54	0.153	0.2	7:54	0.1	0.1	-
7:55	0.156	0.2	7:55	0.1	0.1	-
7:56	0.157	0.2	7:56	0.1	0.1	-
7:57	0.118	0.1	7:57	0.1	0.1	-
7:58	0.11	0.1	7:58	0.1	0.1	-
7:59	0.117	0.1	7:59	0.1	0.1	-
8:00	0.123	0.1	8:00	0.1	0.1	-
8:01	0.123	0.1	8:01	0.1	0.1	-
8:02	0.132	0.1	8:02	0.1	0.1	-
8:03	0.138	0.1	8:03	0.1	0.1	-
8:04	0.138	0.1	8:04	0.1	0.1	-
8:05	0.143	0.1	8:05	0.1	0.1	-
8:06	0.15	0.1	8:06	0.1	0.1	-
8:07	0.151	0.1	8:07	0.1	0.1	-
8:08	0.152	0.1	8:08	0.1	0.1	-
8:09	0.154	0.1	8:09	0.1	0.1	-
8:10	0.153	0.1	8:10	0.1	0.1	-
8:11	0.157	0.1	8:11	0.1	0.1	-
8:12	0.156	0.1	8:12	0.1	0.1	-
8:13	0.158	0.1	8:13	0.1	0.1	-
8:14	0.165	0.1	8:14	0.1	0.1	-
8:15	0.169	0.1	8:15	0.1	0.1	-
8:16	0.169	0.2	8:16	0.1	0.1	-
8:17	0.167	0.2	8:17	0.1	0.1	-
8:18	0.168	0.2	8:18	0.1	0.1	-
8:19	0.166	0.2	8:19	0.1	0.1	-
8:20	0.165	0.2	8:20	0.1	0.1	-
8:21	0.164	0.2	8:21	0.1	0.1	-
8:22	0.167	0.2	8:22	0.1	0.1	-
8:23	0.167	0.2	8:23	0.1	0.1	-
8:24	0.17	0.2	8:24	0.2	0.1	-
8:25	0.171	0.2	8:25	0.1	0.1	-
8:26	0.171	0.2	8:26	0.2	0.1	-
8:27	0.171	0.2	8:27	0.2	0.1	-
8:28	0.168	0.2	8:28	0.2	0.1	-
8:29	0.171	0.2	8:29	0.2	0.1	-
8:30	0.173	0.2	8:30	0.2	0.1	-
8:31	0.174	0.2	8:31	0.2	0.1	-
8:32	0.172	0.2	8:32	0.2	0.2	-
8:33	0.173	0.2	8:33	0.2	0.2	-
8:34	0.173	0.2	8:34	0.2	0.2	-
8:35	0.177	0.2	8:35	0.2	0.2	-
8:36	0.173	0.2	8:36	0.2	0.2	-
8:37	0.177	0.2	8:37	0.2	0.2	-
8:38	0.182	0.2	8:38	0.2	0.2	-
8:39	0.183	0.2	8:39	0.2	0.2	-
8:40	0.182	0.2	8:40	0.2	0.2	-
8:41	0.186	0.2	8:41	0.2	0.2	-
8:42	0.187	0.2	8:42	0.2	0.2	-

PID DATA						
Upwind			Downwind			Exceeds VOCs Alarm Limits
Time	VOC (ppm)	15-Minute Average	Time	VOC (ppm)	15-Minute Average	
8:43	0.192	0.2	8:43	0.2	0.2	-
8:44	0.191	0.2	8:44	0.2	0.2	-
8:45	0.192	0.2	8:45	0.2	0.2	-
8:46	0.194	0.2	8:46	0.2	0.2	-
8:47	0.199	0.2	8:47	0.2	0.2	-
8:48	0.198	0.2	8:48	0.2	0.2	-
8:49	0.198	0.2	8:49	0.2	0.2	-
8:50	0.194	0.2	8:50	0.2	0.2	-
8:51	0.2	0.2	8:51	0.2	0.2	-
8:52	0.202	0.2	8:52	0.2	0.2	-
8:53	0.204	0.2	8:53	0.2	0.2	-
8:54	0.201	0.2	8:54	0.2	0.2	-
8:55	0.202	0.2	8:55	0.2	0.2	-
8:56	0.209	0.2	8:56	0.2	0.2	-
8:57	0.21	0.2	8:57	0.2	0.2	-
8:58	0.21	0.2	8:58	0.2	0.2	-
8:59	0.211	0.2	8:59	0.2	0.2	-
9:00	0.207	0.2	9:00	0.2	0.2	-
9:01	0.211	0.2	9:01	0.2	0.2	-
9:02	0.215	0.2	9:02	0.2	0.2	-
9:03	0.218	0.2	9:03	0.2	0.2	-
9:04	0.219	0.2	9:04	0.2	0.2	-
9:05	0.217	0.2	9:05	0.2	0.2	-
9:06	0.218	0.2	9:06	0.2	0.2	-
9:07	0.216	0.2	9:07	0.2	0.2	-
9:08	0.219	0.2	9:08	0.2	0.2	-
9:09	0.221	0.2	9:09	0.2	0.2	-
9:10	0.222	0.2	9:10	0.2	0.2	-
9:11	0.222	0.2	9:11	0.2	0.2	-
9:12	0.222	0.2	9:12	0.2	0.2	-
9:13	0.224	0.2	9:13	0.2	0.2	-
9:14	0.229	0.2	9:14	0.2	0.2	-
9:15	0.229	0.2	9:15	0.2	0.2	-
9:16	0.226	0.2	9:16	0.2	0.2	-
9:17	0.222	0.2	9:17	0.2	0.2	-
9:18	0.228	0.2	9:18	0.2	0.2	-
9:19	0.224	0.2	9:19	0.2	0.2	-
9:20	0.226	0.2	9:20	0.2	0.2	-
9:21	0.228	0.2	9:21	0.2	0.2	-
9:22	0.225	0.2	9:22	0.2	0.2	-
9:23	0.223	0.2	9:23	0.2	0.2	-
9:24	0.227	0.2	9:24	0.2	0.2	-
9:25	0.226	0.2	9:25	0.2	0.2	-
9:26	0.225	0.2	9:26	0.2	0.2	-
9:27	0.225	0.2	9:27	0.2	0.2	-
9:28	0.22	0.2	9:28	0.2	0.2	-
9:29	0.221	0.2	9:29	0.2	0.2	-
9:30	0.222	0.2	9:30	0.2	0.2	-
9:31	0.222	0.2	9:31	0.2	0.2	-
9:32	0.225	0.2	9:32	0.2	0.2	-
9:33	0.226	0.2	9:33	0.2	0.2	-
9:34	0.227	0.2	9:34	0.2	0.2	-
9:35	0.23	0.2	9:35	0.2	0.2	-
9:36	0.229	0.2	9:36	0.2	0.2	-
9:37	0.228	0.2	9:37	0.2	0.2	-
9:38	0.228	0.2	9:38	0.2	0.2	-
9:39	0.23	0.2	9:39	0.2	0.2	-
9:40	0.232	0.2	9:40	0.2	0.2	-
9:41	0.235	0.2	9:41	0.2	0.2	-
9:42	0.237	0.2	9:42	0.2	0.2	-
9:43	0.238	0.2	9:43	0.2	0.2	-
9:44	0.235	0.2	9:44	0.2	0.2	-
9:45	0.238	0.2	9:45	0.2	0.2	-
9:46	0.237	0.2	9:46	0.2	0.2	-
9:47	0.24	0.2	9:47	0.2	0.2	-
9:48	0.236	0.2	9:48	0.2	0.2	-
9:49	0.235	0.2	9:49	0.2	0.2	-
9:50	0.238	0.2	9:50	0.2	0.2	-
9:51	0.238	0.2	9:51	0.2	0.2	-
9:52	0.24	0.2	9:52	0.2	0.2	-
9:53	0.24	0.2	9:53	0.2	0.2	-
9:54	0.238	0.2	9:54	0.2	0.2	-
9:55	0.238	0.2	9:55	0.2	0.2	-
9:56	0.236	0.2	9:56	0.2	0.2	-
9:57	0.235	0.2	9:57	0.2	0.2	-
9:58	0.234	0.2	9:58	0.2	0.2	-
9:59	0.235	0.2	9:59	0.2	0.2	-
10:00	0.234	0.2	10:00	0.2	0.2	-
10:01	0.242	0.2	10:01	0.2	0.2	-
10:02	0.24	0.2	10:02	0.2	0.2	-
10:03	0.238	0.2	10:03	0.2	0.2	-
10:04	0.238	0.2	10:04	0.2	0.2	-
10:05	0.236	0.2	10:05	0.2	0.2	-
10:06	0.236	0.2	10:06	0.2	0.2	-

PID DATA						
Upwind			Downwind			Exceeds VOCs Alarm Limits
Time	VOC (ppm)	15-Minute Average	Time	VOC (ppm)	15-Minute Average	
10:07	0.238	0.2	10:07	0.2	0.2	-
10:08	0.239	0.2	10:08	0.2	0.2	-
10:09	0.239	0.2	10:09	0.2	0.2	-
10:10	0.241	0.2	10:10	0.2	0.2	-
10:11	0.244	0.2	10:11	0.2	0.2	-
10:12	0.248	0.2	10:12	0.2	0.2	-
10:13	0.246	0.2	10:13	0.2	0.2	-
10:14	0.243	0.2	10:14	0.2	0.2	-
10:15	0.243	0.2	10:15	0.2	0.2	-
10:16	0.244	0.2	10:16	0.2	0.2	-
10:17	0.245	0.2	10:17	0.2	0.2	-
10:18	0.238	0.2	10:18	0.2	0.2	-
10:19	0.166	0.2	10:19	0.2	0.2	-
10:20	0.162	0.2	10:20	0.2	0.2	-
10:21	0.174	0.2	10:21	0.2	0.2	-
10:22	0.184	0.2	10:22	0.2	0.2	-
10:23	0.187	0.2	10:23	0.2	0.2	-
10:24	0.197	0.2	10:24	0.2	0.2	-
10:25	0.198	0.2	10:25	0.2	0.2	-
10:26	0.2	0.2	10:26	0.2	0.2	-
10:27	0.206	0.2	10:27	0.2	0.2	-
10:28	0.211	0.2	10:28	0.2	0.2	-
10:29	0.211	0.2	10:29	0.2	0.2	-
10:30	0.214	0.2	10:30	0.2	0.2	-
10:31	0.212	0.2	10:31	0.2	0.2	-
10:32	0.216	0.2	10:32	0.2	0.2	-
10:33	0.22	0.2	10:33	0.2	0.2	-
10:34	0.219	0.2	10:34	0.2	0.2	-
10:35	0.219	0.2	10:35	0.2	0.2	-
10:36	0.219	0.2	10:36	0.2	0.2	-
10:37	0.218	0.2	10:37	0.2	0.2	-
10:38	0.217	0.2	10:38	0.2	0.2	-
10:39	0.22	0.2	10:39	0.2	0.2	-
10:40	0.221	0.2	10:40	0.2	0.2	-
10:41	0.22	0.2	10:41	0.2	0.2	-
10:42	0.223	0.2	10:42	0.2	0.2	-
10:43	0.224	0.2	10:43	0.2	0.2	-
10:44	0.226	0.2	10:44	0.2	0.2	-
10:45	0.226	0.2	10:45	0.2	0.2	-
10:46	0.226	0.2	10:46	0.2	0.2	-
10:47	0.229	0.2	10:47	0.2	0.2	-
10:48	0.229	0.2	10:48	0.2	0.2	-
10:49	0.229	0.2	10:49	0.2	0.2	-
10:50	0.23	0.2	10:50	0.2	0.2	-
10:51	0.23	0.2	10:51	0.2	0.2	-
10:52	0.224	0.2	10:52	0.2	0.2	-
10:53	0.222	0.2	10:53	0.2	0.2	-
10:54	0.222	0.2	10:54	0.2	0.2	-
10:55	0.227	0.2	10:55	0.2	0.2	-
10:56	0.23	0.2	10:56	0.2	0.2	-
10:57	0.234	0.2	10:57	0.2	0.2	-
10:58	0.231	0.2	10:58	0.2	0.2	-
10:59	0.233	0.2	10:59	0.2	0.2	-
11:00	0.235	0.2	11:00	0.2	0.2	-
11:01	0.237	0.2	11:01	0.2	0.2	-
11:02	0.237	0.2	11:02	0.2	0.2	-
11:03	0.236	0.2	11:03	0.2	0.2	-
11:04	0.234	0.2	11:04	0.2	0.2	-
11:05	0.236	0.2	11:05	0.2	0.2	-
11:06	0.234	0.2	11:06	0.2	0.2	-
11:07	0.231	0.2	11:07	0.2	0.2	-
11:08	0.235	0.2	11:08	0.2	0.2	-
11:09	0.235	0.2	11:09	0.2	0.2	-
11:10	0.232	0.2	11:10	0.2	0.2	-
11:11	0.227	0.2	11:11	0.1	0.2	-
11:12	0.226	0.2	11:12	0.1	0.2	-
11:13	0.227	0.2	11:13	0.1	0.2	-
11:14	0.225	0.2	11:14	0.2	0.2	-
11:15	0.225	0.2	11:15	0.1	0.2	-
11:16	0.225	0.2	11:16	0.1	0.2	-
11:17	0.228	0.2	11:17	0.1	0.2	-
11:18	0.227	0.2	11:18	0.1	0.2	-
11:19	0.229	0.2	11:19	0.1	0.1	-
11:20	0.23	0.2	11:20	0.1	0.1	-
11:21	0.202	0.2	11:21	0.1	0.1	-
11:22	0.187	0.2	11:22	0.1	0.1	-
11:23	0.194	0.2	11:23	0.1	0.1	-
11:24	0.198	0.2	11:24	0.1	0.1	-
11:25	0.205	0.2	11:25	0.1	0.1	-
11:26	0.21	0.2	11:26	0.1	0.1	-
11:27	0.212	0.2	11:27	0.1	0.1	-
11:28	0.211	0.2	11:28	0.1	0.1	-
11:29	0.215	0.2	11:29	0.1	0.1	-
11:30	0.214	0.2	11:30	0.1	0.1	-

PID DATA						
Upwind			Downwind			Exceeds VOCs Alarm Limits
Time	VOC (ppm)	15-Minute Average	Time	VOC (ppm)	15-Minute Average	
11:31	0.219	0.2	11:31	0.1	0.1	-
11:32	0.223	0.2	11:32	0.1	0.1	-
11:33	0.231	0.2	11:33	0.1	0.1	-
11:34	0.226	0.2	11:34	0.1	0.1	-
11:35	0.228	0.2	11:35	0.1	0.1	-
11:36	0.231	0.2	11:36	0.1	0.1	-
11:37	0.231	0.2	11:37	0.1	0.1	-
11:38	0.233	0.2	11:38	0.1	0.1	-
11:39	0.235	0.2	11:39	0.1	0.1	-
11:40	0.236	0.2	11:40	0.1	0.1	-
11:41	0.236	0.2	11:41	0.1	0.1	-
11:42	0.23	0.2	11:42	0.1	0.1	-
11:43	0.231	0.2	11:43	0.1	0.1	-
11:44	0.231	0.2	11:44	0.1	0.1	-
11:45	0.229	0.2	11:45	0.1	0.1	-
11:46	0.231	0.2	11:46	0.1	0.1	-
11:47	0.23	0.2	11:47	0.1	0.1	-
11:48	0.23	0.2	11:48	0.1	0.1	-
11:49	0.228	0.2	11:49	0.1	0.1	-
11:50	0.229	0.2	11:50	0.1	0.1	-
11:51	0.228	0.2	11:51	0.1	0.1	-
11:52	0.226	0.2	11:52	0.1	0.1	-
11:53	0.225	0.2	11:53	0.1	0.1	-
11:54	0.225	0.2	11:54	0.1	0.1	-
11:55	0.226	0.2	11:55	0.1	0.1	-
11:56	0.226	0.2	11:56	0.1	0.1	-
11:57	0.226	0.2	11:57	0.1	0.1	-
11:58	0.229	0.2	11:58	0.1	0.1	-
11:59	0.231	0.2	11:59	0.1	0.1	-
12:00	0.232	0.2	12:00	0.1	0.1	-
12:01	0.236	0.2	12:01	0.1	0.1	-
12:02	0.238	0.2	12:02	0.1	0.1	-
12:03	0.237	0.2	12:03	0.1	0.1	-
12:04	0.238	0.2	12:04	0.1	0.1	-
12:05	0.239	0.2	12:05	0.1	0.1	-
12:06	0.238	0.2	12:06	0.1	0.1	-
12:07	0.237	0.2	12:07	0.1	0.1	-
12:08	0.237	0.2	12:08	0.1	0.1	-
12:09	0.237	0.2	12:09	0.1	0.1	-
12:10	0.237	0.2	12:10	0.1	0.1	-
12:11	0.238	0.2	12:11	0.1	0.1	-
12:12	0.234	0.2	12:12	0.1	0.1	-
12:13	0.231	0.2	12:13	0.1	0.1	-
12:14	0.231	0.2	12:14	0.1	0.1	-
12:15	0.23	0.2	12:15	0.1	0.1	-
12:16	0.231	0.2	12:16	0.1	0.1	-
12:17	0.231	0.2	12:17	0.1	0.1	-
12:18	0.234	0.2	12:18	0.1	0.1	-
12:19	0.229	0.2	12:19	0.1	0.1	-
12:20	0.232	0.2	12:20	0.1	0.1	-
12:21	0.229	0.2	12:21	0.1	0.1	-
12:22	0.228	0.2	12:22	0.1	0.1	-
12:23	0.227	0.2	12:23	0.1	0.1	-
12:24	0.232	0.2	12:24	0.1	0.1	-
12:25	0.233	0.2	12:25	0.1	0.1	-
12:26	0.233	0.2	12:26	0.1	0.1	-
12:27	0.231	0.2	12:27	0.1	0.1	-
12:28	0.236	0.2	12:28	0.1	0.1	-
12:29	0.232	0.2	12:29	0.1	0.1	-
12:30	0.231	0.2	12:30	0.1	0.1	-
12:31	0.235	0.2	12:31	0.1	0.1	-
12:32	0.238	0.2	12:32	0.1	0.1	-
12:33	0.238	0.2	12:33	0.1	0.1	-
12:34	0.238	0.2	12:34	0.1	0.1	-
12:35	0.236	0.2	12:35	0.1	0.1	-
12:36	0.233	0.2	12:36	0.1	0.1	-
12:37	0.234	0.2	12:37	0.1	0.1	-
12:38	0.237	0.2	12:38	0.1	0.1	-
12:39	0.236	0.2	12:39	0.1	0.1	-
12:40	0.235	0.2	12:40	0.1	0.1	-
12:41	0.237	0.2	12:41	0.1	0.1	-
12:42	0.236	0.2	12:42	0.1	0.1	-
12:43	0.238	0.2	12:43	0.1	0.1	-
12:44	0.24	0.2	12:44	0.1	0.1	-
12:45	0.241	0.2	12:45	0.1	0.1	-
12:46	0.241	0.2	12:46	0.1	0.1	-

PID DATA						
Upwind			Downwind			Exceeds VOCs Alarm Limits
Time	VOC (ppm)	15-Minute Average	Time	VOC (ppm)	15-Minute Average	
12:47	0.237	0.2	12:47	0.1	0.1	-
12:48	0.238	0.2	12:48	0.1	0.1	-
12:49	0.241	0.2	12:49	0.1	0.1	-
12:50	0.241	0.2	12:50	0.1	0.1	-
12:51	0.242	0.2	12:51	0.1	0.1	-
12:52	0.24	0.2	12:52	0.1	0.1	-
12:53	0.24	0.2	12:53	0.1	0.1	-
12:54	0.245	0.2	12:54	0.1	0.1	-
12:55	0.241	0.2	12:55	0.1	0.1	-
12:56	0.243	0.2	12:56	0.1	0.1	-
12:57	0.243	0.2	12:57	0.1	0.1	-
12:58	0.245	0.2	12:58	0.1	0.1	-
12:59	0.244	0.2	12:59	0.1	0.1	-
13:00	0.242	0.2	13:00	0.1	0.1	-
13:01	0.244	0.2	13:01	0.1	0.1	-
13:02	0.242	0.2	13:02	0.1	0.1	-
13:03	0.245	0.2	13:03	0.1	0.1	-
13:04	0.246	0.2	13:04	0.1	0.1	-
13:05	0.242	0.2	13:05	0.1	0.1	-
13:06	0.243	0.2	13:06	0.1	0.1	-
13:07	0.241	0.2	13:07	0.1	0.1	-
13:08	0.239	0.2	13:08	0.1	0.1	-
13:09	0.237	0.2	13:09	0.1	0.1	-
13:10	0.242	0.2	13:10	0.1	0.1	-
13:11	0.245	0.2	13:11	0.1	0.1	-
13:12	0.247	0.2	13:12	0.1	0.1	-
13:13	0.243	0.2	13:13	0.1	0.1	-
13:14	0.249	0.2	13:14	0.1	0.1	-
13:15	0.249	0.2	13:15	0.1	0.1	-
13:16	0.249	0.2	13:16	0.1	0.1	-
13:17	0.246	0.2	13:17	0.1	0.1	-
13:18	0.246	0.2	13:18	0.1	0.1	-
13:19	0.245	0.2	13:19	0.1	0.1	-
13:20	0.25	0.2	13:20	0.1	0.1	-
13:21	0.251	0.2	13:21	0.1	0.1	-
13:22	0.251	0.2	13:22	0.1	0.1	-
13:23	0.248	0.2	13:23	0.1	0.1	-
13:24	0.25	0.2	13:24	0.1	0.1	-
13:25	0.253	0.2	13:25	0.1	0.1	-
13:26	0.253	0.2	13:26	0.1	0.1	-
13:27	0.248	0.2	13:27	0.1	0.1	-
13:28	0.245	0.2	13:28	0.1	0.1	-
13:29	0.247	0.2	13:29	0.1	0.1	-
13:30	0.249	0.2	13:30	0.1	0.1	-
13:31	0.248	0.2	13:31	0.1	0.1	-
13:32	0.247	0.2	13:32	0.1	0.1	-
13:33	0.247	0.2	13:33	0.1	0.1	-
13:34	0.248	0.2	13:34	0.1	0.1	-
13:35	0.246	0.2	13:35	0.1	0.1	-
13:36	0.245	0.2	13:36	0.1	0.1	-
13:37	0.247	0.2	13:37	0.1	0.1	-
13:38	0.248	0.2	13:38	0.1	0.1	-
13:39	0.245	0.2	13:39	0.1	0.1	-
13:40	0.242	0.2	13:40	0.1	0.1	-
13:41			13:41	0.1	0.1	-
13:42			13:42	0.1	0.1	-
13:43			13:43	0.1	0.1	-
13:44			13:44	0.1	0.1	-
13:45			13:45	0.1	0.1	-
13:46			13:46	0.1	0.1	-
13:47			13:47	0.1	0.1	-
13:48			13:48	0.1	0.1	-
13:49			13:49	0.1	0.1	-
13:50			13:50	0.1	0.1	-
13:51			13:51	0.1	0.1	-
13:52			13:52	0.1	0.1	-
13:53			13:53	0.1	0.1	-
13:54			13:54	0.1	0.1	-
13:55			13:55	0.1	0.1	-
13:56			13:56	0.1	0.1	-