

## DAILY OBSERVATION REPORT

# LANGAN

<b>PROJECT No.:</b> 170824801  <b>PROJECT:</b> 172 Montrose Avenue  <b>LOCATION:</b> Brooklyn, New York  <b>BCP SITE NUMBER:</b> C224417	<b>CLIENT:</b>  Montrose Meserole Owner LLC	<b>DATE:</b> Monday, June 8, 2026  <b>WEATHER:</b> Sunny, 72-89 °F Wind: SSW @ 5-13 mph  <b>TIME:</b> 7:00 – 15:00  <b>MONITOR:</b> Aron Farber	
<b>EQUIPMENT:</b> Geoprobe 7822DT Drill Rig Hand Tools Interface Probe Community Air Monitoring Plan Stations Handheld Photoionization Detector	<b>PRESENT AT SITE:</b> <b>Environmental Staff (Langan):</b> Aron Farber <b>Environmental Drilling Contractor (EPhase 2):</b> Luke Reiss, Sam Yanuck		
<p><b>OBSERVATIONS, DISCUSSIONS, TEST RESULTS, ETC.:</b> Langan was present to perform work in accordance with the New York State Department of Environmental Conservation (NYSDEC)-approved Treatability Study Work Plan (TSWP) and the Remedial Action Work Plan (RAWP) for Brownfield Cleanup Program (BCP) Site No. C224417 at 172 Montrose Avenue (Block 3062, Lot 12). Observed activities were as follows:</p> <p><b>Site Activities</b></p> <ul style="list-style-type: none"> <li>• EPhase 2 attempted soil boring advancement at location TS01 as part of the TSWP; however, the drill rig malfunctioned and boring advancement at this location was paused.</li> <li>• Langan collected three baseline groundwater samples, one each from monitoring wells MW01, MW03 and MW06 in the northern part of the site.</li> </ul>			
<b>Cc:</b>	C. Devin, S. Fernholz, K. Semon, B. Gochenaur (Langan)	<b>By:</b>	Aron Farber  <b>LANGAN</b>

**Sampling**

- Langan collected groundwater samples for laboratory analysis. Samples were relinquished to Pace Analytical, a New York State Department of Health (NYSDOH) Environmental Laboratory Approval Program (ELAP) laboratory under standard chain-of-custody protocol.
- The following groundwater samples were analyzed for Part 375/Target Compound List (TCL) Volatile Organic Compounds (VOC):
  - MW01\_060826
  - MW03\_060826
  - MW06\_060826 (MS/MSD collected)
- The following QA/QC samples were submitted for analysis of Part 375/TCL VOCs:
  - GWDUP01\_060826
  - GWTB02\_060826

**Community Air Monitoring Plan (CAMP) Activities**

- Langan set up CAMP stations at the upwind and downwind site perimeters to monitor VOCs and particulate matter less than 10 micrometers (µm) in diameter (PM10) during intrusive activity. PM10 and VOC concentrations did not exceed the action levels established in the site CAMP. Fugitive dust or odors associated with intrusive activities were not observed.

**Anticipated Activities**

- EPhase 2 will continue soil sample collection and groundwater monitoring well installation.

Cc:	C. Devin, S. Fernholz, K. Semon, B. Gochenaur (Langan)	By:	Aron Farber <b>LANGAN</b>
-----	---	-----	------------------------------

**Site Photographs:**



**Photo 1:** View of low-flow groundwater sampling setup at monitoring well MW06 (facing northeast).



**Photo 2:** View of low-flow groundwater sampling setup at monitoring well MW03 (facing northeast).

Cc:	C. Devin, S. Fernholz, K. Semon, B. Gochenaur (Langan)	By:	Aron Farber <b>LANGAN</b>
-----	--	-----	------------------------------

**Figure 1: Monitoring Well Location Map**



**Legend**

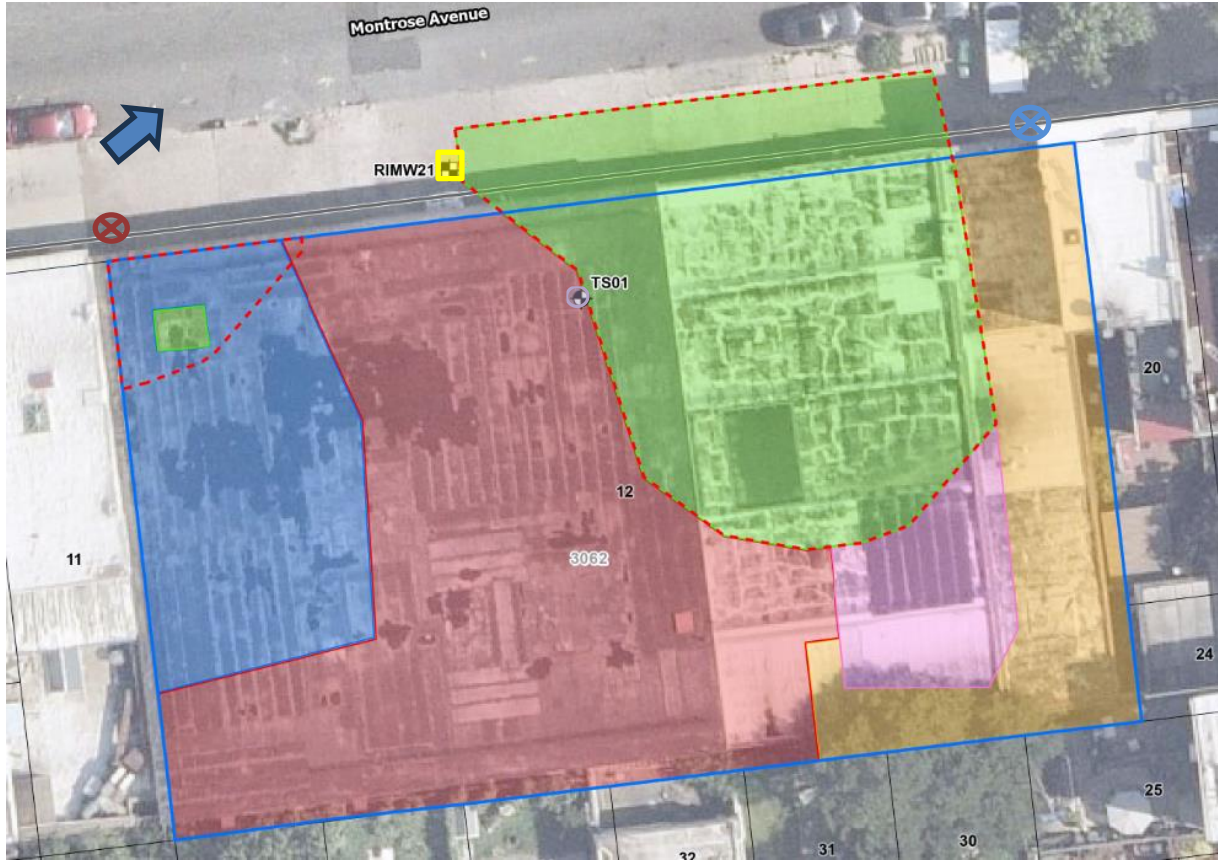
- Approximate Site Boundary
- Tax Block
- Tax Parcel

- Waste Characterization Boring
- Lead Delineation Boring
- SVE well boring
- GW Treatability boring




- Monitoring Well Boring Advanced and Installed
- Monitoring Well Sampled
- ⊗ Upwind CAMP Station
- ⊗ Downwind CAMP Station
- ↑ Wind Direction
- Drum Staging Area

Cc:	C. Devin, S. Fernholz, K. Semon, B. Gochenaur (Langan)	By:	Aron Farber <b>LANGAN</b>
-----	--	-----	------------------------------

**Figure 2: TSWP Boring Location Map**



**Legend**

-  Proposed Groundwater Treatability Soil Boring Location
-  Proposed Groundwater Treatability Groundwater Sample Location
-  Approximate Site Boundary
-  Tax Block
-  Tax Parcel
-  Excavation to about 2 feet bgs
-  Excavation to about 4 feet bgs
-  Excavation to about 10 feet bgs
-  Excavation to about 12 feet bgs
-  Excavation to about 15 to 17 feet bgs
-  Approximate Groundwater Treatment Extent
-  Soil Boring Attempted Today
-  Upwind CAMP Station
-  Downwind CAMP Station
-  Wind Direction
-  Monitoring Well Sampled

Cc: C. Devin, S. Fernholz, K. Semon, B. Gochenaur (Langan)

By: Aron Farber  
**LANGAN**

Date: Monday, June 8, 2026

Start: 7:33

End: 14:38

Observer: Aron Farber

**UPWIND - UW**  
**DOWNWIND - DW**

Particulate Monitoring		
	UW	DW
Daily Average	0.005	0.008
Minimum 15min Average	0.001	0.005
Maximum 15min Average	0.016	0.050
High Intervals "exceedances" (15min > 1.5 + Upwind level)	NA	0.0
Minimum 1min Reading	0.001	0.004
Maximum 1min Reading	0.194	0.050

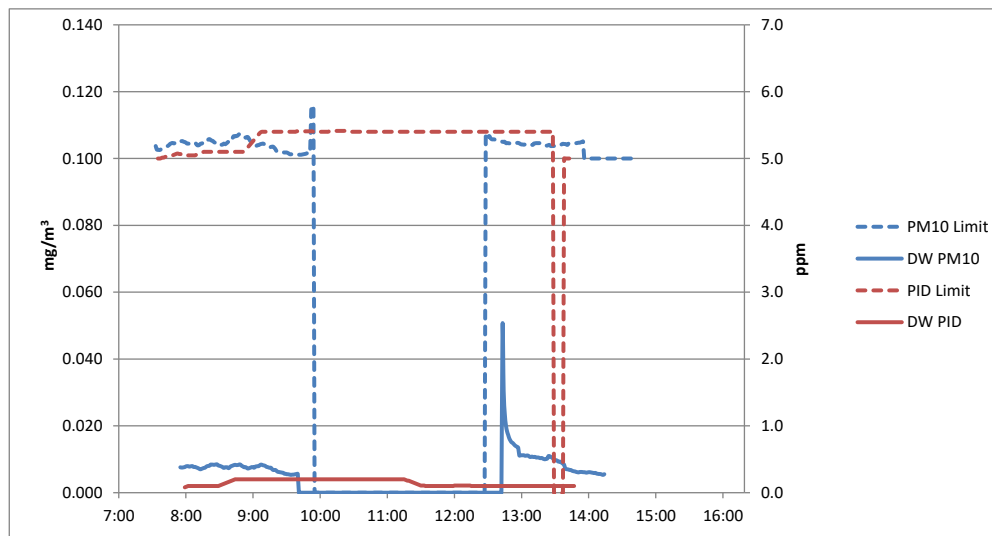
NA - Not applicable, upwind unit used for background concentrations

All reported units are mg/m<sup>3</sup> or milligrams per cubic meter unless specified otherwise

Organic Vapor Monitoring		
	UW	DW
Daily Average	0.3	0.1
Minimum 15min Average	0.0	0.1
Maximum 15min Average	0.4	0.2
High Intervals "exceedances" (15min > 5 + Upwind level)	NA	0.0
Minimum 1min Reading	0.0	0.0
Maximum 1min Reading	0.5	0.2

NA - Not applicable, upwind unit used for background concentrations

All reported units are ppm or parts per million unless specified otherwise



Monday, June 8, 2026						
Number of Instances Where Downwind Particulates Exceeds Upwind Particulate + 150 =						0
Number of Comparable Data Points =						193
Start Time:						7:33
End Time:						14:38
PARTICULATE DATA						
Upwind			Downwind			Exceeds Particulate Alarm Limits
Time	Concentration (mg/m <sup>3</sup> )	15-Minute Average	Time	Concentration (mg/m <sup>3</sup> )	15-Minute Average	
7:33	0.021		7:33			
7:34	0.003		7:34			
7:35	0.003		7:35	0.012		
7:36	0.003		7:36	0.007		
7:37	0.003		7:37	0.007		
7:38	0.003		7:38	0.008		
7:39	0.003		7:39	0.007		
7:40	0.003		7:40	0.009		
7:41	0.003		7:41	0.008		
7:42	0.003		7:42	0.008		
7:43	0.002		7:43	0.007		
7:44	0.001		7:44	0.007		
7:45	0.001		7:45	0.006		
7:46	0.002		7:46	0.007		
7:47	0.002	0.004	7:47	0.007		
7:48	0.005	0.003	7:48	0.008		
7:49	0.003	0.003	7:49	0.006		
7:50	0.001	0.003	7:50	0.006		
7:51	0.004	0.003	7:51	0.007		
7:52	0.006	0.003	7:52	0.01		
7:53	0.005	0.003	7:53	0.009		
7:54	0.007	0.003	7:54	0.009		
7:55	0.005	0.003	7:55	0.009	0.008	-
7:56	0.004	0.003	7:56	0.007	0.008	-
7:57	0.006	0.004	7:57	0.008	0.008	-
7:58	0.005	0.004	7:58	0.008	0.008	-
7:59	0.005	0.004	7:59	0.008	0.008	-
8:00	0.006	0.004	8:00	0.009	0.008	-
8:01	0.004	0.005	8:01	0.008	0.008	-
8:02	0.004	0.005	8:02	0.007	0.008	-
8:03	0.003	0.005	8:03	0.006	0.008	-
8:04	0.004	0.005	8:04	0.007	0.008	-
8:05	0.004	0.005	8:05	0.007	0.008	-
8:06	0.003	0.005	8:06	0.007	0.008	-
8:07	0.005	0.005	8:07	0.006	0.008	-
8:08	0.007	0.005	8:08	0.01	0.008	-
8:09	0.013	0.005	8:09	0.007	0.008	-
8:10	0.005	0.005	8:10	0.007	0.007	-
8:11	0.004	0.005	8:11	0.005	0.007	-
8:12	0.003	0.005	8:12	0.005	0.007	-
8:13	0.004	0.005	8:13	0.006	0.007	-
8:14	0.002	0.005	8:14	0.01	0.007	-
8:15	0.002	0.004	8:15	0.011	0.007	-
8:16	0.004	0.004	8:16	0.01	0.007	-
8:17	0.003	0.004	8:17	0.008	0.007	-
8:18	0.003	0.004	8:18	0.01	0.008	-
8:19	0.001	0.004	8:19	0.01	0.008	-
8:20	0.002	0.004	8:20	0.008	0.008	-
8:21	0.005	0.004	8:21	0.008	0.008	-
8:22	0.008	0.004	8:22	0.011	0.008	-
8:23	0.008	0.004	8:23	0.01	0.008	-
8:24	0.006	0.004	8:24	0.007	0.008	-
8:25	0.004	0.004	8:25	0.006	0.008	-
8:26	0.006	0.004	8:26	0.006	0.008	-
8:27	0.008	0.004	8:27	0.006	0.008	-
8:28	0.005	0.004	8:28	0.006	0.008	-
8:29	0.005	0.005	8:29	0.005	0.008	-
8:30	0.009	0.005	8:30	0.01	0.008	-
8:31	0.005	0.005	8:31	0.008	0.008	-
8:32	0.003	0.005	8:32	0.006	0.008	-
8:33	0.002	0.005	8:33	0.007	0.008	-
8:34	0.009	0.006	8:34	0.007	0.007	-
8:35	0.004	0.006	8:35	0.011	0.008	-
8:36	0.002	0.006	8:36	0.008	0.008	-
8:37	0.004	0.005	8:37	0.011	0.008	-
8:38	0.007	0.005	8:38	0.006	0.007	-
8:39	0.001	0.005	8:39	0.01	0.008	-
8:40	0.001	0.005	8:40	0.011	0.008	-
8:41	0.003	0.005	8:41	0.008	0.008	-
8:42	0.004	0.004	8:42	0.008	0.008	-
8:43	0.007	0.004	8:43	0.008	0.008	-
8:44	0.005	0.004	8:44	0.006	0.008	-
8:45	0.004	0.004	8:45	0.009	0.008	-
8:46	0.006	0.004	8:46	0.008	0.008	-
8:47	0.004	0.004	8:47	0.007	0.008	-
8:48	0.006	0.004	8:48	0.009	0.008	-
8:49	0.006	0.004	8:49	0.005	0.008	-

PARTICULATE DATA						
Upwind			Downwind			Exceeds Particulate Alarm Limits
Time	Concentration (mg/m <sup>3</sup> )	15-Minute Average	Time	Concentration (mg/m <sup>3</sup> )	15-Minute Average	
8:50	0.007	0.004	8:50	0.006	0.008	-
8:51	0.006	0.005	8:51	0.006	0.008	-
8:52	0.008	0.005	8:52	0.007	0.008	-
8:53	0.004	0.005	8:53	0.007	0.008	-
8:54	0.002	0.005	8:54	0.008	0.008	-
8:55	0.01	0.005	8:55	0.007	0.007	-
8:56	0.016	0.006	8:56	0.008	0.007	-
8:57	0.01	0.007	8:57	0.01	0.007	-
8:58	0.005	0.007	8:58	0.01	0.008	-
8:59	0.007	0.007	8:59	0.008	0.008	-
9:00	0.005	0.007	9:00	0.008	0.008	-
9:01	0.011	0.007	9:01	0.006	0.007	-
9:02	0.006	0.007	9:02	0.012	0.008	-
9:03	0.003	0.007	9:03	0.01	0.008	-
9:04	0.007	0.007	9:04	0.006	0.008	-
9:05	0.007	0.007	9:05	0.006	0.008	-
9:06	0.001	0.007	9:06	0.01	0.008	-
9:07	0.001	0.006	9:07	0.01	0.008	-
9:08	0.002	0.006	9:08	0.006	0.008	-
9:09	0.006	0.006	9:09	0.006	0.008	-
9:10	0.005	0.006	9:10	0.006	0.008	-
9:11	0.007	0.006	9:11	0.006	0.008	-
9:12	0.003	0.005	9:12	0.006	0.008	-
9:13	0.002	0.005	9:13	0.009	0.008	-
9:14	0.005	0.005	9:14	0.006	0.008	-
9:15	0.001	0.004	9:15	0.007	0.007	-
9:16	0.003	0.004	9:16	0.006	0.007	-
9:17	0.004	0.004	9:17	0.006	0.007	-
9:18	0.006	0.004	9:18	0.006	0.007	-
9:19	0.007	0.004	9:19	0.006	0.007	-
9:20	0.01	0.004	9:20	0.006	0.007	-
9:21	0.003	0.004	9:21	0.006	0.007	-
9:22	0.002	0.004	9:22	0.006	0.006	-
9:23	0.003	0.004	9:23	0.005	0.006	-
9:24	0.003	0.004	9:24	0.005	0.006	-
9:25	0.002	0.004	9:25	0.005	0.006	-
9:26	0.002	0.004	9:26	0.005	0.006	-
9:27	0.002	0.004	9:27	0.005	0.006	-
9:28	0.001	0.004	9:28	0.005	0.006	-
9:29	0.001	0.003	9:29	0.006	0.006	-
9:30	0.003	0.003	9:30	0.005	0.006	-
9:31	0.004	0.004	9:31	0.006	0.006	-
9:32	0.004	0.004	9:32	0.005	0.005	-
9:33	0.001	0.003	9:33	0.005	0.005	-
9:34	0.001	0.003	9:34	0.005	0.005	-
9:35	0.001	0.002	9:35	0.007	0.005	-
9:36	0.001	0.002	9:36	0.006	0.005	-
9:37	0.002	0.002	9:37	0.007	0.005	-
9:38	0.003	0.002	9:38	0.006	0.006	-
9:39	0.002	0.002	9:39	0.006	0.006	-
9:40	0.001	0.002	9:40	0.005	0.006	-
9:41	0.001	0.002	9:41			
9:42	0.001	0.002	9:42			
9:43	0.001	0.002	9:43			
9:44	0.001	0.002	9:44			
9:45	0.001	0.002	9:45			
9:46	0.001	0.001	9:46			
9:47	0.001	0.001	9:47			
9:48	0.001	0.001	9:48			
9:49	0.001	0.001	9:49			
9:50	0.001	0.001	9:50			
9:51	0.001	0.001	9:51			
9:52	0.001	0.001	9:52			
9:53	0.001	0.001	9:53			
9:54	0.002	0.001	9:54			
9:55	0.002	0.001	9:55			
9:56	0.001	0.001	9:56			
9:57	0.001	0.001	9:57			
9:58	0.002	0.001	9:58			
9:59	0.002	0.001	9:59			
10:00	0.002	0.001	10:00			
10:01	0.002	0.001	10:01			
10:02	0.003	0.002	10:02			
10:03	0.002	0.002	10:03			
10:04	0.001	0.002	10:04			
10:05	0.001	0.002	10:05			
10:06	0.194	0.014	10:06			
10:07	0.015	0.015	10:07			
10:08	0.008	0.016	10:08			
10:09			10:09			
10:10			10:10			
10:11			10:11			
10:12			10:12			
10:13			10:13			

PARTICULATE DATA						
Upwind			Downwind			Exceeds Particulate Alarm Limits
Time	Concentration (mg/m <sup>3</sup> )	15-Minute Average	Time	Concentration (mg/m <sup>3</sup> )	15-Minute Average	
10:14			10:14			
10:15			10:15			
10:16			10:16			
10:17			10:17			
10:18			10:18			
10:19			10:19			
10:20			10:20			
10:21			10:21			
10:22			10:22			
10:23			10:23			
10:24			10:24			
10:25			10:25			
10:26			10:26			
10:27			10:27			
10:28			10:28			
10:29			10:29			
10:30			10:30			
10:31			10:31			
10:32			10:32			
10:33			10:33			
10:34			10:34			
10:35			10:35			
10:36			10:36			
10:37			10:37			
10:38			10:38			
10:39			10:39			
10:40			10:40			
10:41			10:41			
10:42			10:42			
10:43			10:43			
10:44			10:44			
10:45			10:45			
10:46			10:46			
10:47			10:47			
10:48			10:48			
10:49			10:49			
10:50			10:50			
10:51			10:51			
10:52			10:52			
10:53			10:53			
10:54			10:54			
10:55			10:55			
10:56			10:56			
10:57			10:57			
10:58			10:58			
10:59			10:59			
11:00			11:00			
11:01			11:01			
11:02			11:02			
11:03			11:03			
11:04			11:04			
11:05			11:05			
11:06			11:06			
11:07			11:07			
11:08			11:08			
11:09			11:09			
11:10			11:10			
11:11			11:11			
11:12			11:12			
11:13			11:13			
11:14			11:14			
11:15			11:15			
11:16			11:16			
11:17			11:17			
11:18			11:18			
11:19			11:19			
11:20			11:20			
11:21			11:21			
11:22			11:22			
11:23			11:23			
11:24			11:24			
11:25			11:25			
11:26			11:26			
11:27			11:27			
11:28			11:28			
11:29			11:29			
11:30			11:30			
11:31			11:31			
11:32			11:32			
11:33			11:33			
11:34			11:34			
11:35			11:35			
11:36			11:36			
11:37			11:37			

PARTICULATE DATA						
Upwind			Downwind			Exceeds Particulate Alarm Limits
Time	Concentration (mg/m <sup>3</sup> )	15-Minute Average	Time	Concentration (mg/m <sup>3</sup> )	15-Minute Average	
11:38			11:38			
11:39			11:39			
11:40			11:40			
11:41			11:41			
11:42			11:42			
11:43			11:43			
11:44			11:44			
11:45			11:45			
11:46			11:46			
11:47			11:47			
11:48			11:48			
11:49			11:49			
11:50			11:50			
11:51			11:51			
11:52			11:52			
11:53			11:53			
11:54			11:54			
11:55			11:55			
11:56			11:56			
11:57			11:57			
11:58			11:58			
11:59			11:59			
12:00			12:00			
12:01			12:01			
12:02			12:02			
12:03			12:03			
12:04			12:04			
12:05			12:05			
12:06			12:06			
12:07			12:07			
12:08			12:08			
12:09			12:09			
12:10			12:10			
12:11			12:11			
12:12			12:12			
12:13			12:13			
12:14			12:14			
12:15			12:15			
12:16			12:16			
12:17			12:17			
12:18			12:18			
12:19			12:19			
12:20			12:20			
12:21			12:21			
12:22			12:22			
12:23			12:23			
12:24			12:24			
12:25			12:25			
12:26			12:26			
12:27			12:27			
12:28			12:28			
12:29			12:29			
12:30			12:30			
12:31			12:31			
12:32			12:32			
12:33			12:33			
12:34			12:34			
12:35			12:35			
12:36			12:36			
12:37			12:37			
12:38			12:38			
12:39			12:39			
12:40			12:40			
12:41			12:41			
12:42	0.007	0.007	12:42			
12:43	0.006	0.007	12:43	0.05	0.050	-
12:44	0.005	0.006	12:44	0.011	0.031	-
12:45	0.009	0.007	12:45	0.01	0.024	-

PARTICULATE DATA						
Upwind			Downwind			Exceeds Particulate Alarm Limits
Time	Concentration (mg/m <sup>3</sup> )	15-Minute Average	Time	Concentration (mg/m <sup>3</sup> )	15-Minute Average	
12:46	0.004	0.006	12:46	0.01	0.020	-
12:47	0.004	0.006	12:47	0.011	0.018	-
12:48	0.005	0.006	12:48	0.012	0.017	-
12:49	0.006	0.006	12:49	0.01	0.016	-
12:50	0.005	0.006	12:50	0.011	0.016	-
12:51	0.005	0.006	12:51	0.011	0.015	-
12:52	0.004	0.005	12:52	0.013	0.015	-
12:53	0.005	0.005	12:53	0.011	0.015	-
12:54	0.004	0.005	12:54	0.01	0.014	-
12:55	0.004	0.005	12:55	0.011	0.014	-
12:56	0.004	0.005	12:56	0.011	0.014	-
12:57	0.005	0.005	12:57	0.01	0.013	-
12:58	0.006	0.005	12:58	0.015	0.011	-
12:59	0.005	0.005	12:59	0.012	0.011	-
13:00	0.003	0.005	13:00	0.01	0.011	-
13:01	0.004	0.005	13:01	0.01	0.011	-
13:02	0.004	0.005	13:02	0.011	0.011	-
13:03	0.004	0.005	13:03	0.01	0.011	-
13:04	0.005	0.004	13:04	0.01	0.011	-
13:05	0.004	0.004	13:05	0.012	0.011	-
13:06	0.005	0.004	13:06	0.01	0.011	-
13:07	0.005	0.004	13:07	0.009	0.011	-
13:08	0.005	0.004	13:08	0.009	0.011	-
13:09	0.006	0.005	13:09	0.012	0.011	-
13:10	0.005	0.005	13:10	0.01	0.011	-
13:11	0.004	0.005	13:11	0.01	0.011	-
13:12	0.003	0.005	13:12	0.011	0.011	-
13:13	0.003	0.004	13:13	0.012	0.011	-
13:14	0.003	0.004	13:14	0.012	0.011	-
13:15	0.003	0.004	13:15	0.01	0.011	-
13:16	0.003	0.004	13:16	0.008	0.010	-
13:17	0.005	0.004	13:17	0.01	0.010	-
13:18	0.005	0.004	13:18	0.011	0.010	-
13:19	0.005	0.004	13:19	0.007	0.010	-
13:20	0.006	0.004	13:20	0.01	0.010	-
13:21	0.004	0.004	13:21	0.009	0.010	-
13:22	0.005	0.004	13:22	0.011	0.010	-
13:23	0.002	0.004	13:23	0.01	0.010	-
13:24	0.004	0.004	13:24	0.023	0.011	-
13:25	0.011	0.004	13:25	0.01	0.011	-
13:26	0.005	0.005	13:26	0.007	0.011	-
13:27	0.004	0.005	13:27	0.008	0.011	-
13:28	0.003	0.005	13:28	0.008	0.010	-
13:29	0.003	0.005	13:29	0.006	0.010	-
13:30	0.003	0.005	13:30	0.008	0.010	-
13:31	0.003	0.005	13:31	0.008	0.010	-
13:32	0.003	0.004	13:32	0.007	0.010	-
13:33	0.003	0.004	13:33	0.007	0.009	-
13:34	0.002	0.004	13:34	0.008	0.009	-
13:35	0.002	0.004	13:35	0.007	0.009	-
13:36	0.004	0.004	13:36	0.006	0.009	-
13:37	0.005	0.004	13:37	0.007	0.009	-
13:38	0.005	0.004	13:38	0.006	0.008	-
13:39	0.005	0.004	13:39	0.006	0.007	-
13:40	0.006	0.004	13:40	0.007	0.007	-
13:41	0.005	0.004	13:41	0.006	0.007	-
13:42	0.004	0.004	13:42	0.007	0.007	-
13:43	0.003	0.004	13:43	0.006	0.007	-
13:44	0.003	0.004	13:44	0.006	0.007	-
13:45	0.003	0.004	13:45	0.005	0.007	-
13:46	0.003	0.004	13:46	0.006	0.006	-
13:47	0.003	0.004	13:47	0.006	0.006	-
13:48	0.005	0.004	13:48	0.006	0.006	-
13:49	0.005	0.004	13:49	0.006	0.006	-
13:50	0.005	0.004	13:50	0.006	0.006	-
13:51	0.006	0.004	13:51	0.005	0.006	-
13:52	0.004	0.004	13:52	0.009	0.006	-
13:53	0.005	0.004	13:53	0.006	0.006	-
13:54	0.003	0.004	13:54	0.006	0.006	-
13:55	0.004	0.004	13:55	0.006	0.006	-
13:56	0.011	0.004	13:56	0.006	0.006	-
13:57	0.005	0.005	13:57	0.006	0.006	-
13:58	0.004	0.005	13:58	0.005	0.006	-
13:59	0.003	0.005	13:59	0.007	0.006	-
14:00	0.003	0.005	14:00	0.006	0.006	-
14:01	0.003	0.005	14:01	0.006	0.006	-
14:02	0.003	0.005	14:02	0.005	0.006	-
14:03	0.005	0.005	14:03	0.005	0.006	-
14:04	0.006	0.005	14:04	0.005	0.006	-

PARTICULATE DATA						
Upwind			Downwind			Exceeds Particulate Alarm Limits
Time	Concentration (mg/m <sup>3</sup> )	15-Minute Average	Time	Concentration (mg/m <sup>3</sup> )	15-Minute Average	
14:05	0.006	0.005	14:05	0.005	0.006	-
14:06	0.006	0.005	14:06	0.006	0.006	-
14:07	0.006	0.005	14:07	0.006	0.006	-
14:08	0.006	0.005	14:08	0.005	0.006	-
14:09	0.005	0.005	14:09	0.005	0.006	-
14:10			14:10	0.006	0.006	
14:11			14:11	0.005	0.006	
14:12			14:12	0.004	0.005	
14:13			14:13	0.004	0.005	
14:14			14:14	0.01	0.006	

Monday, June 8, 2026						
Number of Instances Where Downwind VOCs Exceeds Upwind VOCs + 5 =						0
Number of Comparable Data Points =						343
Start Time:						7:35
End Time:						13:47
PID DATA						
Upwind			Downwind			Exceeds VOCs Alarm Limits
Time	VOC (ppm)	15-Minute Average	Time	VOC (ppm)	15-Minute Average	
7:35	0		7:35			
7:36	0		7:36	0		
7:37	0		7:37	0		
7:38	0		7:38	0		
7:39	0		7:39	0		
7:40	0		7:40	0		
7:41	0		7:41	0		
7:42	0		7:42	0		
7:43	0		7:43	0		
7:44	0		7:44	0		
7:45	0		7:45	0		
7:46	0		7:46	0		
7:47	0		7:47	0		
7:48	0		7:48	0		
7:49	0	0.0	7:49	0		
7:50	0	0.0	7:50	0		
7:51	0.1	0.0	7:51	0		
7:52	0.1	0.0	7:52	0		
7:53	0	0.0	7:53	0.1		
7:54	0.1	0.0	7:54	0.1		
7:55	0.1	0.0	7:55	0.1		
7:56	0.1	0.0	7:56	0.1		
7:57	0.1	0.0	7:57	0.1		
7:58	0	0.0	7:58	0.1		
7:59	0	0.0	7:59	0.1	0.1	-
8:00	0	0.0	8:00	0.1	0.1	-
8:01	0.1	0.0	8:01	0.1	0.1	-
8:02	0.1	0.1	8:02	0.1	0.1	-
8:03	0.1	0.1	8:03	0.1	0.1	-
8:04	0.1	0.1	8:04	0.1	0.1	-
8:05	0.1	0.1	8:05	0.1	0.1	-
8:06	0.1	0.1	8:06	0.1	0.1	-
8:07	0	0.1	8:07	0.1	0.1	-
8:08	0	0.1	8:08	0.1	0.1	-
8:09	0	0.1	8:09	0.1	0.1	-
8:10	0	0.1	8:10	0.1	0.1	-
8:11	0	0.0	8:11	0.1	0.1	-
8:12	0	0.0	8:12	0.1	0.1	-
8:13	0	0.0	8:13	0.1	0.1	-
8:14	0	0.0	8:14	0.1	0.1	-
8:15	0.1	0.0	8:15	0.1	0.1	-
8:16	0.1	0.0	8:16	0.1	0.1	-
8:17	0.1	0.0	8:17	0.1	0.1	-
8:18	0.1	0.0	8:18	0.1	0.1	-
8:19	0.1	0.0	8:19	0.1	0.1	-
8:20	0.1	0.0	8:20	0.1	0.1	-
8:21	0.1	0.0	8:21	0.1	0.1	-
8:22	0.1	0.1	8:22	0.1	0.1	-
8:23	0.1	0.1	8:23	0.1	0.1	-
8:24	0.1	0.1	8:24	0.1	0.1	-
8:25	0.1	0.1	8:25	0.1	0.1	-
8:26	0.1	0.1	8:26	0.1	0.1	-
8:27	0.1	0.1	8:27	0.1	0.1	-
8:28	0.1	0.1	8:28	0.1	0.1	-
8:29	0.1	0.1	8:29	0.1	0.1	-
8:30	0.1	0.1	8:30	0.1	0.1	-
8:31	0.1	0.1	8:31	0.1	0.1	-
8:32	0.1	0.1	8:32	0.1	0.1	-
8:33	0.1	0.1	8:33	0.1	0.1	-
8:34	0.1	0.1	8:34	0.1	0.1	-
8:35	0.1	0.1	8:35	0.2	0.1	-
8:36	0.1	0.1	8:36	0.2	0.1	-
8:37	0.1	0.1	8:37	0.2	0.2	-
8:38	0.1	0.1	8:38	0.2	0.2	-
8:39	0.1	0.1	8:39	0.2	0.2	-
8:40	0.1	0.1	8:40	0.2	0.2	-
8:41	0.1	0.1	8:41	0.2	0.2	-
8:42	0.1	0.1	8:42	0.2	0.2	-
8:43	0.1	0.1	8:43	0.2	0.2	-
8:44	0.1	0.1	8:44	0.2	0.2	-
8:45	0.1	0.1	8:45	0.2	0.2	-
8:46	0.1	0.1	8:46	0.2	0.2	-
8:47	0.1	0.1	8:47	0.2	0.2	-
8:48	0.1	0.1	8:48	0.2	0.2	-
8:49	0.1	0.1	8:49	0.2	0.2	-
8:50	0.1	0.1	8:50	0.2	0.2	-
8:51	0.1	0.1	8:51	0.2	0.2	-
8:52	0.1	0.1	8:52	0.2	0.2	-

PID DATA						
Upwind			Downwind			Exceeds VOCs Alarm Limits
Time	VOC (ppm)	15-Minute Average	Time	VOC (ppm)	15-Minute Average	
8:53	0.1	0.1	8:53	0.2	0.2	-
8:54	0.1	0.1	8:54	0.2	0.2	-
8:55	0.1	0.1	8:55	0.2	0.2	-
8:56	0.1	0.1	8:56	0.2	0.2	-
8:57	0.1	0.1	8:57	0.2	0.2	-
8:58	0.1	0.1	8:58	0.2	0.2	-
8:59	0.1	0.1	8:59	0.2	0.2	-
9:00	0.1	0.1	9:00	0.2	0.2	-
9:01	0.1	0.1	9:01	0.2	0.2	-
9:02	0.1	0.1	9:02	0.2	0.2	-
9:03	0.1	0.1	9:03	0.2	0.2	-
9:04	0.1	0.1	9:04	0.2	0.2	-
9:05	0.2	0.1	9:05	0.2	0.2	-
9:06	0.3	0.1	9:06	0.2	0.2	-
9:07	0.4	0.1	9:07	0.2	0.2	-
9:08	0.4	0.2	9:08	0.2	0.2	-
9:09	0.4	0.2	9:09	0.2	0.2	-
9:10	0.4	0.2	9:10	0.2	0.2	-
9:11	0.4	0.2	9:11	0.2	0.2	-
9:12	0.4	0.2	9:12	0.2	0.2	-
9:13	0.4	0.3	9:13	0.2	0.2	-
9:14	0.4	0.3	9:14	0.2	0.2	-
9:15	0.4	0.3	9:15	0.2	0.2	-
9:16	0.4	0.3	9:16	0.2	0.2	-
9:17	0.4	0.3	9:17	0.2	0.2	-
9:18	0.4	0.4	9:18	0.2	0.2	-
9:19	0.4	0.4	9:19	0.2	0.2	-
9:20	0.4	0.4	9:20	0.2	0.2	-
9:21	0.4	0.4	9:21	0.2	0.2	-
9:22	0.4	0.4	9:22	0.2	0.2	-
9:23	0.4	0.4	9:23	0.2	0.2	-
9:24	0.4	0.4	9:24	0.2	0.2	-
9:25	0.4	0.4	9:25	0.2	0.2	-
9:26	0.4	0.4	9:26	0.2	0.2	-
9:27	0.4	0.4	9:27	0.2	0.2	-
9:28	0.4	0.4	9:28	0.2	0.2	-
9:29	0.4	0.4	9:29	0.2	0.2	-
9:30	0.4	0.4	9:30	0.2	0.2	-
9:31	0.4	0.4	9:31	0.2	0.2	-
9:32	0.4	0.4	9:32	0.2	0.2	-
9:33	0.4	0.4	9:33	0.2	0.2	-
9:34	0.4	0.4	9:34	0.2	0.2	-
9:35	0.4	0.4	9:35	0.2	0.2	-
9:36	0.4	0.4	9:36	0.2	0.2	-
9:37	0.4	0.4	9:37	0.2	0.2	-
9:38	0.4	0.4	9:38	0.2	0.2	-
9:39	0.4	0.4	9:39	0.2	0.2	-
9:40	0.4	0.4	9:40	0.2	0.2	-
9:41	0.4	0.4	9:41	0.2	0.2	-
9:42	0.4	0.4	9:42	0.2	0.2	-
9:43	0.4	0.4	9:43	0.2	0.2	-
9:44	0.4	0.4	9:44	0.2	0.2	-
9:45	0.4	0.4	9:45	0.2	0.2	-
9:46	0.4	0.4	9:46	0.2	0.2	-
9:47	0.4	0.4	9:47	0.2	0.2	-
9:48	0.4	0.4	9:48	0.2	0.2	-
9:49	0.4	0.4	9:49	0.2	0.2	-
9:50	0.4	0.4	9:50	0.2	0.2	-
9:51	0.4	0.4	9:51	0.2	0.2	-
9:52	0.5	0.4	9:52	0.2	0.2	-
9:53	0.4	0.4	9:53	0.2	0.2	-
9:54	0.4	0.4	9:54	0.2	0.2	-
9:55	0.4	0.4	9:55	0.2	0.2	-
9:56	0.4	0.4	9:56	0.2	0.2	-
9:57	0.4	0.4	9:57	0.2	0.2	-
9:58	0.4	0.4	9:58	0.2	0.2	-
9:59	0.4	0.4	9:59	0.2	0.2	-
10:00	0.4	0.4	10:00	0.2	0.2	-
10:01	0.4	0.4	10:01	0.2	0.2	-
10:02	0.4	0.4	10:02	0.2	0.2	-
10:03	0.4	0.4	10:03	0.2	0.2	-
10:04	0.4	0.4	10:04	0.2	0.2	-
10:05	0.4	0.4	10:05	0.2	0.2	-
10:06	0.4	0.4	10:06	0.2	0.2	-
10:07	0.4	0.4	10:07	0.2	0.2	-
10:08	0.4	0.4	10:08	0.2	0.2	-
10:09	0.4	0.4	10:09	0.2	0.2	-
10:10	0.4	0.4	10:10	0.2	0.2	-
10:11	0.4	0.4	10:11	0.2	0.2	-
10:12	0.4	0.4	10:12	0.2	0.2	-
10:13	0.4	0.4	10:13	0.2	0.2	-
10:14	0.4	0.4	10:14	0.2	0.2	-
10:15	0.4	0.4	10:15	0.2	0.2	-
10:16	0.4	0.4	10:16	0.2	0.2	-

PID DATA						
Upwind			Downwind			Exceeds VOCs Alarm Limits
Time	VOC (ppm)	15-Minute Average	Time	VOC (ppm)	15-Minute Average	
10:17	0.4	0.4	10:17	0.2	0.2	-
10:18	0.4	0.4	10:18	0.2	0.2	-
10:19	0.4	0.4	10:19	0.2	0.2	-
10:20	0.4	0.4	10:20	0.2	0.2	-
10:21	0.5	0.4	10:21	0.2	0.2	-
10:22	0.5	0.4	10:22	0.2	0.2	-
10:23	0.4	0.4	10:23	0.2	0.2	-
10:24	0.4	0.4	10:24	0.2	0.2	-
10:25	0.4	0.4	10:25	0.2	0.2	-
10:26	0.4	0.4	10:26	0.2	0.2	-
10:27	0.4	0.4	10:27	0.2	0.2	-
10:28	0.4	0.4	10:28	0.2	0.2	-
10:29	0.4	0.4	10:29	0.2	0.2	-
10:30	0.4	0.4	10:30	0.2	0.2	-
10:31	0.4	0.4	10:31	0.2	0.2	-
10:32	0.4	0.4	10:32	0.2	0.2	-
10:33	0.4	0.4	10:33	0.2	0.2	-
10:34	0.4	0.4	10:34	0.2	0.2	-
10:35	0.4	0.4	10:35	0.2	0.2	-
10:36	0.4	0.4	10:36	0.2	0.2	-
10:37	0.4	0.4	10:37	0.2	0.2	-
10:38	0.4	0.4	10:38	0.2	0.2	-
10:39	0.4	0.4	10:39	0.2	0.2	-
10:40	0.4	0.4	10:40	0.2	0.2	-
10:41	0.4	0.4	10:41	0.2	0.2	-
10:42	0.4	0.4	10:42	0.2	0.2	-
10:43	0.4	0.4	10:43	0.2	0.2	-
10:44	0.4	0.4	10:44	0.2	0.2	-
10:45	0.4	0.4	10:45	0.2	0.2	-
10:46	0.4	0.4	10:46	0.2	0.2	-
10:47	0.4	0.4	10:47	0.2	0.2	-
10:48	0.4	0.4	10:48	0.2	0.2	-
10:49	0.4	0.4	10:49	0.2	0.2	-
10:50	0.4	0.4	10:50	0.2	0.2	-
10:51	0.4	0.4	10:51	0.2	0.2	-
10:52	0.4	0.4	10:52	0.2	0.2	-
10:53	0.4	0.4	10:53	0.2	0.2	-
10:54	0.4	0.4	10:54	0.2	0.2	-
10:55	0.4	0.4	10:55	0.2	0.2	-
10:56	0.4	0.4	10:56	0.2	0.2	-
10:57	0.4	0.4	10:57	0.2	0.2	-
10:58	0.4	0.4	10:58	0.2	0.2	-
10:59	0.4	0.4	10:59	0.2	0.2	-
11:00	0.4	0.4	11:00	0.2	0.2	-
11:01	0.4	0.4	11:01	0.2	0.2	-
11:02	0.4	0.4	11:02	0.2	0.2	-
11:03	0.4	0.4	11:03	0.2	0.2	-
11:04	0.4	0.4	11:04	0.2	0.2	-
11:05	0.4	0.4	11:05	0.2	0.2	-
11:06	0.4	0.4	11:06	0.2	0.2	-
11:07	0.4	0.4	11:07	0.2	0.2	-
11:08	0.4	0.4	11:08	0.2	0.2	-
11:09	0.4	0.4	11:09	0.2	0.2	-
11:10	0.4	0.4	11:10	0.2	0.2	-
11:11	0.4	0.4	11:11	0.2	0.2	-
11:12	0.4	0.4	11:12	0.2	0.2	-
11:13	0.4	0.4	11:13	0.2	0.2	-
11:14	0.4	0.4	11:14	0.2	0.2	-
11:15	0.4	0.4	11:15	0.2	0.2	-
11:16	0.4	0.4	11:16	0.2	0.2	-
11:17	0.4	0.4	11:17	0.2	0.2	-
11:18	0.4	0.4	11:18	0.2	0.2	-
11:19	0.4	0.4	11:19	0.2	0.2	-
11:20	0.4	0.4	11:20	0.2	0.2	-
11:21	0.4	0.4	11:21	0.1	0.2	-
11:22	0.4	0.4	11:22	0.1	0.2	-
11:23	0.4	0.4	11:23	0.1	0.2	-
11:24	0.4	0.4	11:24	0.2	0.1	-
11:25	0.4	0.4	11:25	0.1	0.1	-
11:26	0.4	0.4	11:26	0.1	0.1	-
11:27	0.4	0.4	11:27	0.1	0.1	-
11:28	0.4	0.4	11:28	0.1	0.1	-
11:29	0.4	0.4	11:29	0.1	0.1	-
11:30	0.4	0.4	11:30	0.1	0.1	-
11:31	0.4	0.4	11:31	0.1	0.1	-
11:32	0.4	0.4	11:32	0.1	0.1	-
11:33	0.4	0.4	11:33	0.1	0.1	-
11:34	0.4	0.4	11:34	0.1	0.1	-
11:35	0.4	0.4	11:35	0.1	0.1	-
11:36	0.4	0.4	11:36	0.1	0.1	-
11:37	0.4	0.4	11:37	0.1	0.1	-
11:38	0.4	0.4	11:38	0.1	0.1	-
11:39	0.4	0.4	11:39	0.1	0.1	-
11:40	0.4	0.4	11:40	0.1	0.1	-

PID DATA						
Upwind			Downwind			Exceeds VOCs Alarm Limits
Time	VOC (ppm)	15-Minute Average	Time	VOC (ppm)	15-Minute Average	
11:41	0.4	0.4	11:41	0.1	0.1	-
11:42	0.4	0.4	11:42	0.1	0.1	-
11:43	0.4	0.4	11:43	0.1	0.1	-
11:44	0.4	0.4	11:44	0.1	0.1	-
11:45	0.4	0.4	11:45	0.1	0.1	-
11:46	0.4	0.4	11:46	0.1	0.1	-
11:47	0.4	0.4	11:47	0.1	0.1	-
11:48	0.4	0.4	11:48	0.1	0.1	-
11:49	0.4	0.4	11:49	0.1	0.1	-
11:50	0.4	0.4	11:50	0.1	0.1	-
11:51	0.4	0.4	11:51	0.1	0.1	-
11:52	0.4	0.4	11:52	0.1	0.1	-
11:53	0.4	0.4	11:53	0.1	0.1	-
11:54	0.4	0.4	11:54	0.1	0.1	-
11:55	0.4	0.4	11:55	0.1	0.1	-
11:56	0.4	0.4	11:56	0.1	0.1	-
11:57	0.4	0.4	11:57	0.1	0.1	-
11:58	0.4	0.4	11:58	0.1	0.1	-
11:59	0.4	0.4	11:59	0.1	0.1	-
12:00	0.4	0.4	12:00	0.1	0.1	-
12:01	0.4	0.4	12:01	0.1	0.1	-
12:02	0.4	0.4	12:02	0.1	0.1	-
12:03	0.4	0.4	12:03	0.1	0.1	-
12:04	0.4	0.4	12:04	0.1	0.1	-
12:05	0.4	0.4	12:05	0.2	0.1	-
12:06	0.4	0.4	12:06	0.1	0.1	-
12:07	0.4	0.4	12:07	0.1	0.1	-
12:08	0.4	0.4	12:08	0.1	0.1	-
12:09	0.4	0.4	12:09	0.1	0.1	-
12:10	0.4	0.4	12:10	0.1	0.1	-
12:11	0.4	0.4	12:11	0.1	0.1	-
12:12	0.4	0.4	12:12	0.1	0.1	-
12:13	0.4	0.4	12:13	0.1	0.1	-
12:14	0.4	0.4	12:14	0.1	0.1	-
12:15	0.4	0.4	12:15	0.1	0.1	-
12:16	0.4	0.4	12:16	0.1	0.1	-
12:17	0.4	0.4	12:17	0.1	0.1	-
12:18	0.4	0.4	12:18	0.1	0.1	-
12:19	0.4	0.4	12:19	0.1	0.1	-
12:20	0.4	0.4	12:20	0.1	0.1	-
12:21	0.4	0.4	12:21	0.1	0.1	-
12:22	0.4	0.4	12:22	0.1	0.1	-
12:23	0.4	0.4	12:23	0.1	0.1	-
12:24	0.4	0.4	12:24	0.1	0.1	-
12:25	0.4	0.4	12:25	0.1	0.1	-
12:26	0.4	0.4	12:26	0.1	0.1	-
12:27	0.4	0.4	12:27	0.1	0.1	-
12:28	0.4	0.4	12:28	0.1	0.1	-
12:29	0.4	0.4	12:29	0.1	0.1	-
12:30	0.4	0.4	12:30	0.1	0.1	-
12:31	0.4	0.4	12:31	0.1	0.1	-
12:32	0.4	0.4	12:32	0.1	0.1	-
12:33	0.4	0.4	12:33	0.1	0.1	-
12:34	0.4	0.4	12:34	0.1	0.1	-
12:35	0.4	0.4	12:35	0.1	0.1	-
12:36	0.4	0.4	12:36	0.1	0.1	-
12:37	0.4	0.4	12:37	0.1	0.1	-
12:38	0.4	0.4	12:38	0.1	0.1	-
12:39	0.4	0.4	12:39	0.1	0.1	-
12:40	0.4	0.4	12:40	0.1	0.1	-
12:41	0.4	0.4	12:41	0.1	0.1	-
12:42	0.4	0.4	12:42	0.1	0.1	-
12:43	0.4	0.4	12:43	0.1	0.1	-
12:44	0.4	0.4	12:44	0.1	0.1	-
12:45	0.4	0.4	12:45	0.1	0.1	-
12:46	0.4	0.4	12:46	0.1	0.1	-
12:47	0.4	0.4	12:47	0.1	0.1	-
12:48	0.4	0.4	12:48	0.1	0.1	-
12:49	0.4	0.4	12:49	0.1	0.1	-
12:50	0.4	0.4	12:50	0.1	0.1	-
12:51	0.4	0.4	12:51	0.1	0.1	-
12:52	0.4	0.4	12:52	0.1	0.1	-
12:53	0.4	0.4	12:53	0.1	0.1	-
12:54	0.4	0.4	12:54	0.1	0.1	-
12:55	0.4	0.4	12:55	0.1	0.1	-
12:56	0.4	0.4	12:56	0.1	0.1	-

PID DATA						
Upwind			Downwind			Exceeds VOCs Alarm Limits
Time	VOC (ppm)	15-Minute Average	Time	VOC (ppm)	15-Minute Average	
12:57	0.4	0.4	12:57	0.1	0.1	-
12:58	0.4	0.4	12:58	0.1	0.1	-
12:59	0.4	0.4	12:59	0.1	0.1	-
13:00	0.4	0.4	13:00	0.1	0.1	-
13:01	0.4	0.4	13:01	0.1	0.1	-
13:02	0.4	0.4	13:02	0.1	0.1	-
13:03	0.4	0.4	13:03	0.1	0.1	-
13:04	0.4	0.4	13:04	0.1	0.1	-
13:05	0.4	0.4	13:05	0.1	0.1	-
13:06	0.4	0.4	13:06	0.1	0.1	-
13:07	0.4	0.4	13:07	0.1	0.1	-
13:08	0.4	0.4	13:08	0.1	0.1	-
13:09	0.4	0.4	13:09	0.1	0.1	-
13:10	0.4	0.4	13:10	0.1	0.1	-
13:11	0.4	0.4	13:11	0.1	0.1	-
13:12	0.4	0.4	13:12	0.1	0.1	-
13:13	0.4	0.4	13:13	0.1	0.1	-
13:14	0.4	0.4	13:14	0.1	0.1	-
13:15	0.4	0.4	13:15	0.1	0.1	-
13:16	0.4	0.4	13:16	0.1	0.1	-
13:17	0.4	0.4	13:17	0.1	0.1	-
13:18	0.4	0.4	13:18	0.1	0.1	-
13:19	0.4	0.4	13:19	0.1	0.1	-
13:20	0.4	0.4	13:20	0.1	0.1	-
13:21	0.4	0.4	13:21	0.1	0.1	-
13:22	0.4	0.4	13:22	0.1	0.1	-
13:23	0.4	0.4	13:23	0.1	0.1	-
13:24	0.4	0.4	13:24	0.1	0.1	-
13:25	0.4	0.4	13:25	0.1	0.1	-
13:26	0.4	0.4	13:26	0.1	0.1	-
13:27	0.4	0.4	13:27	0.1	0.1	-
13:28	0.4	0.4	13:28	0.1	0.1	-
13:29	0.4	0.4	13:29	0.1	0.1	-
13:30	0.4	0.4	13:30	0.1	0.1	-
13:31	0.4	0.4	13:31	0.1	0.1	-
13:32	0.4	0.4	13:32	0.1	0.1	-
13:33	0.4	0.4	13:33	0.1	0.1	-
13:34	0.4	0.4	13:34	0.1	0.1	-
13:35	0.4	0.4	13:35	0.1	0.1	-
13:36	0.4	0.4	13:36	0.1	0.1	-
13:37	0.4	0.4	13:37	0.1	0.1	-
13:38	0.4	0.4	13:38	0.1	0.1	-
13:39	0.4	0.4	13:39	0.1	0.1	-
13:40	0.4	0.4	13:40	0.1	0.1	-
13:41	0.4	0.4	13:41	0.1	0.1	-
13:42			13:42	0.1	0.1	
13:43			13:43	0.1	0.1	
13:44			13:44	0.1	0.1	
13:45			13:45	0.1	0.1	
13:46			13:46	0.1	0.1	
13:47			13:47	0.1	0.1	