

## DAILY OBSERVATION REPORT

# LANGAN

<b>PROJECT No.:</b> 170824801  <b>PROJECT:</b> 172 Montrose Avenue  <b>LOCATION:</b> Brooklyn, New York  <b>BCP SITE NUMBER:</b> C224417	<b>CLIENT:</b>  Montrose Meserole Owner LLC	<b>DATE:</b> Tuesday, June 9, 2026  <b>WEATHER:</b> Sunny, 72-89 °F Wind: SSW @ 5-13 mph  <b>TIME:</b> 6:30 – 14:00  <b>MONITOR:</b> Aron Farber	
<b>EQUIPMENT:</b> Geoprobe 7822DT Drill Rig Hand Tools Interface Probe Community Air Monitoring Plan Stations Handheld Photoionization Detector	<b>PRESENT AT SITE:</b> <b>Environmental Staff (Langan):</b> Aron Farber <b>Environmental Drilling Contractor (EPhase 2):</b> Luke Reiss, Sam Yanuck		
<p><b>OBSERVATIONS, DISCUSSIONS, TEST RESULTS, ETC.:</b> Langan was present to perform work in accordance with the New York State Department of Environmental Conservation (NYSDEC)-approved Treatability Study Work Plan (TSWP) and the waste characterization for Brownfield Cleanup Program (BCP) Site No. C224417 at 172 Montrose Avenue (Block 3062, Lot 12). Observed activities were as follows:</p> <p><b>Site Activities</b></p> <ul style="list-style-type: none"> <li>• EPhase 2 advanced a soil boring to about 37 feet below grade surface (bgs) to install monitoring well MW07 for baseline groundwater sampling. Langan documented the work, logged the soil boring, and screened the recovered soil/fill for odors, staining, and organic vapors using a photoionization detector (PID). Petroleum-like odors and a maximum PID reading of 15,000 parts per million (ppm) were observed from 17 to 37 feet bgs; gray staining was observed from 26 to 37 feet bgs. Groundwater was encountered at about 29.5 feet bgs.           <ul style="list-style-type: none"> <li>○ A two-inch-diameter groundwater monitoring well (MW07) was installed in the borehole consisting of ten feet of prepacked 0.01-inch slotted polyvinyl chloride (PVC) screen from about 35 feet to 25 feet bgs, and PVC riser from about 25 bgs to grade surface.</li> <li>○ Monitoring well MW07 was developed using a submersible pump. Approximately 3 gallons of purged groundwater were containerized in a 55-gallon steel drum in the northern part of the site pending future off-site disposal.</li> </ul> </li> <li>• EPhase 2 advanced a soil boring to about 35 feet bgs for Langan to collect soil sample TS01 as part of the TSWP. Langan documented the work, logged the soil boring, and screened the recovered soil/fill for odors, staining, and organic vapors using a photoionization detector. No evidence of impacts was observed.</li> </ul>			
<b>Cc:</b>	C. Devin, S.Fernholz, K. Semon, B. Gochenaur (Langan)	<b>By:</b>	Aron Farber  <b>LANGAN</b>

**Sampling**

- Langan collected soil sample TS01 as part of the TSWP. The TSWP groundwater sample (collected on June 8, 2026) and the soil sample from TS01 were relinquished to the New Jersey Institute of Technology (NJIT) laboratory for the treatability study.

**Community Air Monitoring Plan (CAMP) Activities**

- Langan set up CAMP stations at the upwind and downwind site perimeters to monitor VOCs and particulate matter less than 10 micrometers ( $\mu\text{m}$ ) in diameter (PM10) during intrusive activity. PM10 and VOC concentrations did not exceed the action levels established in the site CAMP. Fugitive dust or odors associated with intrusive activities were not observed.

**Anticipated Activities**

- EPhase 2 will continue groundwater monitoring well installation and begin soil vapor extraction (SVE) pilot well installation.

Cc:	C. Devin, K. Semon, B. Gochenaur (Langan)	By:	Aron Farber <b>LANGAN</b>
-----	---	-----	------------------------------

**Site Photographs:**



**Photo 1:** View of EPhase 2 advancing soil boring/monitoring well MW07 on the Montrose Avenue sidewalk (facing west).



**Photo 2:** View of collected groundwater treatability soil sample TS01 (facing down).

Cc:	C. Devin, K. Semon, B. Gochenaur (Langan)	By:	Aron Farber <b>LANGAN</b>
-----	---	-----	------------------------------

**Figure 1: Monitoring Well Location Map**



**Legend**

- Approximate Site Boundary
- Tax Block
- Tax Parcel

- Waste Characterization Boring
- Lead Delineation Boring
- SVE well boring
- GW Treatability boring

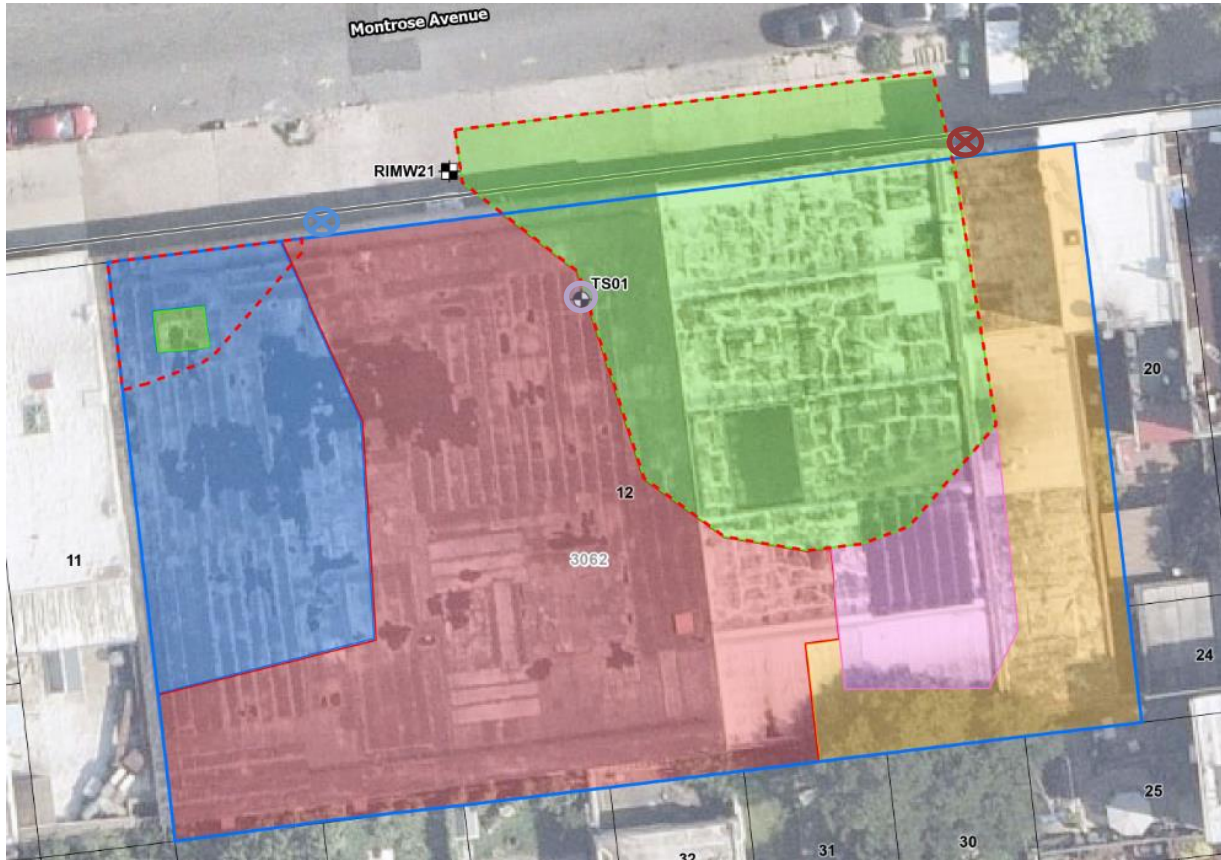
- Monitoring Well Boring Advanced and Installed
- Monitoring Well Sampled
- X Upwind CAMP Station
- X Downwind CAMP Station
- ↑ Wind Direction
- Drum Staging Area

Cc: C. Devin, K. Semon, B. Gochenaur (Langan)

By: Aron Farber

**LANGAN**

**Figure 2: TSWP Boring Location Map**



**Legend**

- Proposed Groundwater Treatability Soil Boring Location
- Proposed Groundwater Treatability Groundwater Sample Location
- Approximate Site Boundary
- Tax Block
- Tax Parcel
- Excavation to about 2 feet bgs
- Excavation to about 4 feet bgs
- Excavation to about 10 feet bgs
- Excavation to about 12 feet bgs
- Excavation to about 15 to 17 feet bgs
- Approximate Groundwater Treatment Extent
- Soil Boring Advanced Today
- Upwind CAMP Station
- Downwind CAMP Station
- Wind Direction
- Drum Staging Area
- Monitoring Well Sampled Today

Cc:	C. Devin, K. Semon, B. Gochenaur (Langan)	By:	Aron Farber <b>LANGAN</b>
-----	---	-----	------------------------------

Date: Tuesday, June 9, 2026

Start: 7:13

End: 13:28

Observer: Aron Farber

**UPWIND - UW**  
**DOWNWIND - DW**

Particulate Monitoring		
	UW	DW
Daily Average	0.007	0.009
Minimum 15min Average	0.003	0.006
Maximum 15min Average	0.028	0.014
High Intervals "exceedances" (15min > 1.5 + Upwind level)	NA	0.0
Minimum 1min Reading	0.002	0.005
Maximum 1min Reading	0.124	0.047

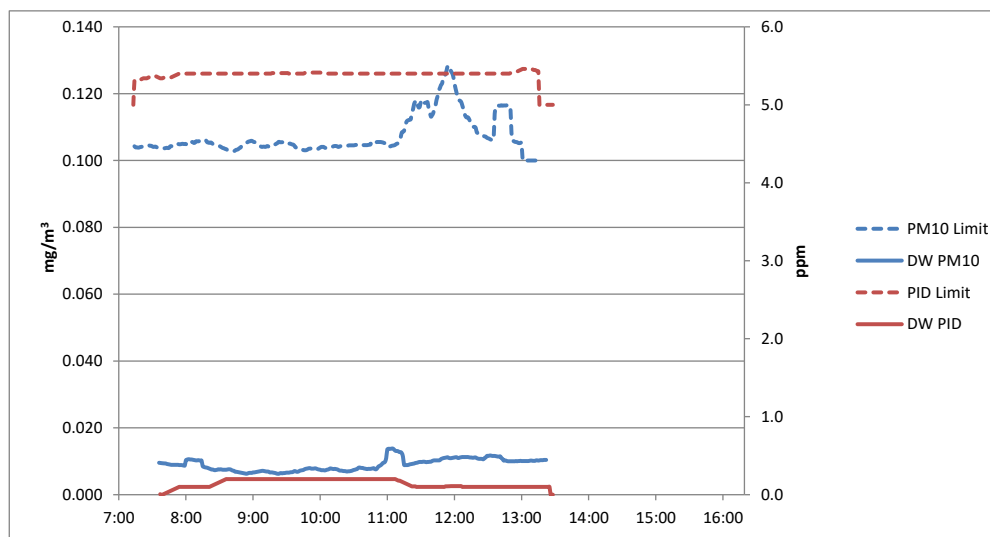
NA - Not applicable, upwind unit used for background concentrations

All reported units are mg/m<sup>3</sup> or milligrams per cubic meter unless specified otherwise

Organic Vapor Monitoring		
	UW	DW
Daily Average	0.4	0.1
Minimum 15min Average	0.3	0.0
Maximum 15min Average	0.5	0.2
High Intervals "exceedances" (15min > 5 + Upwind level)	NA	0.0
Minimum 1min Reading	0.3	0.0
Maximum 1min Reading	0.5	0.2

NA - Not applicable, upwind unit used for background concentrations

All reported units are ppm or parts per million unless specified otherwise



Tuesday, June 9, 2026						
Number of Instances Where Downwind Particulates Exceeds Upwind Particulate + 150 =						0
Number of Comparable Data Points =						339
Start Time:						7:14
End Time:						13:22
PARTICULATE DATA						
Upwind			Downwind			Exceeds Particulate Alarm Limits
Time	Concentration (mg/m <sup>3</sup> )	15-Minute Average	Time	Concentration (mg/m <sup>3</sup> )	15-Minute Average	
7:14	0.011		7:14			
7:15	0.004		7:15			
7:16	0.005		7:16			
7:17	0.004		7:17			
7:18	0.004		7:18			
7:19	0.004		7:19			
7:20	0.004		7:20			
7:21	0.003		7:21			
7:22	0.003		7:22			
7:23	0.003		7:23			
7:24	0.003		7:24			
7:25	0.003		7:25			
7:26	0.003		7:26			
7:27	0.005		7:27			
7:28	0.005	0.004	7:28	0.011		
7:29	0.006	0.004	7:29	0.01		
7:30	0.004	0.004	7:30	0.01		
7:31	0.004	0.004	7:31	0.009		
7:32	0.004	0.004	7:32	0.009		
7:33	0.006	0.004	7:33	0.009		
7:34	0.005	0.004	7:34	0.009		
7:35	0.005	0.004	7:35	0.009		
7:36	0.004	0.004	7:36	0.01	0.010	-
7:37	0.004	0.004	7:37	0.009	0.010	-
7:38	0.006	0.004	7:38	0.009	0.009	-
7:39	0.003	0.004	7:39	0.009	0.009	-
7:40	0.004	0.005	7:40	0.009	0.009	-
7:41	0.003	0.005	7:41	0.009	0.009	-
7:42	0.003	0.004	7:42	0.009	0.009	-
7:43	0.005	0.004	7:43	0.009	0.009	-
7:44	0.003	0.004	7:44	0.009	0.009	-
7:45	0.002	0.004	7:45	0.009	0.009	-
7:46	0.005	0.004	7:46	0.008	0.009	-
7:47	0.004	0.004	7:47	0.008	0.009	-
7:48	0.003	0.004	7:48	0.009	0.009	-
7:49	0.005	0.004	7:49	0.009	0.009	-
7:50	0.004	0.004	7:50	0.009	0.009	-
7:51	0.003	0.004	7:51	0.01	0.009	-
7:52	0.003	0.004	7:52	0.009	0.009	-
7:53	0.004	0.004	7:53	0.009	0.009	-
7:54	0.004	0.004	7:54	0.008	0.009	-
7:55	0.004	0.004	7:55	0.009	0.009	-
7:56	0.004	0.004	7:56	0.009	0.009	-
7:57	0.004	0.004	7:57	0.008	0.009	-
7:58	0.004	0.004	7:58	0.008	0.009	-
7:59	0.004	0.004	7:59	0.009	0.009	-
8:00	0.009	0.004	8:00	0.033	0.010	-
8:01	0.005	0.004	8:01	0.01	0.010	-
8:02	0.006	0.004	8:02	0.01	0.011	-
8:03	0.004	0.004	8:03	0.009	0.011	-
8:04	0.003	0.004	8:04	0.008	0.011	-
8:05	0.005	0.004	8:05	0.009	0.011	-
8:06	0.009	0.005	8:06	0.009	0.010	-
8:07	0.005	0.005	8:07	0.008	0.010	-
8:08	0.003	0.005	8:08	0.008	0.010	-
8:09	0.004	0.005	8:09	0.007	0.010	-
8:10	0.005	0.005	8:10	0.009	0.010	-
8:11	0.005	0.005	8:11	0.01	0.010	-
8:12	0.003	0.005	8:12	0.007	0.010	-
8:13	0.004	0.005	8:13	0.007	0.010	-
8:14	0.004	0.005	8:14	0.009	0.010	-
8:15	0.003	0.005	8:15	0.008	0.009	-
8:16	0.006	0.005	8:16	0.007	0.008	-
8:17	0.008	0.005	8:17	0.008	0.008	-
8:18	0.012	0.005	8:18	0.008	0.008	-
8:19	0.006	0.005	8:19	0.007	0.008	-
8:20	0.006	0.006	8:20	0.007	0.008	-
8:21	0.005	0.005	8:21	0.007	0.008	-
8:22	0.006	0.005	8:22	0.006	0.008	-
8:23	0.009	0.006	8:23	0.006	0.008	-
8:24	0.004	0.006	8:24	0.007	0.008	-
8:25	0.005	0.006	8:25	0.007	0.007	-
8:26	0.006	0.006	8:26	0.009	0.007	-
8:27	0.004	0.006	8:27	0.008	0.007	-
8:28	0.004	0.006	8:28	0.008	0.007	-
8:29	0.005	0.006	8:29	0.011	0.008	-
8:30	0.007	0.006	8:30	0.007	0.008	-

PARTICULATE DATA						
Upwind			Downwind			Exceeds Particulate Alarm Limits
Time	Concentration (mg/m <sup>3</sup> )	15-Minute Average	Time	Concentration (mg/m <sup>3</sup> )	15-Minute Average	
8:31	0.006	0.006	8:31	0.008	0.008	-
8:32	0.005	0.006	8:32	0.007	0.008	-
8:33	0.004	0.005	8:33	0.007	0.007	-
8:34	0.005	0.005	8:34	0.007	0.007	-
8:35	0.004	0.005	8:35	0.007	0.007	-
8:36	0.007	0.005	8:36	0.007	0.007	-
8:37	0.004	0.005	8:37	0.007	0.008	-
8:38	0.004	0.005	8:38	0.007	0.008	-
8:39	0.003	0.005	8:39	0.007	0.008	-
8:40	0.004	0.005	8:40	0.006	0.008	-
8:41	0.003	0.005	8:41	0.006	0.007	-
8:42	0.003	0.005	8:42	0.006	0.007	-
8:43	0.003	0.004	8:43	0.007	0.007	-
8:44	0.003	0.004	8:44	0.007	0.007	-
8:45	0.004	0.004	8:45	0.007	0.007	-
8:46	0.003	0.004	8:46	0.007	0.007	-
8:47	0.002	0.004	8:47	0.006	0.007	-
8:48	0.003	0.004	8:48	0.006	0.007	-
8:49	0.002	0.003	8:49	0.006	0.007	-
8:50	0.003	0.003	8:50	0.006	0.007	-
8:51	0.003	0.003	8:51	0.006	0.006	-
8:52	0.003	0.003	8:52	0.006	0.006	-
8:53	0.002	0.003	8:53	0.006	0.006	-
8:54	0.002	0.003	8:54	0.006	0.006	-
8:55	0.003	0.003	8:55	0.007	0.006	-
8:56	0.003	0.003	8:56	0.008	0.006	-
8:57	0.003	0.003	8:57	0.007	0.007	-
8:58	0.006	0.003	8:58	0.007	0.007	-
8:59	0.006	0.003	8:59	0.007	0.007	-
9:00	0.005	0.003	9:00	0.009	0.007	-
9:01	0.006	0.003	9:01	0.007	0.007	-
9:02	0.006	0.004	9:02	0.007	0.007	-
9:03	0.006	0.004	9:03	0.007	0.007	-
9:04	0.01	0.004	9:04	0.007	0.007	-
9:05	0.006	0.005	9:05	0.007	0.007	-
9:06	0.008	0.005	9:06	0.007	0.007	-
9:07	0.006	0.005	9:07	0.007	0.007	-
9:08	0.004	0.005	9:08	0.007	0.007	-
9:09	0.004	0.005	9:09	0.006	0.007	-
9:10	0.006	0.006	9:10	0.006	0.007	-
9:11	0.004	0.006	9:11	0.007	0.007	-
9:12	0.005	0.006	9:12	0.006	0.007	-
9:13	0.006	0.006	9:13	0.007	0.007	-
9:14	0.003	0.006	9:14	0.006	0.007	-
9:15	0.003	0.006	9:15	0.006	0.007	-
9:16	0.004	0.005	9:16	0.007	0.007	-
9:17	0.002	0.005	9:17	0.007	0.007	-
9:18	0.006	0.005	9:18	0.006	0.007	-
9:19	0.004	0.005	9:19	0.006	0.007	-
9:20	0.002	0.004	9:20	0.006	0.006	-
9:21	0.004	0.004	9:21	0.005	0.006	-
9:22	0.004	0.004	9:22	0.006	0.006	-
9:23	0.005	0.004	9:23	0.007	0.006	-
9:24	0.004	0.004	9:24	0.008	0.006	-
9:25	0.005	0.004	9:25	0.007	0.006	-
9:26	0.006	0.004	9:26	0.006	0.006	-
9:27	0.007	0.004	9:27	0.007	0.006	-
9:28	0.003	0.004	9:28	0.007	0.006	-
9:29	0.005	0.004	9:29	0.007	0.007	-
9:30	0.008	0.005	9:30	0.007	0.007	-
9:31	0.007	0.005	9:31	0.007	0.007	-
9:32	0.003	0.005	9:32	0.007	0.007	-
9:33	0.005	0.005	9:33	0.007	0.007	-
9:34	0.005	0.005	9:34	0.007	0.007	-
9:35	0.005	0.005	9:35	0.006	0.007	-
9:36	0.007	0.005	9:36	0.007	0.007	-
9:37	0.009	0.006	9:37	0.009	0.007	-
9:38	0.003	0.005	9:38	0.006	0.007	-
9:39	0.004	0.005	9:39	0.006	0.007	-
9:40	0.005	0.005	9:40	0.007	0.007	-
9:41	0.006	0.005	9:41	0.008	0.007	-
9:42	0.008	0.006	9:42	0.01	0.007	-
9:43	0.005	0.006	9:43	0.008	0.007	-
9:44	0.004	0.006	9:44	0.008	0.007	-
9:45	0.004	0.005	9:45	0.008	0.007	-
9:46	0.003	0.005	9:46	0.01	0.008	-
9:47	0.003	0.005	9:47	0.009	0.008	-
9:48	0.003	0.005	9:48	0.008	0.008	-
9:49	0.003	0.005	9:49	0.008	0.008	-
9:50	0.004	0.005	9:50	0.007	0.008	-
9:51	0.002	0.004	9:51	0.007	0.008	-
9:52	0.002	0.004	9:52	0.007	0.008	-
9:53	0.003	0.004	9:53	0.006	0.008	-
9:54	0.004	0.004	9:54	0.006	0.008	-

PARTICULATE DATA						
Upwind			Downwind			Exceeds Particulate Alarm Limits
Time	Concentration (mg/m <sup>3</sup> )	15-Minute Average	Time	Concentration (mg/m <sup>3</sup> )	15-Minute Average	
9:55	0.004	0.004	9:55	0.008	0.008	-
9:56	0.004	0.004	9:56	0.008	0.008	-
9:57	0.004	0.003	9:57	0.008	0.008	-
9:58	0.002	0.003	9:58	0.006	0.008	-
9:59	0.002	0.003	9:59	0.007	0.008	-
10:00	0.003	0.003	10:00	0.007	0.007	-
10:01	0.003	0.003	10:01	0.008	0.007	-
10:02	0.004	0.003	10:02	0.009	0.007	-
10:03	0.006	0.003	10:03	0.008	0.007	-
10:04	0.006	0.004	10:04	0.007	0.007	-
10:05	0.004	0.004	10:05	0.008	0.007	-
10:06	0.004	0.004	10:06	0.009	0.007	-
10:07	0.003	0.004	10:07	0.008	0.008	-
10:08	0.002	0.004	10:08	0.008	0.008	-
10:09	0.003	0.004	10:09	0.009	0.008	-
10:10	0.003	0.004	10:10	0.007	0.008	-
10:11	0.003	0.003	10:11	0.007	0.008	-
10:12	0.004	0.003	10:12	0.007	0.008	-
10:13	0.005	0.004	10:13	0.007	0.008	-
10:14	0.005	0.004	10:14	0.006	0.008	-
10:15	0.006	0.004	10:15	0.006	0.008	-
10:16	0.003	0.004	10:16	0.006	0.007	-
10:17	0.004	0.004	10:17	0.006	0.007	-
10:18	0.003	0.004	10:18	0.007	0.007	-
10:19	0.004	0.004	10:19	0.007	0.007	-
10:20	0.004	0.004	10:20	0.007	0.007	-
10:21	0.004	0.004	10:21	0.008	0.007	-
10:22	0.005	0.004	10:22	0.008	0.007	-
10:23	0.005	0.004	10:23	0.007	0.007	-
10:24	0.004	0.004	10:24	0.008	0.007	-
10:25	0.003	0.004	10:25	0.008	0.007	-
10:26	0.005	0.004	10:26	0.007	0.007	-
10:27	0.005	0.004	10:27	0.008	0.007	-
10:28	0.005	0.004	10:28	0.008	0.007	-
10:29	0.004	0.004	10:29	0.008	0.007	-
10:30	0.003	0.004	10:30	0.008	0.007	-
10:31	0.004	0.004	10:31	0.007	0.007	-
10:32	0.006	0.004	10:32	0.008	0.008	-
10:33	0.005	0.004	10:33	0.008	0.008	-
10:34	0.005	0.004	10:34	0.012	0.008	-
10:35	0.003	0.004	10:35	0.009	0.008	-
10:36	0.004	0.004	10:36	0.007	0.008	-
10:37	0.005	0.004	10:37	0.007	0.008	-
10:38	0.005	0.004	10:38	0.007	0.008	-
10:39	0.005	0.004	10:39	0.006	0.008	-
10:40	0.004	0.005	10:40	0.007	0.008	-
10:41	0.005	0.005	10:41	0.006	0.008	-
10:42	0.005	0.005	10:42	0.007	0.008	-
10:43	0.005	0.005	10:43	0.009	0.008	-
10:44	0.004	0.005	10:44	0.008	0.008	-
10:45	0.004	0.005	10:45	0.008	0.008	-
10:46	0.005	0.005	10:46	0.008	0.008	-
10:47	0.004	0.005	10:47	0.009	0.008	-
10:48	0.008	0.005	10:48	0.009	0.008	-
10:49	0.003	0.005	10:49	0.008	0.008	-
10:50	0.004	0.005	10:50	0.008	0.008	-
10:51	0.004	0.005	10:51	0.012	0.008	-
10:52	0.005	0.005	10:52	0.014	0.008	-
10:53	0.004	0.005	10:53	0.01	0.009	-
10:54	0.005	0.005	10:54	0.009	0.009	-
10:55	0.004	0.005	10:55	0.011	0.009	-
10:56	0.005	0.005	10:56	0.012	0.009	-
10:57	0.006	0.005	10:57	0.009	0.010	-
10:58	0.006	0.005	10:58	0.013	0.010	-
10:59	0.005	0.005	10:59	0.024	0.011	-
11:00	0.017	0.006	11:00	0.047	0.014	-
11:01	0.006	0.006	11:01	0.011	0.014	-
11:02	0.004	0.006	11:02	0.009	0.014	-
11:03	0.003	0.005	11:03	0.009	0.014	-
11:04	0.004	0.005	11:04	0.009	0.014	-
11:05	0.005	0.006	11:05	0.008	0.014	-
11:06	0.004	0.006	11:06	0.008	0.014	-
11:07	0.005	0.006	11:07	0.009	0.013	-
11:08	0.004	0.006	11:08	0.008	0.013	-
11:09	0.004	0.005	11:09	0.009	0.013	-
11:10	0.003	0.005	11:10	0.009	0.013	-
11:11	0.003	0.005	11:11	0.009	0.013	-
11:12	0.004	0.005	11:12	0.009	0.013	-
11:13	0.004	0.005	11:13	0.008	0.012	-
11:14	0.005	0.005	11:14	0.009	0.011	-
11:15	0.005	0.004	11:15	0.01	0.009	-
11:16	0.006	0.004	11:16	0.01	0.009	-
11:17	0.005	0.004	11:17	0.009	0.009	-
11:18	0.005	0.004	11:18	0.009	0.009	-

PARTICULATE DATA						
Upwind			Downwind			Exceeds Particulate Alarm Limits
Time	Concentration (mg/m <sup>3</sup> )	15-Minute Average	Time	Concentration (mg/m <sup>3</sup> )	15-Minute Average	
11:19	0.005	0.004	11:19	0.01	0.009	-
11:20	0.006	0.005	11:20	0.01	0.009	-
11:21	0.006	0.005	11:21	0.009	0.009	-
11:22	0.009	0.005	11:22	0.01	0.009	-
11:23	0.006	0.005	11:23	0.009	0.009	-
11:24	0.007	0.005	11:24	0.01	0.009	-
11:25	0.009	0.006	11:25	0.011	0.009	-
11:26	0.023	0.007	11:26	0.01	0.010	-
11:27	0.025	0.008	11:27	0.01	0.010	-
11:28	0.007	0.009	11:28	0.01	0.010	-
11:29	0.009	0.009	11:29	0.01	0.010	-
11:30	0.028	0.010	11:30	0.01	0.010	-
11:31	0.022	0.011	11:31	0.01	0.010	-
11:32	0.012	0.012	11:32	0.01	0.010	-
11:33	0.007	0.012	11:33	0.009	0.010	-
11:34	0.007	0.012	11:34	0.009	0.010	-
11:35	0.008	0.012	11:35	0.009	0.010	-
11:36	0.037	0.014	11:36	0.01	0.010	-
11:37	0.023	0.015	11:37	0.01	0.010	-
11:38	0.03	0.017	11:38	0.01	0.010	-
11:39	0.017	0.018	11:39	0.01	0.010	-
11:40	0.015	0.018	11:40	0.014	0.010	-
11:41	0.007	0.017	11:41	0.012	0.010	-
11:42	0.009	0.016	11:42	0.011	0.010	-
11:43	0.01	0.016	11:43	0.01	0.010	-
11:44	0.03	0.017	11:44	0.01	0.010	-
11:45	0.014	0.017	11:45	0.01	0.010	-
11:46	0.024	0.017	11:46	0.01	0.010	-
11:47	0.019	0.017	11:47	0.011	0.010	-
11:48	0.009	0.017	11:48	0.014	0.011	-
11:49	0.008	0.017	11:49	0.011	0.011	-
11:50	0.01	0.017	11:50	0.011	0.011	-
11:51	0.007	0.015	11:51	0.011	0.011	-
11:52	0.008	0.014	11:52	0.011	0.011	-
11:53	0.01	0.013	11:53	0.011	0.011	-
11:54	0.023	0.014	11:54	0.011	0.011	-
11:55	0.024	0.014	11:55	0.011	0.011	-
11:56	0.025	0.015	11:56	0.011	0.011	-
11:57	0.024	0.016	11:57	0.011	0.011	-
11:58	0.037	0.018	11:58	0.011	0.011	-
11:59	0.047	0.019	11:59	0.011	0.011	-
12:00	0.039	0.021	12:00	0.011	0.011	-
12:01	0.035	0.022	12:01	0.011	0.011	-
12:02	0.033	0.023	12:02	0.011	0.011	-
12:03	0.016	0.023	12:03	0.011	0.011	-
12:04	0.031	0.025	12:04	0.011	0.011	-
12:05	0.014	0.025	12:05	0.013	0.011	-
12:06	0.022	0.026	12:06	0.012	0.011	-
12:07	0.024	0.027	12:07	0.012	0.011	-
12:08	0.031	0.028	12:08	0.011	0.011	-
12:09	0.023	0.028	12:09	0.011	0.011	-
12:10	0.015	0.028	12:10	0.011	0.011	-
12:11	0.009	0.027	12:11	0.011	0.011	-
12:12	0.016	0.026	12:12	0.011	0.011	-
12:13	0.021	0.025	12:13	0.01	0.011	-
12:14	0.019	0.023	12:14	0.01	0.011	-
12:15	0.014	0.022	12:15	0.011	0.011	-
12:16	0.014	0.020	12:16	0.01	0.011	-
12:17	0.007	0.018	12:17	0.011	0.011	-
12:18	0.011	0.018	12:18	0.012	0.011	-
12:19	0.028	0.018	12:19	0.011	0.011	-
12:20	0.009	0.018	12:20	0.01	0.011	-
12:21	0.007	0.017	12:21	0.01	0.011	-
12:22	0.006	0.015	12:22	0.011	0.011	-
12:23	0.012	0.014	12:23	0.011	0.011	-
12:24	0.01	0.013	12:24	0.011	0.011	-
12:25	0.01	0.013	12:25	0.01	0.011	-
12:26	0.01	0.013	12:26	0.01	0.011	-

PARTICULATE DATA						
Upwind			Downwind			Exceeds Particulate Alarm Limits
Time	Concentration (mg/m <sup>3</sup> )	15-Minute Average	Time	Concentration (mg/m <sup>3</sup> )	15-Minute Average	
12:27	0.009	0.012	12:27	0.017	0.011	-
12:28	0.009	0.012	12:28	0.012	0.011	-
12:29	0.007	0.011	12:29	0.017	0.012	-
12:30	0.008	0.010	12:30	0.011	0.012	-
12:31	0.008	0.010	12:31	0.011	0.012	-
12:32	0.007	0.010	12:32	0.012	0.012	-
12:33	0.007	0.010	12:33	0.011	0.012	-
12:34	0.007	0.008	12:34	0.01	0.012	-
12:35	0.007	0.008	12:35	0.01	0.012	-
12:36	0.007	0.008	12:36	0.01	0.012	-
12:37	0.006	0.008	12:37	0.01	0.012	-
12:38	0.006	0.008	12:38	0.01	0.011	-
12:39	0.007	0.008	12:39	0.01	0.011	-
12:40	0.006	0.007	12:40	0.01	0.011	-
12:41	0.007	0.007	12:41	0.011	0.011	-
12:42	0.008	0.007	12:42	0.009	0.011	-
12:43	0.004	0.007	12:43	0.009	0.011	-
12:44	0.005	0.007	12:44	0.009	0.010	-
12:45	0.006	0.007	12:45	0.012	0.010	-
12:46	0.005	0.006	12:46	0.01	0.010	-
12:47	0.005	0.006	12:47	0.01	0.010	-
12:48	0.006	0.006	12:48	0.01	0.010	-
12:49	0.008	0.006	12:49	0.01	0.010	-
12:50	0.124	0.014	12:50	0.01	0.010	-
12:51	0.039	0.016	12:51	0.01	0.010	-
12:52	0.009	0.016	12:52	0.01	0.010	-
12:53	0.008	0.016	12:53	0.01	0.010	-
12:54	0.006	0.016	12:54	0.01	0.010	-
12:55	0.006	0.016	12:55	0.011	0.010	-
12:56	0.009	0.017	12:56	0.01	0.010	-
12:57	0.006	0.016	12:57	0.01	0.010	-
12:58	0.005	0.016	12:58	0.009	0.010	-
12:59	0.005	0.016	12:59	0.01	0.010	-
13:00	0.006	0.016	13:00	0.011	0.010	-
13:01	0.006	0.017	13:01	0.01	0.010	-
13:02	0.004	0.016	13:02	0.01	0.010	-
13:03	0.005	0.016	13:03	0.01	0.010	-
13:04	0.005	0.016	13:04	0.01	0.010	-
13:05	0.004	0.008	13:05	0.01	0.010	-
13:06	0.006	0.006	13:06	0.01	0.010	-
13:07	0.006	0.006	13:07	0.011	0.010	-
13:08	0.005	0.006	13:08	0.011	0.010	-
13:09	0.005	0.006	13:09	0.01	0.010	-
13:10	0.005	0.005	13:10	0.01	0.010	-
13:11	0.006	0.005	13:11	0.01	0.010	-
13:12	0.005	0.005	13:12	0.01	0.010	-
13:13	0.006	0.005	13:13	0.011	0.010	-
13:14	0.006	0.005	13:14	0.01	0.010	-
			13:15	0.01	0.010	
			13:16	0.011	0.010	
			13:17	0.011	0.010	
			13:18	0.01	0.010	
			13:19	0.01	0.010	
			13:20	0.011	0.010	
			13:21	0.01	0.010	
			13:22	0.011	0.010	

Tuesday, June 9, 2026						
Number of Instances Where Downwind VOCs Exceeds Upwind VOCs + 5 =						0
Number of Comparable Data Points =						349
Start Time:						7:13
End Time:						13:28
PID DATA						
Upwind			Downwind			Exceeds VOCs Alarm Limits
Time	VOC (ppm)	15-Minute Average	Time	VOC (ppm)	15-Minute Average	
7:13	0.4		7:13			
7:14	0.3		7:14			
7:15	0.3		7:15			
7:16	0.3		7:16			
7:17	0.3		7:17			
7:18	0.3		7:18			
7:19	0.3		7:19			
7:20	0.3		7:20			
7:21	0.3		7:21			
7:22	0.3		7:22			
7:23	0.3		7:23			
7:24	0.3		7:24			
7:25	0.3		7:25			
7:26	0.3		7:26			
7:27	0.3	0.3	7:27			
7:28	0.3	0.3	7:28	0.1		
7:29	0.4	0.3	7:29	0		
7:30	0.4	0.3	7:30	0		
7:31	0.3	0.3	7:31	0		
7:32	0.4	0.3	7:32	0		
7:33	0.4	0.3	7:33	0		
7:34	0.4	0.3	7:34	0		
7:35	0.4	0.3	7:35	0		
7:36	0.3	0.3	7:36	0		
7:37	0.3	0.3	7:37	0	0.0	-
7:38	0.3	0.3	7:38	0	0.0	-
7:39	0.4	0.3	7:39	0	0.0	-
7:40	0.4	0.4	7:40	0	0.0	-
7:41	0.4	0.4	7:41	0	0.0	-
7:42	0.4	0.4	7:42	0	0.0	-
7:43	0.4	0.4	7:43	0	0.0	-
7:44	0.4	0.4	7:44	0	0.0	-
7:45	0.3	0.4	7:45	0.1	0.0	-
7:46	0.3	0.4	7:46	0.1	0.0	-
7:47	0.3	0.4	7:47	0.1	0.1	-
7:48	0.3	0.4	7:48	0.1	0.1	-
7:49	0.3	0.3	7:49	0.1	0.1	-
7:50	0.3	0.3	7:50	0.1	0.1	-
7:51	0.3	0.3	7:51	0.1	0.1	-
7:52	0.3	0.3	7:52	0.1	0.1	-
7:53	0.4	0.3	7:53	0.1	0.1	-
7:54	0.4	0.3	7:54	0.1	0.1	-
7:55	0.4	0.3	7:55	0.1	0.1	-
7:56	0.4	0.3	7:56	0.1	0.1	-
7:57	0.4	0.3	7:57	0.1	0.1	-
7:58	0.4	0.3	7:58	0.1	0.1	-
7:59	0.4	0.3	7:59	0.1	0.1	-
8:00	0.4	0.4	8:00	0.1	0.1	-
8:01	0.4	0.4	8:01	0.1	0.1	-
8:02	0.4	0.4	8:02	0.1	0.1	-
8:03	0.4	0.4	8:03	0.1	0.1	-
8:04	0.4	0.4	8:04	0.1	0.1	-
8:05	0.4	0.4	8:05	0.1	0.1	-
8:06	0.4	0.4	8:06	0.1	0.1	-
8:07	0.4	0.4	8:07	0.1	0.1	-
8:08	0.4	0.4	8:08	0.1	0.1	-
8:09	0.4	0.4	8:09	0.1	0.1	-
8:10	0.4	0.4	8:10	0.1	0.1	-
8:11	0.4	0.4	8:11	0.1	0.1	-
8:12	0.4	0.4	8:12	0.1	0.1	-
8:13	0.4	0.4	8:13	0.1	0.1	-
8:14	0.4	0.4	8:14	0.1	0.1	-
8:15	0.4	0.4	8:15	0.1	0.1	-
8:16	0.4	0.4	8:16	0.1	0.1	-
8:17	0.4	0.4	8:17	0.1	0.1	-
8:18	0.4	0.4	8:18	0.1	0.1	-
8:19	0.4	0.4	8:19	0.1	0.1	-
8:20	0.4	0.4	8:20	0.1	0.1	-
8:21	0.4	0.4	8:21	0.1	0.1	-
8:22	0.4	0.4	8:22	0.1	0.1	-
8:23	0.4	0.4	8:23	0.1	0.1	-
8:24	0.4	0.4	8:24	0.1	0.1	-
8:25	0.4	0.4	8:25	0.1	0.1	-
8:26	0.4	0.4	8:26	0.1	0.1	-
8:27	0.4	0.4	8:27	0.2	0.1	-
8:28	0.4	0.4	8:28	0.2	0.1	-
8:29	0.4	0.4	8:29	0.2	0.2	-
8:30	0.4	0.4	8:30	0.2	0.2	-

PID DATA						
Upwind			Downwind			Exceeds VOCs Alarm Limits
Time	VOC (ppm)	15-Minute Average	Time	VOC (ppm)	15-Minute Average	
8:31	0.4	0.4	8:31	0.2	0.2	-
8:32	0.4	0.4	8:32	0.2	0.2	-
8:33	0.4	0.4	8:33	0.2	0.2	-
8:34	0.4	0.4	8:34	0.2	0.2	-
8:35	0.4	0.4	8:35	0.2	0.2	-
8:36	0.4	0.4	8:36	0.2	0.2	-
8:37	0.4	0.4	8:37	0.2	0.2	-
8:38	0.4	0.4	8:38	0.2	0.2	-
8:39	0.4	0.4	8:39	0.2	0.2	-
8:40	0.4	0.4	8:40	0.2	0.2	-
8:41	0.4	0.4	8:41	0.2	0.2	-
8:42	0.4	0.4	8:42	0.2	0.2	-
8:43	0.4	0.4	8:43	0.2	0.2	-
8:44	0.4	0.4	8:44	0.2	0.2	-
8:45	0.4	0.4	8:45	0.2	0.2	-
8:46	0.4	0.4	8:46	0.2	0.2	-
8:47	0.4	0.4	8:47	0.2	0.2	-
8:48	0.4	0.4	8:48	0.2	0.2	-
8:49	0.4	0.4	8:49	0.2	0.2	-
8:50	0.4	0.4	8:50	0.2	0.2	-
8:51	0.4	0.4	8:51	0.2	0.2	-
8:52	0.4	0.4	8:52	0.2	0.2	-
8:53	0.4	0.4	8:53	0.2	0.2	-
8:54	0.4	0.4	8:54	0.2	0.2	-
8:55	0.4	0.4	8:55	0.2	0.2	-
8:56	0.4	0.4	8:56	0.2	0.2	-
8:57	0.4	0.4	8:57	0.2	0.2	-
8:58	0.4	0.4	8:58	0.2	0.2	-
8:59	0.4	0.4	8:59	0.2	0.2	-
9:00	0.4	0.4	9:00	0.2	0.2	-
9:01	0.4	0.4	9:01	0.2	0.2	-
9:02	0.4	0.4	9:02	0.2	0.2	-
9:03	0.4	0.4	9:03	0.2	0.2	-
9:04	0.4	0.4	9:04	0.2	0.2	-
9:05	0.4	0.4	9:05	0.2	0.2	-
9:06	0.4	0.4	9:06	0.2	0.2	-
9:07	0.4	0.4	9:07	0.2	0.2	-
9:08	0.4	0.4	9:08	0.2	0.2	-
9:09	0.4	0.4	9:09	0.2	0.2	-
9:10	0.4	0.4	9:10	0.2	0.2	-
9:11	0.4	0.4	9:11	0.2	0.2	-
9:12	0.4	0.4	9:12	0.2	0.2	-
9:13	0.4	0.4	9:13	0.2	0.2	-
9:14	0.4	0.4	9:14	0.2	0.2	-
9:15	0.4	0.4	9:15	0.2	0.2	-
9:16	0.4	0.4	9:16	0.2	0.2	-
9:17	0.4	0.4	9:17	0.2	0.2	-
9:18	0.4	0.4	9:18	0.2	0.2	-
9:19	0.4	0.4	9:19	0.2	0.2	-
9:20	0.4	0.4	9:20	0.2	0.2	-
9:21	0.4	0.4	9:21	0.2	0.2	-
9:22	0.4	0.4	9:22	0.2	0.2	-
9:23	0.4	0.4	9:23	0.2	0.2	-
9:24	0.4	0.4	9:24	0.2	0.2	-
9:25	0.4	0.4	9:25	0.2	0.2	-
9:26	0.4	0.4	9:26	0.2	0.2	-
9:27	0.4	0.4	9:27	0.2	0.2	-
9:28	0.4	0.4	9:28	0.2	0.2	-
9:29	0.4	0.4	9:29	0.2	0.2	-
9:30	0.5	0.4	9:30	0.2	0.2	-
9:31	0.4	0.4	9:31	0.2	0.2	-
9:32	0.4	0.4	9:32	0.2	0.2	-
9:33	0.4	0.4	9:33	0.2	0.2	-
9:34	0.4	0.4	9:34	0.2	0.2	-
9:35	0.4	0.4	9:35	0.2	0.2	-
9:36	0.4	0.4	9:36	0.2	0.2	-
9:37	0.4	0.4	9:37	0.2	0.2	-
9:38	0.4	0.4	9:38	0.2	0.2	-
9:39	0.4	0.4	9:39	0.2	0.2	-
9:40	0.4	0.4	9:40	0.2	0.2	-
9:41	0.4	0.4	9:41	0.2	0.2	-
9:42	0.4	0.4	9:42	0.2	0.2	-
9:43	0.4	0.4	9:43	0.2	0.2	-
9:44	0.4	0.4	9:44	0.2	0.2	-
9:45	0.4	0.4	9:45	0.2	0.2	-
9:46	0.4	0.4	9:46	0.2	0.2	-
9:47	0.4	0.4	9:47	0.2	0.2	-
9:48	0.4	0.4	9:48	0.2	0.2	-
9:49	0.4	0.4	9:49	0.2	0.2	-
9:50	0.4	0.4	9:50	0.2	0.2	-
9:51	0.4	0.4	9:51	0.2	0.2	-
9:52	0.4	0.4	9:52	0.2	0.2	-
9:53	0.4	0.4	9:53	0.2	0.2	-
9:54	0.4	0.4	9:54	0.2	0.2	-

PID DATA						
Upwind			Downwind			Exceeds VOCs Alarm Limits
Time	VOC (ppm)	15-Minute Average	Time	VOC (ppm)	15-Minute Average	
9:55	0.4	0.4	9:55	0.2	0.2	-
9:56	0.4	0.4	9:56	0.2	0.2	-
9:57	0.4	0.4	9:57	0.2	0.2	-
9:58	0.4	0.4	9:58	0.2	0.2	-
9:59	0.5	0.4	9:59	0.2	0.2	-
10:00	0.5	0.4	10:00	0.2	0.2	-
10:01	0.4	0.4	10:01	0.2	0.2	-
10:02	0.4	0.4	10:02	0.2	0.2	-
10:03	0.4	0.4	10:03	0.2	0.2	-
10:04	0.4	0.4	10:04	0.2	0.2	-
10:05	0.4	0.4	10:05	0.2	0.2	-
10:06	0.4	0.4	10:06	0.2	0.2	-
10:07	0.4	0.4	10:07	0.2	0.2	-
10:08	0.4	0.4	10:08	0.2	0.2	-
10:09	0.4	0.4	10:09	0.2	0.2	-
10:10	0.4	0.4	10:10	0.2	0.2	-
10:11	0.4	0.4	10:11	0.2	0.2	-
10:12	0.4	0.4	10:12	0.2	0.2	-
10:13	0.4	0.4	10:13	0.2	0.2	-
10:14	0.4	0.4	10:14	0.2	0.2	-
10:15	0.4	0.4	10:15	0.2	0.2	-
10:16	0.4	0.4	10:16	0.2	0.2	-
10:17	0.4	0.4	10:17	0.2	0.2	-
10:18	0.4	0.4	10:18	0.2	0.2	-
10:19	0.4	0.4	10:19	0.2	0.2	-
10:20	0.4	0.4	10:20	0.2	0.2	-
10:21	0.4	0.4	10:21	0.2	0.2	-
10:22	0.4	0.4	10:22	0.2	0.2	-
10:23	0.4	0.4	10:23	0.2	0.2	-
10:24	0.4	0.4	10:24	0.2	0.2	-
10:25	0.4	0.4	10:25	0.2	0.2	-
10:26	0.4	0.4	10:26	0.2	0.2	-
10:27	0.4	0.4	10:27	0.2	0.2	-
10:28	0.4	0.4	10:28	0.2	0.2	-
10:29	0.4	0.4	10:29	0.2	0.2	-
10:30	0.4	0.4	10:30	0.2	0.2	-
10:31	0.4	0.4	10:31	0.2	0.2	-
10:32	0.4	0.4	10:32	0.2	0.2	-
10:33	0.4	0.4	10:33	0.2	0.2	-
10:34	0.4	0.4	10:34	0.2	0.2	-
10:35	0.4	0.4	10:35	0.2	0.2	-
10:36	0.4	0.4	10:36	0.2	0.2	-
10:37	0.4	0.4	10:37	0.2	0.2	-
10:38	0.4	0.4	10:38	0.2	0.2	-
10:39	0.4	0.4	10:39	0.2	0.2	-
10:40	0.4	0.4	10:40	0.2	0.2	-
10:41	0.4	0.4	10:41	0.2	0.2	-
10:42	0.4	0.4	10:42	0.2	0.2	-
10:43	0.4	0.4	10:43	0.2	0.2	-
10:44	0.4	0.4	10:44	0.2	0.2	-
10:45	0.4	0.4	10:45	0.2	0.2	-
10:46	0.4	0.4	10:46	0.2	0.2	-
10:47	0.4	0.4	10:47	0.2	0.2	-
10:48	0.4	0.4	10:48	0.2	0.2	-
10:49	0.4	0.4	10:49	0.2	0.2	-
10:50	0.4	0.4	10:50	0.2	0.2	-
10:51	0.4	0.4	10:51	0.2	0.2	-
10:52	0.4	0.4	10:52	0.2	0.2	-
10:53	0.4	0.4	10:53	0.2	0.2	-
10:54	0.4	0.4	10:54	0.2	0.2	-
10:55	0.4	0.4	10:55	0.2	0.2	-
10:56	0.4	0.4	10:56	0.2	0.2	-
10:57	0.4	0.4	10:57	0.2	0.2	-
10:58	0.4	0.4	10:58	0.2	0.2	-
10:59	0.4	0.4	10:59	0.2	0.2	-
11:00	0.4	0.4	11:00	0.2	0.2	-
11:01	0.4	0.4	11:01	0.2	0.2	-
11:02	0.4	0.4	11:02	0.2	0.2	-
11:03	0.4	0.4	11:03	0.2	0.2	-
11:04	0.4	0.4	11:04	0.2	0.2	-
11:05	0.4	0.4	11:05	0.2	0.2	-
11:06	0.4	0.4	11:06	0.2	0.2	-
11:07	0.4	0.4	11:07	0.2	0.2	-
11:08	0.4	0.4	11:08	0.2	0.2	-
11:09	0.4	0.4	11:09	0.2	0.2	-
11:10	0.4	0.4	11:10	0.2	0.2	-
11:11	0.4	0.4	11:11	0.2	0.2	-
11:12	0.4	0.4	11:12	0.2	0.2	-
11:13	0.4	0.4	11:13	0.1	0.2	-
11:14	0.4	0.4	11:14	0.1	0.2	-
11:15	0.4	0.4	11:15	0.1	0.2	-
11:16	0.4	0.4	11:16	0.2	0.1	-
11:17	0.4	0.4	11:17	0.1	0.1	-
11:18	0.4	0.4	11:18	0.1	0.1	-

PID DATA						
Upwind			Downwind			Exceeds VOCs Alarm Limits
Time	VOC (ppm)	15-Minute Average	Time	VOC (ppm)	15-Minute Average	
11:19	0.4	0.4	11:19	0.1	0.1	-
11:20	0.4	0.4	11:20	0.1	0.1	-
11:21	0.4	0.4	11:21	0.1	0.1	-
11:22	0.4	0.4	11:22	0.1	0.1	-
11:23	0.4	0.4	11:23	0.1	0.1	-
11:24	0.4	0.4	11:24	0.1	0.1	-
11:25	0.4	0.4	11:25	0.1	0.1	-
11:26	0.4	0.4	11:26	0.1	0.1	-
11:27	0.4	0.4	11:27	0.1	0.1	-
11:28	0.4	0.4	11:28	0.1	0.1	-
11:29	0.4	0.4	11:29	0.1	0.1	-
11:30	0.4	0.4	11:30	0.1	0.1	-
11:31	0.4	0.4	11:31	0.1	0.1	-
11:32	0.4	0.4	11:32	0.1	0.1	-
11:33	0.4	0.4	11:33	0.1	0.1	-
11:34	0.4	0.4	11:34	0.1	0.1	-
11:35	0.4	0.4	11:35	0.1	0.1	-
11:36	0.4	0.4	11:36	0.1	0.1	-
11:37	0.4	0.4	11:37	0.1	0.1	-
11:38	0.4	0.4	11:38	0.1	0.1	-
11:39	0.4	0.4	11:39	0.1	0.1	-
11:40	0.4	0.4	11:40	0.1	0.1	-
11:41	0.4	0.4	11:41	0.1	0.1	-
11:42	0.4	0.4	11:42	0.1	0.1	-
11:43	0.4	0.4	11:43	0.1	0.1	-
11:44	0.4	0.4	11:44	0.1	0.1	-
11:45	0.4	0.4	11:45	0.1	0.1	-
11:46	0.4	0.4	11:46	0.1	0.1	-
11:47	0.4	0.4	11:47	0.1	0.1	-
11:48	0.4	0.4	11:48	0.1	0.1	-
11:49	0.4	0.4	11:49	0.1	0.1	-
11:50	0.4	0.4	11:50	0.1	0.1	-
11:51	0.4	0.4	11:51	0.1	0.1	-
11:52	0.4	0.4	11:52	0.1	0.1	-
11:53	0.4	0.4	11:53	0.1	0.1	-
11:54	0.4	0.4	11:54	0.1	0.1	-
11:55	0.4	0.4	11:55	0.1	0.1	-
11:56	0.4	0.4	11:56	0.1	0.1	-
11:57	0.4	0.4	11:57	0.2	0.1	-
11:58	0.4	0.4	11:58	0.1	0.1	-
11:59	0.4	0.4	11:59	0.1	0.1	-
12:00	0.4	0.4	12:00	0.1	0.1	-
12:01	0.4	0.4	12:01	0.1	0.1	-
12:02	0.4	0.4	12:02	0.1	0.1	-
12:03	0.4	0.4	12:03	0.1	0.1	-
12:04	0.4	0.4	12:04	0.1	0.1	-
12:05	0.4	0.4	12:05	0.1	0.1	-
12:06	0.4	0.4	12:06	0.1	0.1	-
12:07	0.4	0.4	12:07	0.1	0.1	-
12:08	0.4	0.4	12:08	0.1	0.1	-
12:09	0.4	0.4	12:09	0.1	0.1	-
12:10	0.4	0.4	12:10	0.1	0.1	-
12:11	0.4	0.4	12:11	0.1	0.1	-
12:12	0.4	0.4	12:12	0.1	0.1	-
12:13	0.4	0.4	12:13	0.1	0.1	-
12:14	0.4	0.4	12:14	0.1	0.1	-
12:15	0.4	0.4	12:15	0.1	0.1	-
12:16	0.4	0.4	12:16	0.1	0.1	-
12:17	0.4	0.4	12:17	0.1	0.1	-
12:18	0.4	0.4	12:18	0.1	0.1	-
12:19	0.4	0.4	12:19	0.1	0.1	-
12:20	0.4	0.4	12:20	0.1	0.1	-
12:21	0.4	0.4	12:21	0.1	0.1	-
12:22	0.4	0.4	12:22	0.1	0.1	-
12:23	0.4	0.4	12:23	0.1	0.1	-
12:24	0.4	0.4	12:24	0.1	0.1	-
12:25	0.4	0.4	12:25	0.1	0.1	-
12:26	0.4	0.4	12:26	0.1	0.1	-
12:27	0.4	0.4	12:27	0.1	0.1	-
12:28	0.4	0.4	12:28	0.1	0.1	-
12:29	0.4	0.4	12:29	0.1	0.1	-
12:30	0.4	0.4	12:30	0.1	0.1	-
12:31	0.4	0.4	12:31	0.1	0.1	-
12:32	0.4	0.4	12:32	0.1	0.1	-
12:33	0.4	0.4	12:33	0.1	0.1	-
12:34	0.4	0.4	12:34	0.1	0.1	-

PID DATA						
Upwind			Downwind			Exceeds VOCs Alarm Limits
Time	VOC (ppm)	15-Minute Average	Time	VOC (ppm)	15-Minute Average	
12:35	0.4	0.4	12:35	0.1	0.1	-
12:36	0.4	0.4	12:36	0.1	0.1	-
12:37	0.4	0.4	12:37	0.1	0.1	-
12:38	0.4	0.4	12:38	0.1	0.1	-
12:39	0.4	0.4	12:39	0.1	0.1	-
12:40	0.4	0.4	12:40	0.1	0.1	-
12:41	0.4	0.4	12:41	0.1	0.1	-
12:42	0.4	0.4	12:42	0.1	0.1	-
12:43	0.4	0.4	12:43	0.1	0.1	-
12:44	0.4	0.4	12:44	0.1	0.1	-
12:45	0.4	0.4	12:45	0.1	0.1	-
12:46	0.4	0.4	12:46	0.1	0.1	-
12:47	0.4	0.4	12:47	0.1	0.1	-
12:48	0.4	0.4	12:48	0.1	0.1	-
12:49	0.4	0.4	12:49	0.1	0.1	-
12:50	0.4	0.4	12:50	0.1	0.1	-
12:51	0.4	0.4	12:51	0.1	0.1	-
12:52	0.4	0.4	12:52	0.1	0.1	-
12:53	0.4	0.4	12:53	0.1	0.1	-
12:54	0.4	0.4	12:54	0.1	0.1	-
12:55	0.4	0.4	12:55	0.1	0.1	-
12:56	0.4	0.4	12:56	0.1	0.1	-
12:57	0.4	0.4	12:57	0.1	0.1	-
12:58	0.4	0.4	12:58	0.1	0.1	-
12:59	0.4	0.4	12:59	0.1	0.1	-
13:00	0.4	0.4	13:00	0.1	0.1	-
13:01	0.4	0.4	13:01	0.1	0.1	-
13:02	0.4	0.4	13:02	0.1	0.1	-
13:03	0.5	0.4	13:03	0.1	0.1	-
13:04	0.5	0.4	13:04	0.1	0.1	-
13:05	0.4	0.4	13:05	0.1	0.1	-
13:06	0.4	0.4	13:06	0.1	0.1	-
13:07	0.4	0.4	13:07	0.1	0.1	-
13:08	0.5	0.4	13:08	0.1	0.1	-
13:09	0.5	0.4	13:09	0.1	0.1	-
13:10	0.5	0.4	13:10	0.1	0.1	-
13:11	0.5	0.4	13:11	0.1	0.1	-
13:12	0.5	0.4	13:12	0.1	0.1	-
13:13	0.5	0.5	13:13	0.1	0.1	-
13:14	0.5	0.5	13:14	0.1	0.1	-
13:15	0.4	0.5	13:15	0.1	0.1	-
13:16	0.4	0.5	13:16	0.1	0.1	-
13:17	0.4	0.5	13:17	0.1	0.1	-
13:18	0.4	0.5	13:18	0.1	0.1	-
13:19	0.5	0.5	13:19	0.1	0.1	-
13:20	0.4	0.5	13:20	0.1	0.1	-
13:21	0.4	0.5	13:21	0.1	0.1	-
13:22	0.5	0.5	13:22	0.1	0.1	-
13:23	0.4	0.5	13:23	0.1	0.1	-
13:24	0.4	0.4	13:24	0.1	0.1	-
13:25	0.5	0.4	13:25	0.1	0.1	-
13:26	0.4	0.4				
13:27	0.4	0.4				
13:28	0.4	0.4				