

DAILY OBSERVATION REPORT

LANGAN

PROJECT No.: 170824801 PROJECT: 172 Montrose Avenue LOCATION: Brooklyn, New York BCP SITE NUMBER: C224417	CLIENT: Montrose Meserole Owner LLC	DATE: Wednesday, June 10, 2026 WEATHER: Sunny, 70-82 °F Wind: NE @ 2-12 mph TIME: 7:00 – 15:45 MONITOR: Aron Farber	
EQUIPMENT: Geoprobe 7822DT Drill Rig Hand Tools Interface Probe Community Air Monitoring Plan Stations Handheld Photoionization Detector	PRESENT AT SITE: Environmental Staff (Langan): Aron Farber Environmental Drilling Contractor (EPhase 2): Luke Reiss, Sam Yanuck		
<p>OBSERVATIONS, DISCUSSIONS, TEST RESULTS, ETC.: Langan was present to perform work in accordance with the New York State Department of Environmental Conservation (NYSDEC)-approved Soil Vapor Extraction (SVE) Pilot Test Work Plan and the Remedial Action Work Plan (RAWP) for Brownfield Cleanup Program (BCP) Site No. C224417 at 172 Montrose Avenue (Block 3062, Lot 12). Observed activities were as follows:</p> <p>Site Activities</p> <ul style="list-style-type: none"> • EPhase 2 attempted advancement of VP-03 as part of the SVE Pilot Test Work Plan; refusal was encountered at about 15 feet below grade surface (bgs). The boring location was abandoned and a step-out will be advanced on the following work day. • EPhase 2 advanced a soil boring to about 37 feet below grade surface (bgs) to install monitoring well MW08 for baseline groundwater sampling. Langan documented the work, logged the soil boring, and screened the recovered soil/fill for odors, staining, and organic vapors using a photoionization detector (PID). No evidence of impacts was observed. <ul style="list-style-type: none"> ○ A two-inch-diameter groundwater monitoring well (MW08) was installed in the borehole consisting of ten feet of prepacked 0.01-inch slotted polyvinyl chloride (PVC) screen from about 37 feet to 27 feet bgs, and PVC riser from about 27 bgs to grade surface. ○ Monitoring well MW08 was developed using a submersible pump. Approximately 4 gallons of purged groundwater were containerized in a 55-gallon steel drum in the northern part of the site pending future off-site disposal. • Langan collected three baseline groundwater samples, one each from monitoring wells MW02, MW07 and MW08 in the central and northern parts of the site. 			
Cc:	C. Devin, S. Fernholz, K. Semon, B. Gochenaur (Langan)	By:	Aron Farber LANGAN

Sampling

- Langan collected groundwater samples for laboratory analysis. Samples were relinquished to Pace Analytical, a New York State Department of Health (NYSDOH) Environmental Laboratory Approval Program (ELAP) laboratory under standard chain-of-custody protocol.
- The following groundwater samples were analyzed for Part 375/Target Compound List (TCL) VOCs
 - MW02_061026
 - MW07_061026
 - MW08_061026
- The following QA/QC samples were submitted for analysis of Part 375/TCL VOCs:
 - GWTB03_061026

Community Air Monitoring Plan (CAMP) Activities

- Langan set up CAMP stations at the upwind and downwind site perimeters to monitor VOCs and particulate matter less than 10 micrometers (µm) in diameter (PM10) during intrusive activity. PM10 and VOC concentrations did not exceed the action levels established in the site CAMP. Fugitive dust or odors associated with intrusive activities were not observed.

Anticipated Activities

- EPhase 2 will continue SVE well installation as part of the SVE Pilot Test Work Plan.

Cc:	C. Devin, S. Fernholz, K. Semon, B. Gochenaur (Langan)	By:	Aron Farber LANGAN
-----	--	-----	------------------------------

Site Photographs:



Photo 1: View of low-flow groundwater sampling setup at monitoring well MW06 (facing northeast).

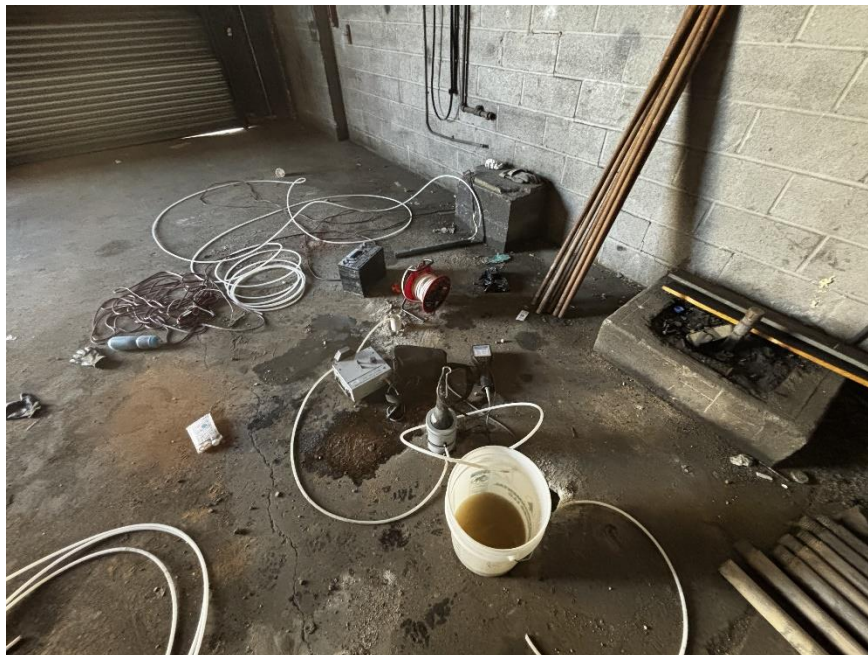


Photo 2: View of low-flow groundwater sampling setup at monitoring well MW03 (facing northeast).

Cc:	C. Devin, S. Fernholz, K. Semon, B. Gochenaur (Langan)	By:	Aron Farber LANGAN
-----	---	-----	------------------------------

Figure 1: Monitoring Well Location Map



Legend

- Approximate Site Boundary
- Tax Block
- Tax Parcel

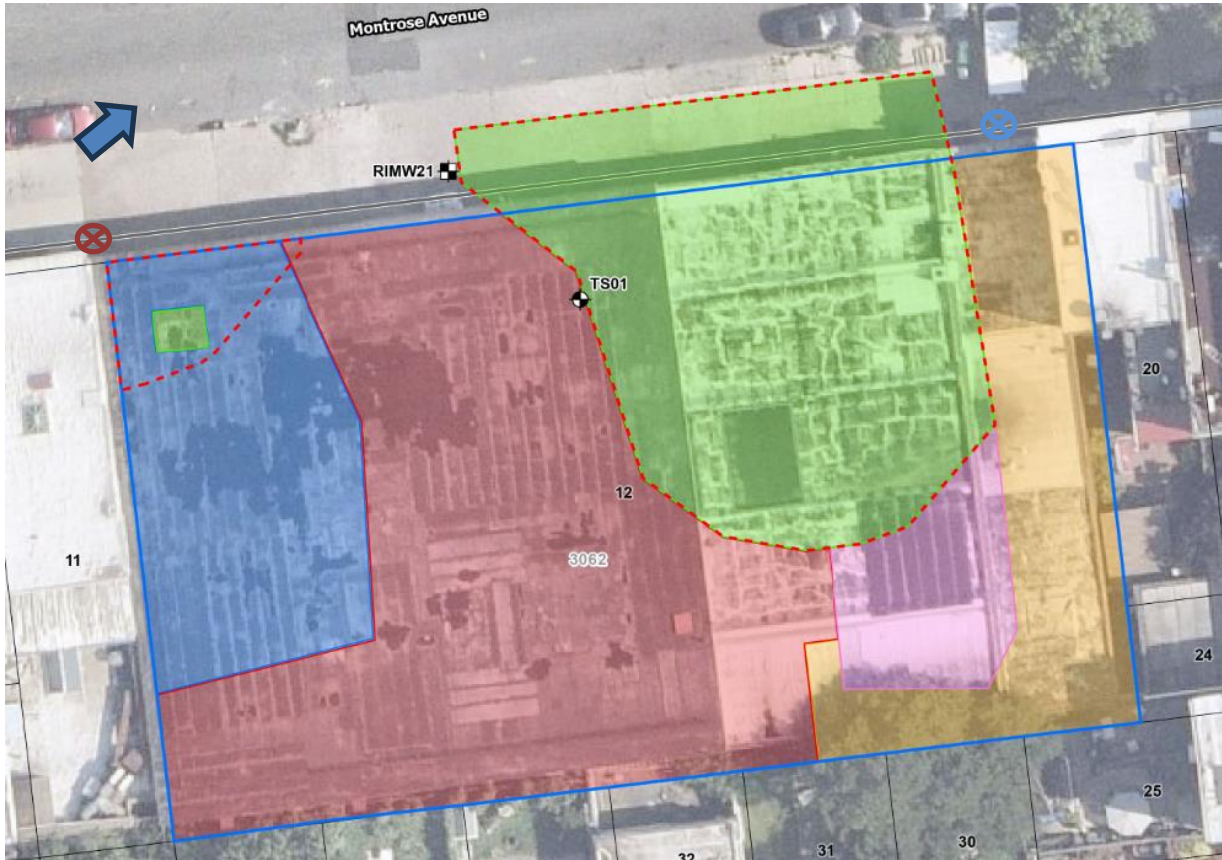
- Waste Characterization Boring
- Lead Delineation Boring
- SVE well boring
- GW Treatability boring

- Monitoring Well Boring Advanced and Installed
- Monitoring Well Sampled
- Upwind CAMP Station
- Downwind CAMP Station
- Wind Direction
- Drum Staging Area

Cc: C. Devin, S. Fernholz, K. Semon, B. Gochenaur (Langan)

By: Aron Farber
LANGAN

Figure 2: TSWP Boring Location Map



Legend

- Proposed Groundwater Treatability Soil Boring Location
- Proposed Groundwater Treatability Groundwater Sample Location
- Approximate Site Boundary
- Tax Block
- Tax Parcel
- Excavation to about 2 feet bgs
- Excavation to about 4 feet bgs
- Excavation to about 10 feet bgs
- Excavation to about 12 feet bgs
- Excavation to about 15 to 17 feet bgs
- Approximate Groundwater Treatment Extent
- Soil Boring Attempted Today
- Upwind CAMP Station
- Downwind CAMP Station
- Wind Direction

Cc:	C. Devin, S, Fernholz, K. Semon, B. Gochenaur (Langan)	By:	Aron Farber LANGAN
-----	--	-----	------------------------------

Date: Wednesday, June 10, 2026

Start: 8:05

End: 13:36

Observer: Aron Farber

UPWIND - UW
DOWNWIND - DW

Particulate Monitoring		
	UW	DW
Daily Average	0.015	0.021
Minimum 15min Average	0.009	0.015
Maximum 15min Average	0.041	0.035
High Intervals "exceedances" (15min > 1.5 + Upwind level)	NA	0.0
Minimum 1min Reading	0.008	0.015
Maximum 1min Reading	0.107	0.201

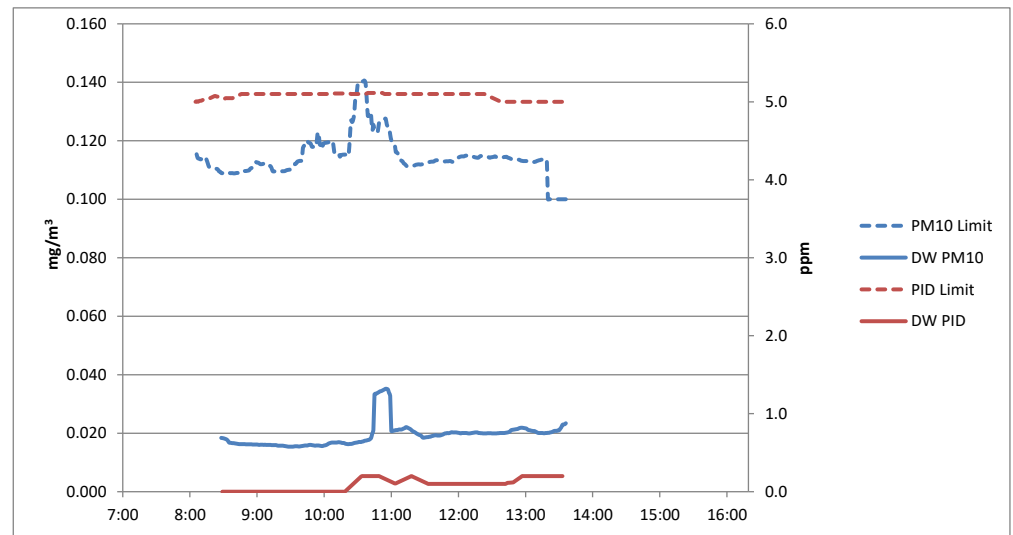
NA - Not applicable, upwind unit used for background concentrations

All reported units are mg/m³ or milligrams per cubic meter unless specified otherwise

Organic Vapor Monitoring		
	UW	DW
Daily Average	0.1	0.1
Minimum 15min Average	0.0	0.0
Maximum 15min Average	0.1	0.2
High Intervals "exceedances" (15min > 5 + Upwind level)	NA	0.0
Minimum 1min Reading	0.0	0.0
Maximum 1min Reading	0.2	0.2

NA - Not applicable, upwind unit used for background concentrations

All reported units are ppm or parts per million unless specified otherwise



Wednesday, June 10, 2026						
Number of Instances Where Downwind Particulates Exceeds Upwind Particulate + 150 =						0
Number of Comparable Data Points =						306
Start Time:						8:06
End Time:						13:36
PARTICULATE DATA						
Upwind			Downwind			Exceeds Particulate Alarm Limits
Time	Concentration (mg/m ³)	15-Minute Average	Time	Concentration (mg/m ³)	15-Minute Average	
8:06	0.029		8:06			
8:07	0.014		8:07			
8:08	0.014		8:08			
8:09	0.012		8:09	0.02		
8:10	0.011		8:10	0.018		
8:11	0.014		8:11	0.017		
8:12	0.011		8:12	0.016		
8:13	0.01		8:13	0.018		
8:14	0.022		8:14	0.018		
8:15	0.026		8:15	0.017		
8:16	0.026		8:16	0.018		
8:17	0.011		8:17	0.018		
8:18	0.011		8:18	0.019		
8:19	0.01		8:19	0.022		
8:20	0.01	0.015	8:20	0.026		
8:21	0.009	0.014	8:21	0.018		
8:22	0.012	0.014	8:22	0.017		
8:23	0.011	0.014	8:23	0.017		
8:24	0.011	0.014	8:24	0.016		
8:25	0.018	0.014	8:25	0.017		
8:26	0.01	0.014	8:26	0.018		
8:27	0.017	0.014	8:27	0.017		
8:28	0.01	0.014	8:28	0.018	0.018	-
8:29	0.009	0.013	8:29	0.017	0.018	-
8:30	0.009	0.012	8:30	0.016	0.018	-
8:31	0.009	0.011	8:31	0.016	0.018	-
8:32	0.01	0.011	8:32	0.016	0.018	-
8:33	0.008	0.011	8:33	0.016	0.018	-
8:34	0.009	0.011	8:34	0.016	0.017	-
8:35	0.01	0.011	8:35	0.017	0.017	-
8:36	0.009	0.011	8:36	0.017	0.017	-
8:37	0.008	0.011	8:37	0.016	0.017	-
8:38	0.009	0.010	8:38	0.016	0.017	-
8:39	0.008	0.010	8:39	0.016	0.017	-
8:40	0.008	0.010	8:40	0.016	0.017	-
8:41	0.009	0.009	8:41	0.017	0.016	-
8:42	0.01	0.009	8:42	0.016	0.016	-
8:43	0.009	0.009	8:43	0.017	0.016	-
8:44	0.013	0.009	8:44	0.016	0.016	-
8:45	0.008	0.009	8:45	0.016	0.016	-
8:46	0.009	0.009	8:46	0.016	0.016	-
8:47	0.008	0.009	8:47	0.016	0.016	-
8:48	0.009	0.009	8:48	0.016	0.016	-
8:49	0.009	0.009	8:49	0.016	0.016	-
8:50	0.008	0.009	8:50	0.016	0.016	-
8:51	0.009	0.009	8:51	0.017	0.016	-
8:52	0.008	0.009	8:52	0.016	0.016	-
8:53	0.008	0.009	8:53	0.016	0.016	-
8:54	0.008	0.009	8:54	0.016	0.016	-
8:55	0.009	0.009	8:55	0.016	0.016	-
8:56	0.01	0.009	8:56	0.016	0.016	-
8:57	0.01	0.009	8:57	0.016	0.016	-
8:58	0.009	0.009	8:58	0.017	0.016	-
8:59	0.012	0.009	8:59	0.016	0.016	-
9:00	0.009	0.009	9:00	0.016	0.016	-
9:01	0.013	0.009	9:01	0.015	0.016	-
9:02	0.014	0.010	9:02	0.015	0.016	-
9:03	0.009	0.010	9:03	0.017	0.016	-
9:04	0.009	0.010	9:04	0.016	0.016	-
9:05	0.009	0.010	9:05	0.016	0.016	-
9:06	0.01	0.010	9:06	0.016	0.016	-
9:07	0.01	0.010	9:07	0.017	0.016	-
9:08	0.016	0.010	9:08	0.015	0.016	-
9:09	0.011	0.011	9:09	0.016	0.016	-
9:10	0.013	0.011	9:10	0.016	0.016	-
9:11	0.011	0.011	9:11	0.016	0.016	-
9:12	0.019	0.012	9:12	0.016	0.016	-
9:13	0.025	0.013	9:13	0.016	0.016	-
9:14	0.01	0.013	9:14	0.016	0.016	-
9:15	0.009	0.013	9:15	0.016	0.016	-
9:16	0.009	0.012	9:16	0.015	0.016	-
9:17	0.01	0.012	9:17	0.015	0.016	-
9:18	0.009	0.012	9:18	0.015	0.016	-
9:19	0.01	0.012	9:19	0.015	0.016	-
9:20	0.011	0.012	9:20	0.016	0.016	-
9:21	0.013	0.012	9:21	0.016	0.016	-
9:22	0.009	0.012	9:22	0.017	0.016	-

PARTICULATE DATA						
Upwind			Downwind			Exceeds Particulate Alarm Limits
Time	Concentration (mg/m ³)	15-Minute Average	Time	Concentration (mg/m ³)	15-Minute Average	
9:23	0.01	0.012	9:23	0.015	0.016	-
9:24	0.008	0.012	9:24	0.015	0.016	-
9:25	0.009	0.011	9:25	0.015	0.016	-
9:26	0.009	0.011	9:26	0.015	0.016	-
9:27	0.009	0.011	9:27	0.015	0.015	-
9:28	0.009	0.010	9:28	0.015	0.015	-
9:29	0.009	0.010	9:29	0.016	0.015	-
9:30	0.009	0.010	9:30	0.016	0.015	-
9:31	0.009	0.010	9:31	0.015	0.015	-
9:32	0.011	0.010	9:32	0.015	0.015	-
9:33	0.011	0.010	9:33	0.016	0.015	-
9:34	0.011	0.010	9:34	0.016	0.016	-
9:35	0.011	0.010	9:35	0.016	0.016	-
9:36	0.01	0.010	9:36	0.016	0.016	-
9:37	0.009	0.010	9:37	0.016	0.015	-
9:38	0.01	0.010	9:38	0.015	0.015	-
9:39	0.009	0.010	9:39	0.016	0.016	-
9:40	0.012	0.010	9:40	0.016	0.016	-
9:41	0.011	0.010	9:41	0.016	0.016	-
9:42	0.01	0.010	9:42	0.016	0.016	-
9:43	0.01	0.010	9:43	0.016	0.016	-
9:44	0.01	0.010	9:44	0.016	0.016	-
9:45	0.017	0.011	9:45	0.016	0.016	-
9:46	0.012	0.011	9:46	0.017	0.016	-
9:47	0.015	0.011	9:47	0.016	0.016	-
9:48	0.025	0.012	9:48	0.016	0.016	-
9:49	0.013	0.012	9:49	0.015	0.016	-
9:50	0.02	0.013	9:50	0.015	0.016	-
9:51	0.012	0.013	9:51	0.015	0.016	-
9:52	0.011	0.013	9:52	0.015	0.016	-
9:53	0.01	0.013	9:53	0.016	0.016	-
9:54	0.011	0.013	9:54	0.016	0.016	-
9:55	0.076	0.018	9:55	0.016	0.016	-
9:56	0.022	0.018	9:56	0.015	0.016	-
9:57	0.034	0.020	9:57	0.015	0.016	-
9:58	0.01	0.020	9:58	0.015	0.016	-
9:59	0.01	0.020	9:59	0.017	0.016	-
10:00	0.01	0.019	10:00	0.018	0.016	-
10:01	0.01	0.019	10:01	0.018	0.016	-
10:02	0.011	0.019	10:02	0.018	0.016	-
10:03	0.01	0.018	10:03	0.019	0.016	-
10:04	0.012	0.018	10:04	0.019	0.016	-
10:05	0.015	0.018	10:05	0.017	0.017	-
10:06	0.019	0.018	10:06	0.017	0.017	-
10:07	0.017	0.018	10:07	0.016	0.017	-
10:08	0.066	0.022	10:08	0.016	0.017	-
10:09	0.021	0.023	10:09	0.016	0.017	-
10:10	0.016	0.019	10:10	0.016	0.017	-
10:11	0.015	0.018	10:11	0.015	0.017	-
10:12	0.015	0.017	10:12	0.016	0.017	-
10:13	0.038	0.019	10:13	0.016	0.017	-
10:14	0.012	0.019	10:14	0.016	0.017	-
10:15	0.013	0.019	10:15	0.017	0.017	-
10:16	0.01	0.019	10:16	0.016	0.017	-
10:17	0.013	0.019	10:17	0.018	0.017	-
10:18	0.011	0.020	10:18	0.018	0.017	-
10:19	0.021	0.020	10:19	0.016	0.016	-
10:20	0.011	0.020	10:20	0.016	0.016	-
10:21	0.011	0.019	10:21	0.016	0.016	-
10:22	0.015	0.019	10:22	0.016	0.016	-
10:23	0.021	0.016	10:23	0.017	0.016	-
10:24	0.022	0.016	10:24	0.016	0.016	-
10:25	0.019	0.016	10:25	0.017	0.016	-
10:26	0.01	0.016	10:26	0.017	0.017	-
10:27	0.012	0.016	10:27	0.018	0.017	-
10:28	0.018	0.015	10:28	0.017	0.017	-
10:29	0.019	0.015	10:29	0.017	0.017	-
10:30	0.015	0.015	10:30	0.018	0.017	-
10:31	0.011	0.015	10:31	0.018	0.017	-
10:32	0.013	0.015	10:32	0.018	0.017	-
10:33	0.011	0.015	10:33	0.018	0.017	-
10:34	0.013	0.015	10:34	0.018	0.017	-
10:35	0.011	0.015	10:35	0.017	0.017	-
10:36	0.025	0.016	10:36	0.019	0.017	-
10:37	0.098	0.021	10:37	0.017	0.017	-
10:38	0.107	0.027	10:38	0.018	0.018	-
10:39	0.014	0.026	10:39	0.018	0.018	-
10:40	0.033	0.027	10:40	0.018	0.018	-
10:41	0.047	0.030	10:41	0.021	0.018	-
10:42	0.096	0.035	10:42	0.024	0.018	-
10:43	0.027	0.036	10:43	0.039	0.020	-
10:44	0.07	0.039	10:44	0.035	0.021	-
10:45	0.026	0.040	10:45	0.201	0.033	-
10:46	0.013	0.040	10:46	0.022	0.034	-

PARTICULATE DATA						
Upwind			Downwind			Exceeds Particulate Alarm Limits
Time	Concentration (mg/m ³)	15-Minute Average	Time	Concentration (mg/m ³)	15-Minute Average	
10:47	0.012	0.040	10:47	0.019	0.034	-
10:48	0.013	0.040	10:48	0.022	0.034	-
10:49	0.013	0.040	10:49	0.021	0.034	-
10:50	0.015	0.041	10:50	0.021	0.034	-
10:51	0.012	0.040	10:51	0.02	0.034	-
10:52	0.02	0.035	10:52	0.02	0.035	-
10:53	0.017	0.029	10:53	0.021	0.035	-
10:54	0.014	0.029	10:54	0.021	0.035	-
10:55	0.054	0.030	10:55	0.021	0.035	-
10:56	0.026	0.029	10:56	0.02	0.035	-
10:57	0.021	0.024	10:57	0.021	0.035	-
10:58	0.056	0.025	10:58	0.021	0.034	-
10:59	0.04	0.023	10:59	0.021	0.033	-
11:00	0.018	0.023	11:00	0.021	0.021	-
11:01	0.014	0.023	11:01	0.021	0.021	-
11:02	0.017	0.023	11:02	0.021	0.021	-
11:03	0.053	0.026	11:03	0.023	0.021	-
11:04	0.014	0.026	11:04	0.023	0.021	-
11:05	0.018	0.026	11:05	0.021	0.021	-
11:06	0.02	0.027	11:06	0.021	0.021	-
11:07	0.026	0.027	11:07	0.022	0.021	-
11:08	0.021	0.027	11:08	0.021	0.021	-
11:09	0.015	0.028	11:09	0.021	0.021	-
11:10	0.024	0.026	11:10	0.023	0.021	-
11:11	0.016	0.025	11:11	0.023	0.022	-
11:12	0.018	0.025	11:12	0.023	0.022	-
11:13	0.018	0.022	11:13	0.026	0.022	-
11:14	0.011	0.020	11:14	0.02	0.022	-
11:15	0.011	0.020	11:15	0.018	0.022	-
11:16	0.01	0.019	11:16	0.018	0.022	-
11:17	0.011	0.019	11:17	0.018	0.021	-
11:18	0.01	0.016	11:18	0.018	0.021	-
11:19	0.011	0.016	11:19	0.018	0.021	-
11:20	0.011	0.016	11:20	0.018	0.021	-
11:21	0.01	0.015	11:21	0.018	0.020	-
11:22	0.011	0.014	11:22	0.018	0.020	-
11:23	0.011	0.013	11:23	0.017	0.020	-
11:24	0.012	0.013	11:24	0.018	0.020	-
11:25	0.014	0.012	11:25	0.02	0.019	-
11:26	0.012	0.012	11:26	0.021	0.019	-
11:27	0.012	0.012	11:27	0.019	0.019	-
11:28	0.012	0.011	11:28	0.019	0.019	-
11:29	0.011	0.011	11:29	0.019	0.018	-
11:30	0.011	0.011	11:30	0.019	0.019	-
11:31	0.011	0.011	11:31	0.019	0.019	-
11:32	0.012	0.011	11:32	0.019	0.019	-
11:33	0.011	0.011	11:33	0.018	0.019	-
11:34	0.012	0.012	11:34	0.02	0.019	-
11:35	0.012	0.012	11:35	0.018	0.019	-
11:36	0.013	0.012	11:36	0.021	0.019	-
11:37	0.012	0.012	11:37	0.019	0.019	-
11:38	0.012	0.012	11:38	0.019	0.019	-
11:39	0.012	0.012	11:39	0.019	0.019	-
11:40	0.013	0.012	11:40	0.021	0.019	-
11:41	0.013	0.012	11:41	0.019	0.019	-
11:42	0.012	0.012	11:42	0.019	0.019	-
11:43	0.012	0.012	11:43	0.019	0.019	-
11:44	0.013	0.012	11:44	0.02	0.019	-
11:45	0.014	0.012	11:45	0.021	0.019	-
11:46	0.014	0.012	11:46	0.021	0.020	-
11:47	0.014	0.013	11:47	0.022	0.020	-
11:48	0.013	0.013	11:48	0.021	0.020	-
11:49	0.013	0.013	11:49	0.02	0.020	-
11:50	0.013	0.013	11:50	0.02	0.020	-
11:51	0.013	0.013	11:51	0.02	0.020	-
11:52	0.013	0.013	11:52	0.02	0.020	-
11:53	0.016	0.013	11:53	0.021	0.020	-
11:54	0.014	0.013	11:54	0.021	0.020	-
11:55	0.013	0.013	11:55	0.02	0.020	-
11:56	0.012	0.013	11:56	0.019	0.020	-
11:57	0.012	0.013	11:57	0.019	0.020	-
11:58	0.012	0.013	11:58	0.019	0.020	-
11:59	0.012	0.013	11:59	0.019	0.020	-
12:00	0.012	0.013	12:00	0.02	0.020	-
12:01	0.013	0.013	12:01	0.02	0.020	-
12:02	0.013	0.013	12:02	0.02	0.020	-
12:03	0.014	0.013	12:03	0.023	0.020	-
12:04	0.013	0.013	12:04	0.02	0.020	-
12:05	0.013	0.013	12:05	0.02	0.020	-
12:06	0.014	0.013	12:06	0.02	0.020	-
12:07	0.013	0.013	12:07	0.02	0.020	-
12:08	0.013	0.013	12:08	0.02	0.020	-
12:09	0.013	0.013	12:09	0.02	0.020	-
12:10	0.015	0.013	12:10	0.02	0.020	-

PARTICULATE DATA						
Upwind			Downwind			Exceeds Particulate Alarm Limits
Time	Concentration (mg/m ³)	15-Minute Average	Time	Concentration (mg/m ³)	15-Minute Average	
12:11	0.019	0.013	12:11	0.02	0.020	-
12:12	0.017	0.014	12:12	0.02	0.020	-
12:13	0.016	0.014	12:13	0.02	0.020	-
12:14	0.016	0.014	12:14	0.02	0.020	-
12:15	0.015	0.014	12:15	0.021	0.020	-
12:16	0.015	0.015	12:16	0.02	0.020	-
12:17	0.014	0.015	12:17	0.02	0.020	-
12:18	0.014	0.015	12:18	0.02	0.020	-
12:19	0.013	0.015	12:19	0.02	0.020	-
12:20	0.016	0.015	12:20	0.019	0.020	-
12:21	0.015	0.015	12:21	0.02	0.020	-
12:22	0.014	0.015	12:22	0.019	0.020	-
12:23	0.013	0.015	12:23	0.02	0.020	-
12:24	0.014	0.015	12:24	0.02	0.020	-
12:25	0.014	0.015	12:25	0.02	0.020	-
12:26	0.015	0.015	12:26	0.021	0.020	-
12:27	0.015	0.015	12:27	0.02	0.020	-
12:28	0.014	0.014	12:28	0.02	0.020	-
12:29	0.014	0.014	12:29	0.02	0.020	-
12:30	0.014	0.014	12:30	0.02	0.020	-
12:31	0.014	0.014	12:31	0.02	0.020	-
12:32	0.015	0.014	12:32	0.02	0.020	-
12:33	0.019	0.015	12:33	0.02	0.020	-
12:34	0.016	0.015	12:34	0.02	0.020	-
12:35	0.014	0.015	12:35	0.02	0.020	-
12:36	0.013	0.015	12:36	0.02	0.020	-
12:37	0.014	0.015	12:37	0.02	0.020	-
12:38	0.014	0.015	12:38	0.02	0.020	-
12:39	0.014	0.015	12:39	0.02	0.020	-
12:40	0.013	0.015	12:40	0.02	0.020	-
12:41	0.013	0.014	12:41	0.021	0.020	-
12:42	0.012	0.014	12:42	0.021	0.020	-
12:43	0.016	0.014	12:43	0.021	0.020	-
12:44	0.015	0.014	12:44	0.021	0.020	-
12:45	0.015	0.014	12:45	0.022	0.020	-
12:46	0.016	0.015	12:46	0.023	0.021	-
12:47	0.016	0.015	12:47	0.026	0.021	-
12:48	0.014	0.014	12:48	0.022	0.021	-
12:49	0.015	0.014	12:49	0.021	0.021	-
12:50	0.015	0.014	12:50	0.021	0.021	-
12:51	0.014	0.014	12:51	0.021	0.021	-
12:52	0.013	0.014	12:52	0.021	0.021	-
12:53	0.014	0.014	12:53	0.021	0.021	-
12:54	0.014	0.014	12:54	0.023	0.022	-
12:55	0.015	0.014	12:55	0.022	0.022	-
12:56	0.013	0.014	12:56	0.022	0.022	-
12:57	0.013	0.015	12:57	0.021	0.022	-
12:58	0.012	0.014	12:58	0.02	0.022	-
12:59	0.013	0.014	12:59	0.02	0.022	-
13:00	0.013	0.014	13:00	0.021	0.022	-
13:01	0.013	0.014	13:01	0.021	0.022	-
13:02	0.014	0.014	13:02	0.021	0.021	-
13:03	0.014	0.014	13:03	0.02	0.021	-
13:04	0.014	0.014	13:04	0.02	0.021	-
13:05	0.013	0.013	13:05	0.019	0.021	-
13:06	0.015	0.014	13:06	0.02	0.021	-
13:07	0.013	0.014	13:07	0.02	0.021	-
13:08	0.014	0.014	13:08	0.021	0.021	-
13:09	0.012	0.013	13:09	0.02	0.021	-
13:10	0.012	0.013	13:10	0.019	0.020	-
13:11	0.012	0.013	13:11	0.019	0.020	-
13:12	0.012	0.013	13:12	0.02	0.020	-
13:13	0.012	0.013	13:13	0.02	0.020	-
13:14	0.013	0.013	13:14	0.02	0.020	-
13:15	0.013	0.013	13:15	0.021	0.020	-
13:16	0.013	0.013	13:16	0.02	0.020	-
13:17	0.013	0.013	13:17	0.021	0.020	-
13:18	0.012	0.013	13:18	0.021	0.020	-

PARTICULATE DATA						
Upwind			Downwind			Exceeds Particulate Alarm Limits
Time	Concentration (mg/m ³)	15-Minute Average	Time	Concentration (mg/m ³)	15-Minute Average	
13:19	0.013	0.013	13:19	0.02	0.020	-
13:20	0.013	0.013	13:20	0.02	0.020	-
13:21	0.013	0.013	13:21	0.02	0.020	-
13:22	0.015	0.013	13:22	0.022	0.020	-
13:23	0.015	0.013	13:23	0.022	0.020	-
13:24	0.015	0.013	13:24	0.022	0.020	-
13:25	0.014	0.013	13:25	0.022	0.021	-
13:26	0.014	0.013	13:26	0.021	0.021	-
13:27	0.013	0.013	13:27	0.02	0.021	-
13:28	0.014	0.014	13:28	0.02	0.021	-
13:29	0.013	0.014	13:29	0.023	0.021	-
13:30	0.013	0.014	13:30	0.021	0.021	-
13:31	0.013	0.014	13:31	0.028	0.022	-
13:32	0.013	0.014	13:32	0.029	0.022	-
13:33	0.013	0.014	13:33	0.033	0.023	-
13:34			13:34	0.022	0.023	
13:35			13:35	0.021	0.023	
13:36			13:36	0.025	0.023	

Wednesday, June 10, 2026						
Number of Instances Where Downwind VOCs Exceeds Upwind VOCs + 5 =						0
Number of Comparable Data Points =						305
Start Time:						8:05
End Time:						13:33
PID DATA						
Time	Upwind		Downwind			Exceeds VOCs Alarm Limits
	VOC (ppm)	15-Minute Average	Time	VOC (ppm)	15-Minute Average	
8:05	0.1		0.3			
8:06	0.0		0.3			
8:07	0.0		0.3			
8:08	0.0		0.3	0.1		
8:09	0.0		0.3	0.0		
8:10	0.0		0.3	0.0		
8:11	0.0		0.3	0.0		
8:12	0.0		0.3	0.0		
8:13	0.0		0.3	0.0		
8:14	0.0		0.3	0.0		
8:15	0.0		0.3	0.0		
8:16	0.0		0.3	0.0		
8:17	0.0		0.3	0.0		
8:18	0.0		0.3	0.0		
8:19	0.0	0.0	0.3	0.0		
8:20	0.0	0.0	0.3	0.0		
8:21	0.1	0.0	0.3	0.0		
8:22	0.1	0.0	0.3	0.0		
8:23	0.0	0.0	0.3	0.0		
8:24	0.1	0.0	0.4	0.0		
8:25	0.1	0.0	0.4	0.0		
8:26	0.1	0.0	0.4	0.0		
8:27	0.1	0.0	0.4	0.0		
8:28	0.0	0.0	0.4	0.0		
8:29	0.0	0.0	0.4	0.0	0.0	-
8:30	0.0	0.0	0.4	0.0	0.0	-
8:31	0.1	0.0	0.4	0.0	0.0	-
8:32	0.1	0.1	0.4	0.0	0.0	-
8:33	0.1	0.1	0.4	0.0	0.0	-
8:34	0.1	0.1	0.4	0.0	0.0	-
8:35	0.1	0.1	0.4	0.0	0.0	-
8:36	0.1	0.1	0.4	0.0	0.0	-
8:37	0.0	0.1	0.4	0.0	0.0	-
8:38	0.0	0.1	0.4	0.0	0.0	-
8:39	0.0	0.1	0.4	0.0	0.0	-
8:40	0.0	0.1	0.4	0.0	0.0	-
8:41	0.0	0.0	0.4	0.0	0.0	-
8:42	0.0	0.0	0.4	0.0	0.0	-
8:43	0.0	0.0	0.4	0.0	0.0	-
8:44	0.0	0.0	0.4	0.0	0.0	-
8:45	0.1	0.0	0.4	0.0	0.0	-
8:46	0.1	0.0	0.4	0.0	0.0	-
8:47	0.1	0.0	0.4	0.0	0.0	-
8:48	0.1	0.0	0.4	0.0	0.0	-
8:49	0.1	0.0	0.4	0.0	0.0	-
8:50	0.1	0.0	0.4	0.0	0.0	-
8:51	0.1	0.0	0.4	0.0	0.0	-
8:52	0.1	0.1	0.4	0.0	0.0	-
8:53	0.1	0.1	0.4	0.0	0.0	-
8:54	0.1	0.1	0.4	0.0	0.0	-
8:55	0.1	0.1	0.4	0.0	0.0	-
8:56	0.1	0.1	0.4	0.0	0.0	-
8:57	0.1	0.1	0.4	0.0	0.0	-
8:58	0.1	0.1	0.4	0.0	0.0	-
8:59	0.1	0.1	0.4	0.0	0.0	-
9:00	0.1	0.1	0.4	0.0	0.0	-
9:01	0.1	0.1	0.4	0.0	0.0	-
9:02	0.1	0.1	0.4	0.0	0.0	-
9:03	0.1	0.1	0.4	0.0	0.0	-
9:04	0.1	0.1	0.4	0.0	0.0	-
9:05	0.1	0.1	0.4	0.0	0.0	-
9:06	0.1	0.1	0.4	0.0	0.0	-
9:07	0.1	0.1	0.4	0.0	0.0	-
9:08	0.1	0.1	0.4	0.0	0.0	-
9:09	0.1	0.1	0.4	0.0	0.0	-
9:10	0.1	0.1	0.4	0.0	0.0	-
9:11	0.1	0.1	0.4	0.0	0.0	-
9:12	0.1	0.1	0.4	0.0	0.0	-
9:13	0.1	0.1	0.4	0.0	0.0	-
9:14	0.1	0.1	0.4	0.0	0.0	-
9:15	0.1	0.1	0.4	0.0	0.0	-
9:16	0.1	0.1	0.4	0.0	0.0	-
9:17	0.1	0.1	0.4	0.0	0.0	-
9:18	0.1	0.1	0.4	0.0	0.0	-
9:19	0.1	0.1	0.4	0.0	0.0	-
9:20	0.1	0.1	0.4	0.0	0.0	-
9:21	0.1	0.1	0.4	0.0	0.0	-
9:22	0.1	0.1	0.4	0.0	0.0	-

PID DATA						
Upwind			Downwind			Exceeds VOCs Alarm Limits
Time	VOC (ppm)	15-Minute Average	Time	VOC (ppm)	15-Minute Average	
9:23	0.1	0.1	0.4	0.0	0.0	-
9:24	0.1	0.1	0.4	0.0	0.0	-
9:25	0.1	0.1	0.4	0.0	0.0	-
9:26	0.1	0.1	0.4	0.0	0.0	-
9:27	0.1	0.1	0.4	0.0	0.0	-
9:28	0.1	0.1	0.4	0.0	0.0	-
9:29	0.1	0.1	0.4	0.0	0.0	-
9:30	0.1	0.1	0.4	0.0	0.0	-
9:31	0.1	0.1	0.4	0.0	0.0	-
9:32	0.1	0.1	0.4	0.0	0.0	-
9:33	0.1	0.1	0.4	0.0	0.0	-
9:34	0.1	0.1	0.4	0.0	0.0	-
9:35	0.1	0.1	0.4	0.0	0.0	-
9:36	0.1	0.1	0.4	0.0	0.0	-
9:37	0.1	0.1	0.4	0.0	0.0	-
9:38	0.1	0.1	0.4	0.0	0.0	-
9:39	0.1	0.1	0.4	0.0	0.0	-
9:40	0.1	0.1	0.4	0.0	0.0	-
9:41	0.1	0.1	0.4	0.0	0.0	-
9:42	0.1	0.1	0.4	0.0	0.0	-
9:43	0.1	0.1	0.4	0.0	0.0	-
9:44	0.1	0.1	0.4	0.0	0.0	-
9:45	0.1	0.1	0.4	0.0	0.0	-
9:46	0.1	0.1	0.4	0.0	0.0	-
9:47	0.1	0.1	0.4	0.0	0.0	-
9:48	0.1	0.1	0.4	0.0	0.0	-
9:49	0.1	0.1	0.4	0.0	0.0	-
9:50	0.1	0.1	0.4	0.0	0.0	-
9:51	0.1	0.1	0.4	0.0	0.0	-
9:52	0.1	0.1	0.4	0.0	0.0	-
9:53	0.1	0.1	0.4	0.0	0.0	-
9:54	0.1	0.1	0.4	0.0	0.0	-
9:55	0.1	0.1	0.4	0.0	0.0	-
9:56	0.1	0.1	0.4	0.0	0.0	-
9:57	0.1	0.1	0.4	0.0	0.0	-
9:58	0.1	0.1	0.4	0.0	0.0	-
9:59	0.1	0.1	0.4	0.0	0.0	-
10:00	0.1	0.1	0.4	0.0	0.0	-
10:01	0.1	0.1	0.4	0.0	0.0	-
10:02	0.1	0.1	0.4	0.0	0.0	-
10:03	0.1	0.1	0.4	0.0	0.0	-
10:04	0.1	0.1	0.4	0.0	0.0	-
10:05	0.1	0.1	0.4	0.0	0.0	-
10:06	0.1	0.1	0.4	0.0	0.0	-
10:07	0.1	0.1	0.4	0.0	0.0	-
10:08	0.1	0.1	0.4	0.0	0.0	-
10:09	0.1	0.1	0.4	0.0	0.0	-
10:10	0.1	0.1	0.4	0.0	0.0	-
10:11	0.1	0.1	0.4	0.0	0.0	-
10:12	0.1	0.1	0.4	0.0	0.0	-
10:13	0.1	0.1	0.4	0.0	0.0	-
10:14	0.1	0.1	0.4	0.0	0.0	-
10:15	0.1	0.1	0.4	0.0	0.0	-
10:16	0.1	0.1	0.4	0.0	0.0	-
10:17	0.1	0.1	0.4	0.0	0.0	-
10:18	0.1	0.1	0.4	0.0	0.0	-
10:19	0.1	0.1	0.4	0.0	0.0	-
10:20	0.1	0.1	0.4	0.0	0.0	-
10:21	0.1	0.1	0.4	0.0	0.0	-
10:22	0.2	0.1	0.4	0.0	0.0	-
10:23	0.1	0.1	0.4	0.0	0.1	-
10:24	0.1	0.1	0.4	0.1	0.1	-
10:25	0.1	0.1	0.4	0.2	0.1	-
10:26	0.1	0.1	0.4	0.2	0.1	-
10:27	0.1	0.1	0.4	0.2	0.1	-
10:28	0.1	0.1	0.4	0.2	0.1	-
10:29	0.1	0.1	0.4	0.2	0.1	-
10:30	0.1	0.1	0.4	0.2	0.2	-
10:31	0.1	0.1	0.4	0.2	0.2	-
10:32	0.1	0.1	0.4	0.2	0.2	-
10:33	0.1	0.1	0.4	0.2	0.2	-
10:34	0.1	0.1	0.4	0.2	0.2	-
10:35	0.1	0.1	0.4	0.2	0.2	-
10:36	0.1	0.1	0.4	0.2	0.2	-
10:37	0.1	0.1	0.4	0.2	0.2	-
10:38	0.1	0.1	0.4	0.2	0.2	-
10:39	0.1	0.1	0.4	0.2	0.2	-
10:40	0.1	0.1	0.4	0.2	0.2	-
10:41	0.1	0.1	0.4	0.2	0.2	-
10:42	0.1	0.1	0.4	0.2	0.2	-
10:43	0.1	0.1	0.4	0.2	0.2	-
10:44	0.1	0.1	0.4	0.2	0.2	-
10:45	0.1	0.1	0.4	0.2	0.2	-
10:46	0.1	0.1	0.4	0.2	0.2	-

PID DATA						
Upwind			Downwind			Exceeds VOCs Alarm Limits
Time	VOC (ppm)	15-Minute Average	Time	VOC (ppm)	15-Minute Average	
10:47	0.1	0.1	0.4	0.2	0.2	-
10:48	0.1	0.1	0.5	0.2	0.2	-
10:49	0.1	0.1	0.5	0.2	0.2	-
10:50	0.1	0.1	0.5	0.2	0.2	-
10:51	0.2	0.1	0.5	0.2	0.2	-
10:52	0.2	0.1	0.5	0.2	0.2	-
10:53	0.1	0.1	0.5	0.2	0.2	-
10:54	0.1	0.1	0.5	0.2	0.2	-
10:55	0.1	0.1	0.5	0.1	0.2	-
10:56	0.1	0.1	0.5	0.1	0.2	-
10:57	0.1	0.1	0.5	0.1	0.1	-
10:58	0.1	0.1	0.5	0.1	0.1	-
10:59	0.1	0.1	0.5	0.1	0.1	-
11:00	0.1	0.1	0.5	0.1	0.1	-
11:01	0.1	0.1	0.5	0.1	0.1	-
11:02	0.1	0.1	0.5	0.1	0.1	-
11:03	0.1	0.1	0.5	0.1	0.1	-
11:04	0.1	0.1	0.5	0.1	0.1	-
11:05	0.1	0.1	0.5	0.1	0.1	-
11:06	0.1	0.1	0.5	0.1	0.1	-
11:07	0.1	0.1	0.5	0.1	0.1	-
11:08	0.1	0.1	0.5	0.1	0.1	-
11:09	0.1	0.1	0.5	0.2	0.1	-
11:10	0.1	0.1	0.5	0.2	0.1	-
11:11	0.1	0.1	0.5	0.2	0.2	-
11:12	0.1	0.1	0.5	0.2	0.2	-
11:13	0.1	0.1	0.5	0.2	0.2	-
11:14	0.1	0.1	0.5	0.2	0.2	-
11:15	0.1	0.1	0.5	0.2	0.2	-
11:16	0.1	0.1	0.5	0.2	0.2	-
11:17	0.1	0.1	0.5	0.2	0.2	-
11:18	0.1	0.1	0.5	0.2	0.2	-
11:19	0.1	0.1	0.5	0.2	0.2	-
11:20	0.1	0.1	0.5	0.2	0.2	-
11:21	0.1	0.1	0.5	0.2	0.2	-
11:22	0.1	0.1	0.5	0.2	0.2	-
11:23	0.1	0.1	0.5	0.2	0.2	-
11:24	0.1	0.1	0.5	0.1	0.2	-
11:25	0.1	0.1	0.5	0.1	0.2	-
11:26	0.1	0.1	0.5	0.1	0.1	-
11:27	0.1	0.1	0.5	0.1	0.1	-
11:28	0.1	0.1	0.5	0.1	0.1	-
11:29	0.1	0.1	0.5	0.1	0.1	-
11:30	0.1	0.1	0.5	0.1	0.1	-
11:31	0.1	0.1	0.5	0.1	0.1	-
11:32	0.1	0.1	0.5	0.1	0.1	-
11:33	0.1	0.1	0.5	0.1	0.1	-
11:34	0.1	0.1	0.5	0.1	0.1	-
11:35	0.1	0.1	0.5	0.1	0.1	-
11:36	0.1	0.1	0.5	0.1	0.1	-
11:37	0.1	0.1	0.5	0.1	0.1	-
11:38	0.1	0.1	0.5	0.1	0.1	-
11:39	0.1	0.1	0.5	0.1	0.1	-
11:40	0.1	0.1	0.5	0.1	0.1	-
11:41	0.1	0.1	0.5	0.1	0.1	-
11:42	0.1	0.1	0.5	0.1	0.1	-
11:43	0.1	0.1	0.5	0.1	0.1	-
11:44	0.1	0.1	0.5	0.1	0.1	-
11:45	0.1	0.1	0.5	0.1	0.1	-
11:46	0.1	0.1	0.5	0.1	0.1	-
11:47	0.1	0.1	0.5	0.1	0.1	-
11:48	0.1	0.1	0.5	0.1	0.1	-
11:49	0.1	0.1	0.5	0.1	0.1	-
11:50	0.1	0.1	0.5	0.1	0.1	-
11:51	0.1	0.1	0.5	0.1	0.1	-
11:52	0.1	0.1	0.5	0.1	0.1	-
11:53	0.1	0.1	0.5	0.1	0.1	-
11:54	0.1	0.1	0.5	0.1	0.1	-
11:55	0.1	0.1	0.5	0.1	0.1	-
11:56	0.1	0.1	0.5	0.1	0.1	-
11:57	0.1	0.1	0.5	0.1	0.1	-
11:58	0.1	0.1	0.5	0.1	0.1	-
11:59	0.1	0.1	0.5	0.1	0.1	-
12:00	0.1	0.1	0.5	0.1	0.1	-
12:01	0.1	0.1	0.5	0.1	0.1	-
12:02	0.1	0.1	0.5	0.1	0.1	-
12:03	0.1	0.1	0.5	0.1	0.1	-
12:04	0.1	0.1	0.5	0.1	0.1	-
12:05	0.1	0.1	0.5	0.1	0.1	-
12:06	0.1	0.1	0.5	0.1	0.1	-
12:07	0.1	0.1	0.5	0.1	0.1	-
12:08	0.1	0.1	0.5	0.1	0.1	-
12:09	0.1	0.1	0.5	0.1	0.1	-
12:10	0.1	0.1	0.5	0.1	0.1	-

PID DATA						
Upwind			Downwind			Exceeds VOCs Alarm Limits
Time	VOC (ppm)	15-Minute Average	Time	VOC (ppm)	15-Minute Average	
12:11	0.1	0.1	0.5	0.1	0.1	-
12:12	0.1	0.1	0.5	0.1	0.1	-
12:13	0.1	0.1	0.5	0.1	0.1	-
12:14	0.1	0.1	0.5	0.1	0.1	-
12:15	0.1	0.1	0.5	0.1	0.1	-
12:16	0.1	0.1	0.5	0.1	0.1	-
12:17	0.1	0.1	0.5	0.1	0.1	-
12:18	0.1	0.1	0.5	0.1	0.1	-
12:19	0.1	0.1	0.5	0.1	0.1	-
12:20	0.1	0.1	0.5	0.1	0.1	-
12:21	0.1	0.1	0.5	0.1	0.1	-
12:22	0.1	0.1	0.5	0.1	0.1	-
12:23	0.1	0.1	0.5	0.1	0.1	-
12:24	0.1	0.1	0.5	0.1	0.1	-
12:25	0.1	0.1	0.5	0.1	0.1	-
12:26	0.1	0.1	0.5	0.1	0.1	-
12:27	0.1	0.1	0.5	0.1	0.1	-
12:28	0.1	0.1	0.5	0.1	0.1	-
12:29	0.1	0.1	0.5	0.1	0.1	-
12:30	0.1	0.1	0.5	0.1	0.1	-
12:31	0.1	0.1	0.5	0.1	0.1	-
12:32	0.1	0.1	0.5	0.1	0.1	-
12:33	0.1	0.1	0.5	0.1	0.1	-
12:34	0.1	0.1	0.5	0.1	0.1	-
12:35	0.1	0.1	0.5	0.1	0.1	-
12:36	0.1	0.1	0.5	0.1	0.1	-
12:37	0.0	0.1	0.5	0.1	0.1	-
12:38	0.0	0.1	0.5	0.1	0.1	-
12:39	0.0	0.1	0.5	0.1	0.1	-
12:40	0.0	0.1	0.5	0.1	0.1	-
12:41	0.0	0.1	0.5	0.1	0.1	-
12:42	0.0	0.1	0.5	0.1	0.1	-
12:43	0.0	0.1	0.5	0.1	0.1	-
12:44	0.0	0.0	0.5	0.1	0.1	-
12:45	0.0	0.0	0.5	0.1	0.1	-
12:46	0.0	0.0	0.5	0.1	0.1	-
12:47	0.0	0.0	0.5	0.1	0.1	-
12:48	0.0	0.0	0.5	0.2	0.1	-
12:49	0.0	0.0	0.5	0.2	0.1	-
12:50	0.0	0.0	0.5	0.2	0.1	-
12:51	0.0	0.0	0.5	0.2	0.1	-
12:52	0.0	0.0	0.5	0.2	0.2	-
12:53	0.0	0.0	0.5	0.2	0.2	-
12:54	0.0	0.0	0.5	0.2	0.2	-
12:55	0.0	0.0	0.5	0.2	0.2	-
12:56	0.0	0.0	0.5	0.2	0.2	-
12:57	0.0	0.0	0.5	0.2	0.2	-
12:58	0.0	0.0	0.5	0.2	0.2	-
12:59	0.0	0.0	0.5	0.2	0.2	-
13:00	0.0	0.0	0.5	0.2	0.2	-
13:01	0.0	0.0	0.5	0.2	0.2	-
13:02	0.0	0.0	0.5	0.2	0.2	-
13:03	0.0	0.0	0.5	0.2	0.2	-
13:04	0.0	0.0	0.5	0.2	0.2	-
13:05	0.0	0.0	0.5	0.2	0.2	-
13:06	0.0	0.0	0.5	0.2	0.2	-
13:07	0.0	0.0	0.5	0.2	0.2	-
13:08	0.0	0.0	0.5	0.2	0.2	-
13:09	0.0	0.0	0.5	0.2	0.2	-
13:10	0.0	0.0	0.5	0.2	0.2	-
13:11	0.0	0.0	0.5	0.2	0.2	-
13:12	0.0	0.0	0.5	0.2	0.2	-
13:13	0.0	0.0	0.6	0.2	0.2	-
13:14	0.0	0.0	0.6	0.2	0.2	-
13:15	0.0	0.0	0.6	0.2	0.2	-
13:16	0.0	0.0	0.6	0.2	0.2	-
13:17	0.0	0.0	0.6	0.2	0.2	-
13:18	0.0	0.0	0.6	0.2	0.2	-
13:19	0.0	0.0	0.6	0.2	0.2	-
13:20	0.0	0.0	0.6	0.2	0.2	-
13:21	0.0	0.0	0.6	0.2	0.2	-
13:22	0.0	0.0	0.6	0.2	0.2	-
13:23	0.0	0.0	0.6	0.2	0.2	-
13:24	0.0	0.0	0.6	0.2	0.2	-
13:25	0.0	0.0	0.6	0.2	0.2	-
13:26	0.0	0.0	0.6	0.2	0.2	-

PID DATA						
Upwind			Downwind			Exceeds VOCs Alarm Limits
Time	VOC (ppm)	15-Minute Average	Time	VOC (ppm)	15-Minute Average	
13:27	0.0	0.0	0.6	0.2	0.2	-
13:28	0.0	0.0	0.6	0.2	0.2	-
13:29	0.0	0.0	0.6	0.2	0.2	-
13:30	0.0	0.0	0.6	0.2	0.2	-
13:31	0.0	0.0	0.6	0.2	0.2	-
13:32	0.0	0.0	0.6	0.2	0.2	-
13:33	0.0	0.0	0.6	0.2	0.2	-