

DAILY OBSERVATION REPORT

LANGAN

PROJECT No.: 170824801 PROJECT: 172 Montrose Avenue LOCATION: Brooklyn, New York BCP SITE NUMBER: C224417	CLIENT: Montrose Meserole Owner LLC	DATE: Saturday, June 20, 2026 WEATHER: Sunny, 68-81 °F Wind: SE @ 2-12 mph TIME: 7:00 – 15:00 MONITOR: Romeo Tiu
EQUIPMENT: Geoprobe 7822DT Drill Rig Hand Tools Community Air Monitoring Plan Stations Handheld Photoionization Detector	PRESENT AT SITE: Environmental Staff (Langan): Romeo Tiu Environmental Drilling Contractor (AARCO): Selvin Hernandez, Julio P.	

OBSERVATIONS, DISCUSSIONS, TEST RESULTS, ETC.: Langan was present to perform work in accordance with the New York State Department of Environmental Conservation (NYSDEC)-approved Soil Vapor Extraction (SVE) Pilot Test Work Plan and the Remedial Action Work Plan (RAWP) for Brownfield Cleanup Program (BCP) Site No. C224417 at 172 Montrose Avenue (Block 3062, Lot 12). Observed activities were as follows:

Site Activities

- AARCO used a Geoprobe 7822DT drill rig to advance a soil boring for SVE-01 using mud rotary drilling methods to a final depth of 26 feet below ground surface (bgs).
 - A four-inch-diameter SVE well was installed in the borehole consisting of five feet of Schedule 40 polyvinyl chloride (PVC) screen set at about 25 to 20 feet bgs, and PVC riser pipe set from about 20 feet bgs to 1 foot above grade surface (ags).
- AARCO used a Geoprobe 7822DT to core through the slab for four proposed monitoring point locations (VP-01 through VP-04). VPs were further advanced using hand tools to about 5 feet bgs.

Cc:	C. Devin, S. Fernholz, K. Semon, B. Gochenaur (Langan)	By:	Romeo Tiu LANGAN
------------	---	------------	----------------------------

Sampling

- No samples were collected this day.

Community Air Monitoring Plan (CAMP) Activities

- Langan set up CAMP stations at the upwind and downwind site perimeters to monitor VOCs and particulate matter less than 10 micrometers (μm) in diameter (PM10) during intrusive activity. PM10 and VOC concentrations did not exceed the action levels established in the site CAMP. Fugitive dust or odors associated with intrusive activities were not observed.

Anticipated Activities

- AARCO will continue SVE VP installation as part of the SVE Pilot Test Work Plan.

Cc:	C. Devin, S, Fernholz, K. Semon, B. Gochenaur (Langan)	By:	Romeo Tiu LANGAN
-----	---	-----	----------------------------

Site Photographs:

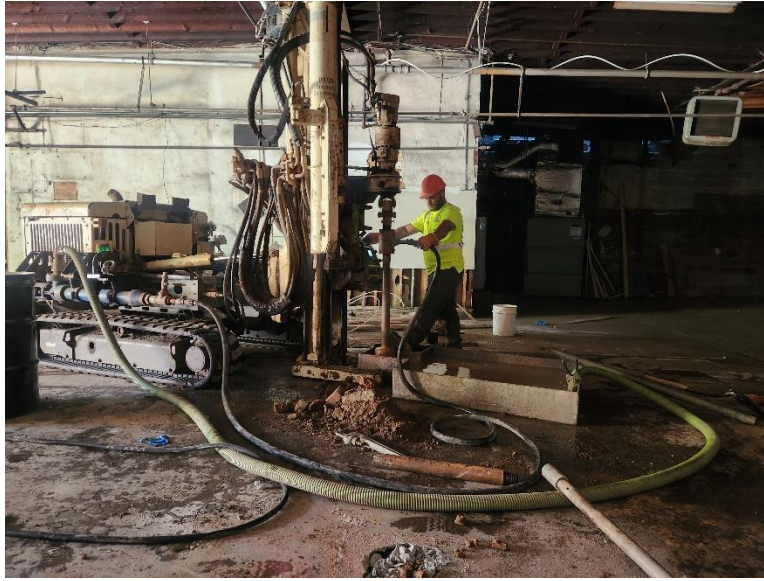


Photo 1: View of AARCO advancing a soil boring for soil vapor extraction well SVE-01 (facing east).

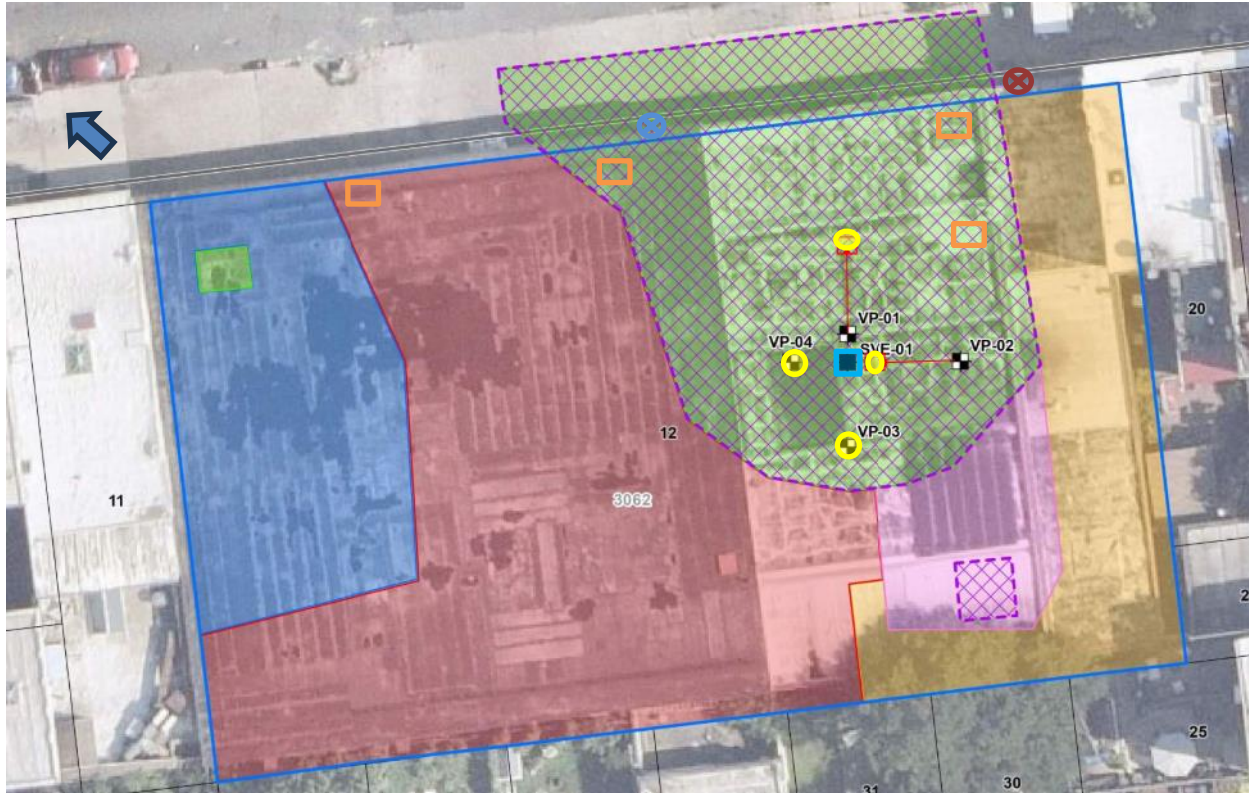


Photo 2: General view of the site (facing south).

Cc: C. Devin, S. Fernholz, K. Semon, B. Gochenaur
(Langan)

By: Romeo Tiu
LANGAN

Figure 1: SVE Pilot Test Area Well Network Map



Legend

- Proposed Vacuum Monitoring Probe Location
- Proposed Soil Vapor Extraction Well Location
- Approximate Site Boundary
- Tax Block
- Tax Parcel
- Excavation to about 2 feet bgs
- Excavation to about 4 feet bgs
- Excavation to about 10 feet bgs
- Excavation to about 12 feet bgs
- Excavation to about 15 to 17 feet bgs
- Approximate Soil Vapor Extraction Treatment Extents

- Soil Boring Advanced
- SVE Pilot Test Well Installed
- ⊗ Upwind CAMP Station
- ⊗ Downwind CAMP Station
- ↑ Wind Direction
- Drum Staging Area
- ➔ SVE Pilot Test Well Location Moved

Cc: C. Devin, S. Fernholz, K. Semon, B. Gochenaur (Langan)

By: Romeo Tiu
LANGAN

Date: Saturday, June 20, 2026

Start: 8:05

End: 15:18

Observer: Romeo Tiu

UPWIND - UW
DOWNWIND - DW

Particulate Monitoring		
	UW	DW
Daily Average	0.007	0.002
Minimum 15min Average	0.001	0.000
Maximum 15min Average	0.026	0.041
High Intervals "exceedances" (15min > 1.5 + Upwind level)	NA	0.0
Minimum 1min Reading	0.000	0.000
Maximum 1min Reading	0.102	0.038

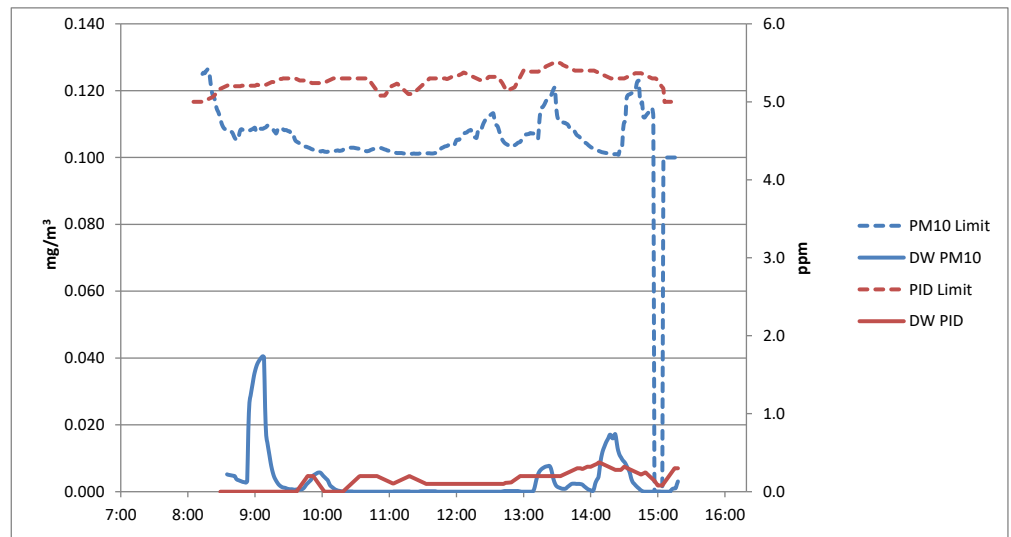
NA - Not applicable, upwind unit used for background concentrations

All reported units are mg/m³ or milligrams per cubic meter unless specified otherwise

Organic Vapor Monitoring		
	UW	DW
Daily Average	0.3	0.1
Minimum 15min Average	0.0	0.0
Maximum 15min Average	0.5	0.4
High Intervals "exceedances" (15min > 5 + Upwind level)	NA	0.0
Minimum 1min Reading	0.0	0.0
Maximum 1min Reading	0.6	0.4

NA - Not applicable, upwind unit used for background concentrations

All reported units are ppm or parts per million unless specified otherwise



Saturday, June 20, 2026						
Number of Instances Where Downwind Particulates Exceeds Upwind Particulate + 150 =						0
Number of Comparable Data Points =						380
Start Time:						8:13
End Time:						15:18
PARTICULATE DATA						
Upwind			Downwind			Exceeds Particulate Alarm Limits
Time	Concentration (mg/m ³)	15-Minute Average	Time	Concentration (mg/m ³)	15-Minute Average	
8:13	0.018		8:13	-		
8:14	0.029		8:14	0.006		
8:15	0.009		8:15	0.007		
8:16	0.007		8:16	0.005		
8:17	0.008		8:17	0.005		
8:18	0.021		8:18	0.005		
8:19	0.049		8:19	0.005		
8:20	0.045		8:20	0.005		
8:21	0.032		8:21	0.005		
8:22	0.02		8:22	0.004		
8:23	0.017		8:23	0.004		
8:24	0.036		8:24	0.004		
8:25	0.035		8:25	0.004		
8:26	0.024		8:26	0.004		
8:27	0.025	0.025	8:27	0.005		
8:28	0.024	0.025	8:28	0.013		
8:29	0.026	0.025	8:29	0.008		
8:30	0.017	0.026	8:30	0.006		
8:31	0.013	0.026	8:31	0.005		
8:32	0.012	0.026	8:32	0.005		
8:33	0.01	0.026	8:33	0.004		
8:34	0.009	0.023	8:34	0.004		
8:35	0.007	0.020	8:35	0.003	0.005	-
8:36	0.008	0.019	8:36	0.003	0.005	-
8:37	0.009	0.018	8:37	0.003	0.005	-
8:38	0.005	0.017	8:38	0.003	0.005	-
8:39	0.011	0.016	8:39	0.003	0.005	-
8:40	0.016	0.014	8:40	0.003	0.005	-
8:41	0.014	0.014	8:41	0.003	0.005	-
8:42	0.011	0.013	8:42	0.003	0.005	-
8:43	0.007	0.012	8:43	0.003	0.004	-
8:44	0.006	0.010	8:44	0.003	0.004	-
8:45	0.004	0.009	8:45	0.004	0.003	-
8:46	0.004	0.009	8:46	0.003	0.003	-
8:47	0.007	0.009	8:47	0.003	0.003	-
8:48	0.007	0.008	8:48	0.002	0.003	-
8:49	0.005	0.008	8:49	0.002	0.003	-
8:50	0.008	0.008	8:50	0.002	0.003	-
8:51	0.005	0.008	8:51	0.002	0.003	-
8:52	0.005	0.008	8:52	0.002	0.003	-
8:53	0.005	0.008	8:53	0.010	0.003	-
8:54	0.005	0.007	8:54	0.230	0.018	-
8:55	0.004	0.006	8:55	0.128	0.027	-
8:56	0.004	0.006	8:56	0.033	0.029	-
8:57	0.005	0.005	8:57	0.033	0.031	-
8:58	0.004	0.005	8:58	0.032	0.033	-
8:59	0.011	0.006	8:59	0.033	0.035	-
9:00	0.029	0.007	9:00	0.026	0.036	-
9:01	0.02	0.008	9:01	0.021	0.037	-
9:02	0.01	0.008	9:02	0.017	0.038	-
9:03	0.004	0.008	9:03	0.012	0.039	-
9:04	0.003	0.008	9:04	0.010	0.039	-
9:05	0.005	0.008	9:05	0.009	0.040	-
9:06	0.008	0.008	9:06	0.008	0.040	-
9:07	0.005	0.008	9:07	0.006	0.041	-
9:08	0.005	0.008	9:08	0.005	0.040	-
9:09	0.005	0.008	9:09	0.004	0.025	-
9:10	0.005	0.008	9:10	0.003	0.017	-
9:11	0.007	0.008	9:11	0.002	0.015	-
9:12	0.007	0.009	9:12	0.002	0.013	-
9:13	0.008	0.009	9:13	0.002	0.011	-
9:14	0.012	0.009	9:14	0.002	0.009	-
9:15	0.011	0.008	9:15	0.001	0.007	-
9:16	0.025	0.008	9:16	0.001	0.006	-
9:17	0.011	0.008	9:17	0.001	0.005	-
9:18	0.008	0.008	9:18	0.001	0.004	-
9:19	0.007	0.009	9:19	0.001	0.003	-
9:20	0.005	0.009	9:20	0.001	0.003	-
9:21	0.008	0.009	9:21	0.001	0.002	-
9:22	0.008	0.009	9:22	0.001	0.002	-
9:23	0.007	0.009	9:23	0.001	0.002	-
9:24	0.008	0.009	9:24	0.001	0.001	-
9:25	0.011	0.010	9:25	0.001	0.001	-
9:26	0.005	0.009	9:26	0.001	0.001	-
9:27	0.005	0.009	9:27	0.001	0.001	-
9:28	0.007	0.009	9:28	0.000	0.001	-
9:29	0.008	0.009	9:29	0.000	0.001	-

PARTICULATE DATA						
Upwind			Downwind			Exceeds Particulate Alarm Limits
Time	Concentration (mg/m ³)	15-Minute Average	Time	Concentration (mg/m ³)	15-Minute Average	
9:30	0.005	0.009	9:30	0.000	0.001	-
9:31	0.016	0.008	9:31	0.000	0.001	-
9:32	0.005	0.008	9:32	0.001	0.001	-
9:33	0.003	0.007	9:33	0.001	0.001	-
9:34	0.022	0.008	9:34	0.000	0.001	-
9:35	0.016	0.009	9:35	0.000	0.001	-
9:36	0.008	0.009	9:36	0.001	0.001	-
9:37	0.005	0.009	9:37	0.002	0.001	-
9:38	0.005	0.009	9:38	0.001	0.001	-
9:39	0.006	0.008	9:39	0.001	0.001	-
9:40	0.007	0.008	9:40	0.001	0.001	-
9:41	0.005	0.008	9:41	0.001	0.001	-
9:42	0.005	0.008	9:42	0.002	0.001	-
9:43	0.004	0.008	9:43	0.003	0.001	-
9:44	0.006	0.008	9:44	0.005	0.001	-
9:45	0.004	0.008	9:45	0.007	0.002	-
9:46	0.007	0.007	9:46	0.007	0.002	-
9:47	0.004	0.007	9:47	0.006	0.003	-
9:48	0.004	0.007	9:48	0.006	0.003	-
9:49	0.004	0.006	9:49	0.005	0.003	-
9:50	0.003	0.005	9:50	0.005	0.004	-
9:51	0.003	0.005	9:51	0.011	0.004	-
9:52	0.002	0.005	9:52	0.011	0.005	-
9:53	0.002	0.004	9:53	0.005	0.005	-
9:54	0.002	0.004	9:54	0.004	0.005	-
9:55	0.002	0.004	9:55	0.004	0.005	-
9:56	0.002	0.004	9:56	0.004	0.006	-
9:57	0.005	0.004	9:57	0.003	0.006	-
9:58	0.003	0.004	9:58	0.003	0.006	-
9:59	0.002	0.003	9:59	0.002	0.006	-
10:00	0.003	0.003	10:00	0.001	0.005	-
10:01	0.005	0.003	10:01	0.001	0.005	-
10:02	0.002	0.003	10:02	0.001	0.004	-
10:03	0.002	0.003	10:03	0.001	0.004	-
10:04	0.001	0.003	10:04	0.000	0.004	-
10:05	0.001	0.002	10:05	0.000	0.003	-
10:06	0.001	0.002	10:06	0.000	0.003	-
10:07	0.001	0.002	10:07	0.000	0.002	-
10:08	0.002	0.002	10:08	0.000	0.002	-
10:09	0.002	0.002	10:09	0.000	0.001	-
10:10	0.002	0.002	10:10	0.000	0.001	-
10:11	0.001	0.002	10:11	0.000	0.001	-
10:12	0.001	0.002	10:12	0.000	0.001	-
10:13	0.001	0.002	10:13	0.001	0.000	-
10:14	0.004	0.002	10:14	0.000	0.000	-
10:15	0.003	0.002	10:15	0.000	0.000	-
10:16	0.002	0.002	10:16	0.000	0.000	-
10:17	0.002	0.002	10:17	0.000	0.000	-
10:18	0.001	0.002	10:18	0.000	0.000	-
10:19	0.002	0.002	10:19	0.000	0.000	-
10:20	0.002	0.002	10:20	0.000	0.000	-
10:21	0.002	0.002	10:21	0.000	0.000	-
10:22	0.002	0.002	10:22	0.000	0.000	-
10:23	0.002	0.002	10:23	0.000	0.000	-
10:24	0.002	0.002	10:24	0.000	0.000	-
10:25	0.002	0.002	10:25	0.000	0.000	-
10:26	0.002	0.002	10:26	0.000	0.000	-
10:27	0.002	0.002	10:27	0.000	0.000	-
10:28	0.002	0.002	10:28	0.000	0.000	-
10:29	0.002	0.002	10:29	0.000	0.000	-
10:30	0.003	0.002	10:30	0.000	0.000	-
10:31	0.003	0.002	10:31	0.000	0.000	-
10:32	0.003	0.002	10:32	0.000	0.000	-
10:33	0.005	0.002	10:33	0.000	0.000	-
10:34	0.003	0.002	10:34	0.000	0.000	-
10:35	0.003	0.003	10:35	0.000	0.000	-
10:36	0.002	0.003	10:36	0.000	0.000	-
10:37	0.004	0.003	10:37	0.000	0.000	-
10:38	0.004	0.003	10:38	0.000	0.000	-
10:39	0.004	0.003	10:39	0.000	0.000	-
10:40	0.002	0.003	10:40	0.000	0.000	-
10:41	0.002	0.003	10:41	0.000	0.000	-
10:42	0.002	0.003	10:42	0.000	0.000	-
10:43	0.001	0.003	10:43	0.000	0.000	-
10:44	0.001	0.003	10:44	0.000	0.000	-
10:45	0.002	0.003	10:45	0.000	0.000	-
10:46	0.002	0.003	10:46	0.000	0.000	-
10:47	0.002	0.003	10:47	0.000	0.000	-
10:48	0.001	0.002	10:48	0.000	0.000	-
10:49	0.001	0.002	10:49	0.000	0.000	-
10:50	0.001	0.002	10:50	0.000	0.000	-
10:51	0.002	0.002	10:51	0.000	0.000	-
10:52	0.003	0.002	10:52	0.000	0.000	-
10:53	0.003	0.002	10:53	0.000	0.000	-

PARTICULATE DATA						
Upwind			Downwind			Exceeds Particulate Alarm Limits
Time	Concentration (mg/m ³)	15-Minute Average	Time	Concentration (mg/m ³)	15-Minute Average	
10:54	0.003	0.002	10:54	0.000	0.000	-
10:55	0.003	0.002	10:55	0.000	0.000	-
10:56	0.003	0.002	10:56	0.000	0.000	-
10:57	0.005	0.002	10:57	0.000	0.000	-
10:58	0.003	0.002	10:58	0.000	0.000	-
10:59	0.003	0.002	10:59	0.000	0.000	-
11:00	0.003	0.003	11:00	0.000	0.000	-
11:01	0.002	0.003	11:01	0.000	0.000	-
11:02	0.003	0.003	11:02	0.000	0.000	-
11:03	0.002	0.003	11:03	0.000	0.000	-
11:04	0.002	0.003	11:04	0.001	0.000	-
11:05	0.003	0.003	11:05	0.000	0.000	-
11:06	0.002	0.003	11:06	0.000	0.000	-
11:07	0.002	0.003	11:07	0.000	0.000	-
11:08	0.001	0.003	11:08	0.000	0.000	-
11:09	0.001	0.003	11:09	0.000	0.000	-
11:10	0.001	0.002	11:10	0.000	0.000	-
11:11	0.002	0.002	11:11	0.000	0.000	-
11:12	0.002	0.002	11:12	0.000	0.000	-
11:13	0.002	0.002	11:13	0.000	0.000	-
11:14	0.001	0.002	11:14	0.000	0.000	-
11:15	0.001	0.002	11:15	0.000	0.000	-
11:16	0.002	0.002	11:16	0.000	0.000	-
11:17	0.001	0.002	11:17	0.000	0.000	-
11:18	0.001	0.002	11:18	0.000	0.000	-
11:19	0.001	0.002	11:19	0.000	0.000	-
11:20	0.001	0.001	11:20	0.000	0.000	-
11:21	0.001	0.001	11:21	0.000	0.000	-
11:22	0.002	0.001	11:22	0.000	0.000	-
11:23	0.001	0.001	11:23	0.000	0.000	-
11:24	0.001	0.001	11:24	0.000	0.000	-
11:25	0.001	0.001	11:25	0.000	0.000	-
11:26	0.001	0.001	11:26	0.000	0.000	-
11:27	0.001	0.001	11:27	0.001	0.000	-
11:28	0.001	0.001	11:28	0.001	0.000	-
11:29	0.001	0.001	11:29	0.000	0.000	-
11:30	0.002	0.001	11:30	0.000	0.000	-
11:31	0.001	0.001	11:31	0.000	0.000	-
11:32	0.001	0.001	11:32	0.000	0.000	-
11:33	0.001	0.001	11:33	0.000	0.000	-
11:34	0.001	0.001	11:34	0.000	0.000	-
11:35	0.001	0.001	11:35	0.000	0.000	-
11:36	0.002	0.001	11:36	0.000	0.000	-
11:37	0.001	0.001	11:37	0.000	0.000	-
11:38	0.001	0.001	11:38	0.000	0.000	-
11:39	0.001	0.001	11:39	0.000	0.000	-
11:40	0.001	0.001	11:40	0.000	0.000	-
11:41	0.002	0.001	11:41	0.000	0.000	-
11:42	0.002	0.001	11:42	0.000	0.000	-
11:43	0.001	0.001	11:43	0.000	0.000	-
11:44	0.002	0.001	11:44	0.000	0.000	-
11:45	0.001	0.001	11:45	0.000	0.000	-
11:46	0.001	0.001	11:46	0.000	0.000	-
11:47	0.001	0.001	11:47	0.000	0.000	-
11:48	0.001	0.001	11:48	0.000	0.000	-
11:49	0.001	0.001	11:49	0.000	0.000	-
11:50	0.001	0.001	11:50	0.000	0.000	-
11:51	0.001	0.001	11:51	0.000	0.000	-
11:52	0.001	0.001	11:52	0.000	0.000	-
11:53	0.001	0.001	11:53	0.000	0.000	-
11:54	0.002	0.001	11:54	0.000	0.000	-
11:55	0.002	0.001	11:55	0.000	0.000	-
11:56	0.001	0.001	11:56	0.000	0.000	-
11:57	0.008	0.002	11:57	0.000	0.000	-
11:58	0.007	0.002	11:58	0.000	0.000	-
11:59	0.004	0.002	11:59	0.000	0.000	-
12:00	0.007	0.003	12:00	0.000	0.000	-
12:01	0.005	0.003	12:01	0.000	0.000	-
12:02	0.003	0.003	12:02	0.000	0.000	-
12:03	0.004	0.003	12:03	0.000	0.000	-
12:04	0.003	0.003	12:04	0.000	0.000	-
12:05	0.002	0.003	12:05	0.000	0.000	-
12:06	0.003	0.004	12:06	0.000	0.000	-
12:07	0.004	0.004	12:07	0.000	0.000	-
12:08	0.003	0.004	12:08	0.000	0.000	-
12:09	0.003	0.004	12:09	0.000	0.000	-
12:10	0.002	0.004	12:10	0.000	0.000	-
12:11	0.003	0.004	12:11	0.000	0.000	-
12:12	0.003	0.004	12:12	0.000	0.000	-
12:13	0.017	0.004	12:13	0.000	0.000	-
12:14	0.016	0.005	12:14	0.000	0.000	-
12:15	0.009	0.005	12:15	0.000	0.000	-
12:16	0.004	0.005	12:16	0.000	0.000	-
12:17	0.007	0.006	12:17	0.000	0.000	-

PARTICULATE DATA						
Upwind			Downwind			Exceeds Particulate Alarm Limits
Time	Concentration (mg/m ³)	15-Minute Average	Time	Concentration (mg/m ³)	15-Minute Average	
12:18	0.009	0.006	12:18	0.000	0.000	-
12:19	0.01	0.006	12:19	0.000	0.000	-
12:20	0.006	0.007	12:20	0.000	0.000	-
12:21	0.012	0.007	12:21	0.000	0.000	-
12:22	0.007	0.007	12:22	0.000	0.000	-
12:23	0.004	0.007	12:23	0.000	0.000	-
12:24	0.007	0.008	12:24	0.000	0.000	-
12:25	0.006	0.008	12:25	0.000	0.000	-
12:26	0.005	0.008	12:26	0.000	0.000	-
12:27	0.004	0.008	12:27	0.000	0.000	-
12:28	0.003	0.007	12:28	0.000	0.000	-
12:29	0.005	0.007	12:29	0.000	0.000	-
12:30	0.003	0.006	12:30	0.000	0.000	-
12:31	0.002	0.006	12:31	0.000	0.000	-
12:32	0.005	0.006	12:32	0.000	0.000	-
12:33	0.034	0.008	12:33	0.000	0.000	-
12:34	0.023	0.008	12:34	0.000	0.000	-
12:35	0.009	0.009	12:35	0.000	0.000	-
12:36	0.008	0.008	12:36	0.000	0.000	-
12:37	0.019	0.009	12:37	0.000	0.000	-
12:38	0.018	0.010	12:38	0.000	0.000	-
12:39	0.017	0.011	12:39	0.000	0.000	-
12:40	0.015	0.011	12:40	0.000	0.000	-
12:41	0.012	0.012	12:41	0.001	0.000	-
12:42	0.01	0.012	12:42	0.001	0.000	-
12:43	0.008	0.013	12:43	0.001	0.000	-
12:44	0.007	0.013	12:44	0.000	0.000	-
12:45	0.006	0.013	12:45	0.000	0.000	-
12:46	0.006	0.013	12:46	0.000	0.000	-
12:47	0.006	0.013	12:47	0.000	0.000	-
12:48	0.005	0.011	12:48	0.000	0.000	-
12:49	0.004	0.010	12:49	0.000	0.000	-
12:50	0.003	0.010	12:50	0.000	0.000	-
12:51	0.002	0.009	12:51	0.000	0.000	-
12:52	0.003	0.008	12:52	0.000	0.000	-
12:53	0.002	0.007	12:53	0.000	0.000	-
12:54	0.002	0.006	12:54	0.000	0.000	-
12:55	0.004	0.005	12:55	0.000	0.000	-
12:56	0.004	0.005	12:56	0.000	0.000	-
12:57	0.004	0.004	12:57	0.000	0.000	-
12:58	0.004	0.004	12:58	0.000	0.000	-
12:59	0.004	0.004	12:59	0.000	0.000	-
13:00	0.003	0.004	13:00	0.000	0.000	-
13:01	0.003	0.004	13:01	0.000	0.000	-
13:02	0.003	0.003	13:02	0.000	0.000	-
13:03	0.003	0.003	13:03	0.000	0.000	-
13:04	0.004	0.003	13:04	0.000	0.000	-
13:05	0.005	0.003	13:05	0.000	0.000	-
13:06	0.007	0.004	13:06	0.000	0.000	-
13:07	0.006	0.004	13:07	0.000	0.000	-
13:08	0.006	0.004	13:08	0.000	0.000	-
13:09	0.006	0.004	13:09	0.006	0.000	-
13:10	0.006	0.005	13:10	0.015	0.001	-
13:11	0.006	0.005	13:11	0.023	0.003	-
13:12	0.011	0.005	13:12	0.020	0.004	-
13:13	0.012	0.006	13:13	0.014	0.005	-
13:14	0.01	0.006	13:14	0.011	0.006	-
13:15	0.009	0.006	13:15	0.007	0.006	-
13:16	0.009	0.007	13:16	0.005	0.007	-
13:17	0.004	0.007	13:17	0.004	0.007	-
13:18	0.004	0.007	13:18	0.003	0.007	-
13:19	0.005	0.007	13:19	0.003	0.007	-
13:20	0.009	0.007	13:20	0.002	0.008	-
13:21	0.005	0.007	13:21	0.001	0.008	-
13:22	0.006	0.007	13:22	0.001	0.008	-
13:23	0.005	0.007	13:23	0.001	0.008	-
13:24	0.002	0.007	13:24	0.000	0.007	-
13:25	0.002	0.007	13:25	0.000	0.006	-

PARTICULATE DATA						
Upwind			Downwind			Exceeds Particulate Alarm Limits
Time	Concentration (mg/m ³)	15-Minute Average	Time	Concentration (mg/m ³)	15-Minute Average	
13:26	0.001	0.006	13:26	0.000	0.005	-
13:27	0.002	0.006	13:27	0.000	0.003	-
13:28	0.002	0.010	13:28	0.000	0.003	-
13:29	0.059	0.014	13:29	0.001	0.002	-
13:30	0.029	0.015	13:30	0.002	0.002	-
13:31	0.011	0.015	13:31	0.002	0.001	-
13:32	0.011	0.016	13:32	0.002	0.001	-
13:33	0.013	0.016	13:33	0.001	0.001	-
13:34	0.016	0.017	13:34	0.001	0.001	-
13:35	0.014	0.017	13:35	0.001	0.001	-
13:36	0.009	0.017	13:36	0.001	0.001	-
13:37	0.01	0.018	13:37	0.001	0.001	-
13:38	0.011	0.018	13:38	0.003	0.001	-
13:39	0.013	0.019	13:39	0.005	0.001	-
13:40	0.015	0.020	13:40	0.004	0.002	-
13:41	0.014	0.021	13:41	0.004	0.002	-
13:42	0.007	0.021	13:42	0.004	0.002	-
13:43	0.008	0.016	13:43	0.003	0.002	-
13:44	0.008	0.013	13:44	0.002	0.002	-
13:45	0.013	0.012	13:45	0.002	0.002	-
13:46	0.013	0.012	13:46	0.002	0.002	-
13:47	0.009	0.012	13:47	0.001	0.002	-
13:48	0.007	0.011	13:48	0.001	0.002	-
13:49	0.009	0.011	13:49	0.001	0.002	-
13:50	0.01	0.010	13:50	0.001	0.002	-
13:51	0.009	0.010	13:51	0.000	0.002	-
13:52	0.006	0.010	13:52	0.000	0.002	-
13:53	0.009	0.010	13:53	0.000	0.002	-
13:54	0.007	0.010	13:54	0.000	0.002	-
13:55	0.005	0.009	13:55	0.000	0.001	-
13:56	0.006	0.008	13:56	0.000	0.001	-
13:57	0.007	0.008	13:57	0.000	0.001	-
13:58	0.006	0.008	13:58	0.000	0.001	-
13:59	0.006	0.008	13:59	0.000	0.001	-
14:00	0.005	0.008	14:00	0.000	0.000	-
14:01	0.004	0.007	14:01	0.000	0.000	-
14:02	0.003	0.007	14:02	0.000	0.000	-
14:03	0.004	0.006	14:03	0.012	0.001	-
14:04	0.005	0.006	14:04	0.022	0.002	-
14:05	0.004	0.006	14:05	0.014	0.003	-
14:06	0.003	0.005	14:06	0.009	0.004	-
14:07	0.003	0.005	14:07	0.009	0.004	-
14:08	0.003	0.005	14:08	0.037	0.007	-
14:09	0.003	0.004	14:09	0.038	0.009	-
14:10	0.002	0.004	14:10	0.026	0.011	-
14:11	0.002	0.004	14:11	0.019	0.012	-
14:12	0.002	0.004	14:12	0.013	0.013	-
14:13	0.002	0.003	14:13	0.013	0.014	-
14:14	0.002	0.003	14:14	0.012	0.015	-
14:15	0.002	0.003	14:15	0.009	0.016	-
14:16	0.002	0.003	14:16	0.010	0.016	-
14:17	0.002	0.003	14:17	0.012	0.017	-
14:18	0.002	0.003	14:18	0.011	0.017	-
14:19	0.001	0.002	14:19	0.010	0.016	-
14:20	0.001	0.002	14:20	0.012	0.016	-
14:21	0.001	0.002	14:21	0.021	0.017	-
14:22	0.001	0.002	14:22	0.015	0.017	-
14:23	0.001	0.002	14:23	0.009	0.015	-
14:24	0.001	0.002	14:24	0.005	0.013	-
14:25	0.001	0.002	14:25	0.006	0.012	-
14:26	0.001	0.001	14:26	0.005	0.011	-
14:27	0.001	0.001	14:27	0.005	0.010	-
14:28	0.001	0.001	14:28	0.004	0.010	-
14:29	0.001	0.001	14:29	0.005	0.009	-
14:30	0.001	0.001	14:30	0.004	0.009	-
14:31	0.001	0.001	14:31	0.003	0.008	-
14:32	0.001	0.001	14:32	0.002	0.008	-
14:33	0.001	0.001	14:33	0.001	0.007	-
14:34	0.001	0.001	14:34	0.000	0.006	-
14:35	0.001	0.001	14:35	0.000	0.006	-
14:36	0.001	0.001	14:36	0.000	0.004	-
14:37	0.001	0.001	14:37	0.000	0.003	-
14:38	0.000	0.001	14:38	0.000	0.003	-
14:39	0.000	0.001	14:39	0.000	0.002	-
14:40	0.023	0.002	14:40	0.000	0.002	-
14:41	0.004	0.003	14:41	0.000	0.002	-
14:42	0.003	0.003	14:42	0.000	0.001	-
14:43	0.088	0.008	14:43	0.000	0.001	-
14:44	0.033	0.011	14:44	0.000	0.001	-

PARTICULATE DATA						
Upwind			Downwind			Exceeds Particulate Alarm Limits
Time	Concentration (mg/m ³)	15-Minute Average	Time	Concentration (mg/m ³)	15-Minute Average	
14:45	0.004	0.011	14:45	0.000	0.000	-
14:46	0.102	0.018	14:46	0.000	0.000	-
14:47	0.016	0.019	14:47	0.000	0.000	-
14:48	0.005	0.019	14:48	0.000	0.000	-
14:49	0.003	0.019	14:49	0.000	0.000	-
14:50	0.004	0.019	14:50	0.000	0.000	-
14:51	0.004	0.019	14:51	0.000	0.000	-
14:52	0.003	0.019	14:52	0.000	0.000	-
14:53	0.002	0.020	14:53	0.000	0.000	-
14:54	0.006	0.020	14:54	0.000	0.000	-
14:55	0.052	0.022	14:55	0.000	0.000	-
14:56	0.018	0.023	14:56	0.000	0.000	-
14:57	0.004	0.023	14:57	0.000	0.000	-
14:58	0.006	0.017	14:58	0.000	0.000	-
14:59	0.012	0.016	14:59	0.000	0.000	-
15:00	0.01	0.016	15:00	0.000	0.000	-
15:01	0.039	0.012	15:01	0.000	0.000	-
15:02	0.011	0.012	15:02	0.000	0.000	-
15:03	0.011	0.012	15:03	0.000	0.000	-
15:04	0.01	0.013	15:04	0.000	0.000	-
15:05	0.01	0.013	15:05	0.000	0.000	-
15:06	0.01	0.014	15:06	0.000	0.000	-
15:07	0.009	0.014	15:07	0.000	0.000	-
15:08	0.01	0.015	15:08	0.000	0.000	-
15:09	0.01	0.015	15:09	0.000	0.000	-
15:10	0.01	0.012	15:10	0.000	0.000	-
15:11	-	-	15:11	0.000	0.000	-
15:12	-	-	15:12	0.007	0.000	-
15:13	-	-	15:13	0.005	0.001	-
15:14	-	-	15:14	0.002	0.001	-
15:15	-	-	15:15	0.001	0.001	-
15:16	-	-	15:16	0.001	0.001	-
15:17	-	-	15:17	0.016	0.002	-
15:18	-	-	15:18	0.014	0.003	-

Saturday, June 20, 2026						
Number of Instances Where Downwind VOCs Exceeds Upwind VOCs + 5 =						0
Number of Comparable Data Points =						410
Start Time:						8:05
End Time:						15:18
PID DATA						
Upwind			Downwind			Exceeds VOCs Alarm Limits
Time	VOC (ppm)	15-Minute Average	Time	VOC (ppm)	15-Minute Average	
8:05	0.0		8:05			
8:06	0.0		8:06			
8:07	0.0		8:07			
8:08	0.0		8:08	0.1		
8:09	0.0		8:09	0.0		
8:10	0.0		8:10	0.0		
8:11	0.0		8:11	0.0		
8:12	0.0		8:12	0.0		
8:13	0.0		8:13	0.0		
8:14	0.0		8:14	0.0		
8:15	0.0		8:15	0.0		
8:16	0.0		8:16	0.0		
8:17	0.0		8:17	0.0		
8:18	0.0		8:18	0.0		
8:19	0.0	0.0	8:19	0.0		
8:20	0.0	0.0	8:20	0.0		
8:21	0.0	0.0	8:21	0.0		
8:22	0.0	0.0	8:22	0.0		
8:23	0.0	0.0	8:23	0.0		
8:24	0.0	0.0	8:24	0.0		
8:25	0.0	0.0	8:25	0.0		
8:26	0.0	0.0	8:26	0.0		
8:27	0.1	0.0	8:27	0.0		
8:28	0.1	0.0	8:28	0.0		
8:29	0.1	0.0	8:29	0.0	0.0	-
8:30	0.1	0.0	8:30	0.0	0.0	-
8:31	0.1	0.0	8:31	0.0	0.0	-
8:32	0.1	0.0	8:32	0.0	0.0	-
8:33	0.1	0.0	8:33	0.0	0.0	-
8:34	0.1	0.1	8:34	0.0	0.0	-
8:35	0.1	0.1	8:35	0.0	0.0	-
8:36	0.2	0.1	8:36	0.0	0.0	-
8:37	0.2	0.1	8:37	0.0	0.0	-
8:38	0.3	0.1	8:38	0.0	0.0	-
8:39	0.3	0.1	8:39	0.0	0.0	-
8:40	0.3	0.1	8:40	0.0	0.0	-
8:41	0.2	0.2	8:41	0.0	0.0	-
8:42	0.2	0.2	8:42	0.0	0.0	-
8:43	0.2	0.2	8:43	0.0	0.0	-
8:44	0.2	0.2	8:44	0.0	0.0	-
8:45	0.2	0.2	8:45	0.0	0.0	-
8:46	0.2	0.2	8:46	0.0	0.0	-
8:47	0.2	0.2	8:47	0.0	0.0	-
8:48	0.2	0.2	8:48	0.0	0.0	-
8:49	0.2	0.2	8:49	0.0	0.0	-
8:50	0.2	0.2	8:50	0.0	0.0	-
8:51	0.2	0.2	8:51	0.0	0.0	-
8:52	0.2	0.2	8:52	0.0	0.0	-
8:53	0.2	0.2	8:53	0.0	0.0	-
8:54	0.2	0.2	8:54	0.0	0.0	-
8:55	0.2	0.2	8:55	0.0	0.0	-
8:56	0.2	0.2	8:56	0.0	0.0	-
8:57	0.2	0.2	8:57	0.0	0.0	-
8:58	0.2	0.2	8:58	0.0	0.0	-
8:59	0.2	0.2	8:59	0.0	0.0	-
9:00	0.2	0.2	9:00	0.0	0.0	-
9:01	0.3	0.2	9:01	0.0	0.0	-
9:02	0.2	0.2	9:02	0.0	0.0	-
9:03	0.2	0.2	9:03	0.0	0.0	-
9:04	0.2	0.2	9:04	0.0	0.0	-
9:05	0.2	0.2	9:05	0.0	0.0	-
9:06	0.2	0.2	9:06	0.0	0.0	-
9:07	0.2	0.2	9:07	0.0	0.0	-
9:08	0.2	0.2	9:08	0.0	0.0	-
9:09	0.2	0.2	9:09	0.0	0.0	-
9:10	0.2	0.2	9:10	0.0	0.0	-
9:11	0.2	0.2	9:11	0.0	0.0	-
9:12	0.2	0.2	9:12	0.0	0.0	-
9:13	0.2	0.2	9:13	0.0	0.0	-
9:14	0.3	0.2	9:14	0.0	0.0	-
9:15	0.3	0.2	9:15	0.0	0.0	-
9:16	0.2	0.2	9:16	0.0	0.0	-
9:17	0.2	0.2	9:17	0.0	0.0	-
9:18	0.2	0.2	9:18	0.0	0.0	-
9:19	0.2	0.2	9:19	0.0	0.0	-
9:20	0.2	0.2	9:20	0.0	0.0	-
9:21	0.2	0.2	9:21	0.0	0.0	-
9:22	0.3	0.2	9:22	0.0	0.0	-

PID DATA						
Upwind			Downwind			Exceeds VOCs Alarm Limits
Time	VOC (ppm)	15-Minute Average	Time	VOC (ppm)	15-Minute Average	
9:23	0.2	0.2	9:23	0.0	0.0	-
9:24	0.3	0.2	9:24	0.0	0.0	-
9:25	0.3	0.2	9:25	0.0	0.0	-
9:26	0.3	0.2	9:26	0.0	0.0	-
9:27	0.3	0.2	9:27	0.0	0.0	-
9:28	0.3	0.3	9:28	0.0	0.0	-
9:29	0.3	0.3	9:29	0.0	0.0	-
9:30	0.3	0.3	9:30	0.0	0.0	-
9:31	0.3	0.3	9:31	0.0	0.0	-
9:32	0.3	0.3	9:32	0.0	0.0	-
9:33	0.3	0.3	9:33	0.0	0.0	-
9:34	0.3	0.3	9:34	0.0	0.0	-
9:35	0.3	0.3	9:35	0.0	0.0	-
9:36	0.3	0.3	9:36	0.0	0.0	-
9:37	0.3	0.3	9:37	0.0	0.0	-
9:38	0.3	0.3	9:38	0.0	0.0	-
9:39	0.3	0.3	9:39	0.0	0.0	-
9:40	0.3	0.3	9:40	0.0	0.1	-
9:41	0.3	0.3	9:41	0.0	0.1	-
9:42	0.3	0.3	9:42	0.0	0.1	-
9:43	0.3	0.3	9:43	0.3	0.1	-
9:44	0.3	0.3	9:44	0.3	0.1	-
9:45	0.3	0.3	9:45	0.3	0.2	-
9:46	0.3	0.3	9:46	0.3	0.2	-
9:47	0.3	0.3	9:47	0.3	0.2	-
9:48	0.3	0.3	9:48	0.3	0.2	-
9:49	0.3	0.3	9:49	0.3	0.2	-
9:50	0.2	0.3	9:50	0.3	0.2	-
9:51	0.2	0.3	9:51	0.3	0.2	-
9:52	0.2	0.3	9:52	0.3	0.2	-
9:53	0.2	0.3	9:53	0.0	0.2	-
9:54	0.3	0.3	9:54	0.0	0.2	-
9:55	0.3	0.3	9:55	0.0	0.1	-
9:56	0.3	0.3	9:56	0.0	0.1	-
9:57	0.3	0.3	9:57	0.0	0.1	-
9:58	0.3	0.3	9:58	0.0	0.1	-
9:59	0.3	0.3	9:59	0.0	0.1	-
10:00	0.2	0.3	10:00	0.0	0.0	-
10:01	0.2	0.3	10:01	0.0	0.0	-
10:02	0.2	0.3	10:02	0.0	0.0	-
10:03	0.2	0.2	10:03	0.0	0.0	-
10:04	0.2	0.2	10:04	0.0	0.0	-
10:05	0.2	0.2	10:05	0.0	0.0	-
10:06	0.2	0.2	10:06	0.0	0.0	-
10:07	0.2	0.2	10:07	0.0	0.0	-
10:08	0.2	0.2	10:08	0.0	0.0	-
10:09	0.3	0.2	10:09	0.0	0.0	-
10:10	0.3	0.2	10:10	0.0	0.0	-
10:11	0.3	0.2	10:11	0.0	0.0	-
10:12	0.3	0.2	10:12	0.0	0.0	-
10:13	0.3	0.2	10:13	0.0	0.0	-
10:14	0.3	0.2	10:14	0.0	0.0	-
10:15	0.3	0.2	10:15	0.0	0.0	-
10:16	0.3	0.3	10:16	0.0	0.0	-
10:17	0.3	0.3	10:17	0.0	0.0	-
10:18	0.3	0.3	10:18	0.0	0.0	-
10:19	0.3	0.3	10:19	0.0	0.0	-
10:20	0.3	0.3	10:20	0.0	0.0	-
10:21	0.3	0.3	10:21	0.0	0.0	-
10:22	0.3	0.3	10:22	0.0	0.0	-
10:23	0.3	0.3	10:23	0.0	0.1	-
10:24	0.3	0.3	10:24	0.1	0.1	-
10:25	0.3	0.3	10:25	0.2	0.1	-
10:26	0.3	0.3	10:26	0.2	0.1	-
10:27	0.3	0.3	10:27	0.2	0.1	-
10:28	0.3	0.3	10:28	0.2	0.1	-
10:29	0.3	0.3	10:29	0.2	0.1	-
10:30	0.3	0.3	10:30	0.2	0.2	-
10:31	0.3	0.3	10:31	0.2	0.2	-
10:32	0.3	0.3	10:32	0.2	0.2	-
10:33	0.3	0.3	10:33	0.2	0.2	-
10:34	0.3	0.3	10:34	0.2	0.2	-
10:35	0.3	0.3	10:35	0.2	0.2	-
10:36	0.3	0.3	10:36	0.2	0.2	-
10:37	0.3	0.3	10:37	0.2	0.2	-
10:38	0.3	0.3	10:38	0.2	0.2	-
10:39	0.3	0.3	10:39	0.2	0.2	-
10:40	0.3	0.3	10:40	0.2	0.2	-
10:41	0.3	0.3	10:41	0.2	0.2	-
10:42	0.3	0.3	10:42	0.2	0.2	-
10:43	0.3	0.3	10:43	0.2	0.2	-
10:44	0.3	0.3	10:44	0.2	0.2	-
10:45	0.3	0.3	10:45	0.2	0.2	-
10:46	0.3	0.3	10:46	0.2	0.2	-

PID DATA						
Upwind			Downwind			Exceeds VOCs Alarm Limits
Time	VOC (ppm)	15-Minute Average	Time	VOC (ppm)	15-Minute Average	
10:47	0.3	0.3	10:47	0.2	0.2	-
10:48	0.3	0.3	10:48	0.2	0.2	-
10:49	0.3	0.3	10:49	0.2	0.2	-
10:50	0.3	0.3	10:50	0.2	0.2	-
10:51	0.3	0.3	10:51	0.2	0.2	-
10:52	0.3	0.3	10:52	0.2	0.2	-
10:53	0.3	0.3	10:53	0.2	0.2	-
10:54	0.3	0.3	10:54	0.2	0.2	-
10:55	0.0	0.3	10:55	0.1	0.2	-
10:56	0.0	0.3	10:56	0.1	0.2	-
10:57	0.0	0.2	10:57	0.1	0.1	-
10:58	0.0	0.2	10:58	0.1	0.1	-
10:59	0.0	0.2	10:59	0.1	0.1	-
11:00	0.0	0.2	11:00	0.1	0.1	-
11:01	0.0	0.2	11:01	0.1	0.1	-
11:02	0.0	0.1	11:02	0.1	0.1	-
11:03	0.0	0.1	11:03	0.1	0.1	-
11:04	0.0	0.1	11:04	0.1	0.1	-
11:05	0.0	0.1	11:05	0.1	0.1	-
11:06	0.3	0.1	11:06	0.1	0.1	-
11:07	0.3	0.1	11:07	0.1	0.1	-
11:08	0.3	0.1	11:08	0.1	0.1	-
11:09	0.3	0.1	11:09	0.2	0.1	-
11:10	0.3	0.1	11:10	0.2	0.1	-
11:11	0.3	0.1	11:11	0.2	0.2	-
11:12	0.3	0.1	11:12	0.2	0.2	-
11:13	0.3	0.2	11:13	0.2	0.2	-
11:14	0.3	0.2	11:14	0.2	0.2	-
11:15	0.3	0.2	11:15	0.2	0.2	-
11:16	0.1	0.2	11:16	0.2	0.2	-
11:17	0.1	0.2	11:17	0.2	0.2	-
11:18	0.1	0.2	11:18	0.2	0.2	-
11:19	0.1	0.2	11:19	0.2	0.2	-
11:20	0.1	0.2	11:20	0.2	0.2	-
11:21	0.1	0.2	11:21	0.2	0.2	-
11:22	0.1	0.2	11:22	0.2	0.2	-
11:23	0.1	0.2	11:23	0.2	0.2	-
11:24	0.1	0.2	11:24	0.1	0.2	-
11:25	0.1	0.2	11:25	0.1	0.2	-
11:26	0.1	0.2	11:26	0.1	0.1	-
11:27	0.1	0.1	11:27	0.1	0.1	-
11:28	0.1	0.1	11:28	0.1	0.1	-
11:29	0.1	0.1	11:29	0.1	0.1	-
11:30	0.1	0.1	11:30	0.1	0.1	-
11:31	0.1	0.1	11:31	0.1	0.1	-
11:32	0.1	0.1	11:32	0.1	0.1	-
11:33	0.1	0.1	11:33	0.1	0.1	-
11:34	0.1	0.1	11:34	0.1	0.1	-
11:35	0.3	0.1	11:35	0.1	0.1	-
11:36	0.3	0.1	11:36	0.1	0.1	-
11:37	0.3	0.1	11:37	0.1	0.1	-
11:38	0.3	0.2	11:38	0.1	0.1	-
11:39	0.3	0.2	11:39	0.1	0.1	-
11:40	0.3	0.2	11:40	0.1	0.1	-
11:41	0.3	0.2	11:41	0.1	0.1	-
11:42	0.3	0.2	11:42	0.1	0.1	-
11:43	0.3	0.2	11:43	0.1	0.1	-
11:44	0.3	0.2	11:44	0.1	0.1	-
11:45	0.3	0.2	11:45	0.1	0.1	-
11:46	0.3	0.3	11:46	0.1	0.1	-
11:47	0.3	0.3	11:47	0.1	0.1	-
11:48	0.3	0.3	11:48	0.1	0.1	-
11:49	0.3	0.3	11:49	0.1	0.1	-
11:50	0.3	0.3	11:50	0.1	0.1	-
11:51	0.3	0.3	11:51	0.1	0.1	-
11:52	0.3	0.3	11:52	0.1	0.1	-
11:53	0.3	0.3	11:53	0.1	0.1	-
11:54	0.3	0.3	11:54	0.1	0.1	-
11:55	0.3	0.3	11:55	0.1	0.1	-
11:56	0.3	0.3	11:56	0.1	0.1	-
11:57	0.3	0.3	11:57	0.1	0.1	-
11:58	0.3	0.3	11:58	0.1	0.1	-
11:59	0.3	0.3	11:59	0.1	0.1	-
12:00	0.3	0.3	12:00	0.1	0.1	-
12:01	0.3	0.3	12:01	0.1	0.1	-
12:02	0.3	0.3	12:02	0.1	0.1	-
12:03	0.3	0.3	12:03	0.1	0.1	-
12:04	0.2	0.3	12:04	0.1	0.1	-
12:05	0.3	0.3	12:05	0.1	0.1	-
12:06	0.4	0.3	12:06	0.1	0.1	-
12:07	0.4	0.3	12:07	0.1	0.1	-
12:08	0.4	0.3	12:08	0.1	0.1	-
12:09	0.4	0.3	12:09	0.1	0.1	-
12:10	0.3	0.3	12:10	0.1	0.1	-

PID DATA						
Upwind			Downwind			Exceeds VOCs Alarm Limits
Time	VOC (ppm)	15-Minute Average	Time	VOC (ppm)	15-Minute Average	
12:11	0.3	0.3	12:11	0.1	0.1	-
12:12	0.3	0.3	12:12	0.1	0.1	-
12:13	0.4	0.3	12:13	0.1	0.1	-
12:14	0.4	0.3	12:14	0.1	0.1	-
12:15	0.4	0.3	12:15	0.1	0.1	-
12:16	0.4	0.3	12:16	0.1	0.1	-
12:17	0.4	0.4	12:17	0.1	0.1	-
12:18	0.4	0.4	12:18	0.1	0.1	-
12:19	0.4	0.4	12:19	0.1	0.1	-
12:20	0.3	0.4	12:20	0.1	0.1	-
12:21	0.3	0.4	12:21	0.1	0.1	-
12:22	0.3	0.4	12:22	0.1	0.1	-
12:23	0.3	0.4	12:23	0.1	0.1	-
12:24	0.3	0.3	12:24	0.1	0.1	-
12:25	0.2	0.3	12:25	0.1	0.1	-
12:26	0.2	0.3	12:26	0.1	0.1	-
12:27	0.2	0.3	12:27	0.1	0.1	-
12:28	0.3	0.3	12:28	0.1	0.1	-
12:29	0.3	0.3	12:29	0.1	0.1	-
12:30	0.3	0.3	12:30	0.1	0.1	-
12:31	0.3	0.3	12:31	0.1	0.1	-
12:32	0.3	0.3	12:32	0.1	0.1	-
12:33	0.3	0.3	12:33	0.1	0.1	-
12:34	0.3	0.3	12:34	0.1	0.1	-
12:35	0.3	0.3	12:35	0.1	0.1	-
12:36	0.3	0.3	12:36	0.1	0.1	-
12:37	0.3	0.3	12:37	0.1	0.1	-
12:38	0.3	0.3	12:38	0.1	0.1	-
12:39	0.3	0.3	12:39	0.1	0.1	-
12:40	0.4	0.3	12:40	0.1	0.1	-
12:41	0.4	0.3	12:41	0.1	0.1	-
12:42	0.4	0.3	12:42	0.1	0.1	-
12:43	0.3	0.3	12:43	0.1	0.1	-
12:44	0.3	0.3	12:44	0.1	0.1	-
12:45	0.3	0.3	12:45	0.1	0.1	-
12:46	0.3	0.3	12:46	0.1	0.1	-
12:47	0.3	0.3	12:47	0.1	0.1	-
12:48	0.3	0.3	12:48	0.2	0.1	-
12:49	0.3	0.3	12:49	0.2	0.1	-
12:50	0.3	0.3	12:50	0.2	0.1	-
12:51	0.0	0.3	12:51	0.2	0.1	-
12:52	0.0	0.3	12:52	0.2	0.2	-
12:53	0.0	0.3	12:53	0.2	0.2	-
12:54	0.0	0.2	12:54	0.2	0.2	-
12:55	0.0	0.2	12:55	0.2	0.2	-
12:56	0.0	0.2	12:56	0.2	0.2	-
12:57	0.0	0.2	12:57	0.2	0.2	-
12:58	0.0	0.1	12:58	0.2	0.2	-
12:59	0.4	0.1	12:59	0.2	0.2	-
13:00	0.4	0.2	13:00	0.2	0.2	-
13:01	0.4	0.2	13:01	0.2	0.2	-
13:02	0.4	0.2	13:02	0.2	0.2	-
13:03	0.4	0.2	13:03	0.2	0.2	-
13:04	0.4	0.2	13:04	0.2	0.2	-
13:05	0.4	0.2	13:05	0.2	0.2	-
13:06	0.4	0.2	13:06	0.2	0.2	-
13:07	0.4	0.2	13:07	0.2	0.2	-
13:08	0.4	0.3	13:08	0.2	0.2	-
13:09	0.4	0.3	13:09	0.2	0.2	-
13:10	0.4	0.3	13:10	0.2	0.2	-
13:11	0.4	0.3	13:11	0.2	0.2	-
13:12	0.4	0.4	13:12	0.2	0.2	-
13:13	0.4	0.4	13:13	0.2	0.2	-
13:14	0.4	0.4	13:14	0.2	0.2	-
13:15	0.2	0.4	13:15	0.2	0.2	-
13:16	0.4	0.4	13:16	0.2	0.2	-
13:17	0.4	0.4	13:17	0.2	0.2	-
13:18	0.4	0.4	13:18	0.2	0.2	-
13:19	0.4	0.4	13:19	0.2	0.2	-
13:20	0.4	0.4	13:20	0.2	0.2	-
13:21	0.4	0.4	13:21	0.2	0.2	-
13:22	0.4	0.4	13:22	0.2	0.2	-
13:23	0.4	0.4	13:23	0.2	0.2	-
13:24	0.4	0.4	13:24	0.2	0.2	-
13:25	0.4	0.4	13:25	0.2	0.2	-
13:26	0.4	0.4	13:26	0.2	0.2	-

PID DATA						
Upwind			Downwind			Exceeds VOCs Alarm Limits
Time	VOC (ppm)	15-Minute Average	Time	VOC (ppm)	15-Minute Average	
13:27	0.5	0.4	13:27	0.2	0.2	-
13:28	0.5	0.4	13:28	0.2	0.2	-
13:29	0.5	0.4	13:29	0.2	0.2	-
13:30	0.5	0.4	13:30	0.2	0.2	-
13:31	0.5	0.4	13:31	0.2	0.2	-
13:32	0.5	0.4	13:32	0.2	0.2	-
13:33	0.6	0.5	13:33	0.2	0.2	-
13:34	0.5	0.5	13:34	0.3	0.2	-
13:35	0.5	0.5	13:35	0.3	0.2	-
13:36	0.5	0.5	13:36	0.3	0.2	-
13:37	0.5	0.5	13:37	0.3	0.2	-
13:38	0.5	0.5	13:38	0.3	0.2	-
13:39	0.5	0.5	13:39	0.3	0.2	-
13:40	0.5	0.5	13:40	0.3	0.2	-
13:41	0.5	0.5	13:41	0.3	0.3	-
13:42	0.5	0.5	13:42	0.3	0.3	-
13:43	0.5	0.5	13:43	0.3	0.3	-
13:44	0.5	0.5	13:44	0.3	0.3	-
13:45	0.4	0.5	13:45	0.3	0.3	-
13:46	0.4	0.5	13:46	0.3	0.3	-
13:47	0.4	0.5	13:47	0.3	0.3	-
13:48	0.4	0.5	13:48	0.3	0.3	-
13:49	0.4	0.5	13:49	0.3	0.3	-
13:50	0.4	0.5	13:50	0.3	0.3	-
13:51	0.4	0.5	13:51	0.3	0.3	-
13:52	0.4	0.4	13:52	0.2	0.3	-
13:53	0.4	0.4	13:53	0.3	0.3	-
13:54	0.4	0.4	13:54	0.4	0.3	-
13:55	0.4	0.4	13:55	0.4	0.3	-
13:56	0.4	0.4	13:56	0.4	0.3	-
13:57	0.4	0.4	13:57	0.4	0.3	-
13:58	0.4	0.4	13:58	0.3	0.3	-
13:59	0.4	0.4	13:59	0.3	0.3	-
14:00	0.4	0.4	14:00	0.3	0.3	-
14:01	0.4	0.4	14:01	0.4	0.3	-
14:02	0.4	0.4	14:02	0.4	0.3	-
14:03	0.4	0.4	14:03	0.4	0.3	-
14:04	0.4	0.4	14:04	0.4	0.3	-
14:05	0.4	0.4	14:05	0.4	0.4	-
14:06	0.4	0.4	14:06	0.4	0.4	-
14:07	0.4	0.4	14:07	0.4	0.4	-
14:08	0.4	0.4	14:08	0.3	0.4	-
14:09	0.4	0.4	14:09	0.3	0.4	-
14:10	0.4	0.4	14:10	0.3	0.4	-
14:11	0.4	0.4	14:11	0.3	0.4	-
14:12	0.4	0.4	14:12	0.3	0.3	-
14:13	0.4	0.4	14:13	0.2	0.3	-
14:14	0.4	0.4	14:14	0.2	0.3	-
14:15	0.4	0.4	14:15	0.2	0.3	-
14:16	0.4	0.4	14:16	0.3	0.3	-
14:17	0.3	0.4	14:17	0.3	0.3	-
14:18	0.3	0.4	14:18	0.3	0.3	-
14:19	0.3	0.4	14:19	0.3	0.3	-
14:20	0.3	0.4	14:20	0.3	0.3	-
14:21	0.3	0.4	14:21	0.3	0.3	-
14:22	0.3	0.4	14:22	0.3	0.3	-
14:23	0.3	0.4	14:23	0.3	0.3	-
14:24	0.3	0.3	14:24	0.3	0.3	-
14:25	0.3	0.3	14:25	0.3	0.3	-
14:26	0.3	0.3	14:26	0.3	0.3	-
14:27	0.3	0.3	14:27	0.3	0.3	-
14:28	0.3	0.3	14:28	0.4	0.3	-
14:29	0.3	0.3	14:29	0.4	0.3	-
14:30	0.3	0.3	14:30	0.4	0.3	-
14:31	0.3	0.3	14:31	0.2	0.3	-
14:32	0.3	0.3	14:32	0.2	0.3	-
14:33	0.3	0.3	14:33	0.2	0.3	-
14:34	0.3	0.3	14:34	0.2	0.3	-
14:35	0.3	0.3	14:35	0.2	0.3	-
14:36	0.3	0.3	14:36	0.2	0.3	-
14:37	0.3	0.3	14:37	0.2	0.3	-
14:38	0.3	0.3	14:38	0.2	0.3	-
14:39	0.3	0.3	14:39	0.2	0.3	-
14:40	0.3	0.3	14:40	0.2	0.3	-
14:41	0.3	0.3	14:41	0.2	0.2	-
14:42	0.3	0.3	14:42	0.2	0.2	-
14:43	0.3	0.3	14:43	0.3	0.2	-
14:44	0.4	0.3	14:44	0.3	0.2	-
14:45	0.4	0.3	14:45	0.3	0.2	-
14:46	0.4	0.3	14:46	0.3	0.2	-
14:47	0.4	0.3	14:47	0.3	0.2	-
14:48	0.4	0.3	14:48	0.3	0.2	-
14:49	0.4	0.3	14:49	0.3	0.2	-
14:50	0.4	0.3	14:50	0.0	0.2	-

PID DATA						
Upwind			Downwind			Exceeds VOCs Alarm Limits
Time	VOC (ppm)	15-Minute Average	Time	VOC (ppm)	15-Minute Average	
14:51	0.4	0.4	14:51	0.0	0.2	-
14:52	0.4	0.4	14:52	0.0	0.2	-
14:53	0.4	0.4	14:53	0.0	0.2	-
14:54	0.3	0.4	14:54	0.0	0.2	-
14:55	0.3	0.4	14:55	0.0	0.2	-
14:56	0.3	0.4	14:56	0.0	0.2	-
14:57	0.3	0.4	14:57	0.0	0.1	-
14:58	0.3	0.4	14:58	0.0	0.1	-
14:59	0.3	0.4	14:59	0.0	0.1	-
15:00	0.3	0.4	15:00	0.0	0.1	-
15:01	0.3	0.3	15:01	0.3	0.1	-
15:02	0.3	0.3	15:02	0.3	0.1	-
15:03	0.3	0.3	15:03	0.3	0.1	-
15:04	0.3	0.3	15:04	0.3	0.1	-
15:05	0.3	0.3	15:05	0.3	0.1	-
15:06	0.3	0.3	15:06	0.3	0.1	-
15:07	0.3	0.3	15:07	0.3	0.1	-
15:08	0.3	0.3	15:08	0.3	0.2	-
15:09	0.3	0.3	15:09	0.3	0.2	-
15:10	0.3	0.3	15:10	0.3	0.2	-
15:11	0.3	0.3	15:11	0.3	0.2	-
15:12	0.1	0.3	15:12	0.3	0.2	-
15:13	0.0	0.3	15:13	0.3	0.3	-
15:14	0.0	0.2	15:14	0.3	0.3	-
15:15	0.0	0.2	15:15	0.3	0.3	-
15:16	0.0	0.2	15:16	0.3	0.3	-
15:17	0.0	0.2	15:17	0.3	0.3	-
15:18	0.0	0.2	15:18	0.3	0.3	-