

DAILY OBSERVATION REPORT

LANGAN

PROJECT No.: 170824801 PROJECT: 172 Montrose Avenue LOCATION: Brooklyn, New York BCP SITE NUMBER: C224417	CLIENT: Montrose Meserole Owner LLC	DATE: Sunday, June 21, 2026 WEATHER: Sunny, 68-80 °F Wind: SSW @ 5-19 mph TIME: 8:00 – 15:30 MONITOR: Roswell Lo
EQUIPMENT: Geoprobe 7822DT Drill Rig Hand Tools Community Air Monitoring Plan Stations Handheld Photoionization Detector		PRESENT AT SITE: Environmental Staff (Langan): Roswell Lo Environmental Drilling Contractor (AARCO): Selvin Hernandez, Julio P.

OBSERVATIONS, DISCUSSIONS, TEST RESULTS, ETC.: Langan was present to perform work in accordance with the New York State Department of Environmental Conservation (NYSDEC)-approved Soil Vapor Extraction (SVE) Pilot Test Work Plan and the Remedial Action Work Plan (RAWP) for Brownfield Cleanup Program (BCP) Site No. C224417 at 172 Montrose Avenue (Block 3062, Lot 12). Observed activities were as follows:

Site Activities

- AARCO used a Geoprobe 7822DT drill rig to advance four soil borings for monitoring points VP-01 through VP-04 using mud rotary drilling methods to a final depth of 26 feet below ground surface (bgs).
 - A two-inch-diameter SVE monitoring point was installed in each borehole consisting of ten feet of Schedule 40 polyvinyl chloride (PVC) screen set from about 25 feet to 15 feet bgs, and PVC riser set from about 15 feet bgs to 1 foot above grade surface (ags).

Sampling

- No samples were collected this day.

Community Air Monitoring Plan (CAMP) Activities

- Langan set up CAMP stations at the upwind and downwind site perimeters to monitor VOCs and particulate matter less than 10 micrometers (µm) in diameter (PM10) during intrusive activity. PM10 and VOC concentrations did not exceed the action levels established in the site CAMP. Fugitive dust or odors associated with intrusive activities were not observed.

Anticipated Activities

- AARCO will complete the SVE pilot test as part of the SVE Pilot Test Work Plan.

Cc:	C. Devin, S. Fernholz, K. Semon, B. Gochenaur (Langan)	By:	Romeo Tiu LANGAN
------------	---	------------	----------------------------

Site Photographs:



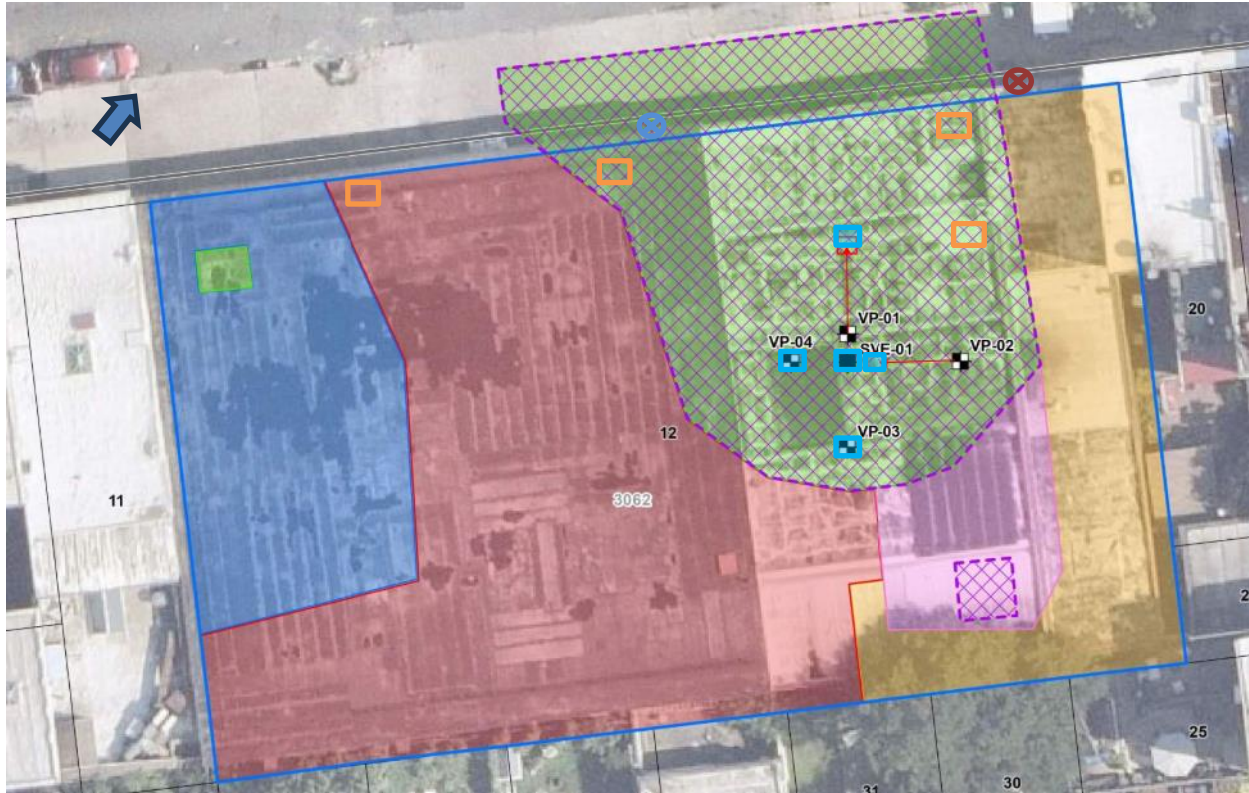
Photo 1: View of AARCO advancing a soil boring for SVE monitoring point VP-04 (facing south).



Photo 2: General view of the site (facing south).

Cc:	C. Devin, S. Fernholz, K. Semon, B. Gochenaur (Langan)	By:	Romeo Tiu LANGAN
-----	---	-----	----------------------------

Figure 1: SVE Pilot Test Area Well Network Map



Legend

- Proposed Vacuum Monitoring Probe Location
- Proposed Soil Vapor Extraction Well Location
- Approximate Site Boundary
- Tax Block
- Tax Parcel
- Excavation to about 2 feet bgs
- Excavation to about 4 feet bgs
- Excavation to about 10 feet bgs
- Excavation to about 12 feet bgs
- Excavation to about 15 to 17 feet bgs
- Approximate Soil Vapor Extraction Treatment Extents

- Soil Boring Advanced
- SVE Pilot Test Well Installed
- ⊗ Upwind CAMP Station
- ⊗ Downwind CAMP Station
- ↑ Wind Direction
- Drum Staging Area
- ➔ SVE Pilot Test Well Location Moved

Cc: C. Devin, S. Fernholz, K. Semon, B. Gochenaur (Langan)

By: Romeo Tiu
LANGAN

Date: Sunday, June 21, 2026

Start: 8:38

End: 15:06

Observer: Roswell Lo

UPWIND - UW
DOWNWIND - DW

Particulate Monitoring		
	UW	DW
Daily Average	0.038	0.005
Minimum 15min Average	0.036	0.004
Maximum 15min Average	0.042	0.009
High Intervals "exceedances" (15min > 1.5 + Upwind level)	NA	0.0
Minimum 1min Reading	0.034	0.003
Maximum 1min Reading	0.052	0.020

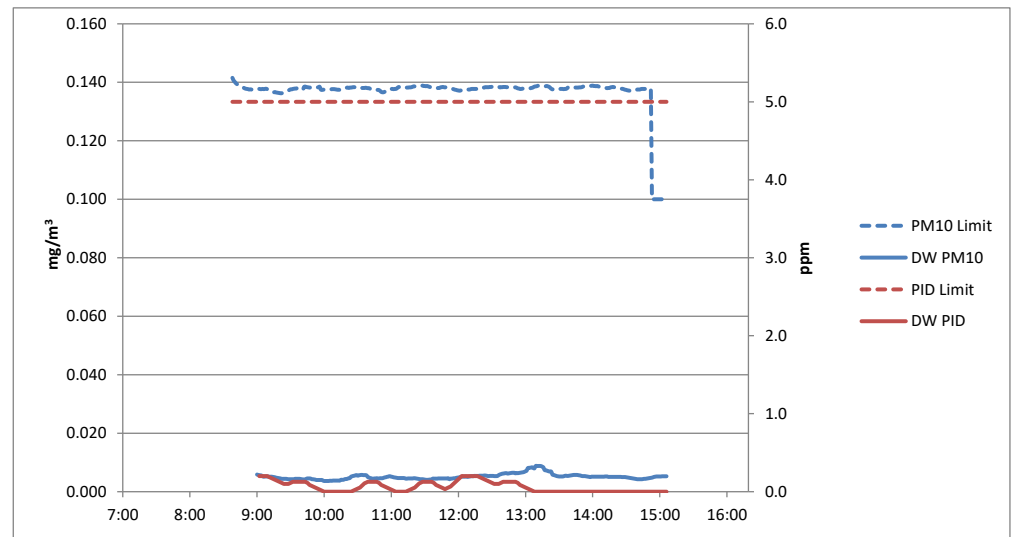
NA - Not applicable, upwind unit used for background concentrations

All reported units are mg/m³ or milligrams per cubic meter unless specified otherwise

Organic Vapor Monitoring		
	UW	DW
Daily Average	0.0	0.1
Minimum 15min Average	0.0	0.0
Maximum 15min Average	0.0	0.2
High Intervals "exceedances" (15min > 5 + Upwind level)	NA	0.0
Minimum 1min Reading	0.0	0.0
Maximum 1min Reading	0.0	0.2

NA - Not applicable, upwind unit used for background concentrations

All reported units are ppm or parts per million unless specified otherwise



Sunday, June 21, 2026						
Number of Instances Where Downwind Particulates Exceeds Upwind Particulate + 150 =						0
Number of Comparable Data Points =						367
Start Time:						8:38
End Time:						15:06
PARTICULATE DATA						
Upwind			Downwind			Exceeds Particulate Alarm Limits
Time	Concentration (mg/m ³)	15-Minute Average	Time	Concentration (mg/m ³)	15-Minute Average	
8:38	0.051		8:38			
8:39	0.046		8:39			
8:40	0.044		8:40			
8:41	0.043		8:41			
8:42	0.042		8:42	0.007		
8:43	0.042		8:43	0.006		
8:44	0.041		8:44	0.006		
8:45	0.041		8:45	0.007		
8:46	0.04		8:46	0.007		
8:47	0.039		8:47	0.007		
8:48	0.04		8:48	0.006		
8:49	0.039		8:49	0.006		
8:50	0.039		8:50	0.009		
8:51	0.038		8:51	0.007		
8:52	0.038	0.042	8:52	0.005		
8:53	0.038	0.041	8:53	0.005		
8:54	0.039	0.040	8:54	0.005		
8:55	0.037	0.040	8:55	0.005		
8:56	0.038	0.039	8:56	0.006		
8:57	0.037	0.039	8:57	0.005		
8:58	0.038	0.039	8:58	0.005		
8:59	0.038	0.039	8:59	0.005		
9:00	0.038	0.038	9:00	0.005	0.006	-
9:01	0.037	0.038	9:01	0.005	0.006	-
9:02	0.038	0.038	9:02	0.006	0.006	-
9:03	0.037	0.038	9:03	0.005	0.006	-
9:04	0.037	0.038	9:04	0.005	0.006	-
9:05	0.038	0.038	9:05	0.005	0.005	-
9:06	0.037	0.038	9:06	0.005	0.005	-
9:07	0.036	0.038	9:07	0.006	0.005	-
9:08	0.039	0.038	9:08	0.005	0.005	-
9:09	0.038	0.038	9:09	0.005	0.005	-
9:10	0.038	0.038	9:10	0.005	0.005	-
9:11	0.038	0.038	9:11	0.005	0.005	-
9:12	0.038	0.038	9:12	0.005	0.005	-
9:13	0.037	0.038	9:13	0.005	0.005	-
9:14	0.04	0.038	9:14	0.004	0.005	-
9:15	0.037	0.038	9:15	0.004	0.005	-
9:16	0.038	0.038	9:16	0.004	0.005	-
9:17	0.037	0.038	9:17	0.004	0.005	-
9:18	0.037	0.038	9:18	0.004	0.005	-
9:19	0.038	0.038	9:19	0.004	0.005	-
9:20	0.037	0.038	9:20	0.004	0.005	-
9:21	0.038	0.038	9:21	0.004	0.005	-
9:22	0.037	0.038	9:22	0.004	0.004	-
9:23	0.037	0.038	9:23	0.005	0.004	-
9:24	0.036	0.038	9:24	0.005	0.004	-
9:25	0.036	0.037	9:25	0.005	0.004	-
9:26	0.035	0.037	9:26	0.005	0.004	-
9:27	0.035	0.037	9:27	0.004	0.004	-
9:28	0.036	0.037	9:28	0.004	0.004	-
9:29	0.035	0.037	9:29	0.004	0.004	-
9:30	0.038	0.037	9:30	0.004	0.004	-
9:31	0.036	0.037	9:31	0.004	0.004	-
9:32	0.036	0.036	9:32	0.004	0.004	-
9:33	0.036	0.036	9:33	0.004	0.004	-
9:34	0.037	0.036	9:34	0.006	0.004	-
9:35	0.036	0.036	9:35	0.004	0.004	-
9:36	0.038	0.036	9:36	0.004	0.004	-
9:37	0.038	0.036	9:37	0.004	0.004	-
9:38	0.039	0.036	9:38	0.005	0.004	-
9:39	0.038	0.037	9:39	0.004	0.004	-
9:40	0.039	0.037	9:40	0.004	0.004	-
9:41	0.038	0.037	9:41	0.004	0.004	-
9:42	0.038	0.037	9:42	0.004	0.004	-
9:43	0.039	0.037	9:43	0.004	0.004	-
9:44	0.038	0.038	9:44	0.007	0.004	-
9:45	0.038	0.038	9:45	0.006	0.005	-
9:46	0.038	0.038	9:46	0.004	0.005	-
9:47	0.037	0.038	9:47	0.004	0.005	-
9:48	0.037	0.038	9:48	0.003	0.004	-
9:49	0.037	0.038	9:49	0.003	0.004	-
9:50	0.038	0.038	9:50	0.004	0.004	-
9:51	0.037	0.038	9:51	0.003	0.004	-
9:52	0.037	0.038	9:52	0.003	0.004	-
9:53	0.037	0.038	9:53	0.003	0.004	-
9:54	0.037	0.038	9:54	0.004	0.004	-

PARTICULATE DATA						
Upwind			Downwind			Exceeds Particulate Alarm Limits
Time	Concentration (mg/m ³)	15-Minute Average	Time	Concentration (mg/m ³)	15-Minute Average	
9:55	0.036	0.037	9:55	0.004	0.004	-
9:56	0.052	0.038	9:56	0.004	0.004	-
9:57	0.04	0.039	9:57	0.004	0.004	-
9:58	0.037	0.038	9:58	0.004	0.004	-
9:59	0.037	0.038	9:59	0.004	0.004	-
10:00	0.037	0.038	10:00	0.004	0.004	-
10:01	0.037	0.038	10:01	0.004	0.004	-
10:02	0.037	0.038	10:02	0.004	0.004	-
10:03	0.037	0.038	10:03	0.003	0.004	-
10:04	0.037	0.038	10:04	0.003	0.004	-
10:05	0.037	0.038	10:05	0.005	0.004	-
10:06	0.038	0.038	10:06	0.003	0.004	-
10:07	0.037	0.038	10:07	0.003	0.004	-
10:08	0.038	0.038	10:08	0.004	0.004	-
10:09	0.038	0.038	10:09	0.004	0.004	-
10:10	0.038	0.038	10:10	0.004	0.004	-
10:11	0.038	0.038	10:11	0.004	0.004	-
10:12	0.038	0.037	10:12	0.004	0.004	-
10:13	0.038	0.037	10:13	0.004	0.004	-
10:14	0.037	0.037	10:14	0.004	0.004	-
10:15	0.037	0.037	10:15	0.008	0.004	-
10:16	0.037	0.037	10:16	0.004	0.004	-
10:17	0.037	0.037	10:17	0.004	0.004	-
10:18	0.037	0.037	10:18	0.005	0.004	-
10:19	0.038	0.038	10:19	0.005	0.004	-
10:20	0.038	0.038	10:20	0.005	0.004	-
10:21	0.039	0.038	10:21	0.005	0.004	-
10:22	0.037	0.038	10:22	0.005	0.005	-
10:23	0.038	0.038	10:23	0.005	0.005	-
10:24	0.037	0.038	10:24	0.011	0.005	-
10:25	0.037	0.038	10:25	0.006	0.005	-
10:26	0.037	0.037	10:26	0.006	0.005	-
10:27	0.038	0.037	10:27	0.005	0.005	-
10:28	0.037	0.037	10:28	0.006	0.006	-
10:29	0.038	0.037	10:29	0.005	0.006	-
10:30	0.039	0.038	10:30	0.005	0.005	-
10:31	0.04	0.038	10:31	0.006	0.006	-
10:32	0.039	0.038	10:32	0.005	0.006	-
10:33	0.039	0.038	10:33	0.006	0.006	-
10:34	0.039	0.038	10:34	0.005	0.006	-
10:35	0.039	0.038	10:35	0.004	0.006	-
10:36	0.037	0.038	10:36	0.005	0.006	-
10:37	0.039	0.038	10:37	0.005	0.006	-
10:38	0.038	0.038	10:38	0.003	0.006	-
10:39	0.038	0.038	10:39	0.003	0.005	-
10:40	0.038	0.038	10:40	0.004	0.005	-
10:41	0.037	0.038	10:41	0.003	0.005	-
10:42	0.038	0.038	10:42	0.004	0.005	-
10:43	0.039	0.038	10:43	0.004	0.004	-
10:44	0.038	0.038	10:44	0.005	0.004	-
10:45	0.037	0.038	10:45	0.006	0.005	-
10:46	0.038	0.038	10:46	0.006	0.005	-
10:47	0.038	0.038	10:47	0.006	0.005	-
10:48	0.038	0.038	10:48	0.005	0.005	-
10:49	0.039	0.038	10:49	0.005	0.005	-
10:50	0.039	0.038	10:50	0.005	0.005	-
10:51	0.038	0.038	10:51	0.005	0.005	-
10:52	0.038	0.038	10:52	0.005	0.005	-
10:53	0.037	0.038	10:53	0.005	0.005	-
10:54	0.038	0.038	10:54	0.005	0.005	-
10:55	0.035	0.038	10:55	0.005	0.005	-
10:56	0.035	0.038	10:56	0.005	0.005	-
10:57	0.035	0.037	10:57	0.005	0.005	-
10:58	0.037	0.037	10:58	0.006	0.005	-
10:59	0.038	0.037	10:59	0.005	0.005	-
11:00	0.038	0.037	11:00	0.004	0.005	-
11:01	0.038	0.037	11:01	0.005	0.005	-
11:02	0.038	0.037	11:02	0.004	0.005	-
11:03	0.037	0.037	11:03	0.004	0.005	-
11:04	0.035	0.037	11:04	0.004	0.005	-
11:05	0.034	0.037	11:05	0.004	0.005	-
11:06	0.036	0.037	11:06	0.004	0.005	-
11:07	0.038	0.037	11:07	0.005	0.005	-
11:08	0.039	0.037	11:08	0.005	0.005	-
11:09	0.039	0.037	11:09	0.005	0.005	-
11:10	0.038	0.037	11:10	0.005	0.005	-
11:11	0.04	0.037	11:11	0.005	0.005	-
11:12	0.039	0.038	11:12	0.004	0.005	-
11:13	0.039	0.038	11:13	0.004	0.004	-
11:14	0.038	0.038	11:14	0.005	0.004	-
11:15	0.038	0.038	11:15	0.005	0.005	-
11:16	0.037	0.038	11:16	0.005	0.005	-
11:17	0.039	0.038	11:17	0.004	0.005	-
11:18	0.037	0.038	11:18	0.004	0.005	-

PARTICULATE DATA						
Upwind			Downwind			Exceeds Particulate Alarm Limits
Time	Concentration (mg/m ³)	15-Minute Average	Time	Concentration (mg/m ³)	15-Minute Average	
11:19	0.038	0.038	11:19	0.004	0.005	-
11:20	0.039	0.038	11:20	0.005	0.005	-
11:21	0.038	0.038	11:21	0.004	0.005	-
11:22	0.037	0.038	11:22	0.004	0.005	-
11:23	0.039	0.038	11:23	0.004	0.004	-
11:24	0.039	0.038	11:24	0.004	0.004	-
11:25	0.039	0.038	11:25	0.004	0.004	-
11:26	0.038	0.038	11:26	0.004	0.004	-
11:27	0.038	0.038	11:27	0.004	0.004	-
11:28	0.039	0.038	11:28	0.004	0.004	-
11:29	0.038	0.038	11:29	0.004	0.004	-
11:30	0.039	0.038	11:30	0.004	0.004	-
11:31	0.037	0.038	11:31	0.004	0.004	-
11:32	0.04	0.038	11:32	0.004	0.004	-
11:33	0.039	0.038	11:33	0.004	0.004	-
11:34	0.04	0.039	11:34	0.005	0.004	-
11:35	0.039	0.039	11:35	0.005	0.004	-
11:36	0.039	0.039	11:36	0.004	0.004	-
11:37	0.038	0.039	11:37	0.009	0.004	-
11:38	0.04	0.039	11:38	0.004	0.004	-
11:39	0.039	0.039	11:39	0.004	0.004	-
11:40	0.039	0.039	11:40	0.004	0.004	-
11:41	0.038	0.039	11:41	0.004	0.004	-
11:42	0.039	0.039	11:42	0.005	0.005	-
11:43	0.037	0.039	11:43	0.004	0.005	-
11:44	0.038	0.039	11:44	0.004	0.005	-
11:45	0.038	0.039	11:45	0.004	0.005	-
11:46	0.038	0.039	11:46	0.004	0.005	-
11:47	0.038	0.039	11:47	0.004	0.005	-
11:48	0.037	0.038	11:48	0.004	0.005	-
11:49	0.038	0.038	11:49	0.005	0.005	-
11:50	0.038	0.038	11:50	0.005	0.005	-
11:51	0.038	0.038	11:51	0.005	0.005	-
11:52	0.038	0.038	11:52	0.004	0.004	-
11:53	0.038	0.038	11:53	0.007	0.004	-
11:54	0.039	0.038	11:54	0.004	0.004	-
11:55	0.038	0.038	11:55	0.005	0.005	-
11:56	0.039	0.038	11:56	0.005	0.005	-
11:57	0.039	0.038	11:57	0.005	0.005	-
11:58	0.04	0.038	11:58	0.006	0.005	-
11:59	0.039	0.038	11:59	0.005	0.005	-
12:00	0.039	0.038	12:00	0.005	0.005	-
12:01	0.037	0.038	12:01	0.005	0.005	-
12:02	0.037	0.038	12:02	0.006	0.005	-
12:03	0.038	0.038	12:03	0.005	0.005	-
12:04	0.037	0.038	12:04	0.005	0.005	-
12:05	0.036	0.038	12:05	0.005	0.005	-
12:06	0.036	0.038	12:06	0.005	0.005	-
12:07	0.036	0.038	12:07	0.005	0.005	-
12:08	0.037	0.038	12:08	0.005	0.005	-
12:09	0.038	0.038	12:09	0.005	0.005	-
12:10	0.036	0.038	12:10	0.006	0.005	-
12:11	0.037	0.037	12:11	0.006	0.005	-
12:12	0.038	0.037	12:12	0.006	0.005	-
12:13	0.038	0.037	12:13	0.005	0.005	-
12:14	0.038	0.037	12:14	0.007	0.005	-
12:15	0.038	0.037	12:15	0.005	0.005	-
12:16	0.038	0.037	12:16	0.005	0.005	-
12:17	0.037	0.037	12:17	0.006	0.005	-
12:18	0.037	0.037	12:18	0.005	0.005	-
12:19	0.038	0.037	12:19	0.006	0.005	-
12:20	0.036	0.037	12:20	0.005	0.005	-
12:21	0.039	0.037	12:21	0.005	0.005	-
12:22	0.038	0.038	12:22	0.005	0.005	-
12:23	0.037	0.038	12:23	0.006	0.006	-
12:24	0.038	0.038	12:24	0.005	0.006	-
12:25	0.038	0.038	12:25	0.005	0.005	-
12:26	0.038	0.038	12:26	0.005	0.005	-
12:27	0.038	0.038	12:27	0.005	0.005	-
12:28	0.038	0.038	12:28	0.006	0.005	-
12:29	0.038	0.038	12:29	0.007	0.005	-
12:30	0.038	0.038	12:30	0.005	0.005	-
12:31	0.038	0.038	12:31	0.005	0.005	-
12:32	0.037	0.038	12:32	0.005	0.005	-
12:33	0.037	0.038	12:33	0.005	0.005	-
12:34	0.039	0.038	12:34	0.006	0.005	-
12:35	0.038	0.038	12:35	0.006	0.005	-
12:36	0.043	0.038	12:36	0.009	0.006	-
12:37	0.038	0.038	12:37	0.008	0.006	-
12:38	0.039	0.038	12:38	0.008	0.006	-
12:39	0.038	0.038	12:39	0.007	0.006	-
12:40	0.038	0.038	12:40	0.006	0.006	-
12:41	0.038	0.038	12:41	0.006	0.006	-
12:42	0.039	0.038	12:42	0.006	0.006	-

PARTICULATE DATA						
Upwind			Downwind			Exceeds Particulate Alarm Limits
Time	Concentration (mg/m ³)	15-Minute Average	Time	Concentration (mg/m ³)	15-Minute Average	
12:43	0.038	0.038	12:43	0.006	0.006	-
12:44	0.039	0.038	12:44	0.005	0.006	-
12:45	0.038	0.038	12:45	0.006	0.006	-
12:46	0.038	0.038	12:46	0.006	0.006	-
12:47	0.038	0.039	12:47	0.006	0.006	-
12:48	0.038	0.039	12:48	0.006	0.006	-
12:49	0.038	0.039	12:49	0.006	0.006	-
12:50	0.038	0.039	12:50	0.006	0.006	-
12:51	0.039	0.038	12:51	0.006	0.006	-
12:52	0.039	0.038	12:52	0.01	0.006	-
12:53	0.039	0.038	12:53	0.007	0.006	-
12:54	0.039	0.038	12:54	0.008	0.006	-
12:55	0.038	0.038	12:55	0.007	0.006	-
12:56	0.038	0.038	12:56	0.007	0.007	-
12:57	0.038	0.038	12:57	0.007	0.007	-
12:58	0.038	0.038	12:58	0.007	0.007	-
12:59	0.038	0.038	12:59	0.007	0.007	-
13:00	0.038	0.038	13:00	0.009	0.007	-
13:01	0.038	0.038	13:01	0.009	0.007	-
13:02	0.038	0.038	13:02	0.019	0.008	-
13:03	0.038	0.038	13:03	0.007	0.008	-
13:04	0.038	0.038	13:04	0.007	0.008	-
13:05	0.038	0.038	13:05	0.007	0.008	-
13:06	0.037	0.038	13:06	0.007	0.008	-
13:07	0.036	0.038	13:07	0.006	0.008	-
13:08	0.038	0.038	13:08	0.006	0.008	-
13:09	0.037	0.038	13:09	0.02	0.009	-
13:10	0.038	0.038	13:10	0.007	0.009	-
13:11	0.039	0.038	13:11	0.007	0.009	-
13:12	0.039	0.038	13:12	0.007	0.009	-
13:13	0.038	0.038	13:13	0.007	0.009	-
13:14	0.038	0.038	13:14	0.006	0.009	-
13:15	0.039	0.038	13:15	0.006	0.009	-
13:16	0.038	0.038	13:16	0.005	0.008	-
13:17	0.039	0.038	13:17	0.006	0.007	-
13:18	0.037	0.038	13:18	0.006	0.007	-
13:19	0.04	0.038	13:19	0.005	0.007	-
13:20	0.039	0.038	13:20	0.005	0.007	-
13:21	0.04	0.038	13:21	0.005	0.007	-
13:22	0.039	0.039	13:22	0.006	0.007	-
13:23	0.039	0.039	13:23	0.005	0.007	-
13:24	0.038	0.039	13:24	0.005	0.006	-
13:25	0.04	0.039	13:25	0.005	0.006	-
13:26	0.039	0.039	13:26	0.005	0.006	-
13:27	0.039	0.039	13:27	0.005	0.005	-
13:28	0.038	0.039	13:28	0.005	0.005	-
13:29	0.039	0.039	13:29	0.005	0.005	-
13:30	0.037	0.039	13:30	0.005	0.005	-
13:31	0.038	0.039	13:31	0.005	0.005	-
13:32	0.038	0.039	13:32	0.006	0.005	-
13:33	0.038	0.039	13:33	0.006	0.005	-
13:34	0.038	0.039	13:34	0.006	0.005	-
13:35	0.037	0.038	13:35	0.007	0.005	-
13:36	0.035	0.038	13:36	0.006	0.005	-
13:37	0.034	0.038	13:37	0.005	0.005	-
13:38	0.036	0.038	13:38	0.005	0.005	-
13:39	0.038	0.038	13:39	0.006	0.005	-
13:40	0.039	0.038	13:40	0.006	0.006	-
13:41	0.039	0.038	13:41	0.006	0.006	-
13:42	0.038	0.037	13:42	0.006	0.006	-
13:43	0.04	0.038	13:43	0.006	0.006	-
13:44	0.039	0.038	13:44	0.005	0.006	-
13:45	0.039	0.038	13:45	0.005	0.006	-
13:46	0.038	0.038	13:46	0.005	0.006	-
13:47	0.038	0.038	13:47	0.005	0.006	-
13:48	0.037	0.038	13:48	0.005	0.006	-
13:49	0.039	0.038	13:49	0.005	0.006	-
13:50	0.037	0.038	13:50	0.005	0.005	-

PARTICULATE DATA						
Upwind			Downwind			Exceeds Particulate Alarm Limits
Time	Concentration (mg/m ³)	15-Minute Average	Time	Concentration (mg/m ³)	15-Minute Average	
13:51	0.038	0.038	13:51	0.005	0.005	-
13:52	0.039	0.038	13:52	0.005	0.005	-
13:53	0.038	0.038	13:53	0.005	0.005	-
13:54	0.037	0.038	13:54	0.005	0.005	-
13:55	0.039	0.038	13:55	0.005	0.005	-
13:56	0.039	0.038	13:56	0.005	0.005	-
13:57	0.039	0.038	13:57	0.005	0.005	-
13:58	0.038	0.038	13:58	0.005	0.005	-
13:59	0.038	0.038	13:59	0.007	0.005	-
14:00	0.039	0.038	14:00	0.005	0.005	-
14:01	0.038	0.038	14:01	0.005	0.005	-
14:02	0.039	0.038	14:02	0.005	0.005	-
14:03	0.037	0.038	14:03	0.005	0.005	-
14:04	0.04	0.038	14:04	0.005	0.005	-
14:05	0.039	0.038	14:05	0.005	0.005	-
14:06	0.04	0.039	14:06	0.005	0.005	-
14:07	0.039	0.039	14:07	0.005	0.005	-
14:08	0.039	0.039	14:08	0.005	0.005	-
14:09	0.038	0.039	14:09	0.005	0.005	-
14:10	0.04	0.039	14:10	0.005	0.005	-
14:11	0.039	0.039	14:11	0.006	0.005	-
14:12	0.039	0.039	14:12	0.005	0.005	-
14:13	0.038	0.039	14:13	0.005	0.005	-
14:14	0.039	0.039	14:14	0.005	0.005	-
14:15	0.037	0.039	14:15	0.005	0.005	-
14:16	0.038	0.039	14:16	0.005	0.005	-
14:17	0.038	0.039	14:17	0.005	0.005	-
14:18	0.038	0.039	14:18	0.005	0.005	-
14:19	0.038	0.039	14:19	0.005	0.005	-
14:20	0.037	0.038	14:20	0.005	0.005	-
14:21	0.038	0.038	14:21	0.005	0.005	-
14:22	0.038	0.038	14:22	0.005	0.005	-
14:23	0.038	0.038	14:23	0.005	0.005	-
14:24	0.038	0.038	14:24	0.005	0.005	-
14:25	0.038	0.038	14:25	0.005	0.005	-
14:26	0.039	0.038	14:26	0.005	0.005	-
14:27	0.038	0.038	14:27	0.005	0.005	-
14:28	0.039	0.038	14:28	0.005	0.005	-
14:29	0.039	0.038	14:29	0.005	0.005	-
14:30	0.04	0.038	14:30	0.004	0.005	-
14:31	0.039	0.038	14:31	0.004	0.005	-
14:32	0.039	0.038	14:32	0.004	0.005	-
14:33	0.037	0.038	14:33	0.004	0.005	-
14:34	0.037	0.038	14:34	0.004	0.005	-
14:35	0.038	0.038	14:35	0.004	0.005	-
14:36	0.037	0.038	14:36	0.004	0.005	-
14:37	0.036	0.038	14:37	0.004	0.004	-
14:38	0.036	0.038	14:38	0.004	0.004	-
14:39	0.036	0.038	14:39	0.004	0.004	-
14:40	0.037	0.038	14:40	0.004	0.004	-
14:41	0.038	0.038	14:41	0.005	0.004	-
14:42	0.036	0.038	14:42	0.005	0.004	-
14:43	0.037	0.037	14:43	0.005	0.004	-
14:44	0.038	0.037	14:44	0.005	0.004	-
14:45	0.038	0.037	14:45	0.005	0.004	-
14:46	0.038	0.037	14:46	0.005	0.004	-
14:47	0.038	0.037	14:47	0.004	0.004	-
14:48	0.038	0.037	14:48	0.005	0.004	-
14:49	0.037	0.037	14:49	0.005	0.005	-
14:50	0.037	0.037	14:50	0.005	0.005	-
14:51	0.038	0.037	14:51	0.005	0.005	-
14:52	0.036	0.037	14:52	0.005	0.005	-
14:53	0.039	0.037	14:53	0.005	0.005	-
14:54	0.038	0.038	14:54	0.006	0.005	-
14:55	0.037	0.038	14:55	0.006	0.005	-
14:56	0.038	0.038	14:56	0.006	0.005	-
14:57	0.038	0.038	14:57	0.006	0.005	-
14:58	0.038	0.038	14:58	0.005	0.005	-
14:59	0.038	0.038	14:59	0.005	0.005	-
15:00	0.038	0.038	15:00	0.005	0.005	-
15:01	0.038	0.038	15:01	0.005	0.005	-
15:02	0.038	0.038	15:02	0.005	0.005	-
15:03	0.038	0.038	15:03	0.005	0.005	-
15:04	0.037	0.038	15:04	0.005	0.005	-
15:05	0.037	0.038	15:05	0.005	0.005	-
15:06	0.039	0.038	15:06	0.005	0.005	-

Sunday, June 21, 2026						
Number of Instances Where Downwind VOCs Exceeds Upwind VOCs + 5 =						0
Number of Comparable Data Points =						365
Start Time:						8:38
End Time:						15:06
PID DATA						
Upwind			Downwind			Exceeds VOCs Alarm Limits
Time	VOC (ppm)	15-Minute Average	Time	VOC (ppm)	15-Minute Average	
8:38			8:38			
8:39	0.0		8:39			
8:40	0.0		8:40			
8:41	0.0		8:41			
8:42	0.0		8:42	0.2		
8:43	0.0		8:43	0.2		
8:44	0.0		8:44	0.2		
8:45	0.0		8:45	0.2		
8:46	0.0		8:46	0.2		
8:47	0.0		8:47	0.2		
8:48	0.0		8:48	0.2		
8:49	0.0		8:49	0.2		
8:50	0.0		8:50	0.2		
8:51	0.0		8:51	0.2		
8:52	0.0	0.0	8:52	0.2		
8:53	0.0	0.0	8:53	0.2		
8:54	0.0	0.0	8:54	0.2		
8:55	0.0	0.0	8:55	0.2		
8:56	0.0	0.0	8:56	0.2		
8:57	0.0	0.0	8:57	0.2		
8:58	0.0	0.0	8:58	0.2		
8:59	0.0	0.0	8:59	0.2		
9:00	0.0	0.0	9:00	0.2		
9:01	0.0	0.0	9:01	0.2		
9:02	0.0	0.0	9:02	0.2	0.2	-
9:03	0.0	0.0	9:03	0.2	0.2	-
9:04	0.0	0.0	9:04	0.2	0.2	-
9:05	0.0	0.0	9:05	0.2	0.2	-
9:06	0.0	0.0	9:06	0.2	0.2	-
9:07	0.0	0.0	9:07	0.2	0.2	-
9:08	0.0	0.0	9:08	0.2	0.2	-
9:09	0.0	0.0	9:09	0.2	0.2	-
9:10	0.0	0.0	9:10	0.2	0.2	-
9:11	0.0	0.0	9:11	0.2	0.2	-
9:12	0.0	0.0	9:12	0.2	0.2	-
9:13	0.0	0.0	9:13	0.2	0.2	-
9:14	0.0	0.0	9:14	0.2	0.2	-
9:15	0.0	0.0	9:15	0.1	0.2	-
9:16	0.0	0.0	9:16	0.1	0.2	-
9:17	0.0	0.0	9:17	0.1	0.1	-
9:18	0.0	0.0	9:18	0.1	0.1	-
9:19	0.0	0.0	9:19	0.1	0.1	-
9:20	0.0	0.0	9:20	0.1	0.1	-
9:21	0.0	0.0	9:21	0.1	0.1	-
9:22	0.0	0.0	9:22	0.1	0.1	-
9:23	0.0	0.0	9:23	0.1	0.1	-
9:24	0.0	0.0	9:24	0.1	0.1	-
9:25	0.0	0.0	9:25	0.1	0.1	-
9:26	0.0	0.0	9:26	0.1	0.1	-
9:27	0.0	0.0	9:27	0.1	0.1	-
9:28	0.0	0.0	9:28	0.1	0.1	-
9:29	0.0	0.0	9:29	0.1	0.1	-
9:30	0.0	0.0	9:30	0.1	0.1	-
9:31	0.0	0.0	9:31	0.1	0.1	-
9:32	0.0	0.0	9:32	0.1	0.1	-
9:33	0.0	0.0	9:33	0.1	0.1	-
9:34	0.0	0.0	9:34	0.2	0.1	-
9:35	0.0	0.0	9:35	0.2	0.1	-
9:36	0.0	0.0	9:36	0.2	0.1	-
9:37	0.0	0.0	9:37	0.2	0.1	-
9:38	0.0	0.0	9:38	0.1	0.1	-
9:39	0.0	0.0	9:39	0.1	0.1	-
9:40	0.0	0.0	9:40	0.1	0.1	-
9:41	0.0	0.0	9:41	0.1	0.1	-
9:42	0.0	0.0	9:42	0.1	0.1	-
9:43	0.0	0.0	9:43	0.1	0.1	-
9:44	0.0	0.0	9:44	0.1	0.1	-
9:45	0.0	0.0	9:45	0.1	0.1	-
9:46	0.0	0.0	9:46	0.1	0.1	-
9:47	0.0	0.0	9:47	0.1	0.1	-
9:48	0.0	0.0	9:48	0.1	0.1	-
9:49	0.0	0.0	9:49	0.1	0.1	-
9:50	0.0	0.0	9:50	0.1	0.1	-
9:51	0.0	0.0	9:51	0.0	0.1	-
9:52	0.0	0.0	9:52	0.0	0.0	-
9:53	0.0	0.0	9:53	0.0	0.0	-
9:54	0.0	0.0	9:54	0.0	0.0	-
9:55	0.0	0.0	9:55	0.0	0.0	-

PID DATA						
Upwind			Downwind			Exceeds VOCs Alarm Limits
Time	VOC (ppm)	15-Minute Average	Time	VOC (ppm)	15-Minute Average	
9:56	0.0	0.0	9:56	0.0	0.0	-
9:57	0.0	0.0	9:57	0.0	0.0	-
9:58	0.0	0.0	9:58	0.0	0.0	-
9:59	0.0	0.0	9:59	0.0	0.0	-
10:00	0.0	0.0	10:00	0.0	0.0	-
10:01	0.0	0.0	10:01	0.0	0.0	-
10:02	0.0	0.0	10:02	0.0	0.0	-
10:03	0.0	0.0	10:03	0.0	0.0	-
10:04	0.0	0.0	10:04	0.0	0.0	-
10:05	0.0	0.0	10:05	0.0	0.0	-
10:06	0.0	0.0	10:06	0.0	0.0	-
10:07	0.0	0.0	10:07	0.0	0.0	-
10:08	0.0	0.0	10:08	0.0	0.0	-
10:09	0.0	0.0	10:09	0.0	0.0	-
10:10	0.0	0.0	10:10	0.0	0.0	-
10:11	0.0	0.0	10:11	0.0	0.0	-
10:12	0.0	0.0	10:12	0.0	0.0	-
10:13	0.0	0.0	10:13	0.0	0.0	-
10:14	0.0	0.0	10:14	0.0	0.0	-
10:15	0.0	0.0	10:15	0.0	0.0	-
10:16	0.0	0.0	10:16	0.0	0.0	-
10:17	0.0	0.0	10:17	0.0	0.0	-
10:18	0.0	0.0	10:18	0.0	0.0	-
10:19	0.0	0.0	10:19	0.0	0.0	-
10:20	0.0	0.0	10:20	0.0	0.0	-
10:21	0.0	0.0	10:21	0.0	0.0	-
10:22	0.0	0.0	10:22	0.0	0.0	-
10:23	0.0	0.0	10:23	0.0	0.0	-
10:24	0.0	0.0	10:24	0.0	0.0	-
10:25	0.0	0.0	10:25	0.0	0.0	-
10:26	0.0	0.0	10:26	0.0	0.0	-
10:27	0.0	0.0	10:27	0.0	0.0	-
10:28	0.0	0.0	10:28	0.0	0.0	-
10:29	0.0	0.0	10:29	0.0	0.0	-
10:30	0.0	0.0	10:30	0.1	0.0	-
10:31	0.0	0.0	10:31	0.1	0.0	-
10:32	0.0	0.0	10:32	0.1	0.1	-
10:33	0.0	0.0	10:33	0.1	0.1	-
10:34	0.0	0.0	10:34	0.1	0.1	-
10:35	0.0	0.0	10:35	0.1	0.1	-
10:36	0.0	0.0	10:36	0.1	0.1	-
10:37	0.0	0.0	10:37	0.1	0.1	-
10:38	0.0	0.0	10:38	0.2	0.1	-
10:39	0.0	0.0	10:39	0.2	0.1	-
10:40	0.0	0.0	10:40	0.2	0.1	-
10:41	0.0	0.0	10:41	0.2	0.1	-
10:42	0.0	0.0	10:42	0.1	0.1	-
10:43	0.0	0.0	10:43	0.1	0.1	-
10:44	0.0	0.0	10:44	0.1	0.1	-
10:45	0.0	0.0	10:45	0.1	0.1	-
10:46	0.0	0.0	10:46	0.1	0.1	-
10:47	0.0	0.0	10:47	0.1	0.1	-
10:48	0.0	0.0	10:48	0.1	0.1	-
10:49	0.0	0.0	10:49	0.1	0.1	-
10:50	0.0	0.0	10:50	0.1	0.1	-
10:51	0.0	0.0	10:51	0.1	0.1	-
10:52	0.0	0.0	10:52	0.1	0.1	-
10:53	0.0	0.0	10:53	0.1	0.1	-
10:54	0.0	0.0	10:54	0.1	0.1	-
10:55	0.0	0.0	10:55	0.0	0.1	-
10:56	0.0	0.0	10:56	0.0	0.1	-
10:57	0.0	0.0	10:57	0.0	0.0	-
10:58	0.0	0.0	10:58	0.0	0.0	-
10:59	0.0	0.0	10:59	0.0	0.0	-
11:00	0.0	0.0	11:00	0.0	0.0	-
11:01	0.0	0.0	11:01	0.0	0.0	-
11:02	0.0	0.0	11:02	0.0	0.0	-
11:03	0.0	0.0	11:03	0.0	0.0	-
11:04	0.0	0.0	11:04	0.0	0.0	-
11:05	0.0	0.0	11:05	0.0	0.0	-
11:06	0.0	0.0	11:06	0.0	0.0	-
11:07	0.0	0.0	11:07	0.0	0.0	-
11:08	0.0	0.0	11:08	0.0	0.0	-
11:09	0.0	0.0	11:09	0.0	0.0	-
11:10	0.0	0.0	11:10	0.0	0.0	-
11:11	0.0	0.0	11:11	0.0	0.0	-
11:12	0.0	0.0	11:12	0.0	0.0	-
11:13	0.0	0.0	11:13	0.0	0.0	-
11:14	0.0	0.0	11:14	0.0	0.0	-
11:15	0.0	0.0	11:15	0.0	0.0	-
11:16	0.0	0.0	11:16	0.0	0.0	-
11:17	0.0	0.0	11:17	0.0	0.0	-
11:18	0.0	0.0	11:18	0.0	0.0	-
11:19	0.0	0.0	11:19	0.1	0.0	-

PID DATA						
Upwind			Downwind			Exceeds VOCs Alarm Limits
Time	VOC (ppm)	15-Minute Average	Time	VOC (ppm)	15-Minute Average	
11:20	0.0	0.0	11:20	0.1	0.0	-
11:21	0.0	0.0	11:21	0.1	0.1	-
11:22	0.0	0.0	11:22	0.1	0.1	-
11:23	0.0	0.0	11:23	0.1	0.1	-
11:24	0.0	0.0	11:24	0.1	0.1	-
11:25	0.0	0.0	11:25	0.1	0.1	-
11:26	0.0	0.0	11:26	0.1	0.1	-
11:27	0.0	0.0	11:27	0.2	0.1	-
11:28	0.0	0.0	11:28	0.2	0.1	-
11:29	0.0	0.0	11:29	0.2	0.1	-
11:30	0.0	0.0	11:30	0.2	0.1	-
11:31	0.0	0.0	11:31	0.1	0.1	-
11:32	0.0	0.0	11:32	0.1	0.1	-
11:33	0.0	0.0	11:33	0.1	0.1	-
11:34	0.0	0.0	11:34	0.1	0.1	-
11:35	0.0	0.0	11:35	0.1	0.1	-
11:36	0.0	0.0	11:36	0.1	0.1	-
11:37	0.0	0.0	11:37	0.1	0.1	-
11:38	0.0	0.0	11:38	0.1	0.1	-
11:39	0.0	0.0	11:39	0.1	0.1	-
11:40	0.0	0.0	11:40	0.1	0.1	-
11:41	0.0	0.0	11:41	0.1	0.1	-
11:42	0.0	0.0	11:42	0.1	0.1	-
11:43	0.0	0.0	11:43	0.1	0.1	-
11:44	0.0	0.0	11:44	0.0	0.1	-
11:45	0.0	0.0	11:45	0.0	0.1	-
11:46	0.0	0.0	11:46	0.0	0.0	-
11:47	0.0	0.0	11:47	0.0	0.0	-
11:48	0.0	0.0	11:48	0.0	0.0	-
11:49	0.0	0.0	11:49	0.0	0.0	-
11:50	0.0	0.0	11:50	0.0	0.0	-
11:51	0.0	0.0	11:51	0.0	0.1	-
11:52	0.0	0.0	11:52	0.0	0.1	-
11:53	0.0	0.0	11:53	0.0	0.1	-
11:54	0.0	0.0	11:54	0.2	0.1	-
11:55	0.0	0.0	11:55	0.2	0.1	-
11:56	0.0	0.0	11:56	0.2	0.1	-
11:57	0.0	0.0	11:57	0.2	0.1	-
11:58	0.0	0.0	11:58	0.2	0.1	-
11:59	0.0	0.0	11:59	0.2	0.1	-
12:00	0.0	0.0	12:00	0.2	0.2	-
12:01	0.0	0.0	12:01	0.2	0.2	-
12:02	0.0	0.0	12:02	0.2	0.2	-
12:03	0.0	0.0	12:03	0.2	0.2	-
12:04	0.0	0.0	12:04	0.2	0.2	-
12:05	0.0	0.0	12:05	0.2	0.2	-
12:06	0.0	0.0	12:06	0.2	0.2	-
12:07	0.0	0.0	12:07	0.2	0.2	-
12:08	0.0	0.0	12:08	0.2	0.2	-
12:09	0.0	0.0	12:09	0.2	0.2	-
12:10	0.0	0.0	12:10	0.2	0.2	-
12:11	0.0	0.0	12:11	0.2	0.2	-
12:12	0.0	0.0	12:12	0.2	0.2	-
12:13	0.0	0.0	12:13	0.2	0.2	-
12:14	0.0	0.0	12:14	0.2	0.2	-
12:15	0.0	0.0	12:15	0.2	0.2	-
12:16	0.0	0.0	12:16	0.2	0.2	-
12:17	0.0	0.0	12:17	0.2	0.2	-
12:18	0.0	0.0	12:18	0.2	0.2	-
12:19	0.0	0.0	12:19	0.2	0.2	-
12:20	0.0	0.0	12:20	0.2	0.2	-
12:21	0.0	0.0	12:21	0.2	0.2	-
12:22	0.0	0.0	12:22	0.2	0.2	-
12:23	0.0	0.0	12:23	0.1	0.2	-
12:24	0.0	0.0	12:24	0.1	0.2	-
12:25	0.0	0.0	12:25	0.1	0.1	-
12:26	0.0	0.0	12:26	0.1	0.1	-
12:27	0.0	0.0	12:27	0.1	0.1	-
12:28	0.0	0.0	12:28	0.1	0.1	-
12:29	0.0	0.0	12:29	0.1	0.1	-
12:30	0.0	0.0	12:30	0.1	0.1	-
12:31	0.0	0.0	12:31	0.1	0.1	-
12:32	0.0	0.0	12:32	0.1	0.1	-
12:33	0.0	0.0	12:33	0.1	0.1	-
12:34	0.0	0.0	12:34	0.1	0.1	-
12:35	0.0	0.0	12:35	0.1	0.1	-
12:36	0.0	0.0	12:36	0.1	0.1	-
12:37	0.0	0.0	12:37	0.1	0.1	-
12:38	0.0	0.0	12:38	0.1	0.1	-
12:39	0.0	0.0	12:39	0.1	0.1	-
12:40	0.0	0.0	12:40	0.1	0.1	-
12:41	0.0	0.0	12:41	0.1	0.1	-
12:42	0.0	0.0	12:42	0.2	0.1	-
12:43	0.0	0.0	12:43	0.2	0.1	-

PID DATA						
Upwind			Downwind			Exceeds VOCs Alarm Limits
Time	VOC (ppm)	15-Minute Average	Time	VOC (ppm)	15-Minute Average	
12:44	0.0	0.0	12:44	0.2	0.1	-
12:45	0.0	0.0	12:45	0.2	0.1	-
12:46	0.0	0.0	12:46	0.1	0.1	-
12:47	0.0	0.0	12:47	0.1	0.1	-
12:48	0.0	0.0	12:48	0.1	0.1	-
12:49	0.0	0.0	12:49	0.1	0.1	-
12:50	0.0	0.0	12:50	0.1	0.1	-
12:51	0.0	0.0	12:51	0.1	0.1	-
12:52	0.0	0.0	12:52	0.1	0.1	-
12:53	0.0	0.0	12:53	0.1	0.1	-
12:54	0.0	0.0	12:54	0.1	0.1	-
12:55	0.0	0.0	12:55	0.1	0.1	-
12:56	0.0	0.0	12:56	0.1	0.1	-
12:57	0.0	0.0	12:57	0.1	0.1	-
12:58	0.0	0.0	12:58	0.1	0.1	-
12:59	0.0	0.0	12:59	0.0	0.1	-
13:00	0.0	0.0	13:00	0.0	0.1	-
13:01	0.0	0.0	13:01	0.0	0.0	-
13:02	0.0	0.0	13:02	0.0	0.0	-
13:03	0.0	0.0	13:03	0.0	0.0	-
13:04	0.0	0.0	13:04	0.0	0.0	-
13:05	0.0	0.0	13:05	0.0	0.0	-
13:06	0.0	0.0	13:06	0.0	0.0	-
13:07	0.0	0.0	13:07	0.0	0.0	-
13:08	0.0	0.0	13:08	0.0	0.0	-
13:09	0.0	0.0	13:09	0.0	0.0	-
13:10	0.0	0.0	13:10	0.0	0.0	-
13:11	0.0	0.0	13:11	0.0	0.0	-
13:12	0.0	0.0	13:12	0.0	0.0	-
13:13	0.0	0.0	13:13	0.0	0.0	-
13:14	0.0	0.0	13:14	0.0	0.0	-
13:15	0.0	0.0	13:15	0.0	0.0	-
13:16	0.0	0.0	13:16	0.0	0.0	-
13:17	0.0	0.0	13:17	0.0	0.0	-
13:18	0.0	0.0	13:18	0.0	0.0	-
13:19	0.0	0.0	13:19	0.0	0.0	-
13:20	0.0	0.0	13:20	0.0	0.0	-
13:21	0.0	0.0	13:21	0.0	0.0	-
13:22	0.0	0.0	13:22	0.0	0.0	-
13:23	0.0	0.0	13:23	0.0	0.0	-
13:24	0.0	0.0	13:24	0.0	0.0	-
13:25	0.0	0.0	13:25	0.0	0.0	-
13:26	0.0	0.0	13:26	0.0	0.0	-
13:27	0.0	0.0	13:27	0.0	0.0	-
13:28	0.0	0.0	13:28	0.0	0.0	-
13:29	0.0	0.0	13:29	0.0	0.0	-
13:30	0.0	0.0	13:30	0.0	0.0	-
13:31	0.0	0.0	13:31	0.0	0.0	-
13:32	0.0	0.0	13:32	0.0	0.0	-
13:33	0.0	0.0	13:33	0.0	0.0	-
13:34	0.0	0.0	13:34	0.0	0.0	-
13:35	0.0	0.0	13:35	0.0	0.0	-
13:36	0.0	0.0	13:36	0.0	0.0	-
13:37	0.0	0.0	13:37	0.0	0.0	-
13:38	0.0	0.0	13:38	0.0	0.0	-
13:39	0.0	0.0	13:39	0.0	0.0	-
13:40	0.0	0.0	13:40	0.0	0.0	-
13:41	0.0	0.0	13:41	0.0	0.0	-
13:42	0.0	0.0	13:42	0.0	0.0	-
13:43	0.0	0.0	13:43	0.0	0.0	-
13:44	0.0	0.0	13:44	0.0	0.0	-
13:45	0.0	0.0	13:45	0.0	0.0	-
13:46	0.0	0.0	13:46	0.0	0.0	-
13:47	0.0	0.0	13:47	0.0	0.0	-
13:48	0.0	0.0	13:48	0.0	0.0	-
13:49	0.0	0.0	13:49	0.0	0.0	-
13:50	0.0	0.0	13:50	0.0	0.0	-
13:51	0.0	0.0	13:51	0.0	0.0	-
13:52	0.0	0.0	13:52	0.0	0.0	-
13:53	0.0	0.0	13:53	0.0	0.0	-
13:54	0.0	0.0	13:54	0.0	0.0	-
13:55	0.0	0.0	13:55	0.0	0.0	-
13:56	0.0	0.0	13:56	0.0	0.0	-
13:57	0.0	0.0	13:57	0.0	0.0	-
13:58	0.0	0.0	13:58	0.0	0.0	-
13:59	0.0	0.0	13:59	0.0	0.0	-

PID DATA						
Upwind			Downwind			Exceeds VOCs Alarm Limits
Time	VOC (ppm)	15-Minute Average	Time	VOC (ppm)	15-Minute Average	
14:00	0.0	0.0	14:00	0.0	0.0	-
14:01	0.0	0.0	14:01	0.0	0.0	-
14:02	0.0	0.0	14:02	0.0	0.0	-
14:03	0.0	0.0	14:03	0.0	0.0	-
14:04	0.0	0.0	14:04	0.0	0.0	-
14:05	0.0	0.0	14:05	0.0	0.0	-
14:06	0.0	0.0	14:06	0.0	0.0	-
14:07	0.0	0.0	14:07	0.0	0.0	-
14:08	0.0	0.0	14:08	0.0	0.0	-
14:09	0.0	0.0	14:09	0.0	0.0	-
14:10	0.0	0.0	14:10	0.0	0.0	-
14:11	0.0	0.0	14:11	0.0	0.0	-
14:12	0.0	0.0	14:12	0.0	0.0	-
14:13	0.0	0.0	14:13	0.0	0.0	-
14:14	0.0	0.0	14:14	0.0	0.0	-
14:15	0.0	0.0	14:15	0.0	0.0	-
14:16	0.0	0.0	14:16	0.0	0.0	-
14:17	0.0	0.0	14:17	0.0	0.0	-
14:18	0.0	0.0	14:18	0.0	0.0	-
14:19	0.0	0.0	14:19	0.0	0.0	-
14:20	0.0	0.0	14:20	0.0	0.0	-
14:21	0.0	0.0	14:21	0.0	0.0	-
14:22	0.0	0.0	14:22	0.0	0.0	-
14:23	0.0	0.0	14:23	0.0	0.0	-
14:24	0.0	0.0	14:24	0.0	0.0	-
14:25	0.0	0.0	14:25	0.0	0.0	-
14:26	0.0	0.0	14:26	0.0	0.0	-
14:27	0.0	0.0	14:27	0.0	0.0	-
14:28	0.0	0.0	14:28	0.0	0.0	-
14:29	0.0	0.0	14:29	0.0	0.0	-
14:30	0.0	0.0	14:30	0.0	0.0	-
14:31	0.0	0.0	14:31	0.0	0.0	-
14:32	0.0	0.0	14:32	0.0	0.0	-
14:33	0.0	0.0	14:33	0.0	0.0	-
14:34	0.0	0.0	14:34	0.0	0.0	-
14:35	0.0	0.0	14:35	0.0	0.0	-
14:36	0.0	0.0	14:36	0.0	0.0	-
14:37	0.0	0.0	14:37	0.0	0.0	-
14:38	0.0	0.0	14:38	0.0	0.0	-
14:39	0.0	0.0	14:39	0.0	0.0	-
14:40	0.0	0.0	14:40	0.0	0.0	-
14:41	0.0	0.0	14:41	0.0	0.0	-
14:42	0.0	0.0	14:42	0.0	0.0	-
14:43	0.0	0.0	14:43	0.0	0.0	-
14:44	0.0	0.0	14:44	0.0	0.0	-
14:45	0.0	0.0	14:45	0.0	0.0	-
14:46	0.0	0.0	14:46	0.0	0.0	-
14:47	0.0	0.0	14:47	0.0	0.0	-
14:48	0.0	0.0	14:48	0.0	0.0	-
14:49	0.0	0.0	14:49	0.0	0.0	-
14:50	0.0	0.0	14:50	0.0	0.0	-
14:51	0.0	0.0	14:51	0.0	0.0	-
14:52	0.0	0.0	14:52	0.0	0.0	-
14:53	0.0	0.0	14:53	0.0	0.0	-
14:54	0.0	0.0	14:54	0.0	0.0	-
14:55	0.0	0.0	14:55	0.0	0.0	-
14:56	0.0	0.0	14:56	0.0	0.0	-
14:57	0.0	0.0	14:57	0.0	0.0	-
14:58	0.0	0.0	14:58	0.0	0.0	-
14:59	0.0	0.0	14:59	0.0	0.0	-
15:00	0.0	0.0	15:00	0.0	0.0	-
15:01	0.0	0.0	15:01	0.0	0.0	-
15:02	0.0	0.0	15:02	0.0	0.0	-
15:03	0.0	0.0	15:03	0.0	0.0	-
15:04	0.0	0.0	15:04	0.0	0.0	-
15:05	0.0	0.0	15:05	0.0	0.0	-
15:06	0.0	0.0	15:06	0.0	0.0	-