

# **APPENDIX R**

## **PHOTO LOG OF SITE WORK**

1. Photo log of site work from June 2005 to February 2006



**Photograph No. 1: Welcome to the Future Site of River Place II.**



**Photograph No. 2: June 2005 - View of park area (view north).**



**Photograph No. 3: June 2005 - View of park area (view south). Note poles to be used for support of blue perimeter wall.**



**Photograph No. 4: June 2005 - Working to remove existing surface materials (view west).**





**Photograph No. 5: June 2005 - Filter fabric emplaced in front of Gate #1 (view towards northwest).**



**Photograph No. 6: June 2005 - Placing fill material over filter fabric to prepare truck wash area.**





**Photograph No. 7: June 2005 - Assembling plywood barriers around on-site tree trunks.**



**Photograph No. 8: June 2005 - Assembling the truck wash (view north onto West 42<sup>nd</sup> Street).**



**Photograph No. 9: July 15, 2005 - Installing sheet pile section no. 1 in the southeast corner of site.**

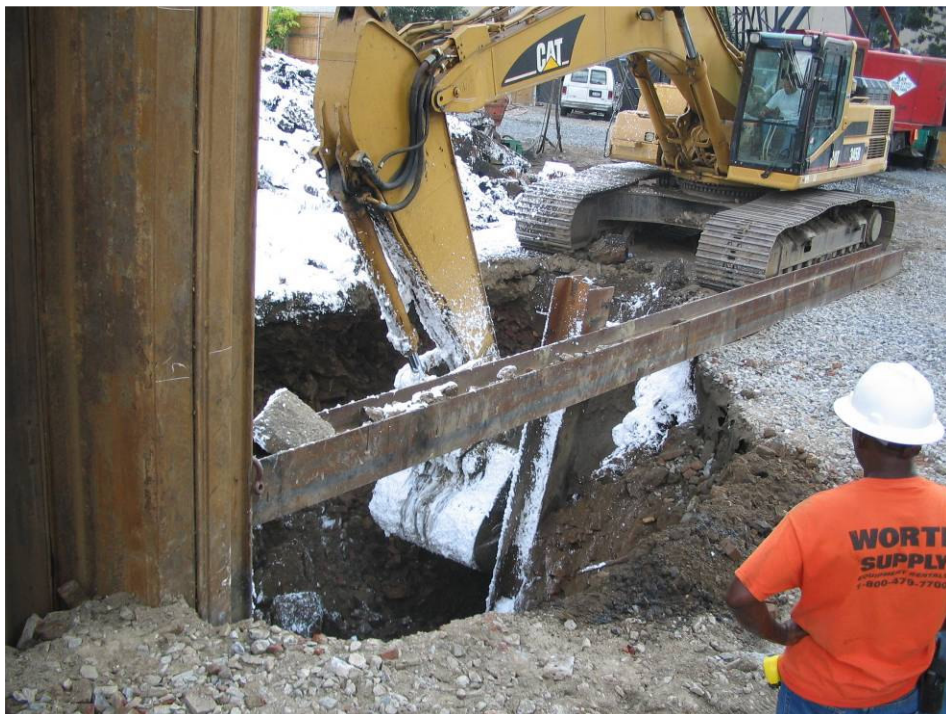


**Photograph No. 10: July 25, 2005 - Aerial view of site (view east) from RiverPlace I 32<sup>nd</sup> floor observation deck.**





**Photograph No. 11: August 2005 - Stockpile of C&D material being wetted down to minimize generation of dust.**



**Photograph No. 12: August 2005 - Pre-excavation trenching to facilitate installation of sheeting.**





**Photograph No. 13: August 2005 - Preparing sheeting sections with Adeka Ultra Seal A-50 waterproof sealant.**



**Photograph No. 14: August 6, 2005 - Exposed section of MGP holder wall being excavated and simultaneously wetted down to suppress generation of dust.**





**Photograph No. 15: August 9, 2005 - Sheet piling installation occurring in southwest corner of Site and proceeding towards the east.**



**Photograph No. 16: View of typical Air Monitoring Station and telemetry with colored flag indicating current action level (green; VOCs < 3.7 ppm and particulates < 113 ug/m<sup>3</sup>).**





**Photograph No. 17: August 9, 2005 - Collecting sample of contents from UST discovered in northeast portion of Site.**



**Photograph No. 18: August 10, 2005 - An early version of zone demarcation using caution tape (view towards southeast). Note decontamination pools present at zone boundary.**





**Photograph No. 19: August 12, 2005 - View of exposed section of northeast MGP holder wall (view southwest).**



**Photograph No. 20: August 15, 2005 - View of exposed section of northeast MGP holder wall (view west). Note surface water accumulation and/or exposed groundwater.**





**Photograph No. 21: August 15, 2005 - Aerial view of site (view east) from RiverPlace I 32<sup>nd</sup> floor observation deck. Note the tops of the northeast and southeast MGP holder walls are visible where the two holders are conjoined.**



**Photograph No. 22: August 2005 - Typical view of material load-out operations (view towards southwest).**





**Photograph No. 23: August 16, 2005 - No. 2 filter sand being placed around screened interval of dewatering well during well installation.**



**Photograph No. 24: August 16, 2005 - View of excavation showing exposed northeast MGP holder wall, various H-piles and concrete filled pipe piles (view east). Note dewatering treatment system in background atop eastern sheeting line.**



**Photograph No. 25: August 2005 - Typical view of foam odor suppressant covering temporary stockpile.**



**Photograph No. 26: August 18, 2005 - View of excavation showing exposed northeast MGP holder wall, various H-piles and concrete filled pipe piles (view west).**





**Photograph No. 27: August 18, 2005 - Moretrench's Watson 3-1678 track mounted drill rig advancing borehole for northwestern dewatering well (Well #4).**



**Photograph No. 28: August 25, 2005 – Additional USTs discovered in northeast portion of Site having contents vacuumed out and cleaned for decommissioning.**





**Photograph No. 29: August 29, 2005 - View of seats for waler installation along southern sheeting line (view east).**



**Photograph No. 30: August 31, 2005 - Workers decontaminating PPE (boots) in decon pools.**





**Photograph No. 31: August 2005 - Typical view of dewatering well assemblage.**



**Photograph No. 32: August 31, 2005 - Worker applying foam odor suppressant to area where USTs were discovered and decommissioned (view east).**



**Photograph No. 33: The foam machine.**



**Photograph No. 34: September 2, 2005 - View of excavation (view west). Note position of foam machine along northern site perimeter.**





**Photograph No. 35: September 6, 2005 - View of material load-out in progress.**



**Photograph No. 36: September 6, 2005 - View of Piaan misting system in action (view east along northern perimeter fencing).**



**Photograph No. 37: September 7, 2005 - Worker covering material stockpile with foam.**



**Photograph No. 38: September 9, 2005 - View of wood debris (cribbing and planking) present within excavation (wood present primarily at a depth of approximately 15 to 18 feet below ground surface).**





**Photograph No. 39: September 10, 2005 - Trench box excavation in progress along northern site perimeter (view east).**



**Photograph No. 40: September 10, 2005 - Another view of the trench box excavation.**





**Photograph No. 41: September 12, 2005 - Workers keeping area along eastern end of Site covered with foam (area where USTs were discovered).**



**Photograph No. 42: September 13, 2005 - Trench box secured at conclusion of days activities. Note the section of steel plating used to help reinforce the outside edge of the trench box excavation.**





**Photograph No. 43: September 13, 2005 - Moretrench drilling 4-inch diameter angled boreholes (45-degree angle) through sheeting for tie-back installation.**



**Photograph No. 44: September 14, 2005 - Dust cloud generated during delivery and offloading of Calciment/kiln dust used for stabilization of excavated material.**



**Photograph No. 45: View of decontamination hand wash and eye wash station.**



**Photograph No. 46: September 16, 2005 - View showing mesh tarp being installed over top of material load within truck bed. A solid tarp is subsequently installed over the top of the mesh tarp.**





**Photograph No. 47: September 19, 2005 - View showing angled boring for tie-back installation in progress.**



**Photograph No. 48: September 20, 2005 - View showing continued progress with trench box activities.**





**Photograph No. 49: September 21, 2005 - Workers keeping area covered with foam during excavation activities.**



**Photograph No. 50: September 21, 2005 - View showing working platform left in place along sheeting wall allowing work to be done on walers in preparation for installation of tie-backs. Note truncated section of MGP holder wall visible within platform.**





**Photograph No. 51: September 22, 2005 - Another view of working platform temporarily left in place along sheeting line (view towards southeast).**



**Photograph No. 52: September 22, 2005 - Improved version of work zone demarcation and safety fencing using concrete Jersey barriers and caution tape.**





**Photograph No. 53: September 25, 2005 - View of Moretrench performing toe pin installation.**



**Photograph No. 54: September 26, 2005 - Welders securing walers. Note dewatering treatment system atop eastern sheeting wall.**





**Photograph No. 55: View of blue fencing surrounding Site perimeter (view towards northwest).**



**Photograph No. 56: September 29, 2005 - Tie-back anchor tendon being installed into 45-degree angled borehole.**



**Photograph No. 57: October 3, 2005 - Testing tie-back installation using hydraulic jack and dial indicator to measure elongation.**



**Photograph No. 58: October 12, 2005 - Surface water accumulation from several days of heavy precipitation (view towards northwest).**





**Photograph No. 59: October 14, 2005 - View of surface water accumulation within northeast MGP holder wall remnants. Note presence of hoses and sump pumps used to assist in dewatering efforts.**



**Photograph No. 60: Close-up view of tie-back locked off and set in place with exposed terminus cut to length.**





**Photograph No. 61: October 19, 2005 - Aerial view of site (view east) from RiverPlace I 32<sup>nd</sup> floor observation deck.**



**Photograph No. 62: October 19, 2005 - Aerial view zoomed into to highlight the exposed section of the northeast and southeast MGP holder walls.**





**Photograph No. 63: October 20, 2005 - View of material load-out occurring along the southern perimeter of the Site (view towards northwest).**



**Photograph No. 64: October 20, 2005 - Material load-out occurring along southern perimeter of Site (view towards southeast). Note southeast dewatering well in background of photo (Well #2).**



**Photograph No. 65: October 20, 2005 - View showing exposed former MGP-related structure (view towards northeast). Note foam odor suppressant covering area.**



**Photograph No. 66: View of the truck wash in action.**





**Photograph No. 67: October 25, 2005 - Excavators working in tandem along southern perimeter of Site. Note presence of wood debris (cribbing and planking).**



**Photograph No. 68: October 25, 2005 - Typical dust generated by excavator gathering scoop of Calciment/kiln dust for material stabilization.**



**Photograph No. 69: October 27, 2005 - Another view of material load-out operations occurring along southern perimeter of Site. Note how working platform has been removed progressing towards the west.**



**Photograph No. 70: October 28, 2005 - Trucker installing solid tarp over material load before departing from Site.**





**Photograph No. 71: November 1, 2005 - View of excavation looking northeast. Skanska/Underpinning drill rig can be seen clearing subsurface obstructions along northern perimeter.**



**Photograph No. 72: November 1, 2005 - View of excavation looking east. Note that southernmost area of Site has been excavated to depth. Note surface water accumulation present in center of excavation.**





**Photograph No. 73: November 2, 2005 - Close-up view of Skanska/Underpinning drill rig clearing subsurface obstacles to facilitate sheeting installation along the northern perimeter. Note cuttings being deflected downwards by shield on drill casing.**



**Photograph No. 74: November 5, 2005 - Aerial view of site (view east) from RiverPlace I 32<sup>nd</sup> floor observation deck.**





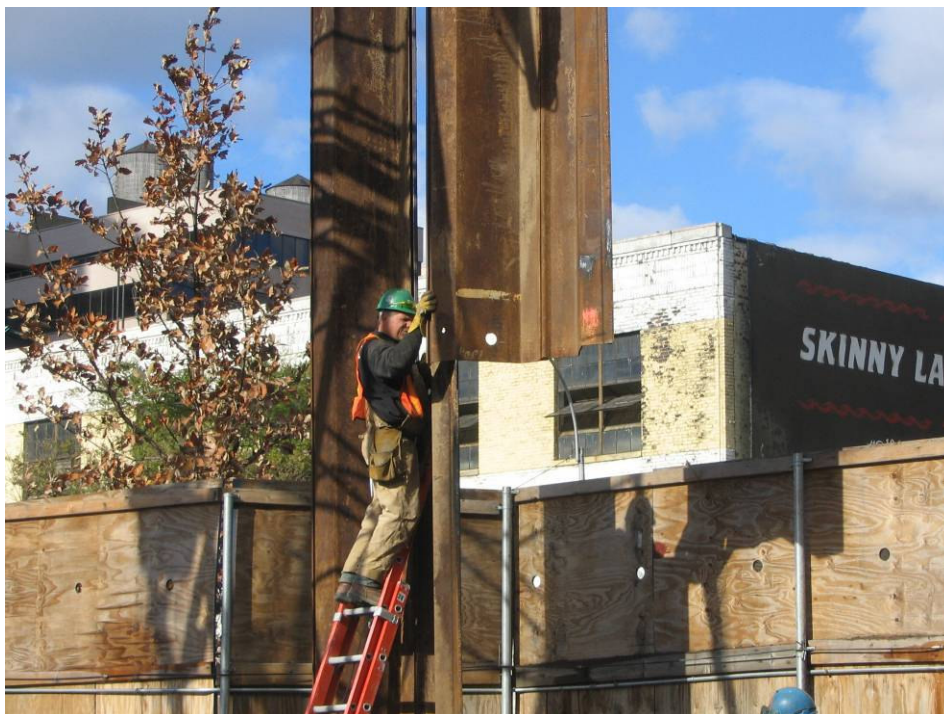
**Photograph No. 75: November 7, 2005 - View of first load of imported RCA material atop section of Mirafi 500 geotextile fabric. RCA delivered through Gate #4.**



**Photograph No. 76: November 9, 2005 - Continued stockpiling of RCA material. Bulldozer on top of stockpile was used to spread out the RCA material.**



**Photograph No. 77: November 10, 2005 - Sheeting sections (pieces to be installed along northern perimeter) staged for use with plastic sheeting to keep them dry.**

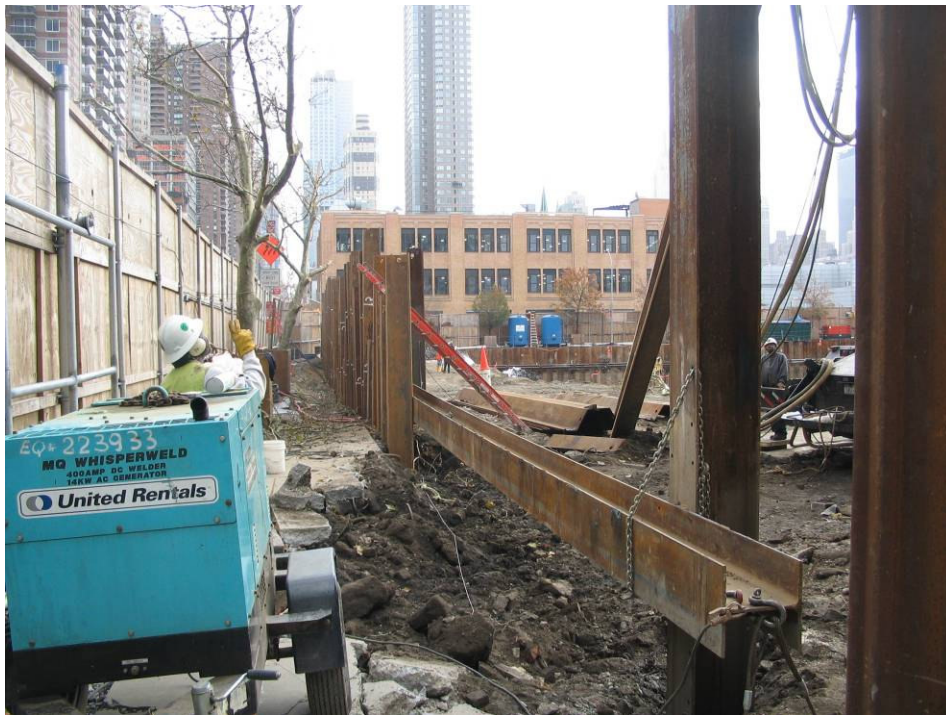


**Photograph No. 78: November 11, 2005 - Worker guiding grooved channels of sheeting sections together during installation.**





**Photograph No. 79: November 11, 2005 - Close-up aerial view of site (view east) from RiverPlace I 32<sup>nd</sup> floor observation deck. View is of sheeting installation occurring along northern perimeter.**



**Photograph No. 80: November 16, 2005 - View of horizontal guide beam used to align sheeting sections during installation (view east).**



**Photograph No. 81: November 17, 2005 - View of RCA stockpile before beginning to spread material across extent of excavation.**



**Photograph No. 82: November 28, 2005 - View of dewatering treatment system carbon vessels prepped for winter with insulated jackets.**





**Photograph No. 83: December 9, 2005 - Workers cutting open the UST discovered on 11/18/05 to clean out any residual contents and decommission.**



**Photograph No. 84: View of the decontamination station at the exit of the Site exclusion zone.**





**Photograph No. 85: December 30, 2005 - Close-up aerial view of site (view east) from RiverPlace I 32<sup>nd</sup> floor observation deck. View is of excavation occurring along northern perimeter now that sheeting installation is complete.**



**Photograph No. 86: January 9, 2006 - Foaming during excavation along northern sheeting line.**





**Photograph No. 87: January 10, 2006 - View of reconfigured material load-out area now that trucks are exiting Site via Gate #2 on West 41<sup>st</sup> Street (view north). Note steel plates positioned under truck.**



**Photograph No. 88: January 10, 2006 - View of excavator working to keep MGP material segregated from RCA stockpile.**





**Photograph No. 89: January 10, 2006 - Moretrench worker moving mobile sumps to area with surface water accumulation during dewatering activities.**



**Photograph No. 90: January 11, 2006 - Aerial view of site (view east) from RiverPlace I 32<sup>nd</sup> floor observation deck. Note RCA stockpile along southern perimeter.**





**Photograph No. 91: January 12, 2006 - View of excavators working in tandem to load-out material along northern and western perimeter of Site.**



**Photograph No. 92: January 12, 2006 - Foam being applied as excavator works in northwestern corner of Site.**





**Photograph No. 93: January 13, 2006 - View of remnant of northeast MGP holder wall (view towards northwest).**



**Photograph No. 94: January 13, 2006 - View of material load-out operations (view west). Note remnants of former Purifying House are visible underneath the green truck and excavator and under the inclined roadway leading towards Gate #2.**





**Photograph No. 95: January 17, 2006 – Stockpile being covered with plastic sheeting at conclusion of daily activities.**



**Photograph No. 96: View of trucks queued along West 41<sup>st</sup> Street (view west).**



**Photograph No. 97: January 20, 2006 – View of alternate truck wash down operation occurring on stone haul road (trucks are exiting onto West 41<sup>st</sup> Street).**



**Photograph No. 98: January 23, 2006 – RCA being spread out over emplaced Mirafi 500 geotextile fabric (view northeast).**





**Photograph No. 99: January 25, 2006 – Workers spreading Mirafi 500 geotextile fabric over bottom of excavation (view south-southeast).**



**Photograph No. 100: January 26, 2006 – The bulldozer in action spreading out RCA.**



**Photograph No. 101: January 26, 2006 – Material load-out operations occurring along western perimeter (view northwest).**



**Photograph No. 102: January 27, 2006 – Excavating the former Purifying House foundation (view south-southwest).**





**Photograph No. 103: January 30, 2006 – Worker surveying the bottom of excavation before RCA is spread to that area.**

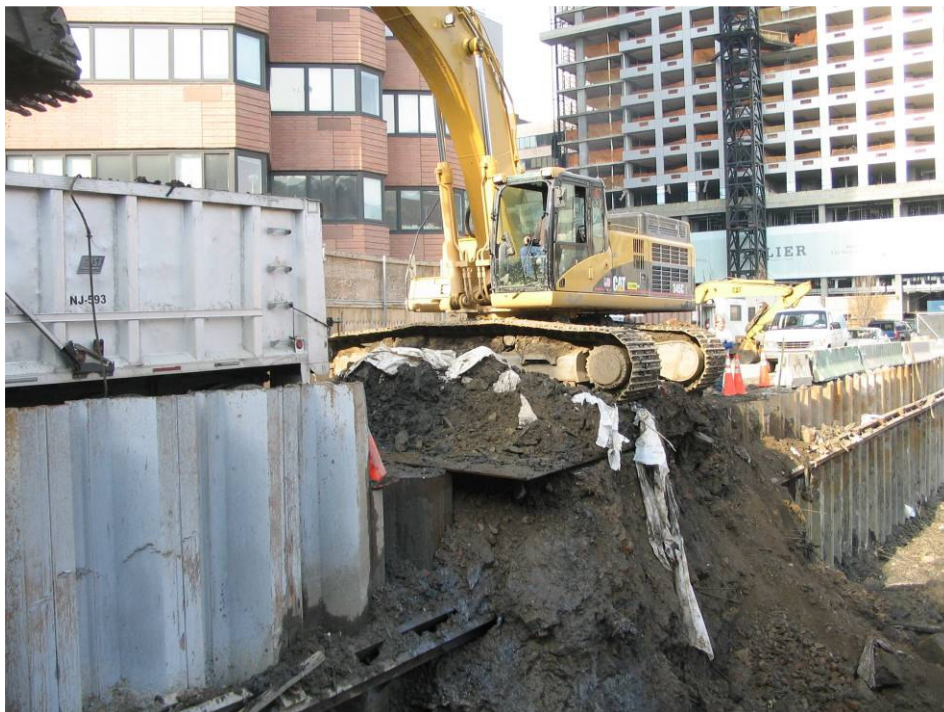


**Photograph No. 104: January 31, 2006 – Worker emplacing Mirafi 500 geotextile fabric atop the westernmost portion of the excavation. Note that this portion of the Site was excavated to approximately el -8.5 (remainder of Site excavated to el -13).**





**Photograph No. 105: January 31, 2006 - Washing truck down at Gate 2 before exiting Site.**



**Photograph No. 106: February 2, 2006 - The last bit of MGP material to be excavated. View is of southwest corner of Site looking towards the northwest.**





**Photograph No. 107: February 3, 2006- Excavator pulling up surface materials in roadway extending from Gate 1 to Gate 2 (view south).**



**Photograph No. 108: February 9, 2006 – Delivery of imported sand from New York Sand and Stone to infill roadway from Gate 1 to Gate 2 (view southeast).**



**Photograph No. 109: February 8, 2006 – View of RCA delivery through Gate 4 (view south).**



**Photograph No. 110: February 10, 2006 – View of roadway between Gate 1 and Gate 2, with fall protection in place, after import of sand from New York Sand and Stone (view south).**





**Photograph No. 111: February 9, 2006 – View of Site at conclusion of field activities (view west).**



**Photograph No. 112: February 9, 2006 – View of Site at conclusion of field activities (view east).**