

Appendix H

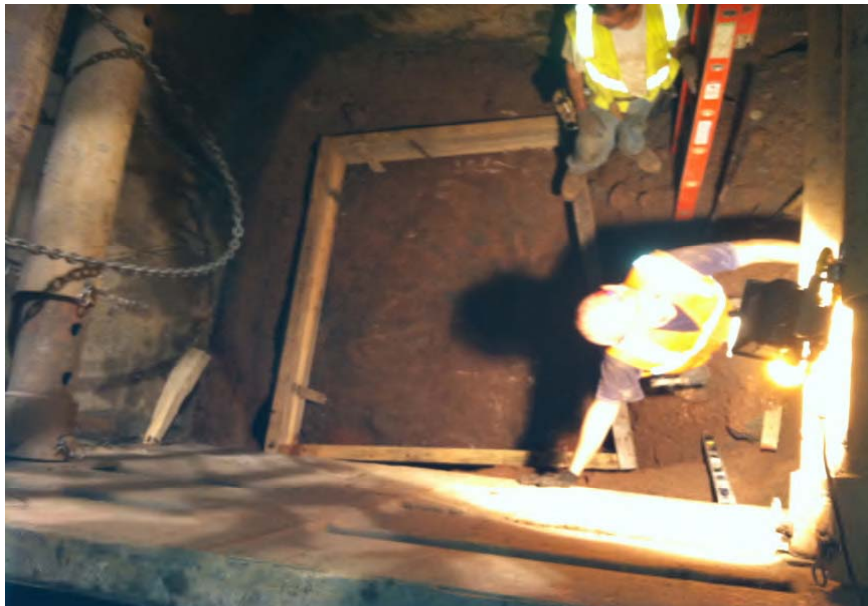
Photograph Log

**West 34th Street
New York, New York
BCP Site #C231049**

BCP Oversight
September 21, 2012



1. Phase III, Area "D" excavated down to bedrock.



2. Phase III, Area "D" excavated down to bedrock.



Environmental Management & Consulting

**West 34th Street
New York, New York
BCP Site #C231049**

BCP Oversight
September 24, 2012



1. Area "B" excavated down to bedrock



Environmental Management & Consulting

**West 34th Street
New York, New York
BCP Site #C231049**

BCP Oversight
September 25, 2012



1. Section A of Phase 3 at clean bedrock



2. Section C of Phase 3 at clean bedrock



3. Section E of Phase 3 at clean bedrock



Environmental Management & Consulting

**West 34th Street
New York, New York
BCP Site #C231049**

BCP Oversight
September 26th, 2012



1. Excavation of the remaining sections of Phase #2



2. Excavation of the remaining sections of Phase #2



Environmental Management & Consulting

**West 34th Street
New York, New York
BCP Site #C231049**

BCP Oversight
September 27th, 2012



1. Phase II area excavated and cleaned to bedrock.



2. Phase II area excavated and cleaned to bedrock.



Environmental Management & Consulting

**West 34th Street
New York, New York
BCP Site #C231049**

BCP Oversight
September 28th, 2012



1. Phase II area excavated and cleaned to bedrock.



2. Phase II area excavated and cleaned to bedrock.



Environmental Management & Consulting

**West 34th Street
New York, New York
BCP Site #C231049
BCP Oversight
October 1st, 2012**



1. Excavation to clean backfill in Phase III and removal of plastic sheeting liner protecting backfill.



2. Backfilling Phase III area to grade.



Environmental Management & Consulting

**West 34th Street
New York, New York
BCP Site #C231049**

BCP Oversight
August 8, 2012



1. Pier # 2 Excavation



2. Pier #2 Exposed bedrock



Environmental Management & Consulting



Environmental Management & Consulting

**West 34th Street
New York, New York
BCP Site #C231049**

BCP Oversight
August 9, 2012



1. Excavation to slightly reduce the grade.



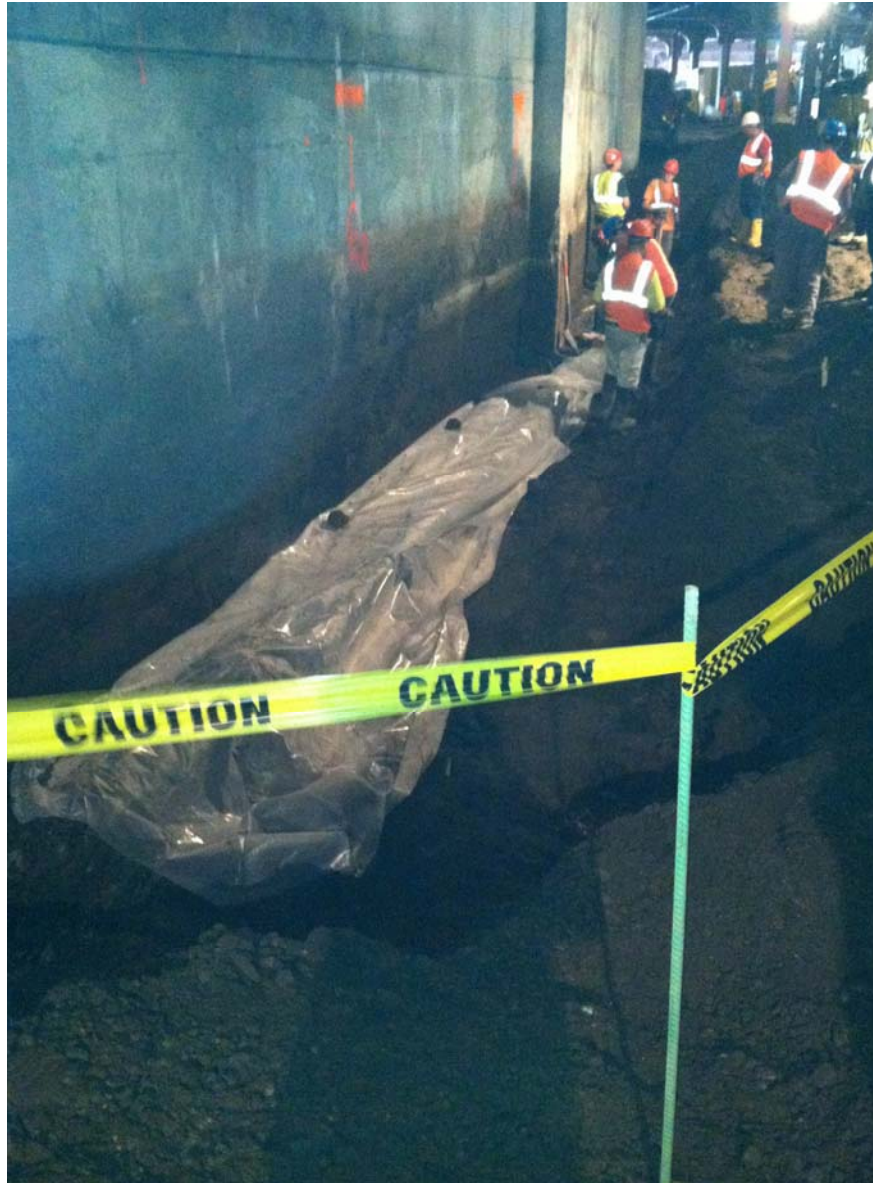
2. Pipe encountered during pier installation.



Environmental Management & Consulting

**West 34th Street
New York, New York
BCP Site #C231049**

BCP Oversight
August 10, 2012



Excavation to reveal the extent of the pipe.



Environmental Management & Consulting

**West 34th Street
New York, New York
BCP Site #C231049**

BCP Oversight
August 14, 2012



1. 16 truckloads of soil were exported to Lincoln Park West Landfill Facility in New Jersey



2. Dust suppression measures were implemented during soil load out



Environmental Management & Consulting

**West 34th Street
New York, New York
BCP Site #C231049**

BCP Oversight
August 15, 2012



1. 16 truckloads of soil were exported to Lincoln Park West Landfill Facility in New Jersey



2. Dust suppression measures were implemented during soil load out



Environmental Management & Consulting

**West 34th Street
New York, New York
BCP Site #C231049**

BCP Oversight
August 16, 2012



1. Minor excavation was done in preparation for Pier #6.



2. The excavation continued by hand-digging.



Environmental Management & Consulting

**West 34th Street
New York, New York
BCP Site #C231049**

BCP Oversight
August 17, 2012



1. Excavation activities being performed via mini excavator.



2. Framing activities at Pier #8.



Environmental Management & Consulting

**West 34th Street
New York, New York
BCP Site #C231049**

BCP Oversight
August 20, 2012



1. Framing activities taking place at Pier #4.



2. Bedrock encountered at Pier #4.



Environmental Management & Consulting

**West 34th Street
New York, New York
BCP Site #C231049**

BCP Oversight
August 21, 2012



1. Bedrock encountered at Pier #7.



2. Dark soils encountered at Pier #9.



Environmental Management & Consulting

**West 34th Street
New York, New York
BCP Site #C231049**

BCP Oversight
August 22, 2012



1. Pier # 11 Excavation



2. Pier #2 Continued excavation of Pier #11 (eventually halted to re-shore excavation and dewater)



Environmental Management & Consulting

**West 34th Street
New York, New York
BCP Site #C231049**

BCP Oversight
August 23, 2012



1. Excavation activities taking place at Pier #11.



2. Bedrock encountered at Pier #11.



Environmental Management & Consulting

**West 34th Street
New York, New York
BCP Site #C231049**

BCP Oversight
August 24, 2012



1. Pier # 11 Exposed bedrock, after additional hand cleaning, just prior to concrete installation



2. Pier #5 Exposed bedrock, prior to concrete installation



Environmental Management & Consulting

**West 34th Street
New York, New York
BCP Site #C231049**

BCP Oversight
August 25, 2012



1. Pier # 12 Exposed bedrock.



2. Trench boxes and frames were used for the Pier's mold prior to concrete installation.



Environmental Management & Consulting

**West 34th Street
New York, New York
BCP Site #C231049**

BCP Oversight
August 27, 2012



1. Pier # 12 Exposed bedrock, after additional hand cleaning, just prior to concrete installation



2. Impacted soils at pier # 10 with moderate odors



Environmental Management & Consulting

**West 34th Street
New York, New York
BCP Site #C231049**

BCP Oversight
August 28, 2012



1. Saturated wood sheeting taken during excavation of Pier #13. Slight to moderate odors.



2. Pier # 13. Encountered pre-existing pier along the west wall



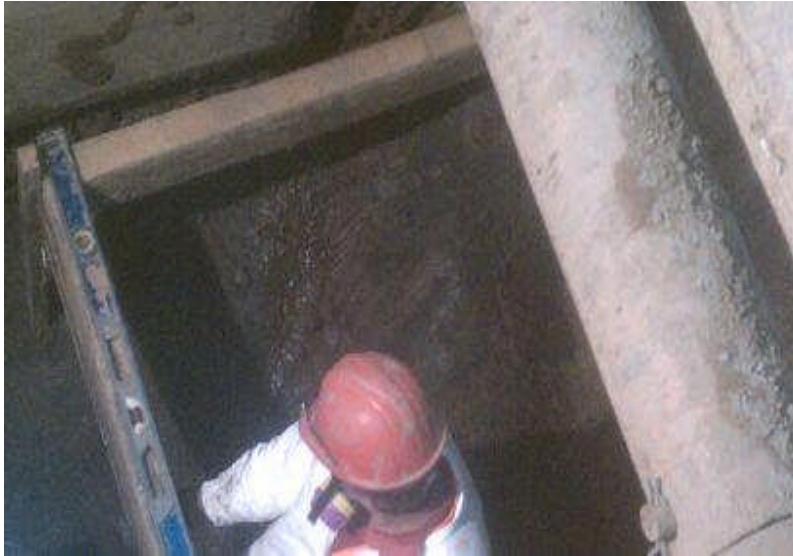
Environmental Management & Consulting



3. Pier #13 excavated down to bedrock.

**West 34th Street
New York, New York
BCP Site #C231049**

BCP Oversight
August 29, 2012



1. Pier #10 excavated to bedrock.



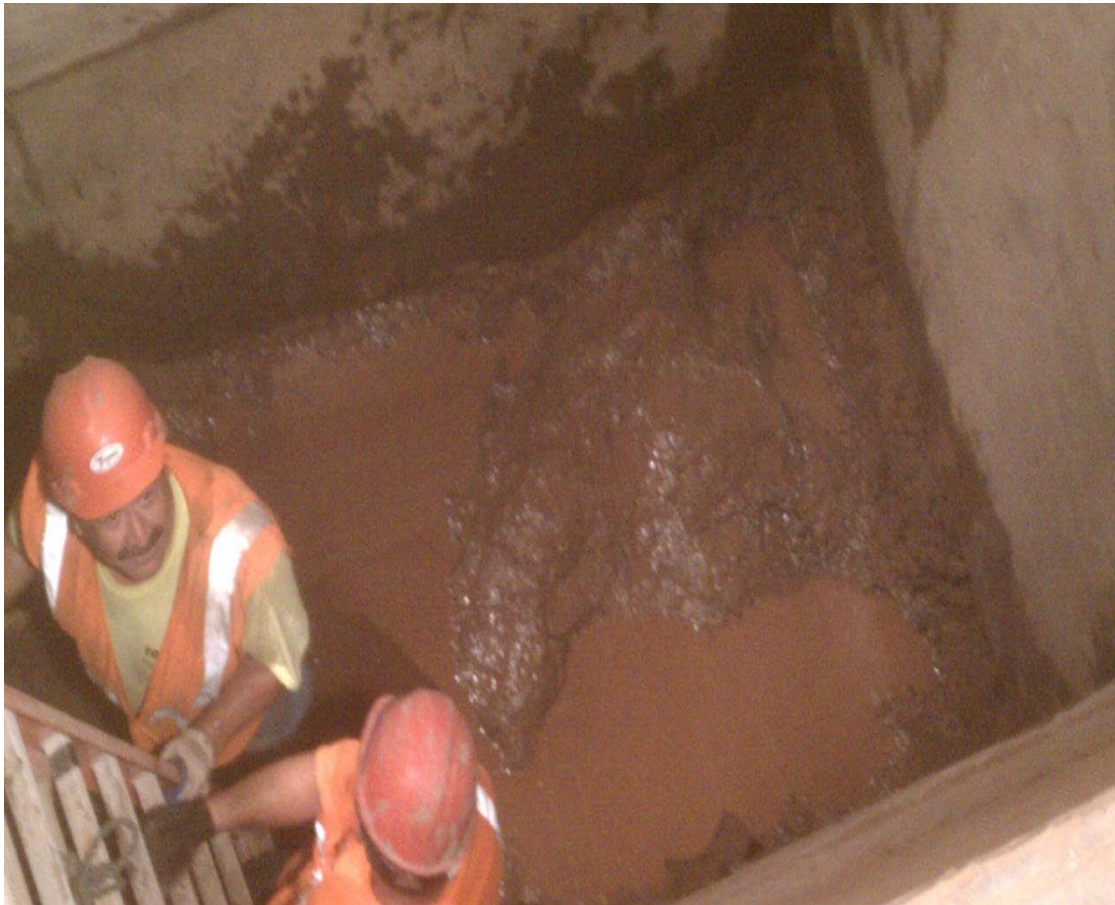
2. Soil excavated from Pier #10. Soil exhibited a petroleum odor.



Environmental Management & Consulting

**West 34th Street
New York, New York
BCP Site #C231049**

BCP Oversight
August 30, 2012



1. Pier # 15 excavated to bedrock depth.



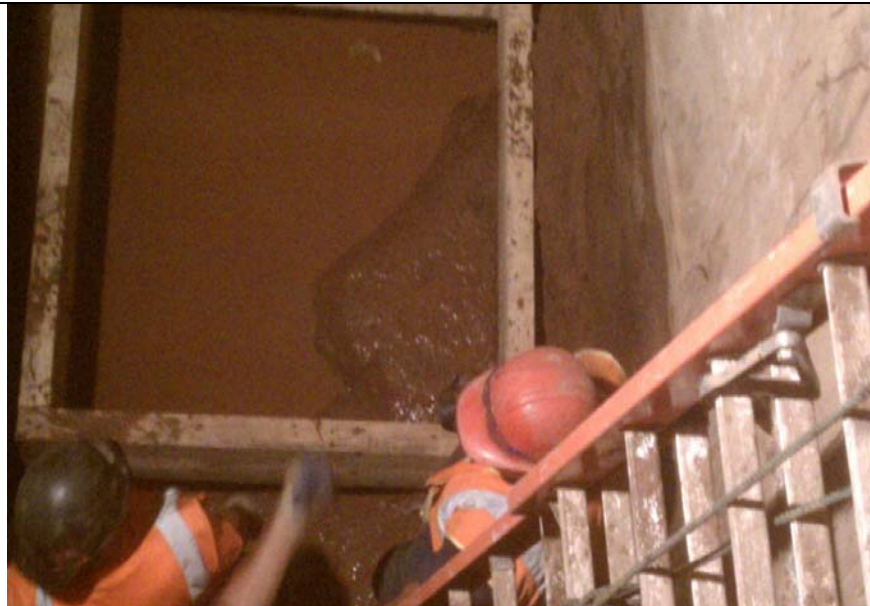
Environmental Management & Consulting

**West 34th Street
New York, New York
BCP Site #C231049**

BCP Oversight
August 31, 2012



1. Pier #14 excavated to bedrock



2. Pier #14 excavated to bedrock



Environmental Management & Consulting

**West 34th Street
New York, New York
BCP Site #C231049**

BCP Oversight
September 5, 2012



1. Phase 4 Excavation at Bedrock.



2. Phase 4 Excavation at Bedrock.



Environmental Management & Consulting

**West 34th Street
New York, New York
BCP Site #C231049**

BCP Oversight
September 6, 2012



1. Phase 4 backfilled with approved fill material.



2. Phase 4 backfilled with approved fill material.



Environmental Management & Consulting

**West 34th Street
New York, New York
BCP Site #C231049**

BCP Oversight
September 7, 2012



1. Phase 4 final load of backfill.



2. Phase 4 backfilled and being compacted at finished grade.



Environmental Management & Consulting

**West 34th Street
New York, New York
BCP Site #C231049**

BCP Oversight
September 10, 2012



1. Existing pier located adjacent to Pier #13 exposed.



2. Hand excavation being conducted in area adjacent to Pier #13 in preparation of tie-backing.



Environmental Management & Consulting

**West 34th Street
New York, New York
BCP Site #C231049**

BCP Oversight
September 11, 2012



1. Stockpile was slightly odorous material which was rejected at Lincoln Park Landfill and returned to the Site.



2. Excavation taking place along north side of Phase I.



Environmental Management & Consulting

**West 34th Street
New York, New York
BCP Site #C231049**

BCP Oversight
September 12, 2012



1. Impacted soil staging area set up to segregate more heavily impacted soil from less impacted soils.



2. Phase I excavation and sheeting activities taking place along east wall and northeast corner.



Environmental Management & Consulting

**West 34th Street
New York, New York
BCP Site #C231049**

BCP Oversight
September 13, 2012



1. Excavation conducted at Phase I.



2. South section of Phase I, pictured excavated to bedrock.



Environmental Management & Consulting

**West 34th Street
New York, New York
BCP Site #C231049**

BCP Oversight
September 14, 2012



1. West side of Phase I, excavated to bedrock.



Environmental Management & Consulting

**West 34th Street
New York, New York
BCP Site #C231049**

BCP Oversight
September 15, 2012



1. Excavation activities taking place in the last uncertified portion of Phase I.



2. Backfilled and certified clean section of Phase I.



Environmental Management & Consulting

**West 34th Street
New York, New York
BCP Site #C231049**

BCP Oversight
September 17, 2012



1. Inspected and certified portion of Phase I – excavated to bedrock.



2. Inspected and certified portion of Phase I – excavated to bedrock.



Environmental Management & Consulting

**West 34th Street
New York, New York
BCP Site #C231049**

BCP Oversight
September 18, 2012



1. Backfilling and compacting activities being conducted at Phase I.



2. Phase I backfilled, viewed to the north.



Environmental Management & Consulting

**West 34th Street
New York, New York
BCP Site #C231049**

BCP Oversight
September 19, 2012



1. North side of Phase II, excavated to bedrock. Inspected and certified by FLS.



2. North side of Phase II, excavated to bedrock. Inspected and certified by FLS.



Environmental Management & Consulting

**West 34th Street
New York, New York
BCP Site #C231049**

BCP Oversight
September 20, 2012



1. Hand clearing activities at Area “F” of Phase III excavation.



2. Area “F” of Phase III excavated down to bedrock.



Environmental Management & Consulting

Bedrock Closure Certification Dates

9/6/2012 – Phase 4

9/14/2012 – 9/17/2012 – Phase I

9/19/2012 – North side of Phase II, vicinity of Pier #8

9/20/2012 – Area F of Phase III

9/21/2012 – Area D of Phase III

9/24/2012 – Area B of Phase III

9/25/2012 – Area A, C and E of Phase III

9/28/2012 – Remainder of Phase II, area in between Piers # 11, 12, 14 and 15.

Bedrock Closure Certification Dates

9/6/2012 – Phase 4

9/14/2012 – 9/17/2012 – Phase I

9/19/2012 – North side of Phase II, vicinity of Pier #8

9/20/2012 – Area F of Phase III

9/21/2012 – Area D of Phase III

9/24/2012 – Area B of Phase III

9/25/2012 – Area A, C and E of Phase III

9/28/2012 – Remainder of Phase II, area in between Piers # 11, 12, 14 and 15.

**West 34th Street
New York, New York
BCP Site #C231049**

BCP Oversight
September 5, 2012



1. Phase 4 Excavation at Bedrock.



2. Phase 4 Excavation at Bedrock.



Environmental Management & Consulting

**West 34th Street
New York, New York
BCP Site #C231049**

BCP Oversight
September 13, 2012



1. Excavation conducted at Phase I.



2. South section of Phase I, pictured excavated to bedrock.



Environmental Management & Consulting

**West 34th Street
New York, New York
BCP Site #C231049**

BCP Oversight
September 14, 2012



1. West side of Phase I, excavated to bedrock.



Environmental Management & Consulting

**West 34th Street
New York, New York
BCP Site #C231049**

BCP Oversight
September 19, 2012



1. North side of Phase II, excavated to bedrock. Inspected and certified by FLS.



2. North side of Phase II, excavated to bedrock. Inspected and certified by FLS.



Environmental Management & Consulting

**West 34th Street
New York, New York
BCP Site #C231049**

BCP Oversight
September 20, 2012



1. Hand clearing activities at Area "F" of Phase III excavation.



2. Area "F" of Phase III excavated down to bedrock.



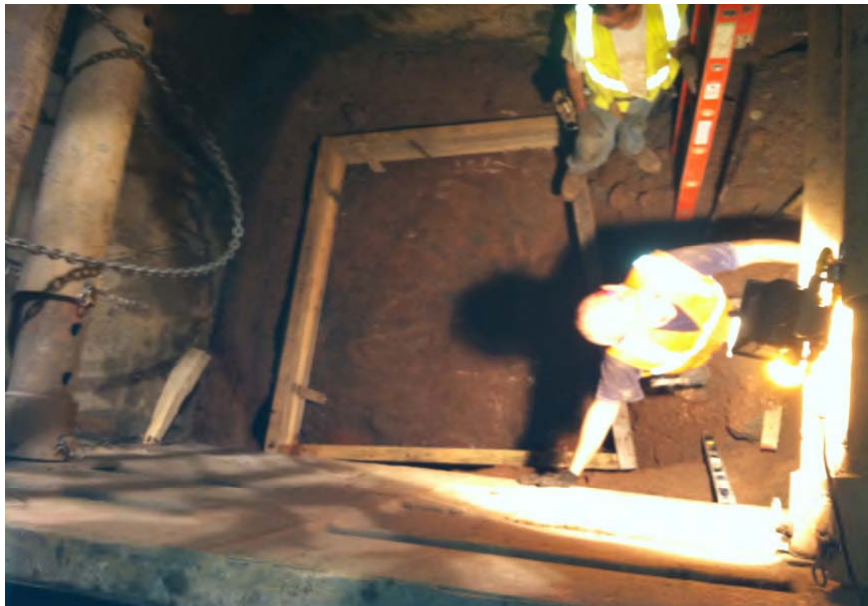
Environmental Management & Consulting

**West 34th Street
New York, New York
BCP Site #C231049**

BCP Oversight
September 21, 2012



1. Phase III, Area "D" excavated down to bedrock.



2. Phase III, Area "D" excavated down to bedrock.



Environmental Management & Consulting

**West 34th Street
New York, New York
BCP Site #C231049**

BCP Oversight
September 24, 2012



1. Area "B" excavated down to bedrock



Environmental Management & Consulting

**West 34th Street
New York, New York
BCP Site #C231049**

BCP Oversight
September 25, 2012



1. Section A of Phase 3 at clean bedrock



2. Section C of Phase 3 at clean bedrock



3. Section E of Phase 3 at clean bedrock



Environmental Management & Consulting

**West 34th Street
New York, New York
BCP Site #C231049**

BCP Oversight
September 28th, 2012



1. Phase II area excavated and cleaned to bedrock.



2. Phase II area excavated and cleaned to bedrock.



Environmental Management & Consulting

**West 34th Street
New York, New York
BCP Site #C231049**

BCP Oversight
September 13, 2012



1. Excavation conducted at Phase I.



2. South section of Phase I, pictured excavated to bedrock.



Environmental Management & Consulting

**West 34th Street
New York, New York
BCP Site #C231049**

BCP Oversight
September 14, 2012



1. West side of Phase I, excavated to bedrock.



Environmental Management & Consulting

**West 34th Street
New York, New York
BCP Site #C231049**

BCP Oversight
September 19, 2012



1. North side of Phase II, excavated to bedrock. Inspected and certified by FLS.



2. North side of Phase II, excavated to bedrock. Inspected and certified by FLS.



Environmental Management & Consulting

**West 34th Street
New York, New York
BCP Site #C231049**

BCP Oversight
September 20, 2012



1. Hand clearing activities at Area “F” of Phase III excavation.



2. Area “F” of Phase III excavated down to bedrock.



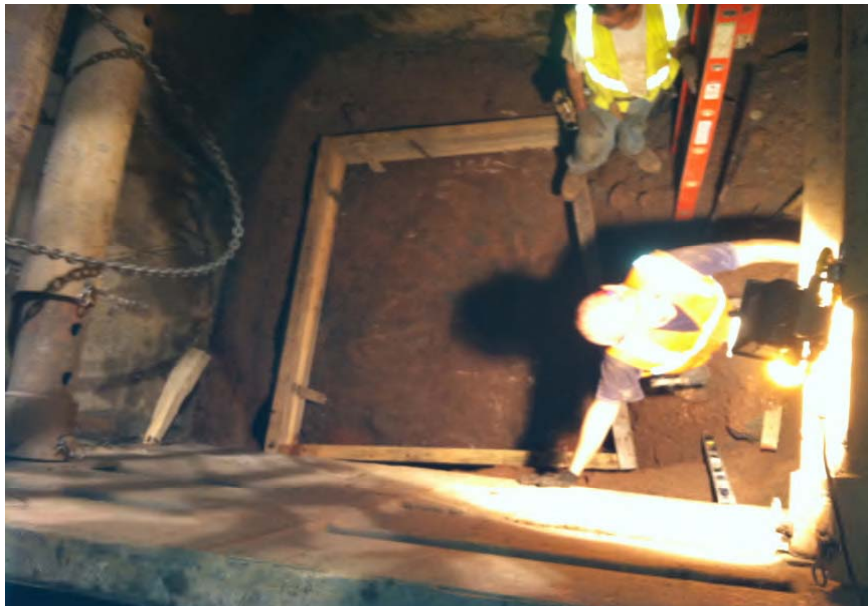
Environmental Management & Consulting

**West 34th Street
New York, New York
BCP Site #C231049**

BCP Oversight
September 21, 2012



1. Phase III, Area "D" excavated down to bedrock.



2. Phase III, Area "D" excavated down to bedrock.



Environmental Management & Consulting

**West 34th Street
New York, New York
BCP Site #C231049**

BCP Oversight
September 24, 2012



1. Area "B" excavated down to bedrock



Environmental Management & Consulting

**West 34th Street
New York, New York
BCP Site #C231049**

BCP Oversight
September 25, 2012



1. Section A of Phase 3 at clean bedrock



2. Section C of Phase 3 at clean bedrock



3. Section E of Phase 3 at clean bedrock



Environmental Management & Consulting

**West 34th Street
New York, New York
BCP Site #C231049**

BCP Oversight
September 28th, 2012



1. Phase II area excavated and cleaned to bedrock.



2. Phase II area excavated and cleaned to bedrock.



Environmental Management & Consulting

**West 34th Street
New York, New York
BCP Site #C231049**

BCP Oversight
September 5, 2012



1. Phase 4 Excavation at Bedrock.



2. Phase 4 Excavation at Bedrock.



Environmental Management & Consulting