

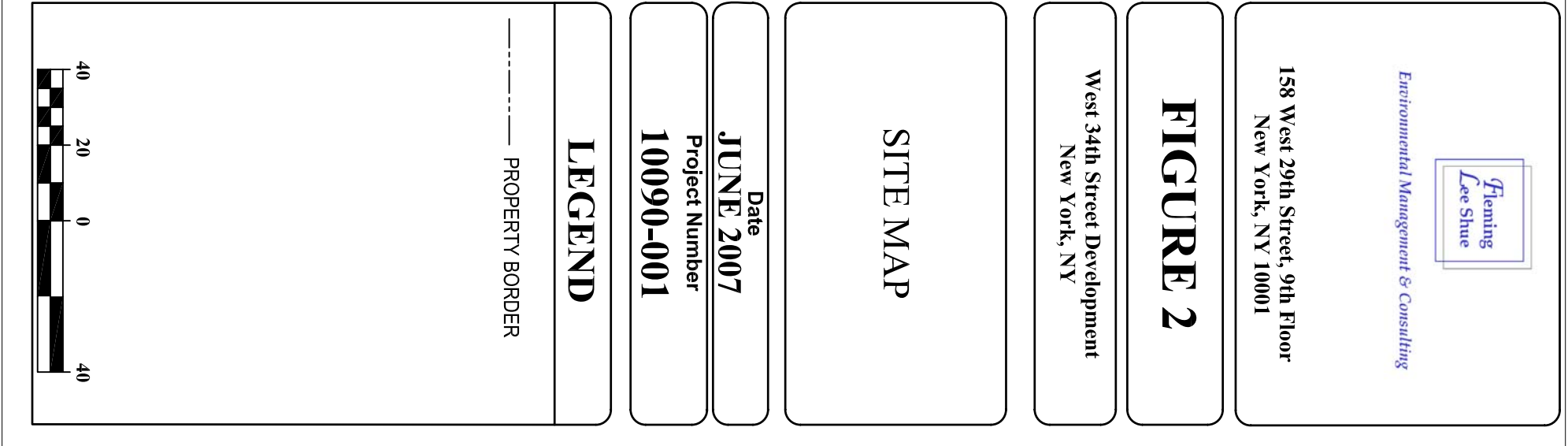
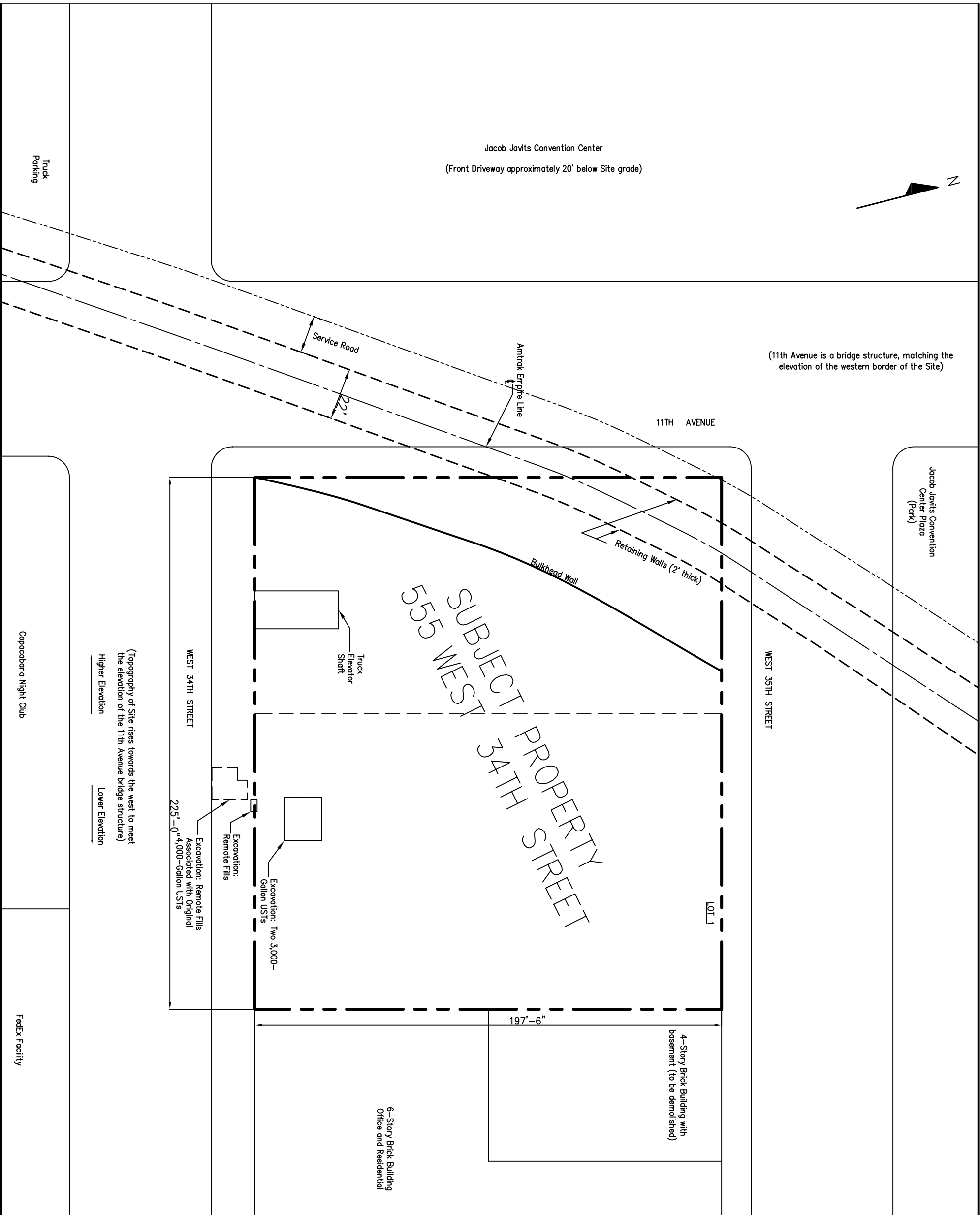
Site: Weehawken USGS Topographic Map (79287)  
 Also shown: Central Park USGS Topographic Map (84573)  
 Brooklyn USGS Topographic Map (84524)  
 Jersey City USGS Topographic Map (79210)  
 Obtained from: topozone.com ©1999-2006

## FIGURE 1: SITE LOCATION MAP

**Fleming  
Lee Shue**

SITE: W 34<sup>th</sup> Street Development  
 New York, New York  
 CLIENT: Meushar 34<sup>th</sup> Street, LLC c/o The Moinian Group

*Environmental Management & Consulting, 158 West 29<sup>th</sup> Street, 9<sup>th</sup> Fl., New York, NY 10001*





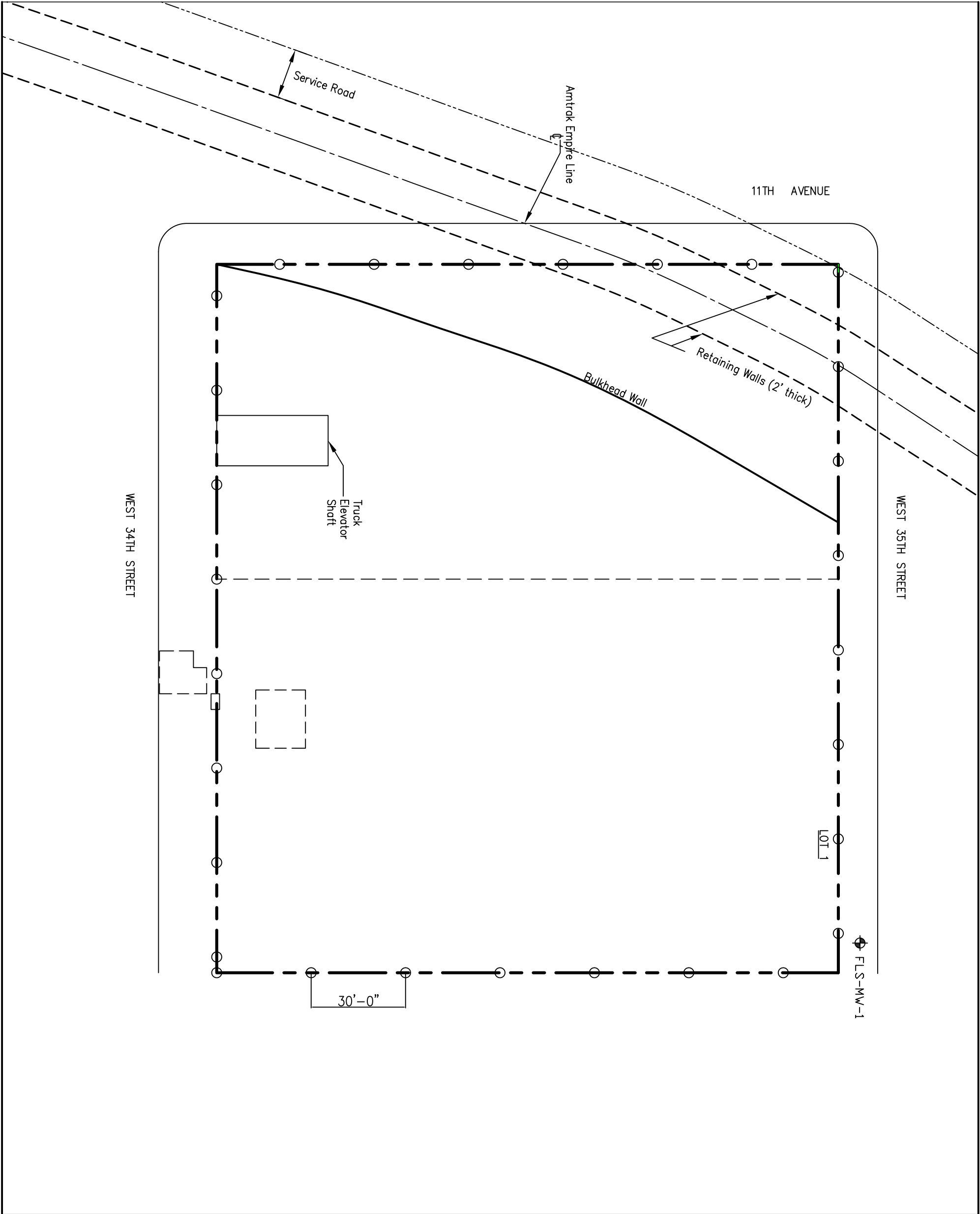
Obtained from: New York City Department of Transportation (NYCDOT) 2007 Truck Route Map

### FIGURE 3: TRUCK ROUTE MAP

SITE: West 34<sup>th</sup> Street Development  
New York, New York  
CLIENT: Meushar 34<sup>th</sup> Street, LLC c/o The Moinian Group

Fleming  
Lee Shue





Environmental Management & Consulting

158 West 29th Street, 9th Floor  
New York, NY 10001

FIGURE 4

West 34th Street Development  
New York, NY

PROPOSED SOIL AND  
GROUNDWATER  
SAMPLE LOCATIONS

Date  
JUNE 2007

Project Number  
10090-001

LEGEND

- PROPERTY BORDER
- ⊕ PROPOSED MONITORING WELL
- PROPOSED POST-EXCAVATION SOIL SAMPLE  
(Collected @ location of highest suspected contamination or above bedrock. Depth of bedrock varies, therefore depth of soil sample will be determined in field.)

