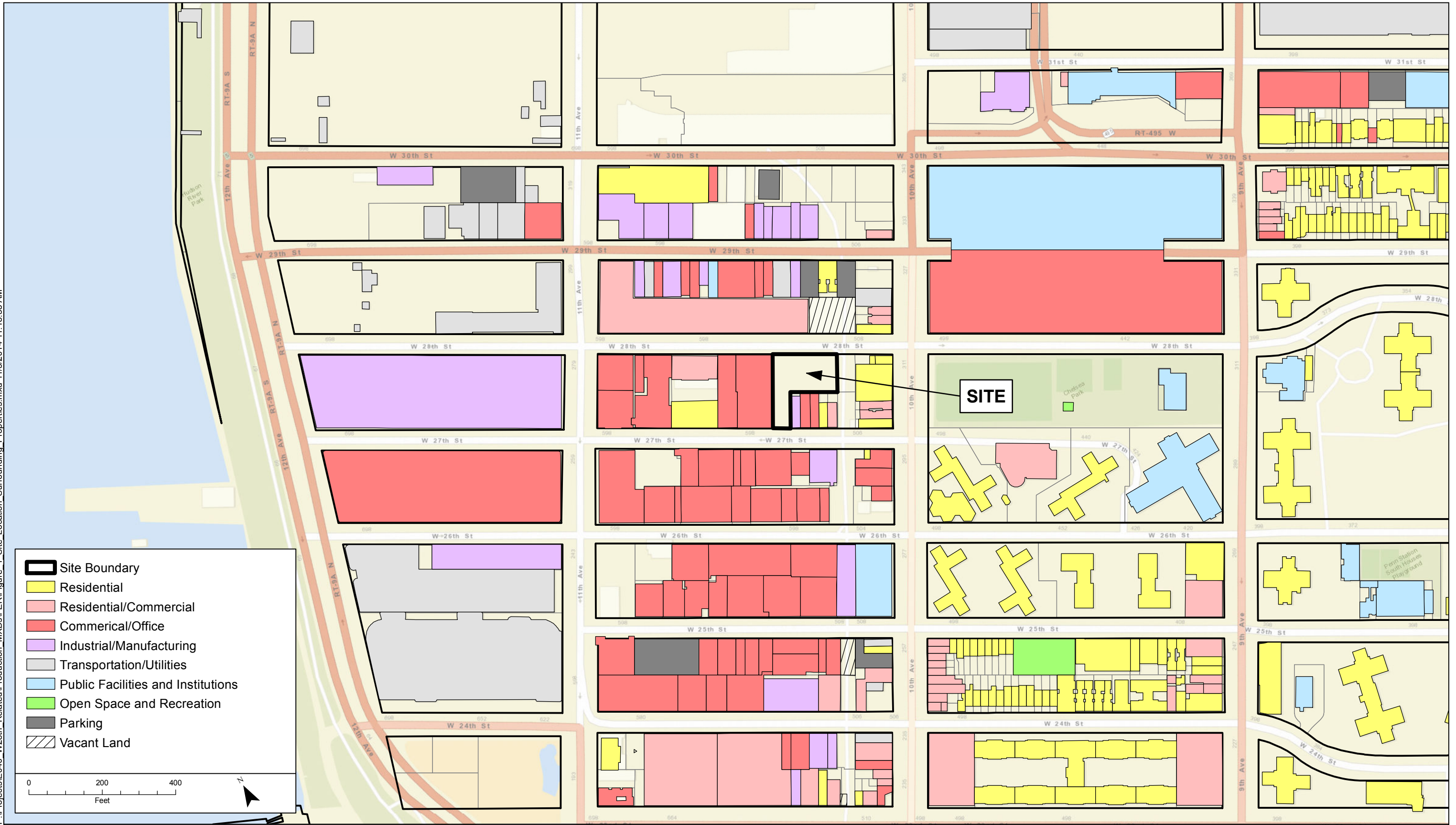


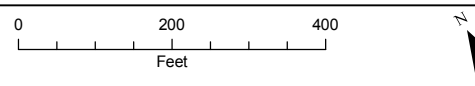
## **FIGURES**

---

P:\Projects\E040\_W28th\_Related\Production\_MXD\FER\Figure 1\_Site\_Location\_Surrounding\_Properties.mxd 11/5/2014 11:18:53 AM



- Site Boundary
- Residential
- Residential/Commercial
- Commercial/Office
- Industrial/Manufacturing
- Transportation/Utilities
- Public Facilities and Institutions
- Open Space and Recreation
- Parking
- Vacant Land



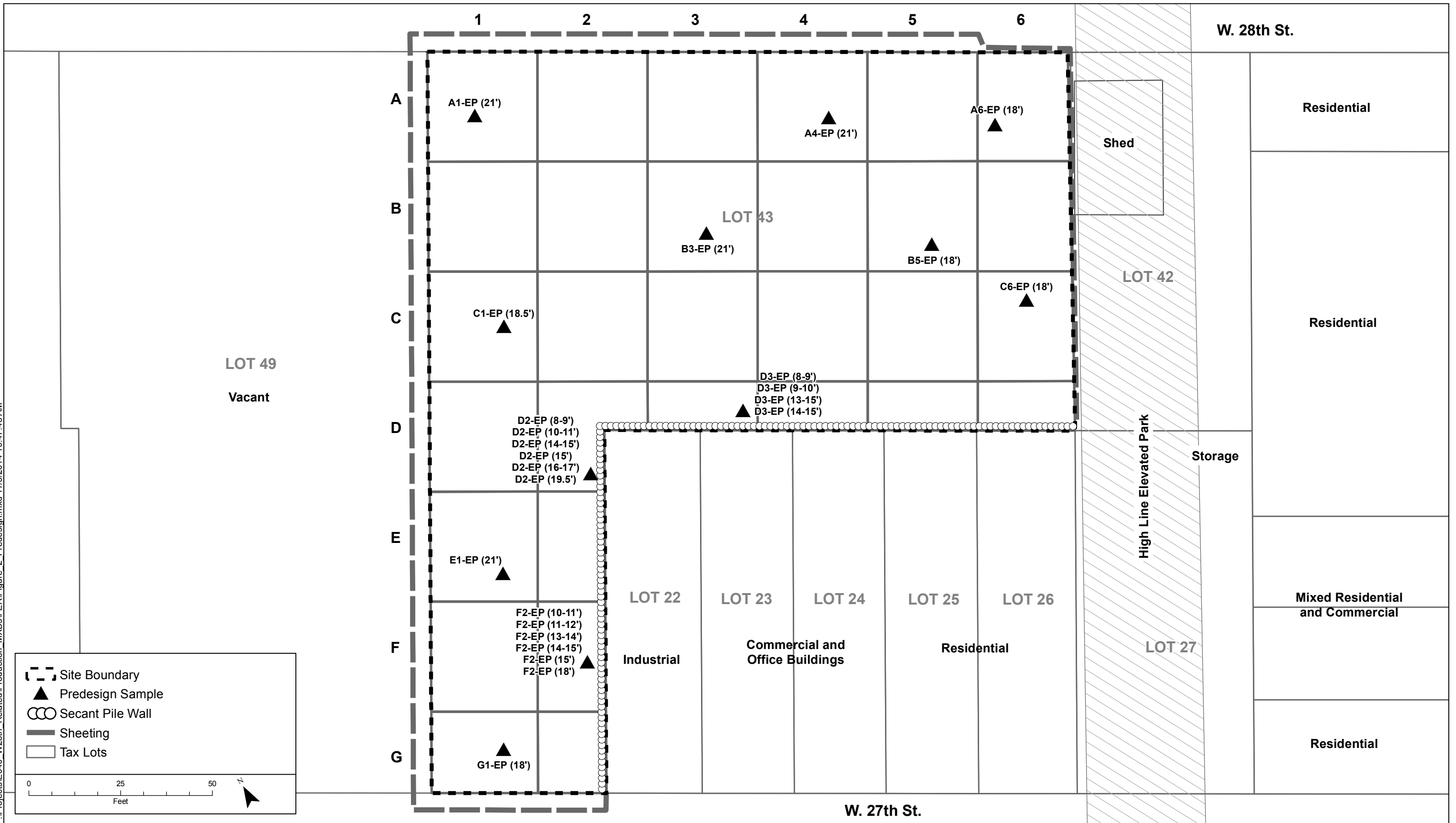
**integral**  
engineering pc.

61 Broadway, Suite 1601  
New York, New York 10006  
www.integral-corp.com

Basemap:  
ESRI World Street Map

**Figure 1.**  
Site Location and Surrounding Property Use  
520 West 28th Street, New York, NY  
Final Engineering Report

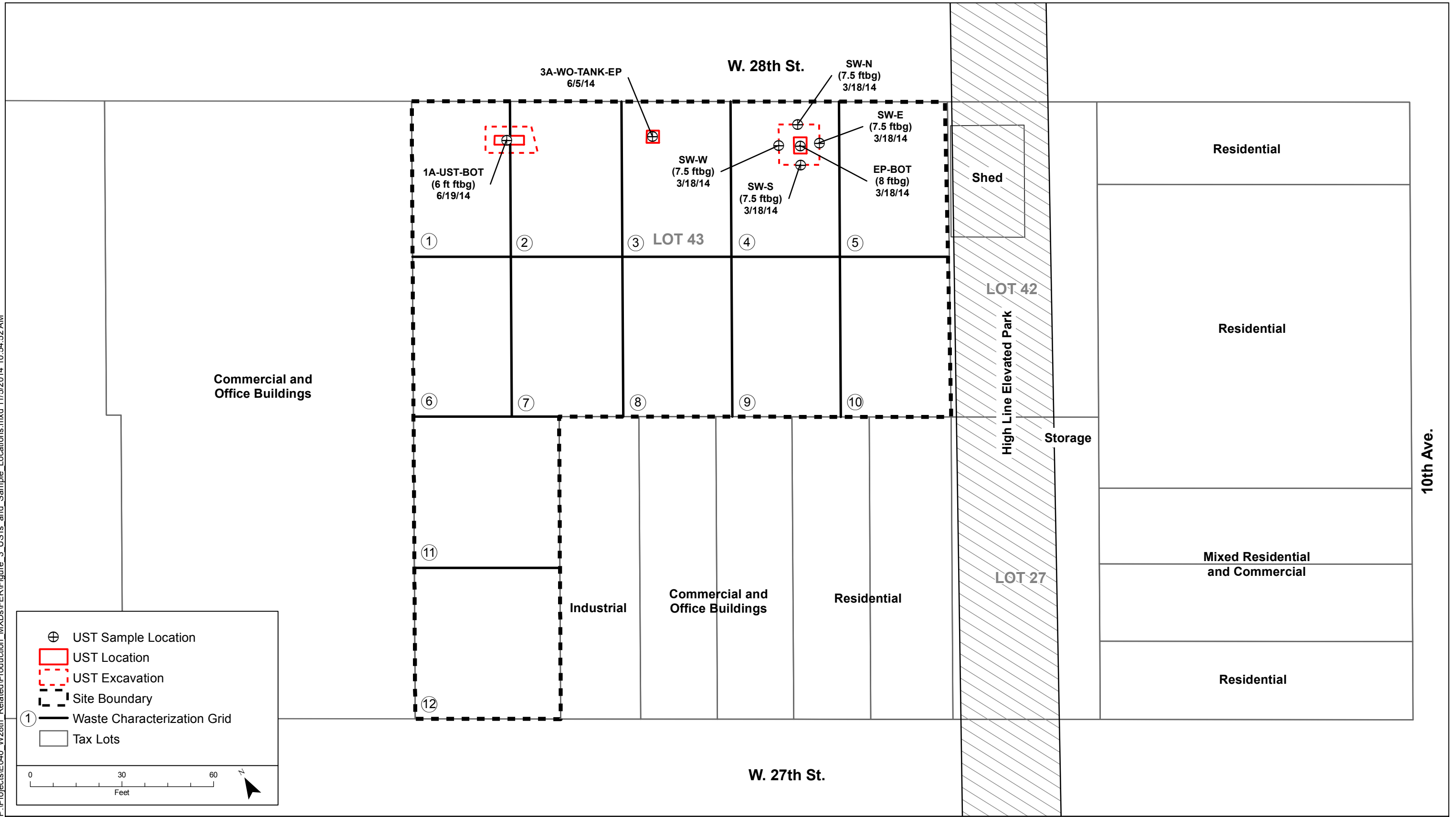
P:\Projects\1040\_W28th\_Related\Production\_MXD\FER\FER\Figure 2\_Predesign.mxd 11/5/2014 10:47:45 AM



Note: Predesign samples were taken prior to excavation activities.

**Figure 2.**  
Pre-design/Pre-excavation Soil Sampling Locations  
520 West 28th Street, New York, NY  
Final Engineering Report

P:\Projects\EO40\_W28th\_Related\Production\_MXD\FER\FER\Figure 3\_USTs and Sample Locations.mxd 11/5/2014 10:54:52 AM



⊕ UST Sample Location  
 □ UST Location  
 □ UST Excavation  
 □ Site Boundary  
 ① Waste Characterization Grid  
 □ Tax Lots

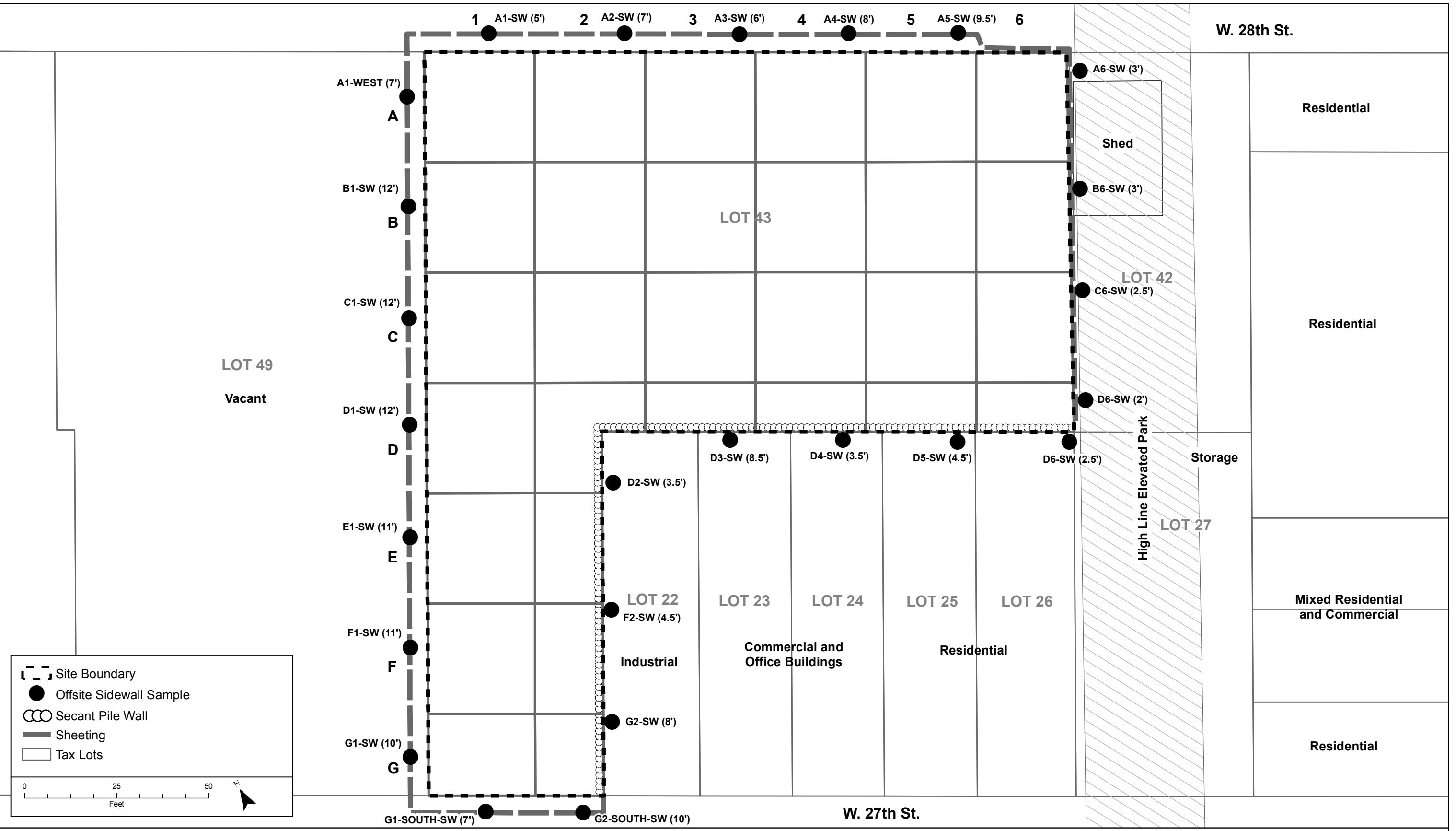
0 30 60  
Feet

North Arrow

Note:  
 1. ftbg = feet below grade  
 2. Waste characterization grids are defined in Impact's Field Sampling Summary Report dated April 9, 2014.

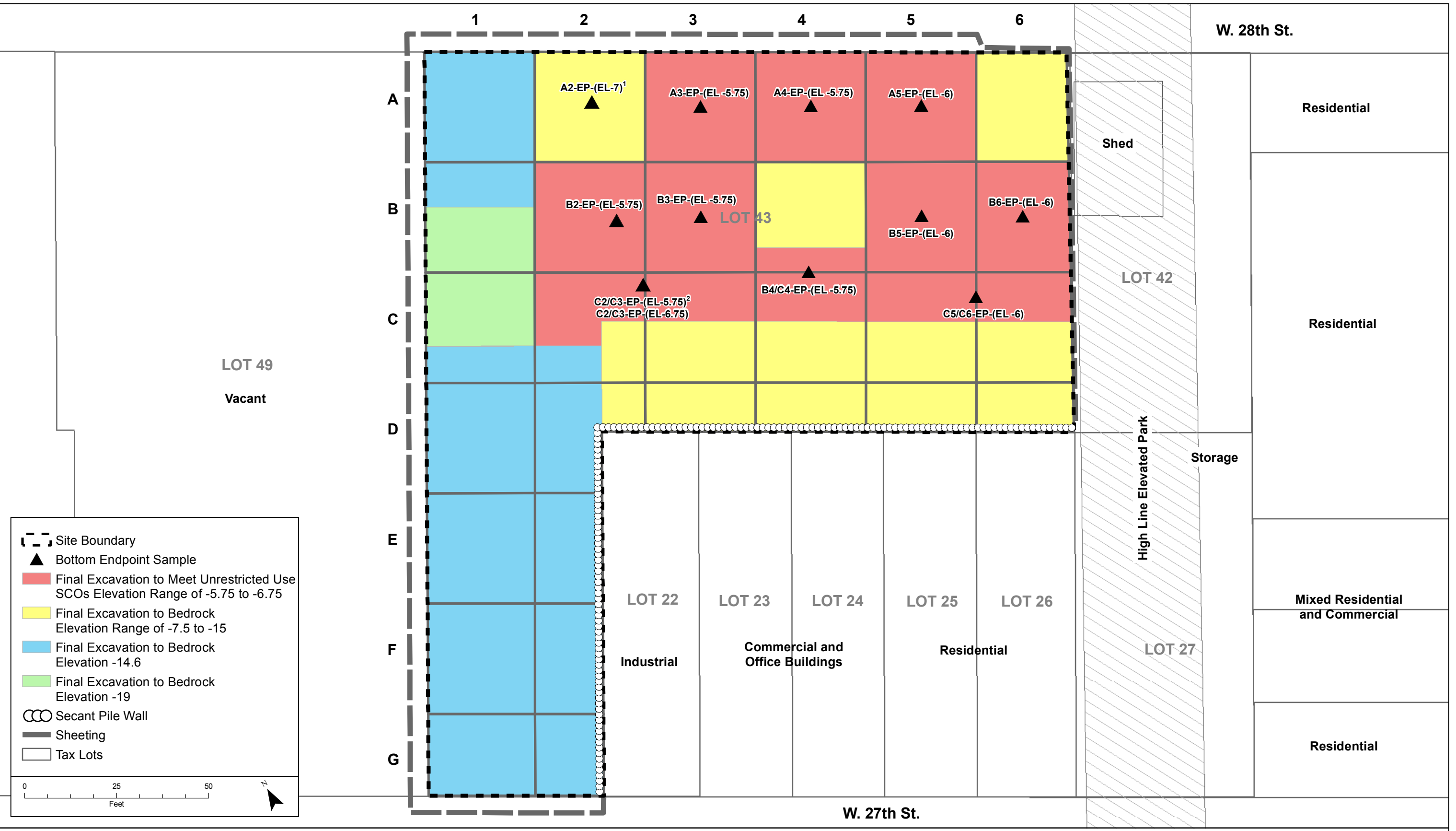
**Figure 3.**  
 Undocumented USTs and Confirmation Soil Sample Plan  
 520 West 28th Street, New York, NY  
 Final Engineering Report

P:\Projects\E040\_W28th\_Related\Production\_MXD\FER\Figure 4\_Offsite\_Sidewall\_Sample\_Locs.mxd 11/5/2014 11:05:59 AM



**Figure 4.**  
 Offsite Sidewall Sample Locations  
 520 West 28th Street, New York, NY  
 Final Engineering Report

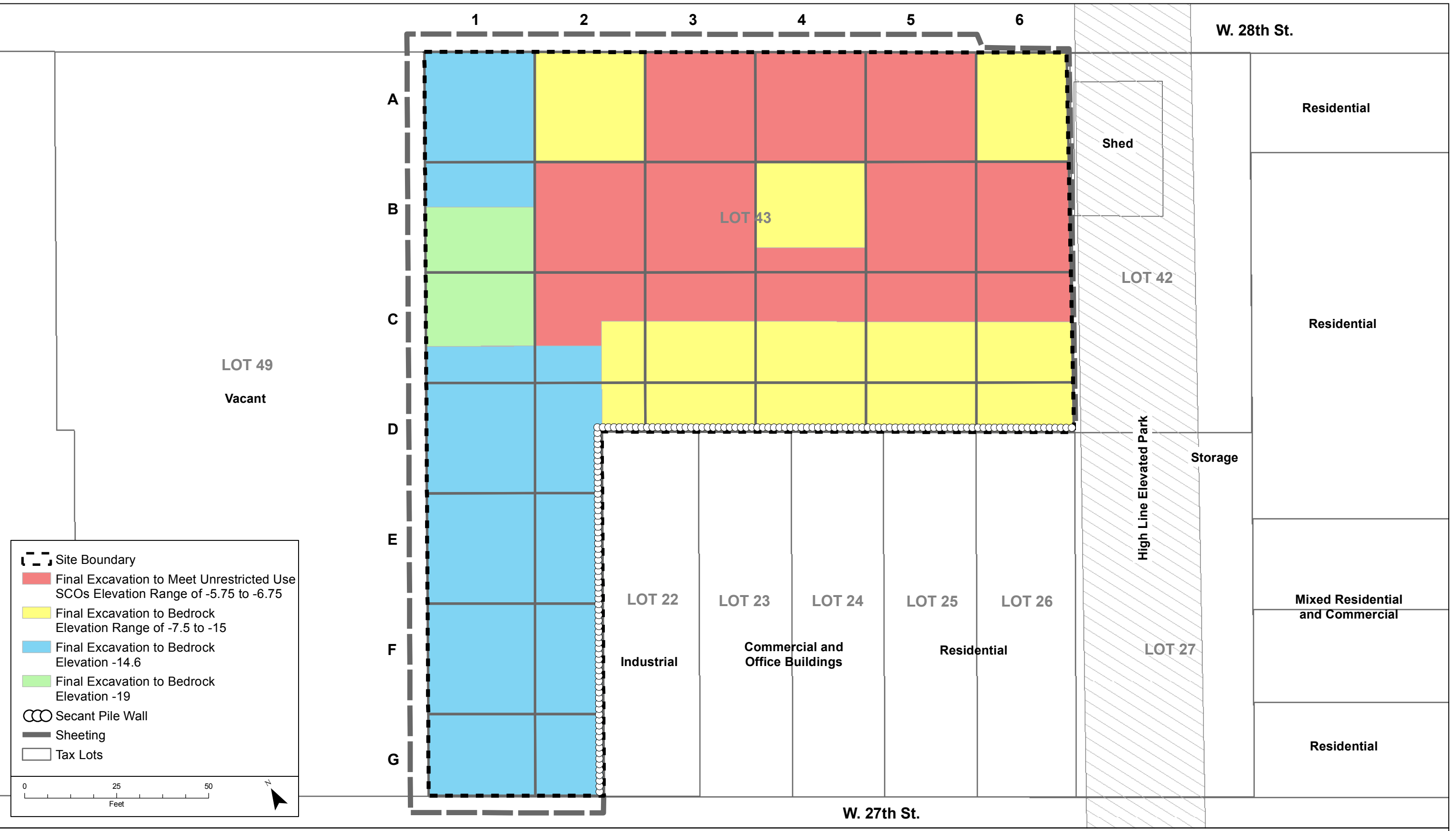
P:\Projects\040\_W28th\_Related\Production\_MXD\FER\FER\Figure 5\_Bottom\_Endpoint\_Sample\_Locs.mxd 11/5/2014 11:13:41 AM



Note:  
 1. <sup>1</sup>A2-EP-(EL-7) grid location was excavated to bedrock due to unrestricted exceedance.  
 2. <sup>2</sup>C2/C3-EP-(EL-5.75) grid location was excavated a foot deeper due to a unrestricted exceedance.  
 3. Final excavation elevations are shown (not feet below grade).  
 Elevation 0 corresponds to 11 feet below grade.

**Figure 5.**  
 Bottom Endpoint Sample Locations  
 520 West 28th Street, New York, NY  
 Final Engineering Report

P:\Projects\1040\_W28th\_Related\Production\_MXD\FER\Figure 6\_Extent of Excavation.mxd 11/6/2014 9:20:32 AM



**Legend**

- Site Boundary
- Final Excavation to Meet Unrestricted Use  
SCOs Elevation Range of -5.75 to -6.75
- Final Excavation to Bedrock  
Elevation Range of -7.5 to -15
- Final Excavation to Bedrock  
Elevation -14.6
- Final Excavation to Bedrock  
Elevation -19
- Secant Pile Wall
- Sheetting
- Tax Lots

0 25 50  
Feet

LOT 49  
Vacant

LOT 22  
Industrial

LOT 23  
Commercial and  
Office Buildings

LOT 24  
Residential

LOT 25  
Residential

LOT 26  
Residential

LOT 27

Shed

LOT 42

LOT 43

Storage

High Line Elevated Park

W. 28th St.

W. 27th St.

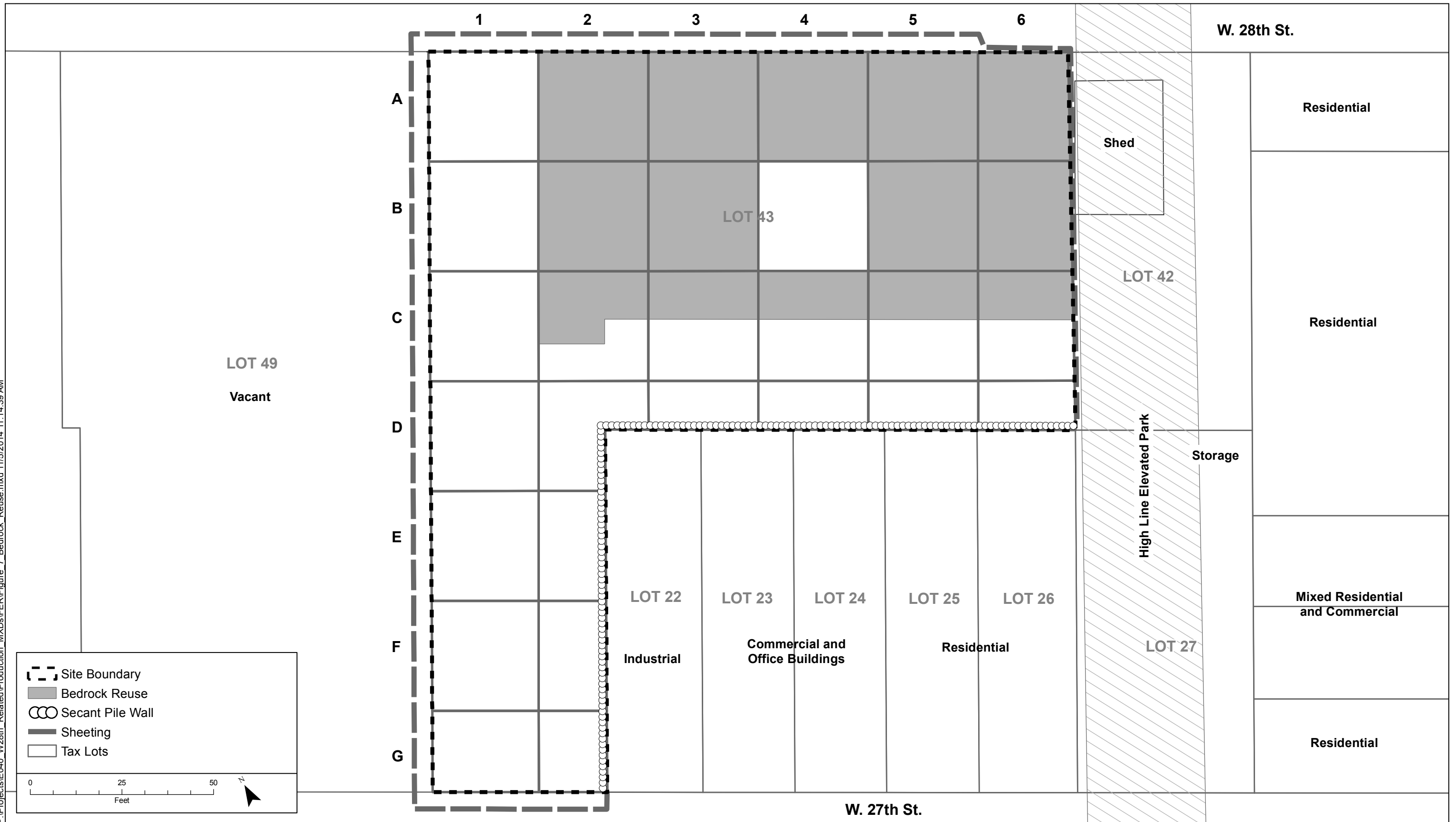
Residential

Residential

Mixed Residential  
and Commercial

Residential

P:\Projects\1040\_W28th\_Related\Production\_MXD\FER\FER\Figure 7\_Bedrock Reuse.mxd 11/5/2014 11:14:39 AM



- - - Site Boundary  
 ■ Bedrock Reuse  
 ○ Secant Pile Wall  
 — Sheeting  
 □ Tax Lots

0 25 50 Feet

↑ N

**Figure 7.**  
 Bedrock Reuse Locations  
 520 West 28th Street, New York, NY  
 Final Engineering Report