

APPENDIX K

Battered Secant Photo Log and
Engineering Sign-off



Photo 1: Battered secant pile #89P; confirming 6 degree casing tilt at EL +5 using a jig and bubble level.



Photo 2: Battered secant pile #89P; confirming 6 degree tilt at EL +0 using a jig and bubble level.



Photo 3: Battered secant pile #93P; confirming 6 degree tilt at EL +5 using a jig and bubble level.



Photo 4: Battered secant pile #93P; confirming 6 degree tilt at EL +0 using a jig and bubble level.



Photo 5: Battered secant pile #101P; confirming 6 degree tilt at EL +5 using a jig and bubble level.

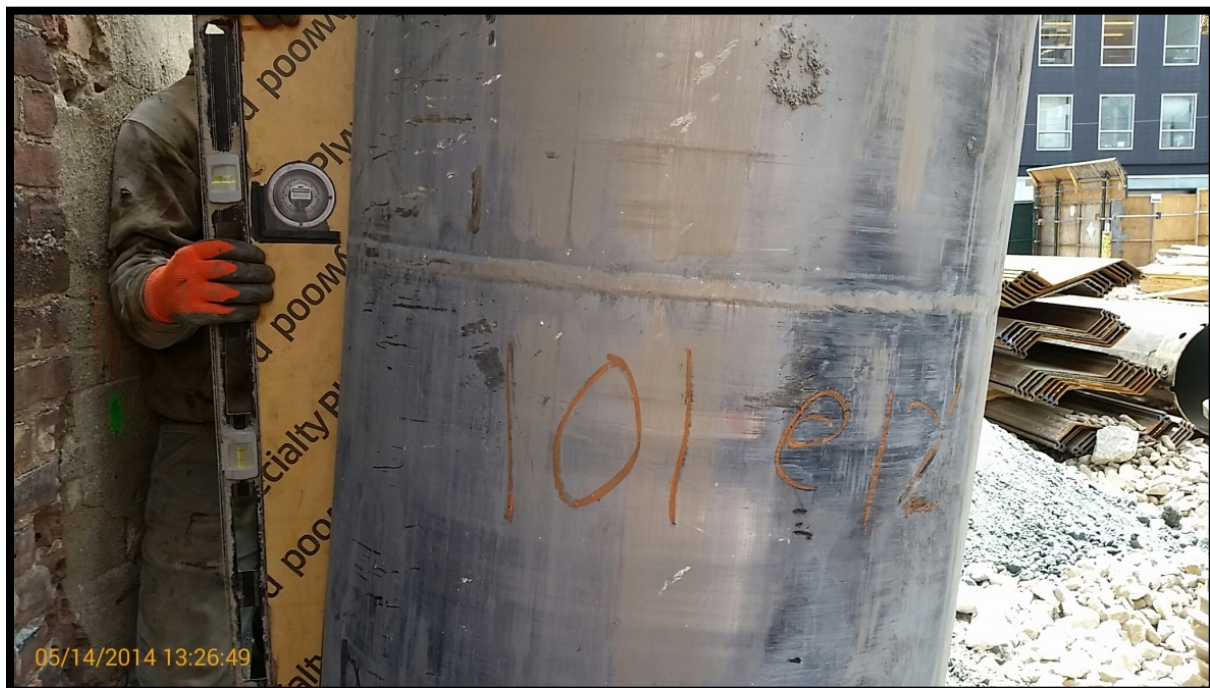


Photo 6: Battered secant pile #101P; confirming 6 degree tilt at EL +0 using a jig and bubble level.



Photo 7: Battered secant pile #105P; confirming 6 degree tilt at EL +5 using a jig and bubble level.



Photo 8: Battered secant pile #105P; confirming 6 degree tilt at EL +0 using a jig and bubble level.



Photo 9: Battered secant pile #97P: confirming 6 degree tilt at EL +5 using a jig and bubble level.

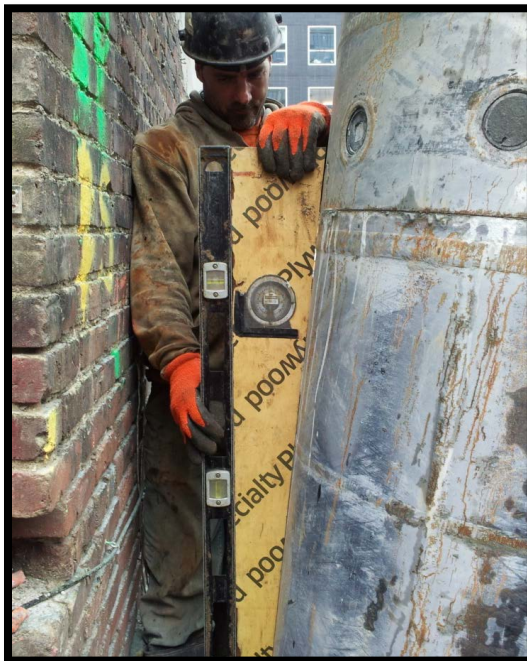


Photo 10A (left) & 10B (right): Battered secant pile #97P; confirming 6 degree tilt at EL +0 using a jig and bubble level.



Photo 11A (left) & 11B (right): Battered secant pile #109P; confirming 6 degree tilt at EL +5 using a jig and bubble level.



Photo 12: Battered secant pile #109P; confirming 6 degree tilt at EL +0 using a jig and bubble.



Photo 13: Battered secant pile #113P; confirming 6 degree tilt at EL +5 using a jig and bubble level.



Photo 14: Battered secant pile #113P; confirming 6 degree tilt at EL +0 using a jig and bubble level.



Photo 15: Battered secant pile #117P; confirming 6 degree tilt at EL +5 using a jig and bubble level.



Photo 16: Battered secant pile #117P; confirming 6 degree tilt at EL +0 using a jig and bubble level.



Photo 17: Battered secant pile #121P; confirming 6 degree tilt at EL +5 using a jig and bubble level.



Photo 18: Battered secant pile #121P; confirming 6 degree tilt at EL +0 using a jig and bubble level.



Photo 19: Battered secant pile #125P; confirming 6 degree tilt at EL +5 using a jig and bubble level.



Photo 20A (left) & 20B (right): Battered secant pile #125P; confirming 6 degree tilt at EL +0 using a jig and bubble level.



Photo 21: Battered secant pile #99P; confirming 6 degree tilt at EL +5 using a jig and bubble level.



Photo 22: Battered secant pile #99P; confirming 6 degree tilt at EL +0 using a jig and bubble level.



Photo 23: Battered secant pile #103P; confirming 6 degree tilt at EL +5 using a jig and bubble level.



Photo 24: Battered secant pile #103P; confirming 6 degree tilt at EL +0 using a jig and bubble level.



Photo 25: Battered secant pile #115P; confirming 6 degree tilt at EL +5 using a jig and bubble level.



Photo 26: Battered secant pile #115P; confirming 6 degree tilt at EL +0 using a jig and bubble level.



Photo 27: Battered secant pile #111P; confirming 6 degree tilt at EL +5 using a jig and bubble level.



Photo 28: Battered secant pile #111P; confirming 6 degree tilt at EL +0 using a jig and bubble level.



Photo 29: Battered secant pile #107P; confirming 6 degree tilt at EL +5 using a jig and bubble level.



Photo 30: Battered secant pile #107P; confirming 6 degree tilt at EL +0 using a jig and bubble level.



Photo 31: Battered secant pile #119P; confirming 6 degree tilt at EL +5 using a jig and bubble level.



Photo 32: Battered secant pile #119P; confirming 6 degree tilt at EL +0 using a jig and bubble level.



Photo 33: Battered secant pile #123; confirming 6 degree tilt at EL +5 using a jig and bubble level.



Photo 34: Battered secant pile #123P; confirming 6 degree tilt at EL +0 using a jig and bubble level.



Photo 35: Battered secant pile #127P; confirming 6 degree tilt at EL +5 using a jig and bubble level.



Photo 36: Battered secant pile #127P; confirming 6 degree tilt at EL +0 using a jig and bubble level.

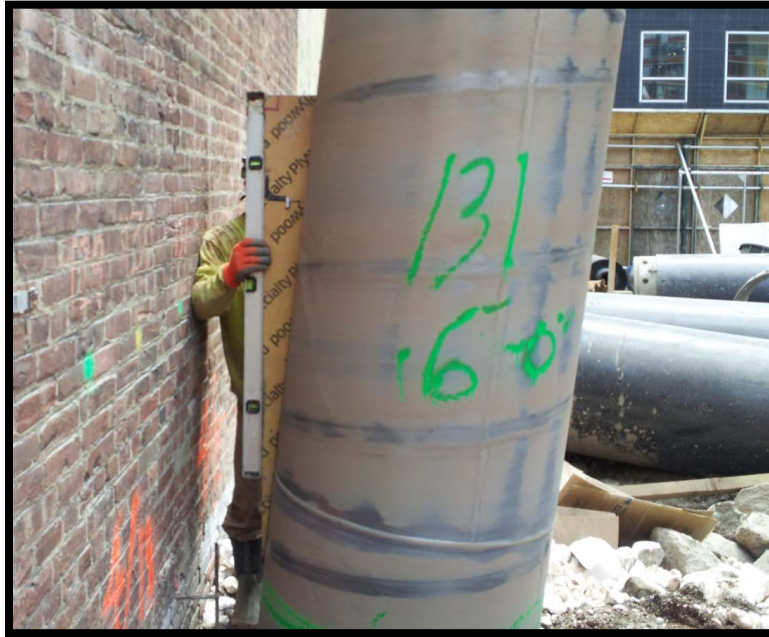


Photo 37: Battered secant piling #131P; confirming 6 degree tilt at EL +5 using a jig and bubble level.

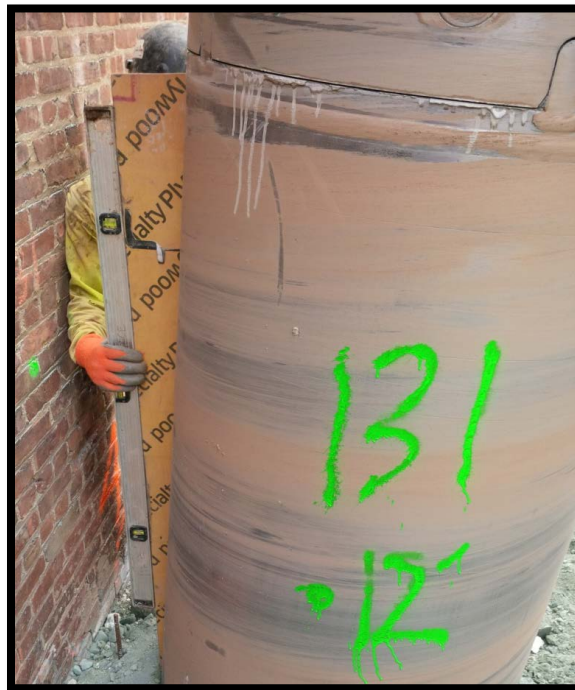


Photo 38: Battered secant pile #131P; confirming 6 degree tilt at EL +0 using a jig and bubble level.



Photo 39: Battered secant piling #135P; confirming 6 degree tilt at EL +5 using a jig and bubble level.



Photo 40: Battered secant pile #135P; confirming 6 degree tilt at EL +0 using a jig and bubble level.



Photo 41: Battered secant pile #139P; confirming 6 degree tilt at EL +5 using a jig and bubble level.



Photo 42: Battered secant pile #139P; confirming 6 degree tilt at EL +0 using a jig and bubble level.



Photo 43: Battered secant pile #143P; confirming 6 degree tilt at EL +5 using a jig and bubble level.



Photo 44: Battered secant pile #143P; confirming 6 degree tilt at EL +0 using a jig and bubble level.



Photo 45: Battered secant pile #104S; confirming 6 degree tilt at EL +5 using a jig and bubble level.



Photo 46: Battered secant pile #104S; confirming 6 degree tilt at EL +0 using a jig and bubble level.



Photo 47: Battered secant pile #108S; confirming 6 degree tilt at EL +5 using a jig and bubble level.



Photo 48: Battered secant pile #108S; confirming 6 degree tilt at EL +0 using a jig and bubble level.



Photo 49: Battered secant pile #100S; confirming 6 degree tilt at EL +5 using a jig and bubble level.



Photo 50: Battered secant pile #100S; confirming 6 degree tilt at EL +0 using a jig and bubble level.



Photo 51: Battered secant pile #112S; confirming 6 degree tilt at EL +5 using a jig and bubble level.



Photo 52: Battered secant pile #112S; confirming 6 degree tilt at EL +0 using a jig and bubble level.



Photo 53: Battered secant pile #106S; confirming 6 degree tilt at EL +5 using a jig and bubble level.



Photo 54: Battered secant pile #106S; confirming 6 degree tilt at EL +0 using a jig and bubble level.



Photo 55: Battered secant pile #116S; confirming 6 degree tilt at EL +5 using a jig and bubble level.



Photo 56: Battered secant pile #116S; confirming 6 degree tilt at EL +0 using a jig and bubble level.



Photo 57: Battered secant pile #120S; confirming 6 degree tilt at EL +5 using a jig and bubble level.



Photo 58: Battered secant pile #120S; confirming 6 degree tilt at EL +0 using a jig and bubble level.



Photo 59: Battered secant pile #110S; confirming 6 degree tilt at EL +5 using a jig and bubble level.



Photo 60: Battered secant pile #110S; confirming 6 degree tilt at EL +0 using a jig and bubble level.



Photo 61: Battered secant pile #91P; confirming 6 degree tilt at EL +5 using a jig and bubble level.



Photo 62: Battered secant pile #91P; confirming 6 degree tilt at EL +0 using a jig and bubble level.



Photo 63: Battered secant pile #95P; confirming 6 degree tilt at EL +5 using a jig and bubble level.



Photo 64: Battered secant pile #95P; confirming 6 degree tilt at EL +0 using a jig and bubble level.



Photo 65: battered secant pile #102S; confirming 6 degree tilt at 6 EL +5 using a jig and bubble level.



Photo 66: Battered secant pile #102S; confirming 6 degree tilt at EL +0 using a jig and bubble level.



Photo 67: Battered secant pile #98S; confirming 6 degree tilt at EL +5 using a jig and bubble level.



Photo 68: Battered secant pile #98S; confirming 6 degree tilt at EL +0 using a jig and bubble level.



Photo 69: Battered secant pile #90S; confirming 6 degree tilt at EL +5 using a jig and bubble level.



Photo 70: Battered secant pile #90S; confirming 6 degree tilt at EL +0 using a jig and bubble level.



Photo 71: Battered secant pile #94S; confirming 6 degree tilt at EL +5 using a jig and bubble level.



Photo 72: Battered secant pile #94S; confirming 6 degree tilt at EL +0 using a jig and bubble level.



Photo 73: Battered secant pile #92S; confirming 6 degree tilt at EL +5 using a jig and bubble level.



Photo 74: Battered secant pile #92S; confirming 6 degree tilt at EL +0 using a jig and bubble level.



Photo 75: Battered secant pile #96S; confirming 6 degree tilt at EL +5 using a jig and bubble level.



Photo 76: Battered secant pile #96S; confirming 6 degree tilt at EL +0 using a jig and bubble level.



Photo 77: Battered secant pile #114S; confirming 6 degree tilt at EL +5 using a jig and bubble level.



Photo 78: Battered secant pile #114S; confirming 6 degree tilt at EL +0 using a jig and bubble level.



Photo 79: Battered secant pile #118S; confirming 6 degree tilt at EL +5 using a jig and bubble level.



Photo 80: Battered secant pile #118S; confirming 6 degree tilt at EL +0 using a jig and bubble level.



Photo 81: Battered secant pile #122S; confirming 6 degree tilt at EL +5 using a jig and bubble level.

***NOTE:** Secant pile #122S was incorrectly labeled in the photo as #112.*



Photo 81: Battered secant pile #122S; confirming 6 degree tilt at EL +0 using a jig and bubble level.



Photo 83: Battered secant pile #126S; confirming 6 degree tilt at EL +5 using a jig and bubble level.



Photo 84: Battered secant pile #126S; confirming 6 degree tilt at EL +0 using a jig and bubble level.



Photo 85: Battered secant pile #129P; confirming 6 degree tilt at EL +5 using a jig and bubble level.



Photo 86: Battered secant pile #129P; confirming 6 degree tilt at EL +0 using a jig and bubble level.



Photo 87: Battered secant pile #133P; confirming 6 degree tilt at EL +5 using a jig and bubble level.



Photo 88: Battered secant pile #133P; confirming 6 degree tilt at EL +0 using a jig and bubble level.



Photo 89: Battered secant pile #137P; confirming 6 degree tilt at EL +5 using a jig and bubble level.



Photo 90: Battered secant pile #137P; confirming 6 degree tilt at EL +0 using a jig and bubble level.



Photo 91: Battered secant pile #124S; confirming 6 degree tilt at EL +5 using a jig and bubble level.



Photo 92: Battered secant pile #124S; confirming 6 degree tilt at EL +0 using a jig and bubble level.



Photo 93: Battered secant pile #128S; confirming 6 degree tilt at EL +5 using a jig and bubble level.



Photo 94: Battered secant pile #128S; confirming 6 degree tilt at EL +0 using a jig and bubble level.



Photo 95: Battered secant pile #145P; confirming 6 degree tilt at EL +5 using a jig and bubble level.



Photo 96: Battered secant pile #145P; confirming 6 degree tilt at EL +0 using a jig and bubble level.



Photo 97: Battered secant pile #149P; confirming 6 degree tilt at EL +5 using a jig and bubble level.



Photo 98: Battered secant pile #149P; confirming 6 degree tilt at EL +0 using a jig and bubble level.



Photo 99: Battered secant pile #153P; confirming 6 degree tilt at EL +5 using a jig and bubble level.



Photo 100: Battered secant pile #153P; confirming 6 degree tilt at EL +0 using a jig and bubble level.



Photo 101: Battered secant pile #147P; confirming 6 degree tilt at EL +5 using a jig and bubble level.



Photo 102: Battered secant pile #147P; confirming 6 degree tilt at EL +0 using a jig and bubble level.



Photo 103: Battered secant pile #141P; confirming 6 degree tilt at EL +5 using a jig and bubble level.



Photo 104: Battered secant pile #141P; confirming 6 degree tilt at EL +0 using a jig and bubble level.



Photo 105: Battered secant pile #134S; confirming 6 degree tilt at EL +5 using a jig and bubble level.



Photo 106: Battered secant pile #134S; confirming 6 degree tilt at EL +0 using a jig and bubble level.



Photo 107: Battered secant pile #151P; confirming 6 degree tilt at EL +5 using a jig and bubble level.



Photo 108: Battered secant pile #151P; confirming 6 degree tilt at EL +0 using a jig and bubble level.



Photo 109: Battered secant pile #130S; confirming 6 degree tilt at EL +5 using a jig and bubble level.



Photo 110: Battered secant pile #130S; confirming 6 degree tilt at EL +0 using a jig and bubble level.



Photo 111: Battered secant pile #138S; confirming 6 degree tilt at EL +5 using a jig and bubble level.



Photo 112: Battered secant pile #138S; confirming 6 degree tilt at EL +0 using a jig and bubble level.



Photo 113: Battered secant pile #142S; confirming 6 degree tilt at EL +5 using a jig and bubble level.



Photo 114: Battered secant pile #142S; confirming 6 degree tilt at EL +0 using a jig and bubble level.



Photo 115: Battered secant pile #132S; confirming 6 degree tilt at EL +5 using a jig and bubble level.



Photo 116: Battered secant pile #132S; confirming 6 degree tilt at EL +0 using a jig and bubble level.



Photo 117: Battered secant pile #136S; confirming 6 degree tilt at EL +5 using a jig and bubble level.



Photo 118: Battered secant pile #136S; confirming 6 degree tilt at EL +0 using a jig and bubble level.



Photo 119: Battered secant pile #144S; confirming 6 degree tilt at EL +5 using a jig and bubble level.



Photo 120: Battered secant pile #144S; confirming 6 degree tilt at EL +0 using a jig and bubble level.



Photo 121: Battered secant pile #152S; confirming 6 degree tilt at EL +5 using a jig and bubble level.



Photo 122: Battered secant pile #152S; confirming 6 degree tilt at EL +0 using a jig and bubble level.



Photo 123: Battered secant pile #148S; confirming 6 degree tilt at EL +5 using a jig and bubble level.



Photo 124: Battered secant pile #148S; confirming 6 degree tilt at EL +0 using a jig and bubble level.



Photo 125: Battered secant pile #140S; confirming 6 degree tilt at EL +5 using a jig and bubble level.



Photo 126: Battered secant pile #140S; confirming 6 degree tilt at EL +0 using a jig and bubble level.



Photo 127: Battered secant pile #146S; confirming 6 degree tilt at EL +5 using a jig and bubble level.



Photo 128: Battered secant pile #146S; confirming 6 degree tilt at EL +0 using a jig and bubble level.



Photo 129: Battered secant pile #150S; confirming 6 degree tilt at EL +5 using a jig and bubble level.



Photo 130: Battered secant pile #150S; confirming 6 degree tilt at EL +0 using a jig and bubble level.



Photo 131: Battered secant pile #154S; confirming 6 degree tilt at EL +5 using a jig and bubble level.



Photo 132A (left) & 132B (right): Battered secant pile #154S; confirming 6 degree tilt at EL +0 using a jig and bubble level.

520 W 28th st.

Related Construction LLC.

5/13/2014

Lot 22 Secant Pile Log

Job #2139021

Pile #	Type (Primary or Secondary)	Start Date	Casing Angle at 6' below grade	Casing Angle at 12' below grade	Date Concreted	Strength (PSI)	Casing Elevation Depth (Ft.)	Rock Elevation Depth (Ft.)	Socket Elevation Depth (Ft.)	Comments	MRCE Sign-off	Integral Sign-off
89	Primary	5/12/14	3.9°x4.1°	3.9°x4.1°	5/13/14	1500	-12.1	-11.3	-11.9	4' WITHIN TOLERANCE	EL: TH PE	Sm N
93	Primary	5/13/14	6°	6°	5/13/14	1500	-10.7	-8.9	-9.9		EL: TH PE	Sm N
101	Primary	5/14/14	6°	6°	5/14/14	1500	-12.2	-11.8	-12.3	13:05 CONFIRM 6' / 13:30 CONFIRM 12'	EL: TH PE	Sm N
105	Primary	5/14/14	6°	6°	5/14/14	1000	-10.1	-9.4	-10.6	9:30 CONFIRM 6' / 10:10 CONFIRM 12'	EL: TH PE	Sm N
97	Primary	5/15/14	6°	6°	5/15/14	1000	-10.1	-8.3	-11.3	11:50 CONFIRM 6' / 12:45 CONFIRM 12'	EL: TH PE	Sm N
109	Primary	5/15/14	6°	6°	5/15/14	1000	-11.1	-8.8	-12.1	8:15 CONFIRM 6' / 9:05 CONFIRM 12'	EL: TH PE	Sm N
113	Primary	5/15/14	6°	6°	5/16/14	1000	-9.3	-8.7	-10.3	15:05 CONFIRM 6' / 15:54 CONFIRM 12'	EL: TH PE	Sm N
117	Primary	5/16/14	6°	6°	5/16/14	1000	-9.0	-8.2	-9.9	6:30 CONFIRM 6' / 8:35 CONFIRM 12'	EL: TH PE	Sm N
121	Primary	5/16/14	6°	6°	5/16/14	1000	-10.2	-9.8	-10.8	12:05 CONFIRM 6' / 12:25 CONFIRM 12'	EL: TH PE	Sm N
125	Primary	5/16/14	6°	6°	5/19/14	1000	-11.3	-10.8	-11.4	14:32 CONFIRM 6' / 14:53 CONFIRM 12'	EL: TH PE	Sm N
99	Primary	5/19/14	6°	6°	5/19/14	1000	-10.8	-9.6	-11.4	13:54 CONFIRM 6' / 14:10 CONFIRM 12'	EL: TH PE	Sm N
103	Primary	5/19/14	6°	6°	5/19/14	1000	-11.1	-9.1	-11.1	08:48 CONFIRM 6' / 09:15 CONFIRM 12'	EL: TH PE	Sm N
115	Primary	5/19/14	6°	6°	5/20/14	1000	-8.8	-8.3	-9.4	8:45 CONFIRM 6' / 9:50 CONFIRM 12'	EL: TH PE	Sm N
111	Primary	5/20/14	6°	6°	5/20/14	1000	-8.9	-8.3	-9.5	8:45 CONFIRM 6' / 9:00 CONFIRM 12'	EL: TH PE	Sm N
107	Primary	5/20/14	6°	6°	5/20/14	1000	-9.3	-8.6	-10.6	12:40 CONFIRM 6' / 13:00 CONFIRM 12'	EL: TH PE	Sm N
119	Primary	5/20/14	6°	6°	5/21/14	1000	-9.3	-8.7	-10.1	13:40 CONFIRM 6' / 14:00 CONFIRM 12'	EL: TH PE	Sm N
123	Primary	5/21/14	6°	6°	5/21/14	1000	-11.3	-10.1	-11.9	8:45 CONFIRM 6' / 9:00 CONFIRM 12'	EL: TH PE	Sm N
127	Primary	5/21/14	6°	6°	5/21/14	1000	-12.3	-10.2	-13.3	13:01 CONFIRM 6' / 13:18 CONFIRM 12'	EL: TH PE	Sm N
131	Primary	5/21/14	6°	6°	5/22/14	1000	-13.5	-12	-13.9	14:37 CONFIRM 6' / 14:50 CONFIRM 12'	EL: TH PE	Sm N
135	Primary	5/22/14	6°	6°	5/22/14	1000	-13.6	-11.5	-14.7	07:27 CONFIRM 6' / 07:57 CONFIRM 12'	EL: TH PE	Sm N
139	Primary	5/22/14	6°	6°	5/22/14	1000	-14.8	-12.6	-16.5	11:40 CONFIRM 6' / 12:45 CONFIRM 12'	EL: TH PE	Sm N
143	Primary	5/22/14	6°	6°	5/23/14	1000	-15.3	-14.3	-17.5	14:26 CONFIRM 6' / 14:46 CONFIRM 12'	EL: TH PE	Sm N
104	Secondary	5/23/14	6°	6°	5/27/14	4000	-11	-9.7	-19	10:33 CONFIRM 6' / 11:27 CONFIRM 12'	EL: TH PE	Sm N
108	Secondary	5/27/14	6°	6°	5/27/14	4000	-10.5	-10.2	-17.5	13:30 CONFIRM 6' / 14:12 CONFIRM 12'	EL: TH PE	Sm N
100	Secondary	5/28/14	6°	6°	5/29/14	4000	-10.2	-9.2	-19.9	8:25 CONFIRM 6' / 9:52 CONFIRM 12'	EL: TH PE	Sm N
112	Secondary	5/28/14	6°	6°	5/29/14	4000	-10.1	-9.1	-20.8	14:14 CONFIRM 6' / 14:50 CONFIRM 12'	EL: TH PE	Sm N

89P DID NOT CLG
86 S BEAM

AC

520 W 28th st

Related Construction LLC.

5/29/2014

Lot 22 Secant Pile Sign Off

Job #2139021

Pile #	Type (Primary or Secondary)	Start Date	Casing Angle at 6' below grade	Casing Angle at 12' below grade	Date Concreted	Strength (psi)	Casing Elevation (Ft.)	Rock Elevation (Ft.)	Socket Elevation (Ft.)	Comments	MRCE Sign Off	Integral Sign off
106	S	5/29/14	6°	6°	5/30/14	4000	-10.3	-9.2	-17.0	13:30 CONFIRM 6' / 16:15 CONFIRM 12'	EL: R/L PE	
116	S	5/29/14	6°	6°	5/30/14	4000	-9.3	-8.4	-20.67	13:30 CONFIRM 6' / 11:35 CONFIRM 12'	EL: R/L PE	
120	S	5/30/14	6°	6°	6/2/14	4000	-10.2	-9.6	-17.0	13:25 CONFIRM 6' / 15:15 CONFIRM 12'	EL: R/L PE	
110	S	6/2/14	6°	6°	6/2/14	4000	-10.5	-9.2	-19.0	10:45 CONFIRM 6' / 11:55 CONFIRM 12'	EL: R/L PE	
91	P	6/3/14	6°	6°	6/3/14	1000	-10.8	-10.8	-11.6	11:25 CONFIRM 6' / 11:42 CONFIRM 12'	EL: R/L PE	
95	P	6/3/14	6°	6°	6/5/14	1000	-9.3	-9.0	-10.5	8:41 CONFIRM 6' / 8:53 CONFIRM 12'	EL: R/L PE	
102	S	6/3/14	6°	6°	6/4/14	4000	-11.3	-9.5	-17.8	11:45 CONFIRM 6' / 16:05 CONFIRM 12'	EL: R/L PE	
98	S	6/4/14	6°	6°	6/4/14	4000	-10.3	-8.8	-17.6	8:25 CONFIRM 6' / 8:50 CONFIRM 12'	EL: R/L PE	
90	S	6/4/14	6°	6°	6/5/14	4000	-11.3	-9.4	-20.8	8:24 CONFIRM 6' / 8:55 CONFIRM 12'	EL: R/L PE	
94	S	6/3/14	6°	6°	6/5/14	4000	-9.6	-8.6	-21.1	11:10 CONFIRM 6' / 16:30 CONFIRM 12'	EL: R/L PE	
92	S	6/6/14	6°	6°	6/6/14	4000	-11.4	-9.4	-21.7	11:05 CONFIRM 6' / 11:20 CONFIRM 12'	EL: R/L PE	
96	S	6/6/14	6°	6°	6/6/14	4000	-9.4	-8.5	-22.1	8:15 CONFIRM 6' / 1:50 CONFIRM 12'	EL: R/L PE	
114	S	6/9/14	6°	6°	6/9/14	4000	-11.5	-9.0	-22.0	2:40 CONFIRM 6' / 3:06 CONFIRM 12'	EL: R/L PE	
118	S	6/9/14	6°	6°	6/9/14	4000	-10.0	-8.4	-19.7	9:55 CONFIRM 6' / 10:35 CONFIRM 12'	EL: R/L PE	
122	S	6/10/14	6°	6°	6/10/14	4000	-11.8	-10.3	-18.2	8:30 CONFIRM 6' / 9:50 CONFIRM 12'	EL: R/L PE	
126	S	6/10/14	6°	6°	6/10/14	4000	-10.5	-10.0	-21.3	10:50 CONFIRM 6' / 11:30 CONFIRM 12'	EL: R/L PE	
129	P	6/11/14	6°	6°	6/11/14	1000	-13.6	-12.5	-13.5	8:35 CONFIRM 6' / 14:50 CONFIRM 12'	EL: R/L PE	
133	P	6/11/14	6°	6°	6/11/14	1000	-14.7	-14.1	-14.7	11:35 CONFIRM 6' / 11:50 CONFIRM 12'	EL: R/L PE	
137	P	6/18/14	6°	6°	6/18/14	1000	-14.8	-13.4	-14.9	8:45 CONFIRM 6' / 9:55 CONFIRM 12'	EL: R/L PE	
124	S	6/12/14	6°	6°	6/12/14	4000	-11.5	-11.0	-22	08:24 CONFIRM 6' / 08:50 CONFIRM 12'	EL: R/L PE	
128	S	6/12/14	6°	6°	6/12/14	4000	-13.9	-11.6	-21.6	11:13 CONFIRM 6' / 12:26 CONFIRM 12'	EL: R/L PE	
155	P	6/13/14	PLUMB (-2°)	PLUMB (2°)	6/13/14	1000	-13.8	-12.5	-13.7	08:57 PROPOSED UNB	EL: R/L PE	
145	P	6/17/14	6°	6°	6/17/14	1000	-16.3	-15.4	-16.6	11:12 CONFIRM 6' / 11:40 CONFIRM 12'	EL: R/L PE	
149	P	6/17/14	6°	6°	6/17/14	1000	-14.5	-13.7	-14.8	9:00 CONFIRM 6' / 9:14 CONFIRM 12'	EL: R/L PE	
153	P	6/17/14	6°	6°	6/18/14	1000	-13	-12.2	-13	14:45 CONFIRM 6' / 15:50 CONFIRM 12'	EL: R/L PE	
147	P	6/18/14	6°	6°	6/19/14	1000	-15.3	-14.8	-15.9	14:21 CONFIRM 6' / 14:52 CONFIRM 12'	EL: R/L PE	
141	P	6/18/14	6°	6°	6/18/14	1000	-15.3	-14.2	-15.3	10:13 CONFIRM 6' / 10:54 CONFIRM 12'	EL: R/L PE	
134	S	6/19/14	6°	6°	6/19/14	4000	-15.3	-14.1	-17.7	7:25 CONFIRM 6' / 8:20 CONFIRM 12'	EL: R/L PE	
151	P	6/19/14	6°	6°	6/19/14	1000	-13.0	-12.1	-13.2	9:35 CONFIRM 6' / 10:18 CONFIRM 12'	EL: R/L PE	
130	S	6/19/14	6°	6°	6/20/14	4000	-14.6	-12.6	-18	15:29 CONFIRM 6' / 15:50 CONFIRM 12'	EL: R/L PE	
138	S	6/20/14	6°	6°	6/20/14	4000	-15.8	-13.6	-22	8:58 CONFIRM 6' / 9:05 CONFIRM 12'	EL: R/L PE	
142	S	6/23/14	6°	6°	6/23/14	4000	-16.3	-16.0	-18.5	15:45 CONFIRM 6' / 16:04 CONFIRM 12'	EL: R/L PE	
132	S	6/23/14	6°	6°	6/23/14	4000	-17.1	-16.6	-17.9	8:40 CONFIRM 6' / 9:10 CONFIRM 12'	EL: R/L PE	
136	S	6/23/14	6°	6°	6/25/14	4000	-15.3	-14.8	-17.0	15:00 CONFIRM 6' / 15:20 CONFIRM 12'	EL: R/L PE	
144	S	6/24/14	6°	6°	6/25/14	4000	-15.3	-14.4	-17.8	9:30 CONFIRM 6' / 15:05 CONFIRM 12'	EL: R/L PE	
152	S	6/25/14	6°	6°	6/25/14	4000	-12.8	-12.6	-21.4	10:30 CONFIRM 6' / 11:05 CONFIRM 12'	EL: R/L PE	
148	S	6/25/14	6°	6°	6/25/14	4000	-16.1	-15.4	-17.8	12:45 CONFIRM 6' / 13:10 CONFIRM 12'	EL: R/L PE	

Related Construction LLC.
Lot 22 Secant Pile Sign Off

5/29/2014
Job #2139021

[illegible]