

250 Water Street and the New York State Department of Environmental Conservation Brownfield Cleanup Program

BCP Working Group Meeting

250 Water Street, New York, New York
NYSDEC BCP Site No. C231127

April 5, 2022

Remedial Design Investigation Update

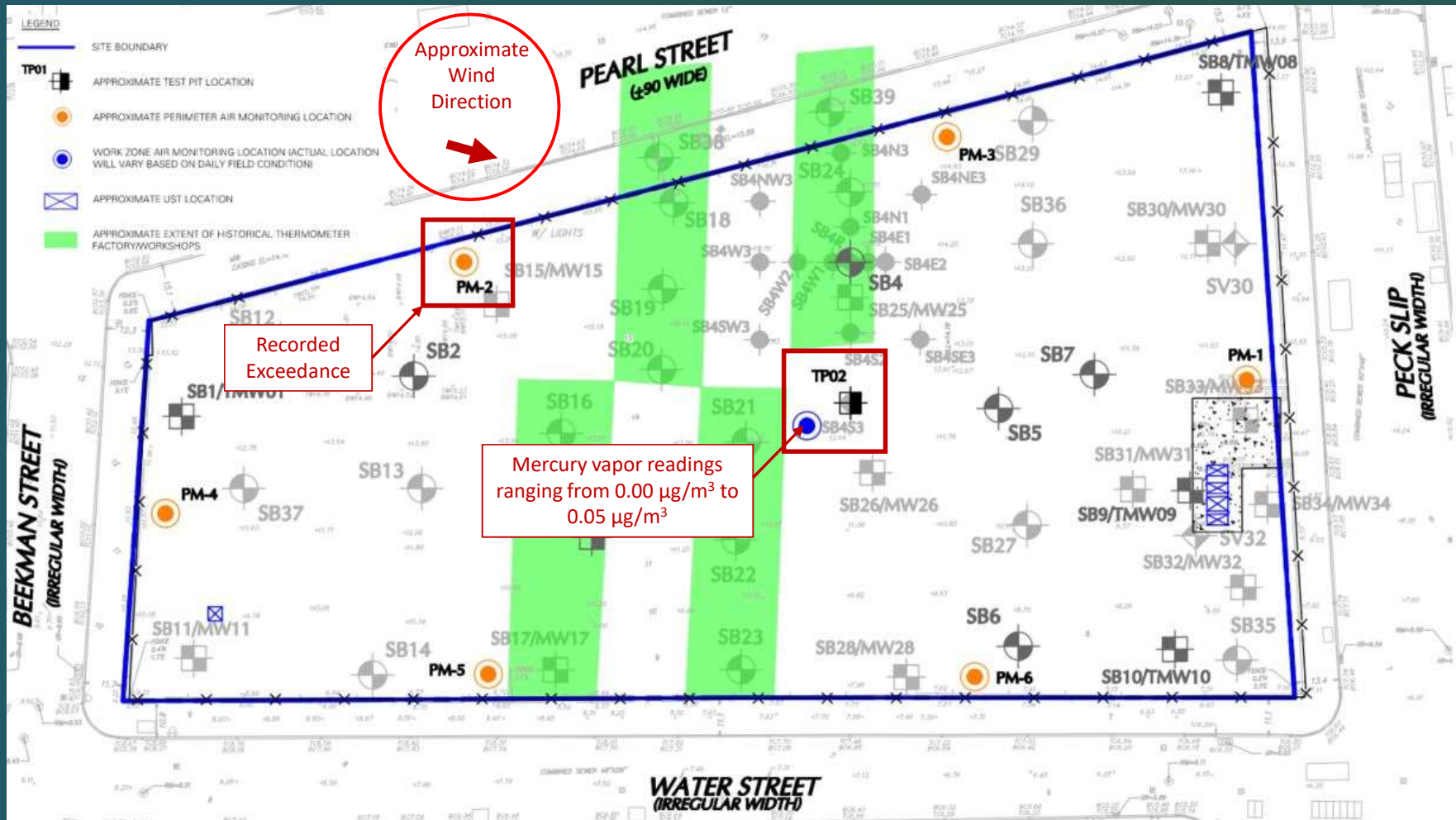
Remedial Design Investigation:

- Test pit investigation and waste characterization - COMPLETE
 - Favorable air monitoring data from the test pit investigation
 - Changes to the CAMP made during RDIWP Review will be incorporated into RAWP

Test Pit ID	Jerome® J505 Mercury Vapor Monitoring Results (Handheld Unit)		Jerome® J405 Mercury Vapor Monitoring Results (Work Zone)		CAMP Action Level
	Maximum Instantaneous Concentration	Average Concentration (over 1 hour)	Maximum Instantaneous Concentration	Average Concentration (over 1 hour)	
TP01	0.09 µg/m ³	0.02 µg/m ³	0.0 µg/m ³	0.0 µg/m ³	<u>Perimeter Stations</u> 1 µg/m ³
TP02	0.36 µg/m ³	0.03 µg/m ³	0.0 µg/m ³	0.0 µg/m ³	
TP03	0.06 µg/m ³	0.01 µg/m ³	0.0 µg/m ³	0.0 µg/m ³	
TP04	0.05 µg/m ³	0.00 µg/m ³	0.0 µg/m ³	0.0 µg/m ³	<u>Work Zone Station</u> 10 µg/m ³
TP05	0.13 µg/m ³	0.02 µg/m ³	0.0 µg/m ³	0.0 µg/m ³	

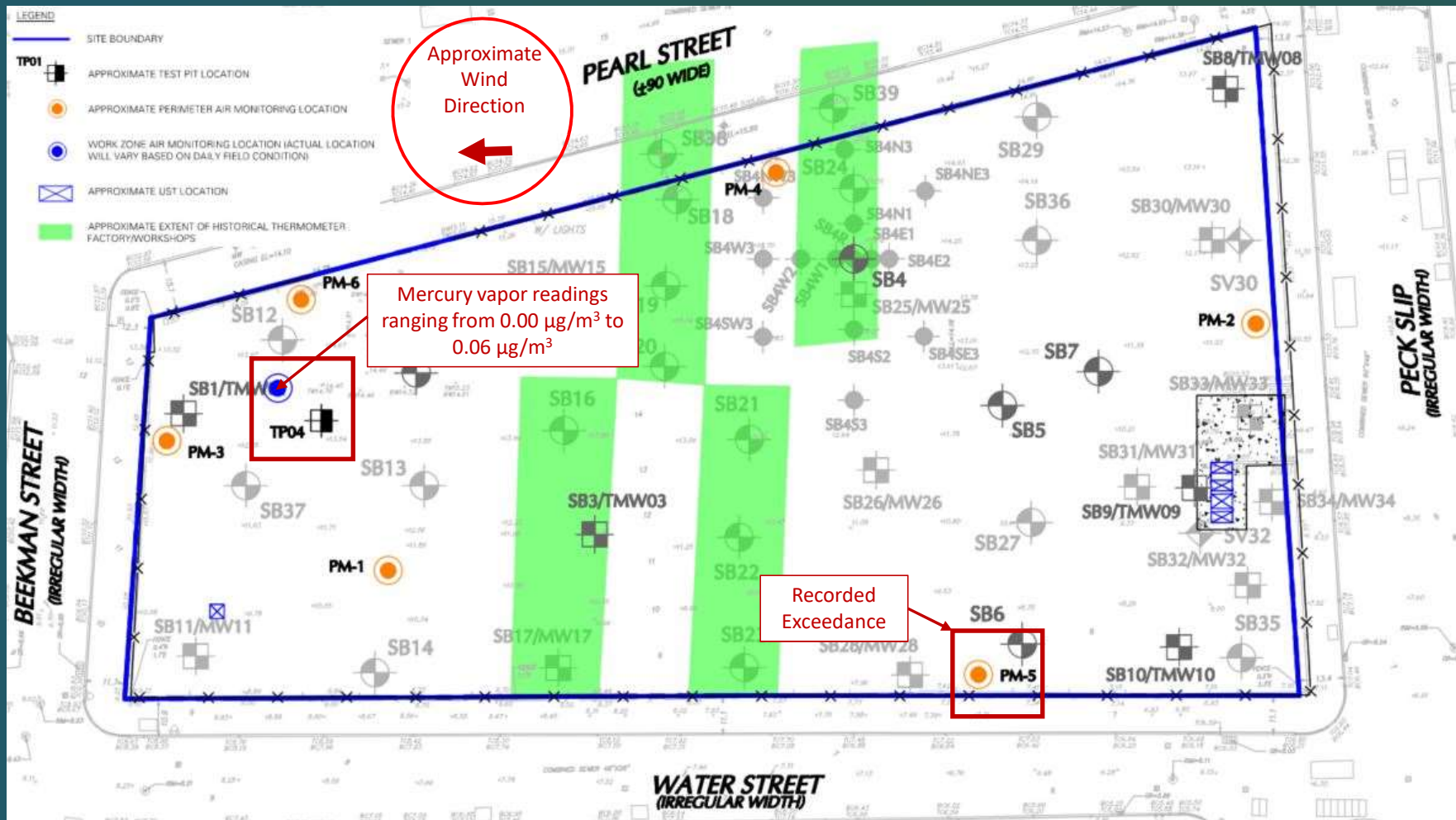
Remedial Design Investigation Update

Erroneous CAMP Exceedance on February 12, 2022



Remedial Design Investigation Update

Erroneous CAMP Exceedance on February 13, 2022

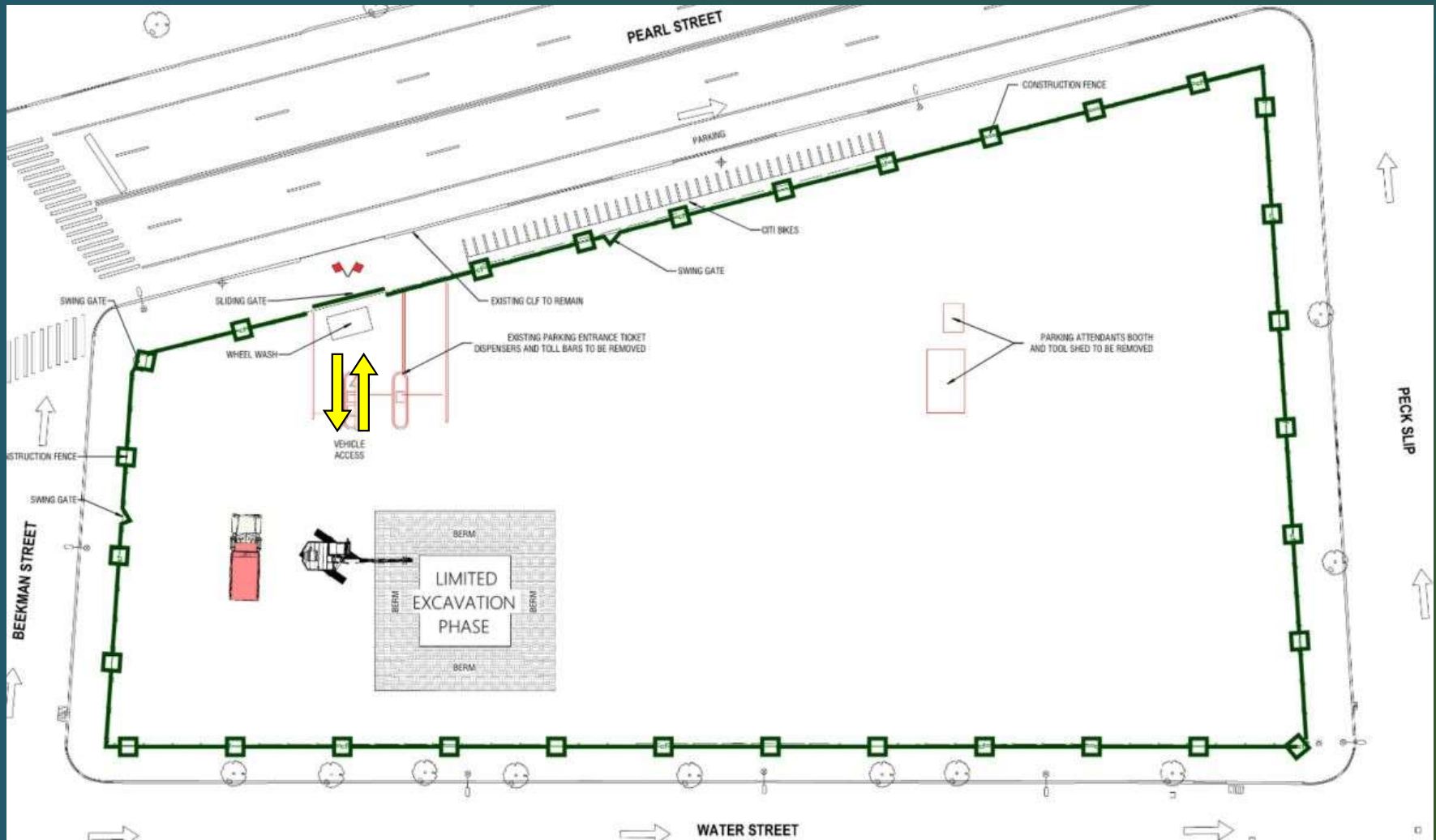


Remedial Design Investigation Update

Preliminary Waste Characterization Results:

- 51 sample sets collected (one grab/one composite)
- Maximum mercury concentration: 7.94 mg/kg
- One TCLP lead concentration above hazardous waste limit; delineation sampling will be performed prior to off-site disposal.
- PCB delineation identified area of PCB impacts; concentrations below EPA Toxic Substances Control Act (TSCA) limit

Early Foundation/Remediation Work



Early Foundation/Remediation Work

- **(± 15 days)** Pre-construction survey of neighboring buildings identified in EIS, construction of perimeter fencing around the site, selective removal of existing parking lot structures
- **(± 9 days)** Installation of four steel piles to about 85 feet below grade surface
- **(± 3 days)** Installation of steel sheeting for support-of-excavation during pile cap construction
- **(± 3 days)** Excavation and off-site disposal of fill/soil to about 8 feet below grade surface (bgs) and deeper localized excavation from 8 to 18.5 feet bgs for pile cap installation
- **(± 6 days)** Installation of a pile cap
- **(± 2 days)** Backfill of the excavation area to above the water table using imported backfill
- **(As Required)** Excavation dewatering and treatment for pile cap construction
- **(Ongoing)** 24-hour on-site security

Q & A