

## SITE OBSERVATION REPORT

<b>PROJECT No.:</b> 170381202  <b>PROJECT:</b> 250 Water Street  <b>LOCATION:</b> New York, NY  <b>BCP SITE ID:</b> C231127	<b>CLIENT:</b> 250 Seaport District, LLC	<b>DATE:</b> Monday, April 25, 2022  <b>WEATHER:</b> Clear, 49.8 – 58.4 °F Wind: SSW @ 0.8 – 6.9 mph  <b>TIME:</b> 6:00 AM – 4:00 PM  <b>MONITOR:</b> Lauren Roper, Maye Yassin	
<b>EQUIPMENT:</b> MiniRAE 3000 PID DustTrak II Jerome J405® Jerome J505® Hand tools	<b>PRESENT AT SITE:</b> <span style="float: right;"><b>Day 4</b></span> <b>Langan</b> (Environmental) – Lauren Roper, Maye Yassin <b>UBS</b> (Fence installation Contractor)		
<b>OBSERVATIONS, DISCUSSIONS, TEST RESULTS, ETC.:</b>  Langan was present to document remediation and construction activities in accordance with the New York State Department of Environmental Conservation (NYSDEC)-approved November 2021 Remedial Action Work Plan (RAWP) at the 250 Water Street site (NYSDEC Brownfield Cleanup Program [BCP] Site No. C231127).  <b>Site Activities</b> <ul style="list-style-type: none"> <li>UBS continued installing perimeter construction fencing along the northern, western, and southern boundaries of the site (along Pearl Street, Beekman Street, and Water Street, respectively). Perimeter construction fencing consisted of about 8-foot-high plywood panels, which were secured to the ground surface using about 4-inch-long bolts.</li> </ul> <b>Material Tracking</b> <ul style="list-style-type: none"> <li>No material was imported to the site.</li> <li>No material was exported from the site.</li> </ul> <b>Sampling</b> <ul style="list-style-type: none"> <li>No samples were collected.</li> </ul>			
Cc:	M. Raygorodetsky, P. McMahon, M. Au	By:	Lauren Roper  <b>LANGAN</b>

## SITE OBSERVATION REPORT

### CAMP Activities

Langan performed air monitoring at the perimeter of the site at six locations for particulate matter less than 10 microns in diameter (PM10), volatile organic compounds (VOCs), and mercury vapor, during ground-intrusive activities. Fifteen-minute average concentrations of PM10, VOCs, and mercury vapor did not exceed the action levels established in the site community air monitoring plan (CAMP) for the duration of work activities.

#### Daily Average Concentrations

Station ID	Particulate (mg/m <sup>3</sup> )	Organic Vapor (ppm)	Mercury Vapor (µg/m <sup>3</sup> )
PM-1	0.012	0.0	0.0
PM-2	0.008	0.0	0.0
PM-3	0.009	0.0	0.0
PM-4	0.010	0.0	0.0
PM-5	0.005	0.9	0.0
PM-6	0.007	0.0	0.0

#### Maximum 15-Minute-Average Concentrations

Station ID	Particulate (mg/m <sup>3</sup> )	Organic Vapor (ppm)	Mercury Vapor (µg/m <sup>3</sup> )
PM-1	0.015	0.0	0.1
PM-2	0.018	0.0	0.2
PM-3	0.030	0.1	0.0
PM-4	0.017	0.0	0.2
PM-5	0.010	1.3	0.1
PM-6	0.015	0.0	0.1

•mg/m<sup>3</sup> = milligrams per cubic meter •ppm = parts per million •µg/m<sup>3</sup> = micrograms per cubic meter

- Langan used a handheld Jerome® J505 mercury analyzer to monitor ambient air conditions throughout the site. Instantaneous mercury vapor concentrations ranged from 0.00 µg/m<sup>3</sup> to 0.10 µg/m<sup>3</sup>.
- Perimeter air monitoring station PM-5 was relocated to the western sidewalk of Beekman Street from 8:03am to 10:10am during installation of the perimeter construction fence along Beekman Street.
- Perimeter air monitoring station PM-3 was relocated to the southern sidewalk of Water Street from 10:10am to 2:50pm during installation of the perimeter construction fence along Water Street.
- Perimeter air monitoring station PM-6 was relocated to the northern sidewalk of Pearl Street from 1:35pm to 2:50pm during installation of the perimeter construction fence along Pearl Street.
- Prior to discontinuing the CAMP at the conclusion of ground-intrusive activities, VOC and mercury vapor concentrations were confirmed to return to background conditions at each perimeter station. CAMP stations were discontinued sequentially between 2:50pm and 3:03pm at the conclusion of ground-intrusive activities.

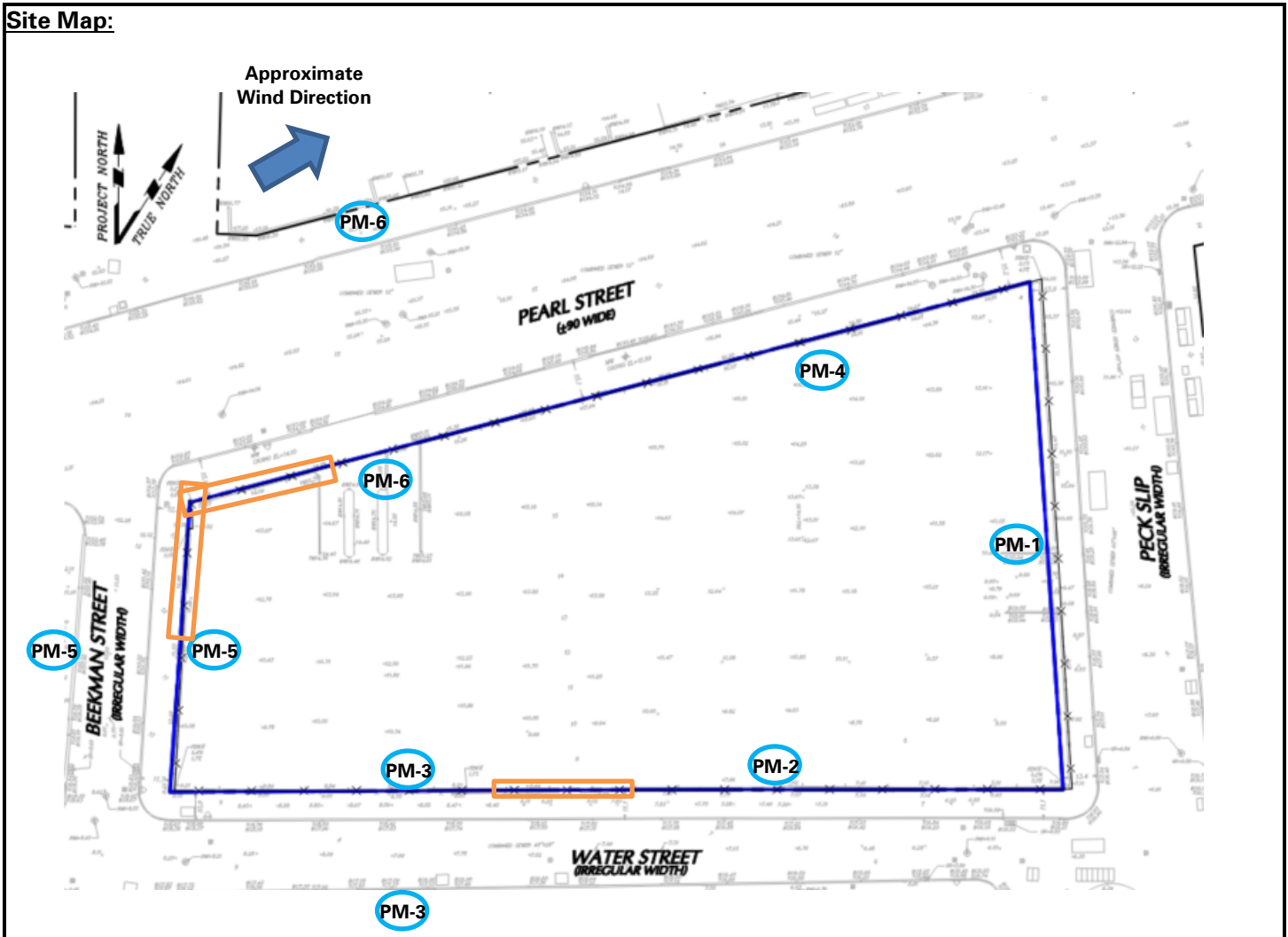
### Anticipated Activities

- UBS will continue installing construction fence at the southern perimeter of the site.

Cc:	M. Raygorodetsky, P. McMahon, M. Au	By:	Lauren Roper
			<b>LANGAN</b>


## SITE OBSERVATION REPORT

### Site Map:



### Legend:

**PM-1** Approximate location of air monitoring station

 Approximate Work Area

### Notes:

- 1) Air monitoring stations were relocated based on work area and wind direction. Locations shown above identify the predominant area of the air monitoring station.

Cc:	M. Raygorodetsky, P. McMahon, M. Au	By:	Lauren Roper
			<b>LANGAN</b>

## SITE OBSERVATION REPORT

### Select Site Photographs:



Photo 1: View of perimeter construction fencing installed along the northern boundary of the site (facing southeast).



Photo 2: View of perimeter CAMP station PM-3, relocated to the southern sidewalk of Water Street (facing south)

Cc:	M. Raygorodetsky, P. McMahon, M. Au	By:	Lauren Roper
			<b>LANGAN</b>