

## SITE OBSERVATION REPORT

<p><b>PROJECT No.:</b> 170381202</p> <p><b>PROJECT:</b> 250 Water Street</p> <p><b>LOCATION:</b> New York, NY</p> <p><b>BCP SITE ID:</b> C231127</p>	<p><b>CLIENT:</b> 250 Seaport District, LLC c/o The Howard Hughes Corporation</p>	<p><b>DATE:</b> Monday, June 19, 2023</p> <p><b>WEATHER:</b> Partly Sunny, 65 – 80 °F Wind: NE @ 0.25 – 2.24 mph</p> <p><b>TIME:</b> 6:00 am – 2:30 pm</p> <p><b>MONITOR</b> Jack Millman</p>
<p><b>EQUIPMENT:</b> CAT 335 Excavator Jerome J505 Mercury Vapor Analyzer RKI GX-6000 Photoionization Detector (PID) Aeroqual ASQ1 Air Monitoring Station</p>	<p><b>PRESENT AT SITE:</b> <span style="float: right;"><b>Day 144</b></span>  <b>Langan</b> (Environmental) Jack Millman, Roswell Lo, Paul McMahon  <b>Suffolk Construction (Suffolk)</b> (General Contractor) Anthony Galu  <b>New York State Department of Environmental Conservation (NYSDEC)</b> Rafi Alam  <b>New York City Department of Buildings (NYCDOB)</b></p>	
<p><b>OBSERVATIONS, DISCUSSIONS, TEST RESULTS, ETC.:</b></p> <p>Langan was present to document remediation activities in accordance with the NYSDEC-approved November 2021 Remedial Action Work Plan (RAWP) at the 250 Water Street site (NYSDEC Brownfield Cleanup Program [BCP] Site No C231127).</p> <p><b>Site Activities</b></p> <ul style="list-style-type: none"> <li>Suffolk began mobilizing equipment to the site in preparation for the next phase of remediation. An on-site meeting was attended by Suffolk, Langan and the NYSDEC to discuss project expectations during implementation of the RAWP.</li> <li>Ground-intrusive activities were not conducted throughout the workday; however, Langan implemented the community air monitoring plan (CAMP) to troubleshoot equipment and collect background air quality data prior to the commencement of remedial activities.</li> <li>NYCDOB was on-site to conduct a routine inspection of general site conditions. No adverse conditions were identified, and no further action was required as a result of the site visit.</li> </ul>		
<p>Cc:</p>	<p>M. Raygorodetsky, P. McMahon, M. Au</p>	<p>By: Jack Millman <b>LANGAN</b></p>

## SITE OBSERVATION REPORT

### Material Tracking

- No material was exported from the site.
- No material was imported to the site.

#### Material Import Summary

Facility Name Location Type of Material	Stone Industries, Inc. Haledon, NJ 1.5/2.5-inch Virgin Stone		Stone Industries, Inc. Haledon, NJ 0.75-inch Virgin Stone		Impact Reuse & Recovery Center or Impact Materials Jersey City, Lyndhurst/Jersey City, NJ 1.5-inch Clean Bluestone		Impact Reuse & Recovery Center, Lyndhurst, NJ General Fill	
Quantities	No. of Loads	Approx. Volume (Tons)	No. of Loads	Approx. Volume (Tons)	No. of Loads	Approx. Volume (Tons)	No. of Loads	Approx. Volume (Tons)
Today	0	0	0	0	0	0	0	0
Project Total	8	184.42	0	0	15	339.65	336	8,216.79
NYSDEC Approved:	1,800 tons*			720 tons*		19,500 tons*		

\*0.75-inch, 1.5-inch, and 2.5-inch virgin stone from the Stone Industries, Inc. facility and 1.5-inch clean bluestone from the Impact Reuse & Recovery Center (IRRC) facility were approved for import of 1,000 cubic yards (CY) and 400 CY, respectively. Assuming a conversion factor of 1.8, each quantity was converted to tons in order to accurately compare with import weight tickets. General fill from the IRRC facility was approved for import of 13,000 CY and a conversion factor of 1.5 is applied.

#### Material Export Summary (1 of 2)

Facility Name Location Type of Material	Allocco Recycling Brooklyn, NY Construction & Demolition (C&D) Debris		IRRC Lyndhurst, NJ Construction & Demolition (C&D) Debris		Clean Earth of North Jersey Kearny, NJ Hazardous Lead-Impacted Soil/Fill		Clean Earth of North Jersey Kearny, NJ Non-hazardous Soil/Fill	
Quantities	No. of Loads	Approx. Volume (CY)	No. of Loads	Approx. Volume (CY)	No. of Loads	Approx. Volume (CY)	No. of Loads	Approx. Volume (CY)
Today	0	0	0	0	0	0	0	0
Project Total	5	85	42	840	95	1,900	216	4,320

#### Material Export Summary (2 of 2)

Facility Name Location Type of Material	Middlesex County Landfill East Brunswick, NJ Non-hazardous Soil/Fill		Bayshore Soil Management Keasbey, NJ Petroleum-Impacted Soil/Fill		Clean Earth of Carteret, NJ Carteret, NJ Non-hazardous Soil/Fill	
Quantities	No. of Loads	Approx. Volume (CY)	No. of Loads	Approx. Volume (CY)	No. of Loads	Approx. Volume (CY)
Today	0	0	0	0	0	0
Project Total	261	5,220	267	5,340	66	1,320

Cc:	M. Raygorodetsky, P. McMahon, M. Au, J. Frey	By:	Jack Millman <b>LANGAN</b>
-----	--	-----	-------------------------------

## SITE OBSERVATION REPORT

### Sampling

- No samples were collected.

### CAMP Activities

Langan performed air monitoring at the perimeter of the site at four locations for mercury vapor, volatile organic compounds (VOCs), and particulate matter less than 10 microns in diameter (PM10). There were no fifteen-minute average concentrations for mercury vapor, VOCs, or PM10 that approached or exceeded the action levels established by the CAMP (1.00  $\mu\text{g}/\text{m}^3$ , 5.0 parts per million [ppm], and 0.100  $\text{mg}/\text{m}^3$  respectively).

#### Background Concentrations

Prior to implementation of ground-intrusive work, instantaneous background concentrations of mercury vapor and VOCs were recorded using a handheld Jerome<sup>®</sup> J505 mercury vapor analyzer and a handheld PID, respectively.

- Background concentrations of mercury vapor at each CAMP station ranged from 0.00 to 0.02  $\mu\text{g}/\text{m}^3$ .
- Background concentrations of VOCs at each CAMP station were recorded at 0.0 ppm.

#### Perimeter and Work Zone Concentrations

##### Daily Average Concentrations

Station ID	Particulate ( $\text{mg}/\text{m}^3$ )	Organic Vapor (ppm)	Mercury Vapor ( $\mu\text{g}/\text{m}^3$ )
PM-1	0.004	0.0	0.00
PM-2	0.004	0.0	0.00
PM-3	0.004	0.0	0.00
PM-4	0.004	0.0	0.00
WZ-1	-	-	-
WZ-2	-	-	-
WZ-3	-	-	-
WZ-4	-	-	-

##### Maximum 15-Minute-Average Concentrations

Station ID	Particulate ( $\text{mg}/\text{m}^3$ )	Organic Vapor (ppm)	Mercury Vapor ( $\mu\text{g}/\text{m}^3$ )
PM-1	0.008	0.0	0.01
PM-2	0.008	0.0	0.02
PM-3	0.006	0.0	0.02
PM-4	0.007	0.0	0.03
WZ-1	-	-	-
WZ-2	-	-	-
WZ-3	-	-	-
WZ-4	-	-	-

●  $\text{mg}/\text{m}^3$  = milligrams per cubic meter    ● ppm = parts per million    ●  $\mu\text{g}/\text{m}^3$  = micrograms per cubic meter

Cc:	M. Raygorodetsky, P. McMahon, M. Au, J. Frey	By:	Jack Millman
			<b>LANGAN</b>

## SITE OBSERVATION REPORT

### Ambient Air (Handheld Jerome® J505 and Handheld PID)

- The dedicated mobile monitor (Langan) used a handheld Jerome® J505 mercury vapor analyzer to monitor ambient air conditions at various heights throughout the site. Instantaneous mercury vapor concentrations throughout the site ranged from 0.00  $\mu\text{g}/\text{m}^3$  to 0.08  $\mu\text{g}/\text{m}^3$ .
- The dedicated mobile monitor (Langan) used a handheld PID to monitor VOC concentrations throughout the site. Instantaneous VOC concentrations were not detected above background concentrations throughout the workday.

### Prior to CAMP Shutdown

Prior to discontinuing CAMP, mercury vapor and VOC concentrations were confirmed to return to background conditions at each perimeter station using the handheld Jerome® J505 mercury vapor analyzer and handheld PID, respectively. CAMP stations were discontinued sequentially between 1:54 pm and 2:06 pm.

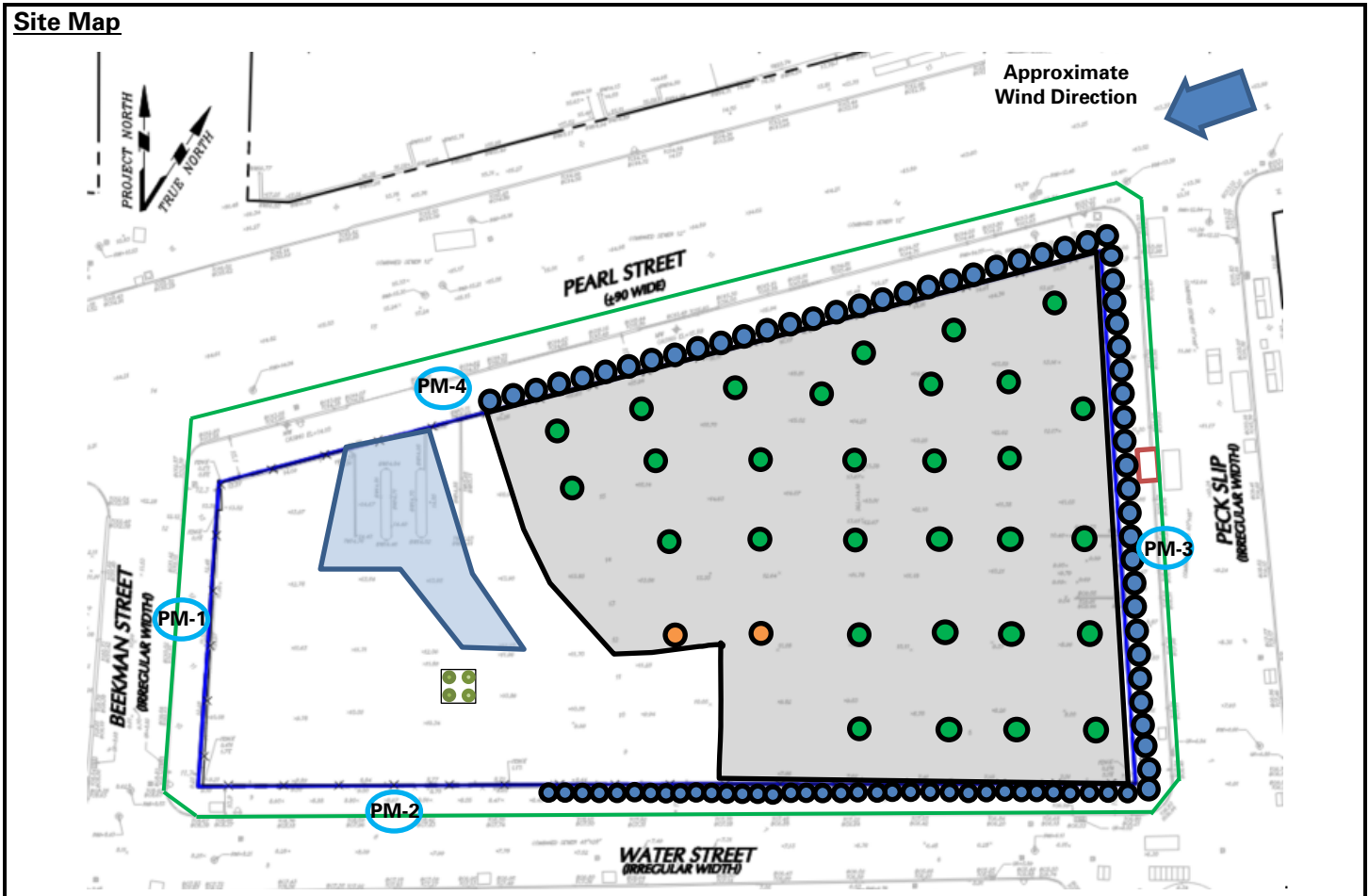
- Background concentrations of mercury vapor at each CAMP station ranged from 0.00 to 0.04  $\mu\text{g}/\text{m}^3$ .
- Background concentrations of VOCs at each CAMP station were recorded at 0.0 ppm.

### Anticipated Activities

- Suffolk and East Coast Drilling, Inc. (ECD) will continue mobilization in preparation for the next phase of remediation.

Cc:	M. Raygorodetsky, P. McMahon, M. Au, J. Frey	By:	Jack Millman
			<b>LANGAN</b>

## SITE OBSERVATION REPORT



**Legend:**

- PM-1 Approximate Location of Air Monitoring Station
- Approximate Work Area
- Approximate Location of Installed Pile Cap
- Approximate Location of Foundation Piles Completed
- Approximate Location of Truck Tracking Pad
- Approximate Location of Underground Storage Tank

**Notes:**

1) Locations of air monitoring stations are approximate.

- Approximate Location of 55-gallon drum
- Approximate Location of Soldier Pile
- Approximate Perimeter Construction Fence Location
- Previous Excavation Area
- Approximate Location of Documentation Sample
- Approximate Location of Previously Collected Endpoint Sample

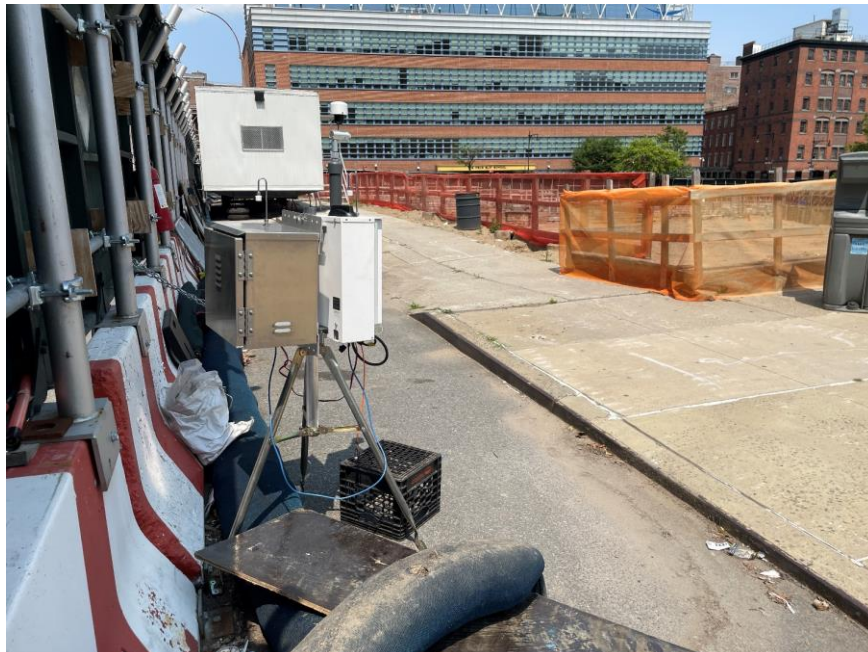
Cc:	M. Raygorodetsky, P. McMahon, M. Au, J. Frey	By:	Jack Millman <b>LANGAN</b>
-----	--	-----	-------------------------------

## SITE OBSERVATION REPORT

### Select Site Photographs:



**Photo 1:** General view of the site (facing west)



**Photo 2:** View of CAMP station PM-4 in the northwestern part of the site (facing southeast)

Cc:	M. Raygorodetsky, P. McMahon, M. Au, J. Frey	By:	Jack Millman
			<b>LANGAN</b>