

SITE OBSERVATION REPORT

<p>PROJECT No.: 170381202</p> <p>PROJECT: 250 Water Street</p> <p>LOCATION: New York, NY</p> <p>BCP SITE ID: C231127</p>	<p>CLIENT: 250 Seaport District, LLC c/o The Howard Hughes Corporation</p>	<p>DATE: Monday, November 20, 2023</p> <p>WEATHER: Sunny, 42 – 52 °F Wind: NE @ 0.2 – 2.4 mph</p> <p>TIME: 5:45am – 5:15pm</p> <p>MONITOR Gabriella DeGennaro</p>
<p>EQUIPMENT: CAT 335 Excavator CAT 328 Excavator Komatsu PC210 Excavator Delmag Drill Rig Bauer RTG RG 27S Bauer BG 36H Drill Rig Bauer BG45 Drill Rig Casagrande M6A-1 Tieback Drill Rig Jerome J505 Mercury Vapor Analyzer RKI GX-6000 Photoionization Detector (PID) Aeroqual ASQ1 Air Monitoring Station</p>	<p>PRESENT AT SITE: Day 254 Langan (Environmental/Geotechnical) Gabriella DeGennaro, Olivia O'Donnell, Pradeep Pandey Suffolk Construction (Suffolk) (General Contractor) Anthony Galu, Wyatt Favia East Coast Drilling, Inc. (ECD) (Foundation Contractor) Daniel Rogers, Mike Brosnan New York State Department of Environmental Conservation (NYSDEC) Marnie DeLuke AKRF, Inc. (Archaeologist) Theresa Imbriolo Earth Efficient (Soil Broker) Yinette Batista</p>	
<p>OBSERVATIONS, DISCUSSIONS, TEST RESULTS, ETC.:</p>		
<p>Langan was present to document remediation activities in accordance with the NYSDEC-approved November 2021 Remedial Action Work Plan (RAWP) at the 250 Water Street site (NYSDEC Brownfield Cleanup Program [BCP] Site No C231127).</p>		
<p>Site Activities</p>		
<ul style="list-style-type: none"> • ECD used a Bauer BG 36H drill rig to partially install one secant pile for the support-of-excavation (SOE) system in the western part of the site (along Beekman Street). The secant pile was advanced to a depth of about 124 feet below grade surface (bgs). <ul style="list-style-type: none"> ○ Drilling spoils generated during installation of the secant piles were screened for odors, staining, organic vapors, and mercury vapor using a handheld photoionization detector (PID) and handheld Jerome® J505 mercury vapor analyzer, respectively. Evidence of impacts was not observed and the drilling spoils were temporarily graded into the adjacent area for future off-site disposal. • ECD used a Bauer BG45 drill rig to install one deep soil mix column in the western part of the site (along Beekman Street) and one deep soil mix column in the northern part of the site (along Pearl Street) for the support-of-excavation (SOE) system. ECD's drill rig advanced a steel rod with two cutter blades at the bottom of the rod, while concurrently injecting grout through the cutting head and spinning and advancing the blades downward to depths of about 118 and 120 feet bgs, respectively. <ul style="list-style-type: none"> ○ No drilling spoils were generated during installation of the soil mix columns. ○ Excess grout was contained within a temporary containment area in the southern part of the site and will be managed as construction and demolition (C&D) debris at a later date. 		
<p>Cc:</p>	<p>M. Raygorodetsky, P. McMahon, M. Au, J. Frey, S. Simpson</p>	<p>By: Gabriella DeGennaro</p> <p style="text-align: center;">LANGAN</p>

SITE OBSERVATION REPORT

- ECD graded soil/fill in an about 20-foot-long by 20-foot-wide area in the southern part of the site and an about 15-foot-long by 30-foot-wide area in the southwest part of the site to stabilize the surface for equipment access.
 - Graded soil/fill was screened for odors, staining, organic vapors, and mercury vapor using a handheld PID and handheld Jerome® J505 mercury vapor analyzer, respectively. Evidence of impacts was not observed and excess soil/fill was not generated from grading activities.

Material Tracking

- ECD exported one truckload (about 20 cubic yards [CY]) of C&D debris for off-site disposal at the Earth Efficient MSM facility located in East Stroudsburg, PA.
- ECD exported nine truckloads (about 180 CY) of soil/fill for off-site disposal at the Middlesex County Landfill (MCUA) facility located in East Brunswick, NJ.
- No material was imported to site.

Material Import Summary								
Facility Name Location Type of Material	Stone Industries, Inc. Haledon, NJ 1.5/2.5-inch Virgin Stone		Stone Industries, Inc. Haledon, NJ 0.75-inch Virgin Stone		Impact Reuse & Recovery Center or Impact Materials Jersey City, Lyndhurst/Jersey City, NJ 1.5-inch Clean Bluestone		Impact Reuse & Recovery Center, Lyndhurst, NJ General Fill	
Quantities	No. of Loads	Approx. Volume (Tons)	No. of Loads	Approx. Volume (Tons)	No. of Loads	Approx. Volume (Tons)	No. of Loads	Approx. Volume (Tons)
Today	0	0	0	0	0	0	0	0
Project Total	16	382.13	0	0	15	339.65	374	9,157.85
NYSDEC Approved:	1,800 tons*			720 tons*		19,500 tons*		

*0.75-inch, 1.5-inch, and 2.5-inch virgin stone from the Stone Industries, Inc. facility and 1.5-inch clean bluestone from the Impact Reuse & Recovery Center (IRRC) facility were approved for import of 1,000 cubic yards (CY) and 400 CY, respectively. Assuming a conversion factor of 1.8, each quantity was converted to tons in order to accurately compare with import weight tickets. General fill from the IRRC facility was approved for import of 13,000 CY and a conversion factor of 1.5 is applied.

Material Export Summary (1 of 3)								
Facility Name Location Type of Material	Allocco Recycling Brooklyn, NY Construction & Demolition (C&D) Debris		IRRC Lyndhurst, NJ C&D Debris		Earth Efficient MSM East Stroudsburg, PA C&D Debris		Clean Earth of North Jersey Kearny, NJ Hazardous Lead-Impacted Soil/Fill	
Quantities	No. of Loads	Approx. Volume (CY)	No. of Loads	Approx. Volume (CY)	No. of Loads	Approx. Volume (CY)	No. of Loads	Approx. Volume (CY)
Today	0	0	0	0	1	20	0	0
Project Total	5	85	42	840	301	6,020	142	2,840

Cc:	M. Raygorodetsky, P. McMahon, M. Au, J. Frey, S. Simpson	By:	Gabriella DeGennaro LANGAN
-----	---	-----	--------------------------------------

SITE OBSERVATION REPORT

Material Export Summary (2 of 3)

Facility Name Location Type of Material	Middlesex County Landfill East Brunswick, NJ Non-hazardous Soil/Fill		Bayshore Soil Management Keasbey, NJ Petroleum-Impacted Soil/Fill		Clean Earth of Carteret, NJ Carteret, NJ Non-hazardous Soil/Fill	
Quantities	No. of Loads	Approx. Volume (CY)	No. of Loads	Approx. Volume (CY)	No. of Loads	Approx. Volume (CY)
Today	9	180	0	0	0	0
Project Total	407	8,140	267	5,340	66	1,320

Material Export Summary (3 of 3)

Facility Name Location Type of Material	Clean Earth of North Jersey Kearny, NJ Non-hazardous Soil/Fill		Cycle Chem, Inc. Elizabeth, NJ Hazardous Lead-Impacted Soil/Fill		Harmony Foul Rift (HFR) Belvidere, NJ Non-hazardous Soil/Fill	
Quantities	No. of Loads	Approx. Volume (CY)	No. of Loads	Approx. Volume (CY)	No. of Loads	Approx. Volume (CY)
Today	0	0	0	0	0	0
Project Total	201	4,020	17	340	135	2,700

Sampling

- No samples were collected.

Cc:	M. Raygorodetsky, P. McMahon, M. Au, J. Frey, S. Simpson	By:	Gabriella DeGennaro LANGAN
-----	--	-----	--------------------------------------

SITE OBSERVATION REPORT

CAMP Activities

Langan performed air monitoring at the perimeter of the site, at the northern sidewalk of Pearl Street, at the western sidewalk of Beekman Street, at the eastern sidewalk of Peck Slip, and at the southern sidewalk of Water Street at eight total locations for mercury vapor, volatile organic compounds (VOCs), and particulate matter less than 10 microns in diameter (PM10) from about 6:50am to 4:39pm. There were no fifteen-minute average concentrations for mercury vapor, VOCs or PM10 that approached or exceeded the action levels established by the CAMP (1.00 $\mu\text{g}/\text{m}^3$, 5.0 ppm, or 0.100 mg/m^3 , respectively).

Background Concentrations

Prior to implementation of CAMP, instantaneous background concentrations of mercury vapor and VOCs were recorded using a handheld Jerome® J505 mercury vapor analyzer and a handheld PID, respectively.

- Background concentrations of mercury vapor at each CAMP station were recorded at 0.00 $\mu\text{g}/\text{m}^3$.
- Background concentrations of VOCs at each CAMP station were recorded at 0.0 ppm.

Perimeter and Work Zone Concentrations

Daily Average Concentrations

Station ID	Particulate (mg/m^3)	Organic Vapor (ppm)	Mercury Vapor ($\mu\text{g}/\text{m}^3$)
PM-1	0.005	0.00	0.02
PM-2	0.003	0.00	0.02
PM-3	0.003	0.00	0.00
PM-4	0.007	0.00	0.02
WZ-1	0.003	0.00	-
WZ-2	0.002	0.00	0.00
WZ-3	0.002	0.00	0.00
WZ-4	0.003	0.00	0.01

Maximum 15-Minute-Average Concentrations

Station ID	Particulate (mg/m^3)	Organic Vapor (ppm)	Mercury Vapor ($\mu\text{g}/\text{m}^3$)
PM-1	0.014	0.01	0.06
PM-2	0.004	0.05	0.29
PM-3	0.005	0.01	0.01
PM-4	0.032	0.02	0.05
WZ-1	0.005	0.01	-
WZ-2	0.004	0.00	0.00
WZ-3	0.003	0.00	0.02
WZ-4	0.005	0.01	0.02

● mg/m^3 = milligrams per cubic meter ● ppm = parts per million ● $\mu\text{g}/\text{m}^3$ = micrograms per cubic meter

Cc:	M. Raygorodetsky, P. McMahon, M. Au, J. Frey, S. Simpson	By:	Gabriella DeGennaro
			LANGAN

SITE OBSERVATION REPORT

Equipment Troubleshooting

- Mercury vapor data from off-site CAMP station WZ-1 was not recorded throughout the day due to a datalogging issue which resulted in mercury vapor data not being transmitted to the remote telemetry system. The Jerome® J505 unit was reconfigured at the end of the day and will be replaced with the spare unit should the datalogging issue continue. The location of off-site CAMP station WZ-1 was periodically screened using the handheld Jerome® J505 unit, and mercury vapor concentrations were not recorded above background conditions. Additionally, mercury vapor was not recorded at concentrations above background conditions at perimeter station CAMP station PM-1 (between the work area and the location of off-site CAMP station WZ-1) throughout the work day.

Ambient Air (Handheld Jerome® J505 and Handheld PID)

- The dedicated mobile monitor (Langan) used a handheld Jerome® J505 mercury vapor analyzer to monitor ambient air conditions at various heights throughout the site. Instantaneous mercury vapor concentrations throughout the site ranged from 0.00 $\mu\text{g}/\text{m}^3$ to 0.11 $\mu\text{g}/\text{m}^3$.
- The dedicated mobile monitor (Langan) used a handheld PID to monitor VOC concentrations throughout the site. Instantaneous VOC concentrations were not detected above background concentrations throughout the workday.

Off-site CAMP Stations

- CAMP station WZ-1 was placed on the western sidewalk of Beekman Street from about 6:44am to 4:53pm.
- CAMP station WZ-2 was placed on the southern sidewalk of Water Street from about 6:12am to 4:35pm.
- CAMP station WZ-3 was placed on the eastern sidewalk of Peck Slip from about 6:23am to 4:23pm.
- CAMP station WZ-4 was placed on the northern sidewalk of Pearl Street from about 6:31am to 4:29pm.

Prior to CAMP Shutdown

Prior to discontinuing CAMP, mercury vapor and VOC concentrations were confirmed to return to background conditions at each perimeter station using the handheld Jerome® J505 mercury vapor analyzer and handheld PID, respectively. Perimeter CAMP stations were discontinued sequentially between 4:39 pm and 4:52pm.

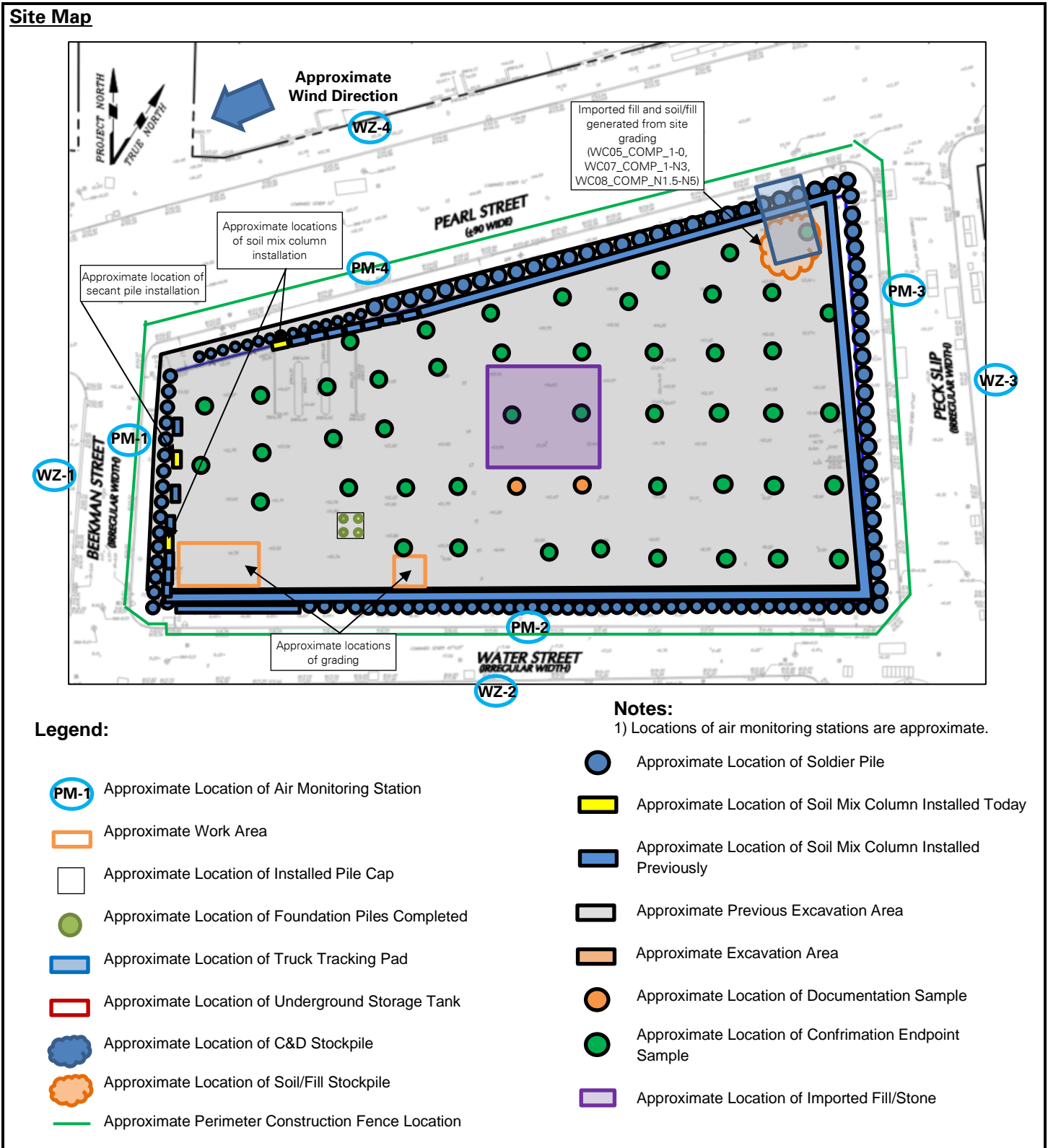
- Background concentrations of mercury vapor at each CAMP station were recorded at 0.00 $\mu\text{g}/\text{m}^3$.
- Background concentrations of VOCs at each CAMP station were recorded at 0.0 ppm.

Anticipated Activities

- ECD will continue exporting soil/fill across the site for off-site disposal.
- ECD will continue installing soil mix columns and/or secant piles for SOE system installation along Beekman and Pearl Streets.
- ECD will continue installing tiebacks for the SOE system along Beekman and Pearl Streets.

Cc:	M. Raygorodetsky, P. McMahon, M. Au, J. Frey, S. Simpson	By:	Gabriella DeGennaro LANGAN
-----	---	-----	--------------------------------------

SITE OBSERVATION REPORT



Cc:	M. Raygorodetsky, P. McMahon, M. Au, J. Frey, S. Simpson	By:	Gabriella DeGennaro LANGAN
-----	--	-----	--------------------------------------

SITE OBSERVATION REPORT

Select Site Photographs:

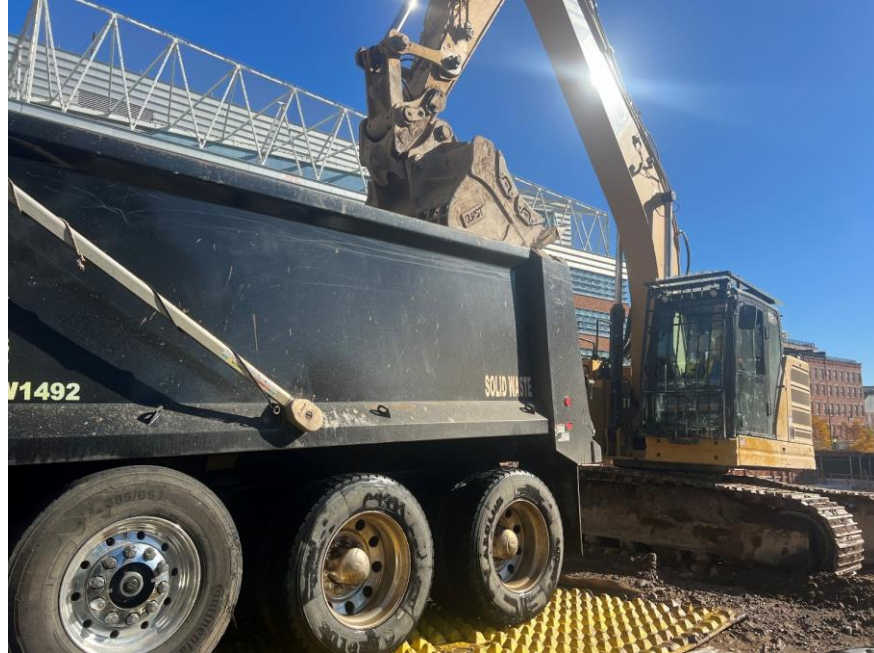


Photo 1: ECD loading a truck with non-hazardous soil/fill for off-site disposal (facing southeast)

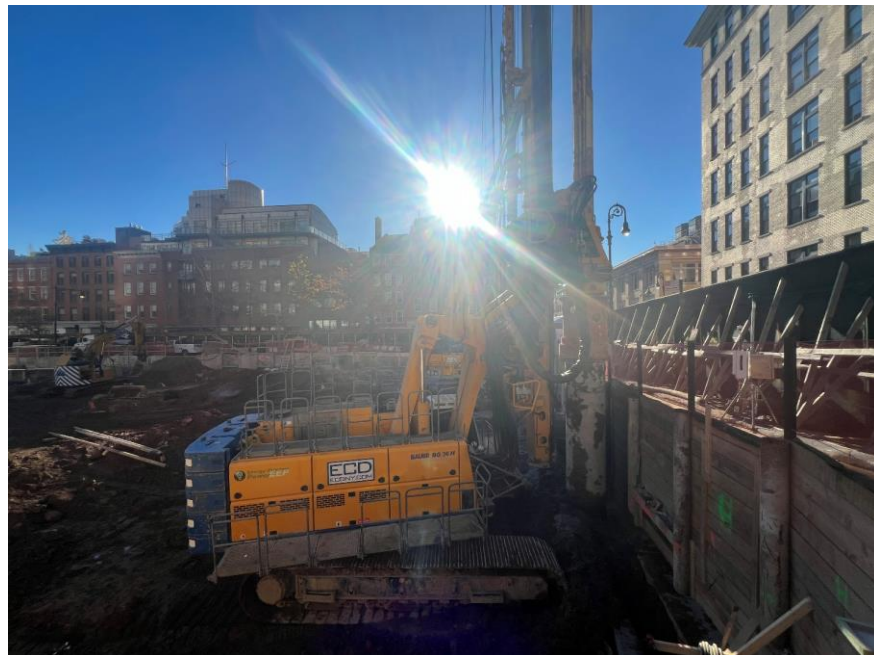


Photo 2: ECD installing a secant pile in the western part of site (facing south)

Cc:	M. Raygorodetsky, P. McMahon, M. Au, J. Frey, S. Simpson	By:	Gabriella DeGennaro LANGAN
-----	--	-----	--------------------------------------