



Impact Environmental Engineering Geology, PLLC

170 Keyland Court | Bohemia | NY | 11716 | 631.269.8800 welcome to solid ground...
 www.impactenvironmental.com

DAILY FIELD REPORT

WEATHER	Snow	Rain	Overcast	Partly Cloudy	X	Bright Sun
TEMP.	< 32	32-50	50-70	70-85	X	>85+

Prepared By: Josue Criollo

IEC Project No:	21490	NYSDEC BCP Site No:	C231127	Date:	06/12/26
Project:	250 WATER STREET, NEW YORK, NEW YORK				

<p>Consultant: Impact Environmental Engineering and Geology, PLLC (IEEG)</p> <p>Time On: 06:20 Time Out: 09:20</p>	<p>Primary Personnel On Site:</p> <ul style="list-style-type: none"> • IEEG (Environmental) – Josue Criollo • Ancora Engineering & Architecture (Ancora) – Maria Mammoliti • Aquifer Drilling & Testing, Inc (ADT)
---	--

Scope of Work:

- IEEG performed air monitoring during site activities in accordance with the Community Air Monitoring Plan (CAMP), as required by the Site Management Plan dated December 28, 2023, for particulate matter less than 10 microns in diameter (PM¹⁰) and VOCs at four (4) Site perimeter monitoring stations. The web-based environmental data management supported by Environet was used to provide near real-time access to air monitoring results using telemetry from the monitoring consoles in the field.

Site Activities:

- Geotechnical investigation borings.
- ADT arrived at 0620 to continue geotechnical investigations.
- ADT began to backfill borehole AB-2 between 0700 and 0720. Installation of one (1) 2-inch stickup observatory well at AB-2 to a depth of approximately 11.5 feet below current Site grade occurred between 0725 and 0850. Work is within an excavation and about 13.5 feet below sidewalk elevation.
- ADT generated and left two (2) 55-gallon drums containing wastewater derived from the geotechnical investigation activities. The drums were staged on-site for subsequent off-site disposal.
- IEEG established a standby Biosolve® application station adjacent to the work area to provide odor control, as needed. The drilling and dust suppression water source was supplied from a hydrant at the corner of Water Street and Beekman Street.

Community Air Monitoring Program (CAMP)

- CAMP units (Pearl Street, Water Street, Beekman Street, and Peck Slip) were set up at approximately 07:00 AM (refer to attached site map for locations and enclosed raw console data) for dust and vapor monitoring.
- Photoionization (PID) detections remained within pre-drilling range or slightly above the normal background of 0.049 parts per million by volume (ppm) throughout the day.
- No sustained dust exceedances were observed over a 15-minute time-weighted average period during monitoring. No airborne or visible dust was observed throughout the day.
- No site-specific petroleum and/or chemical odors were apparent during drilling.



Impact Environmental Engineering Geology, PLLC

170 Keyland Court | Bohemia | NY | 11716 | 631.269.8800 welcome to solid ground...
www.impactenvironmental.com

CAMP DATA	Startup PID (TWA)	Min. PID (TWA)	Max PID (TWA)	Startup Dust (TOTAL)	Min. Dust (TWA)	Max Dust (TWA)
Pearl St	0.000 ppm	0.000 ppm	0.000 ppm	0.026 mg/m ³	0.023 mg/m ³	0.028 mg/m ³
Water St	0.000 ppm	0.000 ppm	0.049 ppm	0.033 mg/m ³	0.023 mg/m ³	0.032 mg/m ³
Beekman St	0.000 ppm	0.000 ppm	0.000 ppm	0.041 mg/m ³	0.038 mg/m ³	0.051 mg/m ³
Peck Slip	0.000 ppm	0.000 ppm	0.000 ppm	0.000 mg/m ³	0.000 mg/m ³	0.007 mg/m ³

Problems Encountered:

- None.

Planned Activity:

- None.

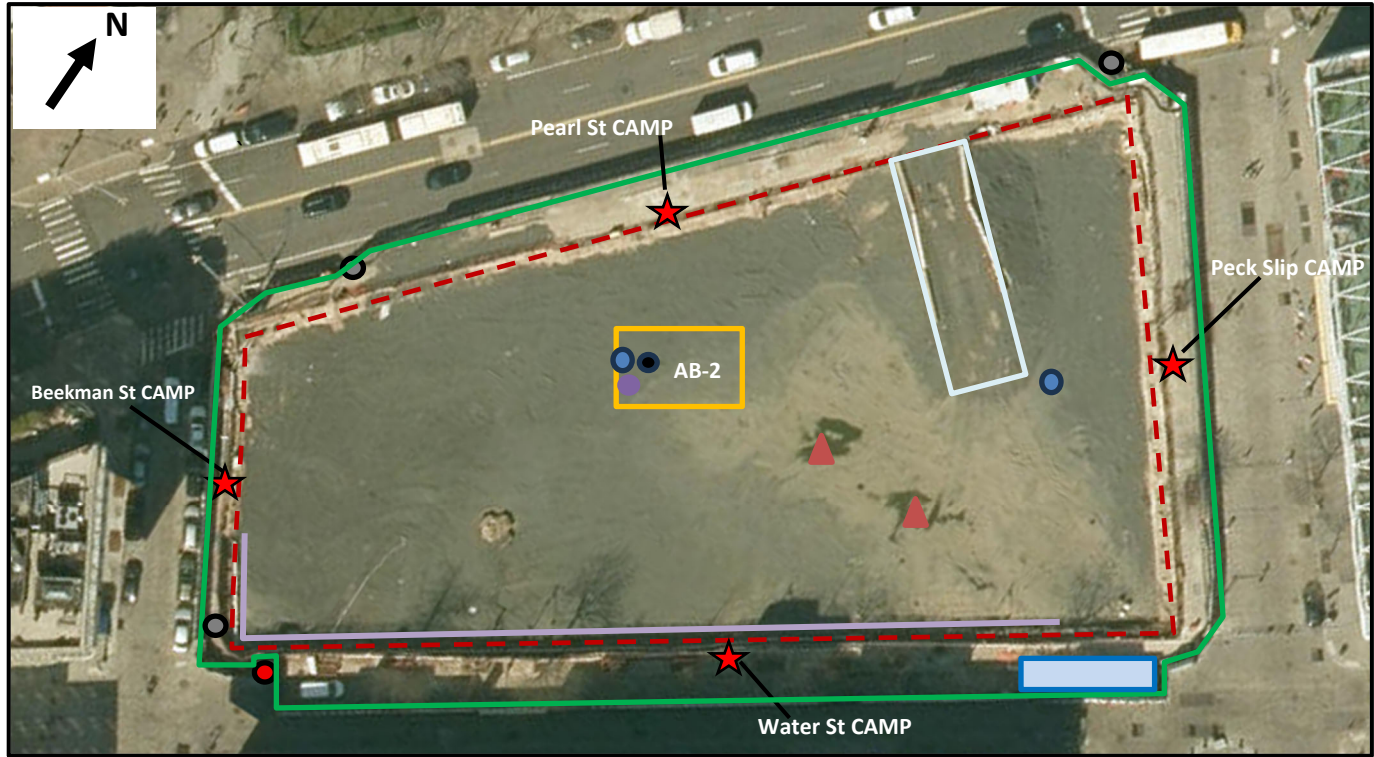


Impact Environmental Engineering Geology, PLLC

170 Keyland Court | Bohemia | NY | 11716 | 631.269.8800 welcome to solid ground...
 www.impactenvironmental.com

SITE ACTIVITY MAP

Approximate Wind Direction:
 West-northwest – 6-7 mph



Notes: Basemap is referenced from NYS DECinfo Locator.

Legend			
	CAMP Stations		Property Boundary
	Construction Site Boundary		Work Area/Zone
	Inactive Dewatering Header Pipe		Used Fire Hydrant
	Geotechnical Boring Location		Temporary Site Ramp
	Staged 55-gallon Drum		Inactive Sump Pump
			Unused Fire Hydrant
			On-Site Weir Tank
			Standby Biosolve Application Station



Impact Environmental Engineering Geology, PLLC

170 Keyland Court | Bohemia | NY | 11716 | 631.269.8800 welcome to solid ground...
www.impactenvironmental.com

PHOTO LOG

Photo 1 – Photo facing north-northeast of ADT backfilling borehole at AB-2.



Photo 2 – Photo facing east of ADT installing sand pack around the newly installed observatory well at AB-2.





Impact Environmental Engineering Geology, PLLC

170 Keyland Court | Bohemia NY | 11716 | 631.269.8800 welcome to solid ground...
www.impactenvironmental.com

Photo 3 – Photo of periodic PID reading within the work area.



Photo 4 – Photo facing east of the newly installed observatory well and a 55-gal drum staged on-site.





Impact Environmental Engineering Geology, PLLC

170 Keyland Court | Bohemia | NY | 11716 | 631.269.8800 welcome to solid ground...
www.impactenvironmental.com

Photo 5 – Photo facing east of general Site conditions post geotechnical investigation activities.



Photo 6 – Photo facing east-southeast of the Pearl Street CAMP station.



Particulate Data
250 Water Street, New York, New York

CAMP Station Location:	Pearl St		Beekman St		Peck Slip		Water St	
Dust Trak S/N:	8533181205		8530224603		8530220914		8530220911	
EnviroNet Device No:	28078291 [28078291]		28073555 [28073555]		28582526 [28582526]		228816 [28631953]	
Timestamp (America/New_York)	Mass Conc. (mg/m3)	TWA (mg/m3)	Mass Conc. (mg/m3)	TWA (mg/m3)	Mass Conc. (mg/m3)	TWA (mg/m3)	Mass Conc. (mg/m3)	TWA (mg/m3)
6/12/2026 7:00	0.026	-	0.041	-	0	-	0.033	-
6/12/2026 7:01	0.026	-	0.039	-	0	-	0.033	-
6/12/2026 7:02	0.025	-	0.04	-	0	-	0.033	-
6/12/2026 7:03	0.024	-	0.04	-	0	-	0.032	-
6/12/2026 7:04	0.024	-	0.04	-	0	-	0.032	-
6/12/2026 7:05	0.027	-	0.041	-	0	-	0.031	-
6/12/2026 7:06	0.026	-	0.04	-	0	-	0.031	-
6/12/2026 7:07	0.028	-	0.038	-	0	-	0.031	-
6/12/2026 7:08	0.025	-	0.039	-	0	-	0.031	-
6/12/2026 7:09	0.025	-	0.039	-	0	-	0.03	-
6/12/2026 7:10	0.023	-	0.037	-	0	-	0.03	-
6/12/2026 7:11	0.023	-	0.037	-	0	-	0.029	-
6/12/2026 7:12	0.023	-	0.037	-	0	-	0.028	-
6/12/2026 7:13	0.023	-	0.037	-	0	-	0.028	-
6/12/2026 7:14	0.023	0.025	0.036	0.039	0	0.000	0.028	0.031
6/12/2026 7:15	0.022	0.024	0.037	0.038	0	0.000	0.027	0.030
6/12/2026 7:16	0.023	0.024	0.04	0.039	0	0.000	0.028	0.030
6/12/2026 7:17	0.026	0.024	0.045	0.039	0	0.000	0.029	0.030
6/12/2026 7:18	0.026	0.024	0.044	0.039	0	0.000	0.031	0.030
6/12/2026 7:19	0.027	0.025	0.043	0.039	0	0.000	0.034	0.030
6/12/2026 7:20	0.028	0.025	0.048	0.040	0	0.000	0.034	0.030
6/12/2026 7:21	0.029	0.025	0.048	0.040	0	0.000	0.035	0.030
6/12/2026 7:22	0.027	0.025	0.047	0.041	0	0.000	0.035	0.030
6/12/2026 7:23	0.026	0.025	0.044	0.041	0	0.000	0.034	0.031
6/12/2026 7:24	0.026	0.025	0.044	0.042	0	0.000	0.032	0.031
6/12/2026 7:25	0.025	0.025	0.044	0.042	0	0.000	0.031	0.031
6/12/2026 7:26	0.025	0.025	0.043	0.042	0	0.000	0.03	0.031
6/12/2026 7:27	0.024	0.025	0.043	0.043	0	0.000	0.03	0.031
6/12/2026 7:28	0.024	0.025	0.045	0.043	0	0.000	0.028	0.031
6/12/2026 7:29	0.026	0.026	0.046	0.044	0	0.000	0.031	0.031
6/12/2026 7:30	0.026	0.026	0.043	0.044	0	0.000	0.031	0.032
6/12/2026 7:31	0.026	0.026	0.041	0.045	0	0.000	0.031	0.032
6/12/2026 7:32	0.026	0.026	0.041	0.044	0	0.000	0.028	0.032
6/12/2026 7:33	0.025	0.026	0.041	0.044	0	0.000	0.028	0.031
6/12/2026 7:34	0.022	0.026	0.04	0.044	0	0.000	0.028	0.031
6/12/2026 7:35	0.022	0.025	0.04	0.043	0	0.000	0.027	0.031
6/12/2026 7:36	0.02	0.025	0.04	0.043	0	0.000	0.026	0.030
6/12/2026 7:37	0.021	0.024	0.038	0.042	0	0.000	0.027	0.029
6/12/2026 7:38	0.021	0.024	0.04	0.042	0	0.000	0.027	0.029
6/12/2026 7:39	0.022	0.024	0.039	0.042	0	0.000	0.026	0.029
6/12/2026 7:40	0.021	0.023	0.038	0.041	0	0.000	0.025	0.028
6/12/2026 7:41	0.022	0.023	0.037	0.041	0	0.000	0.025	0.028
6/12/2026 7:42	0.022	0.023	0.037	0.040	0	0.000	0.027	0.028
6/12/2026 7:43	0.024	0.023	0.04	0.040	0	0.000	0.024	0.027
6/12/2026 7:44	0.024	0.023	0.04	0.040	0	0.000	0.025	0.027
6/12/2026 7:45	0.024	0.023	0.041	0.040	0	0.000	0.026	0.027
6/12/2026 7:46	0.024	0.023	0.042	0.040	0	0.000	0.027	0.026
6/12/2026 7:47	0.026	0.023	0.042	0.040	0	0.000	0.028	0.026
6/12/2026 7:48	0.023	0.023	0.043	0.040	0	0.000	0.027	0.026
6/12/2026 7:49	0.023	0.023	0.041	0.040	0	0.000	0.026	0.026
6/12/2026 7:50	0.021	0.023	0.04	0.040	0	0.000	0.025	0.026
6/12/2026 7:51	0.022	0.023	0.039	0.040	0	0.000	0.023	0.026
6/12/2026 7:52	0.023	0.023	0.04	0.040	0	0.000	0.025	0.026
6/12/2026 7:53	0.024	0.023	0.042	0.040	0	0.000	0.025	0.026
6/12/2026 7:54	0.023	0.023	0.04	0.040	0	0.000	0.024	0.025
6/12/2026 7:55	0.024	0.023	0.04	0.040	0	0.000	0.024	0.025
6/12/2026 7:56	0.023	0.023	0.039	0.040	0	0.000	0.025	0.025
6/12/2026 7:57	0.022	0.023	0.039	0.041	0	0.000	0.025	0.025
6/12/2026 7:58	0.022	0.023	0.039	0.040	0	0.000	0.024	0.025
6/12/2026 7:59	0.022	0.023	0.039	0.040	0	0.000	0.024	0.025
6/12/2026 8:00	0.024	0.023	0.039	0.040	0	0.000	0.024	0.025
6/12/2026 8:01	0.023	0.023	0.04	0.040	0	0.000	0.025	0.025
6/12/2026 8:02	0.023	0.023	0.041	0.040	0	0.000	0.024	0.025
6/12/2026 8:03	0.024	0.023	0.044	0.040	0	0.000	0.026	0.025
6/12/2026 8:04	0.024	0.023	0.04	0.040	0.01	0.001	0.028	0.025
6/12/2026 8:05	0.023	0.023	0.042	0.040	0.009	0.001	0.025	0.025
6/12/2026 8:06	0.026	0.023	0.046	0.041	0.028	0.003	0.029	0.025
6/12/2026 8:07	0.023	0.023	0.044	0.041	0.013	0.004	0.03	0.025
6/12/2026 8:08	0.024	0.023	0.044	0.041	0.011	0.005	0.029	0.026
6/12/2026 8:09	0.025	0.023	0.044	0.041	0.032	0.007	0.029	0.026
6/12/2026 8:10	0.026	0.024	0.043	0.042	0.004	0.007	0.027	0.026
6/12/2026 8:11	0.022	0.024	0.042	0.042	0	0.007	0.025	0.026
6/12/2026 8:12	0.021	0.023	0.038	0.042	0	0.007	0.023	0.026
6/12/2026 8:13	0.02	0.023	0.039	0.042	0	0.007	0.022	0.026
6/12/2026 8:14	0.022	0.023	0.041	0.042	0	0.007	0.023	0.026
6/12/2026 8:15	0.022	0.023	0.041	0.042	0	0.007	0.024	0.026

Particulate Data
250 Water Street, New York, New York

6/12/2026 8:16	0.025	0.023	0.041	0.042	0	0.007	0.023	0.026
6/12/2026 8:17	0.023	0.023	0.041	0.042	0	0.007	0.024	0.026
6/12/2026 8:18	0.025	0.023	0.042	0.042	0	0.007	0.026	0.026
6/12/2026 8:19	0.025	0.023	0.042	0.042	0	0.006	0.025	0.026
6/12/2026 8:20	0.025	0.024	0.042	0.042	0	0.006	0.024	0.026
6/12/2026 8:21	0.026	0.024	0.043	0.042	0	0.004	0.027	0.025
6/12/2026 8:22	0.024	0.024	0.044	0.042	0	0.003	0.029	0.025
6/12/2026 8:23	0.025	0.024	0.047	0.042	0	0.002	0.028	0.025
6/12/2026 8:24	0.025	0.024	0.046	0.042	0	0.000	0.029	0.025
6/12/2026 8:25	0.025	0.024	0.048	0.042	0	0.000	0.027	0.025
6/12/2026 8:26	0.026	0.024	0.049	0.043	0	0.000	0.03	0.026
6/12/2026 8:27	0.028	0.024	0.052	0.044	0	0.000	0.032	0.026
6/12/2026 8:28	0.03	0.025	0.051	0.045	0	0.000	0.032	0.027
6/12/2026 8:29	0.028	0.025	0.054	0.046	0	0.000	0.028	0.027
6/12/2026 8:30	0.024	0.026	0.054	0.046	0	0.000	0.026	0.027
6/12/2026 8:31	0.025	0.026	0.051	0.047	0	0.000	0.025	0.027
6/12/2026 8:32	0.027	0.026	0.047	0.047	0	0.000	0.026	0.028
6/12/2026 8:33	0.028	0.026	0.056	0.048	0	0.000	0.031	0.028
6/12/2026 8:34	0.028	0.026	0.05	0.049	0	0.000	0.029	0.028
6/12/2026 8:35	0.027	0.026	0.047	0.049	0	0.000	0.029	0.029
6/12/2026 8:36	0.026	0.026	0.05	0.050	0	0.000	0.029	0.029
6/12/2026 8:37	0.029	0.027	0.052	0.050	0	0.000	0.029	0.029
6/12/2026 8:38	0.033	0.027	0.053	0.051	0	0.000	0.029	0.029
6/12/2026 8:39	0.027	0.027	0.053	0.051	0	0.000	0.029	0.029
6/12/2026 8:40	0.025	0.027	0.05	0.051	0	0.000	0.025	0.029
6/12/2026 8:41	0.024	0.027	0.045	0.051	0	0.000	0.043	0.029
6/12/2026 8:42	0.024	0.027	0.042	0.050	0	0.000	0.022	0.029
6/12/2026 8:43	0.029	0.027	0.043	0.050	0	0.000	0.022	0.028
6/12/2026 8:44	0.032	0.027	0.044	0.049	0	0.000	0.022	0.028
6/12/2026 8:45	0.028	0.027	0.045	0.049	0	0.000	0.024	0.028
6/12/2026 8:46	0.026	0.028	0.046	0.048	0	0.000	0.027	0.028
6/12/2026 8:47	0.026	0.027	0.047	0.048	0	0.000	0.027	0.028
6/12/2026 8:48	0.028	0.027	0.05	0.048	0	0.000	0.026	0.027
6/12/2026 8:49	0.03	0.028	0.048	0.048	0	0.000	0.027	0.027
6/12/2026 8:50	0.027	0.028	0.049	0.048	0	0.000	0.027	0.027
6/12/2026 8:51	0.026	0.028	0.053	0.048	0	0.000	0.026	0.027
6/12/2026 8:52	0.026	0.027	0.053	0.048	0	0.000	0.025	0.027
6/12/2026 8:53	0.029	0.027	0.053	0.048	0	0.000	0.022	0.026
6/12/2026 8:54	0.029	0.027	0.051	0.048	0	0.000	0.022	0.026
6/12/2026 8:55	0.027	0.027	0.051	0.048	0	0.000	0.022	0.026
6/12/2026 8:56	0.028	0.028	0.045	0.048	0	0.000	0.022	0.024
6/12/2026 8:57	0.026	0.028	0.04	0.048	0	0.000	0.019	0.024
6/12/2026 8:58	0.022	0.027	0.038	0.048	0	0.000	0.019	0.024
6/12/2026 8:59	0.026	0.027	0.038	0.047	0	0.000	0.02	0.024
6/12/2026 9:00	0.023	0.027	0.04	0.047	0	0.000	0.022	0.024
6/12/2026 9:01	0.024	0.026	0.041	0.046	0	0.000	0.023	0.023
6/12/2026 9:02	0.026	0.026	0.043	0.046	0	0.000	0.025	0.023
6/12/2026 9:03	0.025	0.026	0.045	0.046	0	0.000	0.026	0.023
6/12/2026 9:04	0.025	0.026	0.046	0.046	0	0.000	0.025	0.023
6/12/2026 9:05	0.025	0.026	0.046	0.046	0	0.000	0.026	0.023
6/12/2026 9:06	0.024	0.026	0.046	0.045	0	0.000	0.025	0.023
6/12/2026 9:07	0.025	0.026	0.045	0.045	0	0.000	0.026	0.023
6/12/2026 9:08	0.024	0.025	0.045	0.044	0	0.000	0.027	0.023
6/12/2026 9:09	0.026	0.025	0.047	0.044	0	0.000	0.028	0.024
6/12/2026 9:10	0.026	0.025	0.049	0.044	0	0.000	0.029	0.024
6/12/2026 9:11	0.027	0.025	0.048	0.044	0	0.000	0.029	0.025
6/12/2026 9:12	0.026	0.025	0.044	0.044	0	0.000	0.027	0.025
6/12/2026 9:13	0.021	0.025	0.042	0.044	0	0.000	0.025	0.026
6/12/2026 9:14	0.02	0.024	0.045	0.045	0	0.000	0.023	0.026
6/12/2026 9:15	0.024	0.025	0.045	0.045	0	0.000	0.031	0.026
6/12/2026 9:16	-	0.025	0.044	0.045	0	0.000	0.025	0.026
6/12/2026 9:17	-	0.024	0.044	0.045	0	0.000	0.025	0.026
6/12/2026 9:18	-	0.024	0.044	0.045	-	0.000	0.024	0.026
6/12/2026 9:19	-	0.024	0.044	0.045	-	0.000	0.023	0.026
6/12/2026 9:20	-	0.024	0.045	0.045	-	0.000	0.023	0.026

PID Data
250 Water Street, New York, New York

CAMP Station Location:	Pearl St	Beekman St	Peck Slip	Water St
PID S/N:	592-901589	592-913740	592-602921	592-602922
EnviroNet Device No:	2B078291 [2B078291]	2B073555 [2B073555]	2B582526 [2B582526]	228816 [2B631953]
Timestamp (America/New_York)	VOC (TWA) (ppm)	VOC (TWA) (ppm)	VOC (TWA) (ppm)	VOC (TWA) (ppm)
6/12/2026 7:00	0.000	0.000	0.000	0.000
6/12/2026 7:01	0.000	0.000	0.000	0.000
6/12/2026 7:02	0.000	0.000	0.000	0.000
6/12/2026 7:03	0.000	0.000	0.000	0.000
6/12/2026 7:04	0.000	0.000	0.000	0.000
6/12/2026 7:05	0.000	0.000	0.000	0.000
6/12/2026 7:06	0.000	0.000	0.000	0.000
6/12/2026 7:07	0.000	0.000	0.000	0.000
6/12/2026 7:08	0.000	0.000	0.000	0.000
6/12/2026 7:09	0.000	0.000	0.000	0.000
6/12/2026 7:10	0.000	0.000	0.000	0.000
6/12/2026 7:11	0.000	0.000	0.000	0.000
6/12/2026 7:12	0.000	0.000	0.000	0.000
6/12/2026 7:13	0.000	0.000	0.000	0.000
6/12/2026 7:14	0.000	0.000	0.000	0.000
6/12/2026 7:15	0.000	0.000	0.000	0.000
6/12/2026 7:16	0.000	0.000	0.000	0.000
6/12/2026 7:17	0.000	0.000	0.000	0.000
6/12/2026 7:18	0.000	0.000	0.000	0.000
6/12/2026 7:19	0.000	0.000	0.000	0.000
6/12/2026 7:20	0.000	0.000	0.000	0.000
6/12/2026 7:21	0.000	0.000	0.000	0.000
6/12/2026 7:22	0.000	0.000	0.000	0.000
6/12/2026 7:23	0.000	0.000	0.000	0.000
6/12/2026 7:24	0.000	0.000	0.000	0.000
6/12/2026 7:25	0.000	0.000	0.000	0.000
6/12/2026 7:26	0.000	0.000	0.000	0.000
6/12/2026 7:27	0.000	0.000	0.000	0.000
6/12/2026 7:28	0.000	0.000	0.000	0.000
6/12/2026 7:29	0.000	0.000	0.000	0.000
6/12/2026 7:30	0.000	0.000	0.000	0.000
6/12/2026 7:31	0.000	0.000	0.000	0.000
6/12/2026 7:32	0.000	0.000	0.000	0.001
6/12/2026 7:33	0.000	0.000	0.000	0.001
6/12/2026 7:34	0.000	0.000	0.000	0.001
6/12/2026 7:35	0.000	0.000	0.000	0.001
6/12/2026 7:36	0.000	0.000	0.000	0.001
6/12/2026 7:37	0.000	0.000	0.000	0.001
6/12/2026 7:38	0.000	0.000	0.000	0.001
6/12/2026 7:39	0.000	0.000	0.000	0.002
6/12/2026 7:40	0.000	0.000	0.000	0.002
6/12/2026 7:41	0.000	0.000	0.000	0.002
6/12/2026 7:42	0.000	0.000	0.000	0.002
6/12/2026 7:43	0.000	0.000	0.000	0.002
6/12/2026 7:44	0.000	0.000	0.000	0.003
6/12/2026 7:45	0.000	0.000	0.000	0.003
6/12/2026 7:46	0.000	0.000	0.000	0.003
6/12/2026 7:47	0.000	0.000	0.000	0.003

PID Data
250 Water Street, New York, New York

6/12/2026 7:48	0.000	0.000	0.000	0.003
6/12/2026 7:49	0.000	0.000	0.000	0.004
6/12/2026 7:50	0.000	0.000	0.000	0.004
6/12/2026 7:51	0.000	0.000	0.000	0.004
6/12/2026 7:52	0.000	0.000	0.000	0.004
6/12/2026 7:53	0.000	0.000	0.000	0.005
6/12/2026 7:54	0.000	0.000	0.000	0.005
6/12/2026 7:55	0.000	0.000	0.000	0.005
6/12/2026 7:56	0.000	0.000	0.000	0.005
6/12/2026 7:57	0.000	0.000	0.000	0.006
6/12/2026 7:58	0.000	0.000	0.000	0.006
6/12/2026 7:59	0.000	0.000	0.000	0.006
6/12/2026 8:00	0.000	0.000	0.000	0.007
6/12/2026 8:01	0.000	0.000	0.000	0.007
6/12/2026 8:02	0.000	0.000	0.000	0.007
6/12/2026 8:03	0.000	0.000	0.000	0.008
6/12/2026 8:04	0.000	0.000	0.000	0.008
6/12/2026 8:05	0.000	0.000	0.000	0.008
6/12/2026 8:06	0.000	0.000	0.000	0.009
6/12/2026 8:07	0.000	0.000	0.000	0.009
6/12/2026 8:08	0.000	0.000	0.000	0.009
6/12/2026 8:09	0.000	0.000	0.000	0.010
6/12/2026 8:10	0.000	0.000	0.000	0.010
6/12/2026 8:11	0.000	0.000	0.000	0.011
6/12/2026 8:12	0.000	0.000	0.000	0.011
6/12/2026 8:13	0.000	0.000	0.000	0.012
6/12/2026 8:14	0.000	0.000	0.000	0.012
6/12/2026 8:15	0.000	0.000	0.000	0.012
6/12/2026 8:16	0.000	0.000	0.000	0.013
6/12/2026 8:17	0.000	0.000	0.000	0.013
6/12/2026 8:18	0.000	0.000	0.000	0.014
6/12/2026 8:19	0.000	0.000	0.000	0.014
6/12/2026 8:20	0.000	0.000	0.000	0.015
6/12/2026 8:21	0.000	0.000	0.000	0.015
6/12/2026 8:22	0.000	0.000	0.000	0.016
6/12/2026 8:23	0.000	0.000	0.000	0.016
6/12/2026 8:24	0.000	0.000	0.000	0.017
6/12/2026 8:25	0.000	0.000	0.000	0.017
6/12/2026 8:26	0.000	0.000	0.000	0.018
6/12/2026 8:27	0.000	0.000	0.000	0.018
6/12/2026 8:28	0.000	0.000	0.000	0.018
6/12/2026 8:29	0.000	0.000	0.000	0.019
6/12/2026 8:30	0.000	0.000	0.000	0.019
6/12/2026 8:31	0.000	0.000	0.000	0.020
6/12/2026 8:32	0.000	0.000	0.000	0.020
6/12/2026 8:33	0.000	0.000	0.000	0.021
6/12/2026 8:34	0.000	0.000	0.000	0.021
6/12/2026 8:35	0.000	0.000	0.000	0.022
6/12/2026 8:36	0.000	0.000	0.000	0.022
6/12/2026 8:37	0.000	0.000	0.000	0.023
6/12/2026 8:38	0.000	0.000	0.000	0.024
6/12/2026 8:39	0.000	0.000	0.000	0.024

PID Data
250 Water Street, New York, New York

6/12/2026 8:40	0.000	0.000	0.000	0.025
6/12/2026 8:41	0.000	0.000	0.000	0.025
6/12/2026 8:42	0.000	0.000	0.000	0.026
6/12/2026 8:43	0.000	0.000	0.000	0.026
6/12/2026 8:44	0.000	0.000	0.000	0.027
6/12/2026 8:45	0.000	0.000	0.000	0.028
6/12/2026 8:46	0.000	0.000	0.000	0.028
6/12/2026 8:47	0.000	0.000	0.000	0.029
6/12/2026 8:48	0.000	0.000	0.000	0.029
6/12/2026 8:49	0.000	0.000	0.000	0.030
6/12/2026 8:50	0.000	0.000	0.000	0.030
6/12/2026 8:51	0.000	0.000	0.000	0.031
6/12/2026 8:52	0.000	0.000	0.000	0.032
6/12/2026 8:53	0.000	0.000	0.000	0.032
6/12/2026 8:54	0.000	0.000	0.000	0.033
6/12/2026 8:55	0.000	0.000	0.000	0.034
6/12/2026 8:56	0.000	0.000	0.000	0.034
6/12/2026 8:57	0.000	0.000	0.000	0.035
6/12/2026 8:58	0.000	0.000	0.000	0.035
6/12/2026 8:59	0.000	0.000	0.000	0.036
6/12/2026 9:00	0.000	0.000	0.000	0.037
6/12/2026 9:01	0.000	0.000	0.000	0.037
6/12/2026 9:02	0.000	0.000	0.000	0.038
6/12/2026 9:03	0.000	0.000	0.000	0.039
6/12/2026 9:04	0.000	0.000	0.000	0.039
6/12/2026 9:05	0.000	0.000	0.000	0.040
6/12/2026 9:06	0.000	0.000	0.000	0.040
6/12/2026 9:07	0.000	0.000	0.000	0.041
6/12/2026 9:08	0.000	0.000	0.000	0.042
6/12/2026 9:09	0.000	0.000	0.000	0.042
6/12/2026 9:10	0.000	0.000	0.000	0.043
6/12/2026 9:11	0.000	0.000	0.000	0.043
6/12/2026 9:12	0.000	0.000	0.000	0.044
6/12/2026 9:13	0.000	0.000	0.000	0.045
6/12/2026 9:14	0.000	0.000	0.000	0.045
6/12/2026 9:15	-	0	0	0.046
6/12/2026 9:16	-	0	0	0.047
6/12/2026 9:17	-	0	0	0.047
6/12/2026 9:18	-	0	-	0.048
6/12/2026 9:19	-	0	-	0.048
6/12/2026 9:20	-	0	-	0.049