

# **250 Water Street and the New York State Department of Environmental Conservation Brownfield Cleanup Program**

## **Remedial Investigation Work Plan**

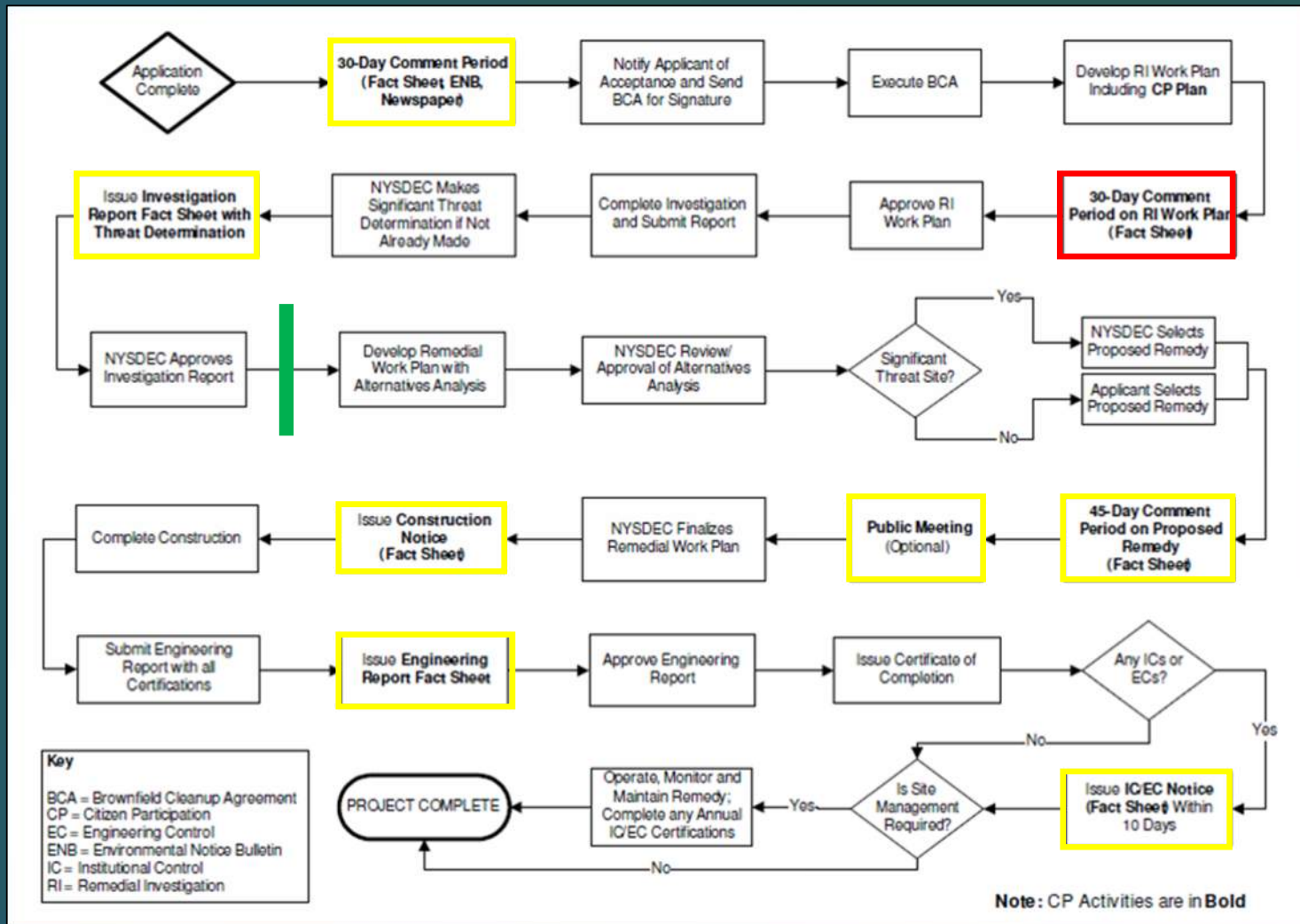
250 Water Street, New York, New York

NYSDEC BCP Site No. C231127

Community Board 1 – Environmental Protection Committee Meeting

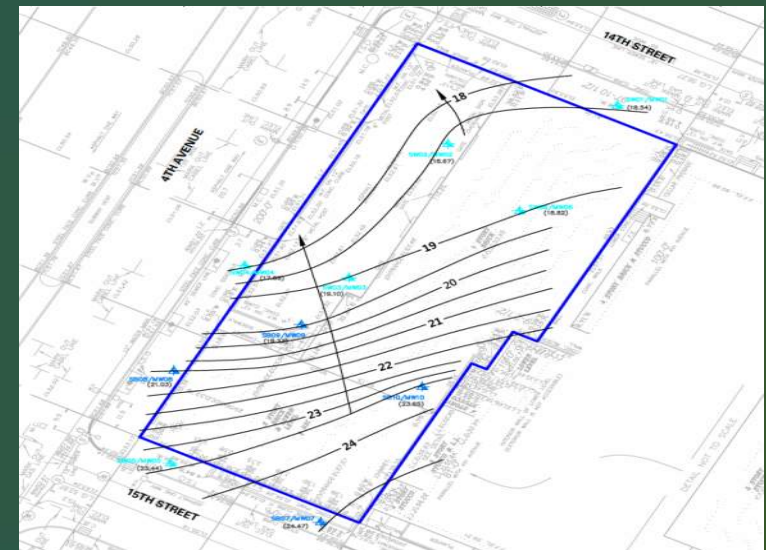
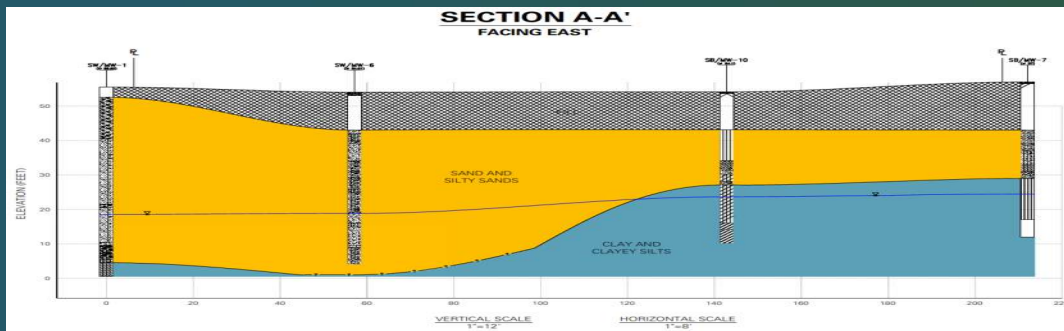
September 16, 2019

# BCP Process



# What is a Remedial Investigation?

- Investigate and characterize the nature and extent of conditions at a site
- Provide sufficient information to evaluate the potential for exposure and remedial alternatives



# Geophysical Survey

Ground Penetrating Radar



Utility Markout



# Soil Investigation



Soil Boring

Soil Sampling



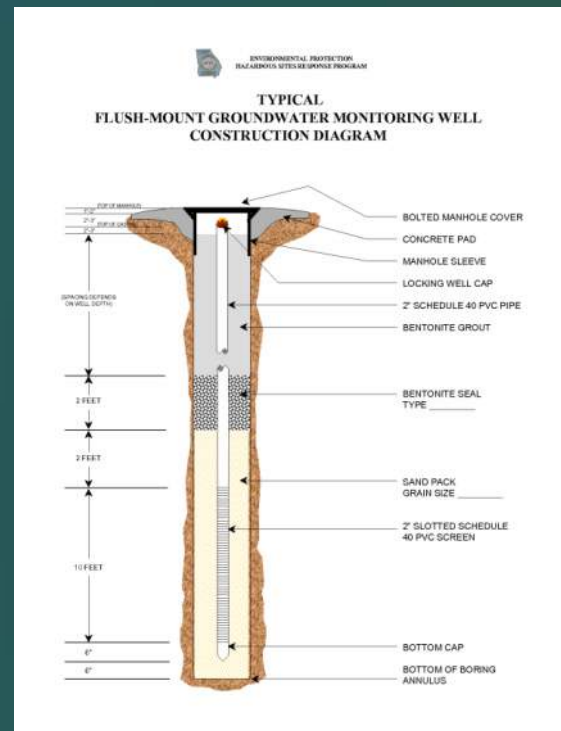
# Groundwater Investigation

SB31/MW31



## Monitoring Well

### Groundwater Gauging



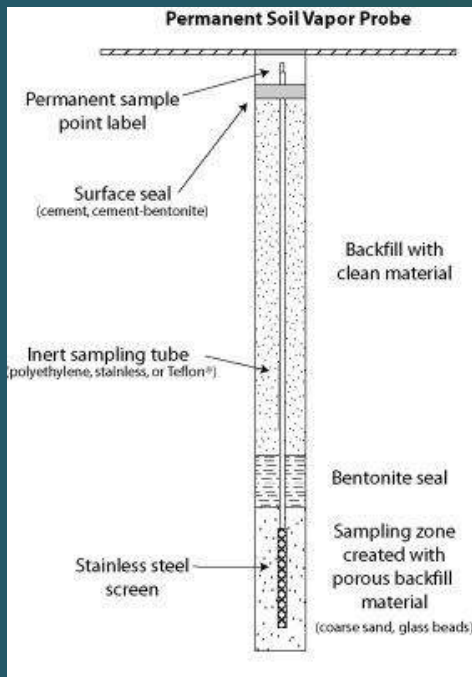
### Groundwater Sampling



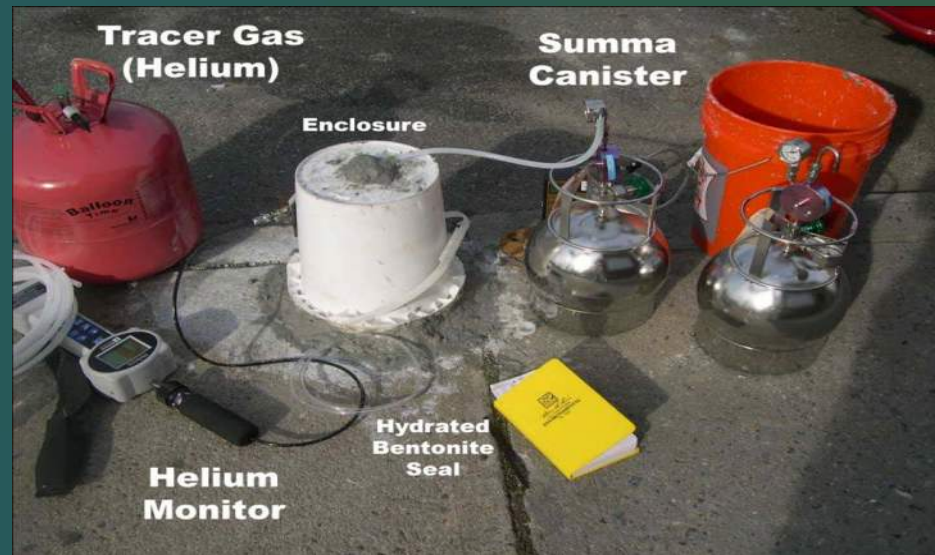
# Soil Vapor Investigation



## Soil Vapor Probe



## Soil Vapor Sampling



## Sorbent Tube



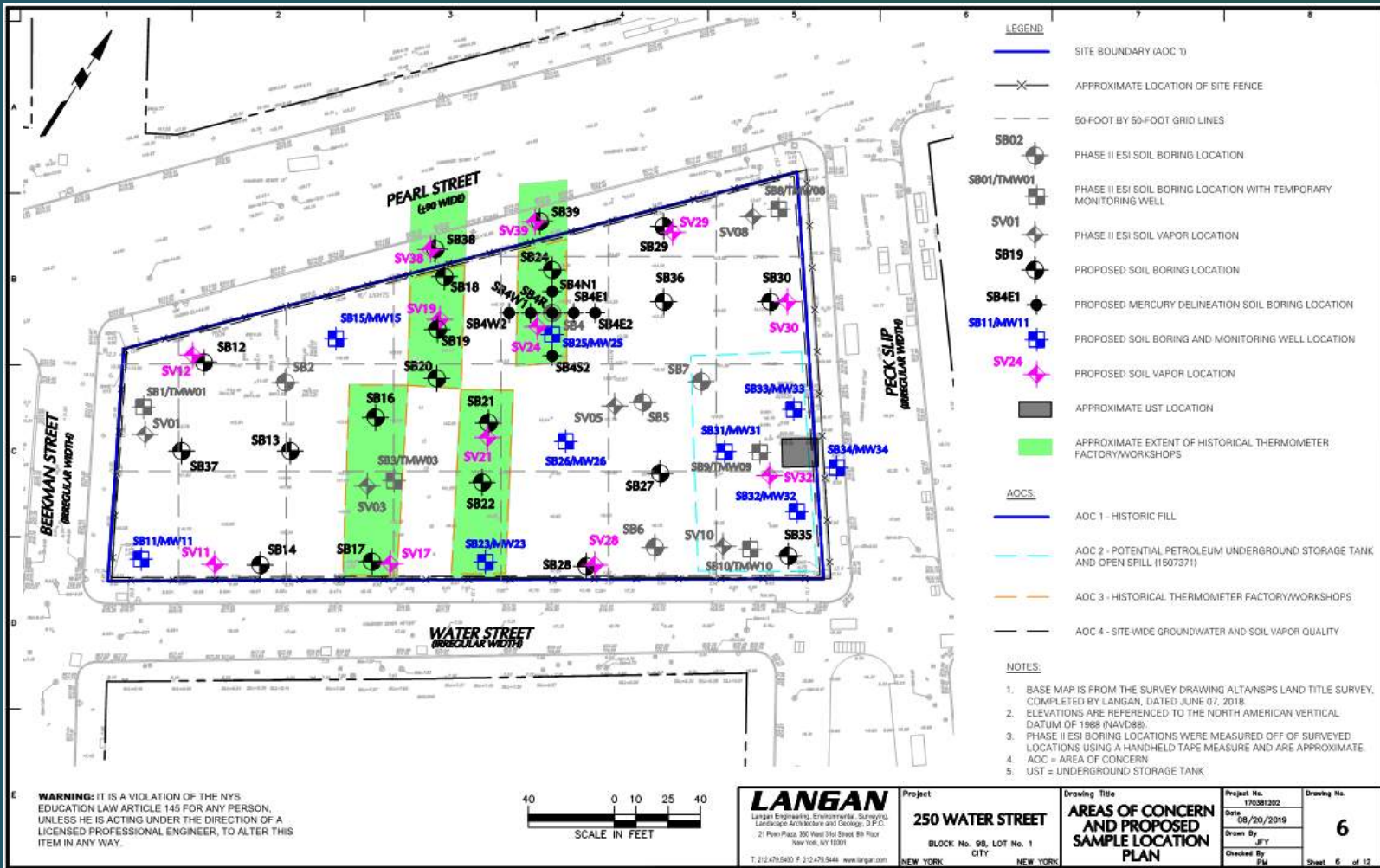
# Areas of Concern

Four Areas of Concern (AOCs) have been generated from Phase I and Phase II Investigations:

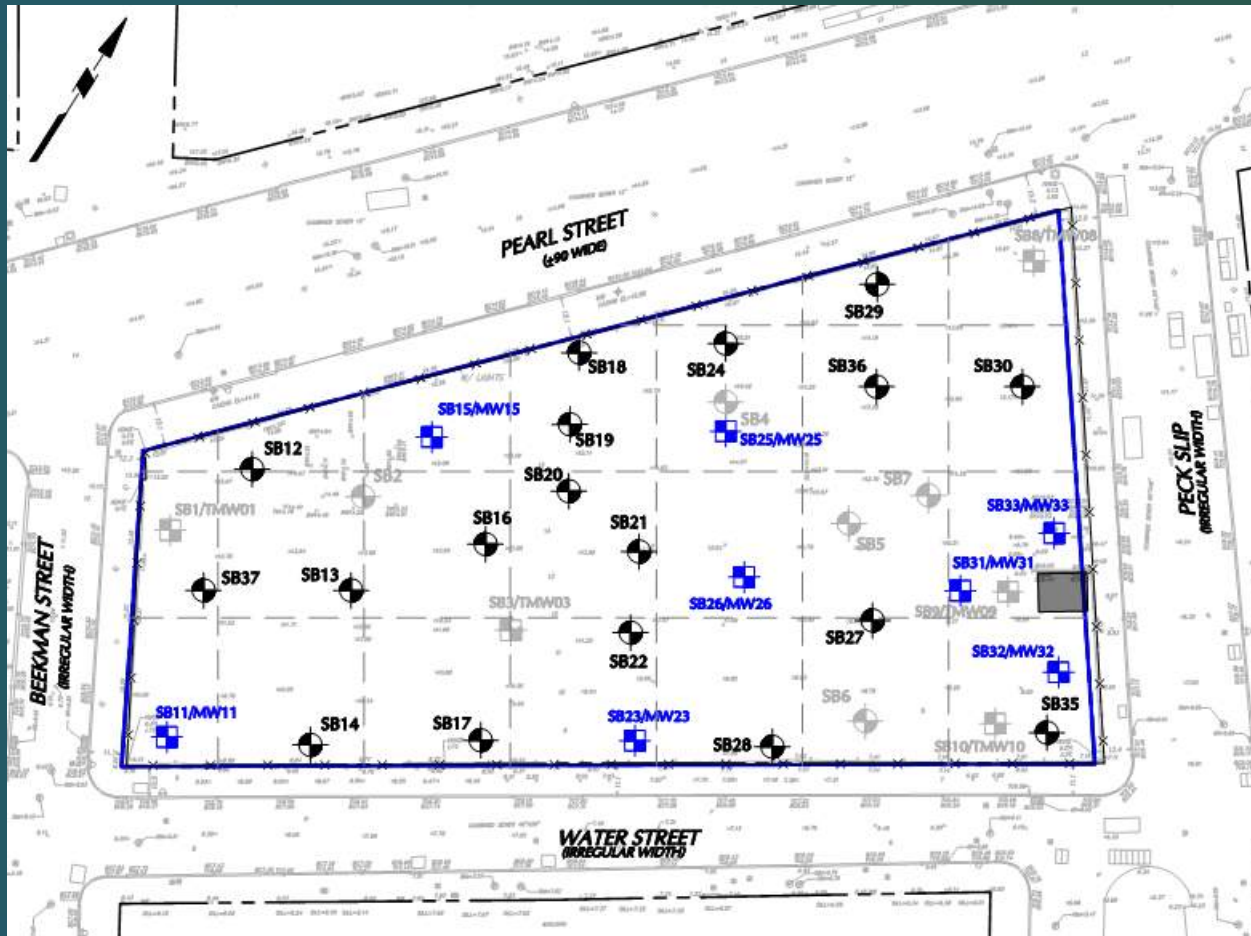
1. Historic Fill
2. Potential Petroleum Underground Storage Tank (UST) and Open Spill (Spill No. 1507371)
3. Historical Thermometer Factories/Workshops
4. Site-wide Groundwater and Soil Vapor Quality



# Areas of Concern and Boring Location Plan



# AOC-1 Historic Fill



# AOC-1 Historic Fill

SAMPLE SYMBOL	Sample Description	Depth Scale	Sample Data				Remarks (Drilling Fluid, Depth of Casing, Fluid Loss, Drilling Resistance, etc.)	
			Number	Type	Recovery (in)	Penetration Resist. (psi)		PID Reading (ppm)
R1	R1 (0-24") Loose, dark brown, medium SAND, some silt, trace fine gravel, concrete, coal, slag (moist) [FILL]	0	MACROCORE	24/36		0.0	7:40 Collect SB12_0-2	
		1					0.0	7:45 Collect SB12_0-1
		2					0.0	7:50 Collect SB12_1-2
		3					0.0	
		4					0.0	
R2	R2 (0-26") Loose, light brown, fine SAND, some silt, trace fine gravel, trace coarse gravel (moist) [SM]	5	MACROCORE	26/48		0.0		
		6					0.0	
		7					0.0	
R3	R3 (0-36") Loose, brown, fine SAND (moist) [SP]	8	MACROCORE	36/48		0.0		
		9					0.0	7:55 Collect SB12_9-10
		10					0.0	
R4a	R4a (0-10") Loose, brown, fine SAND (moist) [SP]	11	MACROCORE	46/48		0.0		
		12					0.0	
R4b	R4b (10-30") Loose, brown, silty fine SAND (moist) [SM]	13	MACROCORE	46/48		0.1		
		14					0.2	
R4c	R4c (30-46") Loose, brown, medium SAND, trace fine sand (moist) [SP]	15	MACROCORE	46/48		0.0		
		16					0.0	
R5a	R5a (0-10") Loose, brown, medium SAND, trace fine sand (moist) [SP]	17	MACROCORE	36/48		0.0		
		18					0.0	
R5b	R5b (10-36") Loose, brown, fine SAND, some silt (moist) [SM]	19	MACROCORE	36/48		0.0	8:00 Collect SB12_18-19	
		20					0.0	
R6a	R6a (0-42") Loose, brown, fine SAND, some medium sand (wet) [SP]	19	MACROCORE	48/48		0.0		
		20					0.0	

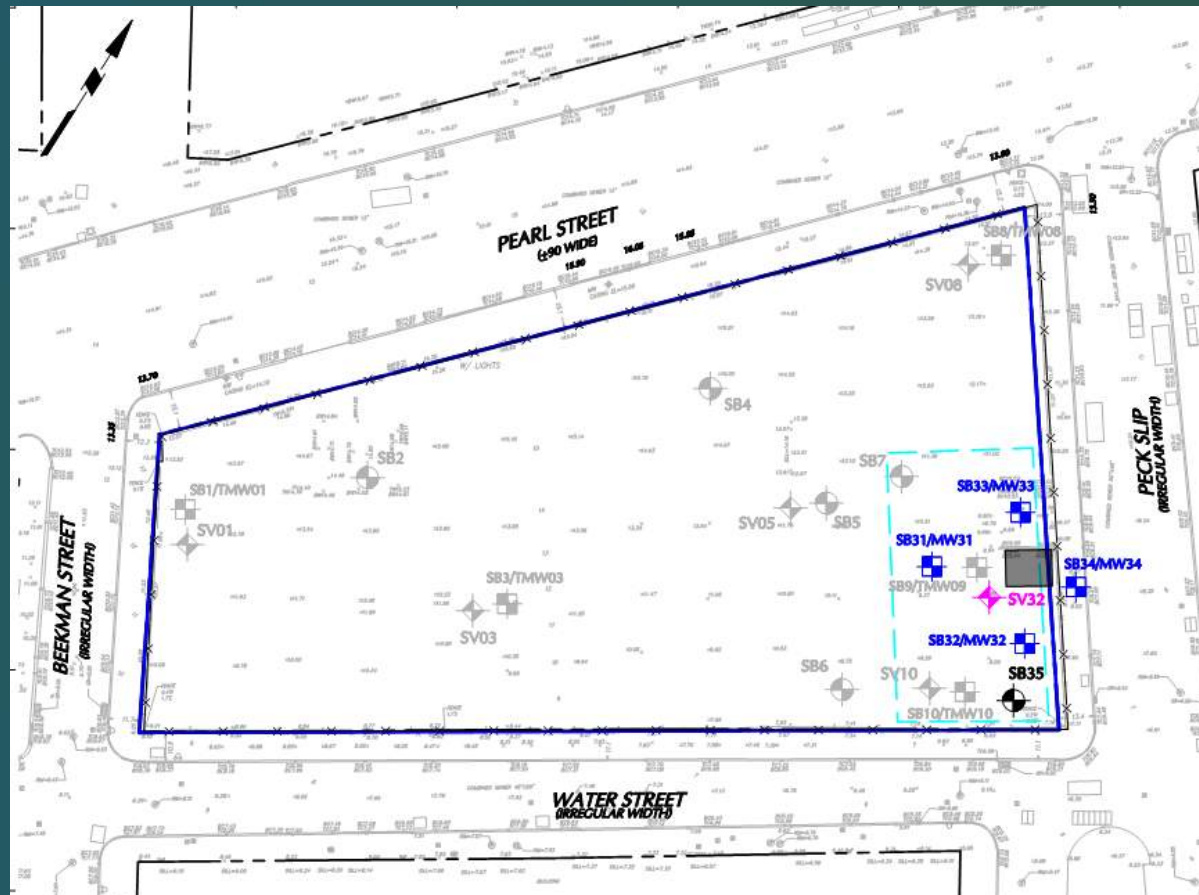


Historic Fill

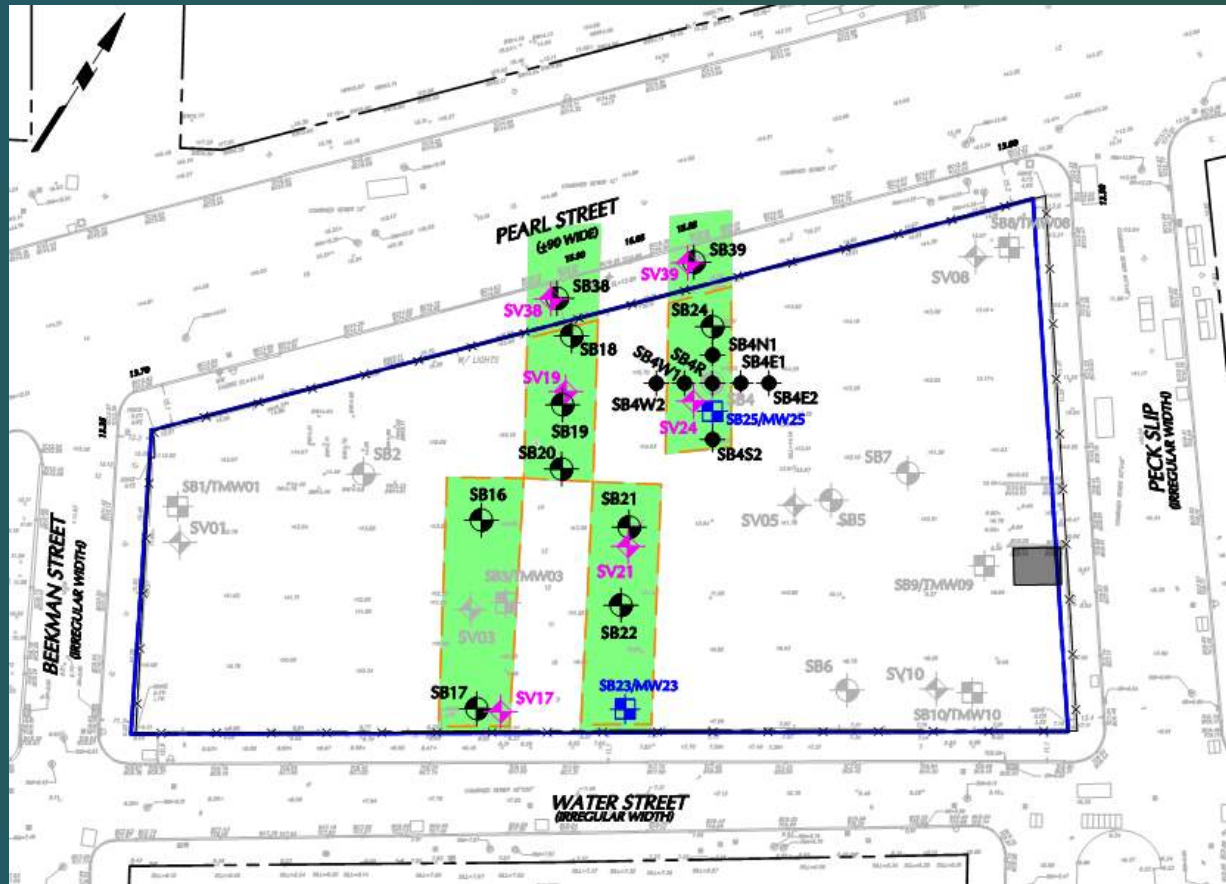


Native Soil

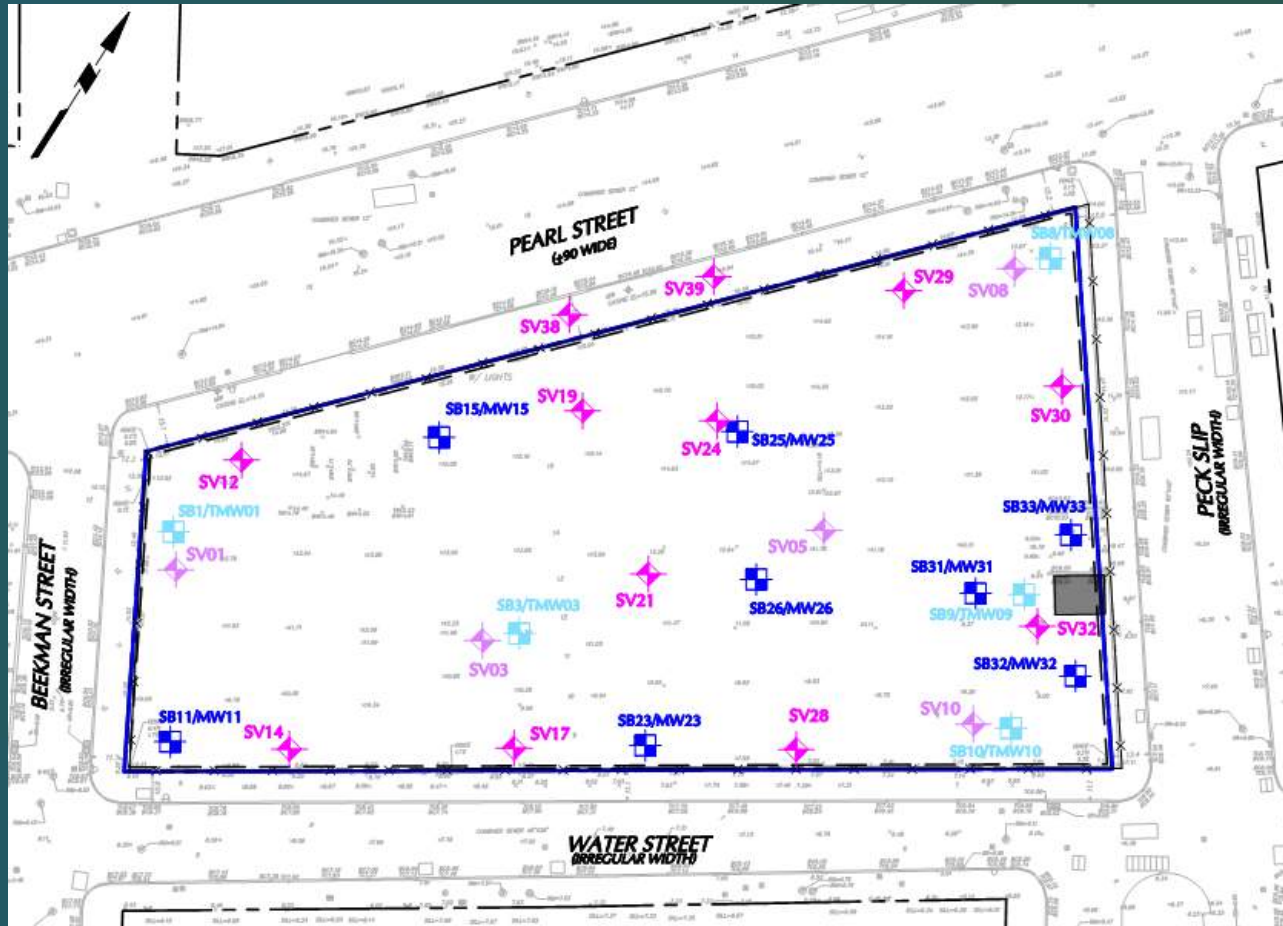
# AOC 2- Potential Petroleum UST and Spill



# AOC 3- Historical Thermometer Factories/Workshops



# AOC-4 Groundwater and Soil Vapor Quality

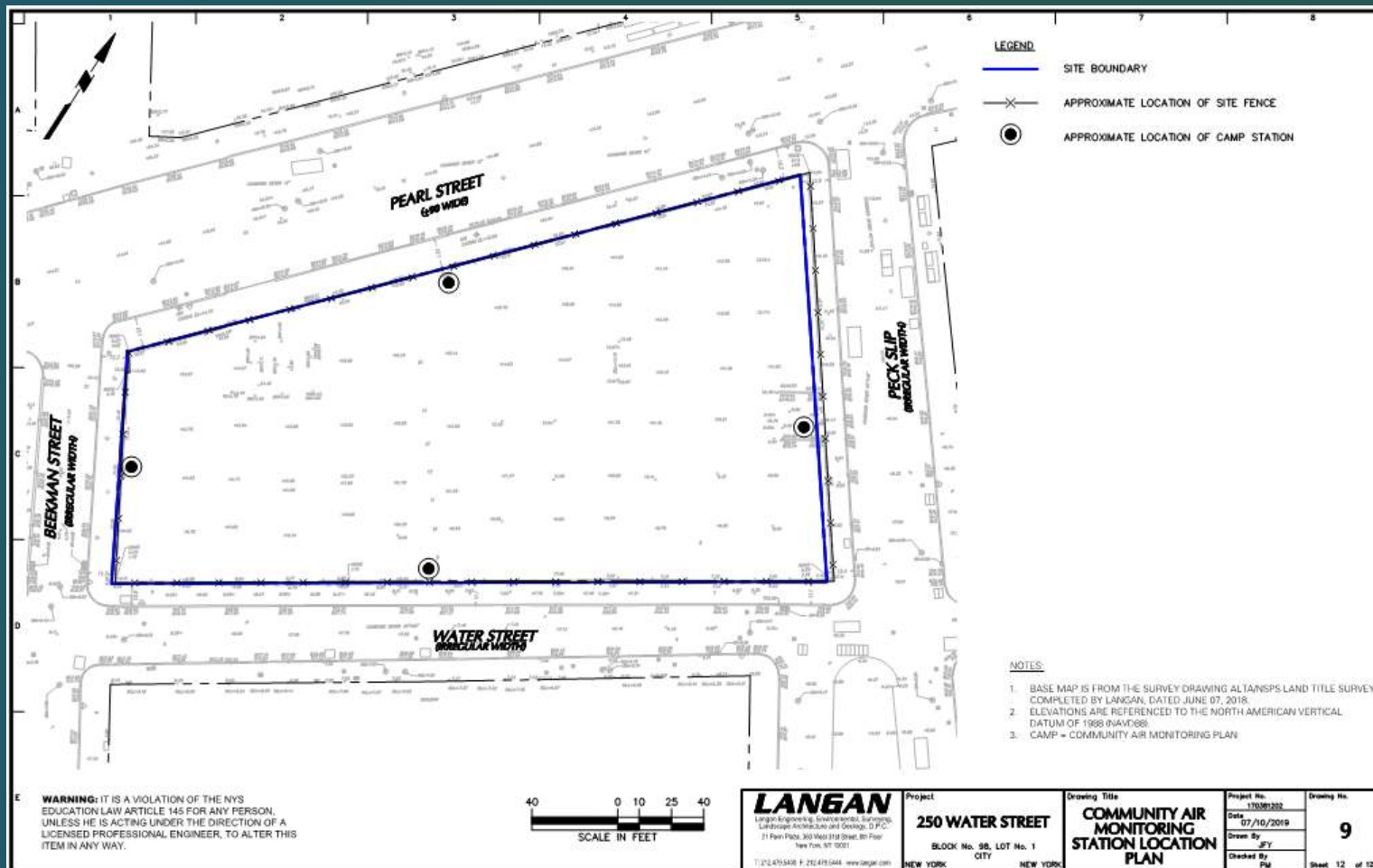


# Community Protection

- Community Air Monitoring Plan (CAMP)
  - Four CAMP stations
- Work Zone Air Monitoring
  - One downwind station
- Health and Safety Plan (HASP)



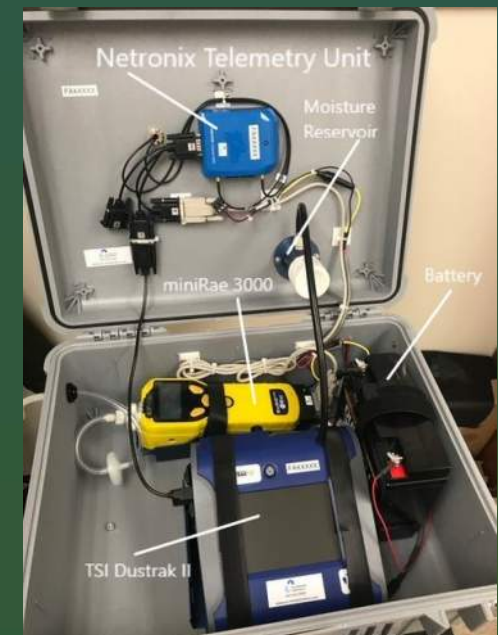
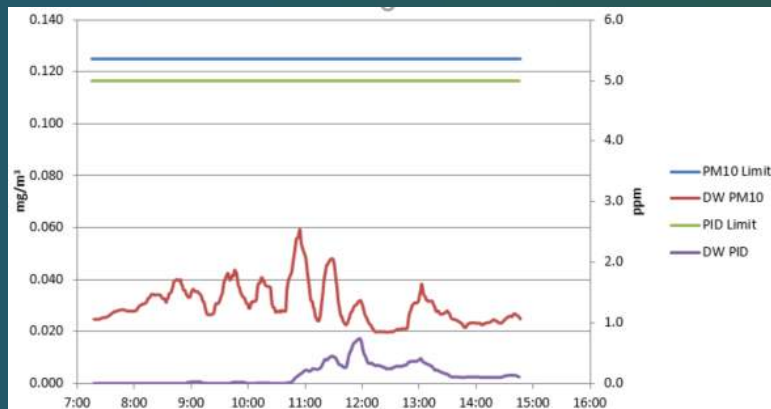
# CAMP Station Locations





# Community Air Monitoring Plan (CAMP)

- Protection of Public Health and the Environment
- Mercury Vapor Action Levels
  - Work Zone – 10 micrograms per cubic meter ( $\mu\text{g}/\text{m}^3$ )
  - CAMP – 3  $\mu\text{g}/\text{m}^3$



# Reporting

- Daily Field Reports and Monthly Progress Reports
  - Prepared and submitted to NYSDEC and NYSDOH
- CAMP results will be posted on a website
- Remedial Investigation Report
  - Summary of the nature and extent of contamination at each AOC
  - Submitted to the NYSDEC and NYSDOH

# Remedial Investigation Schedule

- BCP Remedial Investigation Public Comment Period
  - Commences September 23, 2019
- Remedial Investigation – about eighteen (18) eight-hour field days
  - Conducted outside of typical school hours
- Preparation and Submission of Remedial Investigation Report – about 12 to 16 weeks

# 250 Water Street BCP Schedule

## Site Remediation (2020 and beyond):

- Prepare a work plan for Remedial Action for NYSDEC/NYSDOH Review and Public Comment
- Implement the remedy

**Q & A**

**Thank you**