



GEOPHYSICAL INVESTIGATION REPORT

PERFORMED AT:

**460 West 41st Street
New York, NY 10036**

PREPARED FOR:

**Micgael Au
LANGAN Engineering
300 Kimball Drive, 4th Floor
Parsippany, NJ 07054-2172**

PREPARED BY:

**John Rango
Geophysical Technician
Enviroprobe Service, Inc.
1717 SE 1st Way, Unit 15
Deerfield Beach, FL 33441
Phone: (954) 414-1717
Toll Free: (800) 596-7472
Fax: (856) 439-5105**

February 10, 2021

1.0 INTRODUCTION

Enviroprobe Service, Inc. (Enviroprobe) is an environmental investigation services firm which provides monitoring well installation (HSA), Geoprobe (DPT) drilling services and Environmental & Engineering Geophysics (EEG) services to the environmental consulting and engineering community.

Enviroprobe conducted a subsurface geophysical investigation at the subject property within client-specified areas of concern. Due to conditions and objectives, the investigation utilized a GSSI UtilityScan cart-mounted ground penetrating radar (GPR) unit with a 350 MHz antenna, a Fisher TW-6 metallic locator, a Radiodetection multi-frequency transmitter, and a Radiodetection receiver.

Ground penetrating radar (commonly called GPR) is a geophysical method that has been developed over the past thirty years for shallow, high-resolution, subsurface investigations of the earth. GPR uses high frequency pulsed electromagnetic waves (generally 10 MHz to 2,000 MHz) to acquire subsurface information. An EM wave is propagated downward into the ground by a transmitting antenna. Where abrupt changes in electrical properties occur in the subsurface, a portion of the energy is reflected back to the surface. This reflected wave is detected by a receiver antenna and transmitted to a control unit for real time processing and display. The penetration depth of the GPR unit varies from several inches to tens of feet according to site-specific conditions. The penetration depth decreases with increased soil conductivity. The penetration depth is the greatest in ice, dry sands, and fine gravels. Clayey, highly saline or saturated soils, areas covered by concrete, foundry slag, or other highly conductive materials greatly reduce GPR penetration. GPR is a method that is commonly used for environmental, engineering, archaeological, and other shallow investigations.

The Fisher TW-6 metallic locator is designed to find pipes, cables and other metallic objects such as underground storage tanks (USTs). The TW-6 transmitter generates an electromagnetic field that induces electrical currents in the subsurface. These currents produce a secondary electromagnetic field that is measured by the TW-6 receiver. One surveyor can carry both the transmitter and receiver together to search for underground metallic objects, although the TW-6 response can also be affected by the electrical properties of non-metallic materials in the subsurface.

The Radiodetection (RD) transmitter and receiver are commonly used for pipe and cable locating. The multi-frequency transmitter can be directly connected, clamped, or used to induce a signal in a target line while the multi-frequency receiver is used to measure the signal from energized lines.

2.0 SCOPE OF WORK

On February 10, 2021, a geophysical technician from Enviroprobe Service Inc. was mobilized to the subject property to perform a geophysical investigation. The purpose of the investigation was to clear proposed boring locations and designate underground conduits/utilities in client-selected basement locations as well as two outside

locations adjacent to 10th Avenue. The ground surface of the survey area consisted of concrete and asphalt surfaces.

3.0 SURVEY RESULTS

The utility survey was conducted using a cart-mounted GPR unit and a RD unit. The RD unit was used to trace common utilities from sources in and around the survey area. The RD receiver was also used in the passive mode to search for live underground electrical power cables and other utilities emitting 60Hz electromagnetic signals. When possible, the location of utilities was confirmed with the GPR. The GPR survey was also performed in a grid pattern in at least two orthogonal directions to search for evident and non-evident underground utilities. Linear anomalies consistent with underground utilities were dotted on site with spray paint using the following colors: pink – unknown utilities. (See Figures 1 – 10)

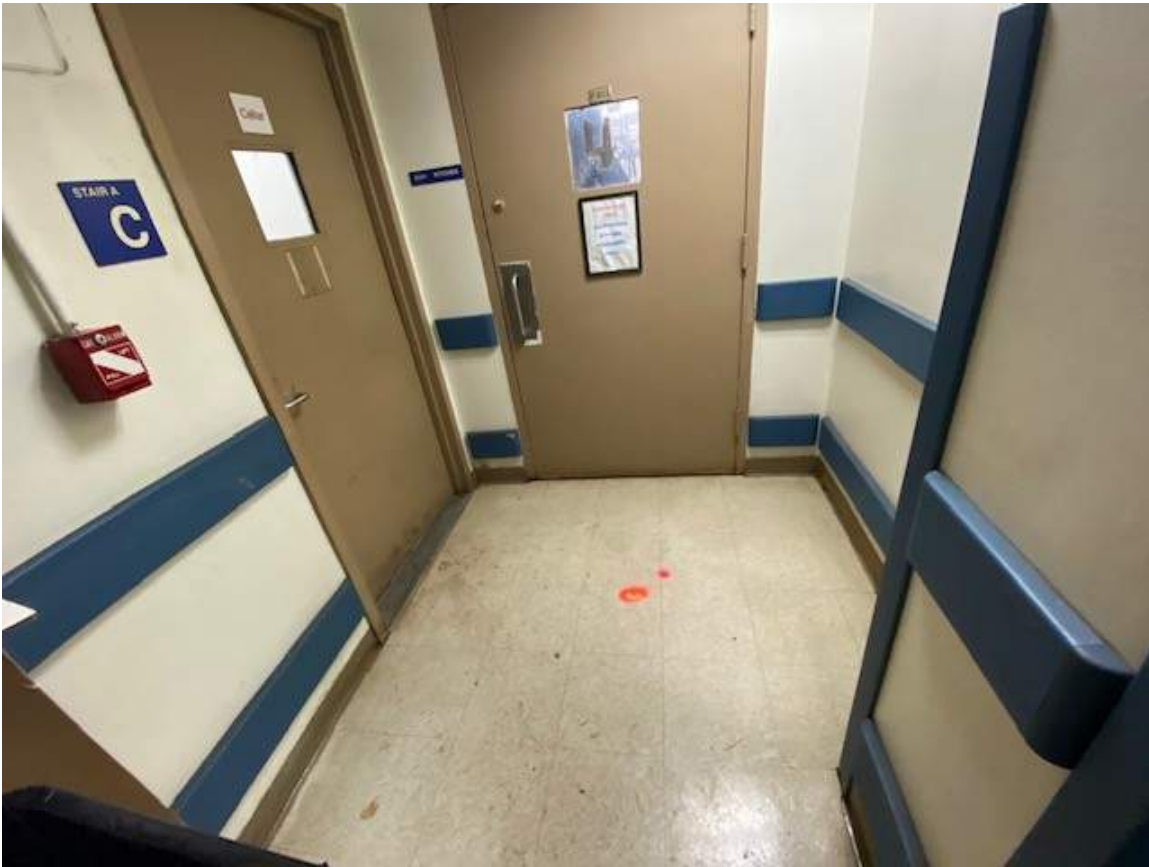


Figure 1: Proposed boring location.



Figure 2: Proposed boring location.



Figure 3: Proposed boring location.



Figure 4: Proposed boring location.



Figure 5: Proposed boring location.

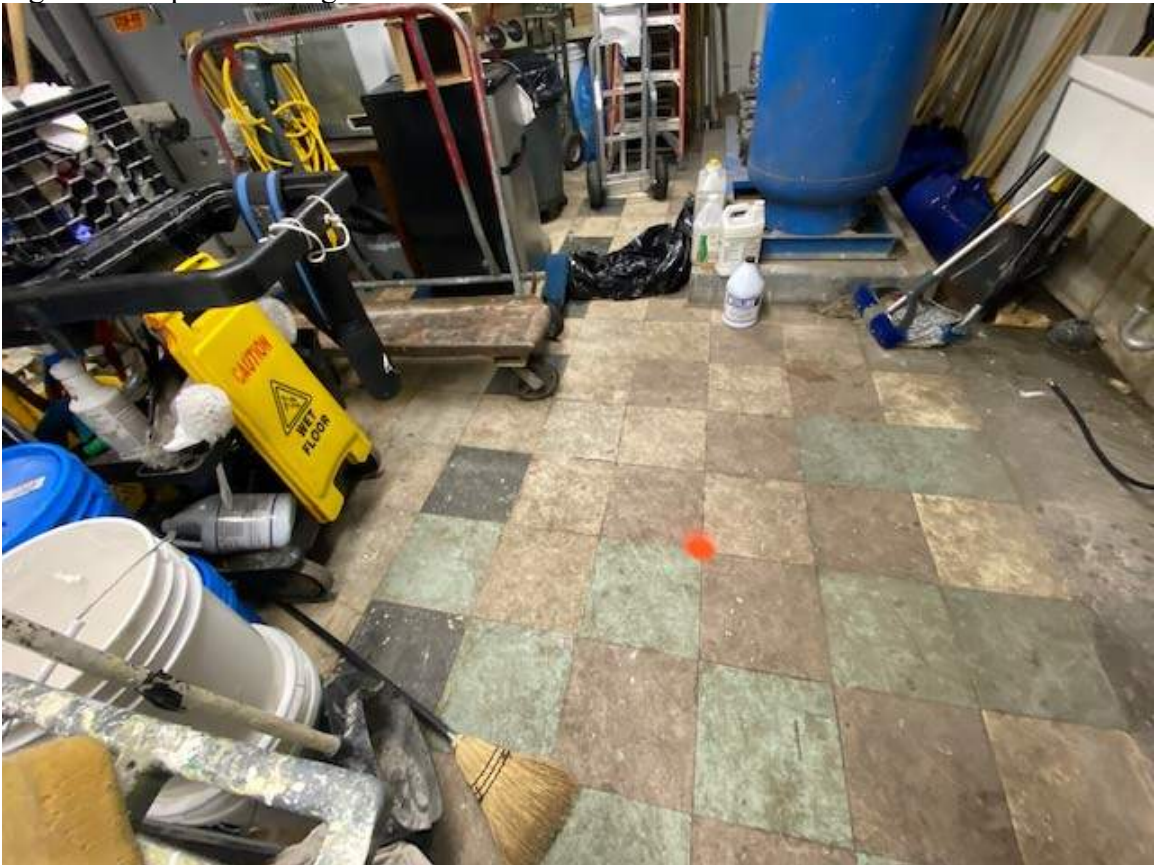


Figure 6: Proposed boring location.



Figure 7: Proposed boring location.

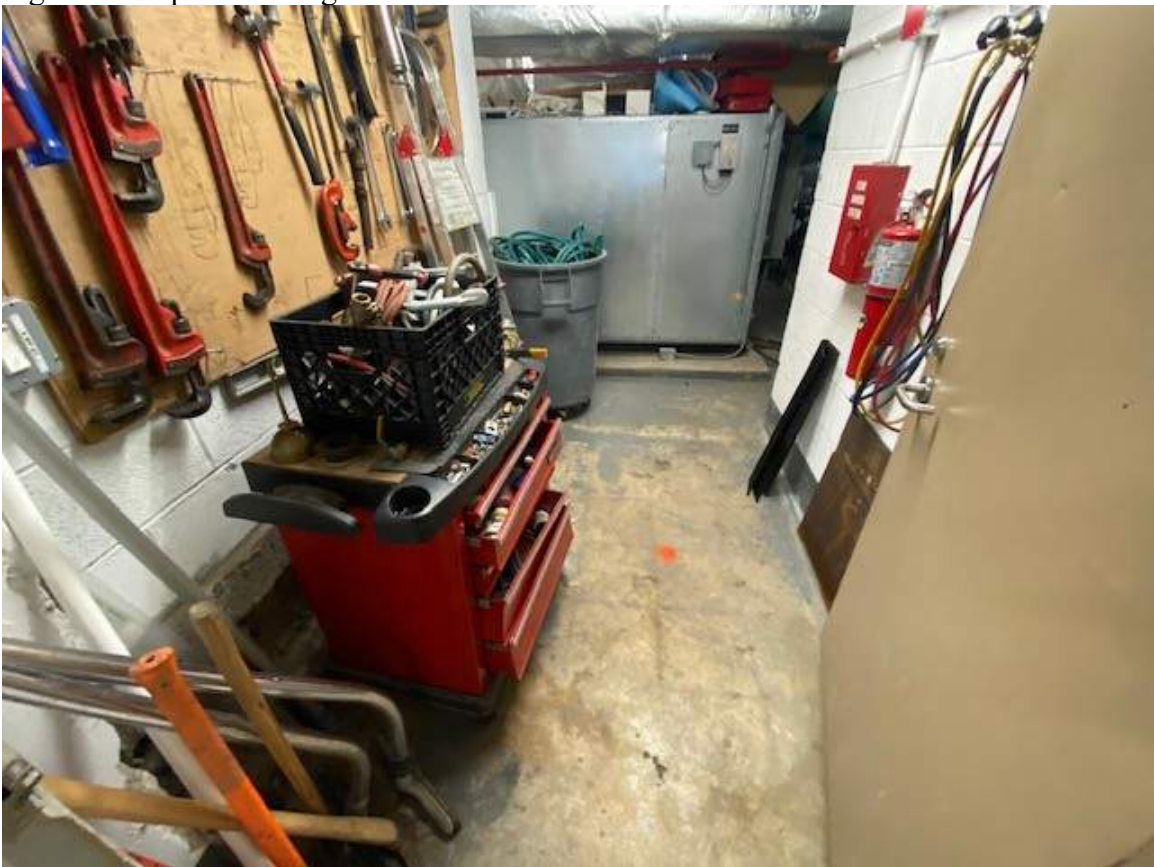


Figure 8: Proposed boring location.



Figure 9: Proposed boring location.

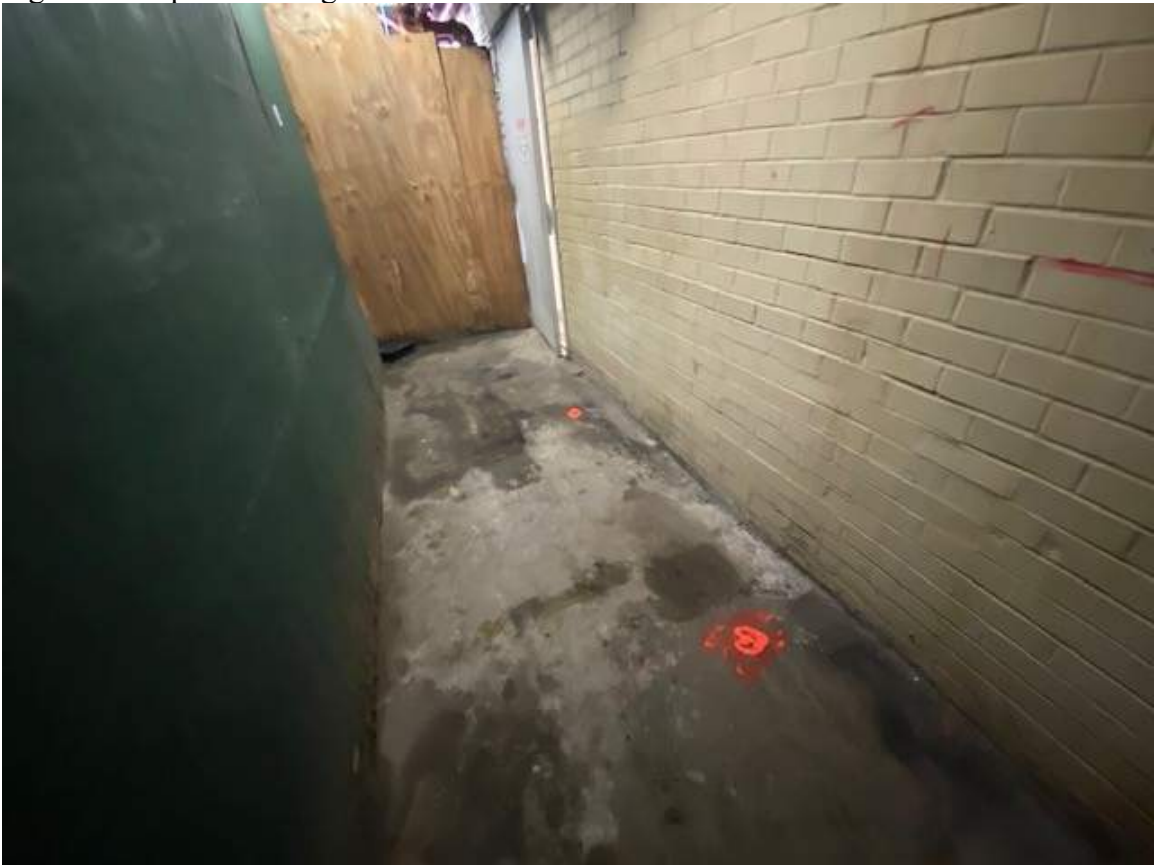


Figure 10: Proposed boring location.



Figure 11: Proposed boring location.

Client-directed proposed boring locations were investigated with the GPR and RD receiver. When possible, an area of approximately 10 ft by 10 ft surrounding each location was scanned. In some cases, obstructions prevented an investigation of the entire 10 ft by 10 ft area.

4.0 LIMITATIONS

Due to surface conditions and subsurface content, the GPR penetration depth was estimated at about 3 feet in the majority of the survey area.

Due to the dielectric properties of the subsurface, plastic polymer and fiberglass utilities may not have been detected.

The underground utility survey was conducted in compliance with the industry standard of care guidelines found in ASCE 38-02 (Level B).

5.0 WARRANTIES

The field observations and measurements reported herein are considered sufficient in detail and scope for this project. Enviroprobe Service, Inc. warrants that the findings and conclusions contained herein have been promulgated in accordance with generally accepted environmental engineering methods. There is a possibility that conditions may

Enviroprobe Service, Inc.

exist which could not be identified within the scope of this project and were not apparent during the site activities performed for this project.

Enviroprobe represents that the services were performed in a manner consistent with that level of care and skill ordinarily exercised by environmental consultants under similar circumstances. No other representations to Client, express or implied, and no warranty or guarantee is included or intended in this agreement, or in any report, document, or otherwise.

Enviroprobe Service, Inc. believes that the information provided in this report is reliable. However, Enviroprobe cannot warrant or guarantee that the information provided by others is complete or accurate. No other warranties or guarantees are implied or expressed.

GPR data is subject to signal anomalies and operator interpretation. The GPR data is intended to provide the locations of areas of concern requiring additional investigation or the approximate location of underground structures and utilities. Great care must be utilized when excavating and/or drilling around underground structures and utilities since GPR data can only be used for estimation purposes and GPR data is subject to misinterpretation. Enviroprobe cannot guarantee that utilities, post-tension cables, and/or rebar will not be incurred during drilling, cutting, coring, or excavating activities.

This report was prepared pursuant to the contract Enviroprobe has with the Client. That contractual relationship included an exchange of information about the property that was unique and between Enviroprobe and its client and serves as the basis upon which this report was prepared. Because of the importance of the communication between Enviroprobe and its client, reliance or any use of this report by anyone other than the Client, for whom it was prepared, is prohibited and therefore not foreseeable to Enviroprobe.

Reliance or use by any such third party without explicit authorization in the report does not make said third party a third-party beneficiary to Enviroprobe contract with the Client. Any such unauthorized reliance on or use of this report, including any of its information or conclusions, will be at the third party's risk. For the same reasons, no warranties or representations, expressed or implied in this report, are made to any such third party.