

Monitoring Well and Recovery Well  
Boring and Construction Logs



ROUX ASSOCIATES, INC.  
Environmental Consulting  
& Management

209 Shafter Street  
Islandia, NY 11749  
Telephone: (631) 232-2600  
Fax: (631) 232-9898

Page 1 of 1

## WELL CONSTRUCTION LOG

WELL NO. <b>MW-40</b>	NORTHING <b>Not Measured</b>	EASTING <b>Not Measured</b>
PROJECT NO./NAME <b>2051.0001Y000 / Former Paragon Paint &amp; Varnish</b>	LOCATION <b>5-49 46th Avenue Long Island City, New York</b>	
APPROVED BY	LOGGED BY <b>R. Henke</b>	
DRILLING CONTRACTOR/DRILLER <b>Zebra Environmental / Evan M</b>	GEOGRAPHIC AREA <b>Queens County</b>	
DRILL BIT DIAMETER/TYPE <b>3-in. / Drive Sampler</b>	BOREHOLE DIAMETER <b>3-inches</b>	DRILLING EQUIPMENT/METHOD <b>7822 DT- Air Rotary / Geoprobe</b>
CASING MAT./DIA. <b>PVC / 2-inch</b>	SCREEN: <b>TYPE Slotted</b>	SAMPLING METHOD <b>2" Macro-Core</b>
ELEVATION OF: (Feet)	GROUND SURFACE	START-FINISH DATE <b>1/11/16-1/11/16</b>
	TOP OF WELL CASING	GRAVEL PACK SIZES <b>More #2</b>
	TOP & BOTTOM SCREEN <b>/</b>	
	TOTAL LENGTH <b>15.0ft</b>	
	DIA. <b>2-inch</b>	
	SLOT SIZE <b>20-Slot</b>	

Depth, feet	Graphic Log	Visual Description	Blow Counts per 6"	PID Values (ppm)	REMARKS
		<p>Recycled concrete aggregate (fill); dry.</p> <p>Brown, fine to medium SAND, some Silt, little Cobbles, trace brick (fill); dry.</p> <p>Brown, fine to medium SAND, some coarse Gravel, trace silt; wet.</p> <p>Light tan, fine SAND, some coarse Gravel; moist.</p> <p>Dark brown; fine to coarse SAND, little medium to coarse Gravel; trace fine cobble; wet.</p> <p>Dark brown; fine SAND, some Silt; moist.</p> <p>Dark brown, fine SAND, some Silt, little fine to medium Gravel; wet.</p> <p>Light brown, fine to medium SAND, some Silt, some fine to medium Gravel; moist.</p> <p>BEDROCK.</p>			
5			88.3		
10			436.8		Apparent odor. Soil sample GT-5C-W-B/9-11 collected and analyzed for TCL VOCs, TCL SVOCs and TAL Metals.
15			754.3		
			625.1		
			139.8		Soil sample GT-5C-W-B/15-16 collected and analyzed for TCL VOCs, TCL SVOCs and TAL Metals.
			90.2		
			59.1		
20					End of boring at 19 ft bls.

BORING/FEET 2051.0001Y144.GPJ ROUX.GDT 6/21/16



ROUX ASSOCIATES, INC.  
Environmental Consulting  
& Management

209 Shafter Street  
Islandia, NY 11749  
Telephone: (631) 232-2600  
Fax: (631) 232-9898

Page 1 of 1

## WELL CONSTRUCTION LOG

WELL NO. <b>MW-41</b>	NORTHING <b>Not Measured</b>	EASTING <b>Not Measured</b>
PROJECT NO./NAME <b>2051.0001Y000 / Former Paragon Paint &amp; Varnish</b>		LOCATION <b>5-49 46th Avenue</b>
APPROVED BY	LOGGED BY <b>R. Henke</b>	<b>Long Island City, New York</b>
DRILLING CONTRACTOR/DRILLER <b>Zebra Environmental / Evan M</b>		GEOGRAPHIC AREA <b>Queens County</b>
DRILL BIT DIAMETER/TYPE <b>3-in. / Drive Sampler</b>	BOREHOLE DIAMETER <b>3-inches</b>	DRILLING EQUIPMENT/METHOD <b>7822 DT- Air Rotary / Geoprobe</b>
CASING MAT./DIA. <b>PVC / 2-inch</b>	SCREEN: <b>TYPE Slotted</b>	SAMPLING METHOD <b>2" Macro-Core</b>
ELEVATION OF: (Feet)	GROUND SURFACE	START-FINISH DATE <b>1/12/16-1/12/16</b>
	TOP OF WELL CASING	
	TOP & BOTTOM SCREEN <b>/</b>	GRAVEL PACK SIZES <b>More #2</b>

Depth, feet	Graphic Log	Visual Description	Blow Counts per 6"	PID Values (ppm)	REMARKS
		<p>Recycled concrete aggregate (fill); dry.</p> <p>Brown, fine to medium SAND, some Silt, little Cobbles; dry.</p> <p>CONCRETE.</p> <p>Dark brown, fine to coarse SAND, some medium to coarse Gravel; moist.</p> <p>CONCRETE.</p> <p>Brown, fine to medium SAND, some Silt, trace fine gravel; wet.</p> <p>Weathered BEDROCK.</p>			<p>Apparent odor.</p> <p>Soil sample GT-4A-E-B/16-17 collected and analyzed for TCL VOCs, TCL SVOCs and TAL Metals. End of boring at 17 ft bls.</p>
5					5
10					10
15					15

BORING/FEET 2051.0001Y144.GPJ ROUX.GDT 6/21/16



ROUX ASSOCIATES, INC.  
Environmental Consulting  
& Management

209 Shafter Street  
Islandia, NY 11749  
Telephone: (631) 232-2600  
Fax: (631) 232-9898

Page 1 of 1

## WELL CONSTRUCTION LOG

WELL NO. <b>MW-42</b>	NORTHING <b>Not Measured</b>	EASTING <b>Not Measured</b>
PROJECT NO./NAME <b>2051.0001Y000 / Former Paragon Paint &amp; Varnish</b>		LOCATION <b>5-49 46th Avenue</b>
APPROVED BY	LOGGED BY <b>R. Henke</b>	<b>Long Island City, New York</b>
DRILLING CONTRACTOR/DRILLER <b>Zebra Environmental / Evan M</b>		GEOGRAPHIC AREA <b>Queens County</b>
DRILL BIT DIAMETER/TYPE <b>3-in. / Drive Sampler</b>	BOREHOLE DIAMETER <b>3-inches</b>	DRILLING EQUIPMENT/METHOD <b>7822 DT- Air Rotary / Geoprobe</b>
CASING MAT./DIA. <b>PVC / 2-inch</b>	SCREEN: <b>TYPE Slotted</b>	SAMPLING METHOD <b>2" Macro-Core</b>
ELEVATION OF: (Feet)	GROUND SURFACE	START-FINISH DATE <b>1/12/16-1/12/16</b>
TOP OF WELL CASING		GRAVEL PACK SIZES <b>More #2</b>
TOTAL LENGTH <b>6.0</b> ft		
DIA. <b>2-inch</b>		
SLOT SIZE <b>20-Slot</b>		
TOP & BOTTOM SCREEN <b>/</b>		

Depth, feet	Graphic Log	Visual Description	Blow Counts per 6"	PID Values (ppm)	REMARKS
0		Recycled concrete aggregate (fill); dry.			
1	Concrete				
2	Bentonite				
3	4 feet of 4" diameter, schedule 40 PVC riser	Light brown, fine to medium SAND, some fine to medium Gravel, trace silt; dry.			
5	#2 Sand	Brown, fine SAND, some Silt; moist.			
7	7 feet of 4" diameter, 20-slot screen	Dark brown, fine SAND, some Silt; wet.			Apparent odor.
10	Well Plug	CONCRETE.			
15					
		Weathered BEDROCK.			

BORING/FEET 2051.0001Y144.GPJ ROUX.GDT 6/21/16



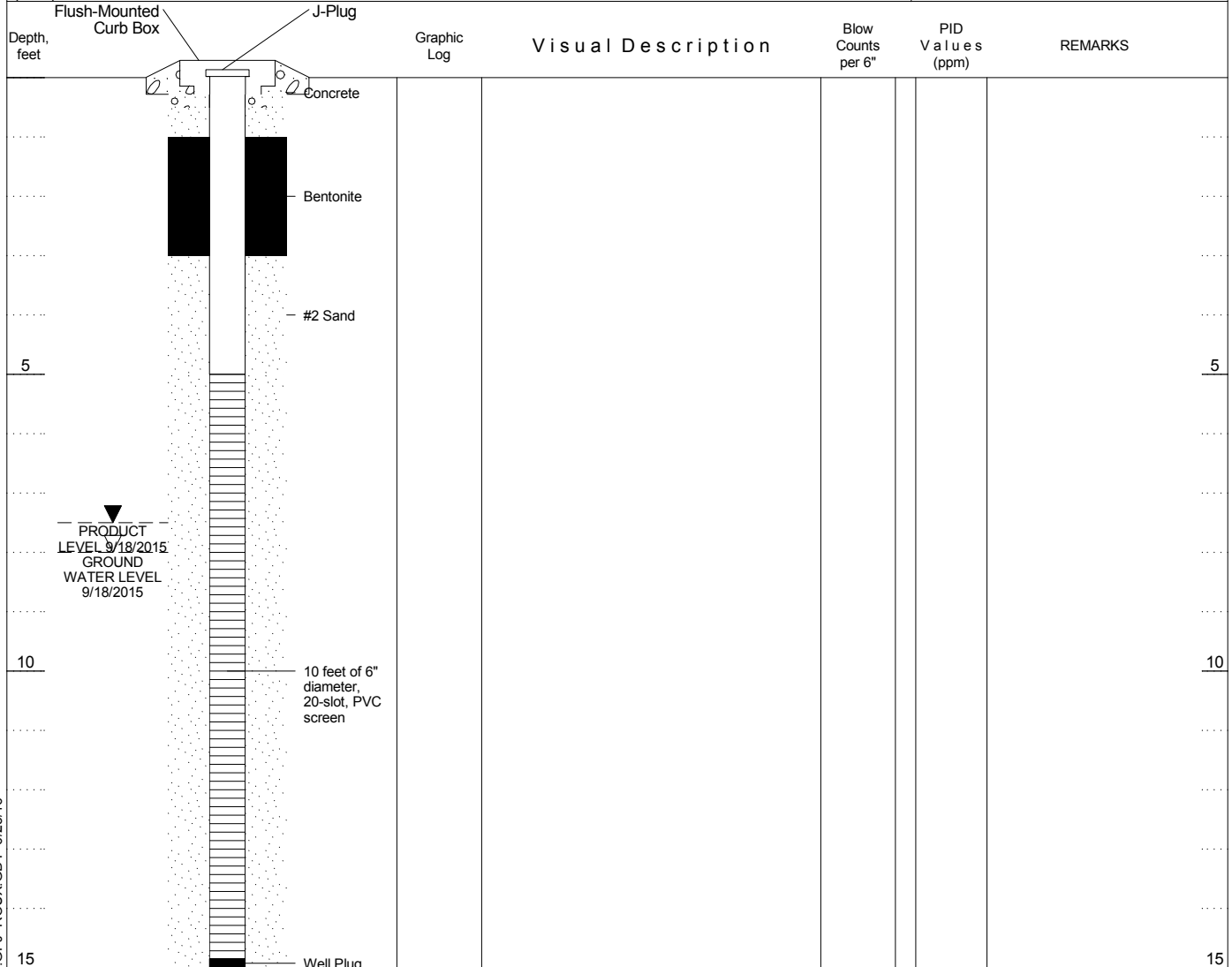
ROUX ASSOCIATES, INC.  
Environmental Consulting  
& Management

209 Shafter Street  
Islandia, NY 11749  
Telephone: (631) 232-2600  
Fax: (631) 232-9898

Page 1 of 1

## WELL CONSTRUCTION LOG

WELL NO. <b>RW-01</b>	NORTHING <b>Not Measured</b>	EASTING <b>Not Measured</b>
PROJECT NO./NAME <b>2051.0001Y000 / Former Paragon Paint &amp; Varnish</b>		LOCATION <b>5-49 46th Avenue</b>
APPROVED BY	LOGGED BY	<b>Long Island City, New York</b>
DRILLING CONTRACTOR/DRILLER <b>/</b>		GEOGRAPHIC AREA
DRILL BIT DIAMETER/TYPE <b>/</b>	BOREHOLE DIAMETER	DRILLING EQUIPMENT/METHOD <b>/</b>
CASING MAT./DIA. <b>PVC / 6-inch</b>		SAMPLING METHOD
SCREEN: TYPE <b>Slotted</b> MAT. <b>PVC</b>		START-FINISH DATE <b>-</b>
TOTAL LENGTH <b>10.0ft</b> DIA. <b>6-inch</b> SLOT SIZE <b>20-Slot</b>		
ELEVATION OF: (Feet)	GROUND SURFACE <b>0.00</b>	TOP OF WELL CASING <b>/</b>
TOP & BOTTOM SCREEN		GRAVEL PACK SIZES <b>Morie #2</b>



BORING/FEET 2051.0001Y000\_ONLYWELLS.GPJ ROUX.GDT 6/23/16



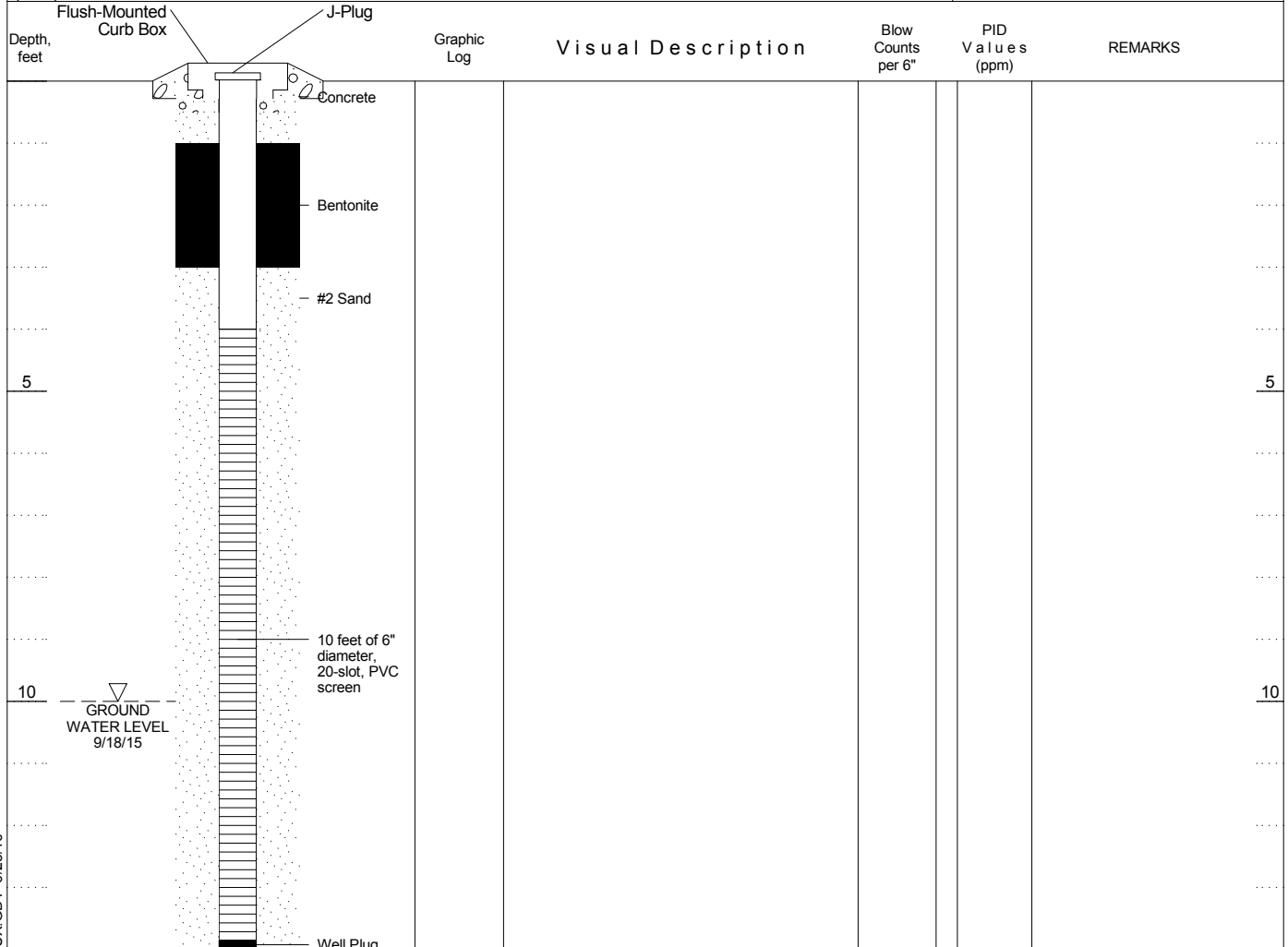
ROUX ASSOCIATES, INC.  
Environmental Consulting  
& Management

209 Shafter Street  
Islandia, NY 11749  
Telephone: (631) 232-2600  
Fax: (631) 232-9898

Page 1 of 1

## WELL CONSTRUCTION LOG

WELL NO. <b>RW-02</b>	NORTHING <b>Not Measured</b>	EASTING <b>Not Measured</b>			
PROJECT NO./NAME <b>2051.0001Y000 / Former Paragon Paint &amp; Varnish</b>		LOCATION <b>5-49 46th Avenue</b>			
APPROVED BY	LOGGED BY	<b>Long Island City, New York</b>			
DRILLING CONTRACTOR/DRILLER <b>/</b>		GEOGRAPHIC AREA			
DRILL BIT DIAMETER/TYPE <b>/</b>	BOREHOLE DIAMETER	DRILLING EQUIPMENT/METHOD <b>/</b>	SAMPLING METHOD	START-FINISH DATE <b>-</b>	
CASING MAT./DIA. <b>PVC / 6-inch</b>	SCREEN: TYPE <b>Slotted</b>	MAT. <b>PVC</b>	TOTAL LENGTH <b>10.0ft</b>	DIA. <b>6-inch</b>	SLOT SIZE <b>20-Slot</b>
ELEVATION OF: (Feet)	GROUND SURFACE	TOP OF WELL CASING <b>0.00</b>	TOP & BOTTOM SCREEN <b>/</b>	GRAVEL PACK SIZES <b>Morie #2</b>	



BORING/FEET 2051.0001Y000\_ONLYWELLS.GPJ ROUX.GDT 6/23/16



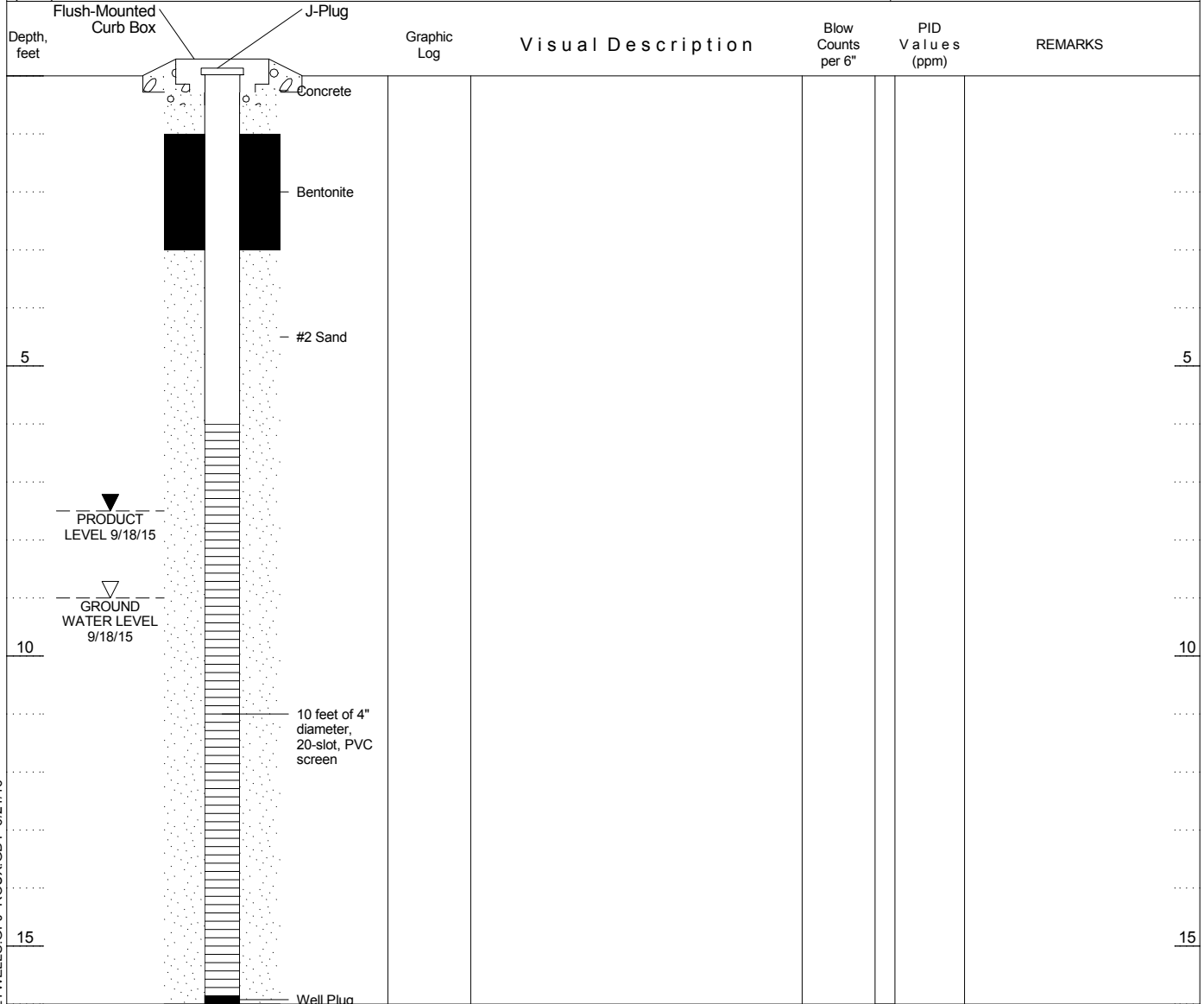
ROUX ASSOCIATES, INC.  
Environmental Consulting  
& Management

209 Shafter Street  
Islandia, NY 11749  
Telephone: (631) 232-2600  
Fax: (631) 232-9898

Page 1 of 1

## WELL CONSTRUCTION LOG

WELL NO. <b>RW-03</b>	NORTHING <b>Not Measured</b>	EASTING <b>Not Measured</b>
PROJECT NO./NAME <b>2051.0001Y000 / Former Paragon Paint &amp; Varnish</b>		LOCATION <b>5-49 46th Avenue Long Island City, New York</b>
APPROVED BY	LOGGED BY <b>R. Henke</b>	GEOGRAPHIC AREA
DRILLING CONTRACTOR/DRILLER <b>Zebra / Carlos</b>		
DRILL BIT DIAMETER/TYPE <b>/</b>	BOREHOLE DIAMETER <b>6-inches</b>	DRILLING EQUIPMENT/METHOD <b>/ Geoprobe</b>
CASING MAT./DIA. <b>PVC / 6-inch</b>	SCREEN: TYPE <b>Slotted</b> MAT. <b>PVC</b>	TOTAL LENGTH <b>10.0ft</b> DIA. <b>6-inch</b> SLOT SIZE <b>20-Slot</b>
ELEVATION OF: (Feet)	GROUND SURFACE <b>0.00</b>	TOP OF WELL CASING <b>/</b>
	TOP & BOTTOM SCREEN <b>/</b>	GRAVEL PACK SIZES <b>More #2</b>



BORING/FEET 2051.0001Y000\_ONLYWELLS.GPJ ROUX.GDT 6/21/16



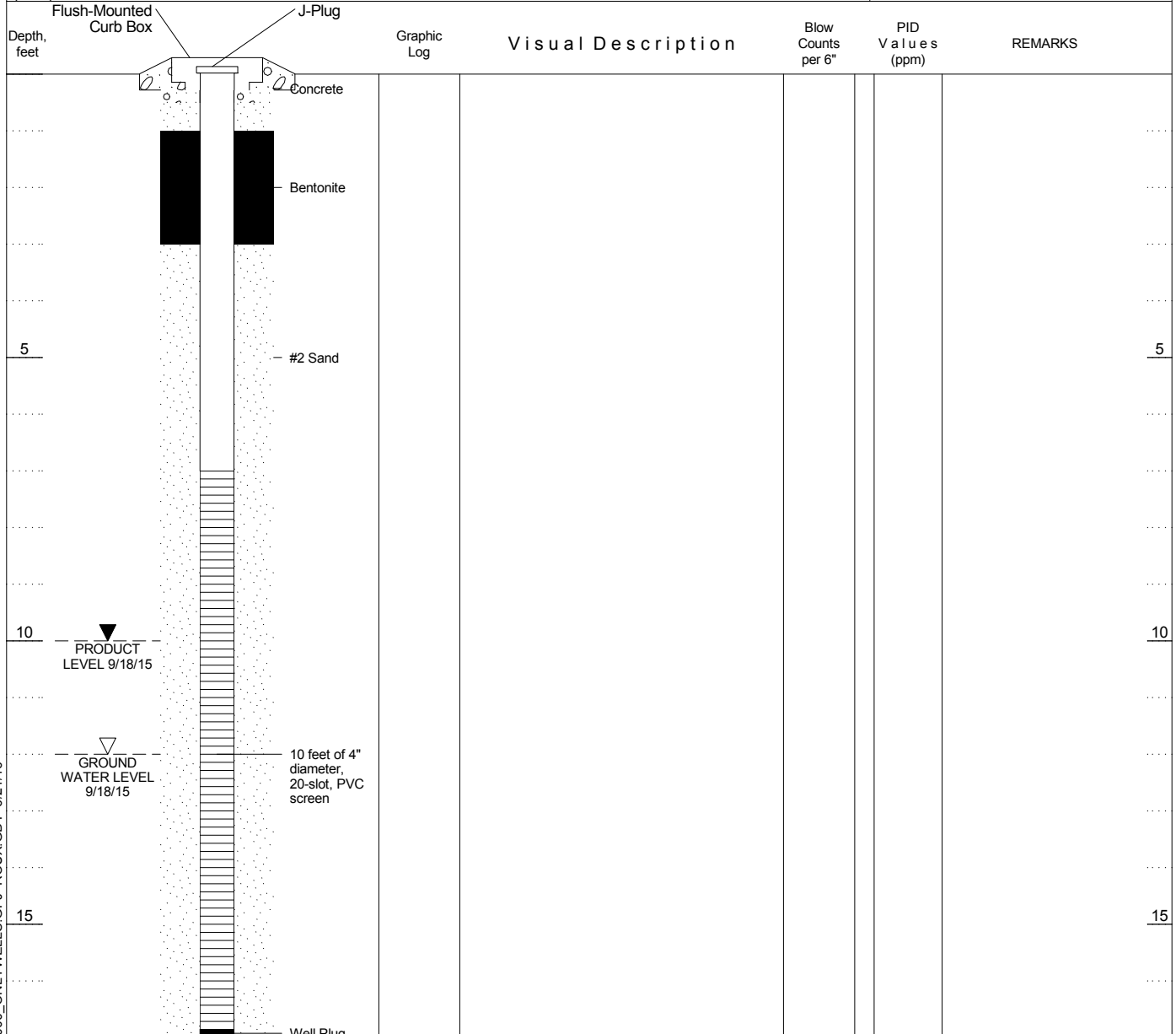
ROUX ASSOCIATES, INC.  
Environmental Consulting  
& Management

209 Shafter Street  
Islandia, NY 11749  
Telephone: (631) 232-2600  
Fax: (631) 232-9898

Page 1 of 1

## WELL CONSTRUCTION LOG

WELL NO. <b>RW-04</b>	NORTHING <b>Not Measured</b>	EASTING <b>Not Measured</b>
PROJECT NO./NAME <b>2051.0001Y000 / Former Paragon Paint &amp; Varnish</b>		LOCATION <b>5-49 46th Avenue</b>
APPROVED BY	LOGGED BY <b>R. Henke</b>	<b>Long Island City, New York</b>
DRILLING CONTRACTOR/DRILLER <b>Zebra / Carlos</b>		GEOGRAPHIC AREA
DRILL BIT DIAMETER/TYPE <b>/</b>	BOREHOLE DIAMETER <b>6-inches</b>	DRILLING EQUIPMENT/METHOD <b>/ Geoprobe</b>
CASING MAT./DIA. <b>PVC / 6-inch</b>	SCREEN: TYPE <b>Slotted</b> MAT. <b>PVC</b>	TOTAL LENGTH <b>10.0ft</b> DIA. <b>6-inch</b> SLOT SIZE <b>20-Slot</b>
ELEVATION OF: (Feet)	GROUND SURFACE <b>0.00</b>	TOP OF WELL CASING <b>/</b>
		TOP & BOTTOM SCREEN <b>/</b>
		GRAVEL PACK SIZES <b>Morie #2</b>



BORING/FEET 2051.0001Y000\_ONLYWELLS.GPJ ROUX.GDT 6/21/16





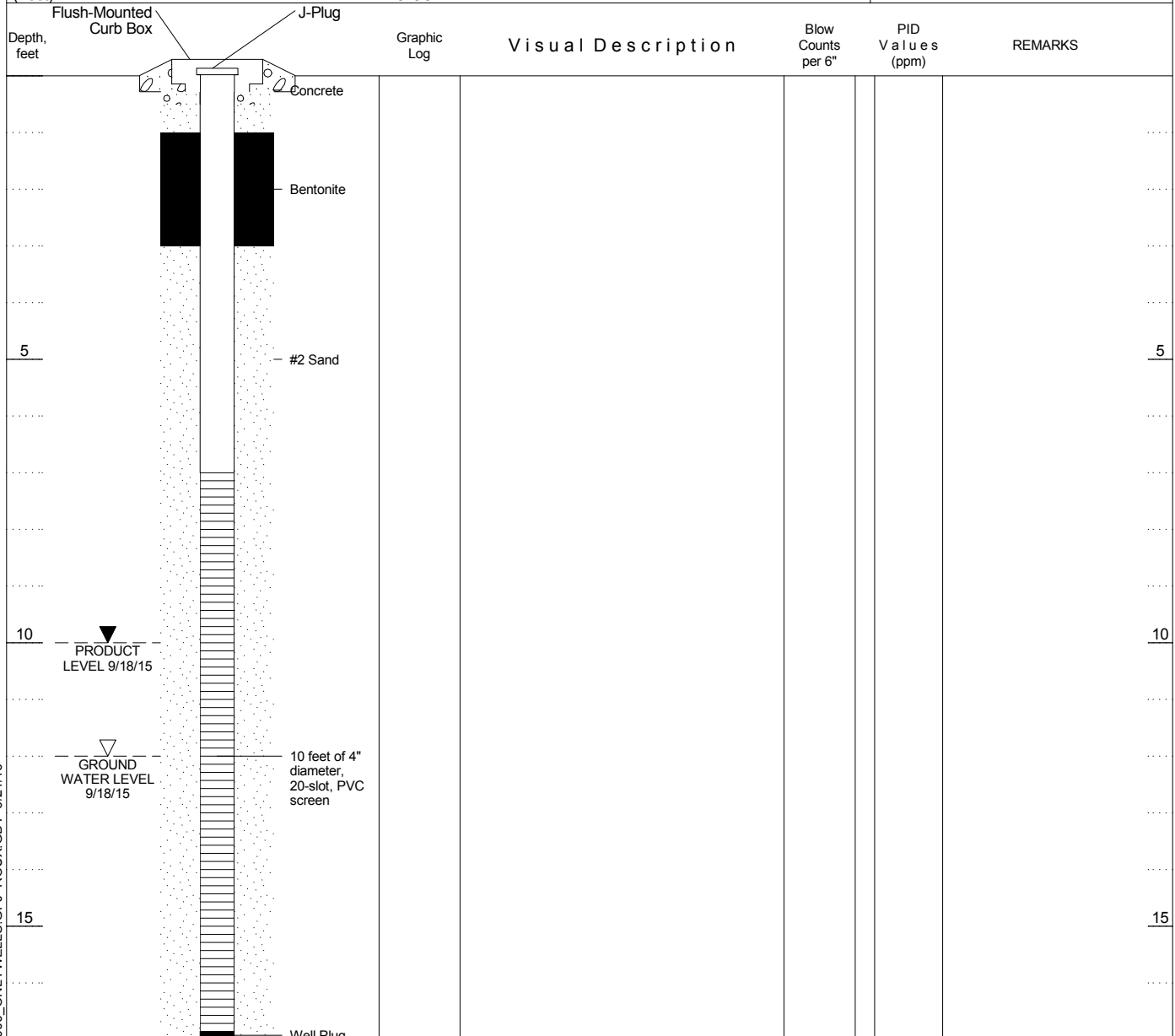
ROUX ASSOCIATES, INC.  
Environmental Consulting  
& Management

209 Shafter Street  
Islandia, NY 11749  
Telephone: (631) 232-2600  
Fax: (631) 232-9898

Page 1 of 1

## WELL CONSTRUCTION LOG

WELL NO. <b>RW-05</b>	NORTHING <b>Not Measured</b>	EASTING <b>Not Measured</b>
PROJECT NO./NAME <b>2051.0001Y000 / Former Paragon Paint &amp; Varnish</b>		LOCATION <b>5-49 46th Avenue</b>
APPROVED BY	LOGGED BY <b>R. Henke</b>	<b>Long Island City, New York</b>
DRILLING CONTRACTOR/DRILLER <b>Zebra / Carlos</b>		GEOGRAPHIC AREA
DRILL BIT DIAMETER/TYPE <b>/</b>	BOREHOLE DIAMETER <b>6-inches</b>	DRILLING EQUIPMENT/METHOD <b>/ Geoprobe</b>
CASING MAT./DIA. <b>PVC / 6-inch</b>	SCREEN: <b>TYPE Slotted</b>	MAT. <b>PVC</b>
ELEVATION OF: (Feet)		START-FINISH DATE <b>2/11/16-2/12/16</b>
GROUND SURFACE	TOP OF WELL CASING <b>0.00</b>	TOTAL LENGTH <b>9.5 ft</b>
	TOP & BOTTOM SCREEN <b>/</b>	DIA. <b>6-inch</b>
		SLOT SIZE <b>20-Slot</b>
		GRAVEL PACK SIZES <b>More #2</b>



BORING/FEET 2051.0001Y000\_ONLYWELLS.GPJ ROUX.GDT 6/21/16