



Daily Report for August 1, 2019

**Far Rockaway Project
20-02 Mott Avenue
Far Rockaway, NY
BCP #C241224**

1. An update of progress made during the reporting day including references to alphanumeric map for Site activities.

-Broke up concrete in A3.

2. Locations of work and quantities of material imported and exported from the Site.

-30 loads of non-hazardous soil were exported from the Site today to Clean Earth of Bethlehem in Bethlehem, PA from grid B1 (0-7) and C1 (0-7).

-3 loads of concrete were exported from the Site today to Russo in Queens, NY.

-1 load of asphalt was exported from the Site today to Rason Asphalt in Inwood, NY.

-No material was imported to the Site today.

3. A summary of any and all complaints with relevant details (names, phone numbers).

No complaints.

4. A summary of CAMP findings (air and dust readings).

No elevated PID or dust readings were identified.

5. An explanation of notable Site conditions.

Today's work was overseen by David Klein of CA RICH. No conditions of note were observed.

6. Planned Activities

-Continue exportation of soil offsite.

Photo Log

Photo 1 –
View of
concrete
being loaded
out in B4.



Photo 2 –
View of soil
being loaded
out in B1.



Photo 3 –
View of
breaking up
concrete in
A3.





Daily Report for August 2, 2019

**Far Rockaway Project
20-02 Mott Avenue
Far Rockaway, NY
BCP #C241224**

1. An update of progress made during the reporting day including references to alpha-numeric map for Site activities.

2. Locations of work and quantities of material imported and exported from the Site.

-30 loads of non-hazardous soil were exported from the Site today to Clean Earth of Bethlehem in Bethlehem, PA from grid B1 (0-7) and C1 (0-7).

-Imported 40 tons of #67 stone from New York Sand and Stone in Brooklyn, New York today.

3. A summary of any and all complaints with relevant details (names, phone numbers).

No complaints.

4. A summary of CAMP findings (air and dust readings).

No elevated PID or dust readings were identified.

5. An explanation of notable Site conditions.

Today's work was overseen by David Klein of CA RICH. No conditions of note were observed.

6. Planned Activities

-Continue exportation of soil offsite to Clean Earth of Bethlehem.

Photo Log

Photo 1 –
View of soil
being loaded
out in C1.



Photo 2 –
View of B3
looking
southwest.



Photo 3 –
View of F3
looking
southeast.





Daily Report for August 5, 2019

**Far Rockaway Project
20-02 Mott Avenue
Far Rockaway, NY
BCP #C241224**

1. An update of progress made during the reporting day including references to alphanumeric map for Site activities.

-Installed Preprufe 200 waterproofing membrane in elevator pits in grids E2, F2, and F3.

2. Locations of work and quantities of material imported and exported from the Site.

-32 loads of non-hazardous soil were exported from the Site today to Clean Earth of Bethlehem in Bethlehem, PA from grid B1 (0-7) and C1 (0-7).

-No material was imported to the Site today.

3. A summary of any and all complaints with relevant details (names, phone numbers).

No complaints.

4. A summary of CAMP findings (air and dust readings).

No elevated PID or dust readings were identified.

5. An explanation of notable Site conditions.

Today's work was overseen by David Klein of CA RICH. No conditions of note were observed.

6. Planned Activities

-Continue exportation of soil offsite to Clean Earth of Bethlehem.

Photo Log

Photo 1 –
View of soil
being loaded
out in C1.



Photo 2 –
View of F2
and F3
looking south.



Photo 3 –
View of
waterproofing
in F2.





Daily Report for August 6, 2019

**Far Rockaway Project
20-02 Mott Avenue
Far Rockaway, NY
BCP #C241224**

1. An update of progress made during the reporting day including references to alpha-numeric map for Site activities.

- Broke up concrete in A4.
- Re-collected Endpoint sample EP-28 (15') to be analyzed for only PCBs.
- Installed rebar and Preprufe 200 in grids E2 and F2 for footings.
- Welded I-beams in grid A1.

2. Locations of work and quantities of material imported and exported from the Site.

- 29 loads of non-hazardous soil were exported from the Site today to Clean Earth of Bethlehem in Bethlehem, PA from grid C1 (0-7) and D1 (0-7).
- No material was imported to the Site today.

3. A summary of any and all complaints with relevant details (names, phone numbers).

No complaints.

4. A summary of CAMP findings (air and dust readings).

No elevated PID or dust readings were identified.

5. An explanation of notable Site conditions.

Today's work was overseen by David Klein of CA RICH. No conditions of note were observed.

6. Planned Activities

- Continue exportation of soil offsite to Clean Earth of Bethlehem.
- Continue welding I-beams

Photo Log

Photo 1 –
View of soil
being loaded
out in C1.



Photo 2 –
View of
breaking up
of concrete in
A4.



Photo 3 –
View of
installed rebar
and Preprufe
200
waterproofing
in F2.





Daily Report for August 7, 2019

**Far Rockaway Project
20-02 Mott Avenue
Far Rockaway, NY
BCP #C241224**

1. An update of progress made during the reporting day including references to alpha-numeric map for Site activities.

- Welded I-beams in grid A1.
- Poured concrete for footings in grid E2, F2, and F3.

2. Locations of work and quantities of material imported and exported from the Site.

- 29 loads of non-hazardous soil were exported from the Site today to Clean Earth of Bethlehem in Bethlehem, PA from grid C1 (0-7) and D1 (0-7).
- No material was imported to the Site today.

3. A summary of any and all complaints with relevant details (names, phone numbers).

No complaints.

4. A summary of CAMP findings (air and dust readings).

No elevated PID or dust readings were identified.

5. An explanation of notable Site conditions.

Today's work was overseen by David Klein of CA RICH. No conditions of note were observed.

6. Planned Activities

- Continue exportation of soil offsite to Clean Earth of Bethlehem.
- Continue welding I-beams

Photo Log

Photo 1 –
View of soil
being loaded
out in C1.



Photo 2 –
View of
welding I-
beams in A1.



Photo 3 –
View of
pouring
concrete in
F3.





Daily Report for August 9, 2019

**Far Rockaway Project
20-02 Mott Avenue
Far Rockaway, NY
BCP #C241224**

1. An update of progress made during the reporting day including references to alpha-numeric map for Site activities.

- Welded I-beams in grid A1.
- Formwork and Preprufe 200 waterproofing membrane installation for footings in D2, E2, and E3.
- Covered west side of stockpile in Grids D7 and E7.
- Stockpiled soil from Building C in grids D7 and E7.
- Broke up concrete in A4.

2. Locations of work and quantities of material imported and exported from the Site.

- 32 loads of non-hazardous soil were exported from the Site today to Clean Earth of Bethlehem in Bethlehem, PA from grid C1 (0-7) and D1 (0-7).
- 25 loads of non-hazardous soil were exported from the Site today to Clean Earth of North Jersey in Kearny, NJ from grids A3 (7-15) and B3 (7-15).
- 12 loads of concrete exported from the Site today to Russo in Queens, NY.
- 1 load of asphalt was exported from the Site today to Rason Asphalt in Inwood, NY.
- No material was imported to the Site today.

3. A summary of any and all complaints with relevant details (names, phone numbers).

No complaints.

4. A summary of CAMP findings (air and dust readings).

No elevated PID or dust readings were identified.

5. An explanation of notable Site conditions.

Today's work was overseen by David Klein of CA RICH. No conditions of note were observed.

6. Planned Activities

- Continue exportation of soil offsite to Clean Earth of Bethlehem.
- Continue welding I-beams
- Continue formwork and waterproofing installation for Building B footings

Photo Log

Photo 1 –
View of soil
being loaded
out in C1.



Photo 2 –
View of
excavated dry
cleaners
footprint
down to 15
feet below
street
surface.



Photo 3 –
View of west
side of
stockpile
covered with
plastic
sheeting.





Daily Report for August 12, 2019

**Far Rockaway Project
20-02 Mott Avenue
Far Rockaway, NY
BCP #C241224**

1. An update of progress made during the reporting day including references to alphanumeric map for Site activities.

- Welded I-beams in grid B1.
- Formwork, rebar, and Preprufe 200 waterproofing membrane installation for footings in D2, E2, and E3.
- Poured concrete for column footings in grids D3 and E3.
- Stockpiled soil from Building C in grids D7 and E7.
- Collected Endpoint samples EP-46 through EP-52 at 7 feet below grade; collected EP-53 and EP-54 at 15 feet below grade.

2. Locations of work and quantities of material imported and exported from the Site.

- 32 loads of non-hazardous soil were exported from the Site today to Clean Earth of Bethlehem in Bethlehem, PA from grid C2 (0-7).
- 2 loads of concrete exported from the Site today to Russo in Queens, NY.
- No material was imported to the Site today.

3. A summary of any and all complaints with relevant details (names, phone numbers).

No complaints.

4. A summary of CAMP findings (air and dust readings).

No elevated PID or dust readings were identified.

5. An explanation of notable Site conditions.

Today's work was overseen by David Klein of CA RICH. No conditions of note were observed.

6. Planned Activities

- Continue exportation of soil offsite to Clean Earth of Bethlehem.
- Continue welding I-beams
- Continue formwork and waterproofing installation for Building B footings

Photo Log

Photo 1 –
View of soil
being loaded
out in C2.



Photo 2 –
View of
column
footings with
installed
Preprufe 200
waterproofing
membrane
and rebar.



Photo 3 –
View of D2
and D3
looking
southeast.





Daily Report for August 13, 2019

**Far Rockaway Project
20-02 Mott Avenue
Far Rockaway, NY
BCP #C241224**

1. An update of progress made during the reporting day including references to alpha-numeric map for Site activities.

- Welded I-beams in grid B1.
- Formwork, rebar, and Preprufe 200 waterproofing membrane installation for footings in D2, E2, and E3.
- Stockpiled soil from Building C in grids D7 and E7.
- Covered about 2/3 of stockpile in grids C7, D7, and E7.

2. Locations of work and quantities of material imported and exported from the Site.

- 32 loads of non-hazardous soil were exported from the Site today to Clean Earth of Bethlehem in Bethlehem, PA from grid C2 (0-7).
- No material was imported to the Site today.

3. A summary of any and all complaints with relevant details (names, phone numbers).

No complaints.

4. A summary of CAMP findings (air and dust readings).

No elevated PID or dust readings were identified.

5. An explanation of notable Site conditions.

Today's work was overseen by David Klein of CA RICH. No conditions of note were observed.

6. Planned Activities

- Continue exportation of soil offsite to Clean Earth of Bethlehem.
- Continue welding I-beams
- Continue formwork and waterproofing installation for Building B footings

Photo Log

Photo 1 –
View of soil
being loaded
out in C2.



Photo 2 –
View of
stockpile
looking
northeast.



Photo 3 –
View of
stockpile
looking south.





Daily Report for August 14, 2019

**Far Rockaway Project
20-02 Mott Avenue
Far Rockaway, NY
BCP #C241224**

1. An update of progress made during the reporting day including references to alpha-numeric map for Site activities.

- Welded I-beams in grid B1.
- Poured concrete for footings in D2, E2, and E3.
- Stockpiled concrete in A4.
- Stockpiled soil from Building C in grids D7 and E7.

2. Locations of work and quantities of material imported and exported from the Site.

- 29 loads of non-hazardous soil were exported from the Site today to Clean Earth of Bethlehem in Bethlehem, PA from grid C2 (0-7).
- No material was imported to the Site today.

3. A summary of any and all complaints with relevant details (names, phone numbers).

No complaints.

4. A summary of CAMP findings (air and dust readings).

No elevated PID or dust readings were identified.

5. An explanation of notable Site conditions.

Today's work was overseen by David Klein of CA RICH. No conditions of note were observed.

6. Planned Activities

- Continue exportation of soil offsite to Clean Earth of Bethlehem.
- Continue welding I-beams
- Continue formwork and waterproofing installation for Building B footings

Photo Log

Photo 1 –
View of soil
being loaded
out in C2.



Photo 2 –
View of
stockpiling
concrete in
A4.



Photo 3 –
View of D2
and E2
looking
southeast.





Daily Report for August 15, 2019

**Far Rockaway Project
20-02 Mott Avenue
Far Rockaway, NY
BCP #C241224**

1. An update of progress made during the reporting day including references to alphanumeric map for Site activities.

- Welded I-beams in grid B1.
- Stockpiled soil from Building C in grids D7 and E7.

2. Locations of work and quantities of material imported and exported from the Site.

- 29 loads of non-hazardous soil were exported from the Site today to Clean Earth of Bethlehem in Bethlehem, PA from grid C2 (0-7).
- 12 loads of concrete exported from the Site today to Island Park in Island Park, NY.
- 2 loads of asphalt were exported from the Site today to Rason Asphalt in Inwood, NY.
- No material was imported to the Site today.

3. A summary of any and all complaints with relevant details (names, phone numbers).

No complaints.

4. A summary of CAMP findings (air and dust readings).

No elevated PID or dust readings were identified.

5. An explanation of notable Site conditions.

Today's work was overseen by David Klein of CA RICH. No conditions of note were observed.

6. Planned Activities

- Continue exportation of soil offsite to Clean Earth of Bethlehem.
- Continue welding I-beams
- Continue formwork and waterproofing installation for Building B footings

Photo Log

Photo 1 –
View of soil
being loaded
out in C2.



Photo 2 –
View of
concrete
being loaded
out in A4.



Photo 3 –
View of D2
and E2
looking
southeast.





Daily Report for August 16, 2019

**Far Rockaway Project
20-02 Mott Avenue
Far Rockaway, NY
BCP #C241224**

1. An update of progress made during the reporting day including references to alpha-numeric map for Site activities.

- Welded I-beams in grid A1.
- Stockpiled soil from Building C in grids D7 and E7.
- Formwork and Preprufe 200 waterproofing membrane installation in D4 and E4.
- Cover stockpile in C7, D7, and E7 completely.
- Collected Endpoint samples EP-55 through EP-57 at 7 feet below grade.

2. Locations of work and quantities of material imported and exported from the Site.

- 29 loads of non-hazardous soil were exported from the Site today to Clean Earth of Bethlehem in Bethlehem, PA from grid C3 (0-7).
- No material was imported to the Site today.

3. A summary of any and all complaints with relevant details (names, phone numbers).

No complaints.

4. A summary of CAMP findings (air and dust readings).

No elevated PID or dust readings were identified.

5. An explanation of notable Site conditions.

Today's work was overseen by David Klein of CA RICH. No conditions of note were observed.

6. Planned Activities

- Continue exportation of soil offsite to Clean Earth of Bethlehem.
- Continue welding I-beams
- Continue formwork and waterproofing installation for Building B footings

Photo Log

Photo 1 –
View of soil
being loaded
out in C2.



Photo 2 –
View of
covered
stockpile
looking south.



Photo 3 –
View of
covered
stockpile
looking north.





Daily Report for August 19, 2019

**Far Rockaway Project
20-02 Mott Avenue
Far Rockaway, NY
BCP #C241224**

1. An update of progress made during the reporting day including references to alpha-numeric map for Site activities.

- Welded I-beams in grid A1.
- Formwork and Preprufe 200 waterproofing membrane installation in D2 and D3.
- Poured concrete in D3, D4 and E4.

2. Locations of work and quantities of material imported and exported from the Site.

- 27 loads of non-hazardous soil were exported from the Site today to Clean Earth of Bethlehem in Bethlehem, PA from grid C3 (0-7).
- No material was imported to the Site today.

3. A summary of any and all complaints with relevant details (names, phone numbers).

No complaints.

4. A summary of CAMP findings (air and dust readings).

No elevated PID or dust readings were identified.

5. An explanation of notable Site conditions.

Today's work was overseen by David Klein of CA RICH. No conditions of note were observed.

6. Planned Activities

- Continue exportation of soil offsite to Clean Earth of Bethlehem.
- Continue welding I-beams
- Continue formwork and waterproofing installation for Building B footings

Photo Log

Photo 1 –
View of soil
being loaded
out in C2.



Photo 2 –
View of
formwork and
Preprufe 200
waterproofing
membrane
installed in
D2.



Photo 3 –
View of
grading soil in
C2 and D2.





Daily Report for August 21, 2019

**Far Rockaway Project
20-02 Mott Avenue
Far Rockaway, NY
BCP #C241224**

1. An update of progress made during the reporting day including references to alpha-numeric map for Site activities.

- Formwork and Preprufe 200 waterproofing membrane installation in D2 and D3.
- Graded soil in C3 and D3.
- Stockpiled soil from Building C in E7.

2. Locations of work and quantities of material imported and exported from the Site.

- 22 loads of non-hazardous soil were exported from the Site today to Clean Earth of Bethlehem in Bethlehem, PA from grid D4 (0-7).
- No material was imported to the Site today.

3. A summary of any and all complaints with relevant details (names, phone numbers).

No complaints.

4. A summary of CAMP findings (air and dust readings).

No elevated PID or dust readings were identified.

5. An explanation of notable Site conditions.

Today's work was overseen by David Klein of CA RICH. No conditions of note were observed.

6. Planned Activities

- Continue stockpile of Building C soils
- Continue formwork and waterproofing installation for Building B footings

Photo Log

Photo 1 –
View of soil
being
stockpiled
from Building
C.



Photo 2 –
View of D3
and D4
looking
southeast.



Photo 3 –
View of
Preprufe 200
waterproofing
membrane in
grid E4.





Daily Report for August 22, 2019

**Far Rockaway Project
20-02 Mott Avenue
Far Rockaway, NY
BCP #C241224**

1. An update of progress made during the reporting day including references to alphanumeric map for Site activities.

- Formwork, rebar, and Preprufe 200 waterproofing membrane installation in D2, C2, D3, D4, E3, and E4.
- Pouring concrete over rebar in footings in C4, D4, and E3
- Stockpiled soil from Building C in E7.
- Collect Endpoint sample EP-58 and EP-58 DUP at 7 feet below grade.

2. Locations of work and quantities of material imported and exported from the Site.

-No material was exported from the Site today. Concrete was imported to the site today in mixing trucks.

3. A summary of any and all complaints with relevant details (names, phone numbers).

No complaints.

4. A summary of CAMP findings (air and dust readings).

No elevated PID or dust readings were identified.

5. An explanation of notable Site conditions.

Today's work was overseen by David Klein and Scott Ganz of CA RICH. No conditions of note were observed.

6. Planned Activities

- Continue stockpile of Building C soils
- Continue formwork and waterproofing installation for Building B footings

Photo Log

Photo 1 –
View of soil
being
relocated
from Building
C to the
stockpile in
E7. See
Photo 3 for
picture of
stockpile



Photo 2 –
View of
framework
and rebar
installation for
footings
throughout
Building B
footprint



Photo 3 –
View of soil
being added
to the
stockpile
located in E7





Daily Report for August 23, 2019

**Far Rockaway Project
20-02 Mott Avenue
Far Rockaway, NY
BCP #C241224**

1. An update of progress made during the reporting day including references to alphanumeric map for Site activities.

- Formwork, rebar, and Preprufe 200 waterproofing membrane installation in C2, C3, C4, D2, D3 and D4
- Poured concrete into footings in C2 and D2
- Continued stockpiling soil from Building C in E7.

2. Locations of work and quantities of material imported and exported from the Site.

- No material was exported from the Site today. Concrete was imported to the site today in mixing trucks.

3. A summary of any and all complaints with relevant details (names, phone numbers).

No complaints.

4. A summary of CAMP findings (air and dust readings).

No elevated PID or dust readings were identified.

5. An explanation of notable Site conditions.

Today's work was overseen by David Klein and Scott Ganz of CA RICH. No conditions of note were observed.

6. Planned Activities

- Continue stockpile of Building C soils
- Continue formwork and waterproofing installation for Building B footings
- Export approved soil from Building C to Posillico facility in Farmingdale

Photo Log

Photo 1 –
View of
waterproofing
installation in
C4 and D4



Photo 2 –
View of
completed
waterproofing
installation in
C4 and D4



Photo 3 –
View of
stockpile
located in E7





Daily Report for August 26, 2019

**Far Rockaway Project
20-02 Mott Avenue
Far Rockaway, NY
BCP #C241224**

1. An update of progress made during the reporting day including references to alpha-numeric map for Site activities.

- Framework and rebar installation in C3, E2, and F2
- Transport of soil from grids B2 and B3 to Posillico Facility in Farmingdale.

2. Locations of work and quantities of material imported and exported from the Site.

- 18 loads of non-hazardous soil were exported from the Site today to Posillico in Farmingdale, NY from grids B2 and B3 (7'-15'). PVC piping was imported to the site today.

3. A summary of any and all complaints with relevant details (names, phone numbers).

No complaints.

4. A summary of CAMP findings (air and dust readings).

No elevated PID or dust readings were identified.

5. An explanation of notable Site conditions.

Today's work was overseen by Scott Ganz of CA RICH. No conditions of note were observed.

6. Planned Activities

- Continue formwork and waterproofing installation for Building B footings
- Export approved soil from Building C to Blue Water Environmental in Island Park

Photo Log

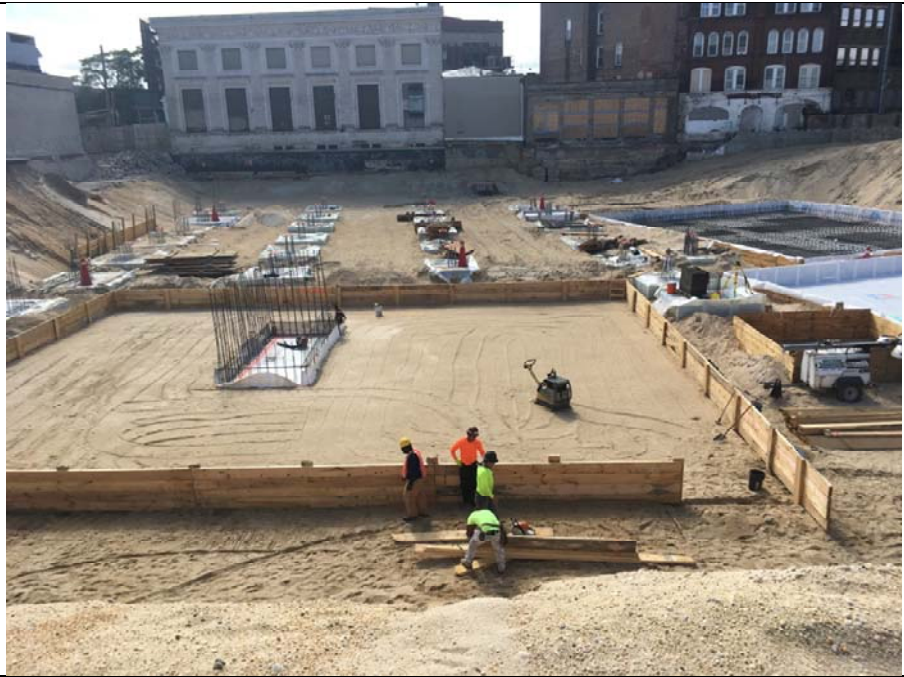
Photo 1 –
View of soil
from B2 and
B3 being
loaded into
trailer



Photo 2 –
View of B2
and B3 after
excavation



Photo 3 –
View of
framework
installation in
C3





Daily Report for August 27, 2019

**Far Rockaway Project
20-02 Mott Avenue
Far Rockaway, NY
BCP #C241224**

1. An update of progress made during the reporting day including references to alpha-numeric map for Site activities.

- Preprufe 200 and rebar installation in C2, C3, and C4
- Transport of soil from grids B2 and B3 (7'-15') to Blue Water Environmental in Island Park, NY.
- Excavation in A3 and A4 from 7'-15'.

2. Locations of work and quantities of material imported and exported from the Site.

- 15 loads of non-hazardous soil were exported from the Site today to Blue Water Environmental in Island Park, NY from grids B2 and B3 (7'-15'). No materials were imported to the site today.

3. A summary of any and all complaints with relevant details (names, phone numbers).

No complaints.

4. A summary of CAMP findings (air and dust readings).

No elevated PID or dust readings were identified.

5. An explanation of notable Site conditions.

Today's work was overseen by Scott Ganz of CA RICH. No conditions of note were observed.

6. Planned Activities

- Continue formwork and waterproofing installation for Building B footings
- Export approved soil from Building C to Blue Water Environmental in Island Park

Photo Log

Photo 1 –
View of rebar
installation C3
and C4



Photo 2 –
View of
excavation in
A3 and A4



Photo 3 –
Building C
progress



Photo 4–
Preprufe 200
waterproofing
membrane,
as shown in
Photo 1.



Photo 5-
Building B
progress





Daily Report for August 28, 2019

**Far Rockaway Project
20-02 Mott Avenue
Far Rockaway, NY
BCP #C241224**

1. An update of progress made during the reporting day including references to alpha-numeric map for Site activities.

- Excavation and framework in F2, F3, and F4
- Rebar placement in C4.
- Transport of soil from grids B2 and B3 (7'-15') to Blue Water Environmental in Island Park, NY.

2. Locations of work and quantities of material imported and exported from the Site.

- 18 loads of non-hazardous soil were exported from the Site today to Blue Water Environmental in Island Park, NY from grids B2 and B3 (7'-15'). Rebar was imported to the site today.

3. A summary of any and all complaints with relevant details (names, phone numbers).

No complaints.

4. A summary of CAMP findings (air and dust readings).

No elevated PID or dust readings were identified.

5. An explanation of notable Site conditions.

Today's work was overseen by Scott Ganz of CA RICH. No conditions of note were observed.

6. Planned Activities

- Continue formwork, rebar, and waterproofing installation for Building B footings
- Export approved soil from Building C to Blue Water Environmental in Island Park

Photo Log

Photo 1 –
View of
excavation in
Building C



Photo 2 –
View of
Building C
footprint





Daily Report for August 29, 2019

**Far Rockaway Project
20-02 Mott Avenue
Far Rockaway, NY
BCP #C241224**

1. An update of progress made during the reporting day including references to alpha-numeric map for Site activities.

- Waterproofing installation in C3
- Electrical conduit installation in E4
- Drilling and grouting tiebacks in B1
- Pouring Concrete in F1/F2 (Strip footing)
- Transport of soil from grids A2/A3 and B2/B3 (7'-15') to Blue Water Environmental in Island Park, NY.

2. Locations of work and quantities of material imported and exported from the Site.

- 18 loads of non-hazardous soil were exported from the Site today to Blue Water Environmental in Island Park, NY from grids A2, A3, B2, and B3 (7'-15'). Concrete was imported to the site today in mixing trucks.

3. A summary of any and all complaints with relevant details (names, phone numbers).

No complaints.

4. A summary of CAMP findings (air and dust readings).

No elevated PID or dust readings were identified.

5. An explanation of notable Site conditions.

Today's work was overseen by Scott Ganz of CA RICH. No conditions of note were observed.

6. Planned Activities

- Continue formwork, rebar, and waterproofing installation for Building B footings
- Export approved soil from Building C to Blue Water Environmental in Island Park

Photo Log

Photo 1 –
View of
tieback
installation
and grouting
in B1



Photo 2 –
View of
electrical
conduit
installation
in E4



Photo 3- View
of Building C
footprint





Daily Report for August 30, 2019

**Far Rockaway Project
20-02 Mott Avenue
Far Rockaway, NY
BCP #C241224**

1. An update of progress made during the reporting day including references to alpha-numeric map for Site activities.

- Electrical conduit installation in D4
- Transport of concrete debris from A5
- Transport of soil from grids A2, A3, B2, and B3 (7'-15') to Blue Water Environmental in Island Park, NY.

2. Locations of work and quantities of material imported and exported from the Site.

- 35 loads of non-hazardous soil were exported from the Site today to Blue Water Environmental in Island Park, NY from grids A2, A3, B2, and B3 (7'-15'). Rebar and cement were imported to the site today.

3. A summary of any and all complaints with relevant details (names, phone numbers).

No complaints.

4. A summary of CAMP findings (air and dust readings).

No elevated PID or dust readings were identified.

5. An explanation of notable Site conditions.

Today's work was overseen by Scott Ganz of CA RICH. No conditions of note were observed.

6. Planned Activities

- Continue formwork, rebar, and conduit installation for Building B footings.
- Install tiebacks for Building C.
- Export approved soil from Building C to Blue Water Environmental in Island Park.

Photo Log

Photo 1 –
View of
excavator
loading soil
into trucks.



Photo 2 –
View of
Building C
excavation



Photo 3- View
of Building B
footprint

