



Daily Report for February 3, 2020

**Far Rockaway Project
20-02 Mott Avenue
Far Rockaway, NY
BCP #C241224**

1. An update of progress made during the reporting day including references to alpha-numeric map for Site activities.

- Formwork and rebar installation in A1- A4, B1- B4, D2- D4, E2- E4, and F2- F4.
- Stripped asphalt in C5 and C6.

2. Locations of work and quantities of material imported and exported from the Site.

- 32 loads of non-hazardous soil were exported from the Site today to Clean Earth of Bethlehem in Bethlehem, PA from grid C5 (0-7) and D5 (0-7).
- 4 loads of asphalt were exported were exported to the Tilcon facility in West Nyack, NY.
- No materials were imported to the site today.

3. A summary of any and all complaints with relevant details (names, phone numbers).

- No complaints.

4. A summary of CAMP findings (air and dust readings).

- No elevated PID or dust readings were identified.

5. An explanation of notable Site conditions.

- Today's work was overseen by David Klein of CA RICH. No conditions of note were observed.

6. Planned Activities

- Continue formwork and rebar installation for Building B first through third floors.
- Continue formwork and rebar installation for Building C first floor.
- Continue excavating soil for Building H.

Photo Log

Photo 1- View of loading out soil in C5 for export offsite.



Photo 2- View of formwork and rebar installation in A3, A4, B3, and B4.



Photo 3- View
of excavating
soil in C5 and
C6.





Daily Report for February 4, 2020

**Far Rockaway Project
20-02 Mott Avenue
Far Rockaway, NY
BCP #C241224**

1. An update of progress made during the reporting day including references to alpha-numeric map for Site activities.

- Formwork and rebar installation in A1- A4, B1- B4, D2- D4, E2- E4, and F2- F4.
- Stripped asphalt in C5 and C6.

2. Locations of work and quantities of material imported and exported from the Site.

- 28 loads of non-hazardous soil were exported from the Site today to Clean Earth of Bethlehem in Bethlehem, PA from grid C5 (0-7) and D5 (0-7).
- 4 loads of asphalt were exported were exported to the Tilcon facility in West Nyack, NY.
- No materials were imported to the site today.

3. A summary of any and all complaints with relevant details (names, phone numbers).

- No complaints.

4. A summary of CAMP findings (air and dust readings).

- No elevated PID or dust readings were identified.

5. An explanation of notable Site conditions.

- Today's work was overseen by David Klein of CA RICH. No conditions of note were observed.

6. Planned Activities

- Continue formwork and rebar installation for Building B first through third floors.
- Continue formwork and rebar installation for Building C first floor.
- Continue excavating soil for Building H.

Photo Log

Photo 1- View of loading out soil in C5 for export offsite.



Photo 2- View of formwork and rebar installation in A3, A4, B3, and B4.



Photo 3- View
of formwork
and rebar
installation in
D3, D4, E3,
and E4.





Daily Report for February 5, 2020

**Far Rockaway Project
20-02 Mott Avenue
Far Rockaway, NY
BCP #C241224**

1. An update of progress made during the reporting day including references to alpha-numeric map for Site activities.

- Formwork and rebar installation in A1- A4, B1- B4, D2- D4, E2- E4, and F2- F4.
- Stripped asphalt in C6, D6, and E6.

2. Locations of work and quantities of material imported and exported from the Site.

- 34 loads of non-hazardous soil were exported from the Site today to Clean Earth of Bethlehem in Bethlehem, PA from grid C5 (0-7), C6 (0-7), D6 (0-7), and E-6 (0-7).
- 8 loads of concrete were exported were exported to the P.Park facility in Prospect Park, NJ.
- No materials were imported to the site today.

3. A summary of any and all complaints with relevant details (names, phone numbers).

- No complaints.

4. A summary of CAMP findings (air and dust readings).

- No elevated PID or dust readings were identified.

5. An explanation of notable Site conditions.

- Today's work was overseen by Thomas Brown of CA RICH. No conditions of note were observed.

6. Planned Activities

- Continue formwork and rebar installation for Building B first through third floors.
- Continue formwork and rebar installation for Building C first floor.
- Continue excavating soil for Building H.

Photo Log

Photo 1- View of formwork and rebar installation in D3, D4, E3, and E4.



Photo 2- View
of formwork
and rebar
installation in
A3, A4, B3,
and B4.



Photo 3- View of loading out soil in D6/E6 for export offsite.





Daily Report for February 6, 2020

**Far Rockaway Project
20-02 Mott Avenue
Far Rockaway, NY
BCP #C241224**

1. An update of progress made during the reporting day including references to alpha-numeric map for Site activities.

- Formwork and rebar installation in A1- A4, B1- B4, D2- D4, E2- E4, and F2- F4.
- Stripped asphalt in C6, D6, and E6.

2. Locations of work and quantities of material imported and exported from the Site.

- No loads of non-hazardous soil were exported from the Site today to Clean Earth of Bethlehem in Bethlehem, PA.
- 4 loads of asphalt and 2 loads of concrete were exported were exported to the Tilcon facility in Prospect Park, NJ.
- No materials were imported to the site today.

3. A summary of any and all complaints with relevant details (names, phone numbers).

- No complaints.

4. A summary of CAMP findings (air and dust readings).

- No elevated PID or dust readings were identified.

5. An explanation of notable Site conditions.

- Today's work was overseen by Thomas Brown of CA RICH. No conditions of note were observed.

6. Planned Activities

- Continue formwork and rebar installation for Building B first through third floors.
- Continue formwork and rebar installation for Building C first floor.
- Continue excavating soil for Building H.

Photo Log

Photo 1- View of formwork and rebar installation in D3, D4, E3, and E4.



Photo 2- View of formwork and rebar installation in A3, A4, B3, and B4.



Photo 3- View
of excavation in
C5, C6, D5,
D6, E5, and
E6.





Daily Report for February 7, 2020

**Far Rockaway Project
20-02 Mott Avenue
Far Rockaway, NY
BCP #C241224**

1. An update of progress made during the reporting day including references to alpha-numeric map for Site activities.

-Formwork and rebar installation in A1- A4, B1- B4, D2- D4, E2- E4, and F2- F4.

2. Locations of work and quantities of material imported and exported from the Site.

-No loads of non-hazardous soil were exported from the Site today to Clean Earth of Bethlehem in Bethlehem, PA.

-No loads were exported off the site today.

-No materials were imported to the site today.

3. A summary of any and all complaints with relevant details (names, phone numbers).

-No complaints.

4. A summary of CAMP findings (air and dust readings).

-No elevated PID or dust readings were identified.

5. An explanation of notable Site conditions.

-Today's work was overseen by Thomas Brown of CA RICH. No conditions of note were observed.

6. Planned Activities

-Continue formwork and rebar installation for Building B first through third floors.

-Continue formwork and rebar installation for Building C first floor.

-Continue excavating soil for Building H.

Photo Log

Photo 1- View of formwork and rebar installation in D3, D4, E3, and E4.



Photo 2- View of formwork and rebar installation in A3, A4, B3, and B4.



Photo 3- View of formwork and rebar installation in A2, A3, B2, and B3.





Daily Report for February 10, 2020

**Far Rockaway Project
20-02 Mott Avenue
Far Rockaway, NY
BCP #C241224**

1. An update of progress made during the reporting day including references to alpha-numeric map for Site activities.

- Formwork and rebar installation in A1- A4, B1- B4, D2- D4, E2- E4, and F2- F4.
- Waterproofing between buildings B and C in grids B3 and C3.

2. Locations of work and quantities of material imported and exported from the Site.

- No loads of non-hazardous soil were exported from the Site today to Clean Earth of Bethlehem in Bethlehem, PA.
- No loads were exported off the site today.
- No materials were imported to the site today.

3. A summary of any and all complaints with relevant details (names, phone numbers).

- No complaints.

4. A summary of CAMP findings (air and dust readings).

- No elevated PID or dust readings were identified.

5. An explanation of notable Site conditions.

- Today's work was overseen by Thomas Brown of CA RICH. No conditions of note were observed.

6. Planned Activities

- Continue formwork and rebar installation for Building B first through third floors.
- Continue formwork and rebar installation for Building C first floor.
- Continue excavating soil for Building H.

Photo Log

Photo 1- View of formwork and rebar installation in 2, C3, D2, D3, and E2.



Photo 2- View of formwork and rebar installation in A3, A4, B3, and B4.



View of waterproofing installation in grids B3 and C3.





Daily Report for February 11, 2020

**Far Rockaway Project
20-02 Mott Avenue
Far Rockaway, NY
BCP #C241224**

1. An update of progress made during the reporting day including references to alpha-numeric map for Site activities.

- Formwork and rebar installation in A1- A4, B1- B4, D2- D4, E2- E4, and F2- F4.
- Waterproofing between buildings B and C in grids B3 and C3.

2. Locations of work and quantities of material imported and exported from the Site.

- No loads were exported off the site today.
- No materials were imported to the site today.

3. A summary of any and all complaints with relevant details (names, phone numbers).

- No complaints.

4. A summary of CAMP findings (air and dust readings).

- No elevated PID or dust readings were identified.

5. An explanation of notable Site conditions.

- Today's work was overseen by Thomas Brown of CA RICH. No conditions of note were observed.

6. Planned Activities

- Continue formwork and rebar installation for Building B first through third floors.
- Continue formwork and rebar installation for Building C first floor.
- Continue excavating soil for Building H.

Photo Log

Photo 1- View of formwork and rebar installation in C2, C3, C4, D2, and D3.



Photo 2- View of formwork rebar, and installation of concrete in grids C3, C4, D3, D4, and E4.



View of rebar and framework installation in grids B1, B2, A1, and A2.





Daily Report for February 12, 2020

**Far Rockaway Project
20-02 Mott Avenue
Far Rockaway, NY
BCP #C241224**

1. An update of progress made during the reporting day including references to alpha-numeric map for Site activities.

- Formwork and rebar installation in A1- A4, B1- B4, D2- D4, E2- E4, and F2- F4.
- Waterproofing between buildings B and C in grids B3 and C3.
- Broke up concrete in C6.

2. Locations of work and quantities of material imported and exported from the Site.

- Exported 5 loads of concrete and debris to the Prospect Park facility.
- No materials were imported to the site today.

3. A summary of any and all complaints with relevant details (names, phone numbers).

- No complaints.

4. A summary of CAMP findings (air and dust readings).

- No elevated PID or dust readings were identified.

5. An explanation of notable Site conditions.

- Today's work was overseen by David Klein of CA RICH. No conditions of note were observed.

6. Planned Activities

- Continue formwork and rebar installation for Building B first through third floors.
- Continue formwork and rebar installation for Building C first floor.
- Continue excavating soil for Building H.

Photo Log

Photo 1- View of formwork and rebar installation in A3, A4, B3, and B4.



Photo 2- View of bituthene installation in B3.



View of rebar
and breaking
up concrete in
D6.





Daily Report for February 13, 2020

**Far Rockaway Project
20-02 Mott Avenue
Far Rockaway, NY
BCP #C241224**

1. An update of progress made during the reporting day including references to alpha-numeric map for Site activities.

- Formwork and rebar installation in A1- A4, B1- B4, D2- D4, E2- E4, and F2- F4.
- Waterproofing between buildings B and C in grids B3 and C3.
- Broke up concrete in D6.

2. Locations of work and quantities of material imported and exported from the Site.

- 33 loads of non-hazardous soil were exported from the Site today to Clean Earth of Bethlehem in Bethlehem, PA from grid C6 (0-7) and D6 (0-7).
- Exported 6 loads of concrete and debris to the Prospect Park facility.
- No materials were imported to the site today.

3. A summary of any and all complaints with relevant details (names, phone numbers).

- No complaints.

4. A summary of CAMP findings (air and dust readings).

- No elevated PID or dust readings were identified.

5. An explanation of notable Site conditions.

- Today's work was overseen by Thomas Brown of CA RICH. No conditions of note were observed.

6. Planned Activities

- Continue formwork and rebar installation for Building B first through third floors.
- Continue formwork and rebar installation for Building C first floor.
- Continue excavating soil for Building H.

Photo Log

Photo 1- View of formwork and rebar installation in A3, A4, B3, and B4.



Photo 2- View of loading out soil in D6.



View of rebar
and breaking
up concrete in
D6.





Daily Report for February 14, 2020

**Far Rockaway Project
20-02 Mott Avenue
Far Rockaway, NY
BCP #C241224**

1. An update of progress made during the reporting day including references to alpha-numeric map for Site activities.

- Formwork and rebar installation in A1- A4, B1- B4, D2- D4, E2- E4, and F2- F4.
- Broke up concrete in D6.

2. Locations of work and quantities of material imported and exported from the Site.

- 28 loads of non-hazardous soil were exported from the Site today to Clean Earth of Bethlehem in Bethlehem, PA from grid C6 (0-7) and D6 (0-7).
- Exported 3 loads of concrete and debris to the Russo facility in Rosedale, NY.
- No materials were imported to the site today.

3. A summary of any and all complaints with relevant details (names, phone numbers).

- No complaints.

4. A summary of CAMP findings (air and dust readings).

- No elevated PID or dust readings were identified.

5. An explanation of notable Site conditions.

- Today's work was overseen by David Klein of CA RICH. No conditions of note were observed.

6. Planned Activities

- Continue formwork and rebar installation for Building B first through third floors.
- Continue formwork and rebar installation for Building C first floor.
- Continue excavating soil for Building H.

Photo Log

Photo 1- View of formwork and rebar installation in A3, A4, B3, and B4.



Photo 2- View of loading out soil in D6.



Photo 3- View of formwork and rebar installation in D3, D4, E3, and E4.





Daily Report for February 17, 2020

**Far Rockaway Project
20-02 Mott Avenue
Far Rockaway, NY
BCP #C241224**

1. An update of progress made during the reporting day including references to alpha-numeric map for Site activities.

-Formwork and rebar installation in A1- A4, B1- B4, D2- D4, E2- E4, and F2- F4.
-Endpoint samples EP-59 through EP-68 were collected and sent off to American Analytical Laboratories for analysis.

2. Locations of work and quantities of material imported and exported from the Site.

-36 loads of non-hazardous soil were exported from the Site today to Clean Earth of Bethlehem in Bethlehem, PA from grid C6 (0-7) and D6 (0-7).
-Exported 2 loads of asphalt to the Russo facility in Rosedale, NY.
-No materials were imported to the site today.

3. A summary of any and all complaints with relevant details (names, phone numbers).

-No complaints.

4. A summary of CAMP findings (air and dust readings).

-No elevated PID or dust readings were identified.

5. An explanation of notable Site conditions.

-Today's work was overseen by David Klein of CA RICH. No conditions of note were observed.

6. Planned Activities

-Continue formwork and rebar installation for Building B first through third floors.
-Continue formwork and rebar installation for Building C first floor.
-Continue excavating soil for Building H.

Photo Log

Photo 1- View of formwork and rebar installation in A3, A4, B3, and B4.



Photo 2- View of loading out soil in D6.



Photo 3- View
of excavation in
C5, C6, D5,
and D6.





Daily Report for February 18, 2020

**Far Rockaway Project
20-02 Mott Avenue
Far Rockaway, NY
BCP #C241224**

1. An update of progress made during the reporting day including references to alpha-numeric map for Site activities.

- Formwork and rebar installation in A1- A4, B1- B4, D2- D4, E2- E4, and F2- F4.
- Poured concrete in D3, D4, E3, and E4.

2. Locations of work and quantities of material imported and exported from the Site.

- 37 loads of non-hazardous soil were exported from the Site today to Clean Earth of Bethlehem in Bethlehem, PA from grid C6 (0-7) and D6 (0-7).
- 15 loads of non-hazardous soil were exported from the Site today under the Clean Soil Bank transfer #20CCSB151 to 97-01 Northern Boulevard in Queens, NY from grids D3, D4, E3, E4 (7'-15').
- Exported 5 loads of concrete and debris to the Russo facility in Rosedale, NY.
- No materials were imported to the site today.

3. A summary of any and all complaints with relevant details (names, phone numbers).

- No complaints.

4. A summary of CAMP findings (air and dust readings).

- No elevated PID or dust readings were identified.

5. An explanation of notable Site conditions.

- Today's work was overseen by David Klein of CA RICH. No conditions of note were observed.

6. Planned Activities

- Continue formwork and rebar installation for Building B first through third floors.
- Continue formwork and rebar installation for Building C first floor.
- Continue excavating soil for Building H.

Photo Log

Photo 1- View of pouring concrete in D3, D4, E3, and E4.



Photo 2- View of loading out soil in D6.



Photo 3- View
of loading out
of soil to the
97-01 Northern
Boulevard site
under
#20CCSB151





Daily Report for February 19, 2020

**Far Rockaway Project
20-02 Mott Avenue
Far Rockaway, NY
BCP #C241224**

1. An update of progress made during the reporting day including references to alpha-numeric map for Site activities.

- Formwork and rebar installation in A1- A4, B1- B4, D2- D4, E2- E4, and F2- F4.
- Poured concrete in A3 and A4.

2. Locations of work and quantities of material imported and exported from the Site.

- 29 loads of non-hazardous soil were exported from the Site today to Clean Earth of Bethlehem in Bethlehem, PA from grid C6 (0-7), C7 (0-7) and D6 (0-7).
- 20 loads of non-hazardous soil were exported from the Site today under the Clean Soil Bank transfer #20CCSB151 to 97-01 Northern Boulevard in Queens, NY from grids D3, D4, E3, E4 (7'-15').
- Exported 6 loads of concrete and debris to the Russo facility in Rosedale, NY.
- Exported 3 loads of asphalt to the Tilcon facility in West Nyack, NY.
- No materials were imported to the site today.

3. A summary of any and all complaints with relevant details (names, phone numbers).

- No complaints.

4. A summary of CAMP findings (air and dust readings).

- No elevated PID or dust readings were identified.

5. An explanation of notable Site conditions.

- Today's work was overseen by Thomas Brown of CA RICH. No conditions of note were observed.

6. Planned Activities

- Continue formwork and rebar installation for Building B first through third floors.
- Continue formwork and rebar installation for Building C first floor.
- Continue excavating soil for Building H.

Photo Log

Photo 1- View
of building B
grids C2, C3,
and C4.



Photo 2- View
of building C
grids B1 and
B2.



Photo 3- View
of building C
grids A3, A4,
B3, and B4.





Daily Report for February 20, 2020

**Far Rockaway Project
20-02 Mott Avenue
Far Rockaway, NY
BCP #C241224**

1. An update of progress made during the reporting day including references to alpha-numeric map for Site activities.

- Formwork and rebar installation in A1- A4, B1- B4, D2- D4, E2- E4, and F2- F4.
- Poured concrete in A3 and A4.

2. Locations of work and quantities of material imported and exported from the Site.

- 42 loads of non-hazardous soil were exported from the Site today to Clean Earth of Bethlehem in Bethlehem, PA from grid C6 (0-7), C7 (0-7) and C8 (0-7).
- No loads of non-hazardous soil were exported from the Site today under the Clean Soil Bank transfer #20CCSB151 to 97-01 Northern Boulevard in Queens, NY from grids D3, D4, E3, E4 (7'-15').
- Exported 6 loads of concrete and debris to the Russo facility in Rosedale, NY.
- Exported 1 loads of asphalt to the Tilcon facility in West Nyack, NY.
- No materials were imported to the site today.

3. A summary of any and all complaints with relevant details (names, phone numbers).

- No complaints.

4. A summary of CAMP findings (air and dust readings).

- No elevated PID or dust readings were identified.

5. An explanation of notable Site conditions.

- Today's work was overseen by Thomas Brown of CA RICH. No conditions of note were observed.

6. Planned Activities

- Continue formwork and rebar installation for Building B first through third floors.
- Continue formwork and rebar installation for Building C first floor.
- Continue excavating soil for Building H.

Photo Log

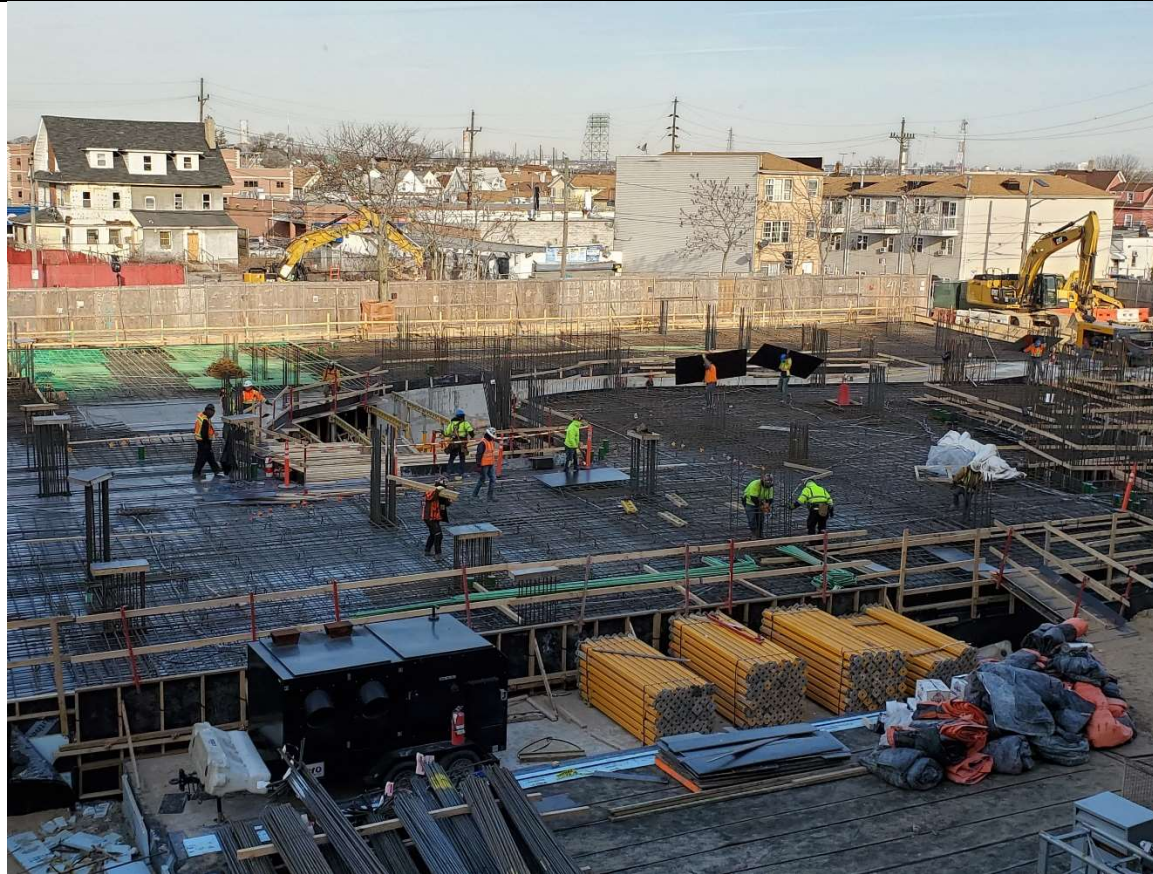
Photo 1- View of soil removal from building H and view of building B grids C4, D4, and E4.



Photo 2- View
of building C
grids A1, A2,
B1 and B2.



Photo 3- View
of building C
grids A3, A4,
B3, and B4.





Daily Report for February 21, 2020

**Far Rockaway Project
20-02 Mott Avenue
Far Rockaway, NY
BCP #C241224**

1. An update of progress made during the reporting day including references to alpha-numeric map for Site activities.

- Formwork and rebar installation in A1- A4, B1- B4, D2- D4, E2- E4, and F2- F4.
- Poured concrete in A3, A4, B3, and B4.

2. Locations of work and quantities of material imported and exported from the Site.

- 1 load of non-hazardous soil were exported from the Site today to Clean Earth of Bethlehem in Bethlehem, PA from grid C7 (0-7).
- No loads of non-hazardous soil were exported from the Site today under the Clean Soil Bank transfer #20CCSB151 to 97-01 Northern Boulevard in Queens, NY from grids D3, D4, E3, E4 (7'-15').
- Exported 1 load of concrete and debris to the Russo facility in Rosedale, NY.
- Exported 1 load of asphalt to the Tilcon facility in West Nyack, NY.
- No materials were imported to the site today.

3. A summary of any and all complaints with relevant details (names, phone numbers).

- No complaints.

4. A summary of CAMP findings (air and dust readings).

- No elevated PID or dust readings were identified.

5. An explanation of notable Site conditions.

- Today's work was overseen by Thomas Brown of CA RICH. No conditions of note were observed.

6. Planned Activities

- Continue formwork and rebar installation for Building B first through third floors.
- Continue formwork and rebar installation for Building C first floor.
- Continue excavating soil for Building H.

Photo Log

Photo 1- View of building B grids C4, C3, and C2.



Photo 2- View
of pouring
concrete at
Building C
grids A4, A3.



Photo 3- View
of pouring
concrete at
building C grids
A3, A4, B3,
and B4.





Daily Report for February 24, 2020

**Far Rockaway Project
20-02 Mott Avenue
Far Rockaway, NY
BCP #C241224**

1. An update of progress made during the reporting day including references to alpha-numeric map for Site activities.

-Formwork and rebar installation in A1- A4, B1- B4, D2- D4, E2- E4, and F2- F4.

2. Locations of work and quantities of material imported and exported from the Site.

-37 load of non-hazardous soil were exported from the Site today to Clean Earth of Bethlehem in Bethlehem, PA from grid C7 (0-7).

-No loads of non-hazardous soil were exported from the Site today under the Clean Soil Bank transfer #20CCSB151 to 97-01 Northern Boulevard in Queens, NY from grids D3, D4, E3, E4 (7'-15').

-Exported no loads of concrete and debris to the Russo facility in Rosedale, NY.

-Exported no loads of asphalt to the Tilcon facility in West Nyack, NY.

-No materials were imported to the site today.

3. A summary of any and all complaints with relevant details (names, phone numbers).

-No complaints.

4. A summary of CAMP findings (air and dust readings).

-No elevated PID or dust readings were identified.

5. An explanation of notable Site conditions.

-Today's work was overseen by Thomas Brown of CA RICH. No conditions of note were observed.

6. Planned Activities

-Continue formwork and rebar installation for Building B first through third floors.

-Continue formwork and rebar installation for Building C first floor.

-Continue excavating soil for Building H.

Photo Log

Photo 1- View
of building B
grids C4, C3,
C2, D4 and E4.



Photo 2- View
of concrete at
Building C
grids A4, A3,
B4, and B3.



Photo 3- View
of soil removal
building H1/H2.





Daily Report for February 25, 2020

**Far Rockaway Project
20-02 Mott Avenue
Far Rockaway, NY
BCP #C241224**

1. An update of progress made during the reporting day including references to alpha-numeric map for Site activities.

-Formwork and rebar installation in A1- A4, B1- B4, D2- D4, E2- E4, and F2- F4.

2. Locations of work and quantities of material imported and exported from the Site.

-45 load of non-hazardous soil were exported from the Site today to Clean Earth of Bethlehem in Bethlehem, PA from grid C7 (0-7).

-No loads of non-hazardous soil were exported from the Site today under the Clean Soil Bank transfer #20CCSB151 to 97-01 Northern Boulevard in Queens, NY from grids D3, D4, E3, E4 (7'-15').

-Exported no loads of concrete and debris to the Russo facility in Rosedale, NY.

-Exported no loads of asphalt to the Tilcon facility in West Nyack, NY.

-No materials were imported to the site today.

3. A summary of any and all complaints with relevant details (names, phone numbers).

-No complaints.

4. A summary of CAMP findings (air and dust readings).

-No elevated PID or dust readings were identified.

5. An explanation of notable Site conditions.

-Today's work was overseen by Thomas Brown of CA RICH. No conditions of note were observed.

6. Planned Activities

-Continue formwork and rebar installation for Building B first through third floors.

-Continue formwork and rebar installation for Building C first floor.

-Continue excavating soil for Building H.

Photo Log

Photo 1- View of building B grids C3, C2, F2 and E2.



Photo 2- View
of concrete at
Building C
looking south.



Photo 3- View
of second floor
of building C
from the 7th
floor of building
B.





Daily Report for February 26, 2020

**Far Rockaway Project
20-02 Mott Avenue
Far Rockaway, NY
BCP #C241224**

1. An update of progress made during the reporting day including references to alpha-numeric map for Site activities.

- Formwork and rebar installation in A1- A4, B1- B4, D2- D4, E2- E4, and F2- F4.
- Sampled Endpoints EP-11, EP-69, EP-70, EP-71, EP-72, EP-73, and EP-74.

2. Locations of work and quantities of material imported and exported from the Site.

- No loads of non-hazardous soil was exported from the Site today to Clean Earth of Bethlehem in Bethlehem, PA from grid C7 (0-7).
- 4 loads of non-hazardous soil were exported from the Site today under the Clean Soil Bank transfer #20CCSB151 to 97-01 Northern Boulevard in Queens, NY from grids D3, D4, E3, E4 (7'-15').
- Exported 20 loads of concrete and debris to the Russo facility in Rosedale, NY.
- Exported no loads of asphalt to the Tilcon facility in West Nyack, NY.
- No materials were imported to the site today.

3. A summary of any and all complaints with relevant details (names, phone numbers).

- No complaints.

4. A summary of CAMP findings (air and dust readings).

- No elevated PID or dust readings were identified.

5. An explanation of notable Site conditions.

- Today's work was overseen by Thomas Brown of CA RICH. No conditions of note were observed.

6. Planned Activities

- Continue formwork and rebar installation for Building B first through third floors.
- Continue formwork and rebar installation for Building C first floor.
- Continue excavating soil for Building H.

Photo Log

Photo 1- View
of SOE drilling
at building
H1/H2.



Photo 2- View
of southern end
of Building C.



Photo 3- View
of northern end
of building B.





Daily Report for February 27, 2020

**Far Rockaway Project
20-02 Mott Avenue
Far Rockaway, NY
BCP #C241224**

1. An update of progress made during the reporting day including references to alpha-numeric map for Site activities.

-Formwork and rebar installation in A1- A4, B1- B4, D2- D4, E2- E4, and F2- F4.

2. Locations of work and quantities of material imported and exported from the Site.

-11 loads of non-hazardous soil was exported from the Site today to Clean Earth of Bethlehem in Bethlehem, PA from grid C7 (0-7).

-No loads of non-hazardous soil were exported from the Site today under the Clean Soil Bank transfer #20CCSB151 to 97-01 Northern Boulevard in Queens, NY from grids D3, D4, E3, E4 (7'-15').

-Exported 1 loads of concrete and debris to the Russo facility in Rosedale, NY.

-Exported no loads of asphalt to the Tilcon facility in West Nyack, NY.

-No materials were imported to the site today.

3. A summary of any and all complaints with relevant details (names, phone numbers).

-No complaints.

4. A summary of CAMP findings (air and dust readings).

-No elevated PID or dust readings were identified.

5. An explanation of notable Site conditions.

-Today's work was overseen by Thomas Brown of CA RICH. No conditions of note were observed.

6. Planned Activities

-Continue formwork and rebar installation for Building B first through third floors.

-Continue formwork and rebar installation for Building C first floor.

-Continue excavating soil for Building H.

Photo Log

Photo 1- View
of concrete
pouring on 7th
floor of building
B.



Photo 2- View
of Building C
looking west.



Photo 3- View
of building
H1/H2
excavation
looking north.





Daily Report for February 28, 2020

**Far Rockaway Project
20-02 Mott Avenue
Far Rockaway, NY
BCP #C241224**

1. An update of progress made during the reporting day including references to alpha-numeric map for Site activities.

- Formwork and rebar installation in A1- A4, B1- B4, D2- D4, E2- E4, and F2- F4.
- SOE installation in E5.

2. Locations of work and quantities of material imported and exported from the Site.

- Exported 6 loads of concrete and debris to the Mount Materials LLC facility in Fairless Hills, PA.
- No materials were imported to the site today.

3. A summary of any and all complaints with relevant details (names, phone numbers).

- No complaints.

4. A summary of CAMP findings (air and dust readings).

- No elevated PID or dust readings were identified.

5. An explanation of notable Site conditions.

- Today's work was overseen by Thomas Brown of CA RICH. No conditions of note were observed.

6. Planned Activities

- Continue formwork and rebar installation for Building B first through third floors.
- Continue formwork and rebar installation for Building C first floor.
- Continue excavating soil for Building H.

Photo Log

Photo 1- View
of building B
Grid D1.



Photo 2- View
of Building C
looking south.



Photo 3- View
of SOE
installation at
building H1/H2
excavation grid
E5.

