



Daily Report for November 3, 2020

**Far Rockaway Project
20-02 Mott Avenue
Far Rockaway, NY
BCP #C241224**

1. An update of progress made during the reporting day including references to alpha-numeric map for Site activities.

- Utility, rebar, and formwork installation in A1- A4, B1- B5, C5-C8, D1- D7, E2- E4, and F2-F4.
- Excavated soil in C5 and D5.
- Backfilled soil in A5, D5, and E5.
- Collected endpoint sample EP- 86(7) in D5.

2. Locations of work and quantities of material imported and exported from the Site.

- 6 loads of nonhazardous soil from grids C5 (0-7) were exported to the Posillico Facility in Farmingdale, NY
- No materials were imported to the site today.

3. A summary of any and all complaints with relevant details (names, phone numbers).

- No complaints.

4. A summary of CAMP findings (air and dust readings).

- No elevated PID or dust readings were identified.

5. An explanation of notable Site conditions.

- Today's work was overseen by David Klein of CA RICH. No conditions of note were observed.

6. Planned Activities

- Continue formwork and rebar installation for Building B.
- Continue formwork and rebar installation for Building C.
- Continue formwork and rebar installation for Building H.

Photo Log

Photo 1- View of loading of soil for export offsite.



Photo 2- View of utility installation in C5 and D5.



Photo 3- View of backfilling with clean fill in A5.





Daily Report for November 4, 2020

**Far Rockaway Project
20-02 Mott Avenue
Far Rockaway, NY
BCP #C241224**

1. An update of progress made during the reporting day including references to alpha-numeric map for Site activities.

- Utility, rebar, and formwork installation in A1- A4, B1- B5, C5-C8, D1- D7, E2- E4, and F2-F4.
- Excavated soil in C5 and D5.
- Backfilled soil in D5 and E5.
- Collected endpoint sample EP-87(7).

2. Locations of work and quantities of material imported and exported from the Site.

- No materials were exported from the site today.
- No materials were imported to the site today.

3. A summary of any and all complaints with relevant details (names, phone numbers).

- No complaints.

4. A summary of CAMP findings (air and dust readings).

- No elevated PID or dust readings were identified.

5. An explanation of notable Site conditions.

- Today's work was overseen by David Klein of CA RICH. No conditions of note were observed.

6. Planned Activities

- Continue formwork and rebar installation for Building B.
- Continue formwork and rebar installation for Building C.
- Continue formwork and rebar installation for Building H.

Photo Log

Photo 1- View of utility installation in C5 and D5.



Photo 2- View of utility installation in C5 and D5.



Photo 3- View of utility and formwork installation in A3, A4, B3 and B4.





Daily Report for November 5, 2020

**Far Rockaway Project
20-02 Mott Avenue
Far Rockaway, NY
BCP #C241224**

1. An update of progress made during the reporting day including references to alpha-numeric map for Site activities.

- Utility, rebar, and formwork installation in A1- A4, B1- B5, C5-C8, D1- D7, E2- E4, and F2-F4.
- Excavated soil in C5 and D5.
- Backfilled soil in D5.

2. Locations of work and quantities of material imported and exported from the Site.

- No materials were exported from the site today.
- No materials were imported to the site today.

3. A summary of any and all complaints with relevant details (names, phone numbers).

- No complaints.

4. A summary of CAMP findings (air and dust readings).

- No elevated PID or dust readings were identified.

5. An explanation of notable Site conditions.

- Today's work was overseen by David Klein of CA RICH. No conditions of note were observed.

6. Planned Activities

- Continue formwork and rebar installation for Building B.
- Continue formwork and rebar installation for Building C.
- Continue formwork and rebar installation for Building H.

Photo Log

Photo 1- View of utility installation and excavation in C5.



Photo 2- View of utility installation in C5 and D5.



Photo 3- View of utility and formwork installation in C6-C8.





Daily Report for November 6, 2020

**Far Rockaway Project
20-02 Mott Avenue
Far Rockaway, NY
BCP #C241224**

1. An update of progress made during the reporting day including references to alpha-numeric map for Site activities.

- Utility, rebar, and formwork installation in A1- A4, B1- B5, C5-C8, D1- D7, E2- E4, and F2-F4.
- Excavated soil in C5 and D5.
- Backfilled soil in D5.

2. Locations of work and quantities of material imported and exported from the Site.

- 9 loads of nonhazardous soil from grids D5 (0-7) were exported to the Posillico Facility in Farmingdale, NY
- No materials were imported to the site today.

3. A summary of any and all complaints with relevant details (names, phone numbers).

- No complaints.

4. A summary of CAMP findings (air and dust readings).

- No elevated PID or dust readings were identified.

5. An explanation of notable Site conditions.

- Today's work was overseen by David Klein of CA RICH. No conditions of note were observed.

6. Planned Activities

- Continue formwork and rebar installation for Building B.
- Continue formwork and rebar installation for Building C.
- Continue formwork and rebar installation for Building H.

Photo Log

Photo 1- View of loading out of soil for export offsite.



Photo 2- View of utility installation in C5 and D5.



Photo 3- View of utility installation in C5 and D5.





Daily Report for November 10, 2020

**Far Rockaway Project
20-02 Mott Avenue
Far Rockaway, NY
BCP #C241224**

1. An update of progress made during the reporting day including references to alpha-numeric map for Site activities.

- Utility, rebar, and formwork installation in A1- A4, B1- B5, C5-C8, D1- D7, E2- E4, and F2-F4.
- Excavated soil in C6.
- Backfilled soil in C5 and D5.

2. Locations of work and quantities of material imported and exported from the Site.

- 7 loads of nonhazardous soil from grids D5 (0-7) were exported to the Posillico Facility in Farmingdale, NY.
- 10 loads (~250 tons) of approved clean fill were imported to the site today from the P Park facility in Prospect Park, NJ.

3. A summary of any and all complaints with relevant details (names, phone numbers).

- No complaints.

4. A summary of CAMP findings (air and dust readings).

- No elevated PID or dust readings were identified.

5. An explanation of notable Site conditions.

- Today's work was overseen by David Klein of CA RICH. No conditions of note were observed.

6. Planned Activities

- Continue formwork and rebar installation for Building B.
- Continue formwork and rebar installation for Building C.
- Continue formwork and rebar installation for Building H.

Photo Log

Photo 1- View of loading out of soil for export offsite.



Photo 2- View of backfilling and compacting clean fill in C5 and D5.



Photo 3- View of utility installation in C6.





Daily Report for November 11, 2020

**Far Rockaway Project
20-02 Mott Avenue
Far Rockaway, NY
BCP #C241224**

1. An update of progress made during the reporting day including references to alpha-numeric map for Site activities.

- Utility, rebar, and formwork installation in A1- A4, B1- B5, C5-C8, D1- D7, E2- E4, and F2-F4.
- Excavated soil in C5 and C6.
- Backfilled soil in C5 and D5.
- Utility installation in C5 and C6.

2. Locations of work and quantities of material imported and exported from the Site.

- 6 loads of nonhazardous soil from grids D5 (0-7) were exported to the Posillico Facility in Farmingdale, NY.
- 11 loads (~275 tons) of approved clean fill were imported to the site today from the P Park facility in Prospect Park, NJ.

3. A summary of any and all complaints with relevant details (names, phone numbers).

- No complaints.

4. A summary of CAMP findings (air and dust readings).

- No elevated PID or dust readings were identified.

5. An explanation of notable Site conditions.

- Today's work was overseen by David Klein of CA RICH. No conditions of note were observed.

6. Planned Activities

- Continue formwork and rebar installation for Building B.
- Continue formwork and rebar installation for Building C.
- Continue formwork and rebar installation for Building H.

Photo Log

Photo 1- View of loading out of soil for export offsite.



Photo 2- View of backfilled and compacted clean fill in C5 and D5.



Photo 3- View of utility installation in C5 and C6.





Daily Report for November 12, 2020

**Far Rockaway Project
20-02 Mott Avenue
Far Rockaway, NY
BCP #C241224**

1. An update of progress made during the reporting day including references to alpha-numeric map for Site activities.

-Utility, rebar, and formwork installation in A1- A4, B1- B4, C5-C8, D1- D7, E2- E4, and F2-F4.

2. Locations of work and quantities of material imported and exported from the Site.

-3 loads of nonhazardous soil from grids D5 (0-7) were exported to the Posillico Facility in Farmingdale, NY.

-No material was imported to the site today.

3. A summary of any and all complaints with relevant details (names, phone numbers).

-No complaints.

4. A summary of CAMP findings (air and dust readings).

-No elevated PID or dust readings were identified.

5. An explanation of notable Site conditions.

-Today's work was overseen by David Klein of CA RICH. No conditions of note were observed.

6. Planned Activities

-Continue formwork and rebar installation for Building B.

-Continue formwork and rebar installation for Building C.

-Continue formwork and rebar installation for Building H.

Photo Log

Photo 1- View of loading out of soil for export offsite.



Photo 2- View of utility and formwork installation in C6-C8.



Photo 3- View of utility and formwork installation in A3, A4, B3, and B4.





Daily Report for November 13, 2020

**Far Rockaway Project
20-02 Mott Avenue
Far Rockaway, NY
BCP #C241224**

1. An update of progress made during the reporting day including references to alpha-numeric map for Site activities.

- Utility, rebar, and formwork installation in A1- A4, B1- B4, C5-C8, D1- D7, E2- E4, and F2-F4.
- Excavated soil in C6-C8.

2. Locations of work and quantities of material imported and exported from the Site.

- No material was exported from the site today.
- No material was imported to the site today.

3. A summary of any and all complaints with relevant details (names, phone numbers).

- No complaints.

4. A summary of CAMP findings (air and dust readings).

- No elevated PID or dust readings were identified.

5. An explanation of notable Site conditions.

- Today's work was overseen by David Klein of CA RICH. No conditions of note were observed.

6. Planned Activities

- Continue formwork and rebar installation for Building B.
- Continue formwork and rebar installation for Building C.
- Continue formwork and rebar installation for Building H.

Photo Log

Photo 1- View of utility and formwork installation in A3, A4, B3, and B4.



Photo 2- View of utility installation in C6-C8.



Photo 3- View of utility installation in C6-C8.





Daily Report for November 16, 2020

**Far Rockaway Project
20-02 Mott Avenue
Far Rockaway, NY
BCP #C241224**

1. An update of progress made during the reporting day including references to alpha-numeric map for Site activities.

- Utility, rebar, and formwork installation in A1- A4, B1- B4, C5-C8, D1- D7, E2- E4, and F2-F4.
- Excavated soil in C6-C8.
- Collected Endpoint sample EP-88(7).

2. Locations of work and quantities of material imported and exported from the Site.

- 6 loads of nonhazardous soil from grids D5 (0-7) were exported to the Posillico Facility in Farmingdale, NY.
- No material was imported to the site today.

3. A summary of any and all complaints with relevant details (names, phone numbers).

- No complaints.

4. A summary of CAMP findings (air and dust readings).

- No elevated PID or dust readings were identified.

5. An explanation of notable Site conditions.

- Today's work was overseen by David Klein of CA RICH. No conditions of note were observed.

6. Planned Activities

- Continue formwork and rebar installation for Building B.
- Continue formwork and rebar installation for Building C.
- Continue formwork and rebar installation for Building H.

Photo Log

Photo 1- View of utility and formwork installation in A3, A4, B3, and B4.



Photo 2- View of utility installation in C6-C8.



Photo 3- View of utility and formwork installation and in A3, A4, B3, and B4.





Daily Report for November 17, 2020

**Far Rockaway Project
20-02 Mott Avenue
Far Rockaway, NY
BCP #C241224**

1. An update of progress made during the reporting day including references to alpha-numeric map for Site activities.

- Utility, rebar, and formwork installation in A1- A4, B1- B4, C5-C8, D1- D7, E2- E4, and F2-F4.
- Excavated soil in C6-C8.

2. Locations of work and quantities of material imported and exported from the Site.

- 15 loads of nonhazardous soil from grids C6 (0-7) were exported to the Posillico Facility in Farmingdale, NY.
- No material was imported to the site today.

3. A summary of any and all complaints with relevant details (names, phone numbers).

- No complaints.

4. A summary of CAMP findings (air and dust readings).

- No elevated PID or dust readings were identified.

5. An explanation of notable Site conditions.

- Today's work was overseen by David Klein of CA RICH. No conditions of note were observed.

6. Planned Activities

- Continue formwork and rebar installation for Building B.
- Continue formwork and rebar installation for Building C.
- Continue formwork and rebar installation for Building H.

Photo Log

Photo 1- View of utility and formwork installation in A3, A4, B3, and B4.



Photo 2- View of utility installation in C6-C7.



Photo 3- View of exporting soil offsite.





Daily Report for November 18, 2020

**Far Rockaway Project
20-02 Mott Avenue
Far Rockaway, NY
BCP #C241224**

1. An update of progress made during the reporting day including references to alpha-numeric map for Site activities.

- Utility, rebar, and formwork installation in A1- A4, B1- B4, C5-C8, D1- D7, E2- E4, and F2-F4.
- Excavated soil in C6-C8.

2. Locations of work and quantities of material imported and exported from the Site.

- 18 loads of nonhazardous soil from grids C6 and C7 (0-7) were exported to the Posillico Facility in Farmingdale, NY.
- No material was imported to the site today.

3. A summary of any and all complaints with relevant details (names, phone numbers).

- No complaints.

4. A summary of CAMP findings (air and dust readings).

- No elevated PID or dust readings were identified.

5. An explanation of notable Site conditions.

- Today's work was overseen by David Klein of CA RICH. No conditions of note were observed.

6. Planned Activities

- Continue formwork and rebar installation for Building B.
- Continue formwork and rebar installation for Building C.
- Continue formwork and rebar installation for Building H.

Photo Log

Photo 1- View of utility installation in C6-C7.



Photo 2- View of utility installation in C6-C7.



Photo 3- View of exporting soil offsite.





Daily Report for November 19, 2020

**Far Rockaway Project
20-02 Mott Avenue
Far Rockaway, NY
BCP #C241224**

1. An update of progress made during the reporting day including references to alpha-numeric map for Site activities.

- Utility, rebar, and formwork installation in A1- A4, B1- B4, C5-C8, D1- D7, E2- E4, and F2-F4.
- Excavated soil in C6-C8.

2. Locations of work and quantities of material imported and exported from the Site.

- 6 loads of nonhazardous soil from grids C6 and C7 (0-7) were exported to the Posillico Facility in Farmingdale, NY.
- No material was imported to the site today.

3. A summary of any and all complaints with relevant details (names, phone numbers).

- No complaints.

4. A summary of CAMP findings (air and dust readings).

- No elevated PID or dust readings were identified.

5. An explanation of notable Site conditions.

- Today's work was overseen by David Klein of CA RICH. No conditions of note were observed.

6. Planned Activities

- Continue formwork and rebar installation for Building B.
- Continue formwork and rebar installation for Building C.
- Continue formwork and rebar installation for Building H.

Photo Log

Photo 1- View of utility installation in C6-C7.



Photo 2- View of utility and formwork installation in D4, D5, E4, and E5.



Photo 3- View of utility and formwork installation in A3, A4, B3, and B4.





Daily Report for November 20, 2020

**Far Rockaway Project
20-02 Mott Avenue
Far Rockaway, NY
BCP #C241224**

1. An update of progress made during the reporting day including references to alpha-numeric map for Site activities.

- Utility, rebar, and formwork installation in A1- A4, B1- B4, C5-C8, D1- D7, E2- E4, and F2-F4.
- Excavated soil in C6-C8.

2. Locations of work and quantities of material imported and exported from the Site.

- 15 loads of nonhazardous soil from grids C6 and C7 (0-7) were exported to the Posillico Facility in Farmingdale, NY.
- No material was imported to the site today.

3. A summary of any and all complaints with relevant details (names, phone numbers).

- No complaints.

4. A summary of CAMP findings (air and dust readings).

- No elevated PID or dust readings were identified.

5. An explanation of notable Site conditions.

- Today's work was overseen by David Klein of CA RICH. No conditions of note were observed.

6. Planned Activities

- Continue formwork and rebar installation for Building B.
- Continue formwork and rebar installation for Building C.
- Continue formwork and rebar installation for Building H.

Photo Log

Photo 1- View of utility installation in C7-C8.



Photo 2- View of loading out soil for export offsite.



Photo 3- View of utility and formwork installation in A3, A4, B3, and B4.



DAILY ACTIVITY REPORT

146 Bayard Street Site

SITE ADDRESS:	146 Bayard-150 Bayard Street, Brooklyn		
DATE:	November 23, 2020		
BCP NUMBER:	C-224294		
CONTRACTOR	MANPOWER	EQUIPMENT	
Prestige Construction	Joe Plym (Super) Geo Solis (Asst. Super)		

DESCRIPTION OF DAILY ACTIVITY
General housekeeping

CONTRACTOR	MANPOWER	EQUIPMENT
Moncon	R. Molloy Jose Ayala Leonardo Aur Torrance Jordan	Carlos Diaz (1) Pile Driller/Driver, (1) Excavator

DESCRIPTION OF DAILY ACTIVITY
Excavation of soil in grid B3 and placed into a stockpile, Continued to dig out area in grid b3 for lagging. Exported 3 truckloads of soil to Palmerton PA

CONSULTANT	MANPOWER	EQUIPMENT
Environmental Business Consultants	Steven Koumides	(1) PID, (1) Dust Meter

DESCRIPTION OF DAILY ACTIVITY
General air monitoring oversight and documentation of activities performed. Over saw soil exportation by trucks to Palmerton Pa (3 trucks)

WEATHER	WIND & DIRECTION	SE @ 16 MPH	AM	TEMP	52	AM	SKY	rain	AM
		SE @ 16 MPH	PM	TEMP	54	PM	SKY	Partly cloudy	PM

AIR MONITORING

ONSITE CAMP STATIONS	No	UPWIND	No	DOWNWIND	
CORRECTIVE ACTION REQUIRED	No	ODOR	No	ODOR	
	No	PID ACTION LIMIT	No	PID ACTION LIMIT	
	No	PM ACTION LIMIT	No	PM ACTION LIMIT	
MAXIMUM AND MINIMUM PARTICULATE DETECTIONS (mg/m3)	0.001	MAX UP WIND	0.001	MIN UP WIND	
	0.001	MAX DOWN WIND	0.001	MIN DOWN WIND	

Comments/Notes

MATERIALS TRANSPORTED OFFSITE AND DELIVERED TO SITE
3 truckloads of soil (20 cubic yards each) exported to Palmerton Pa facility.

PLAN FOR Next Day 11/24/20
Continued excavation of soil, and continued lagging installation for underpinning in grid B3

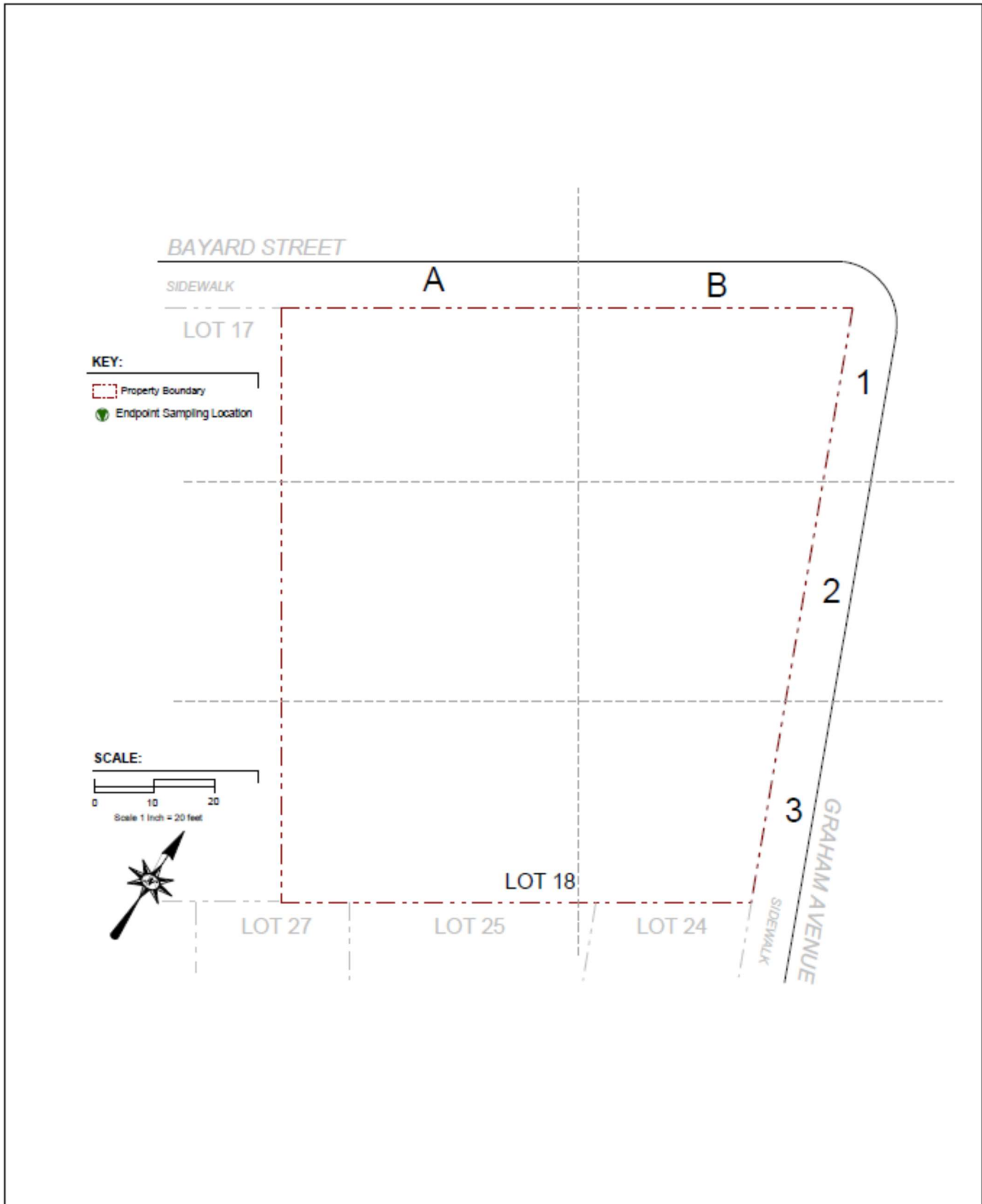


Photo Log

Photo 1 –
A look at the site
at the beginning
of the day, facing
toward Meeker
Avenue



Photo 2 –
View of the
trucking of three
loads of soil to
Palmerton PA
facility.



Photo 3 –
View of
excavator
putting soil into
stockpile



Photo 4 –
A view of the area
in grid B3 as its
getting ready for
lagging and
underpinning.

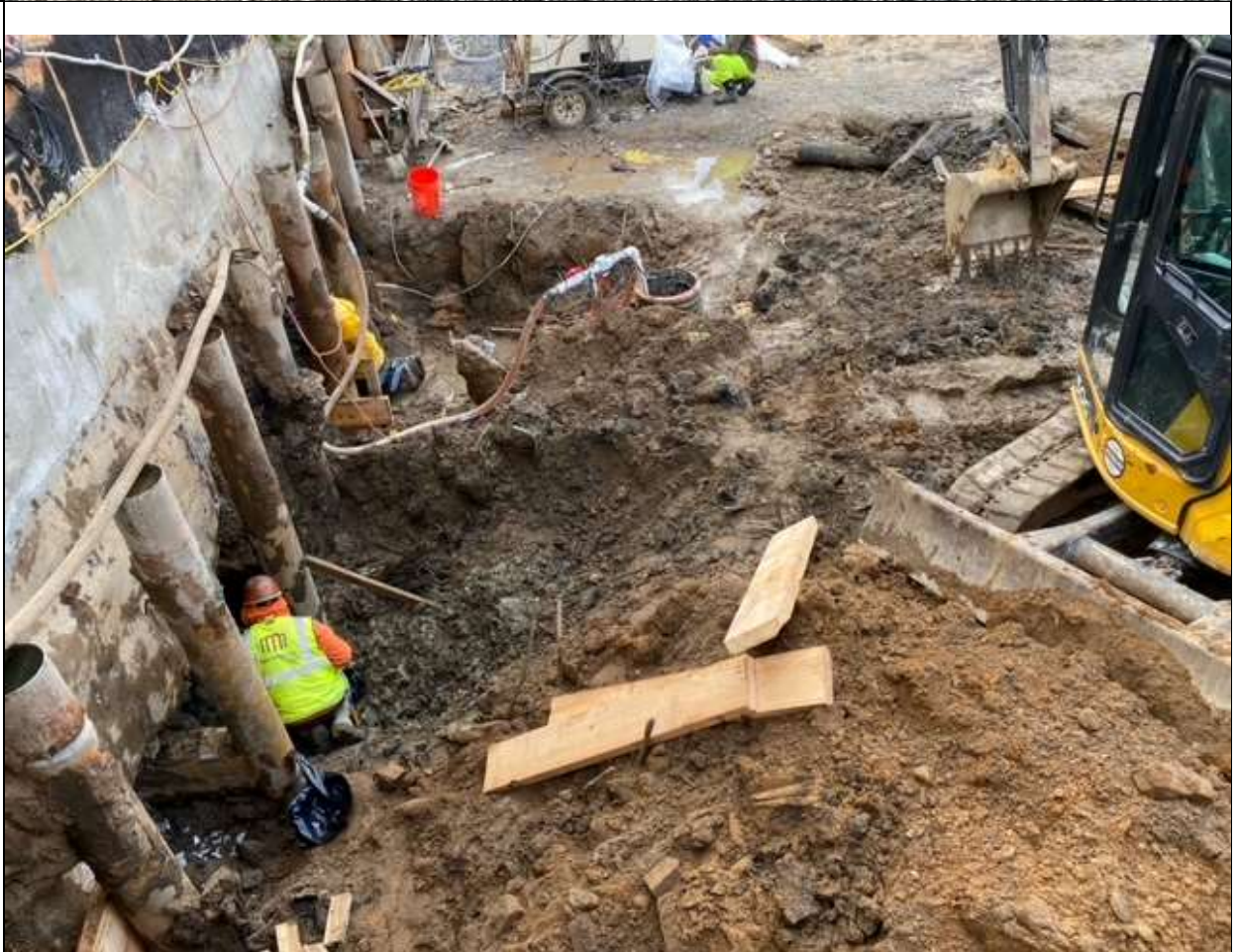


Photo 5- View of site towards the end of the day, facing towards Bayard Street



Daily Air Monitoring Log

Project Name: Redevelopment project Date: 11/23/20

Project Location: 146 Bayard-150 Bayard Street, Brooklyn

Temperature: 52 Wind Speed: 16mph Wind Direction: SW

Background Data: Upwind - PID 0.0 ppm Dust Meter 1 - .001 mg/m³

Downwind - PID 0.0 ppm Dust Meter 2 - .001 mg/m³

Time	Work Zone		Upwind		Downwind	
	PID - ppm	Dust - mg/m ³	PID - ppm	Dust - mg/m ³	PID - ppm	Dust - mg/m ³
7:00	rain	rain	rain	rain	rain	rain
7:15	rain	rain	rain	rain	rain	rain
7:30	rain	rain	rain	rain	rain	rain
7:45	rain	rain	rain	rain	rain	rain
8:00	rain	rain	rain	rain	rain	rain
8:15	rain	rain	rain	rain	rain	rain
8:30	rain	rain	rain	rain	rain	rain
8:45	rain	rain	rain	rain	rain	rain
9:00	rain	rain	rain	rain	rain	rain
9:15	rain	rain	rain	rain	rain	rain
9:30	rain	rain	rain	rain	rain	rain
9:45	rain	rain	rain	rain	rain	rain
10:00	rain	rain	rain	rain	rain	rain
10:15	rain	rain	rain	rain	rain	rain
10:30	rain	rain	rain	rain	rain	rain
10:45	rain	rain	rain	rain	rain	rain
11:00	rain	rain	rain	rain	rain	rain
11:15	rain	rain	rain	rain	rain	rain
11:30	0.0	0.001	0.0	0.001	0.0	0.001
11:45	0.0	0.001	0.0	0.001	0.0	0.001
12:00	0.0	0.001	0.0	0.001	0.0	0.001
12:15	0.0	0.001	0.0	0.001	0.0	0.001
12:30	0.0	0.001	0.0	0.001	0.0	0.001
12:45	0.0	0.001	0.0	0.001	0.0	0.001
13:00	0.0	0.001	0.0	0.001	0.0	0.001
13:15	0.0	0.001	0.0	0.001	0.0	0.001
13:30	0.0	0.001	0.0	0.001	0.0	0.001
13:45	0.0	0.001	0.0	0.001	0.0	0.001
14:00	0.0	0.001	0.0	0.001	0.0	0.001
14:15	0.0	0.001	0.0	0.001	0.0	0.001
14:30	0.0	0.001	0.0	0.001	0.0	0.001
14:45	0.0	0.001	0.0	0.001	0.0	0.001
15:00	0.0	0.001	0.0	0.001	0.0	0.001

Shipment Date	Manifest Number	Transporter Name/Truck Name	License Plate	On-Site Location (approx. depth)	Off-Site Disposal Facility	Material Type (Contaminated soil, native soil, C&D, etc.)	Tonnage
11/23/2020	798798	JGM trucking	AU552N	Grid B3	Palmerton Pa	non hazardous soil	16
11/23/2020	798799	JGM trucking	AS878T	Grid B3	Palmerton Pa	non hazardous soil	16
11/23/2020	798800	W Ojeda & son	AT644K	Grid B4	Palmerton Pa	non hazardous soil	16



Daily Report for November 24, 2020

**Far Rockaway Project
20-02 Mott Avenue
Far Rockaway, NY
BCP #C241224**

1. An update of progress made during the reporting day including references to alpha-numeric map for Site activities.

- Utility, rebar, and formwork installation in A1- A4, B1- B4, C5-C8, D1- D7, E2- E4, and F2-F4.
- Excavated clean fill in B1 and B2.

2. Locations of work and quantities of material imported and exported from the Site.

- 18 loads of nonhazardous soil from grids C7 and C8 (0-7) were exported to the Posillico Facility in Farmingdale, NY.
- No material was imported to the site today.

3. A summary of any and all complaints with relevant details (names, phone numbers).

- No complaints.

4. A summary of CAMP findings (air and dust readings).

- No elevated PID or dust readings were identified.

5. An explanation of notable Site conditions.

- Today's work was overseen by David Klein of CA RICH. No conditions of note were observed.

6. Planned Activities

- Continue formwork and rebar installation for Building B.
- Continue formwork and rebar installation for Building C.
- Continue formwork and rebar installation for Building H.

Photo Log

Photo 1- View of utility installation in B1 and B2.



Photo 2- View of loading trucks with soil for export.



Photo 3- View of utility and formwork installation in A3, A4, B3, and B4.





Daily Report for November 25, 2020

**Far Rockaway Project
20-02 Mott Avenue
Far Rockaway, NY
BCP #C241224**

1. An update of progress made during the reporting day including references to alpha-numeric map for Site activities.

- Utility, rebar, and formwork installation in A1- A4, B1- B4, C5-C8, D1- D7, E2- E4, and F2-F4.
- Backfilled and graded clean fill in B1 and B2.

2. Locations of work and quantities of material imported and exported from the Site.

- 2 loads of nonhazardous soil from grids C7 and C8 (0-7) were exported to the Posillico Facility in Farmingdale, NY.
- No material was imported to the site today.

3. A summary of any and all complaints with relevant details (names, phone numbers).

- No complaints.

4. A summary of CAMP findings (air and dust readings).

- No elevated PID or dust readings were identified.

5. An explanation of notable Site conditions.

- Today's work was overseen by David Klein of CA RICH. No conditions of note were observed.

6. Planned Activities

- Continue formwork and rebar installation for Building B.
- Continue formwork and rebar installation for Building C.
- Continue formwork and rebar installation for Building H.

Photo Log

Photo 1- View of backfilling and grading in B1 and B2.



Photo 2- View of backfilled area in B1.



Photo 3- View of utility and formwork installation in A3, A4, B3, and B4.





Daily Report for November 30, 2020

**Far Rockaway Project
20-02 Mott Avenue
Far Rockaway, NY
BCP #C241224**

1. An update of progress made during the reporting day including references to alpha-numeric map for Site activities.

- Utility, rebar, and formwork installation in A1- A4, B1- B4, C5-C8, D1- D7, E2- E4, and F2-F4.
- Collected Endpoint samples: EP-89 (7), EP-90 (7), and FB113020.

2. Locations of work and quantities of material imported and exported from the Site.

- No material was exported from the site today.
- 10 loads (~250 tons) of approved clean fill were imported to the site today from the P Park facility in Prospect Park, NJ.

3. A summary of any and all complaints with relevant details (names, phone numbers).

- No complaints.

4. A summary of CAMP findings (air and dust readings).

- No elevated PID or dust readings were identified.

5. An explanation of notable Site conditions.

- Today's work was overseen by David Klein of CA RICH. No conditions of note were observed.

6. Planned Activities

- Continue formwork and rebar installation for Building B.
- Continue formwork and rebar installation for Building C.
- Continue formwork and rebar installation for Building H.

Photo Log

Photo 1- View of utility and formwork installation in C6-C8.



Photo 2- View of utility and formwork installation in D4, D5, E4, and E5.



Photo 3- View of utility and formwork installation in A3, A4, B3, and B4.

